

O.D.O.T. DISTRICT 2 SURVEY OFFICE

PERSONNEL _____

REFERENCE NO. 7A

SHEET 11 OF 26

NOTES HOMAN

DATE 8-12-09

ROUTE US 6

H.C. HOMAN

WEATHER CLOUDY

COUNTY SANDUSKY

R.C. ROUSOS

TEMP. 75°

TOWNSHIP MADISON

SECTION 34

T 5 N R 13 E

TYPE MONUMENT R.R. SPIKE

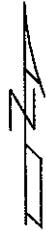
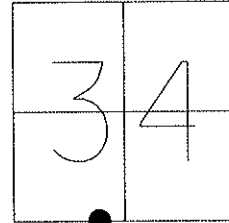
ON SURFACE - ~~BELOW~~ ON

~~LEFT~~ - Q PAV'T - ~~RIGHT~~ ON

12.3 TOLT. EDGE PAVEMENT

S.L.M. 180 + 40

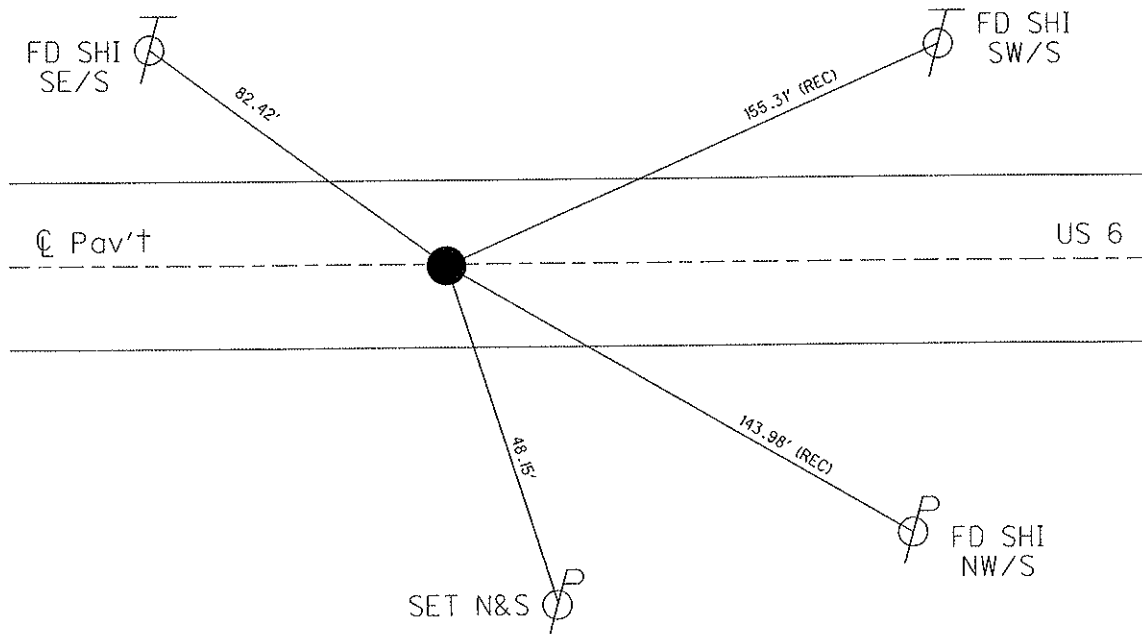
GPS Northing: 611212.634 Easting: 1734619.145



RECORD: STA. 180+00

RESET SM. R.R. SPIKE
5-06-93 M.B.

SET MAG & WASHER
NEWREFA7, 11/03/09 D.H.



O.D.O.T. DISTRICT 2 SURVEY OFFICE

PERSONNEL

REFERENCE NO. 7A

SHEET OF

NOTES BARNHISEL

H.C. VAN DUSEN

DATE 4-9-93

ROUTE 456

R.C. CORDES

WEATHER RAIN

COUNTY SANDUSKY

GREEN

TEMP. +58°

TOWNSHIP MADISON

SECTION 34

T 5 N R 13 E

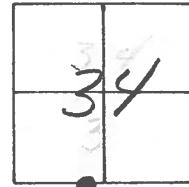
TYPE MONUMENT PK & WASHER

ON SURFACE - ~~BELOW~~ yes

~~LEFT~~ - E PAV'T. - ~~RIGHT~~ yes

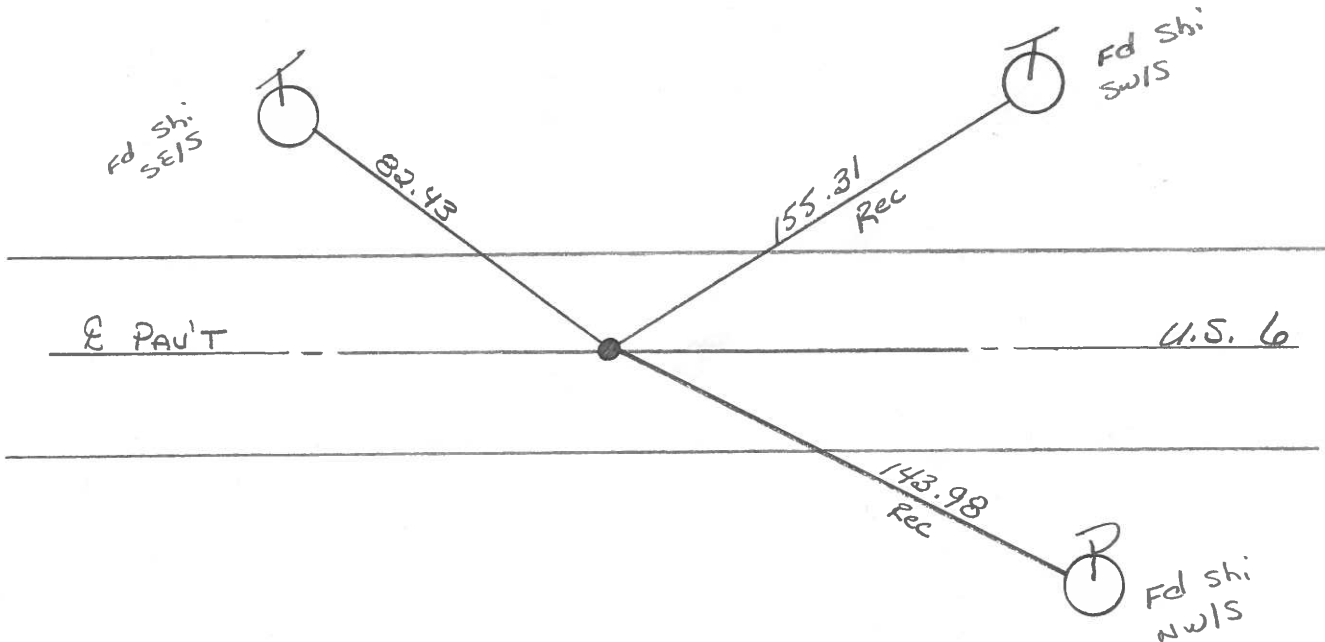
12.3 TO LT EDGE PAVEMENT

S.L.M. 180+40



RECORD: 180+00

Reset Sm. RR Spk.
5-6-93
m.B.



County SANDUSKY S.R. U.S. 6

Date 8-30-83

Township MADISON

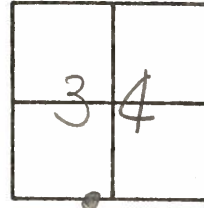
Weather CLEAR

Section 34

Temp. +85°

T5N, R13E

Personnel HOFFMAN



LOEHRKE

BARNHISEL

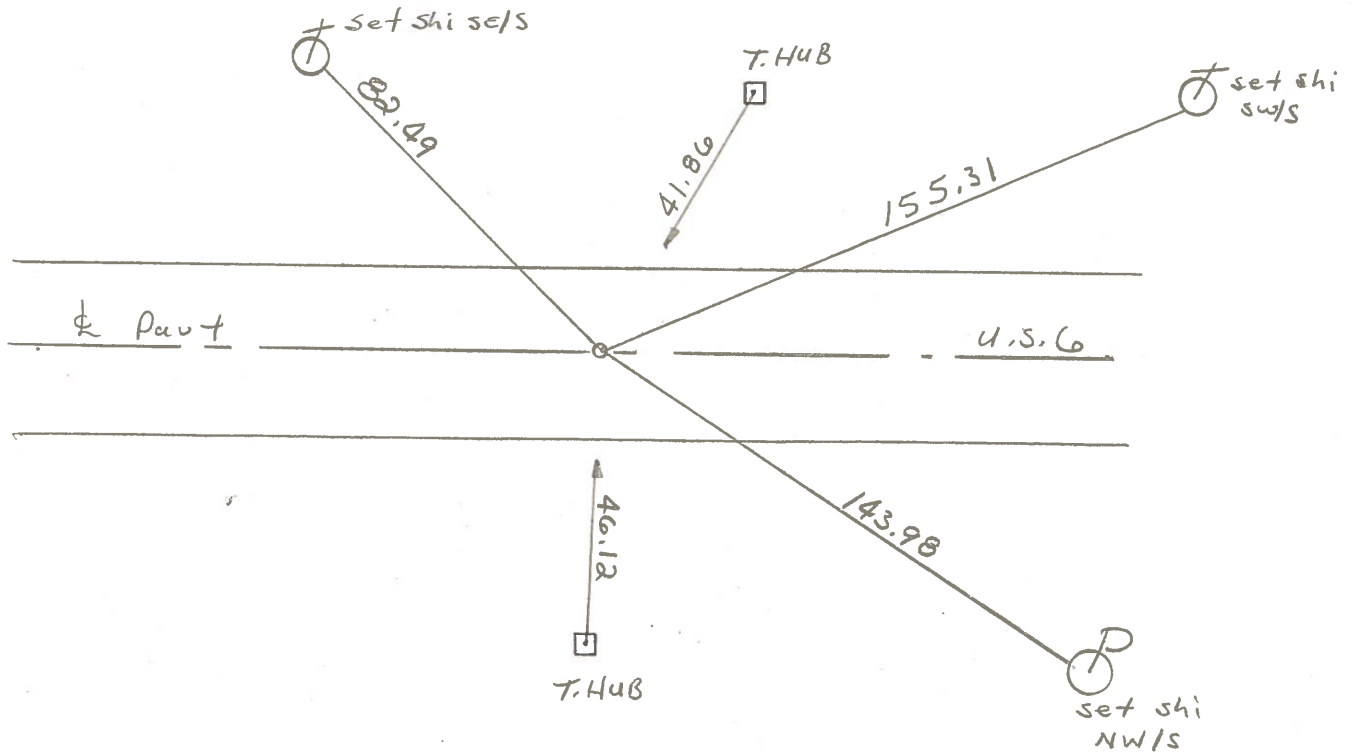
#7-A

Fd small bolt spc @ surface
on & post

S.L.M. = 180+45

SET P.K/WASHER
9/21/83
S.W.H.

Record: 180+00



PERSONNEL TITLE PERSONNEL TITLE
Schneider Potts
Mosser
Barbour
Redding
 DESCRIPTION Ties for Control Points

COUNTY Sandusky DATE Dec-1967
 S. R. U.S. #6 WEATHER
 SEC. Fremont-East TEMP.
 JOB NO.

