

O.D.O.T. DISTRICT 2 SURVEY OFFICE (USE ONLY)

PERSONNEL _____ REFERENCE NO. 8 SHEET 12 OF 27

NOTES HOMAN DATE 8/12/09 ROUTE US 6

H.C. HOMAN WEATHER CLOUDY COUNTY SANDUSKY

R.C. ROUSOS TEMP. 75° TOWNSHIP MADISON

SECTION 34

T 5 N R 13 E

TYPE MONUMENT R.R.SPIKE

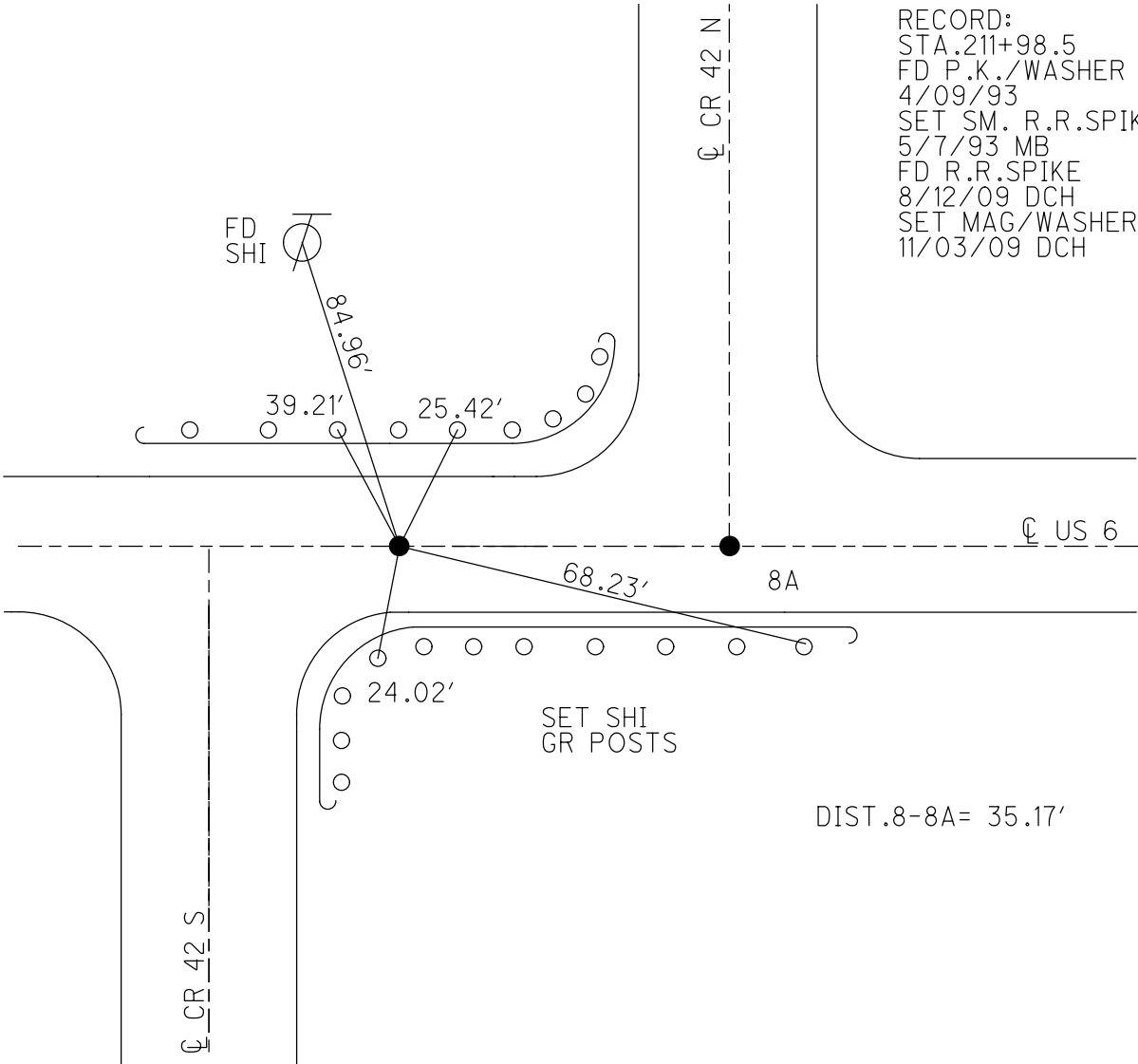
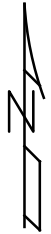
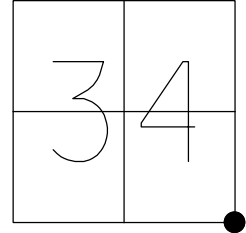
ON SURFACE - ~~BELOW~~ ON

LEFT - CL PAV'T - RIGHT ON

12.8' TO LT EDGE PAVEMENT

S.L.M. 212+49

GPS NORTHING: 611137.165 EASTING: 1737816.929



RECORD:
 STA. 211+98.5
 FD P.K./WASHER
 4/09/93
 SET SM. R.R.SPIKE
 5/7/93 MB
 FD R.R.SPIKE
 8/12/09 DCH
 SET MAG/WASHER
 11/03/09 DCH

O.D.O.T. DISTRICT 2 SURVEY OFFICE

PERSONNEL

REFERENCE NO. 8

SHEET OF

NOTES BARNHISEL

H.C. VAN DUSEN

DATE 4-9-93

ROUTE US 6

R.C. CORDS

WEATHER RAIN

COUNTY SANDUSKY

GREEN

TEMP. +58°

TOWNSHIP MADISON

SECTION 34

T. 5 N. R. 13 E

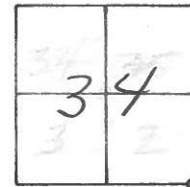
TYPE MONUMENT PK & WASHER

ON SURFACE - ~~BELOW~~ yes

~~LEFT~~ - PAV'T. - ~~RIGHT~~ yes

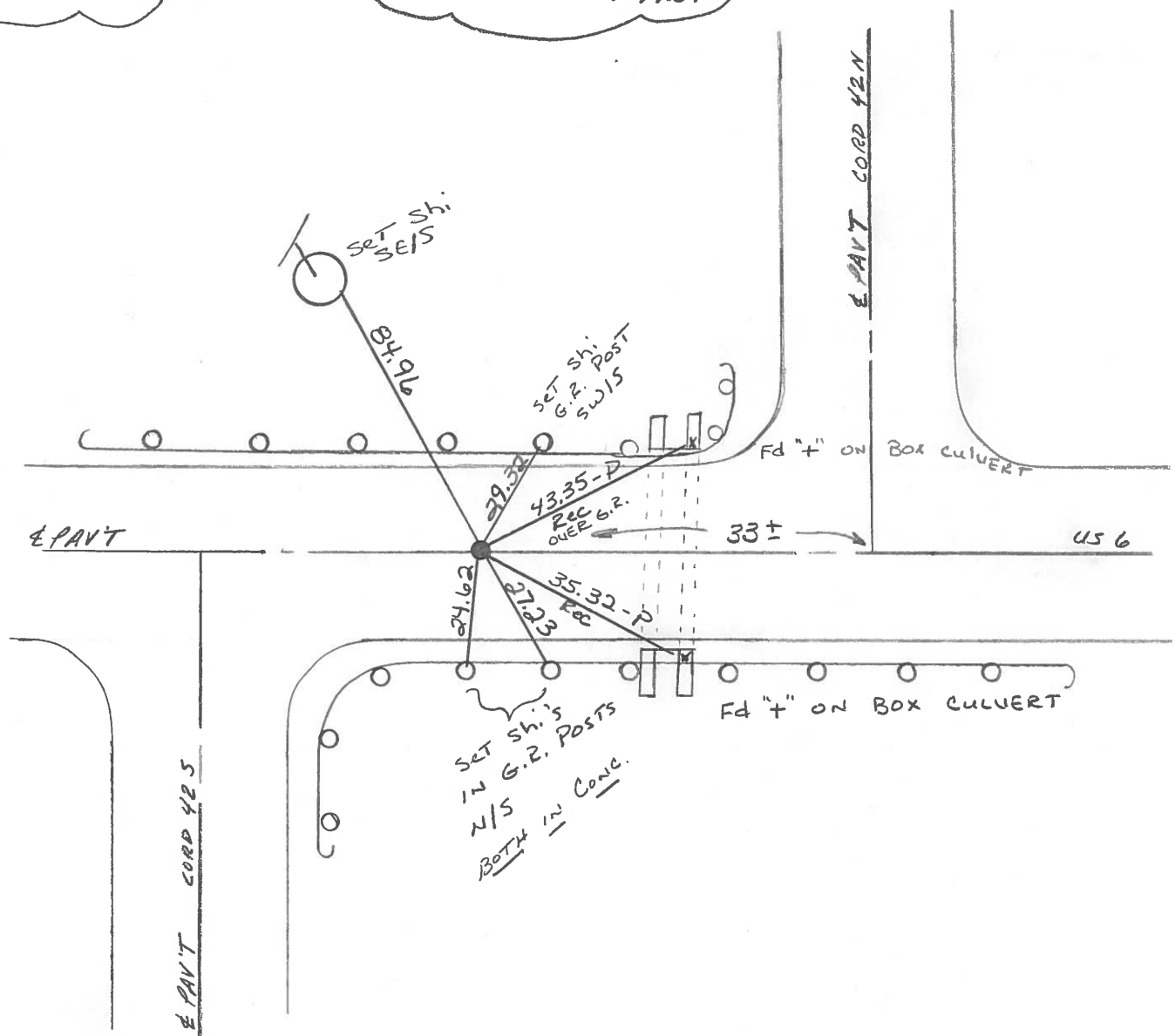
12.8 TO LT EDGE PAVEMENT

S.L.M. 212 + 49



RECORD
211 + 98.5

Reset 5-7-93
Sm. RR Spk M.B.



County SANDUSKY S.R. U.S. 6

Date 8-30-83

Township MADISON

Weather CLEAR

Section 34

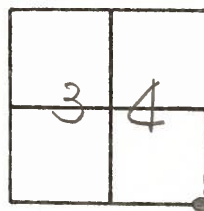
Temp. + 85°

TSN, R13E

Personnel HOFFMAN

LOEHRKE

BARALHISEL



8

Fd SMALL bolt spk @ surface on $\frac{1}{2}$ part U.S. 6

S.M. = 212 + 53

\pm 33' EAST of $\frac{1}{2}$ part Co. Rd. 42-SOUTH

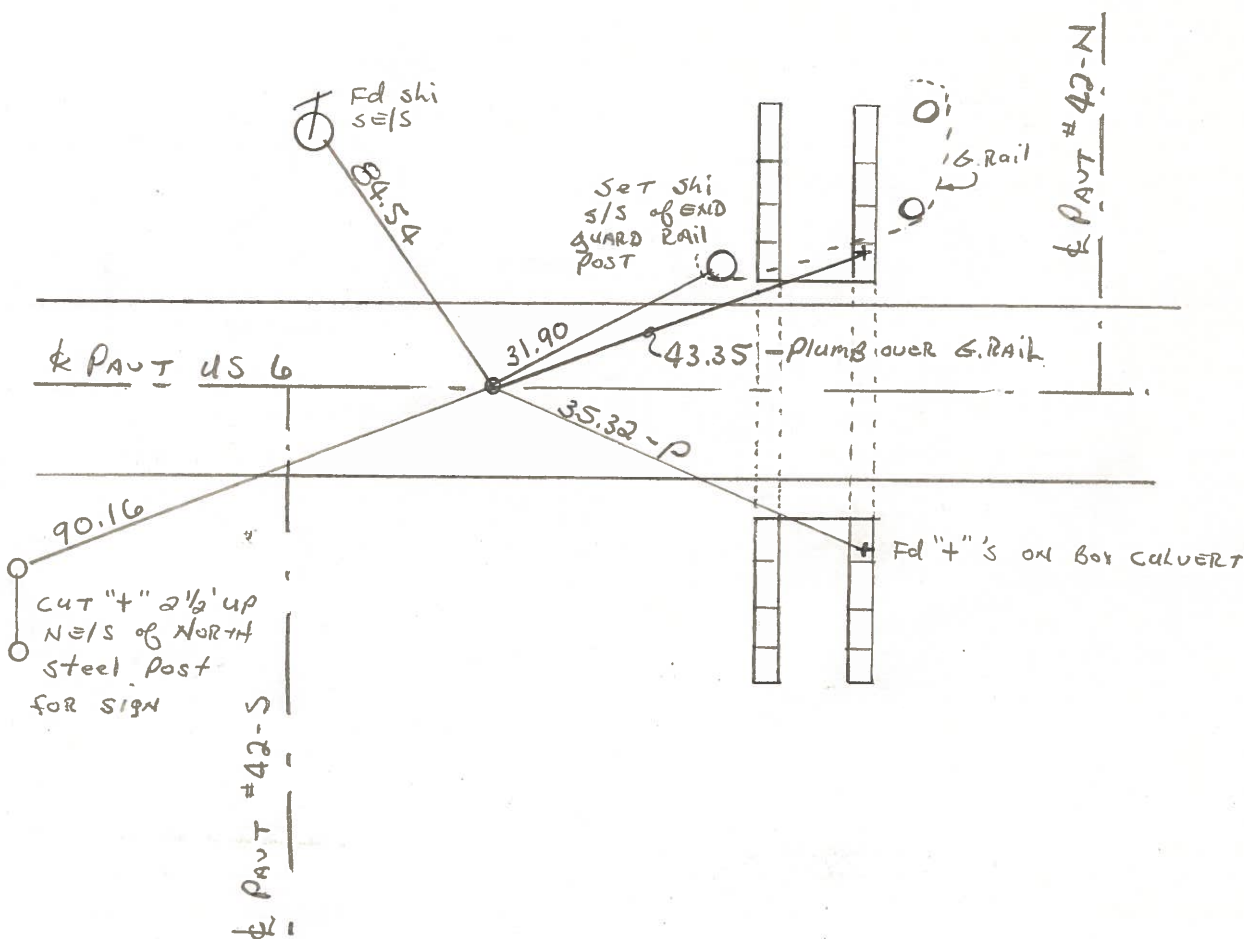
SET P.K./WASHER

9/21/83

S.W.H.

Record:

211 + 98.5



PERSONNEL	TITLE	PERSONNEL	TITLE	COUNTY	DATE	S. R.	WEATHER	SEC.	TEMP.
<u>Schneider</u>		<u>Patt's</u>		<u>Sandusky</u>	<u>Dec-1967</u>	<u>U.S. #6</u>		<u>Fremont-East</u>	
<u>Masser</u>									
<u>Barbour</u>									
<u>Redding</u>									

DESCRIPTION Ties for Control Points JOB NO. _____

