

O.D.O.T. DISTRICT 2 SURVEY OFFICE

PERSONNEL

REFERENCE NO. 8B

SHEET 14 OF 26

NOTES HOMAN

DATE 8/12/09

ROUTE US 6

H.C. HOMAN

WEATHER CLOUDY

COUNTY SANDUSKY

R.C. ROUSOS

TEMP. 75°

TOWNSHIP MADISON

SECTION 35

T 5 N R 14 E

TYPE MONUMENT R.R.SPIKE

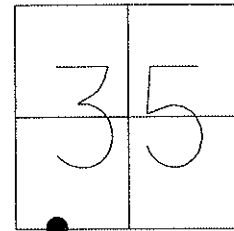
ON SURFACE - ~~BELOW~~ ON

~~LEFT~~ - Q PAV'T - ~~RIGHT~~ ON

12.0' TO RT EDGE PAVEMENT

S.L.M. 225+55 (RECORD 225+00)

GPS Northing: 611115.846 Easting: 1739116.695

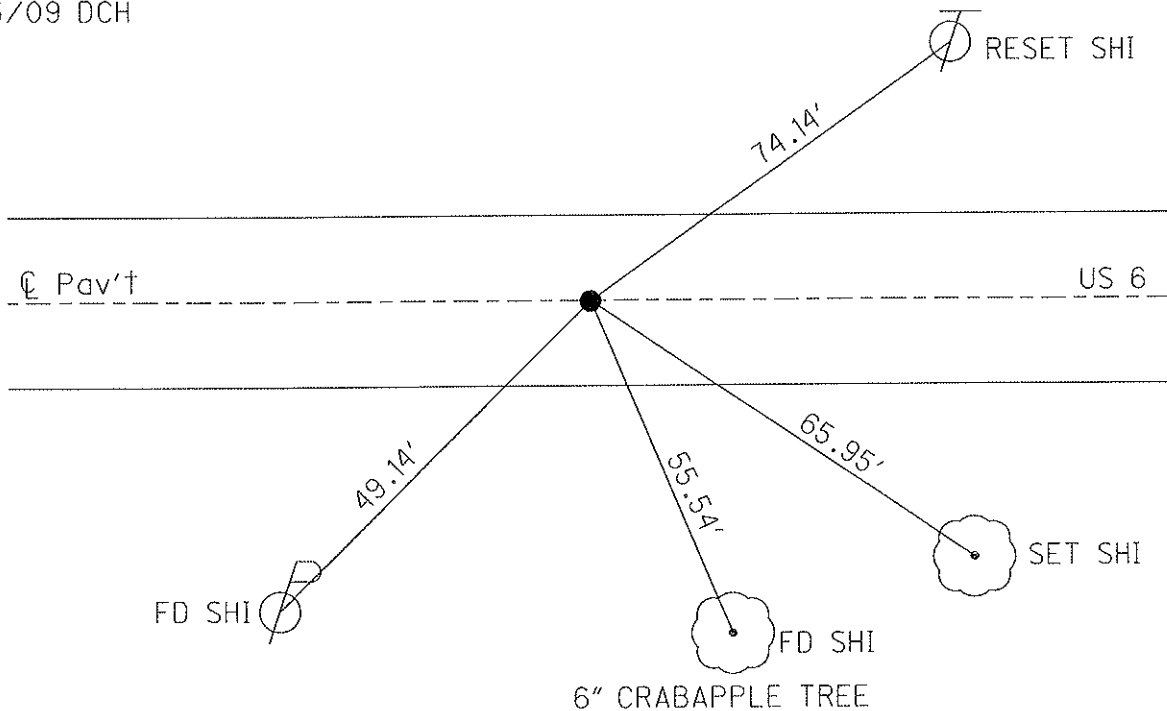


FD P.K. & WASHER
4/09/93

RESET SM. R.R.SPIKE
5/7/93 M.B.

FD R.R.SPIKE
8/12/09 DCH

RESET MAG & WASHER
11/03/09 DCH



O.D.O.T. DISTRICT 2 SURVEY OFFICE

PERSONNEL

REFERENCE NO. 8A

SHEET ___ OF ___

NOTES BARNHISEL

H.C. VAN DUSEN

DATE 4-9-93

ROUTE US 6

R.C. CORDS

WEATHER cloudy

COUNTY SANDUSKY

GREEN

TEMP. +58°

TOWNSHIP MADISON

SECTION 35

T 5 N R 14 E

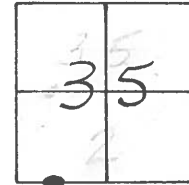
TYPE MONUMENT PK + WASHER

ON SURFACE - ~~BELOW~~ yes

~~LEFT~~ - Q PAV'T. - ~~RIGHT~~ yes

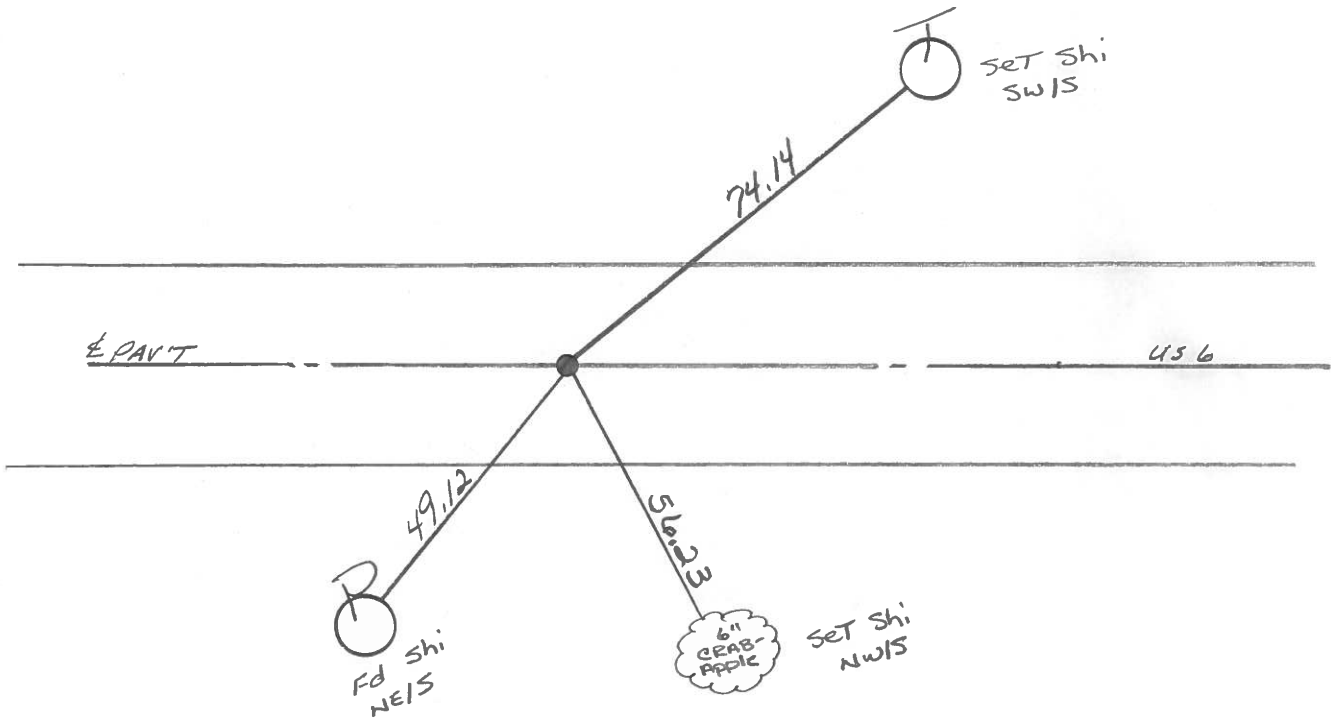
12.0 TO RT EDGE PAVEMENT

S.L.M. 225+55



RECORD: P.I.
225+00

Reset Sm. RR Spt.
5-7-93
M.B.



County SANDUSKY S.R. U.S. 6

Date 8-30-83

Township MADISON

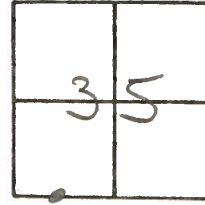
Weather CLEAR

Section 35

Temp. +85°

T5N, R13E

Personnel HOFFMAN



LOHRKE

BARNHISEL

#8-A

Fd SMALL bolt SPK @ SURFACE ON & PAUT

SLM = 225 + 56

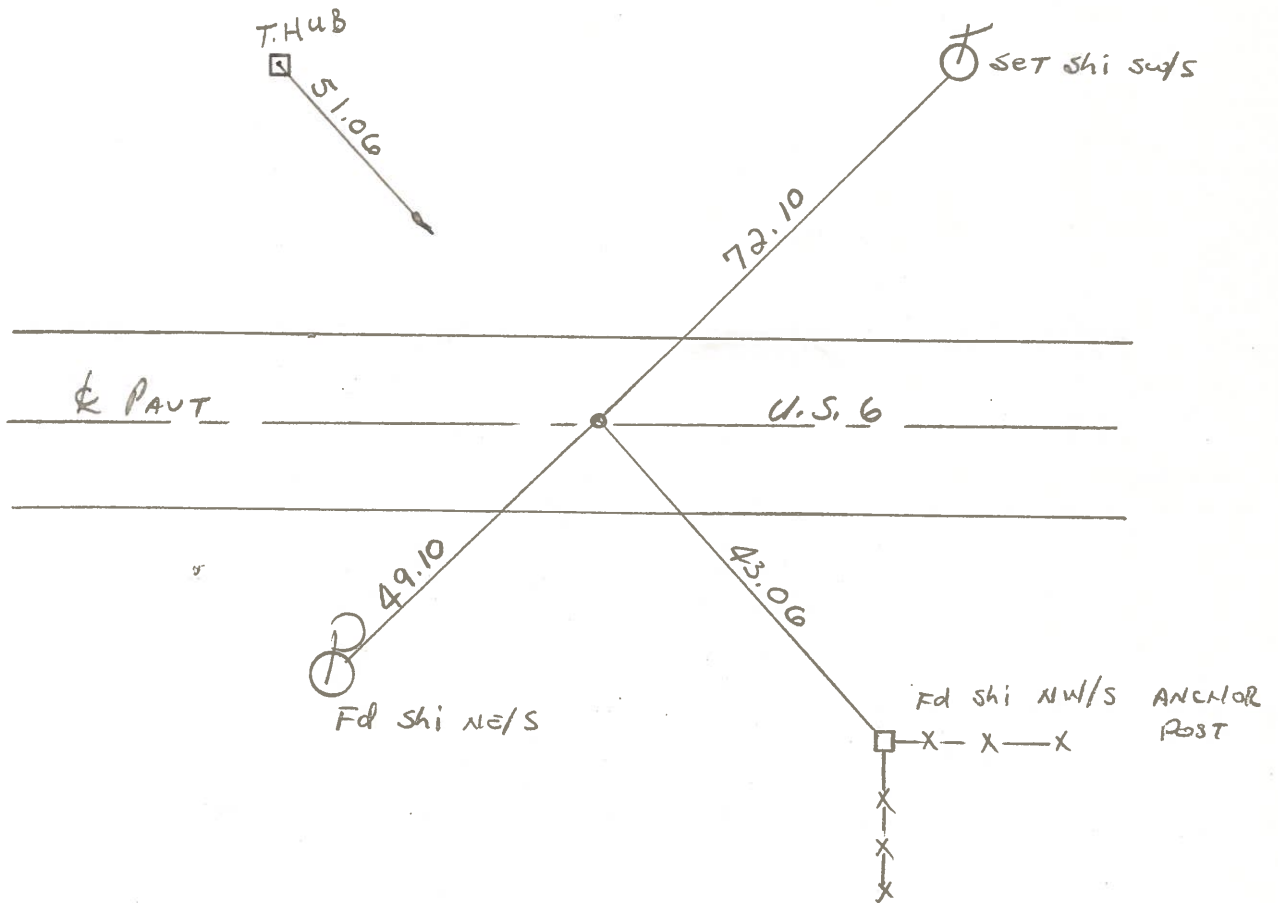
RECORD: P.I.

SET P.I.K./WASHER

225 + 00

9/21/83

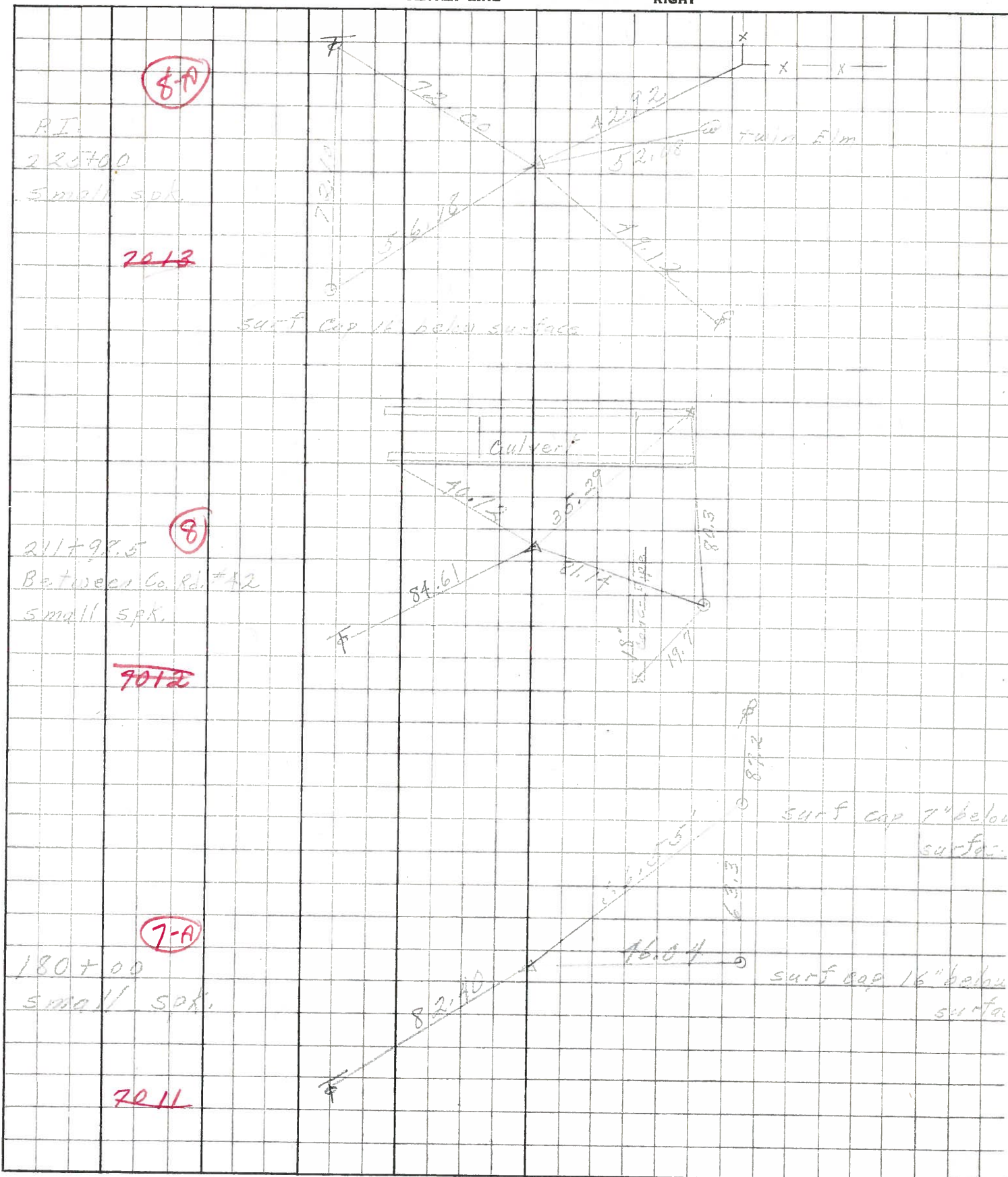
SW.H.



PERSONNEL	TITLE	PERSONNEL	TITLE	COUNTY	DATE	WEATHER	TEMP.
<u>sabnoider</u>		<u>Patts</u>		<u>Sandusky</u>	<u>Dec-1967</u>		
<u>Masser</u>				S. R. <u>U.S. #6</u>			
<u>Barbour</u>				SEC. <u>Fremont-East</u>			
<u>Redding</u>							

DESCRIPTION Ties for Control Points

JOB NO.



7013

7012

7011

P.I.
225700
small spk.

211+98.5
Between Co. Rd. #42
small spk.

180+00
small spk.