

O.D.O.T. DISTRICT 2 SURVEY OFFICE

PERSONNEL _____

REFERENCE NO. 9A

SHEET 16 OF 26

NOTES HOMAN

DATE 8/12/09

ROUTE US 6

H.C. HOMAN

WEATHER CLOUDY

COUNTY SANDUSKY

R.C. ROUSOS

TEMP. 75°

TOWNSHIP MADISON

SECTION 35

T 5 N R 13 E

TYPE MONUMENT RR SPIKE

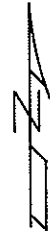
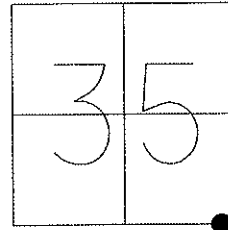
ON SURFACE - ~~BELOW~~ ON

~~LEFT~~ - Q PAV'T - ~~RIGHT~~ ON

12.9 TO LT EDGE PAVEMENT

S.L.M. PT. A= 239+12

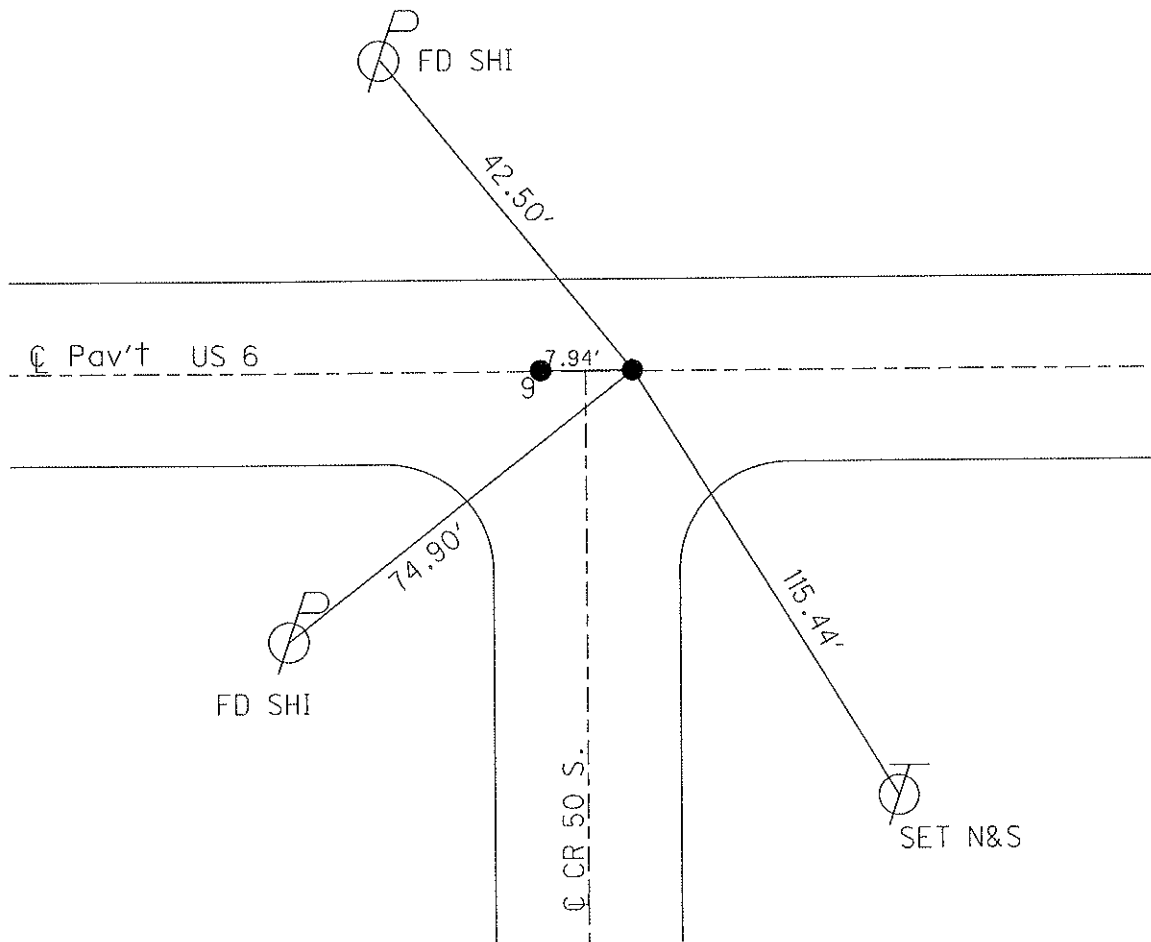
GPS Northing: 611102.058 Easting: 1740476.820



FD P.K. & WASHER
4/09/93
RESET SM. R.R. SPIKE
5/7/93 M.B.
FD R.R. SPIKES
8/12/09 DCH
RESET MAG & WASHER 11/03/09 DCH

RECORD:
SMALL SPKS
238+53.07
CO.RD.50 SOUTH

NOTE: 4/9/93
PT. IS 6.2 EAST OF Q SOUTH



O.D.O.T. DISTRICT 2 SURVEY OFFICE

PERSONNEL

REFERENCE NO. 9

SHEET OF

NOTES BARNHISEL

H.C. VAN DUSEN

DATE 4-9-93

ROUTE 456

R.C. CORDS

WEATHER cloudy

COUNTY SANDUSKY

GREEN

TEMP. +58°

TOWNSHIP MADISON

SECTION 35

T. 5 N R. 13 E

(PT "A") (PT "B")

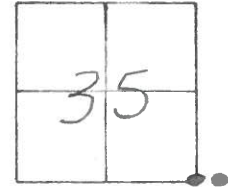
TYPE MONUMENT PK's + WASHERS

ON SURFACE - ~~BELOW~~ yes yes

~~LEFT - & PAV'T.~~ RIGHT yes yes

12.9 TO LT EDGE PAVEMENT BOTH

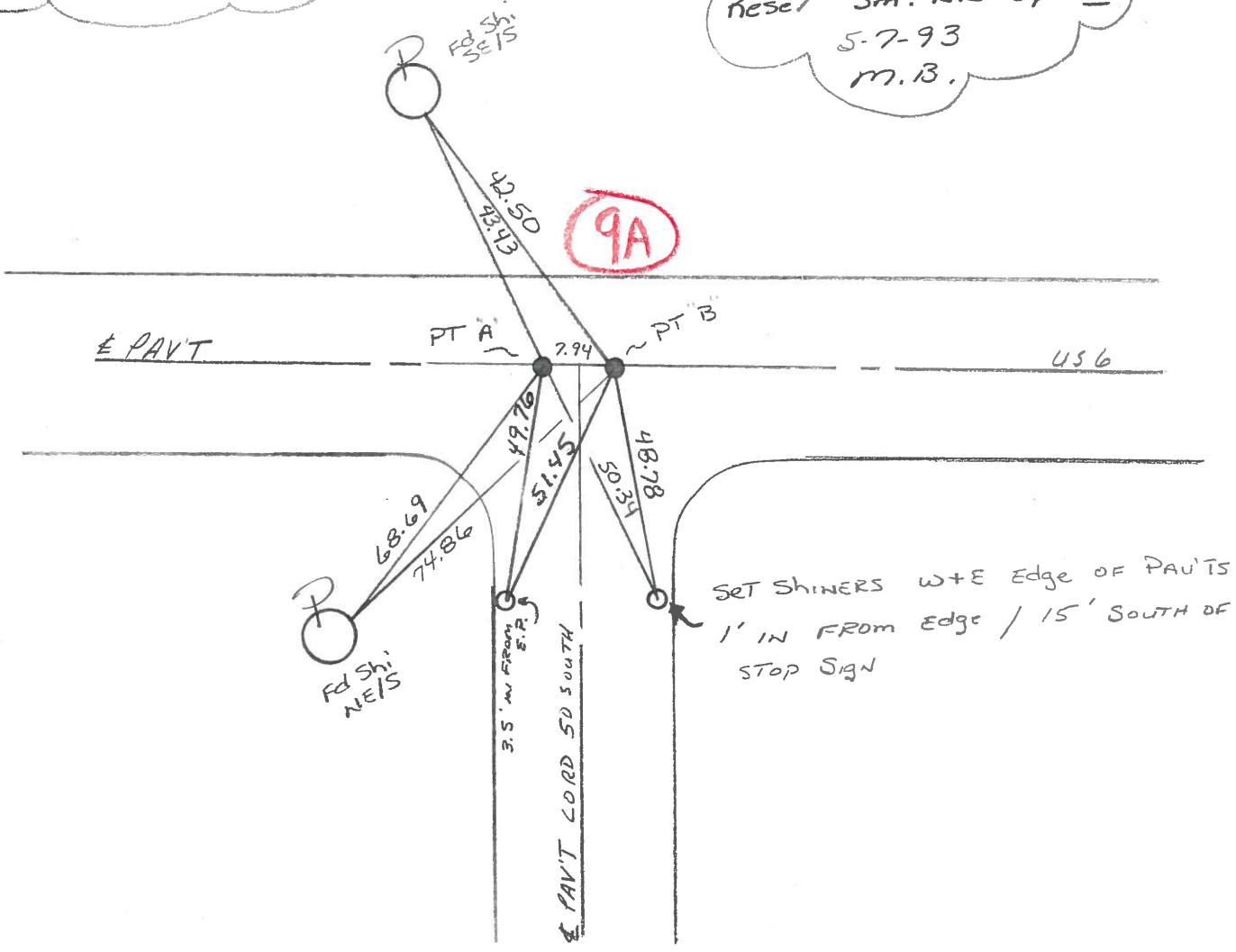
S.L.M. PT. "A" = 239+12



Record:
Small Spks
238+53.07
Co. Rd. 50 South

PT "A" 1.6 WEST OF & SOUTH
PT "B" 6.2 EAST OF & SOUTH

Reset Sm. RR Spk's
5-7-93
M.B.



County SANDUSKY S.R. U.S. 6

Date 8-30-83

Township MADISON

Weather CLEAR

Section 35

Temp. +85°

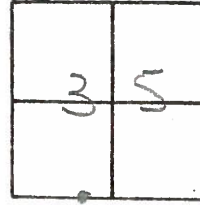
T5N, R13E

Personnel HOFFMAN

LOEHKE

BARNHISEL

9



"A" = Fd SMALL Bolt SPK @ surface on E part U.S. 6

S.I.M. 239+12

"B" = Fd SMALL Bolt SPK @ surface on E part U.S. 6

S.I.M. = 239+20

SET P.K./WASHER

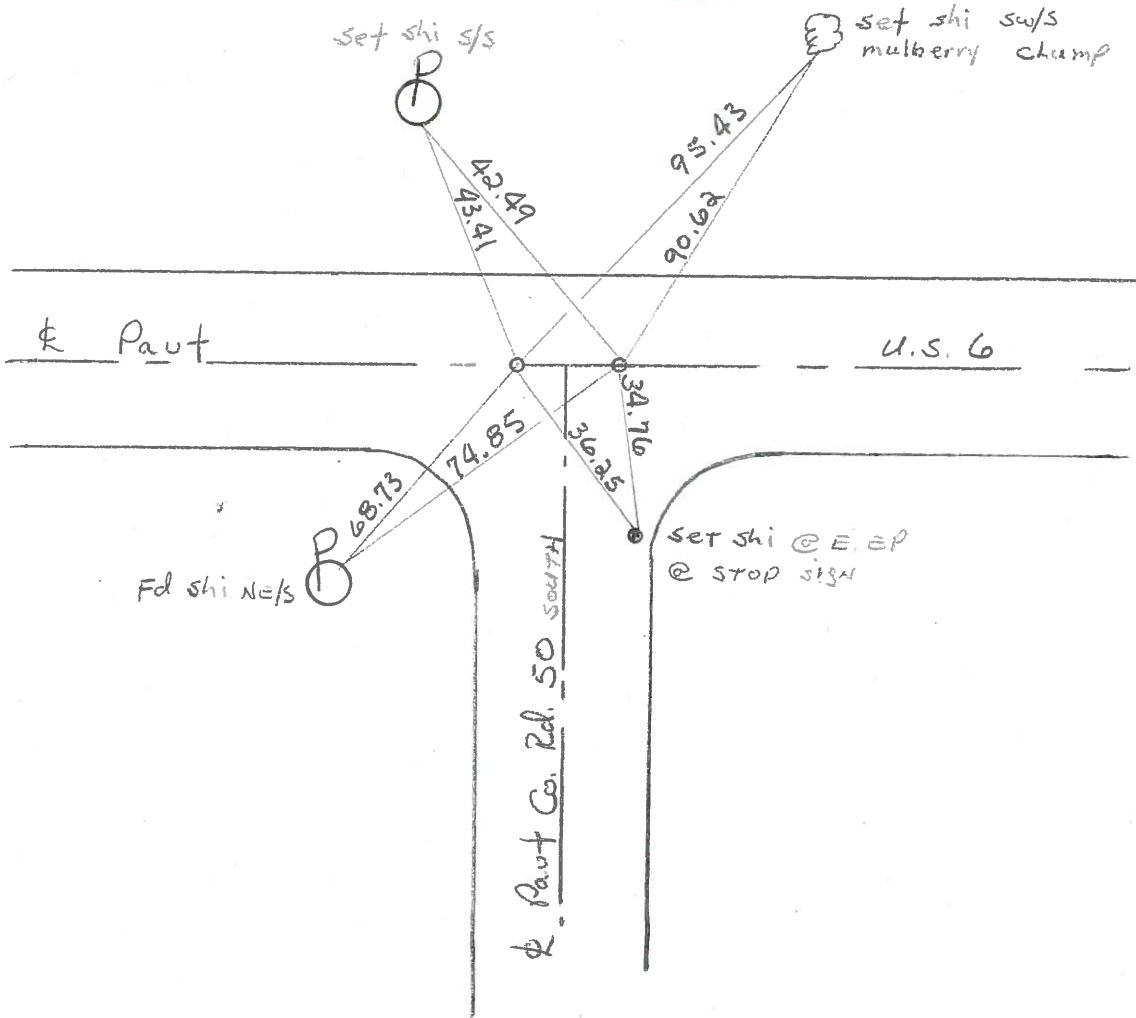
@ BOTH POINTS

9/21/83

S.W.H.

Record: SMALL SPKS
238+53.07
Co. Rd 50 South

9A



PERSONNEL	TITLE	PERSONNEL	TITLE	COUNTY	DATE
<u>Schneider</u>		<u>Potts</u>		<u>Sandusky</u>	<u>Dec-1967</u>
<u>Mosser</u>				S. R. <u>U.S. # 6</u>	WEATHER
<u>Barbour</u>				SEC. <u>Fremont-East</u>	TEMP.
<u>Redding</u>					
DESCRIPTION	<u>Ties for Control Points</u>				JOB NO.
	LEFT	CENTER LINE	RIGHT		

did not find

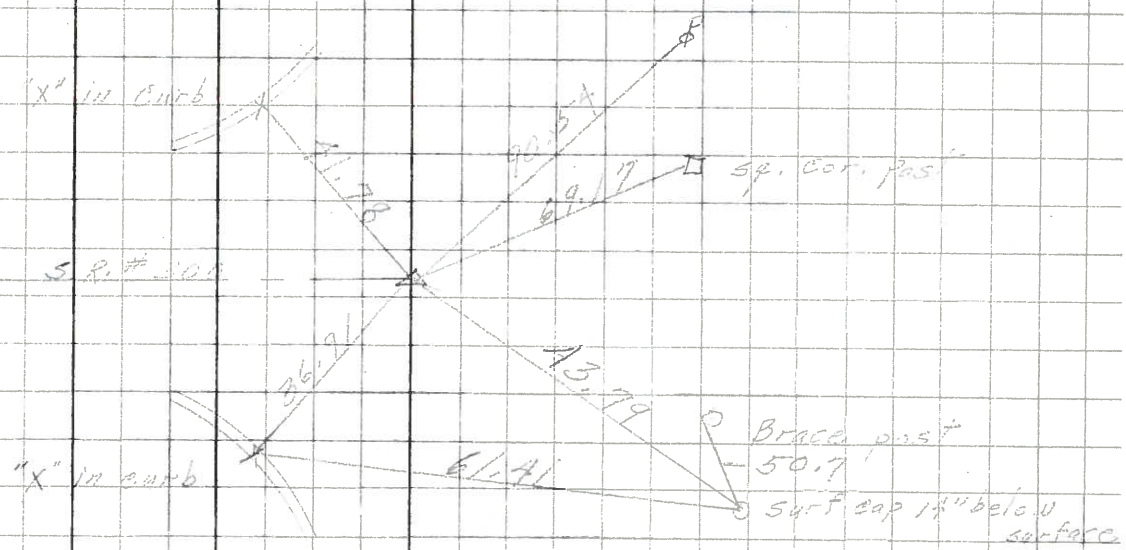
7017



265+00
1500 Bolt

10

7018



238+53.07
Co. Rd. #50 south
small spks

9

7015

7014

