

# O.D.O.T. DISTRICT 2 SURVEY OFFICE

PERSONNEL \_\_\_\_\_

REFERENCE NO. 10

SHEET 17 OF 26

NOTES HOMAN

DATE 8/12/09

ROUTE US 6

H.C. HOMAN

WEATHER CLOUDY

COUNTY SANDUSKY

R.C. ROUSOS

TEMP. 75°

TOWNSHIP MADISON

SECTION 35

T 5 N R 13 E

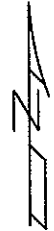
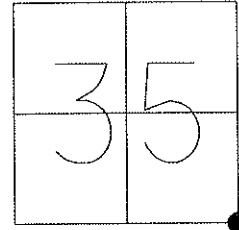
TYPE MONUMENT P.K. SHANK

ON SURFACE - ~~BELOW~~ ON \_\_\_\_\_

~~LEFT~~ - Q PAV'T - ~~RIGHT~~ ON & 1.0 E. OF Q SR 300  
12.5 TO RT. EDGE PAVEMENT

S.L.M. 265+66

GPS Northing: 611089.369 Easting: 1743115.029



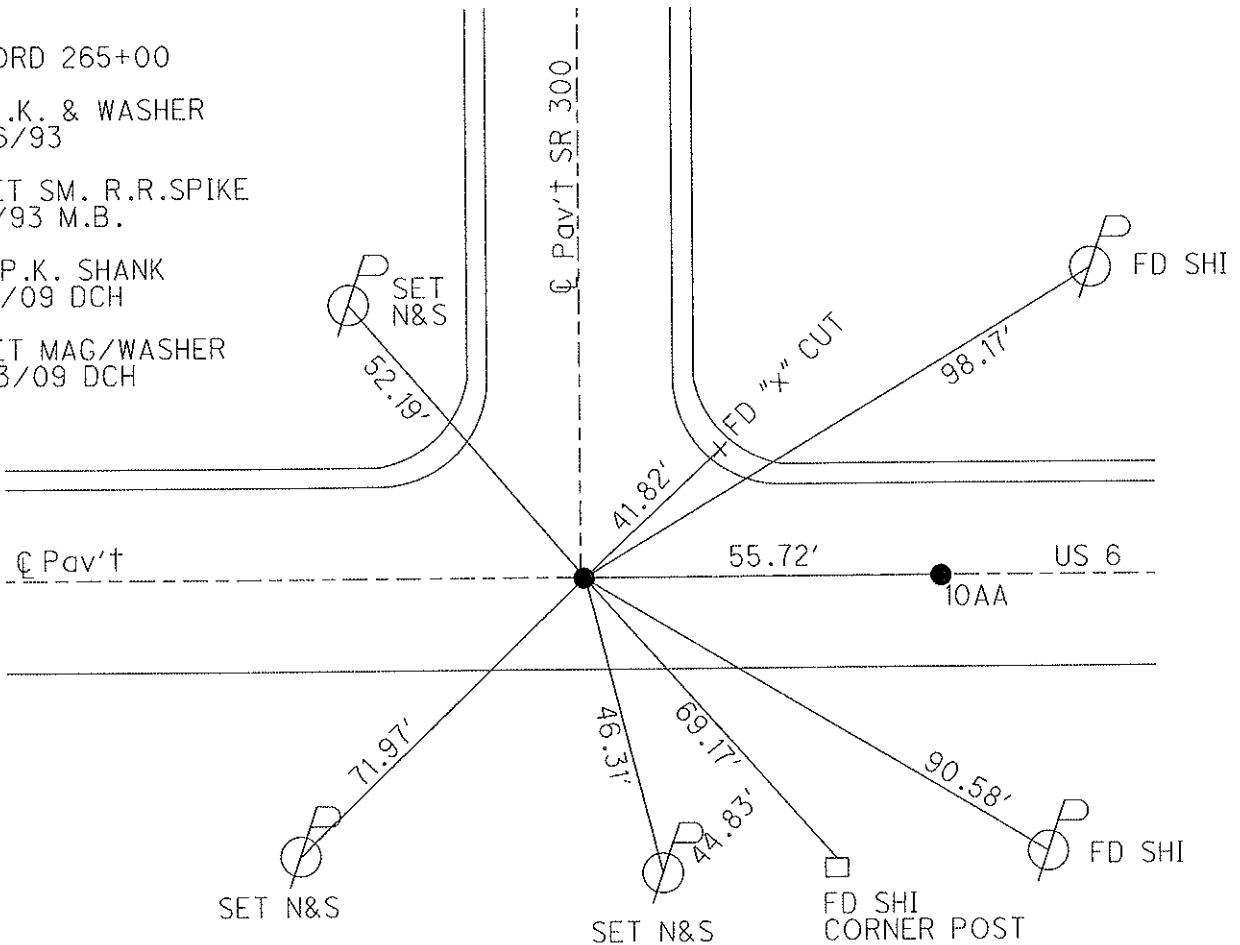
RECORD 265+00

FD P.K. & WASHER  
4/06/93

RESET SM. R.R. SPIKE  
5/7/93 M.B.

FD P.K. SHANK  
8/12/09 DCH

RESET MAG/WASHER  
11/03/09 DCH





Q.D.O.T. DISTRICT 2 SURVEY OFFICE

SHEET \_\_\_\_\_ OF \_\_\_\_\_

County SANDUSKY S.R. U.S. 6

Date 8-30-83

Township MADISON

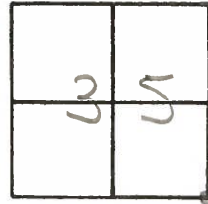
Weather CLEAR

Section 35

Temp. +85°

TSN, R1E

Personnel Hoffman



Loehrer

#10

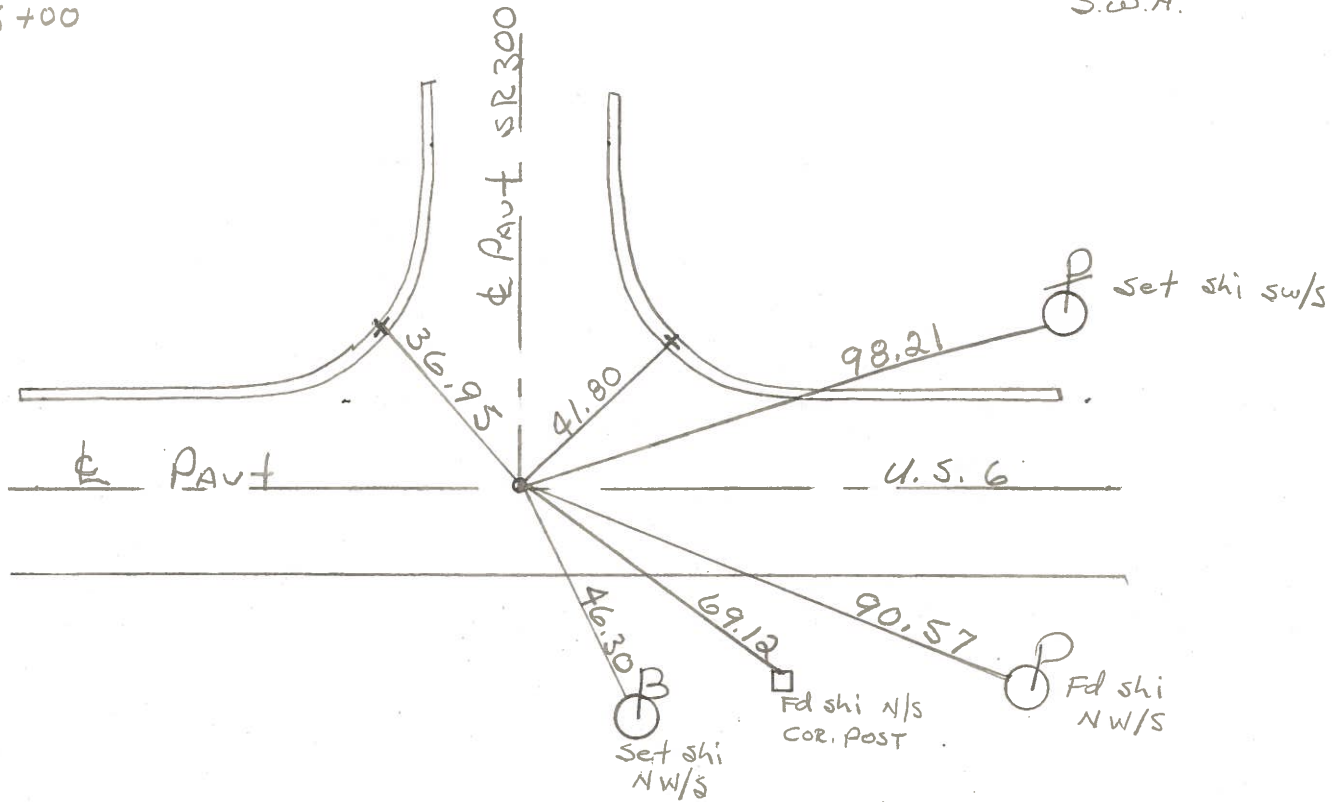
Barnhisel

Fd small bolt spr @ surface  
on & both pavts

S.I.M. = 265 + 65

SET P.K./WASHER  
9/21/83  
S.W.H.

Record:  
265+00



PERSONNEL	TITLE	PERSONNEL	TITLE	COUNTY	DATE	WEATHER	TEMP.
<u>Schneider</u>		<u>Potts</u>		<u>Sandusky</u>	<u>Dec-1967</u>		
<u>Mosser</u>				<u>S. R. U.S. # 6</u>			
<u>Barbour</u>				<u>SEC. Fremont-East</u>			
<u>Redding</u>							

DESCRIPTION Ties for Control Points JOB NO. \_\_\_\_\_

