

O.D.O.T. DISTRICT 2 SURVEY OFFICE

PERSONNEL

REFERENCE NO. 10A

SHEET 19 OF 26

NOTES HOMAN

DATE 8/12/09

ROUTE US 6

H.C. HOMAN

WEATHER CLOUDY

COUNTY SANDUSKY

R.C. ROUSOS

TEMP. 75°

TOWNSHIP MADISON

SECTION 36

T 5 N R 13 E

TYPE MONUMENT RR SPIKE

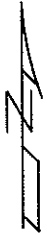
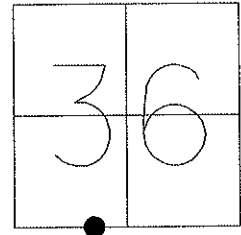
ON SURFACE - ~~BELOW~~ ON

~~LEFT~~ - Q PAV'T - ~~RIGHT~~ ON

13.2' TO RT EDGE PAVEMENT

S.L.M. 282+10

GPS Northing: 611101.456 Easting: 1744757.048



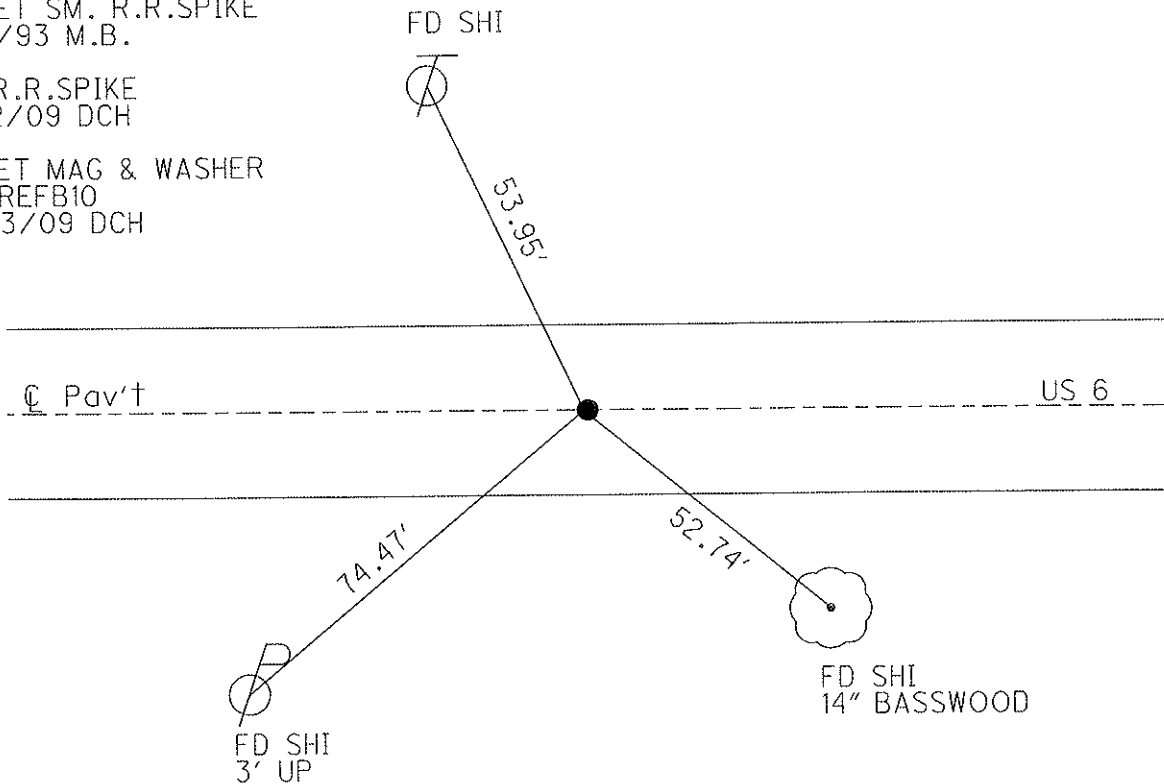
RECORD 281+43.08

FD P.K. & WASHER  
4/06/93

RESET SM. R.R.SPIKE  
5/7/93 M.B.

FD R.R.SPIKE  
8/12/09 DCH

RESET MAG & WASHER  
NEWREFB10  
11/03/09 DCH



# O.D.O.T. DISTRICT 2 SURVEY OFFICE

PERSONNEL

REFERENCE NO. 10-A

SHEET      OF     

NOTES BARNHISEL

H.C. VAN DUSEN

DATE 4-6-93

ROUTE US 6

R.C. CORDES

WEATHER SUNNY

COUNTY SANDUSKY

GREEN

TEMP. +40°

TOWNSHIP MADISON

SECTION 36

T 5 N R 13 E

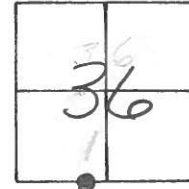
TYPE MONUMENT PK + WASHER

ON SURFACE - ~~BELOW~~ yes

~~SET - C~~ PAV'T. - ~~RIGHT~~ yes

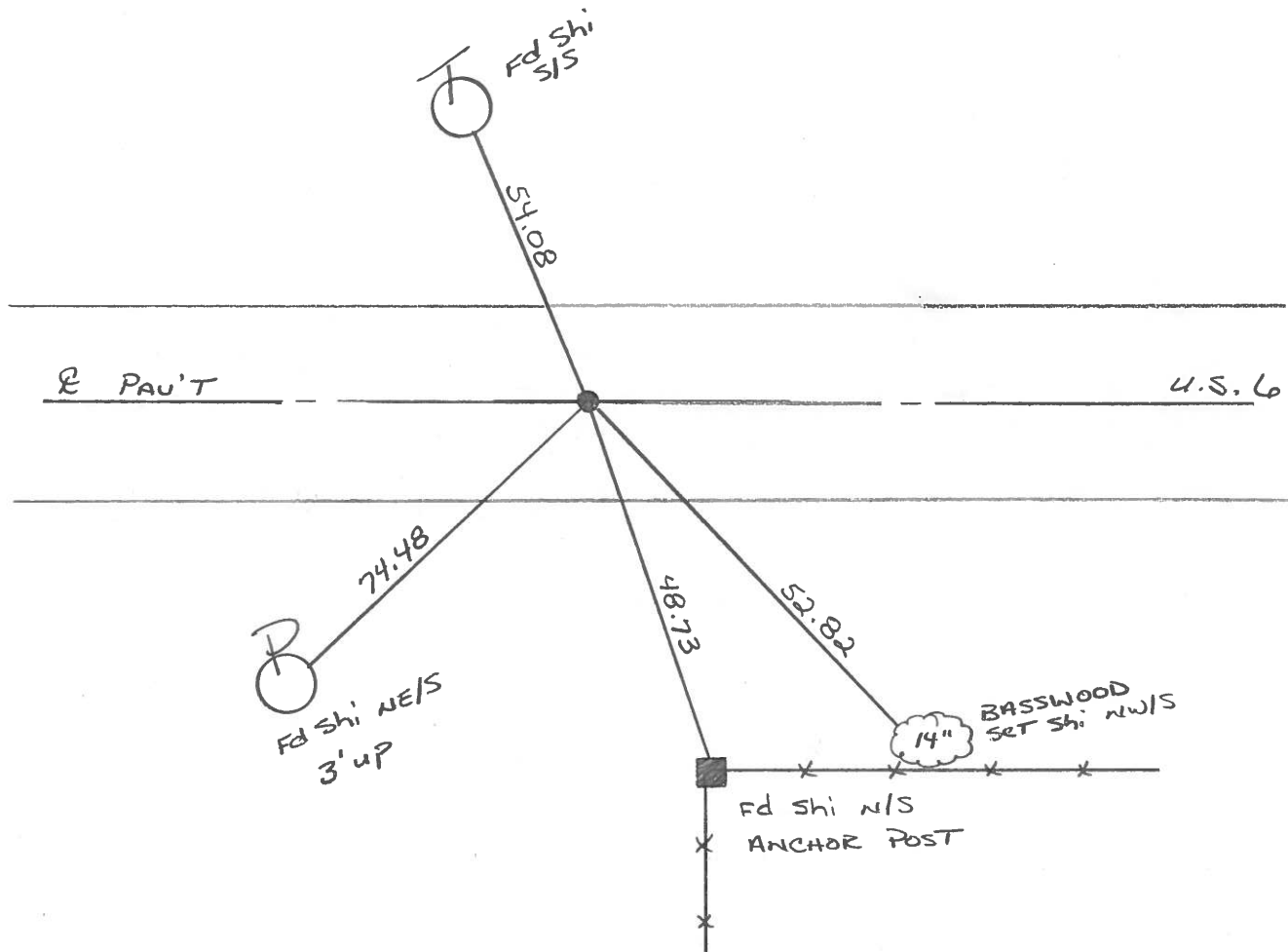
13.2 TO RT EDGE PAVEMENT

S.L.M. 282+10



RECORD  
281+43.08

Reset Sm. RR Spk  
5-7-93  
M.B.



County SANDUSKY S.R. U.S. 6

Date 8-31-83

Township MADISON

Weather P. CLEAR

Section 36

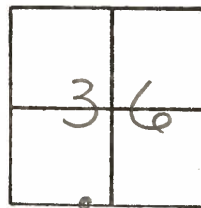
Temp. +75°

TSN, R13E

Personnel Hoffman

LOEHLKE

BARNHISEL



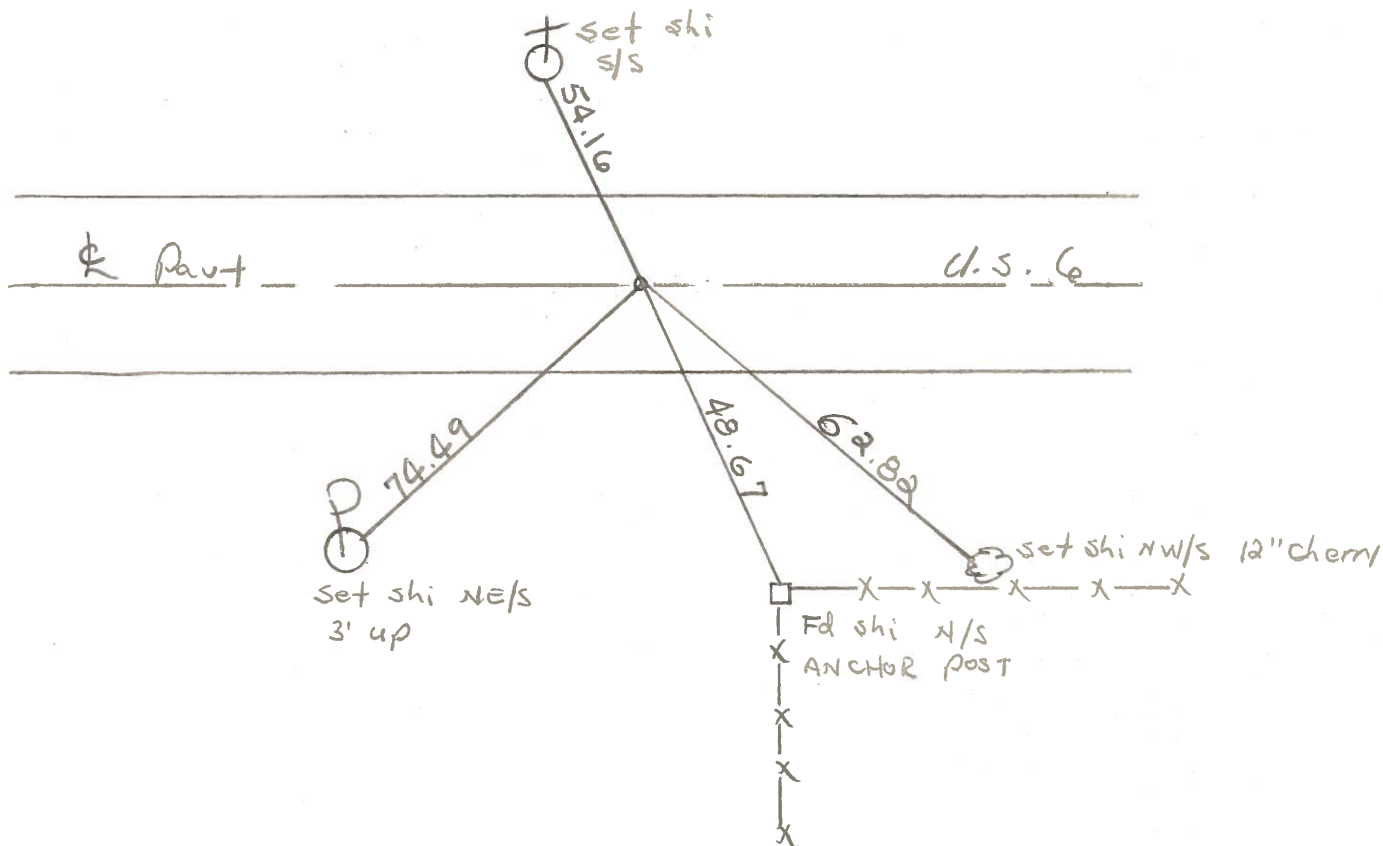
Fd SMALL Bolt SPK @ surface  
on & post

SLM = 282 + 14

Record:  
281 + 43.08

SET P.K./WASHER  
9/21/83  
S.W.H.

**10A**



PERSONNEL TITLE PERSONNEL TITLE

Schneider

Potts

COUNTY Sandusky

DATE Dec-1967

Masser

S. R. U.S. # 6

WEATHER

Barbour

SEC. Fremont - East

TEMP.

Redding

DESCRIPTION Ties for Control Points

JOB NO.

LEFT

CENTER LINE

RIGHT

