

O.D.O.T. DISTRICT 2 SURVEY OFFICE

PERSONNEL

REFERENCE NO. 11

SHEET 20 OF 26

NOTES HOMAN

DATE 8/12/09

ROUTE US6

H.C. HOMAN

WEATHER CLOUDY

COUNTY SANDUSKY

R.C. ROUSOS

TEMP. 75°

TOWNSHIP MADISON

SECTION 36

T 5 N R 13 E

TYPE MONUMENT RR SPIKE

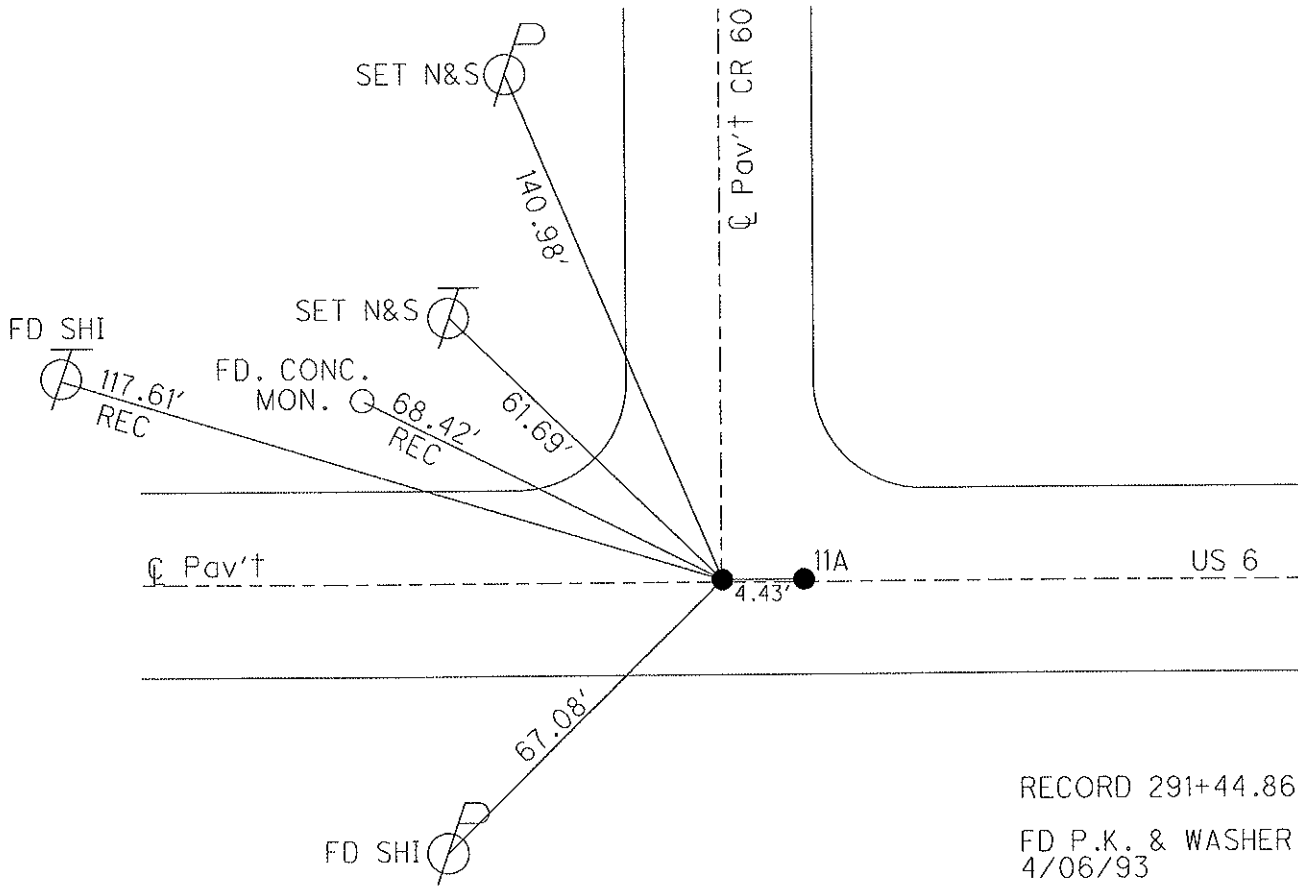
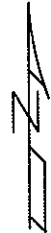
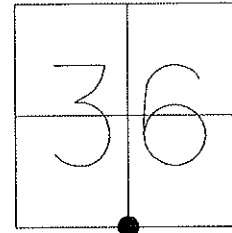
ON SURFACE - BELOW ON

~~LEFT~~ - Q PAV'T - RIGHT ON

12.7 TO RT EDGE PAVEMENT

S.L.M. 292+17

GPS Northing: 611105.170 Easting: 1745758.548



RECORD 291+44.86
 FD P.K. & WASHER
 4/06/93
 RESET SM. R.R.SPIKE
 5/7/93 M.B.
 FD R.R.SPIKE
 8/12/09 DCH
 RESET MAG & WASHER
 11/04/09 DCH

O.D.O.T. DISTRICT 2 SURVEY OFFICE

PERSONNEL

REFERENCE NO. 11

SHEET OF

NOTES BARNHISEL

H.C. VAN DUSEN

DATE 4-6-93

ROUTE 456

R.C. CORDS

WEATHER SUNNY

COUNTY SANDUSKY

GREEN

TEMP. +40°

TOWNSHIP MADISON

ORIGIN UNKNOWN

SECTION 36

PT "A"

PT "B"

T 5 N R 13 E

TYPE MONUMENT PK + WASHER + NAIL SHANK

ON SURFACE - ~~BELOW~~ YES

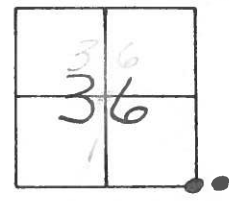
2" DOWN

~~BEHIND~~ - PAV'T. - ~~RIGHT~~ YES

yes

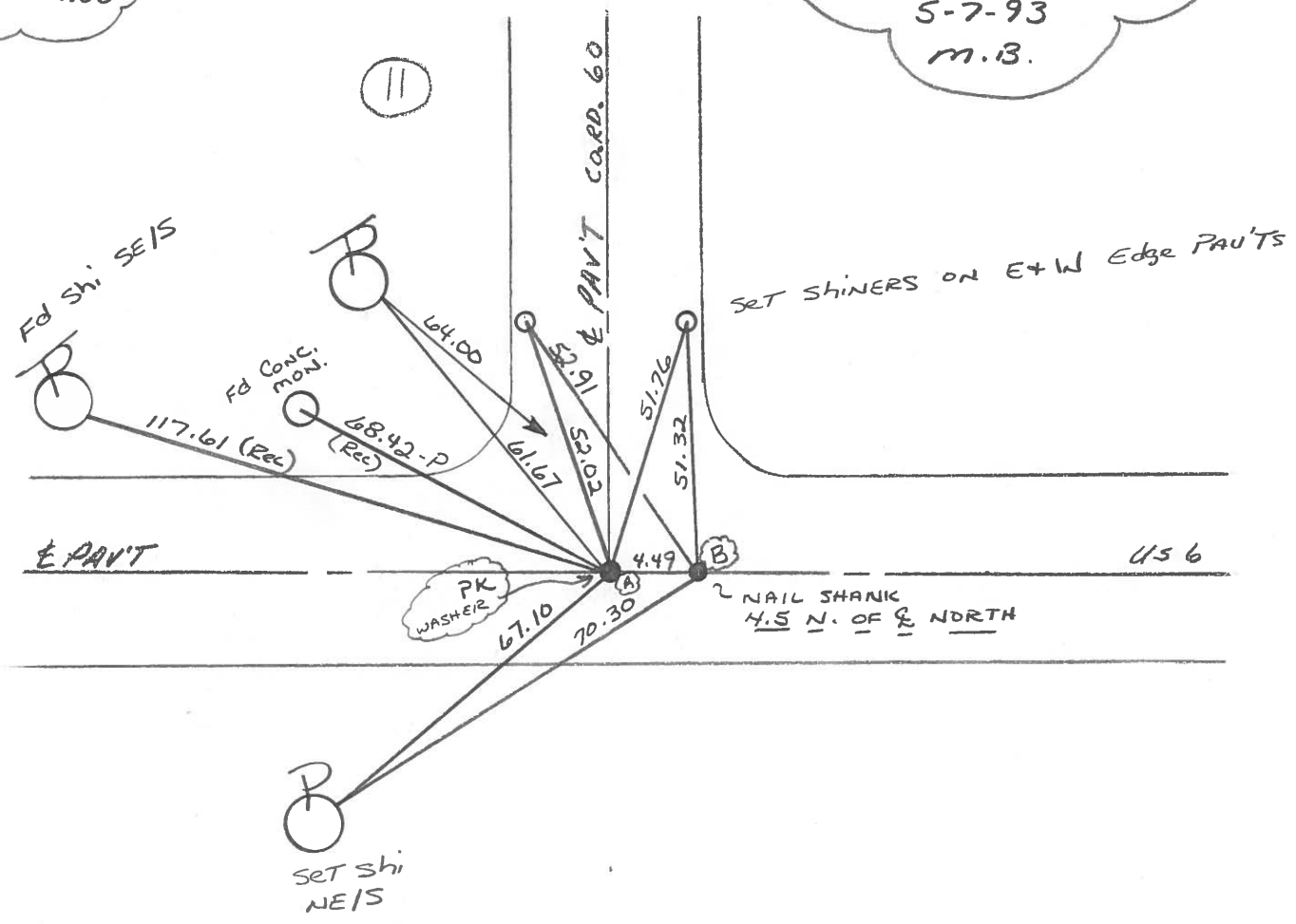
12.7 TO RT EDGE PAVEMENT - SAME -

S.L.M. PT "A" = 292+17



RECORD
291+44.86

Reset Sm. RR Spk's
5-7-93
M.B.



County SANDUSKY S.R. U.S. 6

Date 8-31-83

Township MADISON

Weather P. CLEAR

Section 36

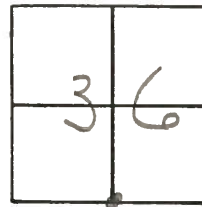
Temp. +75°

TSN, RISE

Personnel HOFFMAN

LOEHRKE

BARNHISEL



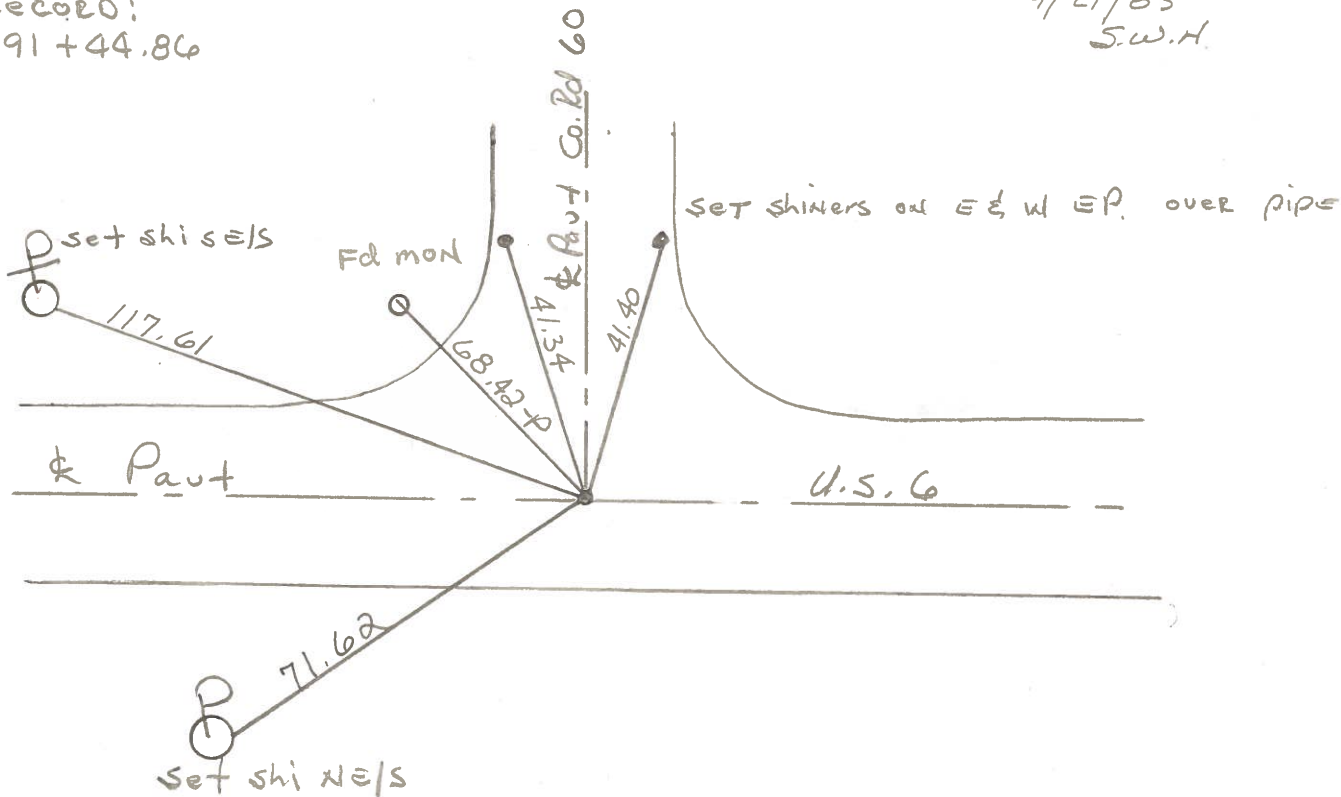
11

Fd SMALL Bolt SPK @ surface
on & BOTH PAUTS

SLM = 292 + 20

SET P.K./WASHER
9/21/83
S.W.H.

RECORD:
291 + 44.86



PERSONNEL TITLE PERSONNEL TITLE

Schneider Potts

COUNTY Sandusky DATE Dec-1967

Masser

S. R. U.S. # 6 WEATHER

Barbour

SEC. Fremont - East TEMP.

Redding

DESCRIPTION Ties for Control Points JOB NO.

LEFT CENTER LINE RIGHT

