

O.D.O.T. DISTRICT 2 SURVEY OFFICE

PERSONNEL _____

REFERENCE NO. 12

SHEET 22 OF 26

NOTES HOMAN

DATE 8/12/09

ROUTE US 6

H.C. HOMAN

WEATHER CLOUDY

COUNTY SANDUSKY

R.C. ROUSOS

TEMP. 75°

TOWNSHIP MADISON

SECTION 36

T 5 N R 13 E

TYPE MONUMENT RR SPIKE

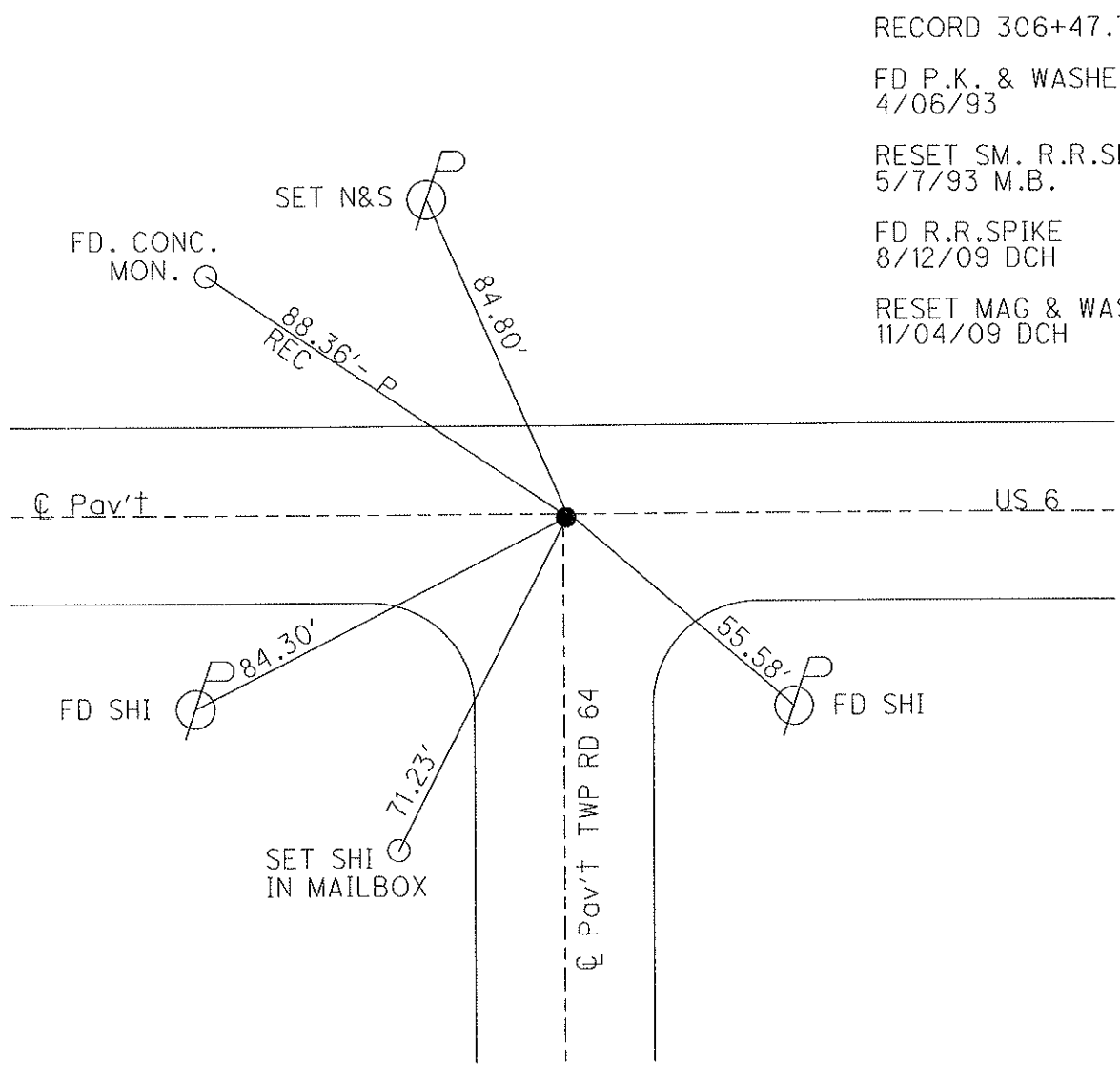
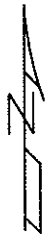
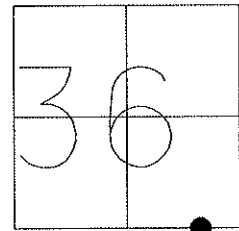
ON SURFACE - BELOW ON _____

~~LEFT~~ - Q PAV'T - ~~RIGHT~~ ON _____

11.7 TO LT. EDGE PAVEMENT

S.L.M. 307+27

GPS Northing: 61103.733 Easting: 1747260.915



RECORD 306+47.78

FD P.K. & WASHER,
4/06/93

RESET SM. R.R.SPIKE
5/7/93 M.B.

FD R.R.SPIKE
8/12/09 DCH

RESET MAG & WASHER
11/04/09 DCH

O.D.O.T. DISTRICT 2 SURVEY OFFICE

PERSONNEL

REFERENCE NO. 12

SHEET OF

NOTES BARNHISEL

H.C. VAN DUSEN

DATE 4-6-93

ROUTE US 6

R.C. CORDS

WEATHER Sunny

COUNTY SANDUSKY

GREEN

TEMP. +40°

TOWNSHIP MADISON / SCOTT

SECTION 36

T 5 N R 13 E

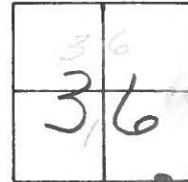
TYPE MONUMENT PK + WASHER

ON SURFACE - ~~BELOW~~ yes

~~EST - & PAV'T. - RIGHT~~ yes

11.7 TO LT EDGE PAVEMENT

S.L.M. 307+27



RECORD
306+47.78

Reset Sm. RR Spk
5-7-93
m.B.

