

O.D.O.T. DISTRICT 2 SURVEY OFFICE (USE ONLY)

PERSONNEL _____

REFERENCE NO. 14 B

SHEET 26 OF 27

NOTES RHOADES

DATE 9/26/12

ROUTE US 6

H.C. CODER

WEATHER MISTY

COUNTY SANDUSKY

R.C. RHOADES

TEMP. 70°

TOWNSHIP WASHINGTON

SECTION 31

T 5 N R 14 E

TYPE MONUMENT SM.R.R.SPIKE

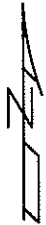
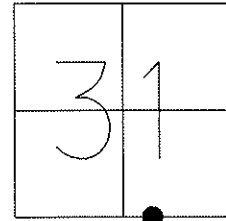
ON SURFACE - ~~BELOW~~ ON

LEFT - Q PAV'T - ~~RIGHT~~ 0.5'

21.9 TO LT. EDGE PAVEMENT

S.L.M. 346+57

GPS Northing: 611104.063 Easting: 1751186.852

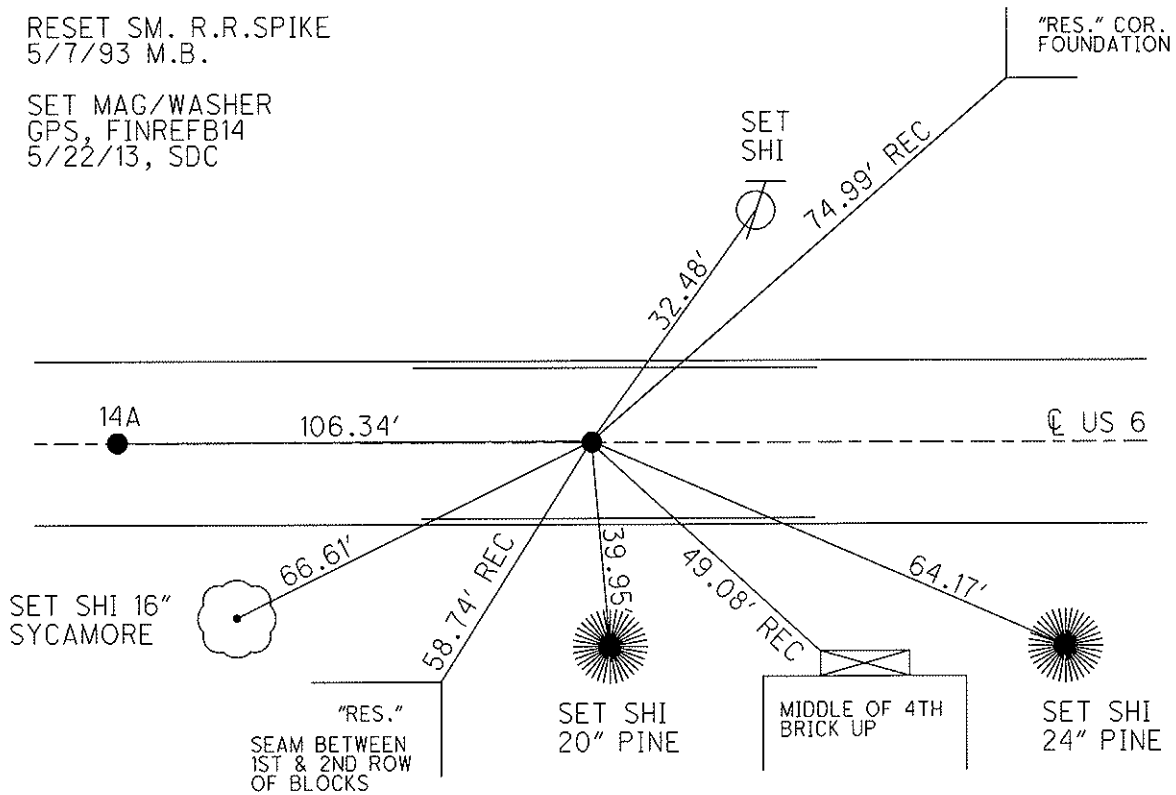


RECORD 345+75.60
IRON PIN

FD IRON PIN
4/06/93

RESET SM. R.R.SPIKE
5/7/93 M.B.

SET MAG/WASHER
GPS, FINREFB14
5/22/13, SDC



O.D.O.T. DISTRICT 2 SURVEY OFFICE

PERSONNEL

REFERENCE NO. 14-A

SHEET _____ OF _____

NOTES BARNHISEL

H.C. VAN DUSEN

DATE 4-7-93

ROUTE U.S. 6

R.C. CORDES

WEATHER SUNNY

COUNTY SANDUSKY

GREEN

TEMP. +40 F

TOWNSHIP WASHINGTON

SECTION 31

T.5 N. R. 14 E

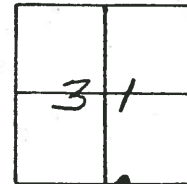
TYPE MONUMENT IRON PIN

ON ~~SURFACE~~ - BELOW 3"

LEFT- & PAV'T. - RIGHT 0.5'

21.9 TO LT. EDGE PAVEMENT

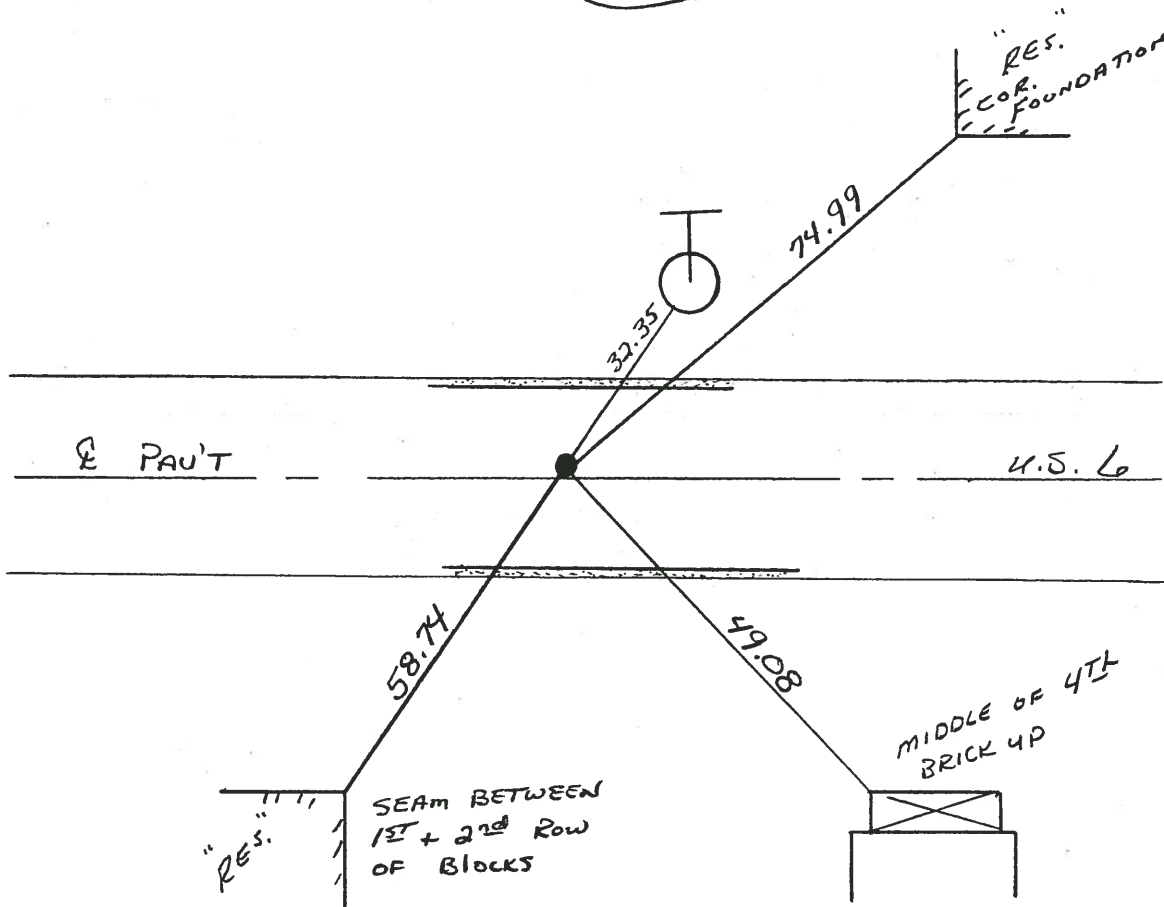
S.L.M. 346+57



14B

RECORD:
345+75.60
IRON PIN

Reset Sm. RR Spk.
5-7-93
M.B.



PERSONNEL TITLE PERSONNEL TITLE

Schneider

Potts

COUNTY SAN U Y

DATE D 1 7

Mosser

S. R. U.S. #

WEATHER

Barbour

HELENA 0

SEC. HELENA - 9

TEMP.

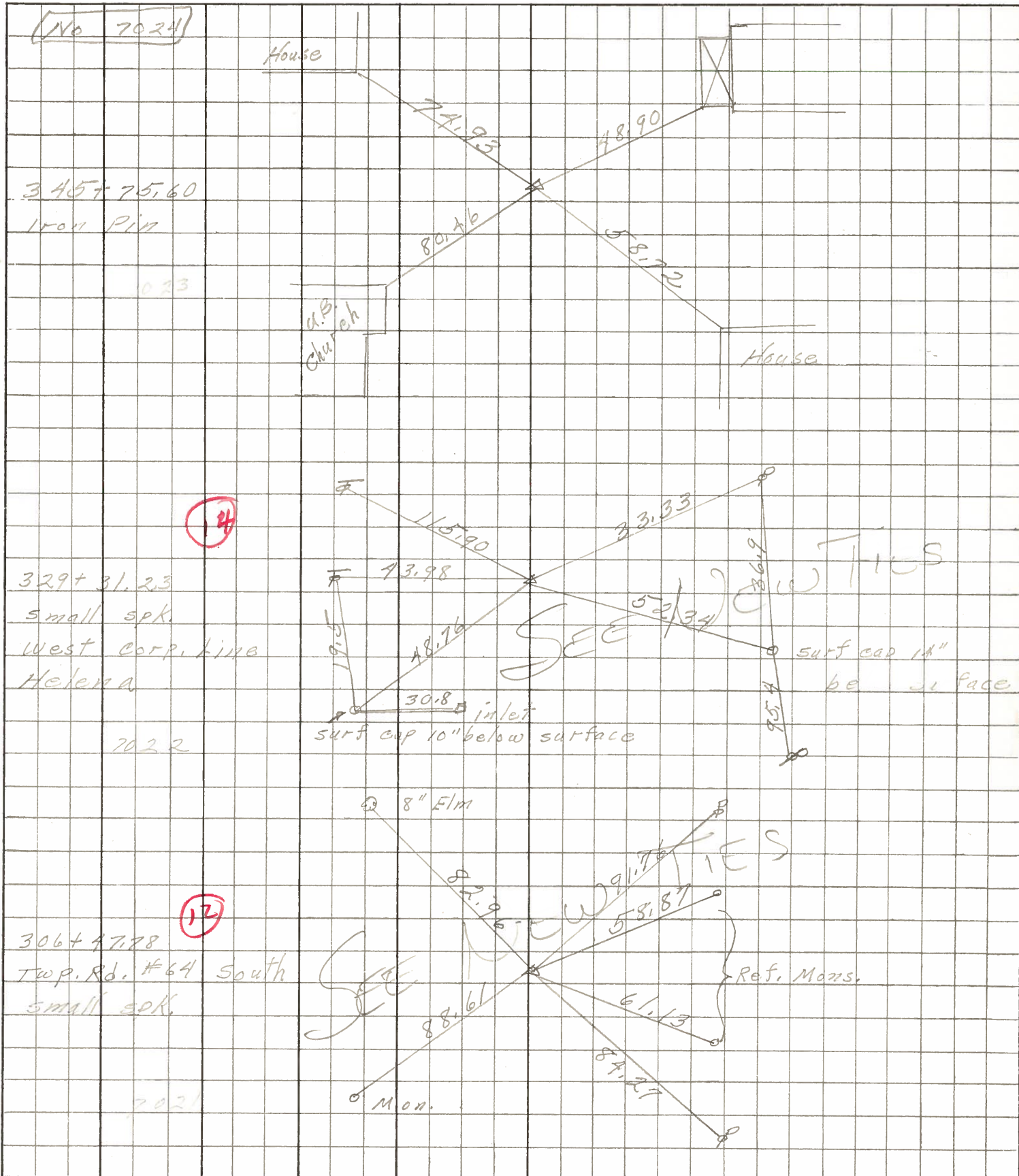
DESCRIPTION Ties for Control Point

JOB NO.

LEFT

CENTER LINE

RIGHT



(No 7024)

345+75.60
Iron Pin

023

329+31.23
small spk.
West corp. line
Helena

7022

306+47.78
Twp. Rd. #64 South
small spk.

7021