

O.D.O.T. DISTRICT 2 SURVEY OFFICE

PERSONNEL

REFERENCE NO. 15

SHEET 26 OF 26

NOTES HOMAN

DATE 7/06/04

ROUTE US 6

H.C. NUHFER

WEATHER CLOUDY

COUNTY SANDUSKY

R.C. CANTERBURY

TEMP. 70°

TOWNSHIP JACKSON

ADKINS

SECTION 6

T 4 N R 14 E

TYPE MONUMENT MON BOX W/ IRON PIN

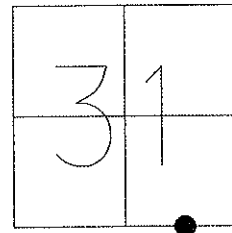
ON SURFACE - ~~BELOW~~ ON

~~LEFT~~ - Q PAV'T - ~~RIGHT~~ ON

12.4' TO RT EDGE PAVEMENT

S.L.M. 357+86

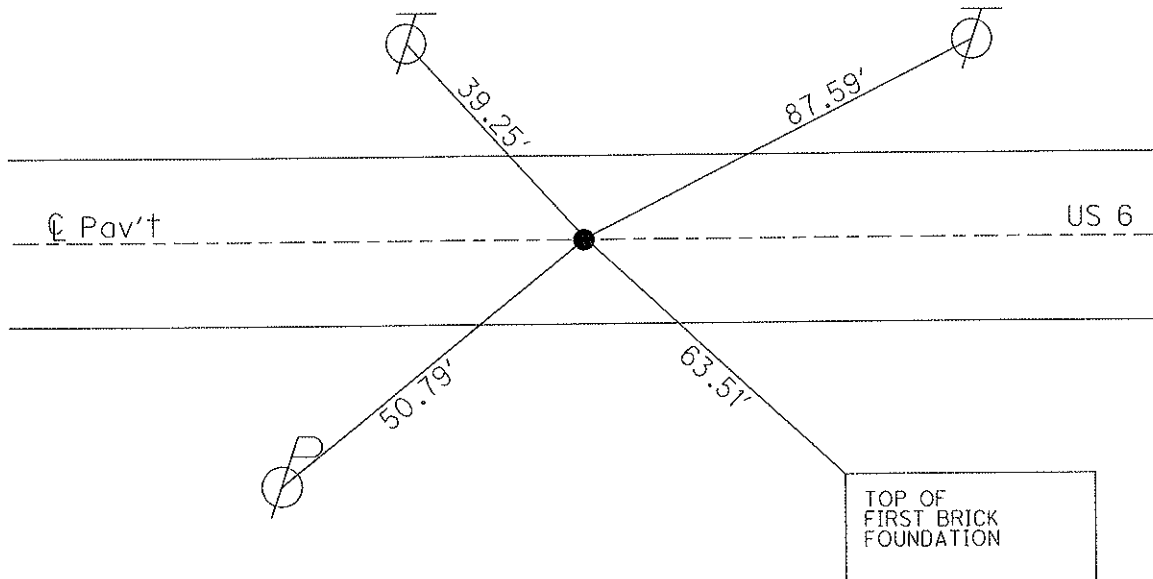
GPS Northing: \_\_\_\_\_ Easting: \_\_\_\_\_



RECORD 357+86.19  
EAST CORP. LINE HELENA

FD MON BOX  
W/ IRON PIN  
7/06/04

NOTE: ALL DISTANCES ARE  
MEASURED PLUMB TO THE  
CENTER OF IRON PIN  
INSIDE MONUMENT BOX



O.D.O.T. DISTRICT 2 SURVEY OFFICE

PERSONNEL

REFERENCE NO. 15

SHEET 1 OF 18

NOTES HOMAN \_\_\_\_\_

DATE 7-6-04

ROUTE SR 6

H.C. NUHFER \_\_\_\_\_

WEATHER CLOUDY

COUNTY SANDUSKY

R.C. CANTERBURY \_\_\_\_\_

TEMP. +70°

TOWNSHIP JACKSON

ADKINS \_\_\_\_\_

SECTION 6

T 4 N R 14 E

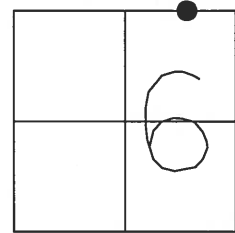
TYPE MONUMENT MON BOX W/ IRON PIN

ON SURFACE - ~~BELOW~~ \_\_\_\_\_ ON \_\_\_\_\_

~~LEFT - C~~ PAV'T - ~~RIGHT~~ \_\_\_\_\_ ON \_\_\_\_\_

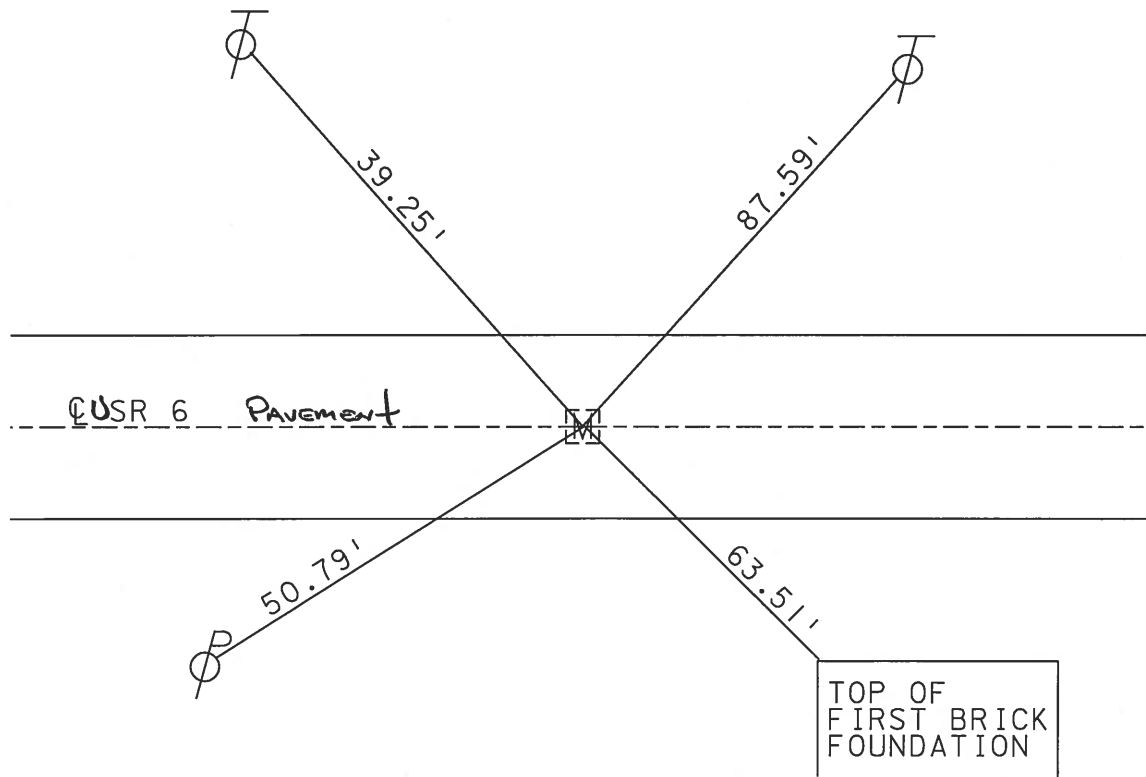
12.4' TO RT EDGE PAVEMENT

S.L.M. \_\_\_\_\_ 357+86 \_\_\_\_\_



NOTE: ALL DISTANCES ARE MEASURED PLUMB TO THE CENTER OF IRON PIN INSIDE MONUMENT BOX

Record: P.I. 357+86.19  
EAST CORP. LINE - HELENA



TOP OF FIRST BRICK FOUNDATION

Resurfaced 2004

ALL monument Boxes re-set with new boxes

### O.D.O.T. DISTRICT 2 SURVEY OFFICE

PERSONNEL

REFERENCE NO. 15

SHEET      OF     

NOTES BARNHISEL

H.C. VAN DUJEN

R.C. CORDES

GREEN

DATE 4-7-93

WEATHER CLOUDY

TEMP. +40° F

ROUTE U.S. 6

COUNTY SANDUSKY

TOWNSHIP WASHINGTON

SECTION 31

T5 NR 14 E

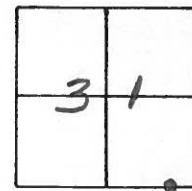
TYPE MONUMENT Mon. Box

ON SURFACE - ~~BELOW~~ YES

LEFT- & PAV'T. - RIGHT YES

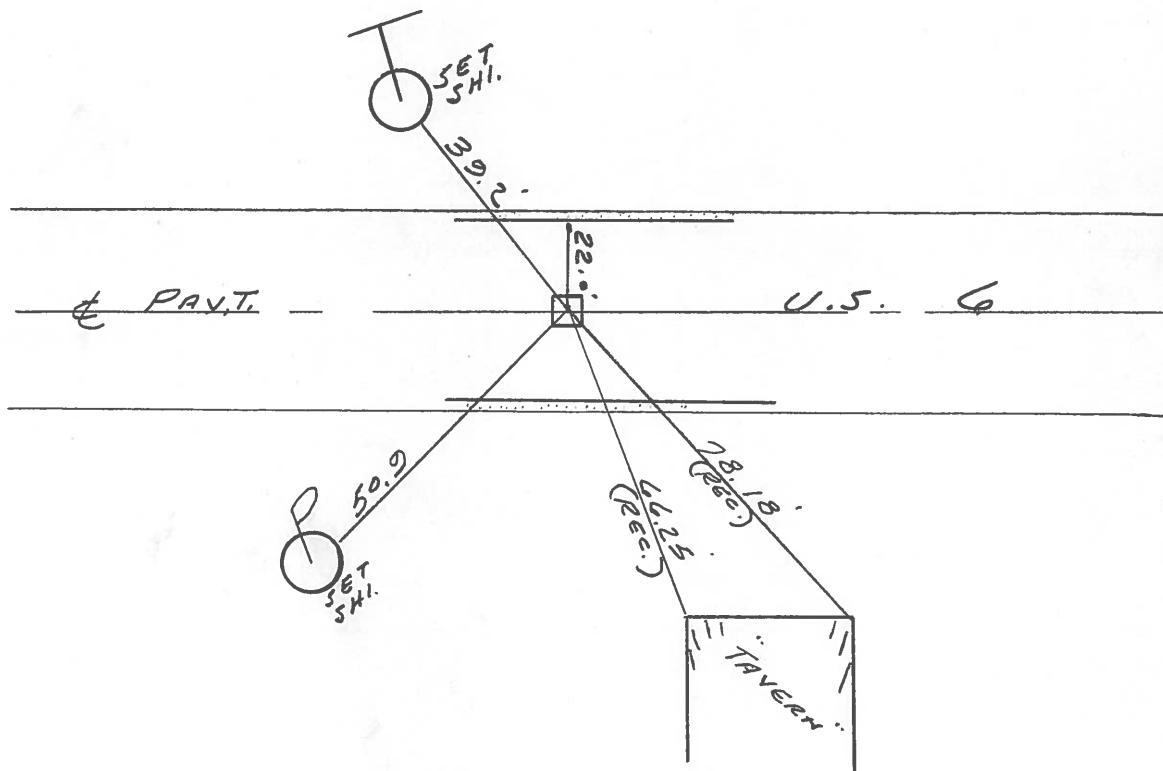
22.0' TO LT. EDGE PAVEMENT

S.L.M. 358+67



NOTE:..  
DID NOT OPEN BOX

RECORD:  
P.I. STA: 357+86.19  
EAST CORP. LINE  
HELENA



PERSONNEL TITLE PERSONNEL TITLE

Schneider Potts  
Messer  
Barbour  
Redding

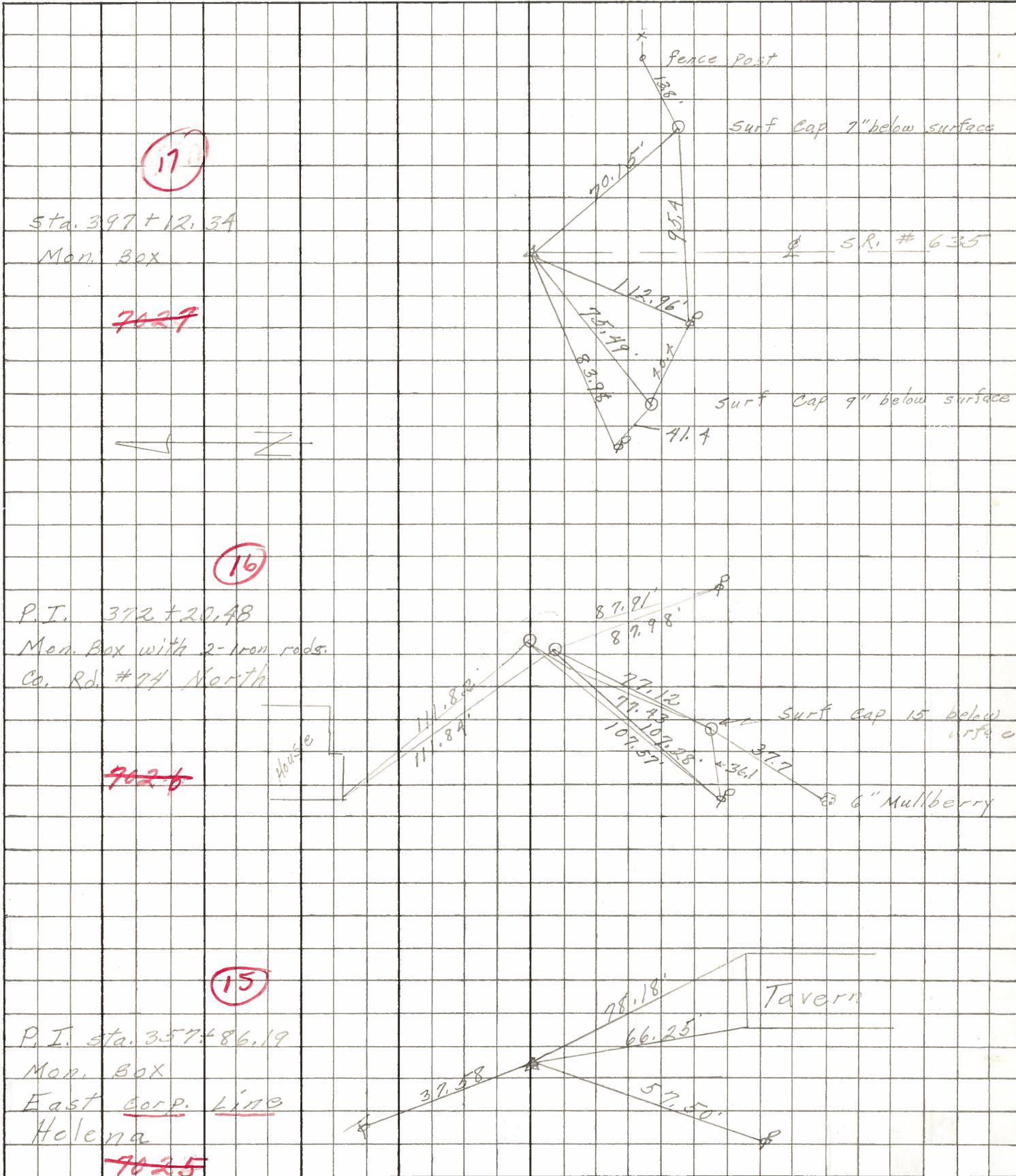
COUNTY Sandusky DATE Dec-1967

S. R. U.S. # 6 WEATHER

SEC. Helena East TEMP.

DESCRIPTION Ties for Control Points JOB NO.

LEFT CENTER LINE RIGHT



17

Sta. 397+12.34  
Man. Box

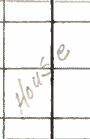
~~7027~~



16

P.I. 372+20.48  
Man. Box with 2-iron rods.  
Co. Rd. #74 North

~~7026~~



15

P.I. sta. 357+86.19  
Man. Box  
East Corp. Line  
Helena

~~7025~~

No 7024