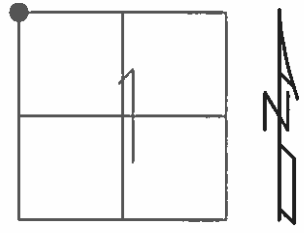


O.D.O.T. DISTRICT 2 SURVEY OFFICE (USE ONLY)

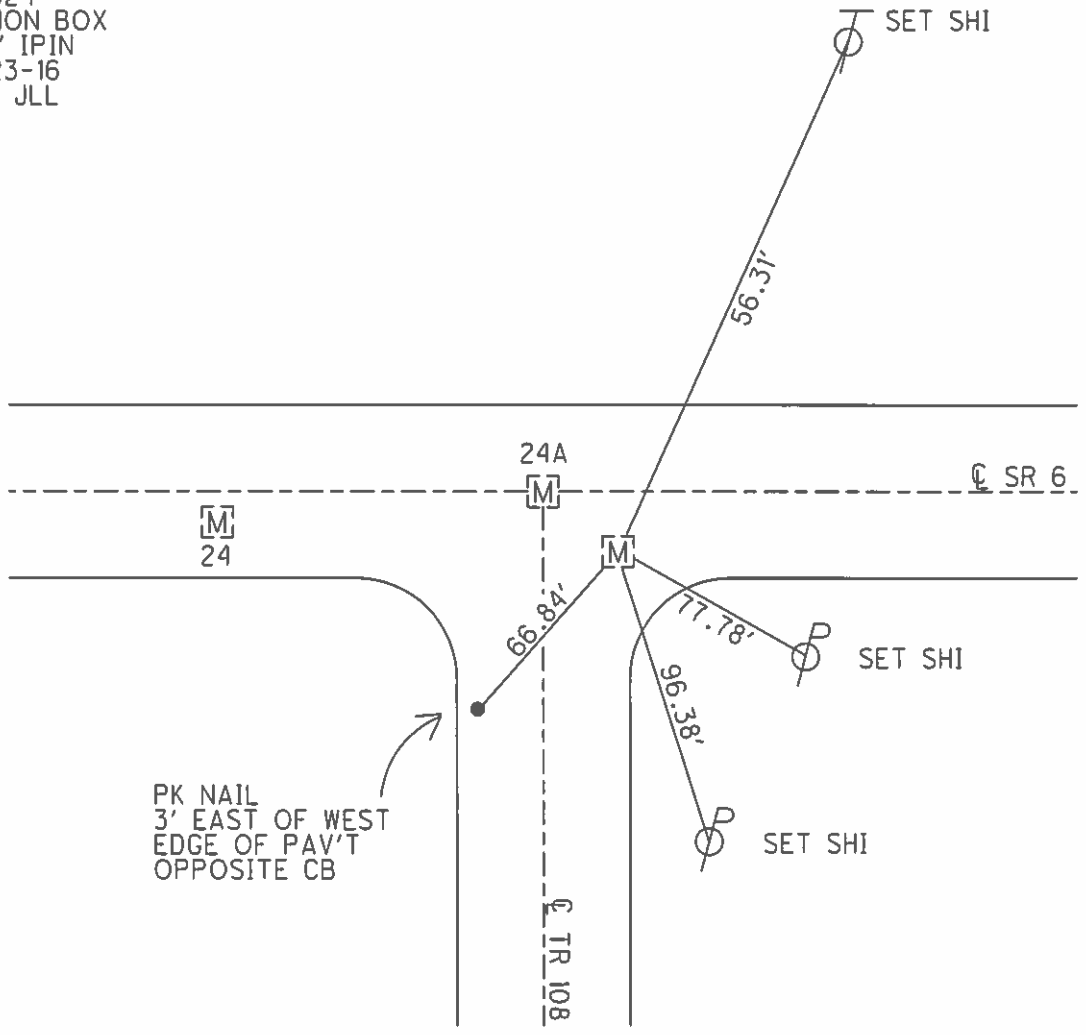
PERSONNEL	REFERENCE NO.	24 B	SHEET	19	OF	25
NOTES	HOMAN	DATE	07/07/04	ROUTE	SR 6	
H.C.	NUHFER	WEATHER	CLOUDY	COUNTY	SANDUSKY	
R.C.	CANTERBURY	TEMP.	+75°	TOWNSHIP	JACKSON	
	BARNHISEL			SECTION	1	
	HUSS ADKINS			T 4 N	R 14 E	

TYPE MONUMENT MON BOX W/ IRON PIN
 ON SURFACE - ~~BELOW~~ ON
~~LEFT - C PAV'T~~ - RIGHT 3.7'
TO EDGE PAVEMENT
 S.L.M. 585+88.94
 GRID: NORTHING: 611083.927 EASTING: 1775190.937



DISTANCE 24A-24B= 6.94'

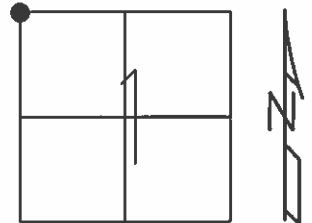
REFB24
 FD MON BOX
 W/ 1' IPIN
 06-23-16
 DCH, JLL



O.D.O.T. DISTRICT 2 SURVEY OFFICE (USE ONLY)

PERSONNEL	REFERENCE NO.	24 B	SHEET	19	OF	25
NOTES	HOMAN	DATE	7-7-04	ROUTE	SR 6	
H.C.	NUHFER	WEATHER	CLOUDY	COUNTY	SANDUSKY	
R.C.	CANTERBURY	TEMP.	+75°	TOWNSHIP	JACKSON	
	BARNHISEL			SECTION	1	
	HUSS ADKINS			T	4	N
				R	14	E

TYPE MONUMENT MON BOX W/ IRON PIN
 ON SURFACE - ~~BELOW~~ ON
~~LEFT~~ - Q PAV'T - RIGHT 3.7'
TO EDGE PAVEMENT
 S.L.M. 585+88.94
 GRID: NORTHING: _____ EASTING: _____



DISTANCE 24A-24B= 6.94'

