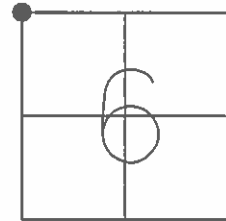


**O.D.O.T. DISTRICT 2 SURVEY OFFICE (USE ONLY)**

PERSONNEL \_\_\_\_\_ REFERENCE NO. 25 A SHEET 21 OF 25  
 NOTES HOMAN DATE 07/08/04 ROUTE SR 6  
 H.C. NUHFER WEATHER CLOUDY COUNTY SANDUSKY  
 R.C. CANTERBURY/HUSS TEMP. +65° TOWNSHIP BALLVILLE  
BARNHEISEL SECTION 6  
HUSS/ADKINS T 4 N R 15 E

TYPE MONUMENT MON BOX W/ IRON PIN  
 ON SURFACE - ~~BELOW~~ ON  
 LEFT - ~~C PAV'T~~ - ~~RIGHT~~ 4.3'  
8.1' TO LT EDGE PAVEMENT  
 S.L.M. 633+26

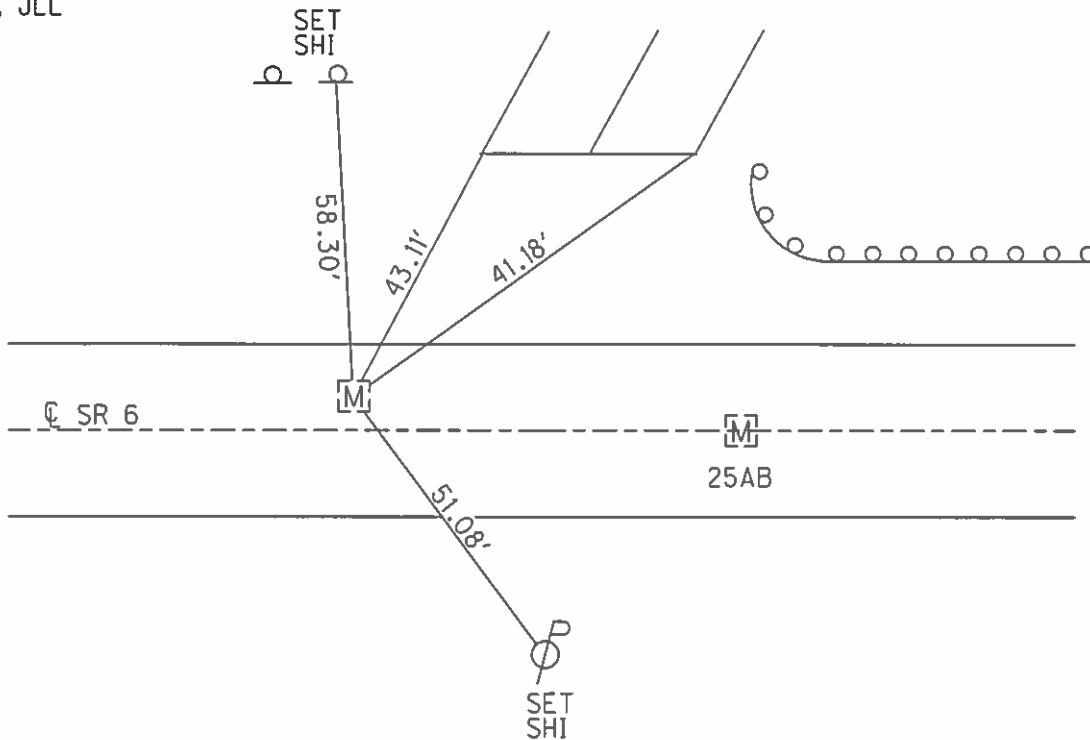


GRID: NORTHING: 611188.992 EASTING: 1779919.212

RECORD: 633+20.95

REFA25  
 FD MON BOX  
 W/ 1" IPIN  
 06-23-16  
 DCH, JLL

SET N&S  
 SET 1ST & 3RD  
 PAINT MARKING  
 PARKING LOT



O.D.O.T. DISTRICT 2 SURVEY OFFICE (USE ONLY)

PERSONNEL

REFERENCE NO. 25 A

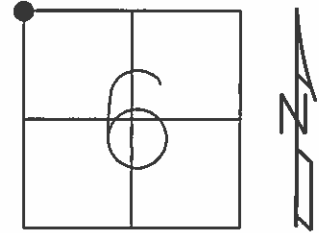
SHEET 21 OF 25

NOTES HOMAN  
 H.C. NUHFER  
 R.C. CANTERBURY/HUSS  
 BARNHISEL  
 HUSS/ADKINS

DATE 7-8-04  
 WEATHER CLOUDY  
 TEMP. +65°

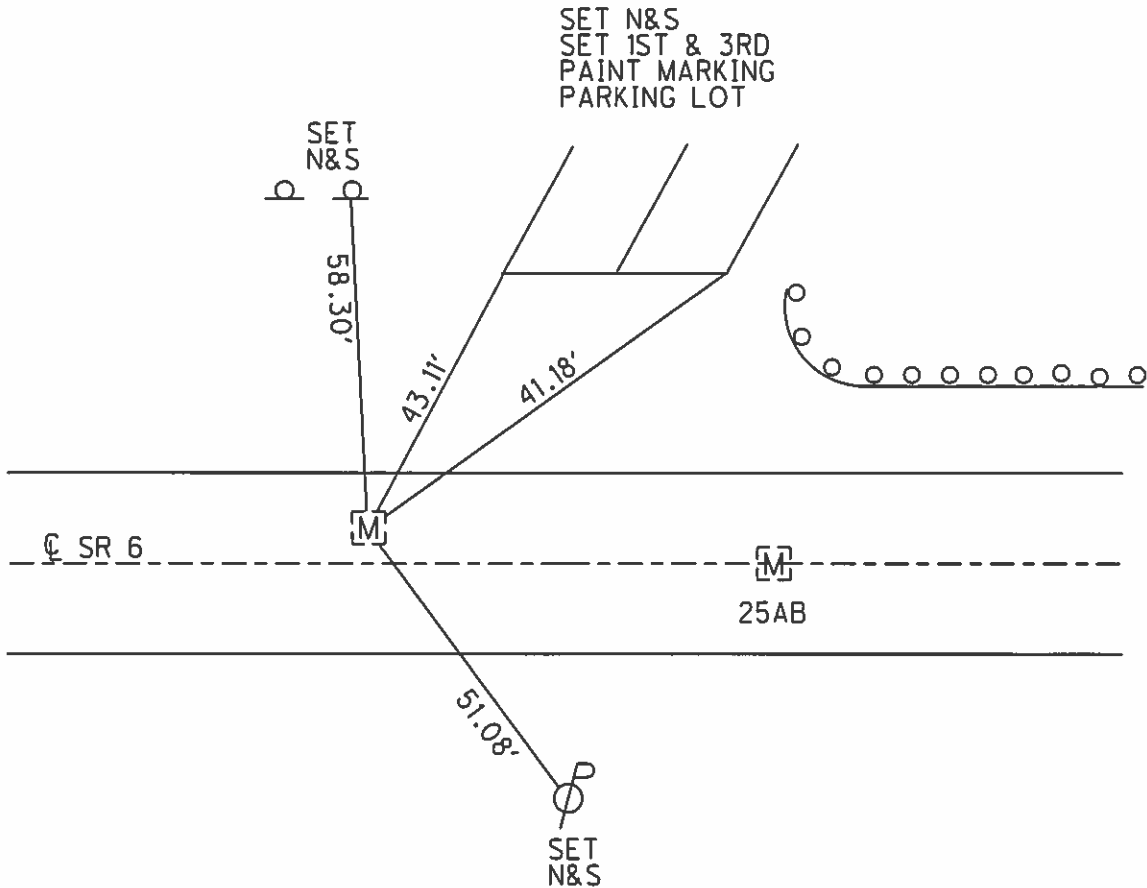
ROUTE SR 6  
 COUNTY SANDUSKY  
 TOWNSHIP BALLVILLE  
 SECTION 6  
 T 4 N R 15 E

TYPE MONUMENT MON BOX W/ IRON PIN  
 ON SURFACE - ~~BELOW~~ ON  
 LEFT -  $\text{C}$  PAV'T ~~= RIGHT~~ 4.3'  
 8.1' TO LT EDGE PAVEMENT  
 S.L.M. 633+26



GRID: NORTHING: \_\_\_\_\_ EASTING: \_\_\_\_\_

RECORD: 633+20.95



PERSONNEL	TITLE	PERSONNEL	TITLE	COUNTY	DATE	WEATHER	TEMP.
Schneider				Sandusky	Dec. 2		
Bardow				S. R. U.S. #6			
Redding				SEC. Helena East			

DESCRIPTION ings for central line JOB NO. \_\_\_\_\_

