

O.D.O.T. DISTRICT 2 SURVEY OFFICE (USE ONLY)

PERSONNEL \_\_\_\_\_ REFERENCE NO. 28 SHEET 2 OF 18  
 NOTES LEU DATE 6/17/19 ROUTE US 6  
 H.C. LEU WEATHER CLOUDY COUNTY SANDUSKY  
 R.C. AUBLE TEMP. 63° TOWNSHIP SANDUSKY  
 DWG BY GARRETT PID 77825 SECTION 25  
 T 5 N R 15 E

TYPE MONUMENT MONBOX W/ 1" IPIN

ON SURFACE - ~~BELOW~~ ON

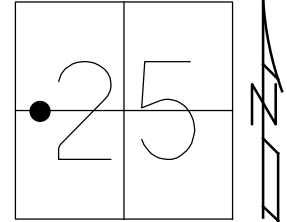
OFFSET ☉ PAVEMENT 2.6' LT : ~~RT~~

- TO - EDGE PAVEMENT

STATION: 983+31.04

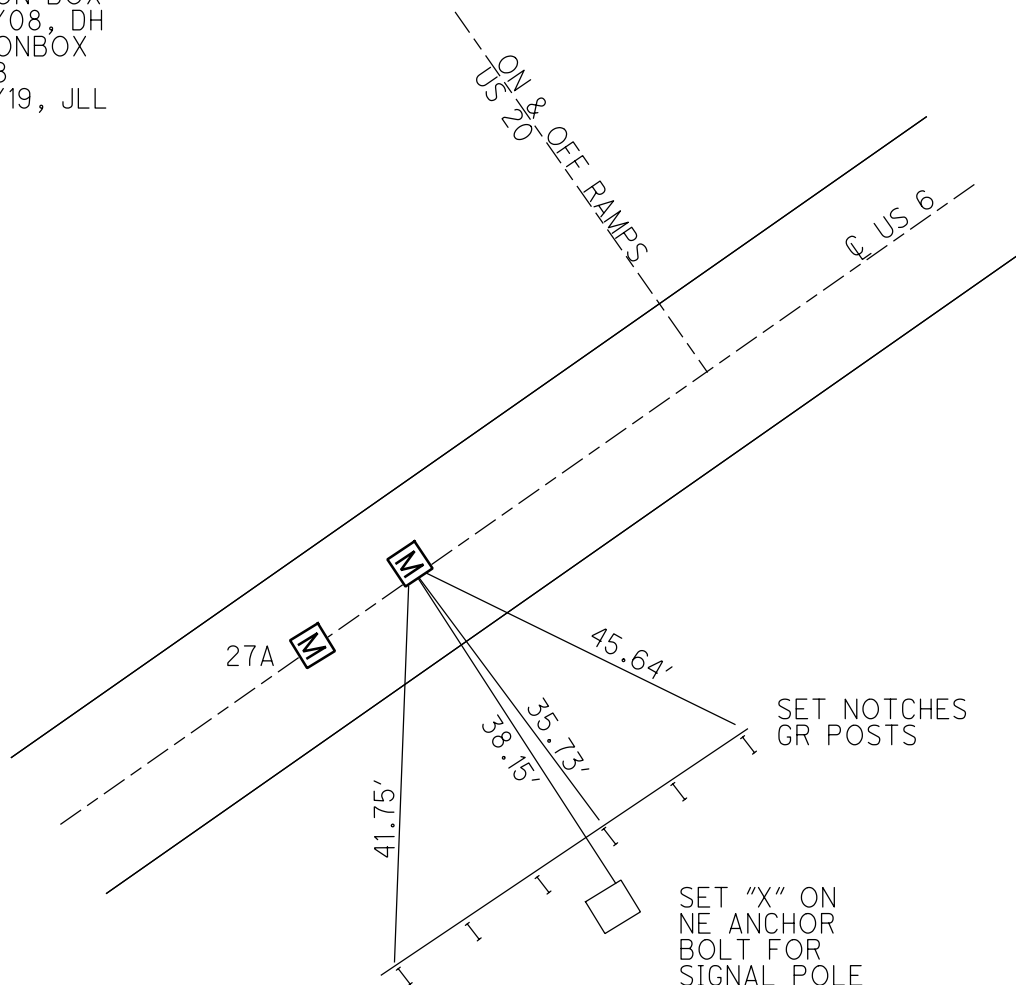
HORZ.DATUM: NAD83 (2011) GEOID: 2012A

GRID: NORTHING: 618098.396 EASTING: 1807119.567



RECORD:  
 FD MON BOX  
 6/10/08, DH  
 FD MONBOX  
 REF28  
 11/15/19, JLL

DIST, 27A-28= 5.18'



O.D.O.T. DISTRICT 2 SURVEY OFFICE

PERSONNEL

REFERENCE NO. 28

SHEET 2 OF 17

NOTES HOMAN

DATE 8/06/09

ROUTE US 6

H.C. HOMAN

WEATHER SUNNY

COUNTY SANDUSKY

R.C. ROUSOS

TEMP. 70°

TOWNSHIP SANDUSKY

SECTION 25

T 5 N R 15 E

TYPE MONUMENT MON.BOX

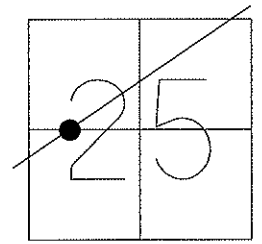
ON SURFACE - ~~BELOW~~ ON

~~LEFT~~ - Q PAV'T - RIGHT 2.43'

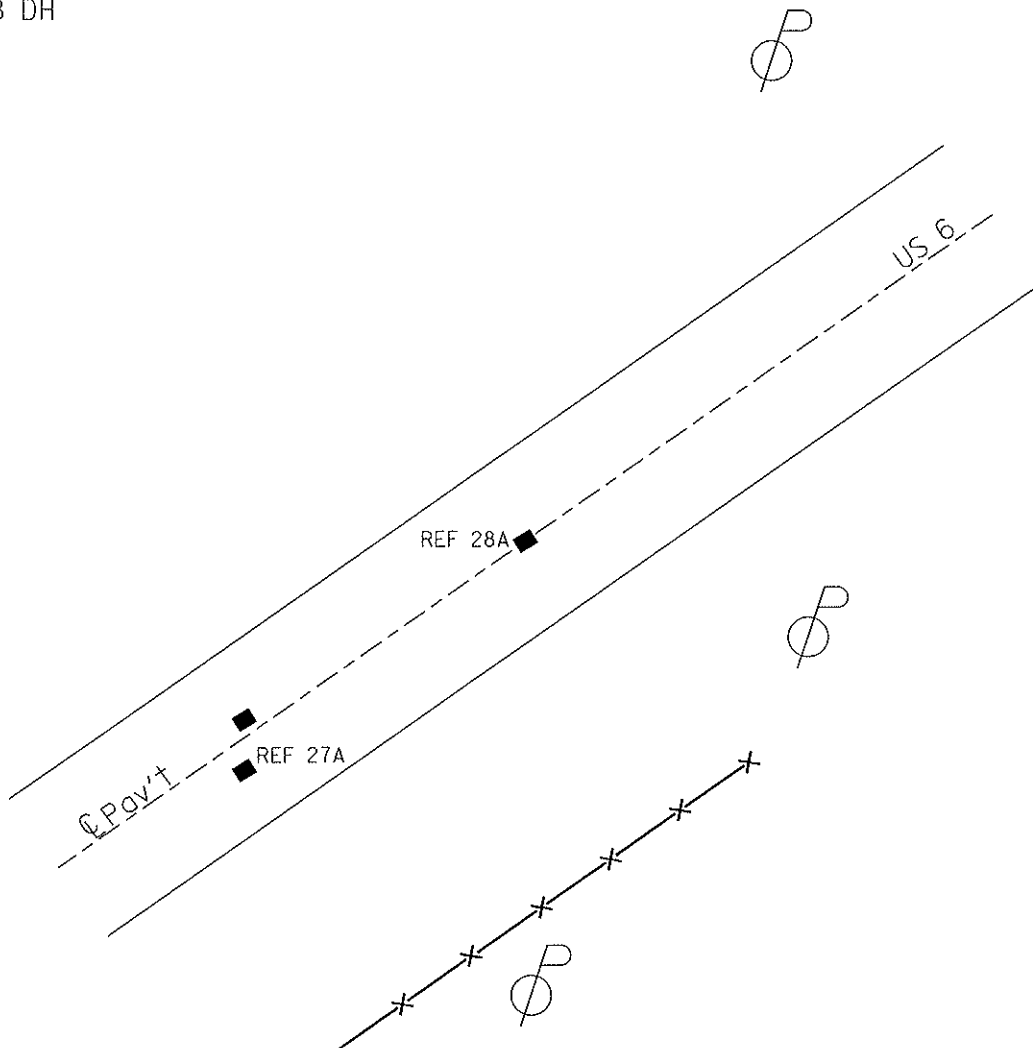
TO EDGE PAVEMENT

S.L.M. 983+31.04

GPS Northing: 618098.309 Easting: 1807119.505



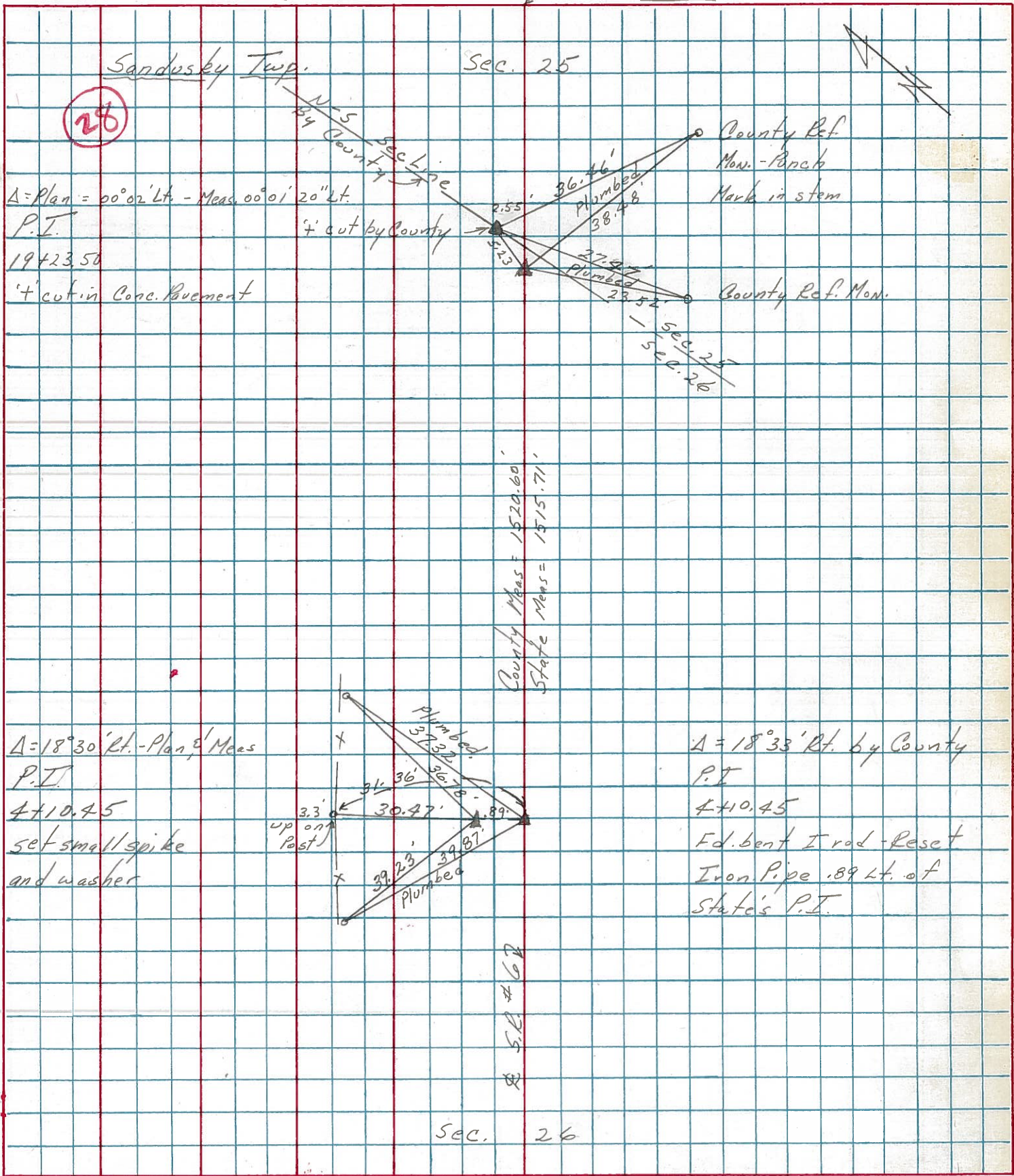
FD MON BOX  
6/10/08 DH



PERSONNEL TITLE PERSONNEL TITLE  
 Cronin \_\_\_\_\_ Schneider \_\_\_\_\_  
 Ash \_\_\_\_\_ Barbour \_\_\_\_\_  
 Geyman \_\_\_\_\_ \_\_\_\_\_

COUNTY Sandusky DATE 7/8/75  
 S. R. #6 WEATHER Sunny  
 SEC. "4" - Fremont - East TEMP. 85°

DESCRIPTION Ties for Control Points LEFT CENTER LINE RIGHT JOB NO.



$\Delta = \text{Plan} = 00^\circ 02' \text{ Lt.} - \text{Meas. } 00^\circ 01' 20'' \text{ Lt.}$

P.I.

19423.50

'4' cut in Conc. Pavement

$\Delta = 18^\circ 30' \text{ Rt.} - \text{Plan, \& Meas}$

P.I.

4+10.45

set small spike and washer

$\Delta = 18^\circ 33' \text{ Rt. by County}$

P.I.

4+10.45

Fd. bent I rod - Reset Iron Pipe .89 Lt. of State's P.I.