

O.D.O.T. DISTRICT 2 SURVEY OFFICE (USE ONLY)

PERSONNEL

REFERENCE NO. 28 AA

SHEET 3 OF 18

NOTES LEU
 H.C. LEU
 R.C. MILLER

DATE 5/14/19
 WEATHER SUNNY
 TEMP. 53°

ROUTE US 6
 COUNTY SANDUSKY
 TOWNSHIP SANDUSKY
 SECTION 25
 T 5 N R 15 E

DWG BY GARRETT PID 77825

TYPE MONUMENT MONBOX W/ 1" IPIN

ON SURFACE - ~~BELOW~~ ON

OFFSET ☐ PAVEMENT ON LT : RT
- TO - EDGE PAVEMENT

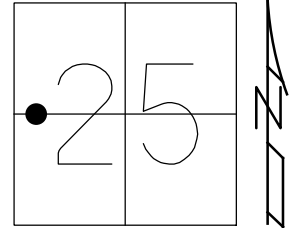
STATION: 992+00

HORZ. DATUM: NAD83 (2011)

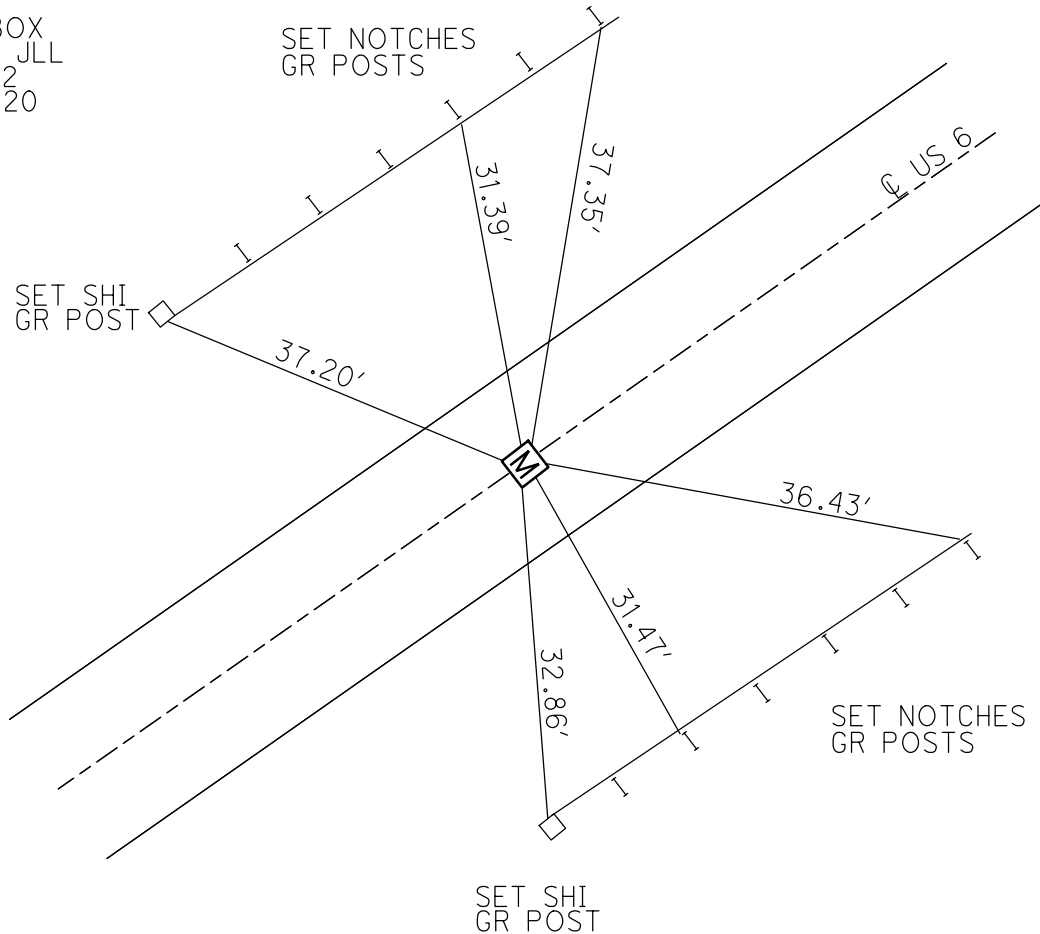
GEOID: 2012A

GRID: NORTHING: 618616.178

EASTING: 1807817.373



RECORD:
 FD MONBOX
 11/15/19, JLL
 CKSTA992
 5/27/2020



O.D.O.T. DISTRICT 2 SURVEY OFFICE

PERSONNEL _____

REFERENCE NO. 28

SHEET 2 OF 17

NOTES HOMAN

DATE 8/06/09

ROUTE US 6

H.C. HOMAN

WEATHER SUNNY

COUNTY SANDUSKY

R.C. ROUSOS

TEMP. 70°

TOWNSHIP SANDUSKY

SECTION 25

T 5 N R 15 E

TYPE MONUMENT MON.BOX

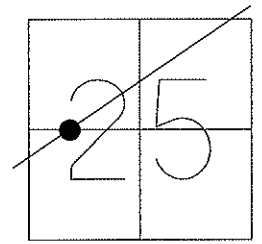
ON SURFACE - ~~BELOW~~ ON

~~LEFT~~ - Q PAV'T - RIGHT 2.43'

TO EDGE PAVEMENT

S.L.M. 983+31.04

GPS Northing: 618098.309 Easting: 1807119.505



FD MON BOX
6/10/08 DH

