

O.D.O.T. DISTRICT 2 SURVEY OFFICE

PERSONNEL

REFERENCE NO. 28-A

SHEET 3 OF 17

NOTES HOMAN

DATE 8/06/09

ROUTE US 6

H.C. HOMAN

WEATHER SUNNY

COUNTY SANDUSKY

R.C. ROUSOS

TEMP. 70°

TOWNSHIP SANDUSKY

SECTION 25

T 5 N R 15 E

TYPE MONUMENT MON.BOX

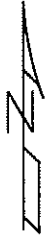
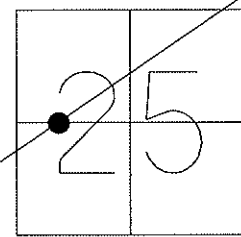
ON SURFACE - ~~BELOW~~ ON

~~LEFT -~~ Q PAV'T - ~~RIGHT~~ ON

TO EDGE PAVEMENT

S.L.M. 999+66.74

GPS Northing: 619074.832 Easting: 1808431.725

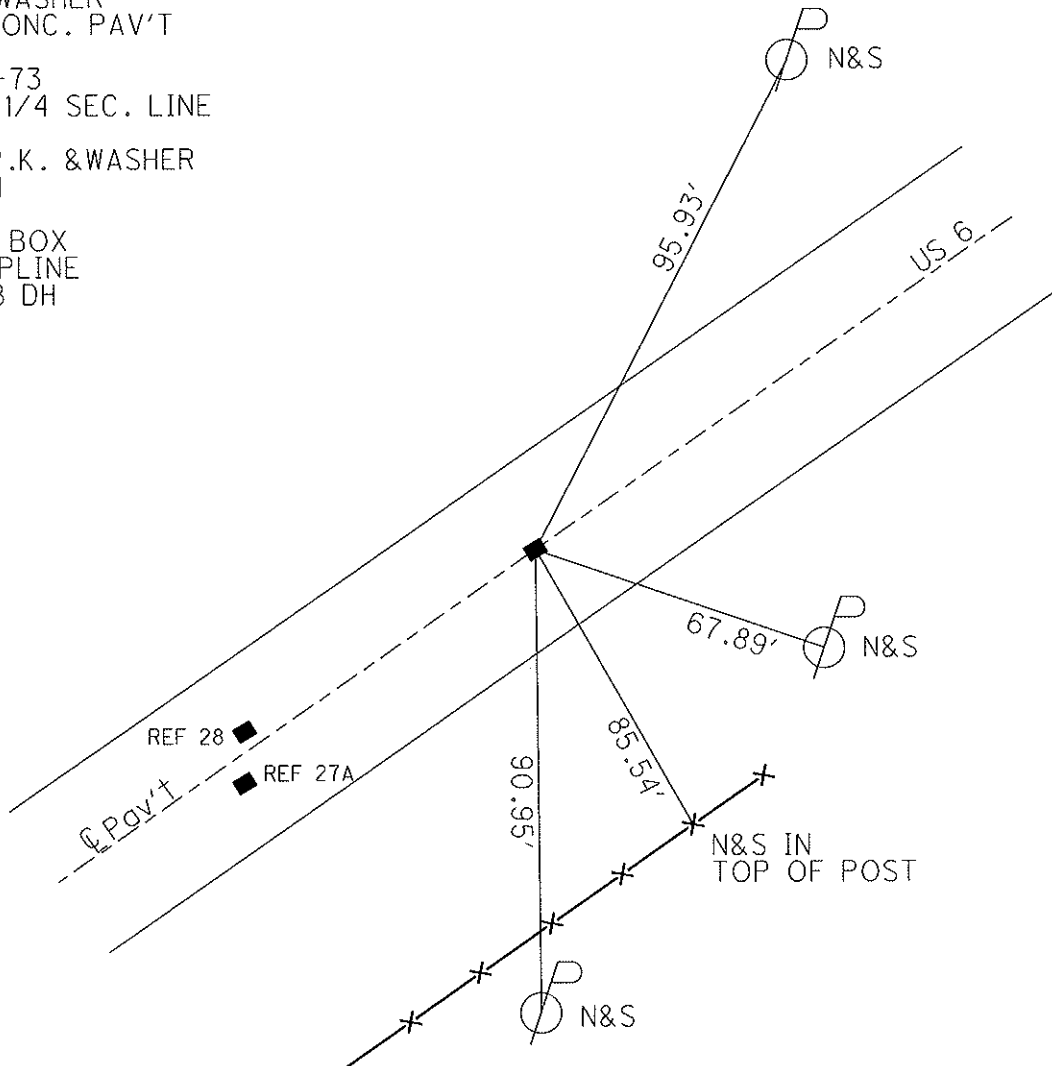


NOTE: 9/03/91
PREVIOUS MONUMENTS:
P.K. & WASHER
"+" IN CONC. PAV'T

P.I. 35+73
ON N-S 1/4 SEC. LINE

RESET P.K. & WASHER
9/03/91

FD MON BOX
ON CORPLINE
6/10/08 DH



O.D.O.T. DISTRICT 2 SURVEY OFFICE

PERSONNEL

REFERENCE NO. 28-A

SHEET 1 OF 39

NOTES RIPPLE

H.C. BARBOUR

DATE 9-03-91

ROUTE 6

R.C. GEYMAN

WEATHER _____

COUNTY SANDUSKY

TEMP. 90°

TOWNSHIP SANDUSKY

SECTION 25

T5NR15E

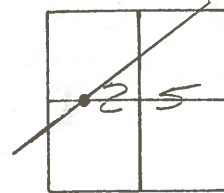
TYPE MONUMENT Re-set PK. / Washer

ON SURFACE - BELOW yes

LEFT - & PAV'T. - RIGHT yes

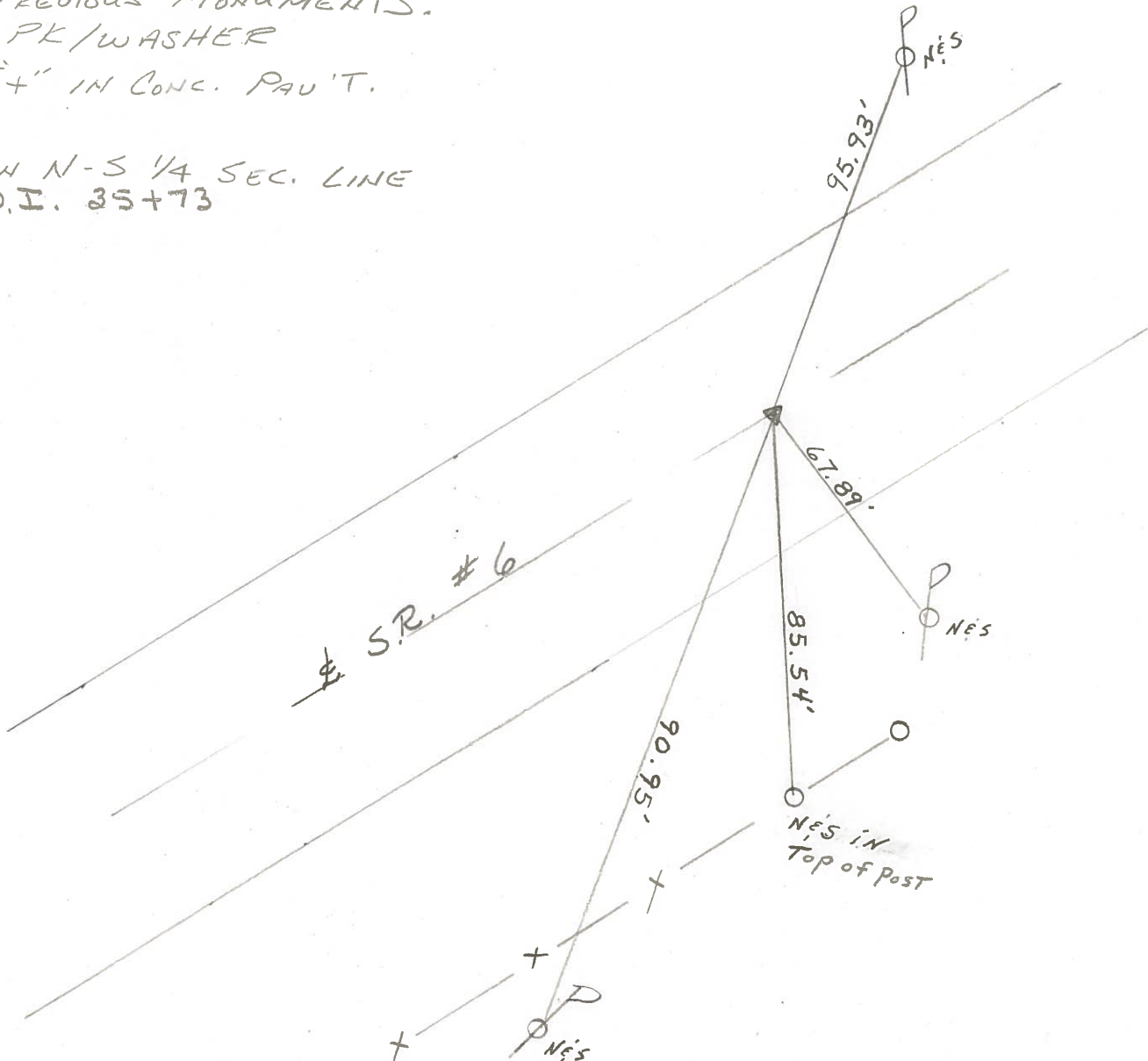
TO EDGE PAVEMENT

S.L.M. 1008+16



PREVIOUS MONUMENTS:
 PK/WASHER
 "+" IN CONC. PAV'T.

ON N-S 1/4 SEC. LINE
 P.I. 35+73



PERSONNEL TITLE PERSONNEL TITLE

Crozier Schneider
Ash Barbour
Goyman

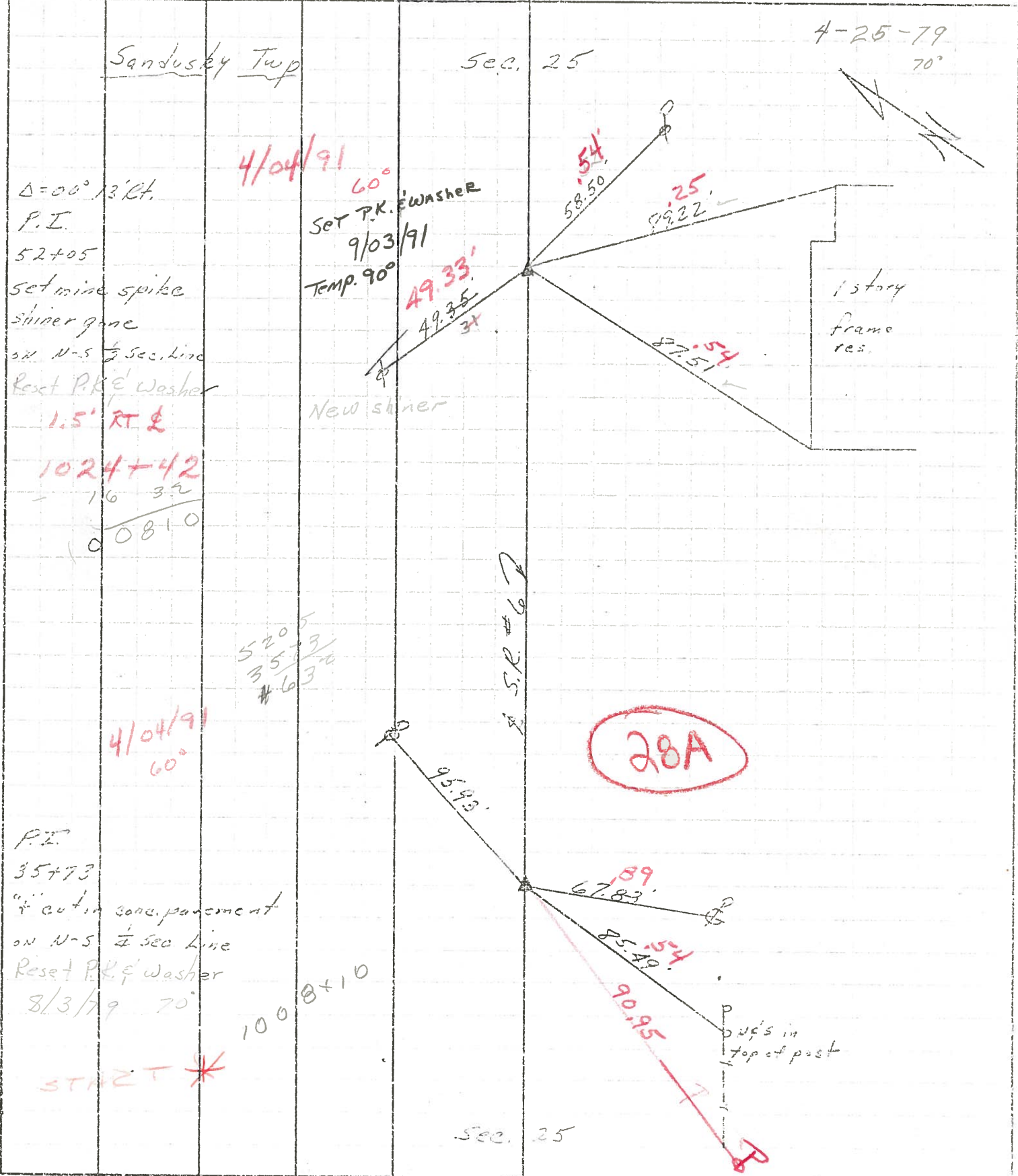
COUNTY Sandusky DATE 7/9/75

S. R. #6 WEATHER 54.704

SEC. "Y" - Fremont - East TEMP. 68°

DESCRIPTION Ties for Control Points

LEFT CENTER LINE RIGHT JOB NO.

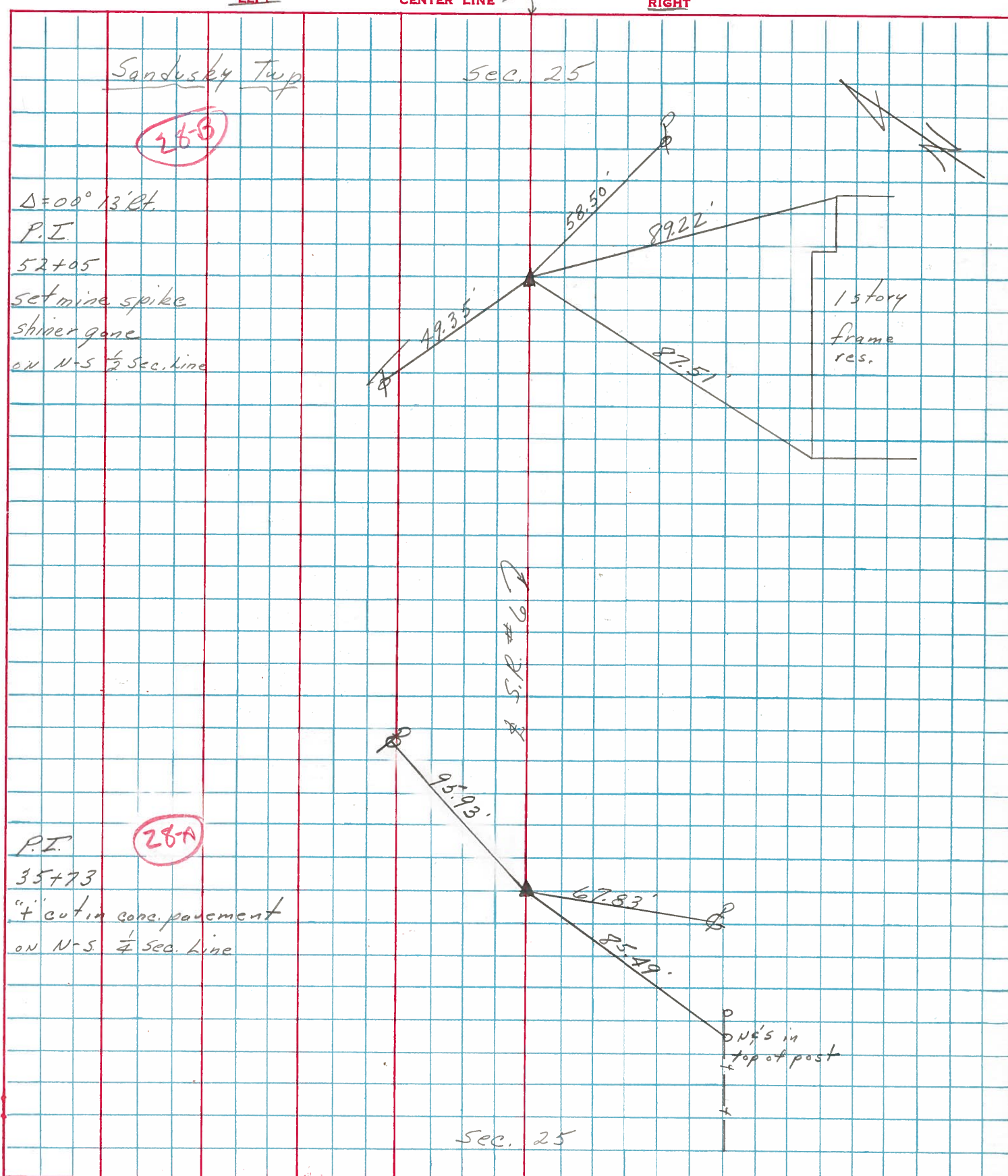


PERSONNEL	TITLE	PERSONNEL	TITLE
Cronin		Schneider	
Ash		Barbour	
Geyman			

COUNTY Sandusky DATE 7/9/75
 S. R. #6 WEATHER sunny
 SEC. "4" - Fremont - East TEMP. 68°

DESCRIPTION Ties for Control Points

JOB NO.



Sandusky Twp
 (26-B)
 $\Delta = 00^\circ 13' \text{ Rt.}$
 P.I.
 52+05
 set mine spike
 shiver gone
 on N-S $\frac{1}{2}$ Sec. line

P.I. (28-A)
 35+73
 "f" cut in conc. pavement
 on N-S $\frac{1}{4}$ Sec. line

Sec. 25