

O.D.O.T. DISTRICT 2 SURVEY OFFICE

PERSONNEL _____

REFERENCE NO. 28-B

SHEET 4 OF 17

NOTES HOMAN

DATE 8/06/09

ROUTE US 6

H.C. HOMAN

WEATHER SUNNY

COUNTY SANDUSKY

R.C. ROUSOS

TEMP. 70°

TOWNSHIP SANDUSKY

SECTION 25

T 5 N R 15 E

TYPE MONUMENT _____ P.K. _____

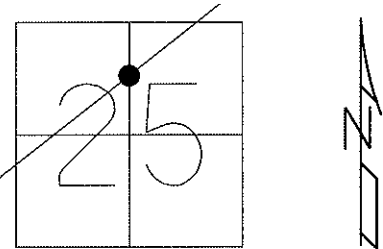
~~ON SURFACE~~ - BELOW 3"

~~LEFT~~ - Q PAV'T - RIGHT 1.5'

_____ TO _____ EDGE PAVEMENT

S.L.M. 1016+09.50

GPS Northing: 620056.653 Easting: 1809748.783

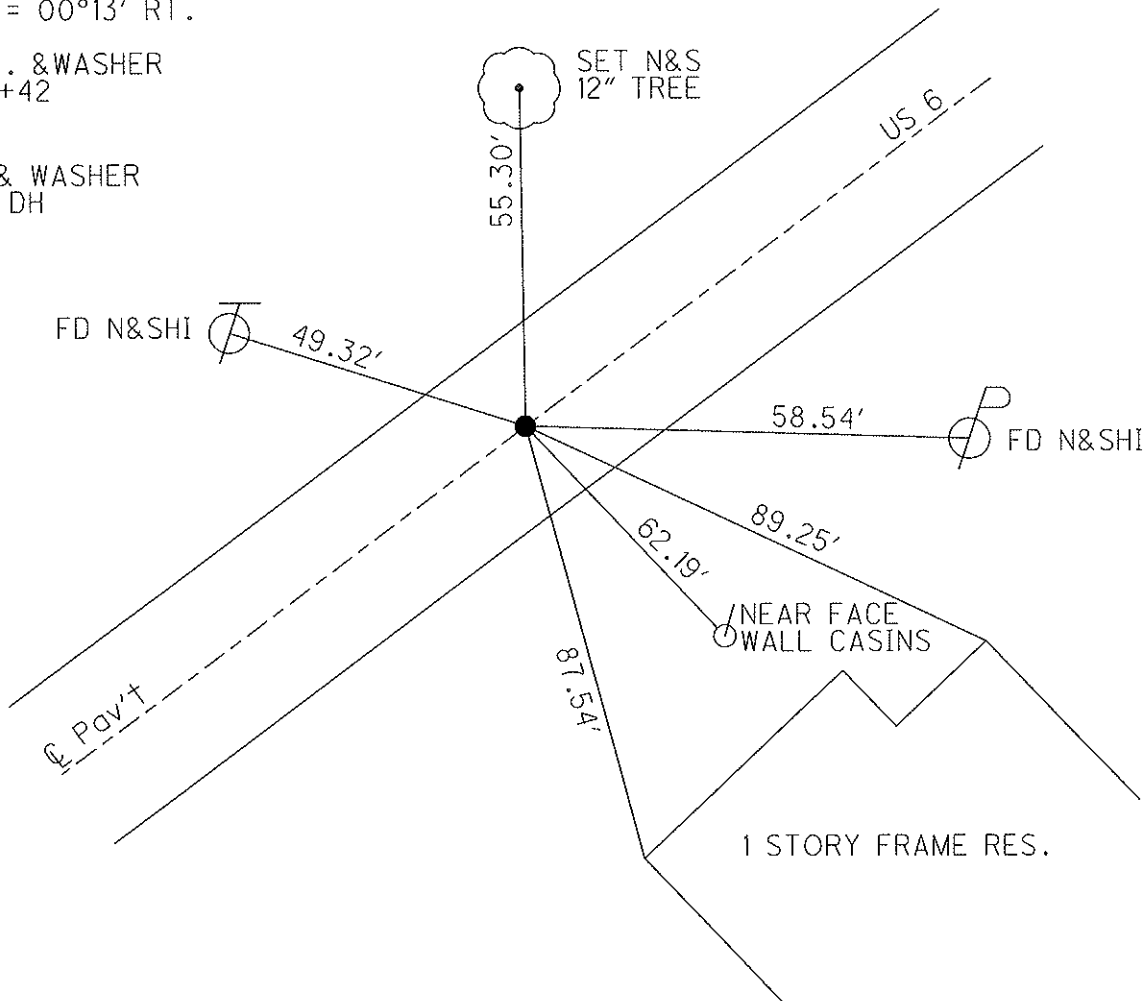


NOTE: 9/03/91
PREVIOUS MONUMENTS:
P.K. & WASHER
MINE SPIKE

P.I. 52+05
ON N-S 1/2 SEC. LINE
RECORD = 00°13' RT.

RESET P.K. & WASHER
STA. 1024+42
9/03/91

SET MAG & WASHER
10/29/09 DH



O.D.O.T. DISTRICT 2 SURVEY OFFICE

PERSONNEL _____

REFERENCE NO. 28-B

SHEET 2 OF 39

NOTES RIPPLE

H.C. BARBOUR

DATE 9-3-1991

ROUTE 6

R.C. GEYMAN

WEATHER _____

COUNTY SANDUSKY

TEMP. 90°

TOWNSHIP SANDUSKY

SECTION 25

T 5 N R 15 E

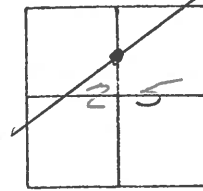
TYPE MONUMENT RE-SET PK/WASHER

ON SURFACE - ~~BELOW~~ YES

~~LEFT~~ C. PAV'T. - RIGHT 1.5'

TO _____ EDGE PAVEMENT

S.L.M. 1024+42



PREVIOUS MONUMENTS:

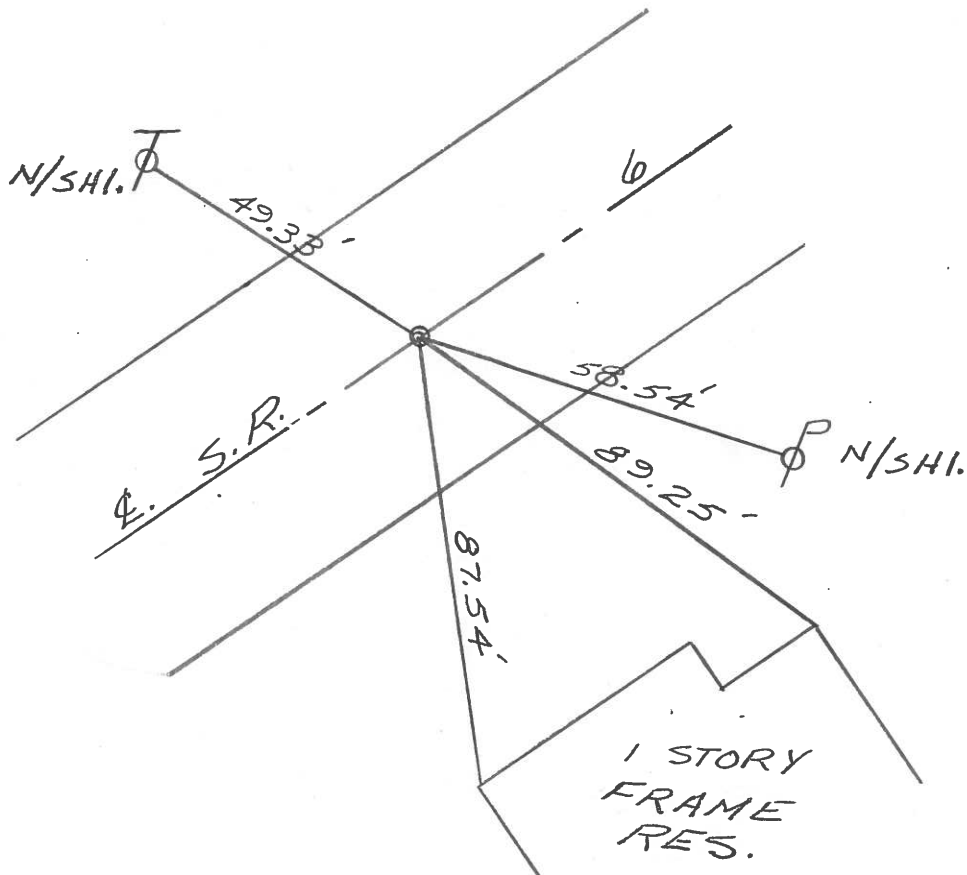
PK/WASHER

MINE SPK.

P.I. ON N-S 1/2 SEC. LINE

RECORD A = 00°13' RT.

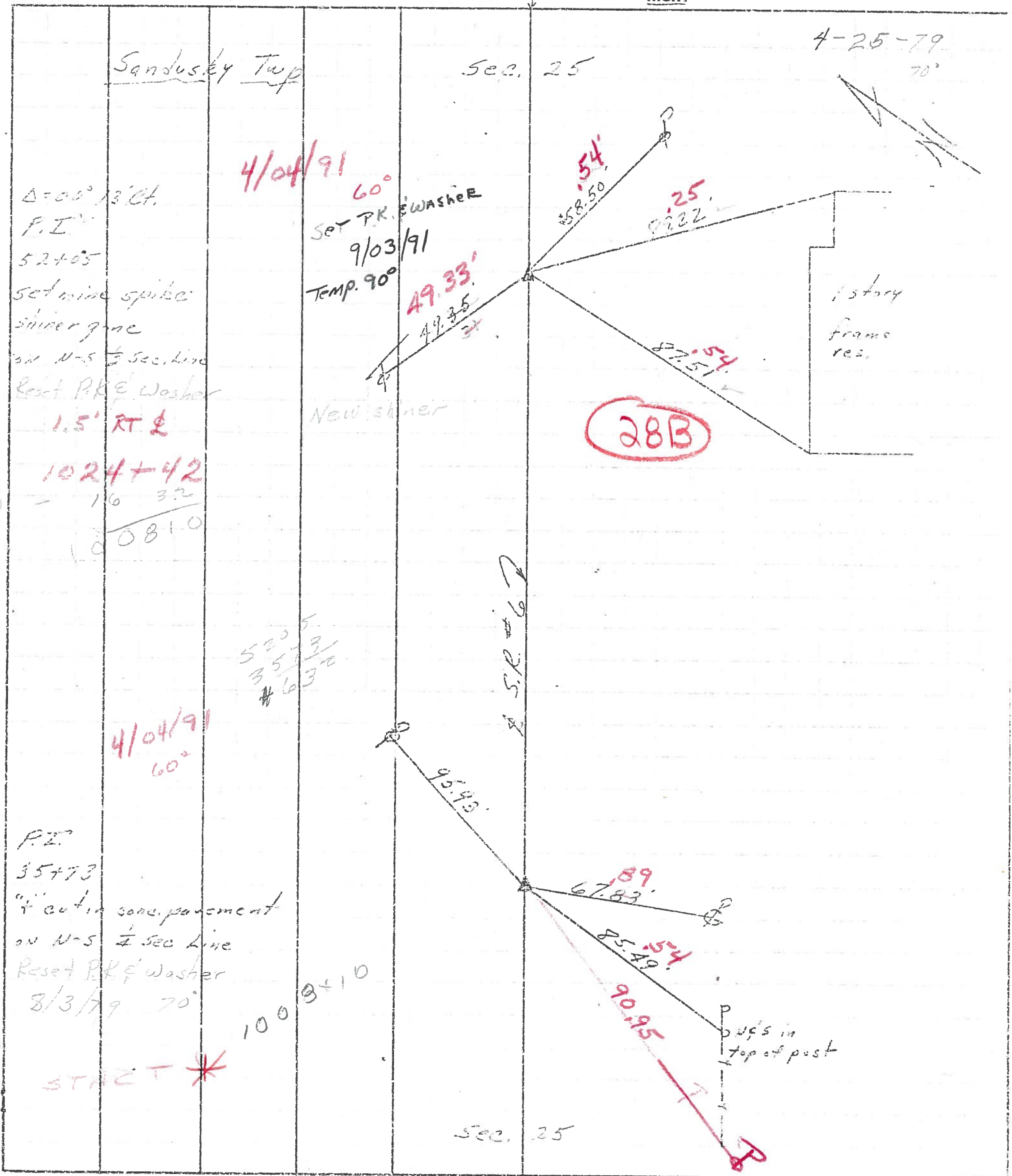
52+05



PERSONNEL TITLE PERSONNEL TITLE
 Craig Schneider
 Ash Parboor

COUNTY Sandusky DATE 7/9/75
 S. R. #6 WEATHER sunny
 SEC. "Y" - Fremont - East TEMP. 68°

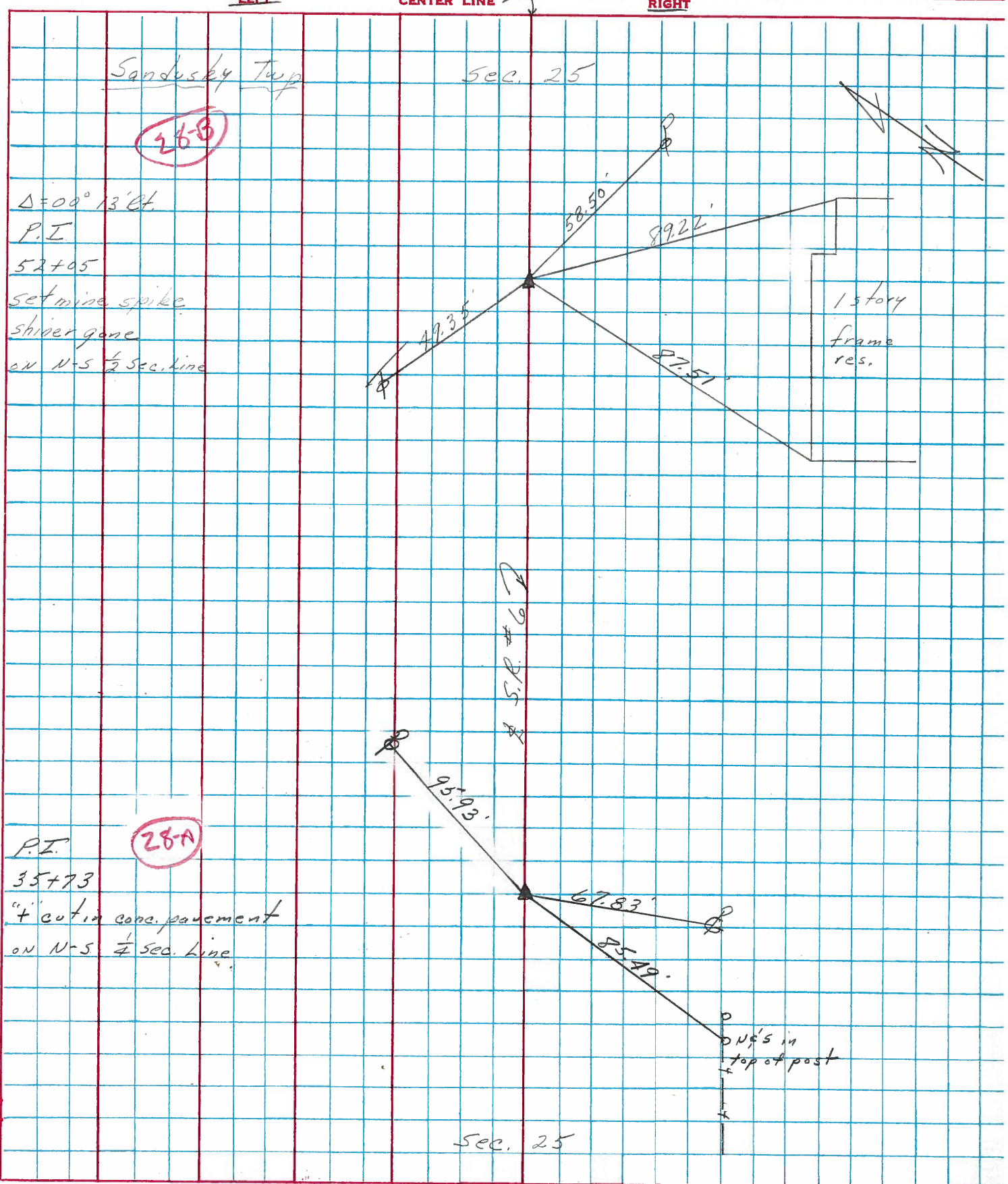
DESCRIPTION Ties for Control Points LEFT CENTER LINE RIGHT JOB NO.



PERSONNEL	TITLE	PERSONNEL	TITLE
Crogin		Schneider	
Ash		Barbour	
Geyman			

COUNTY Sandusky DATE 7/9/75
 S. R. #6 WEATHER sunny
 SEC. "Y" - Fremont - East TEMP. 68°

DESCRIPTION Ties for Control Points JOB NO. _____



PERSONNEL TITLE PERSONNEL TITLE

COUNTY Sandusky

DATE

S. R. U.S. #

WEATHER

SEC. V-I-R-H-I

TEMP.

DESCRIPTION From Fremont to G. line

JOB NO.

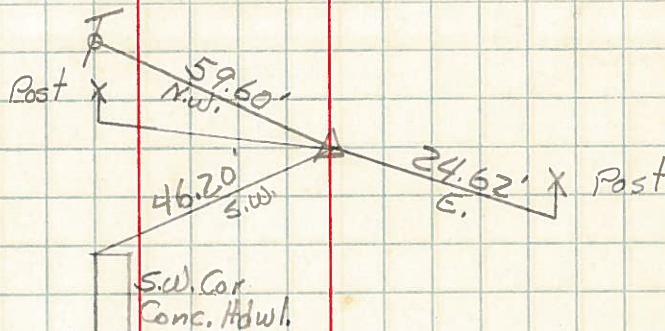
LEFT

CENTER LINE

RIGHT

Sta. 0+00
Set shiner

#110



Sta. 4+10.45

#111



Sta. 19+23.5

#112



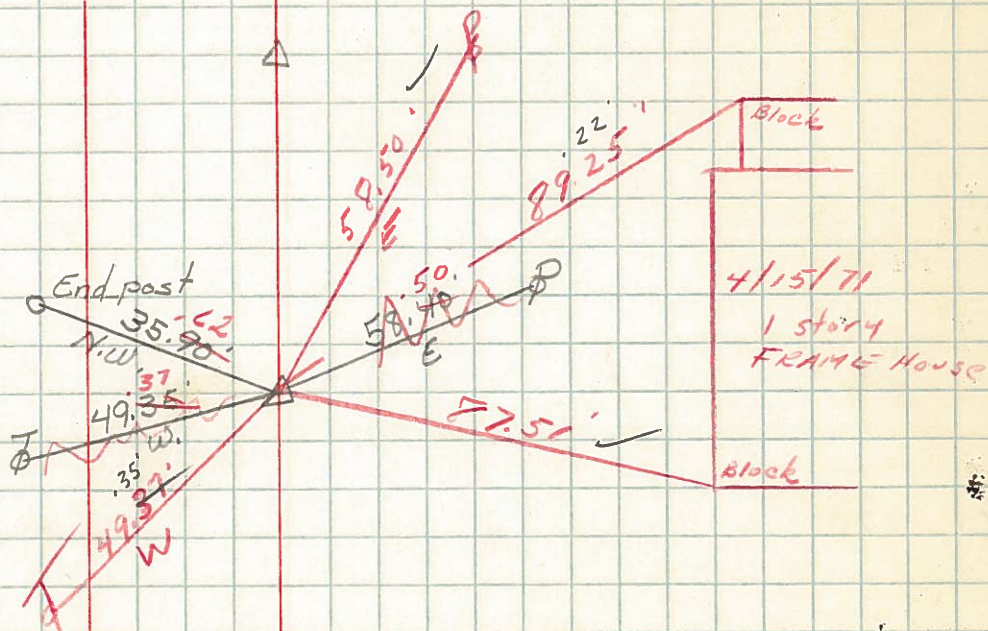
Sta. 35+73

#113



Sta. 52+05
Set shiner

#114



Sta. 84+68.1

#115

