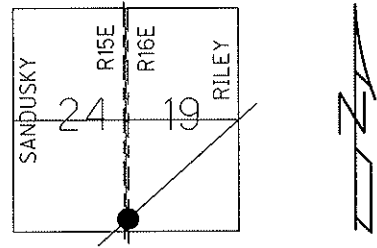


O.D.O.T. DISTRICT 2 SURVEY OFFICE

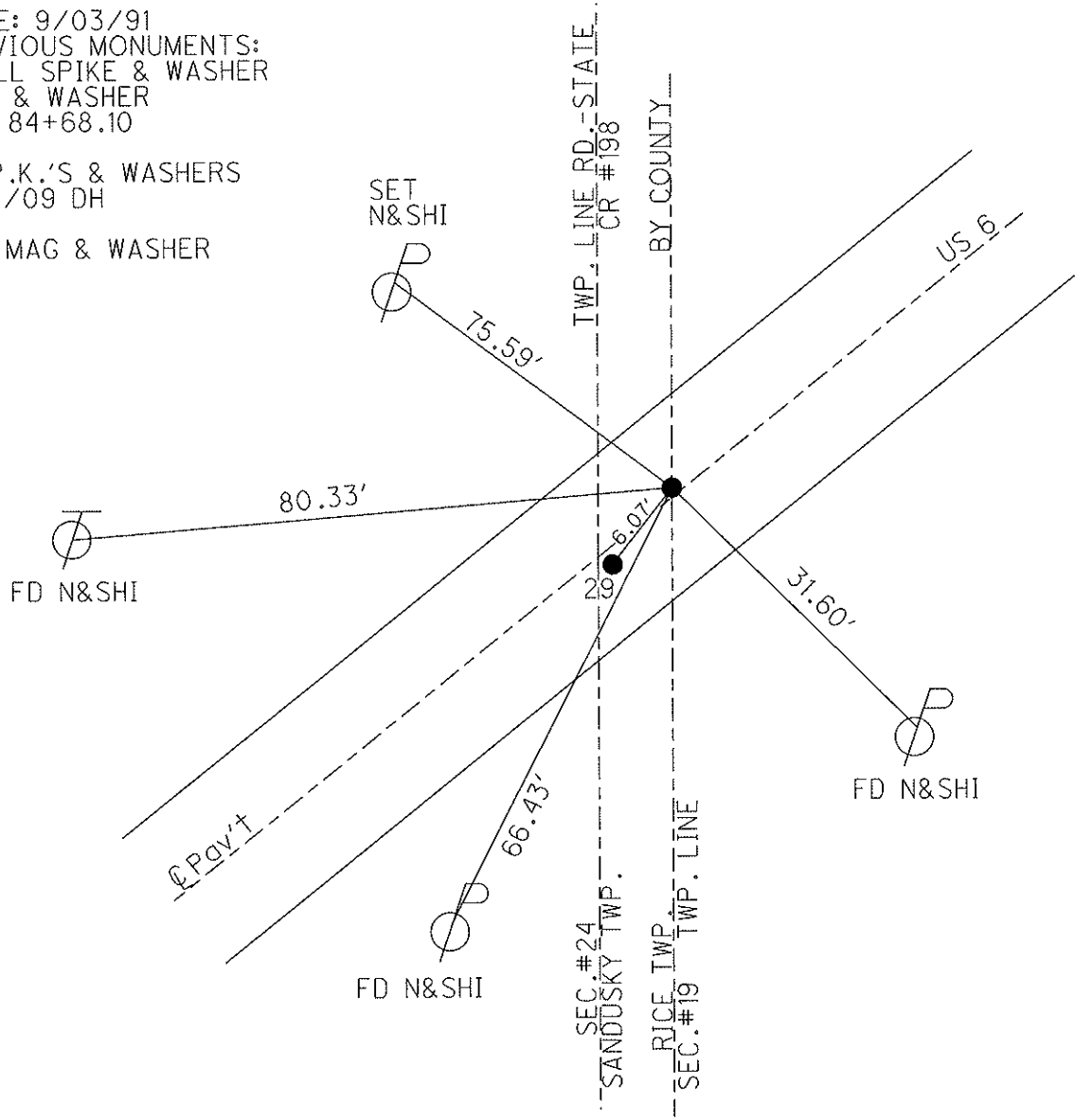
PERSONNEL	REFERENCE NO. <u>30</u>	SHEET <u>6</u> OF <u>17</u>
NOTES <u>HOMAN</u>	DATE <u>8/06/09</u>	ROUTE <u>US 6</u>
H.C. <u>HOMAN</u>	WEATHER <u>SUNNY</u>	COUNTY <u>SANDUSKY</u>
R.C. <u>ROUSOS</u>	TEMP. <u>75°</u>	TOWNSHIPS <u>SANDUSKY, RILEY</u>
		SECTION <u>24 & 19</u>
		T <u>5</u> N R <u>15&16</u> E

TYPE MONUMENT P.K. & WASHER
 ON SURFACE - ~~BELOW~~ ON
~~LEFT~~ - CL PAV'T - RIGHT A= 2.0' - STATE
TO EDGE PAVEMENT
 S.L.M. 1048+86.97
 GPS Northing: 622002.101 · Easting: 1812386.537



NOTE: 9/03/91
 PREVIOUS MONUMENTS:
 SMALL SPIKE & WASHER
 P.K. & WASHER
 P.I. 84+68.10

FD P.K.'S & WASHERS
 6/10/09 DH
 SET MAG & WASHER



O.D.O.T. DISTRICT 2 SURVEY OFFICE

PERSONNEL

REFERENCE NO. 30

SHEET 3 OF 39

NOTES RIPPLE

H.C. BARROW

R.C. GEYMAN

DATE 9-3-1991

WEATHER _____

TEMP. 90°

ROUTE SR#6

COUNTY SANDUSKY

TOWNSHIP SANDUSKY-RILEY

SECTION 24 & 19

T. 5 N R. 15 & 16 E

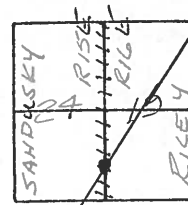
TYPE MONUMENT PK/WASHER

ON SURFACE - BELOW yes

LEFT- & PAV'T. - RIGHT 2.0' - STATE

- TO - EDGE PAVEMENT

S.L.M. 1057+21

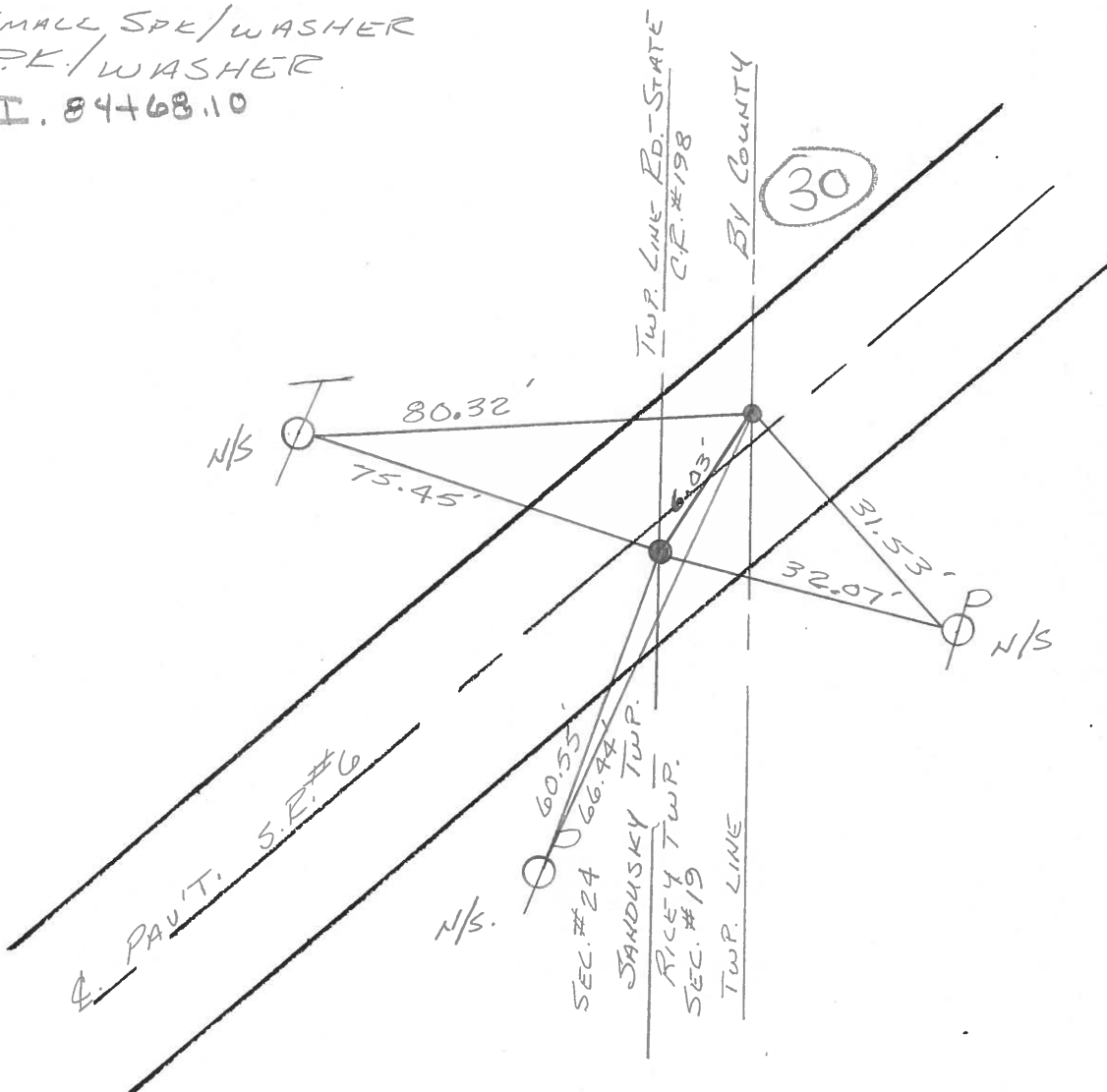


PREVIOUS MONUMENTS:

SMALL SPK/WASHER

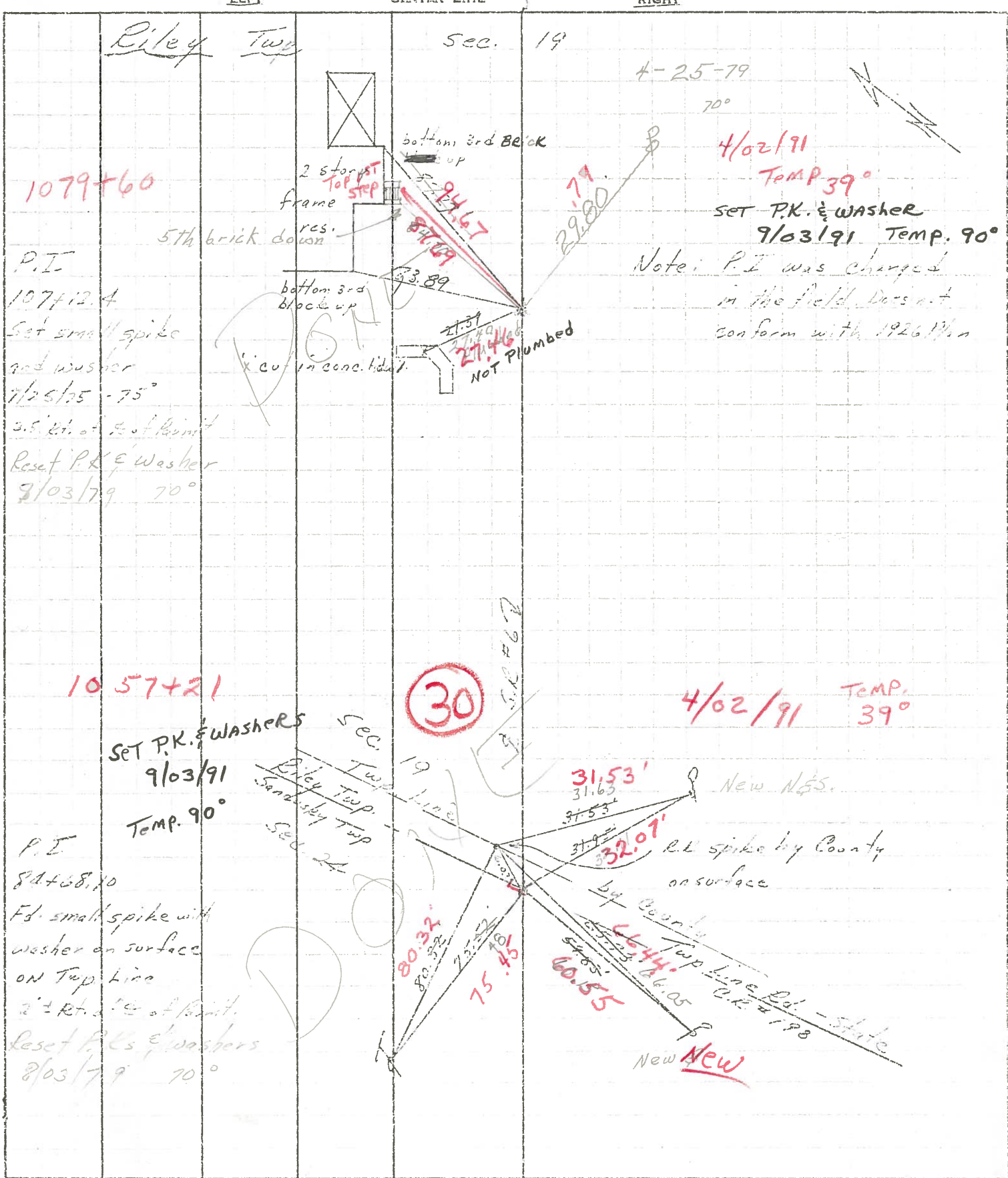
PK/WASHER

P.I. 84+68.10



PERSONNEL	TITLE	PERSONNEL	TITLE	COUNTY	DATE	S. R.	WEATHER	TEMP.
Crossin		Schneider		Sandusky	7/9/75	# 6	sunny	70°
Ash		Barbour						
Seyman								

DESCRIPTION Ties for Control Points JOB NO. _____



PERSONNEL TITLE PERSONNEL TITLE

Cranin

Schneider

COUNTY Sandusky

DATE 7/9/75

Ash

Barbour

S. R. # 6

WEATHER sunny

Geyman

SEC. "4" - Fremont - East

TEMP. 70°

DESCRIPTION

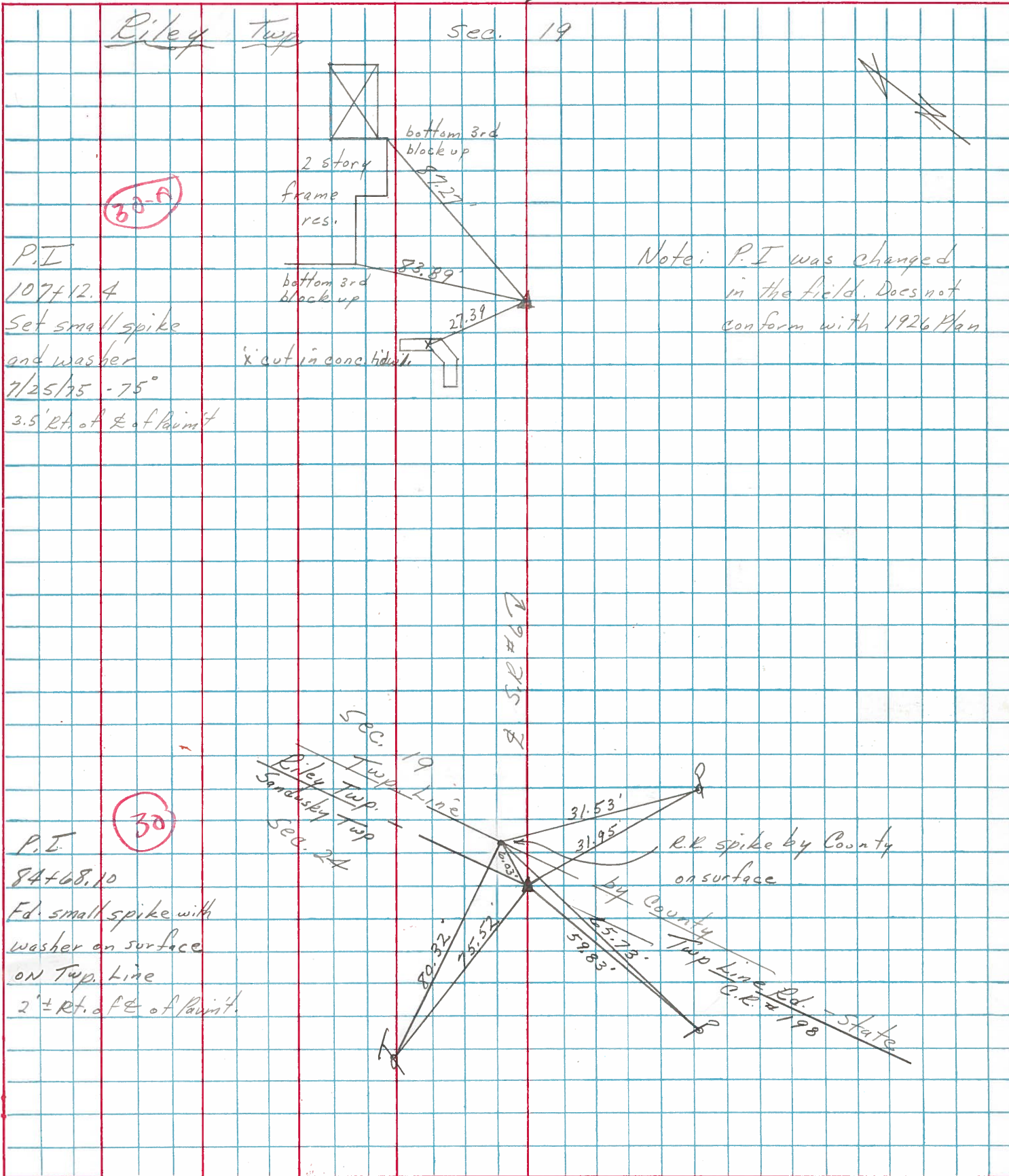
Ties for Control Points

JOB NO.

LEFT

CENTER LINE

RIGHT



30-A

P.I.
 107+12.4
 Set small spike
 and washer
 7/25/75 - 75°
 3.5' Rt. of E of Point

Note: P.I. was changed
 in the field. Does not
 conform with 1926 Plan

30

P.I.
 84+68.10
 Fd. small spike with
 washer on surface
 on Twp. Line
 2' ± Rt. of E of Point.

Sec. 19
 Riley Twp.
 Sandusky Twp.
 Sec. 24

S.R. # 6

R.R. spike by County on surface

County Twp Line
 R.R. # 198
 Ed. - State

PERSONNEL	TITLE	PERSONNEL	TITLE	COUNTY	DATE
<u>Schneider</u>		<u>Potts</u>		<u>Sandusky</u>	<u>Dec-12-67</u>
<u>Mosser</u>				S. R. <u>U.S. # 6</u>	WEATHER
<u>Barbour</u>				SEC. <u>Fremont E.</u>	TEMP.
<u>Redding</u>					
DESCRIPTION	<u>Ties for Control Points</u>				JOB NO.
	LEFT	CENTER LINE	RIGHT		

