

O.D.O.T. DISTRICT 2 SURVEY OFFICE

PERSONNEL \_\_\_\_\_

REFERENCE NO. 30-A

SHEET 7 OF 17

NOTES HOMAN

DATE 8/06/09

ROUTE US 6

H.C. HOMAN

WEATHER SUNNY

COUNTY SANDUSKY

R.C. ROUSOS

TEMP. 80°

TOWNSHIP RILEY

SECTION 19

T 5 N R 16 E

TYPE MONUMENT P.K. & WASHER

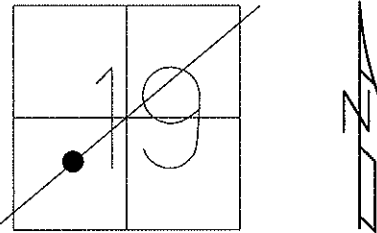
~~ON SURFACE~~ - BELOW 3"

~~LEFT - C PAV'T~~ - RIGHT 3.5'

TO EDGE PAVEMENT

S.L.M. 1071+25.60

GPS Northing: 623321.623 Easting: 1814194.937

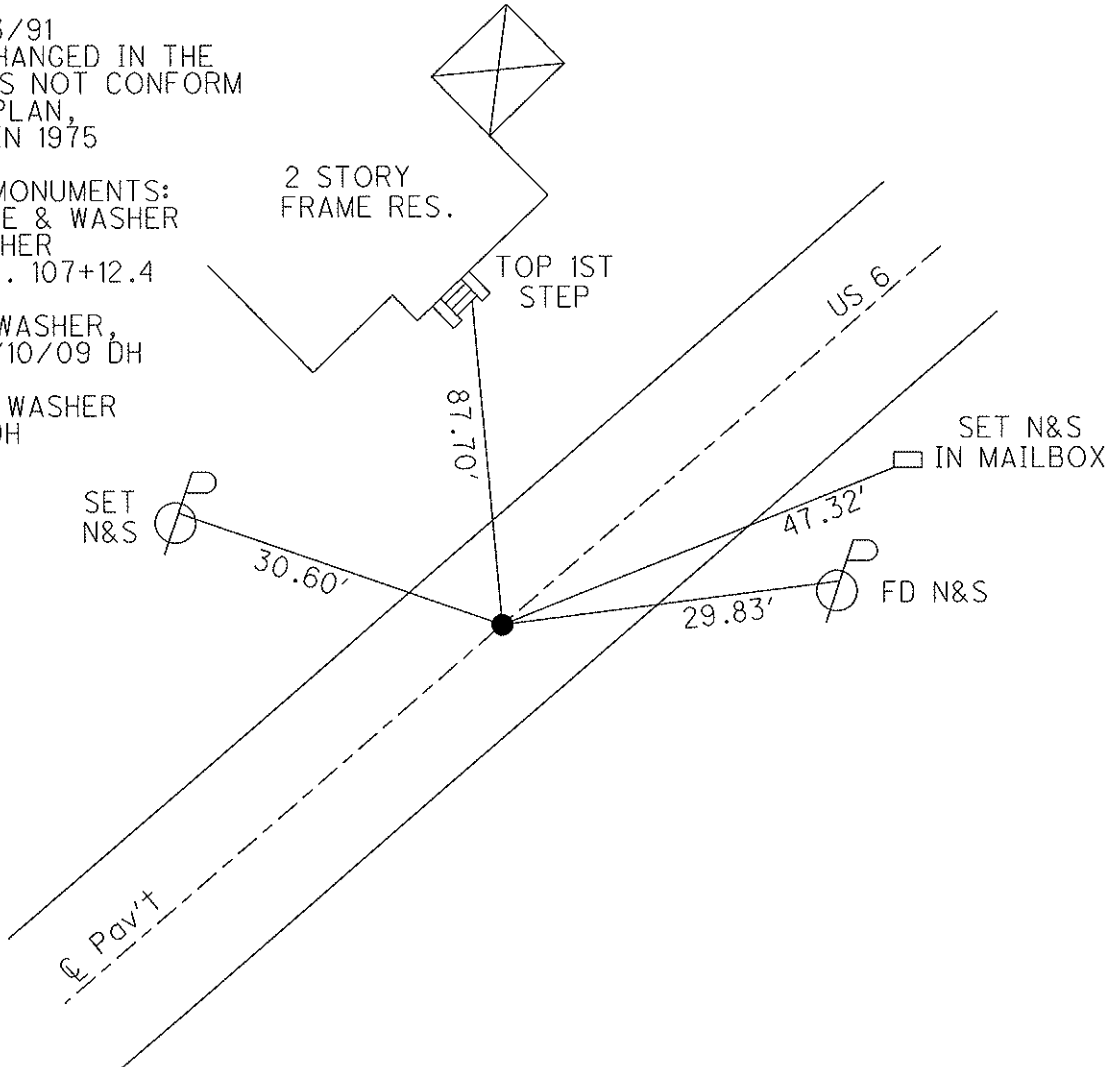


NOTE: 9/03/91  
P.I. WAS CHANGED IN THE  
FIELD. DOES NOT CONFORM  
WITH 1926 PLAN,  
JACK CRONIN 1975

PREVIOUS MONUMENTS:  
SMALL SPIKE & WASHER  
P.K. & WASHER  
RECORD P.I. 107+12.4

FD P.K. & WASHER,  
3" DOWN 6/10/09 DH

SET MAG & WASHER  
10/29/09 DH



# O.D.O.T. DISTRICT 2 SURVEY OFFICE

PERSONNEL

REFERENCE NO. 30-A

SHEET 4 OF 39

NOTES RIPPLE

H.C. BARBOUR

R.C. GEYMAN

DATE 9-3-1991

WEATHER \_\_\_\_\_

TEMP. 90°

ROUTE SR#6

COUNTY SANDUSKY

TOWNSHIP RILEY

SECTION \_\_\_\_\_

T.5 N R.16 E

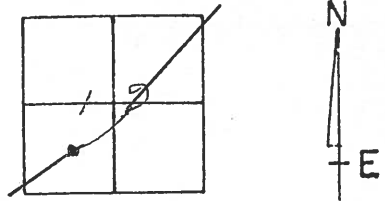
TYPE MONUMENT PK/WASHER

ON SURFACE - BELOW yes

LEFT - C PAV'T. - RIGHT 3.5'

TO EDGE PAVEMENT

S.L.M. 1079+60



PREVIOUS MONUMENTS:  
SMALL SPK./WASHER  
P.K./WASHER

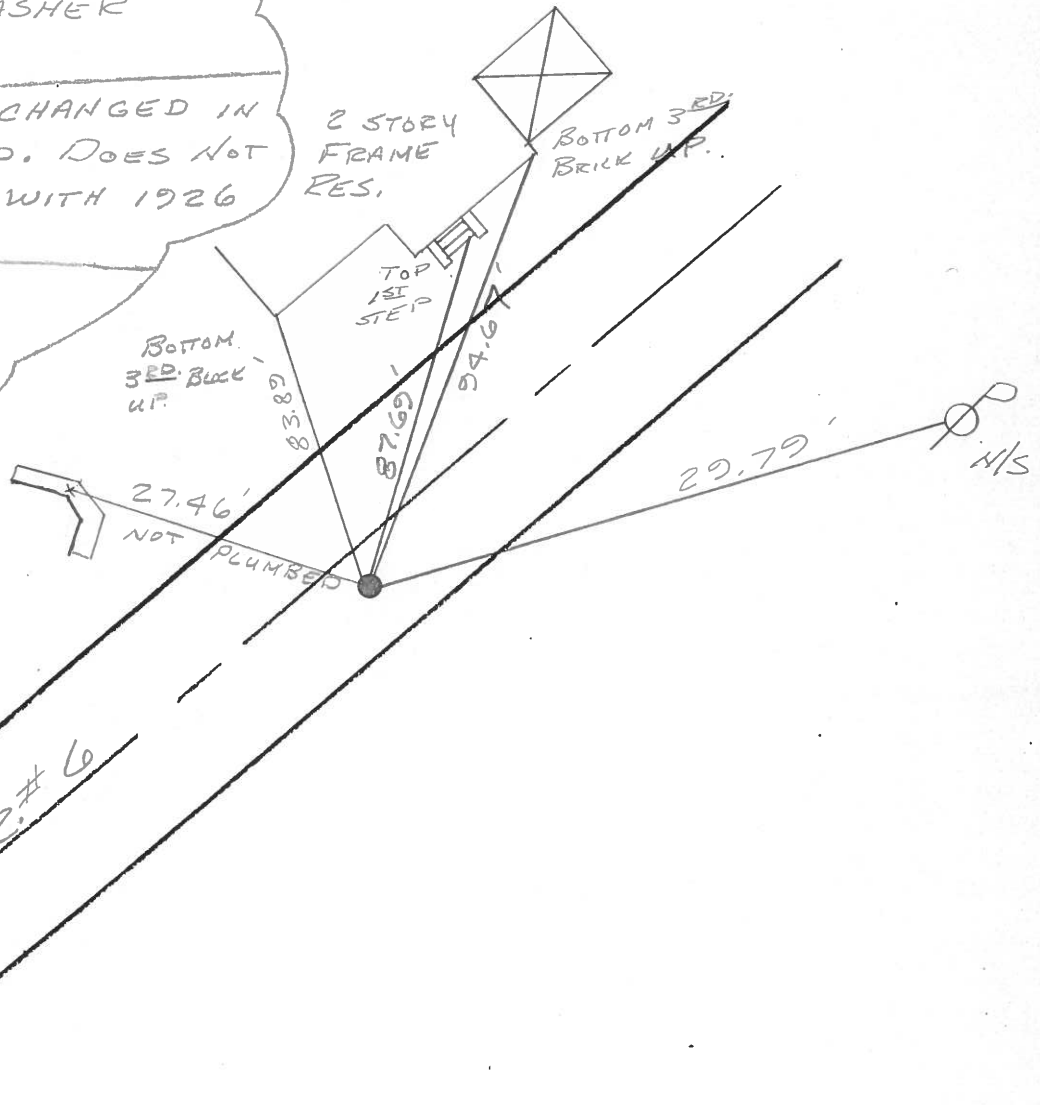
NOTE: P.I. WAS CHANGED IN THE FIELD. DOES NOT CONFORM WITH 1926 PLAN.

NAK. ORIGINAL 1975

Record: P.H. 107+12.4

4" CUT CONC. HDWL.

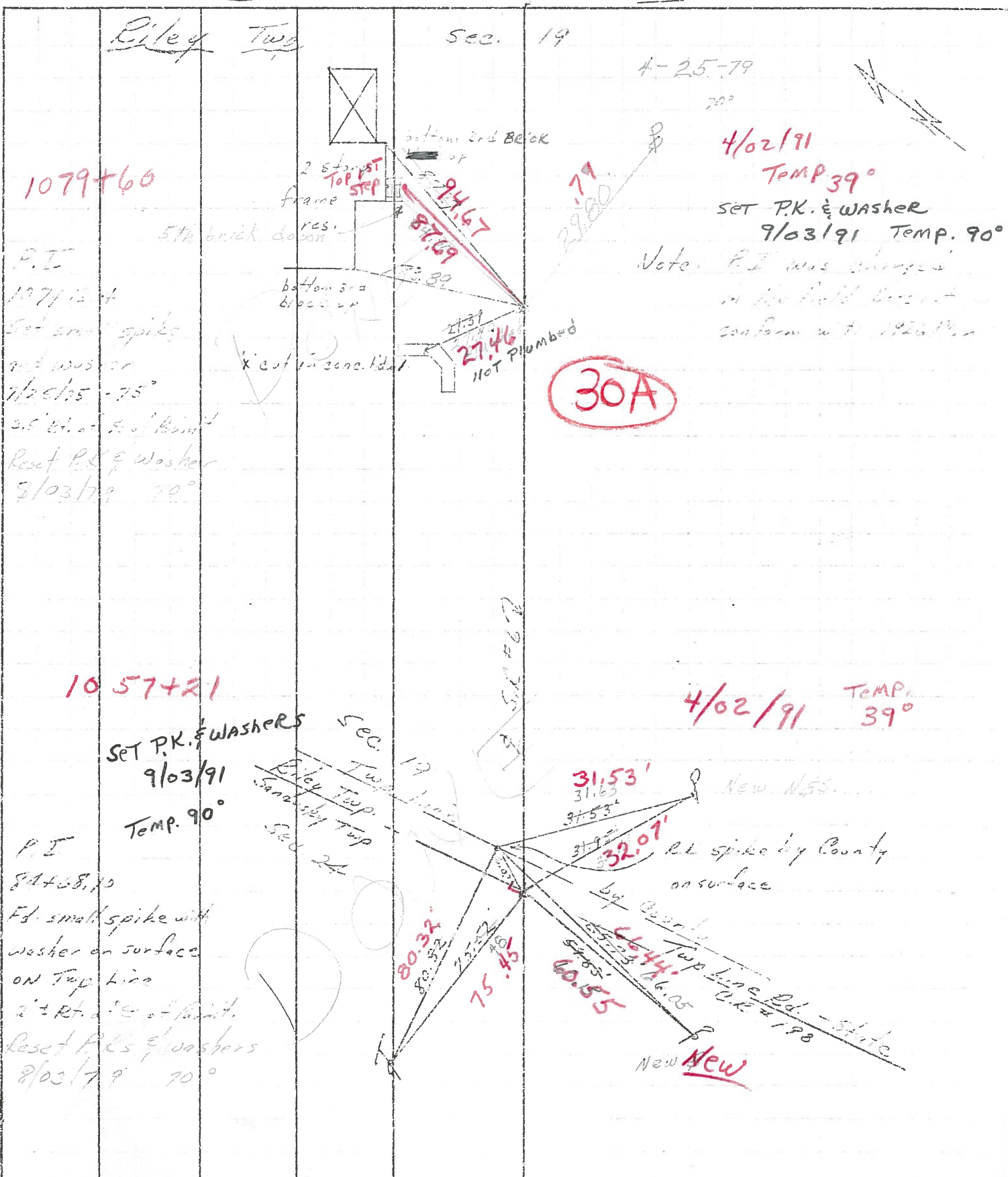
C. PAV'T. SR#6



CHANNEL TITLE PERSONNEL TITLE  
 Schneider  
 Barbour

COUNTY Sandusky DATE 7/9/75  
 S. R. # 6 WEATHER sunny  
 SEC. "4" - Fremont - East TEMP. 70°

DESCRIPTION Ties for Control Points LEFT CENTER LINE RIGHT JOB NO.



1079+60  
 P.I.  
 12/7/12  
 Set small spikes  
 and washer  
 7/26/75 - 75°  
 2.5' etc. S. of Point  
 Reset P.K. & Washer  
 3/03/79 90°

1057+21  
 SET P.K. & WASHERS  
 9/03/91  
 TEMP. 90°  
 P.I.  
 8/4/78, 70  
 Fd. small spike with  
 washer on surface  
 ON Top Line  
 2' ± R.L. S. of Point  
 Reset P.K. & Washers  
 8/03/79 90°

4-25-79  
 70°  
 4/02/91  
 TEMP 39°  
 SET P.K. & WASHER  
 9/03/91 TEMP. 90°  
 Note: P.I. was changed  
 in the field does not  
 conform with 1926 Plan

30A

4/02/91 TEMP. 39°

31.53'  
 31.63  
 31.53'  
 31.9'  
 32.07'  
 New N.S.S.  
 R.L. spike by County  
 on surface  
 by County  
 66.44'  
 60.55'  
 New New

PERSONNEL TITLE PERSONNEL TITLE

Cranin

Schneider

COUNTY Sandusky

DATE 7/9/75

Ash

Barbour

S. R. # 6

WEATHER sunny

Geyman

SEC. "4" - Fremont - East

TEMP. 70°

DESCRIPTION Ties for Control Points

JOB NO.

LEFT

CENTER LINE

RIGHT

