

O.D.O.T. DISTRICT 2 SURVEY OFFICE

PERSONNEL

REFERENCE NO. 30-C

SHEET 9 OF 17

NOTES HOMAN

DATE 8/18/09

ROUTE US 6

H.C. HOMAN

WEATHER CLOUDY

COUNTY SANDUSKY

R.C. ROUSOS

TEMP. 75°

TOWNSHIP RILEY

SECTION 19 & 20

T 5 N R 16 E

TYPE MONUMENT P.K. & WASHER

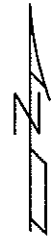
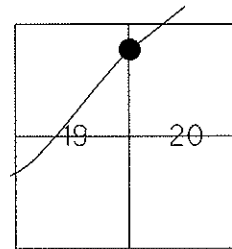
ON SURFACE - ~~BELOW~~ ON

~~LEFT~~ - Q PAV'T - RIGHT 2'

TO EDGE PAVEMENT

S.L.M. 1123+67.22

GPS Northing: 626496.265 Easting: 1818365.650

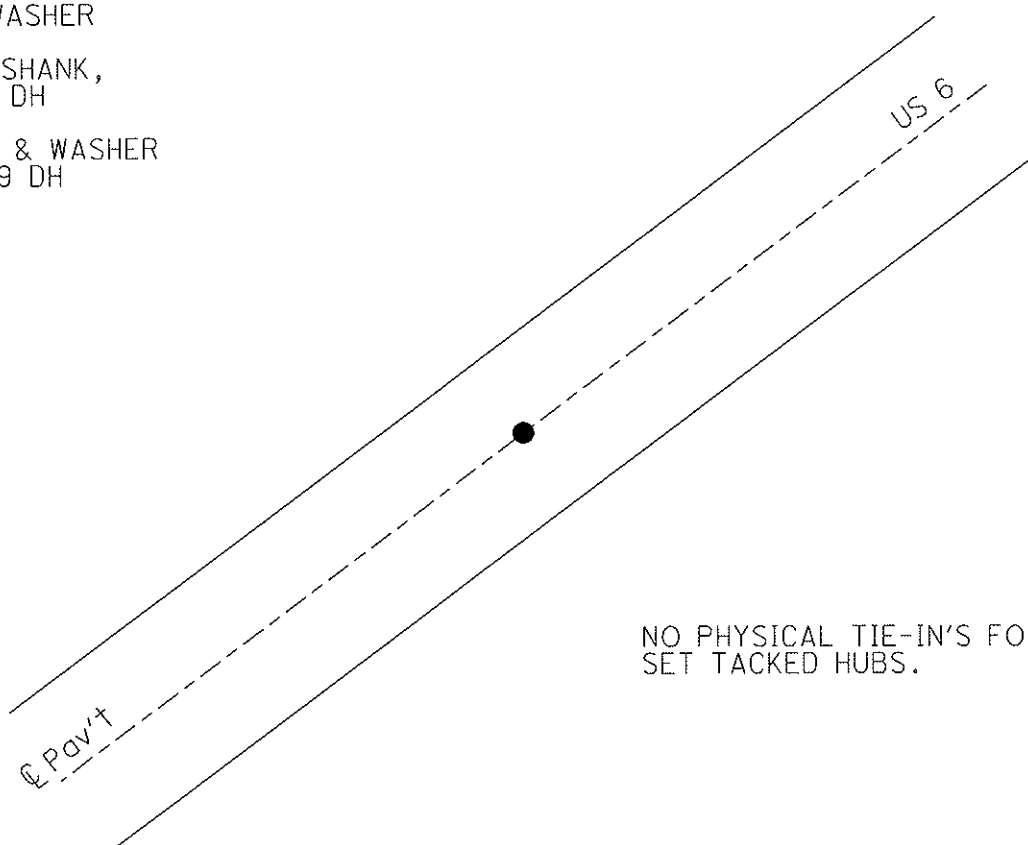


NOTE: 9/03/91  
OLD PI STA.159+54.15

PREVIOUS MONUMENTS:  
SMALL MINE SPIKE  
P.K. & WASHER

FD P.K. SHANK,  
6/10/08 DH

SET MAG & WASHER  
10/29/09 DH



NO PHYSICAL TIE-IN'S FOUND.  
SET TACKED HUBS.

# O.D.O.T. DISTRICT 2 SURVEY OFFICE

PERSONNEL \_\_\_\_\_

REFERENCE NO. 30-C

SHEET 6 OF 39

NOTES RIPPLE

H.C. BARBOUR

DATE 9-3-1991

ROUTE 6

R.C. GEYMAN

WEATHER \_\_\_\_\_

COUNTY SAHDUSKY

\_\_\_\_\_

TEMP. \_\_\_\_\_

TOWNSHIP RILEY

\_\_\_\_\_

SECTION 19 & 20

T 5 N R 16 E

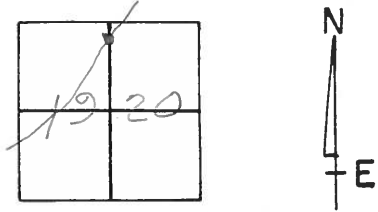
TYPE MONUMENT PK / WASHER

ON SURFACE - ~~BELOW~~ yes

~~LEFT - &~~ PAV'T. - RIGHT 2'

\_\_\_\_\_ TO \_\_\_\_\_ EDGE PAVEMENT

S.L.M. 1131+98

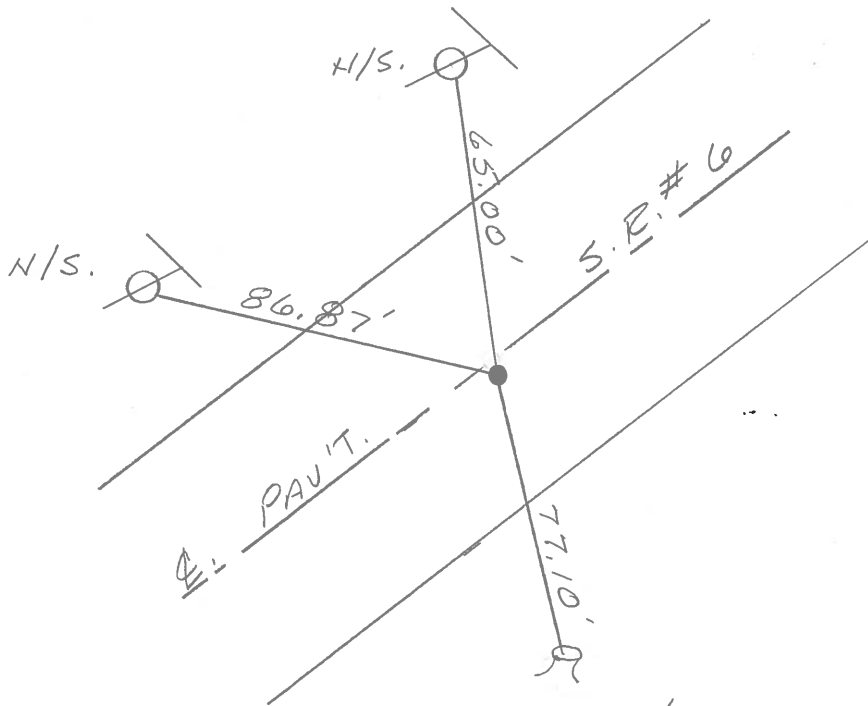


PREVIOUS MONUMENTS:

OLD P.I. STA. 159+54.15

P.K./WASHER

SMALL MINE SPIKE

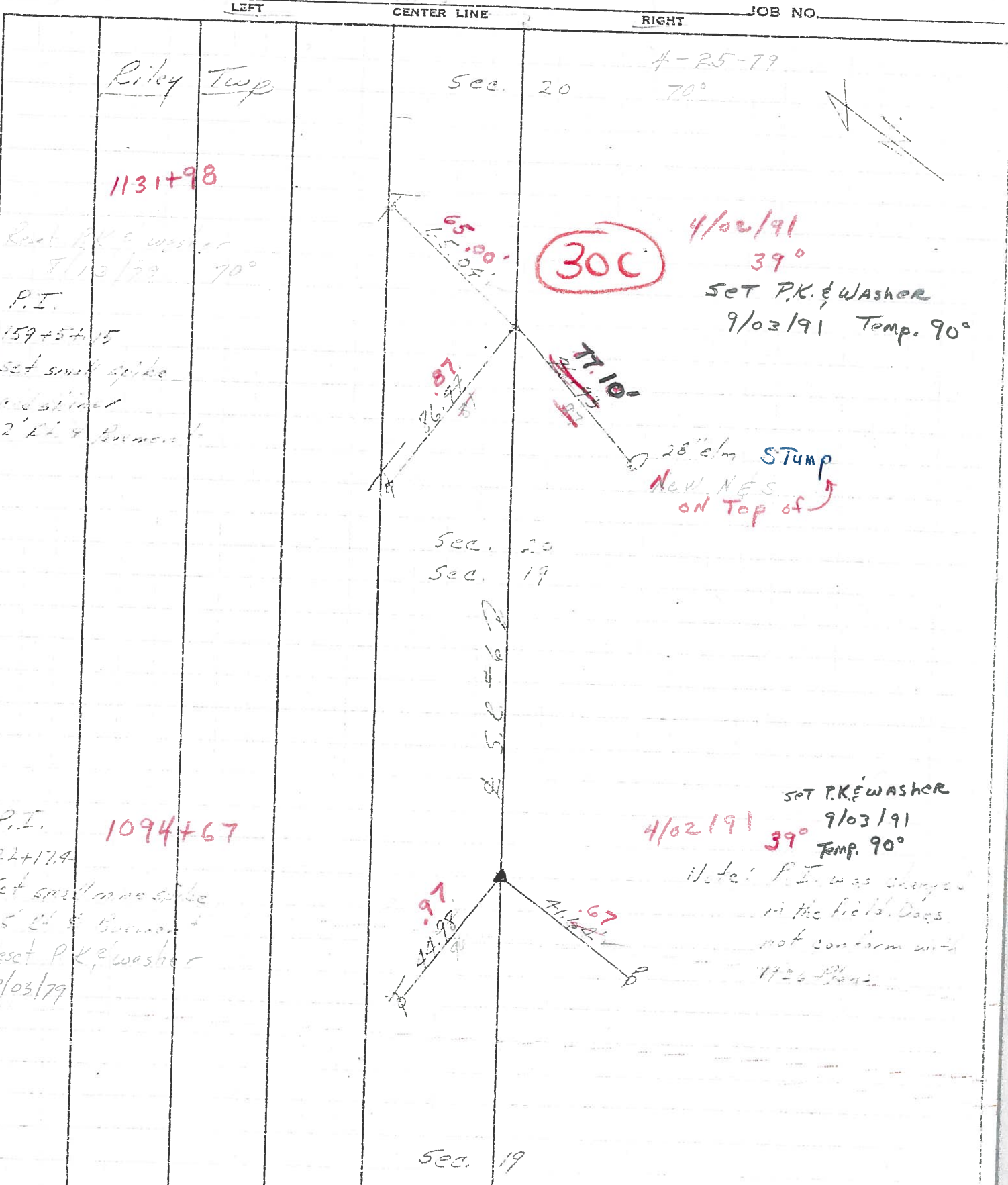


N/S. ON TOP OF  
28" ELM STUMP

PERSONNEL	TITLE	PERSONNEL	TITLE
Crosby		Schneider	
Crosby		Messer	
		Korhonen	

COUNTY Sandusky DATE 7/28/75  
 S. R. #6 WEATHER sunny  
 SEC. 4 - Front - East TEMP. 80°

DESCRIPTION Ties for Control Points



PERSONNEL	TITLE	PERSONNEL	TITLE
Cronin		Schneider	
Geyman		Mosser	
		Barbour	

COUNTY Sandusky DATE 7/28/75

S. R. #6 WEATHER sunny

SEC. "4" - Fremont - East TEMP. 80°

DESCRIPTION Ties for Control Points

JOB NO.

LEFT

CENTER LINE

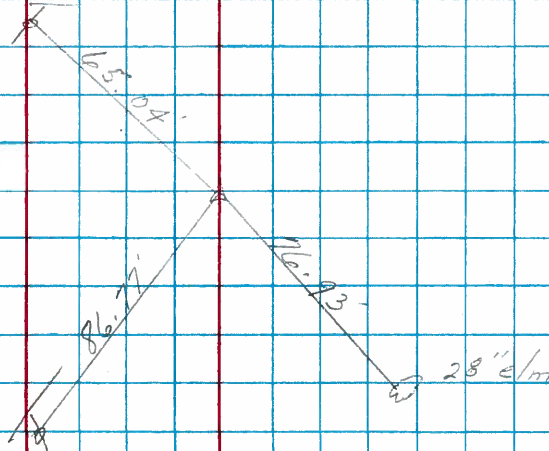
RIGHT

Riley Twp

Sec. 20

30-6

P.I.  
 159+54.15  
 set small spike  
 and shiner  
 2' Rt. & Pavement

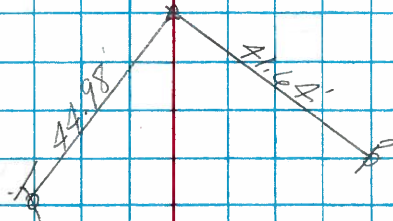


Sec. 20  
Sec. 19

S. R. #6

30-8

P.I.  
 122+17.4  
 Set small mine spike  
 2.5' Rt. & Pavement



Note: P.I. was changed  
 in the field. Does  
 not conform with  
 1926 Plans

Sec. 19