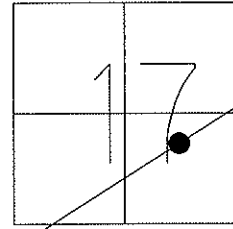


O.D.O.T. DISTRICT 2 SURVEY OFFICE

PERSONNEL	REFERENCE NO. <u>32A</u>	SHEET <u>12</u> OF <u>17</u>
NOTES <u>HOMAN</u>	DATE <u>8/18/09</u>	ROUTE <u>US 6</u>
H.C. <u>HOMAN</u>	WEATHER <u>CLOUDY</u>	COUNTY <u>SANDUSKY</u>
R.C. <u>ROUSOS</u>	TEMP. <u>75°</u>	TOWNSHIP <u>RILEY</u>
		SECTION <u>17</u>
		T <u>5</u> N R <u>16</u> E

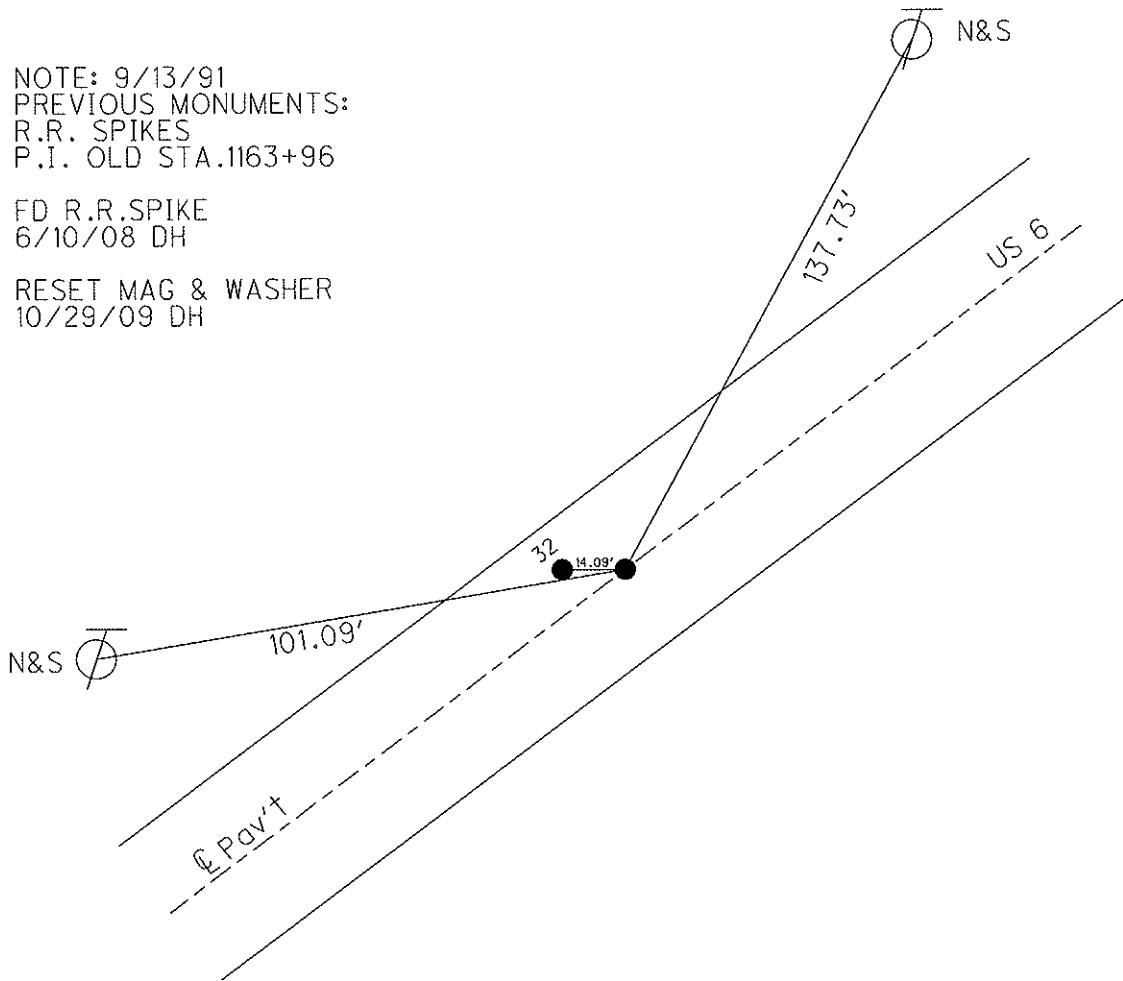
TYPE MONUMENT P.K. & WASHER
 ON SURFACE - ~~BELOW~~ ON
~~LEFT - C PAV'T - RIGHT~~
TO EDGE PAVEMENT
 S.L.M. 1155+75.39
 GPS Northing: 628397.241 Easting: 1820950.124



NOTE: 9/13/91
 PREVIOUS MONUMENTS:
 R.R. SPIKES
 P.I. OLD STA. 1163+96

 FD R.R. SPIKE
 6/10/08 DH

 RESET MAG & WASHER
 10/29/09 DH



O.D.O.T. DISTRICT 2 SURVEY OFFICE

PERSONNEL _____

REFERENCE NO. _____

SHEET 8 OF 39

NOTES CHENEY

H.C. BARBOUR

R.C. GEYMAN

DATE 9-13-1991

WEATHER SUNNY

TEMP. 70°

ROUTE 6

COUNTY SANDUSKY

TOWNSHIP RILEY

SECTION 17

T5 N R 16 E

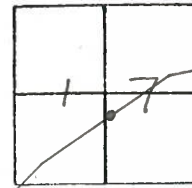
TYPE MONUMENT P.K/WASHER

ON SURFACE - BELOW

~~LEFT~~ - C PAV'T. - RIGHT 1.5'

TO EDGE PAVEMENT

S.L.M. 1163+96

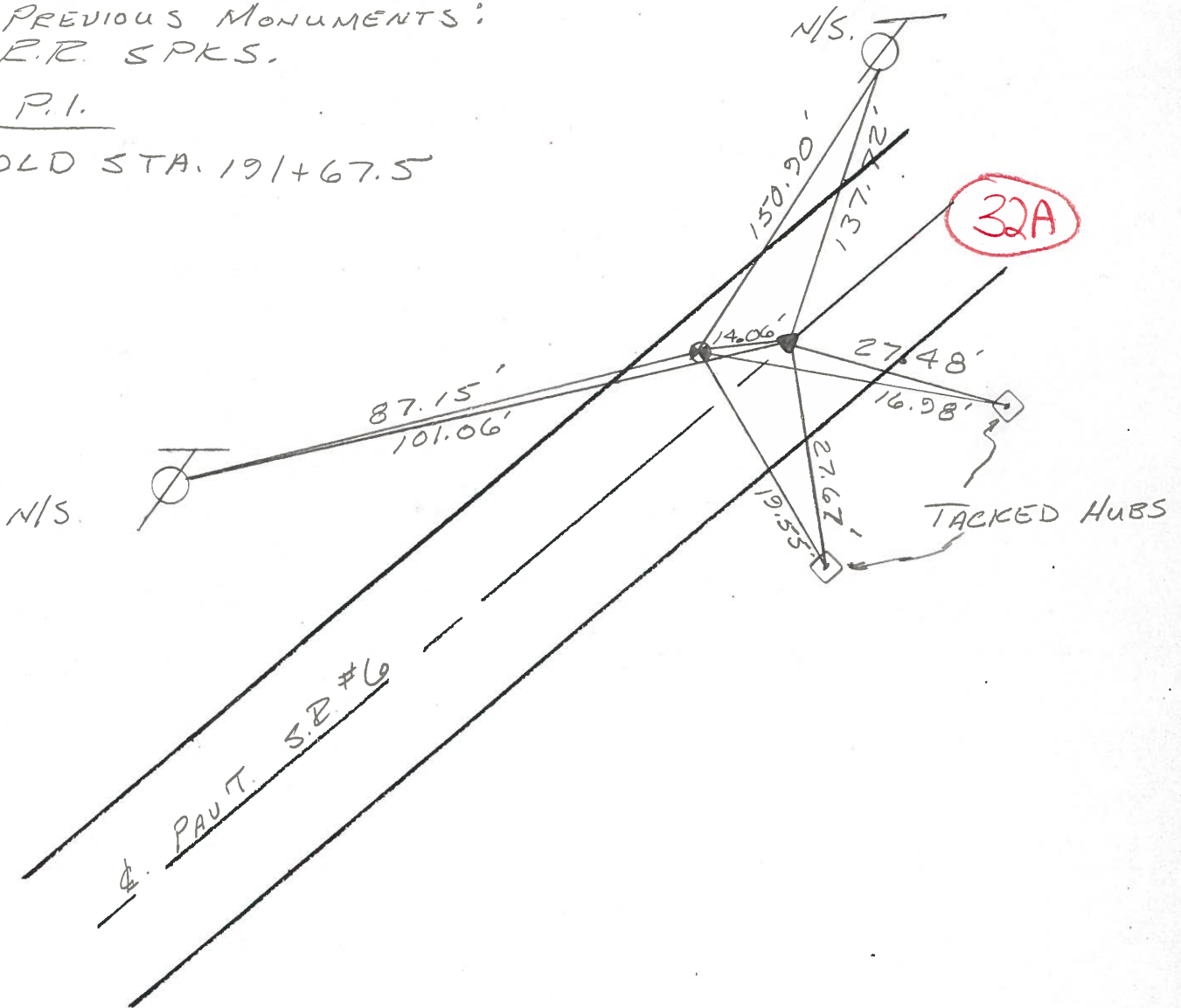


PREVIOUS MONUMENTS:

P.R. SPKS.

P.I.

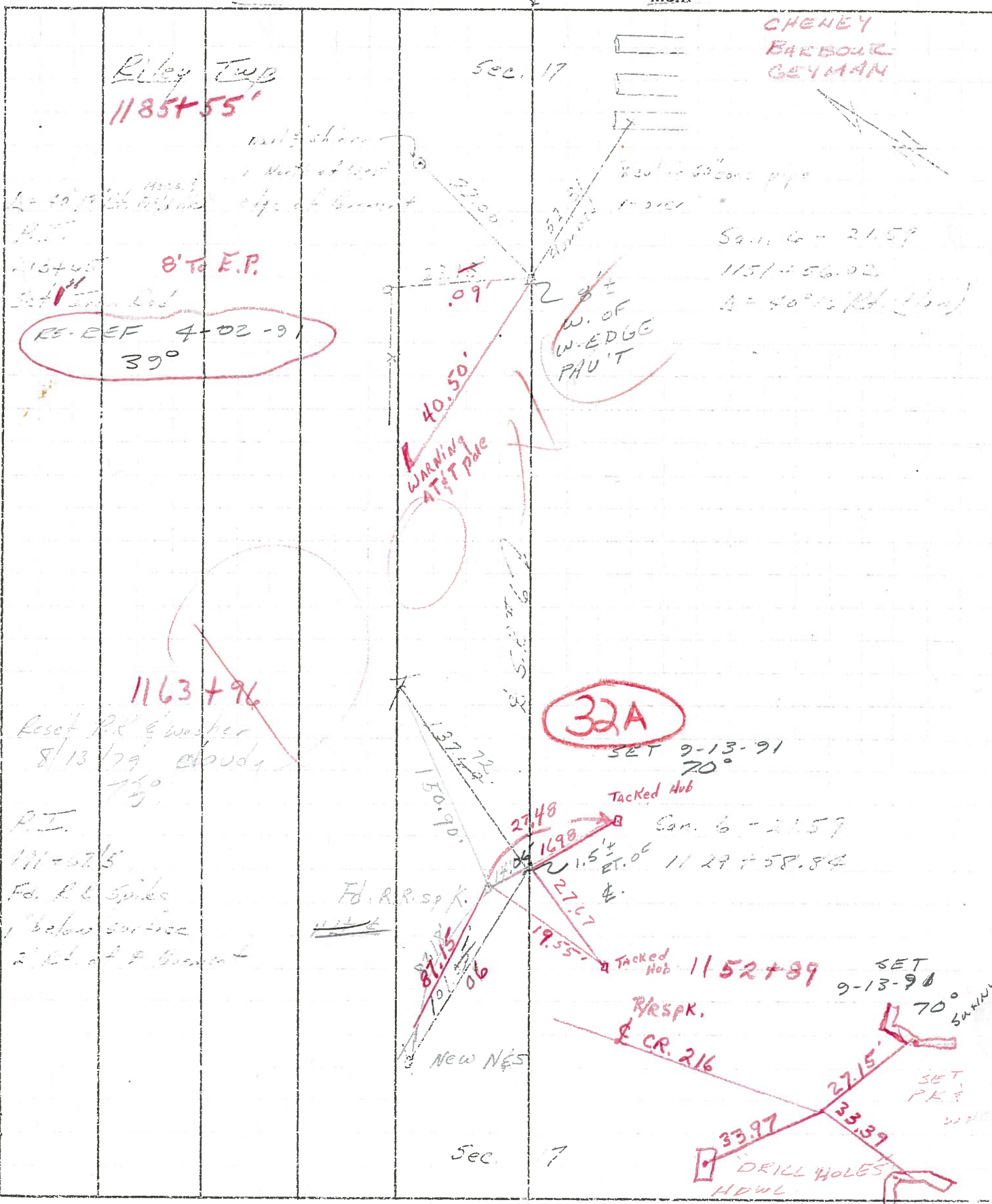
OLD STA. 191+67.5



PERSONNEL TITLE PERSONNEL TITLE
 Gearing Schneider
 Gearing Hesser
 Gearing Barbour

COUNTY Sandusky DATE 11/28/95
 S. R. # 6 WEATHER sunny
 SEC. 4 - Front East TEMP. 52°

DESCRIPTION Ties for Central Bridge LEFT CENTER LINE RIGHT JOB NO.



PERSONNEL	TITLE	PERSONNEL	TITLE	COUNTY	Sandusky	DATE	7/28/75
Cronin		Schneider		S. R.	# 6	WEATHER	Sunny
Geyman		Mosser		SEC.	"4" - Fremont - East	TEMP.	82°
		Barbour					

DESCRIPTION Ties for Control Points JOB NO. _____

