

O.D.O.T. DISTRICT 2 SURVEY OFFICE

PERSONNEL \_\_\_\_\_

REFERENCE NO. 33

SHEET 13 OF 17

NOTES HOMAN

DATE 8/18/09

ROUTE US 6

H.C. HOMAN

WEATHER CLOUDY

COUNTY SANDUSKY

R.C. ROUSOS

TEMP. 75°

TOWNSHIP RILEY

SECTION 17

T 5 N R 16 E

TYPE MONUMENT 1" IRON ROD

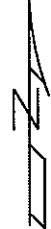
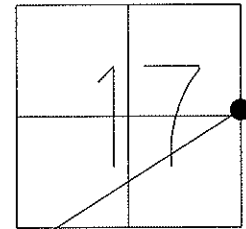
ON SURFACE - BELOW \_\_\_\_\_

LEFT - Q PAV'T - RIGHT \_\_\_\_\_

8'± TO WEST EDGE PAVEMENT

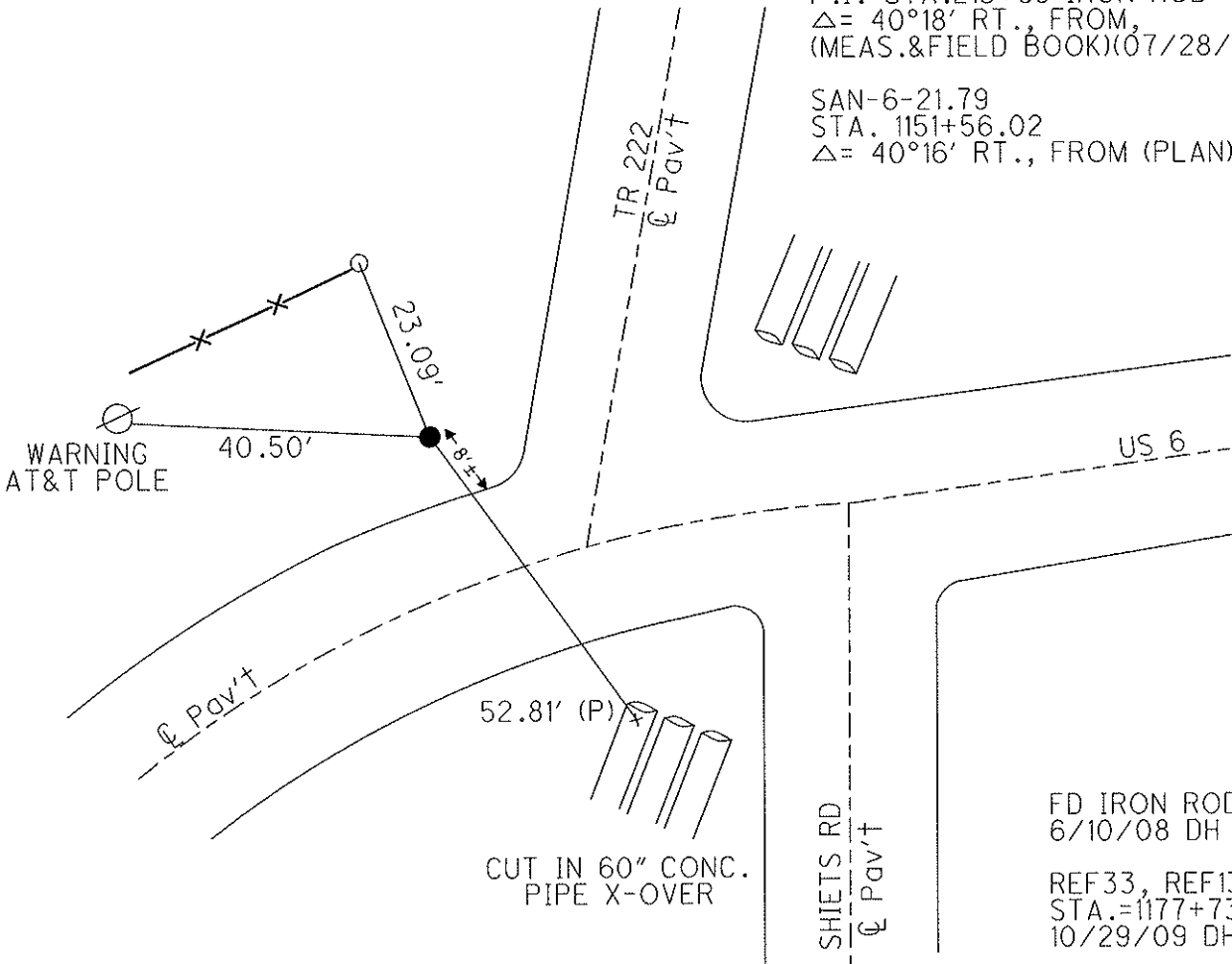
S.L.M. 1177+73.50

GPS Northing: 629673.848 Easting: 1822739.560



NOTE: 04/02/91  
 P.I.=STA.213+65 IRON ROD  
 $\Delta = 40^{\circ}18'$  RT., FROM,  
 (MEAS.&FIELD BOOK)(07/28/1975?)

SAN-6-21.79  
 STA. 1151+56.02  
 $\Delta = 40^{\circ}16'$  RT., FROM (PLAN)



FD IRON ROD  
 6/10/08 DH  
 REF33, REF133  
 STA.=1177+73.50  
 10/29/09 DH

O.D.O.T. DISTRICT 2 SURVEY OFFICE

PERSONNEL \_\_\_\_\_

REFERENCE NO. \_\_\_\_\_

SHEET 9 OF 39

NOTES RIPPLE

H.C. BARBOUR

R.C. GEYMAN

DATE 4-2-1991

WEATHER \_\_\_\_\_

TEMP. 39°

ROUTE 6

COUNTY SANDUSKY

TOWNSHIP EILEY

SECTION 17

T5 N R 16 E

TYPE MONUMENT 1" IRON ROD

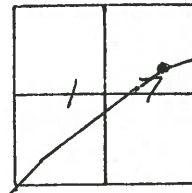
ON SURFACE - BELOW \_\_\_\_\_

LEFT - & PAV'T. - RIGHT \_\_\_\_\_

8 1/2' W OF W. EDGE PAVEMENT

S.L.M. 1185+55

33



SAN-6-21.59

1151+56.02

$\Delta = 40^{\circ}16'$  FT. (PLAN)

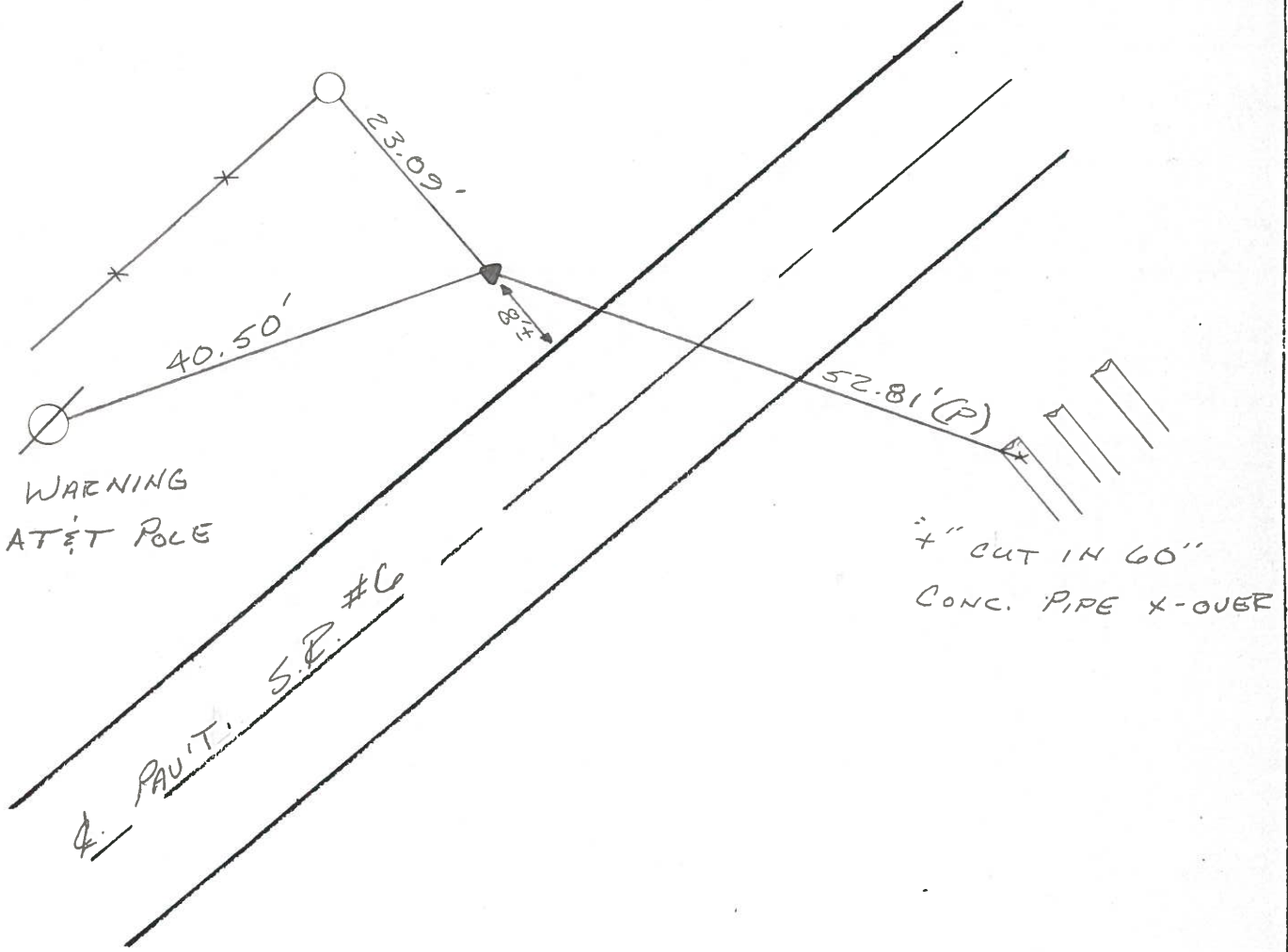
P.I.

STA. 213+65

SET 1" IRON ROD

$\Delta = 40^{\circ}18'$  FT. (MEAS. & FIELD BK.)

} 7-28-75  
?

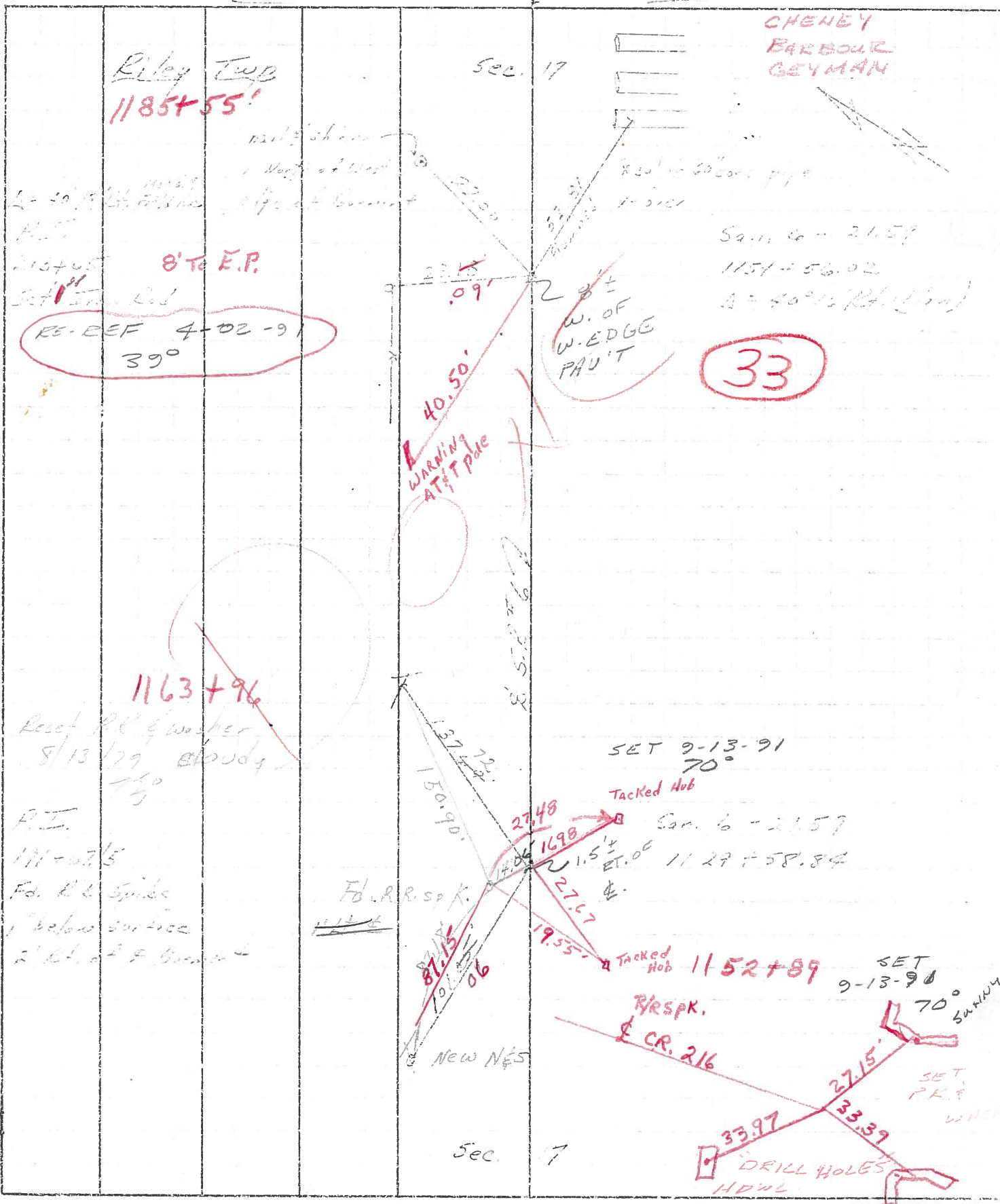


4" CUT IN 60"  
CONC. PIPE X-OVER

PERSONNEL	TITLE	PERSONNEL	TITLE
<i>James</i>		<i>Schneider</i>	
<i>Geyman</i>		<i>Hessner</i>	
		<i>Barbour</i>	

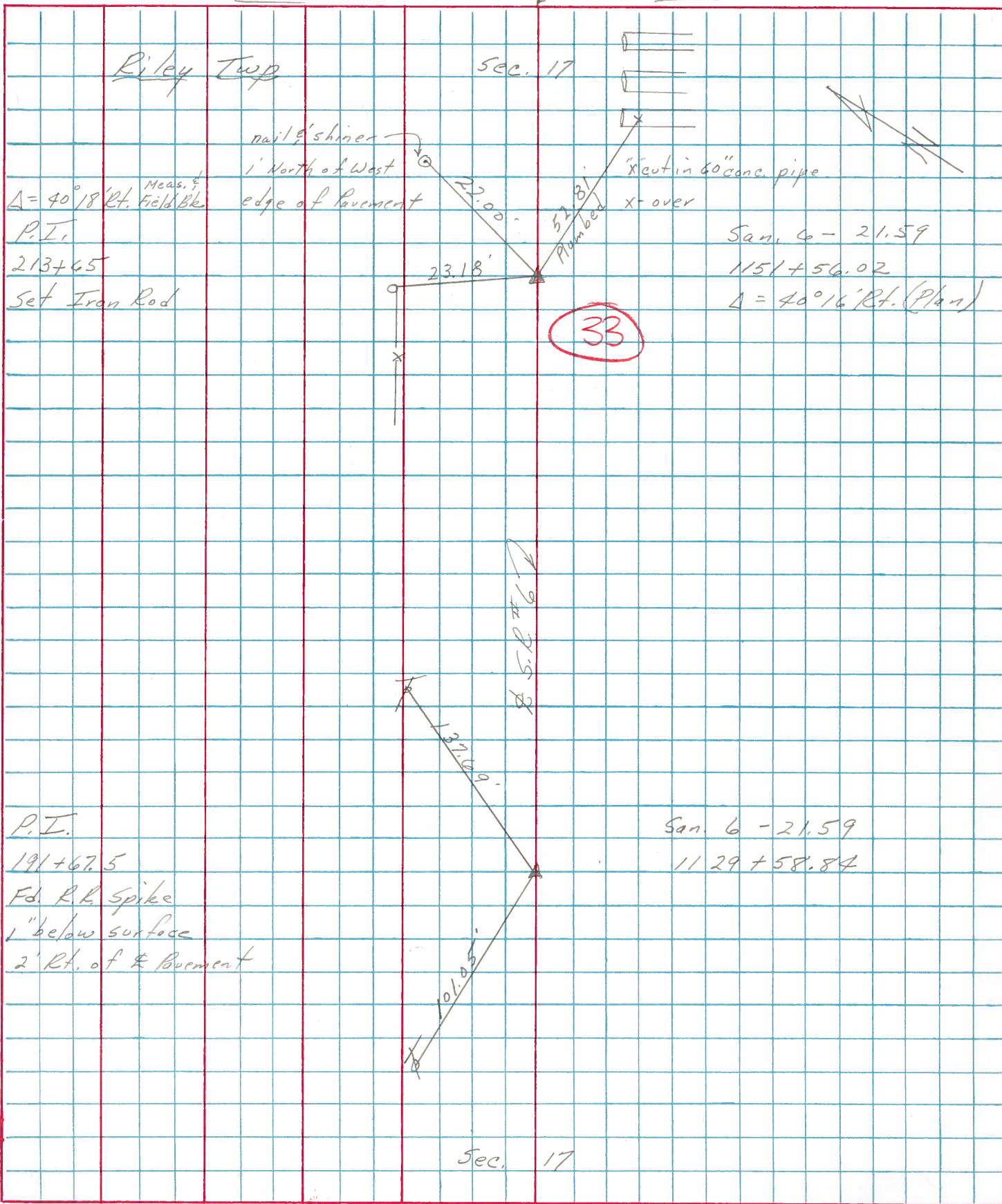
COUNTY *Sandersky* DATE *11/20/95*  
 S. R. *6* WEATHER *sun*  
 SEC. *4 - Fransa - East* TEMP. *52°*

DESCRIPTION *Ties for Control Points* JOB NO.



PERSONNEL	TITLE	PERSONNEL	TITLE	COUNTY	<u>Sandusky</u>	DATE	<u>7/28/75</u>
<u>Cronin</u>		<u>Schneider</u>		S. R.	<u># 6</u>	WEATHER	<u>sunny</u>
<u>Geyman</u>		<u>Mosser</u>		SEC.	<u>"4" - Fremont - East</u>	TEMP.	<u>82°</u>
		<u>Barbour</u>					

DESCRIPTION Ties for Control Points LEFT CENTER LINE RIGHT JOB NO.



PERSONNEL TITLE PERSONNEL TITLE

Schneider \_\_\_\_\_  
 Hawk \_\_\_\_\_  
 Mosser \_\_\_\_\_  
 Rippla \_\_\_\_\_

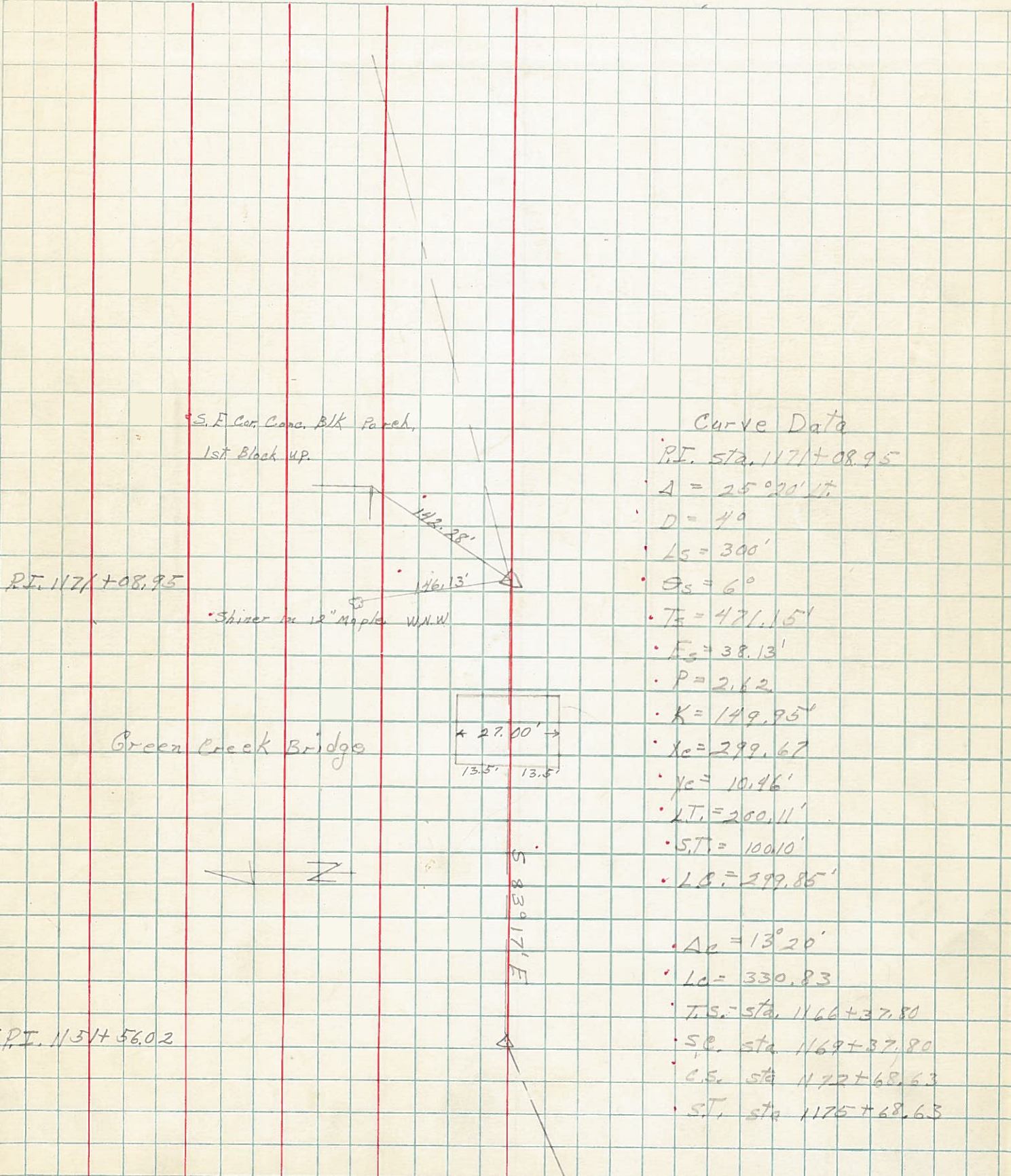
COUNTY Sandusky DATE 12-15-60

S. R. U.S.R. #6 WEATHER cloudy

SEC. Green Creek Bridge TEMP. 32°  
Jan 6 - 2272

DESCRIPTION Line Sheet

LEFT CENTER LINE RIGHT JOB NO.



Curve Data

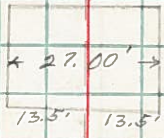
- P.I. sta. 1171+08.95
- $A = 25^{\circ} 20' 17''$
- $D = 40$
- $L_s = 300'$
- $\theta_s = 6^{\circ}$
- $T_s = 471.15'$
- $E_s = 38.13'$
- $P = 2.62$
- $K = 149.95'$
- $x_c = 299.67$
- $y_c = 10.46'$
- $L.T. = 200.11'$
- $S.T. = 100.10'$
- $L.B. = 299.85'$
- $\Delta_c = 13^{\circ} 20'$
- $L_c = 330.83$
- T.S. sta. 1166+37.80
- S.C. sta. 1169+37.80
- C.S. sta. 1172+68.63
- S.T. sta. 1175+68.63

P.I. 1171+08.95

Green Creek Bridge

S.F. Cor. Conc. Blk Paved,  
1st Block up.

Shiner in 12" Maple W.N.W.



S 83° 17' E

P.I. 1151+56.02

PERSONNEL TITLE PERSONNEL TITLE

Schneider

COUNTY Sandusky

DATE 12-29-60

Hawk

S. R. USR #6

WEATHER Cloudy-snow

Mosser

Ripple

SEC. Raccoon Ck. Bridge

TEMP. 26°

DESCRIPTION Ties for sta. on each End of Bridge & P.I.

JOB NO. \_\_\_\_\_

LEFT

CENTER LINE

RIGHT

