

O.D.O.T. DISTRICT 2 SURVEY OFFICE

PERSONNEL

REFERENCE NO. 34

SHEET 14 OF 17

NOTES HOMAN

DATE 8/18/09

ROUTE 6

H.C. HOMAN

WEATHER CLOUDY

COUNTY SANDUSKY

R.C. ROUSOS

TEMP. 75°

TOWNSHIP RILEY

SECTION 16

T 5 N R 16 E

TYPE MONUMENT P.K. & WASHER

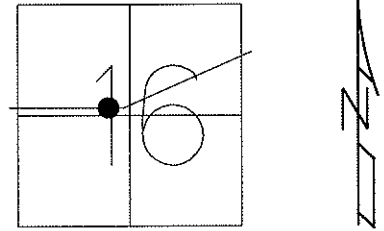
ON SURFACE - ~~BELOW~~ ON

LEFT - ~~C PAV'T~~ - RIGHT 1'

TO EDGE PAVEMENT

S.L.M. 1194+29.39

GPS Northing: 629535.246 Easting: 1824389.514



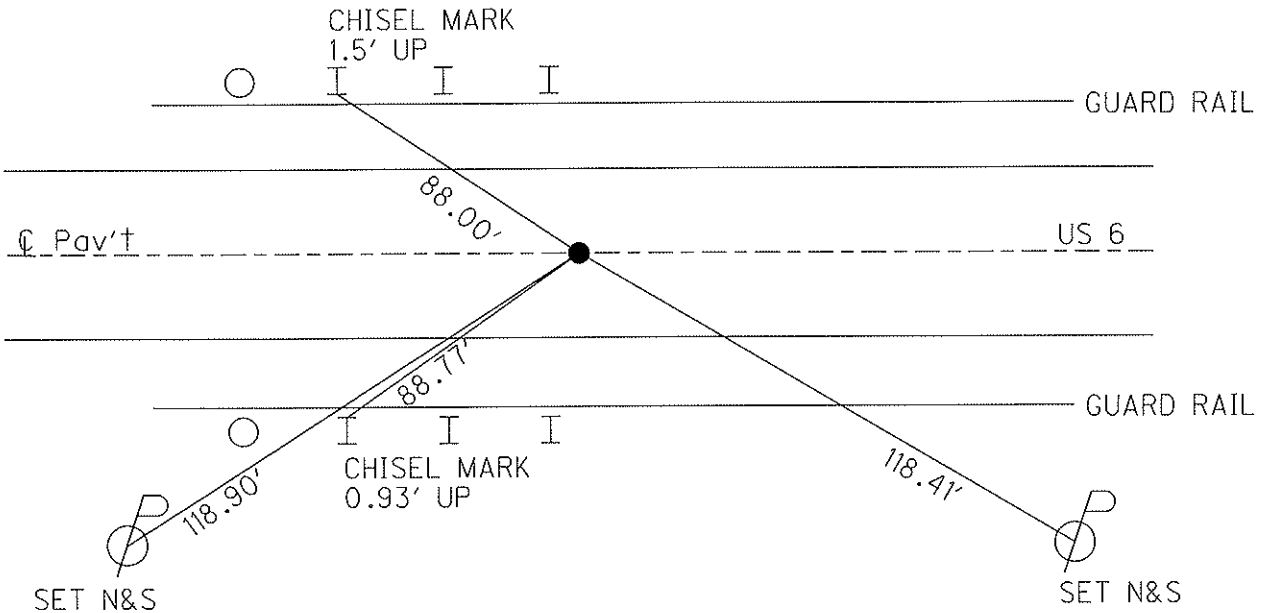
NOTE: 9/13/91
PLAN P.I.
 $\Delta=12^\circ 55'$ LT
STA. 230+08.12

FD P.K. & WASHER
6/10/08 DH

SAN-6-21.59
STA. 1167+86.50,
FROM (RECORD)

SET MAG & WASHER
10/29/09 DH

PREVIOUS MONUMENTS:
P.K. & WASHER, SMALL SPIKE



O.D.O.T. DISTRICT 2 SURVEY OFFICE

PERSONNEL _____

REFERENCE NO. _____

SHEET 10 OF 39

NOTES CHENEY

H.C. BARBOUR

R.C. GEYMAN

DATE 9-13-1991

WEATHER SUNNY

TEMP. 70°

ROUTE 6

COUNTY SANDUSKY

TOWNSHIP RICEY

SECTION 16

T. 5 N R. 16 E

TYPE MONUMENT P.K./WASHER

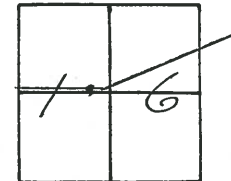
ON SURFACE - BELOW

~~LEFT~~ - & PAV'T. - RIGHT 1'

TO EDGE PAVEMENT

S.L.M. 1201491

34



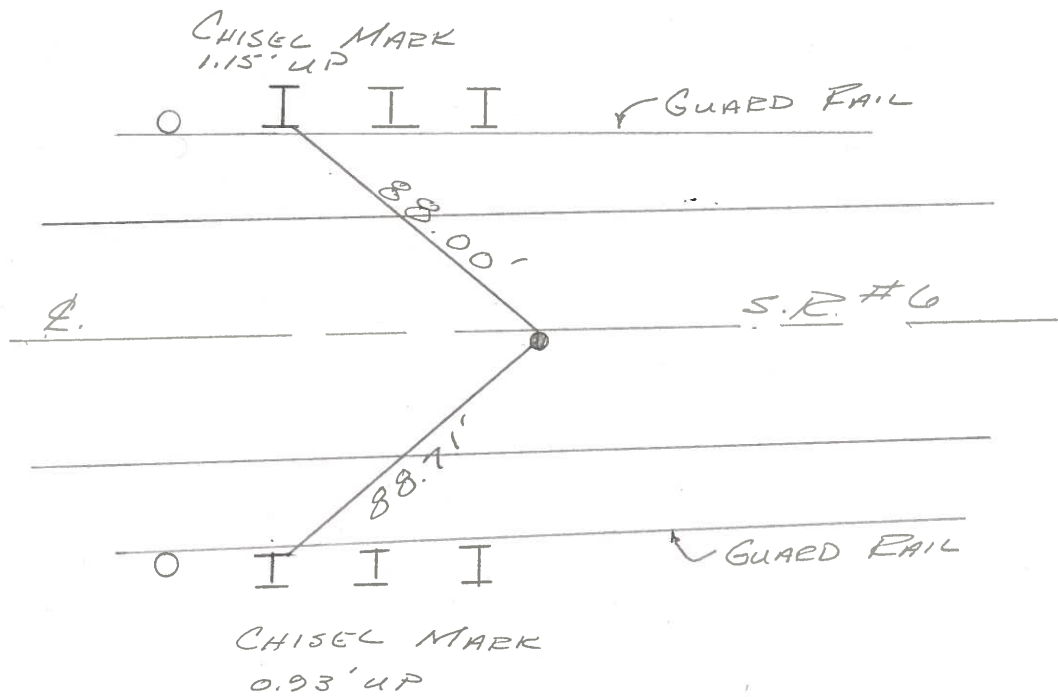
PREVIOUS MONUMENTS:
P.K./WASHER
SMALL SPIKE

SAN-6-21.59 } Record
1167+86.50 }

PLAN P.I.

$\Delta = 12^\circ 55'$ LT.

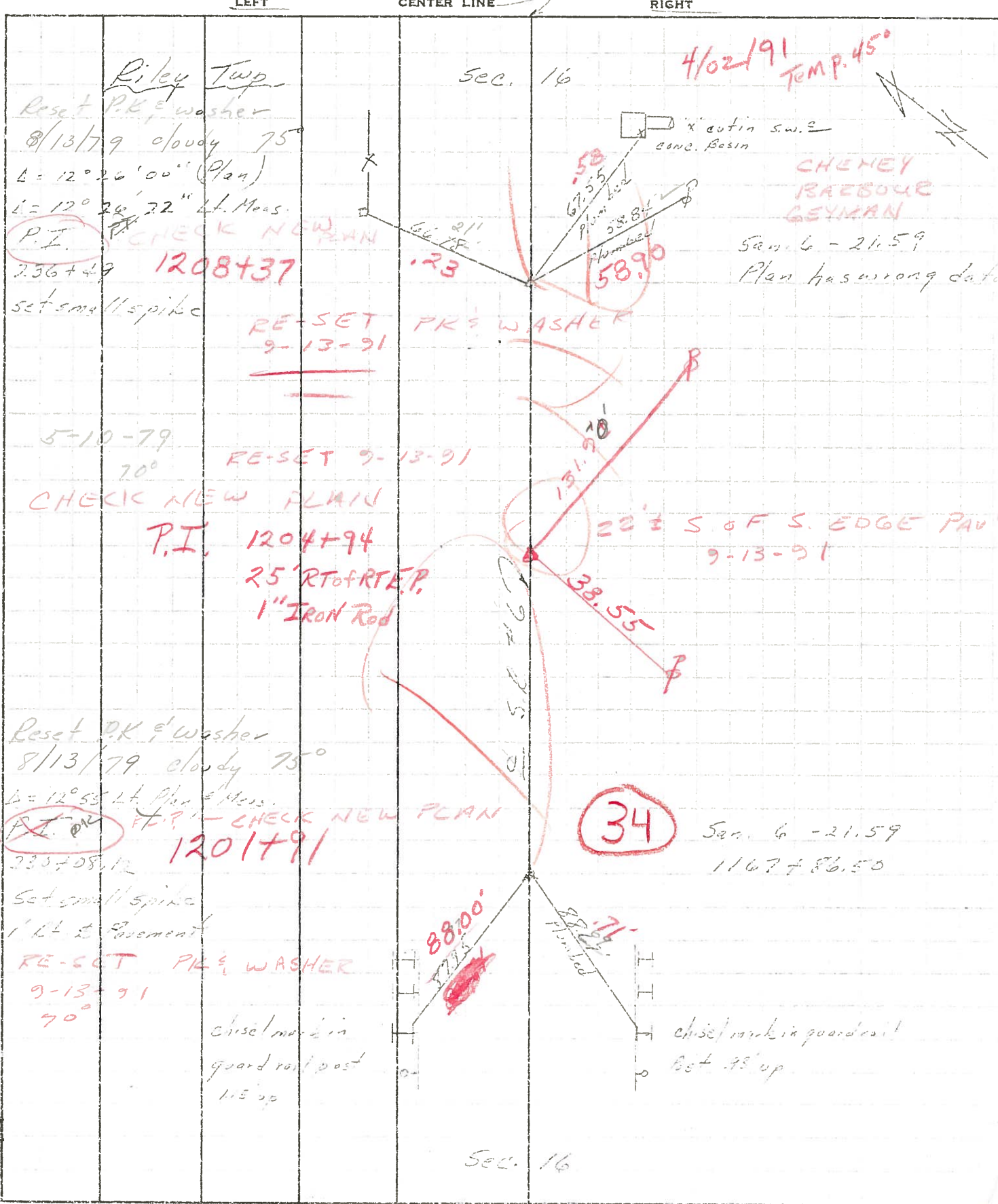
STA. 230+08.12



PERSONNEL	TITLE	PERSONNEL	TITLE
Graun		Schneider	
Geyman		Masser	
		Barbour	

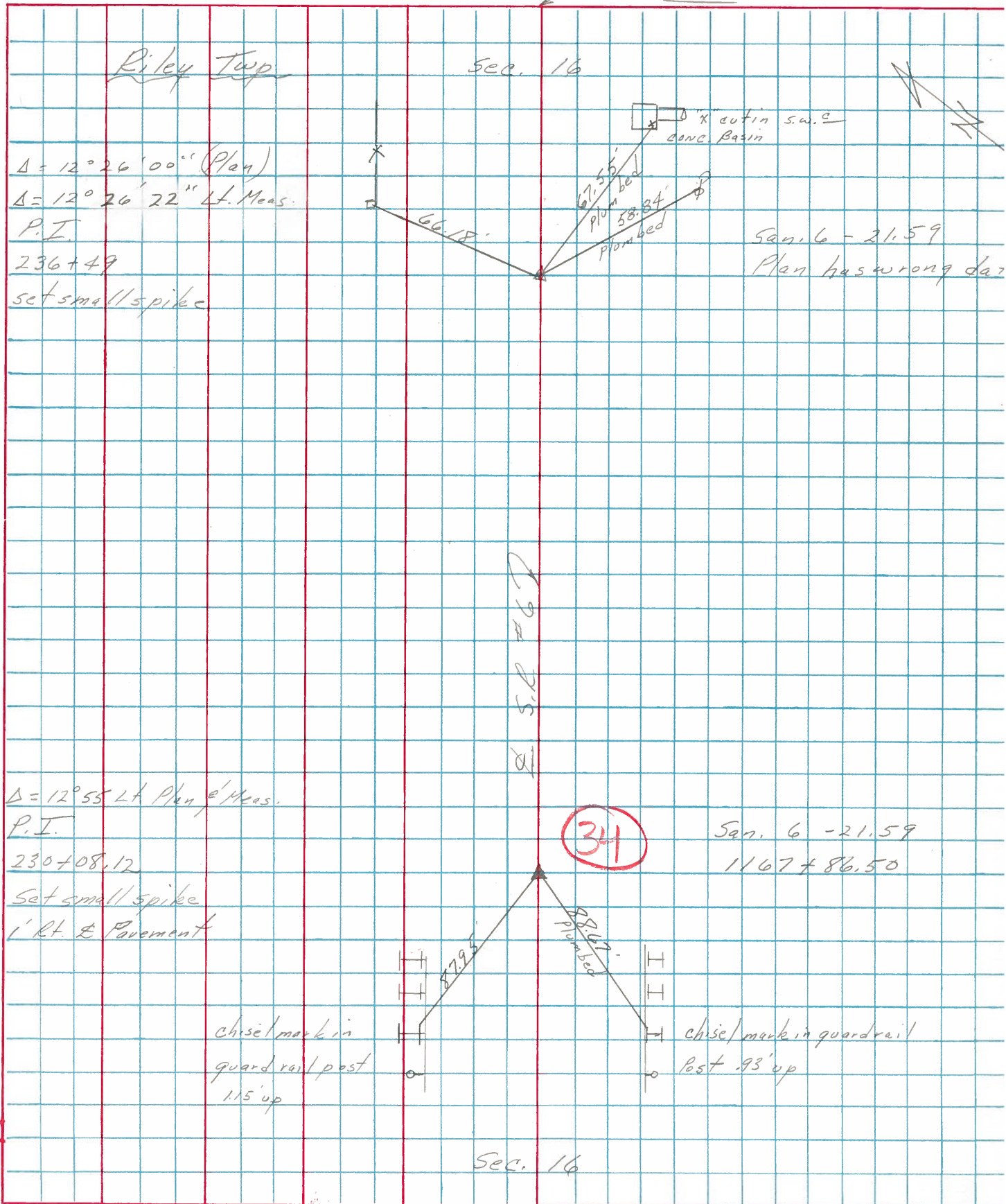
COUNTY Sandusky DATE 7/28/75
 S. R. #6 WEATHER SUNNY
 SEC. 4 - Fremont - East TEMP 83°

DESCRIPTION Ties for Control Points JOB NO. _____

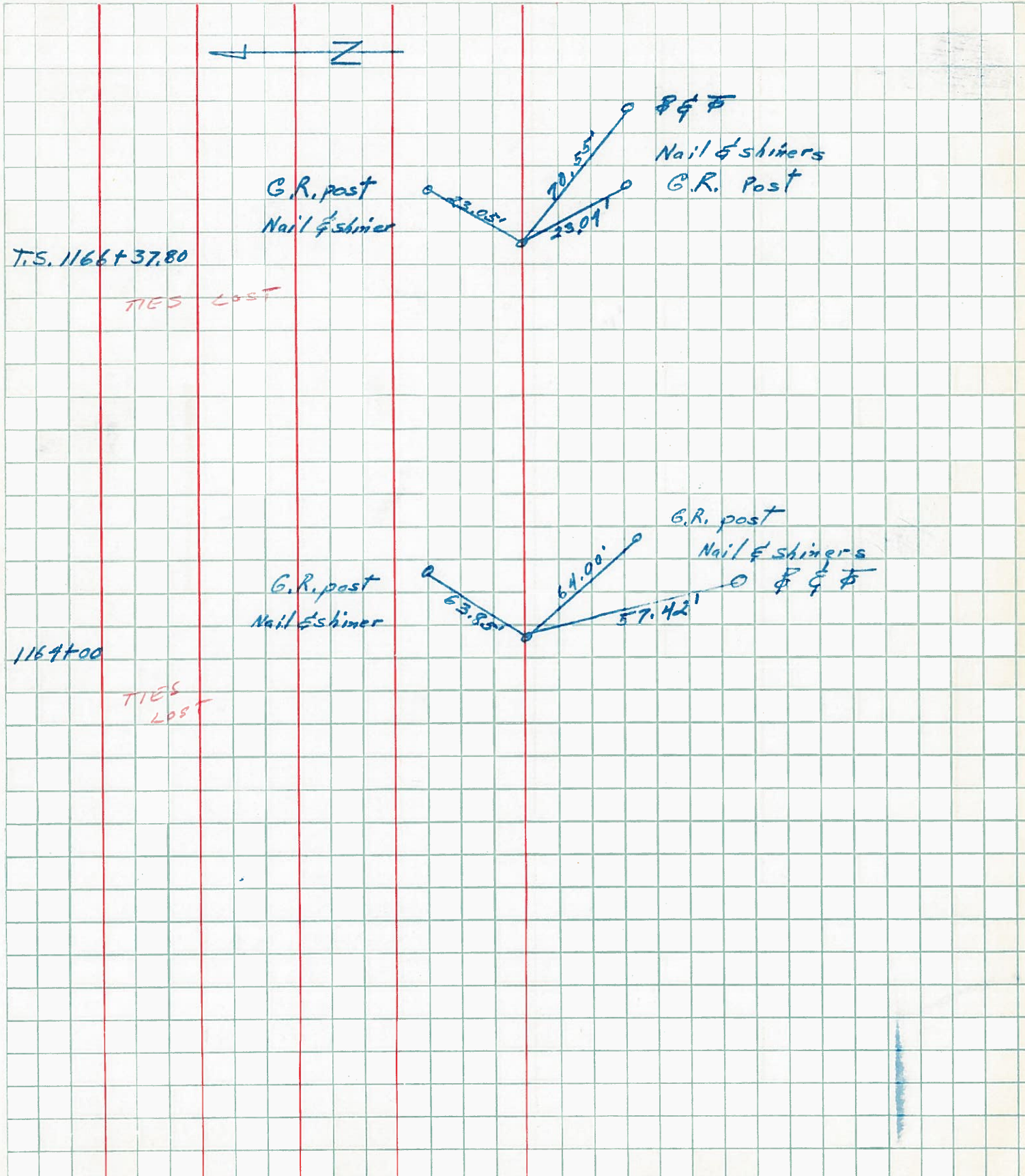


PERSONNEL	TITLE	PERSONNEL	TITLE	COUNTY	DATE	WEATHER	TEMP.
Cronin		Schneider		Sandusky	7/28/75	sunny	83°
Geyman		Mosser		S. R. #6			
		Barbour		SEC. "4" - Fremont-East			

DESCRIPTION Ties for Control Points LEFT CENTER LINE RIGHT JOB NO.



PERSONNEL	TITLE	PERSONNEL	TITLE	COUNTY	DATE
Schneider				Stadusky	12-16-60
				S. R. 11SR #6	WEATHER Cloudy-snow
				SEC. Green Creek	TEMP. 24°
DESCRIPTION	Ties for points on each side of Bridge			JOB NO.	
	LEFT	CENTER LINE	RIGHT		



PERSONNEL	TITLE	PERSONNEL	TITLE	COUNTY	DATE
Schneider				Sandusky	12-16-60
				S. R. U.S.R #6	WEATHER Cloudy-snow
				SEC. Green Creek	TEMP. 24°
DESCRIPTION	Ties for points on each side of Bridge			JOB NO. 2272	
	LEFT	CENTER LINE	RIGHT		

