

O.D.O.T. DISTRICT 2 SURVEY OFFICE (USE ONLY)

PERSONNEL

REFERENCE NO. 36 A

SHEET 18 OF 19

NOTES AUBLE

DATE 7/26/21

ROUTE US 6

H.C. NIESE

WEATHER CALM

COUNTY SANDUSKY

R.C. AUBLE

TEMP. 77°

TOWNSHIP RILEY

SECTION 16

DWG BY NIESE

PID 108868

T 5 N R 16 E

TYPE MONUMENT MAG/WASHER

ON SURFACE - ~~BELOW~~ ON

OFFSET Q PAVEMENT ON LT : RT

- TO - EDGE PAVEMENT

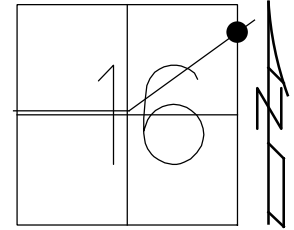
STATION: 1233+50.83

HORZ.DATUM: NAD83 (2011)

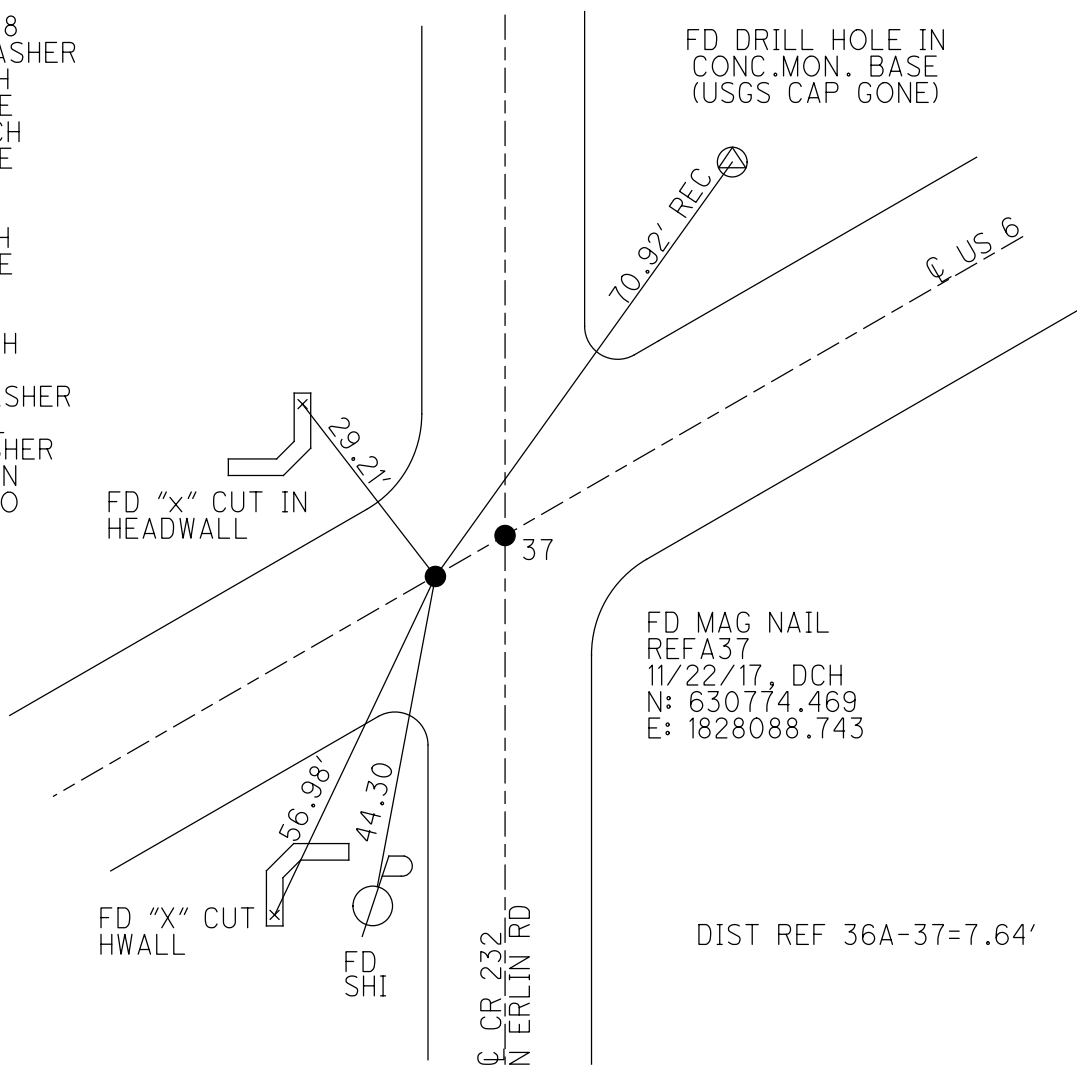
GEOID: 2012A

GRID: NORTHING: 630771.791

EASTING: 1828081.589



RECORD: P.I.
 P.K./WASHER
 R.R. SPIKE
 STA. 1240+88
 SET P.K./WASHER
 6/9/02, DCH
 FD R.R.SPIKE
 6/10/08, DCH
 FD R.R.SPIKE
 4" DOWN
 REF37
 8/6/09, DCH
 FD R.R.SPIKE
 W/DIMPLE
 4" DOWN
 11/22/17, DCH
 8/1/18, JLL
 SET MAG/WASHER
 7/31/19, JLL
 FD MAG/WASHER
 7/26/21, TDN
 2/10/22, JFO



FD MAG NAIL
 REFA37
 11/22/17, DCH
 N: 630774.469
 E: 1828088.743

DIST REF 36A-37=7.64'

O.D.O.T. DISTRICT 2 SURVEY OFFICE (USE ONLY)

PERSONNEL

REFERENCE NO. 36 A

SHEET 18 OF 19

NOTES AUBLE

DATE 7/26/21

ROUTE US 6

H.C. NIESE

WEATHER CALM

COUNTY SANDUSKY

R.C. AUBLE

TEMP. 77°

TOWNSHIP RILEY

DWG BY NIESE PID 108868

SECTION 16

T 5 N R 16 E

TYPE MONUMENT MAG/WASHER

ON SURFACE - ~~BELOW~~ ON

OFFSET Q PAVEMENT ON LT : RT

- TO - EDGE PAVEMENT

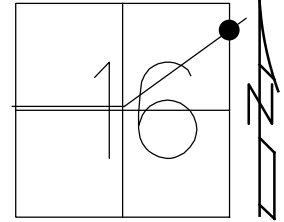
STATION: 1233+50.83

HORZ.DATUM: NAD83 (2011)

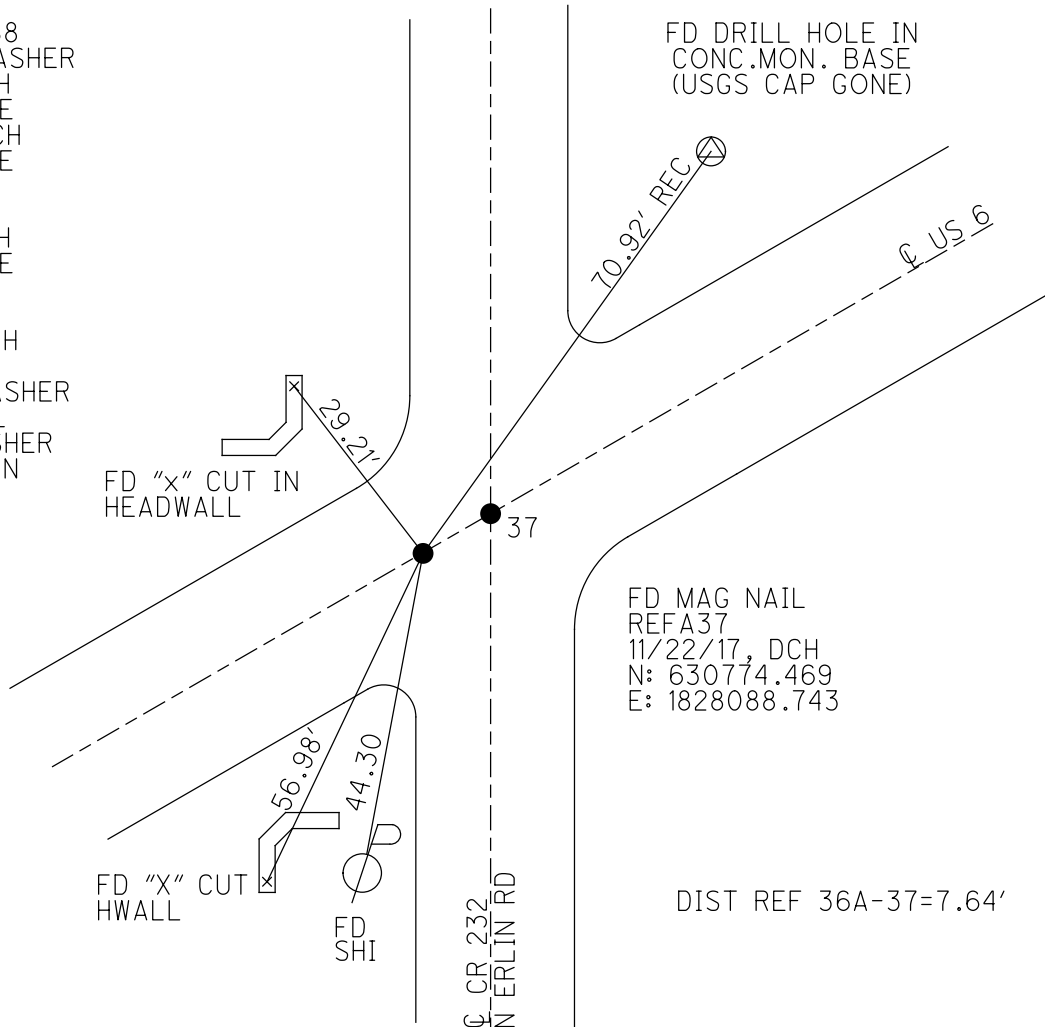
GEOID: 2012A

GRID: NORTHING: 630771.791

EASTING: 1828081.589



RECORD: P.I.
 P.K./WASHER
 R.R. SPIKE
 STA. 1240+88
 SET P.K./WASHER
 6/9/02, DCH
 FD R.R.SPIKE
 6/10/08, DCH
 FD R.R.SPIKE
 4" DOWN
 REF37
 8/6/09, DCH
 FD R.R.SPIKE
 W/DIMPLE
 4" DOWN
 11/22/17, DCH
 8/1/18, JLL
 SET MAG/WASHER
 7/31/19, JLL
 FD MAG/WASHER
 7/26/31, TDN



O.D.O.T. DISTRICT 2 SURVEY OFFICE (USE ONLY)

PERSONNEL

REFERENCE NO. 37

SHEET 17 OF 17

NOTES LEU

DATE 8/1/18

ROUTE US 6

H.C. LEU

WEATHER CLOUDY

COUNTY SANDUSKY

R.C. TRENKA

TEMP. 68°

TOWNSHIP RILEY

SECTION 16

DWG BY AUBLE

PID 95769

T 5 N R 16 E

TYPE MONUMENT R.R.SPIKE W/DIMPLE

~~ON SURFACE~~ - BELOW 4"

OFFSET CL PAVEMENT 0.5' ~~LT~~ : RT

- TO - EDGE PAVEMENT

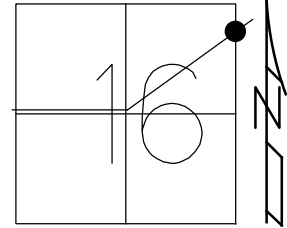
STATION: 1233+50.83

HORIZ.DATUM: NAD83 (2011)

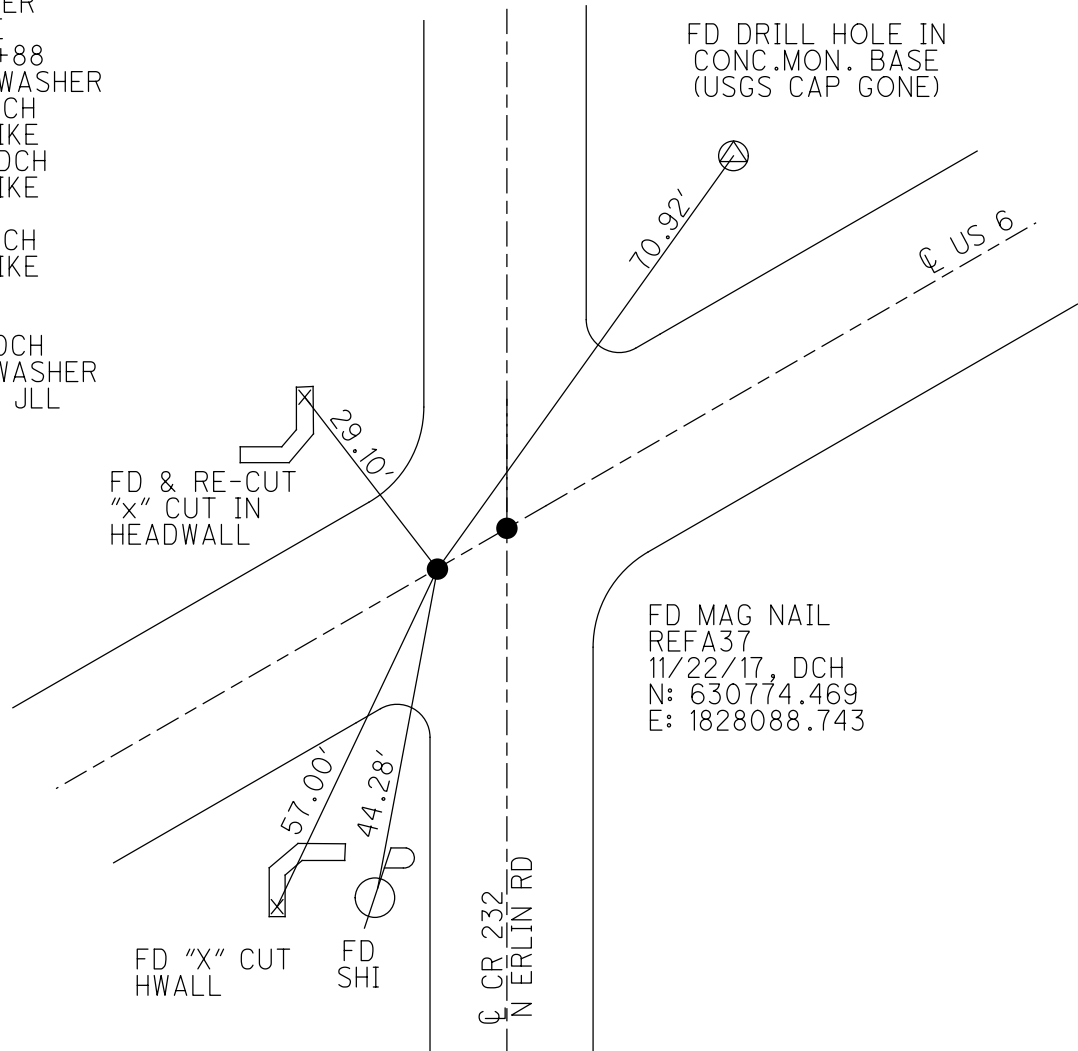
GEOID: 2012A

GRID: NORTHING: 630771.791

EASTING: 1828081.589



RECORD: P.I.
P.K./WASHER
R.R. SPIKE
STA. 1240+88
SET P.K./WASHER
6/9/02, DCH
FD R.R.SPIKE
6/10/08, DCH
FD R.R.SPIKE
4" DOWN
8/6/09, DCH
FD R.R.SPIKE
W/DIMPLE
4" DOWN
11/22/17, DCH
SET MAG/WASHER
7-31-2019, JLL



O.D.O.T. DISTRICT 2 SURVEY OFFICE

PERSONNEL

REFERENCE NO. 37

SHEET 17 OF 17

NOTES HOMAN

DATE 8/06/09

ROUTE US 6

H.C. HOMAN

WEATHER SUNNY

COUNTY SANDUSKY

R.C. ROUSOS

TEMP. 80°

TOWNSHIP RILEY

SECTION 16

T 5 N R 16 E

TYPE MONUMENT R.R. SPIKE

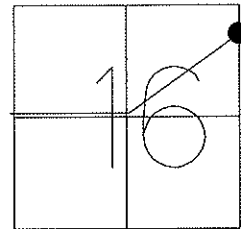
~~ON SURFACE~~ - BELOW 4"

~~LEFT = C PAV'T = RIGHT~~ 0.5'

TO EDGE PAVEMENT

S.L.M. 1233+50.83

GPS Northing: 630771.823 Easting: 1828081.621

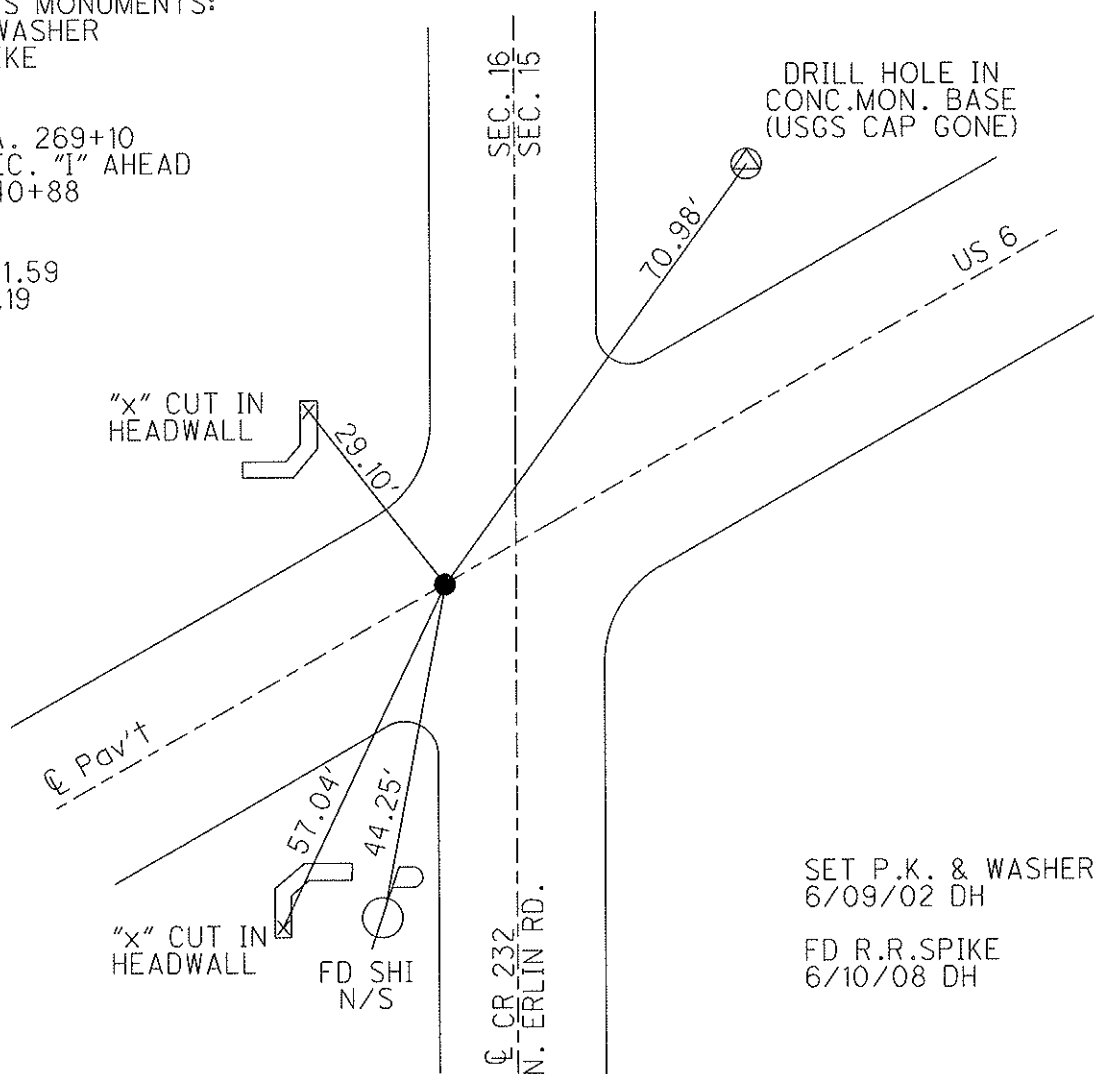


PREVIOUS MONUMENTS:

P.K. & WASHER
R.R. SPIKE

P.I.
OLD STA. 269+10
0+00 SEC. "1" AHEAD
STA. 1240+88

CK PLAN
SAN-6-21.59
1207+01.19



SET P.K. & WASHER
6/09/02 DH

FD R.R. SPIKE
6/10/08 DH

O.D.O.T. DISTRICT 2 SURVEY OFFICE

PERSONNEL

REFERENCE NO. 37

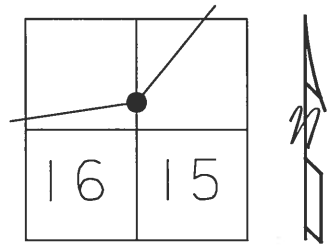
SHEET 1 OF 27

NOTES ROUSOS
 H.C. VAN DUSEN
 R.C. MOSSER
HOMAN

DATE 3/16/02
 WEATHER WINDY
 TEMP. 28°

ROUTE ~~SR~~^{US} 6
 COUNTY SANDUSKY
 TOWNSHIP RILEY
 SECTION 16
T5 N R16 E

TYPE MONUMENT RR Spike
~~ON SURFACE - BELOW~~ 4"
~~LEFT - C PAVT - RIGHT~~ 0.5'
TO EDGE PAVEMENT
 S.L.M. 1240+88



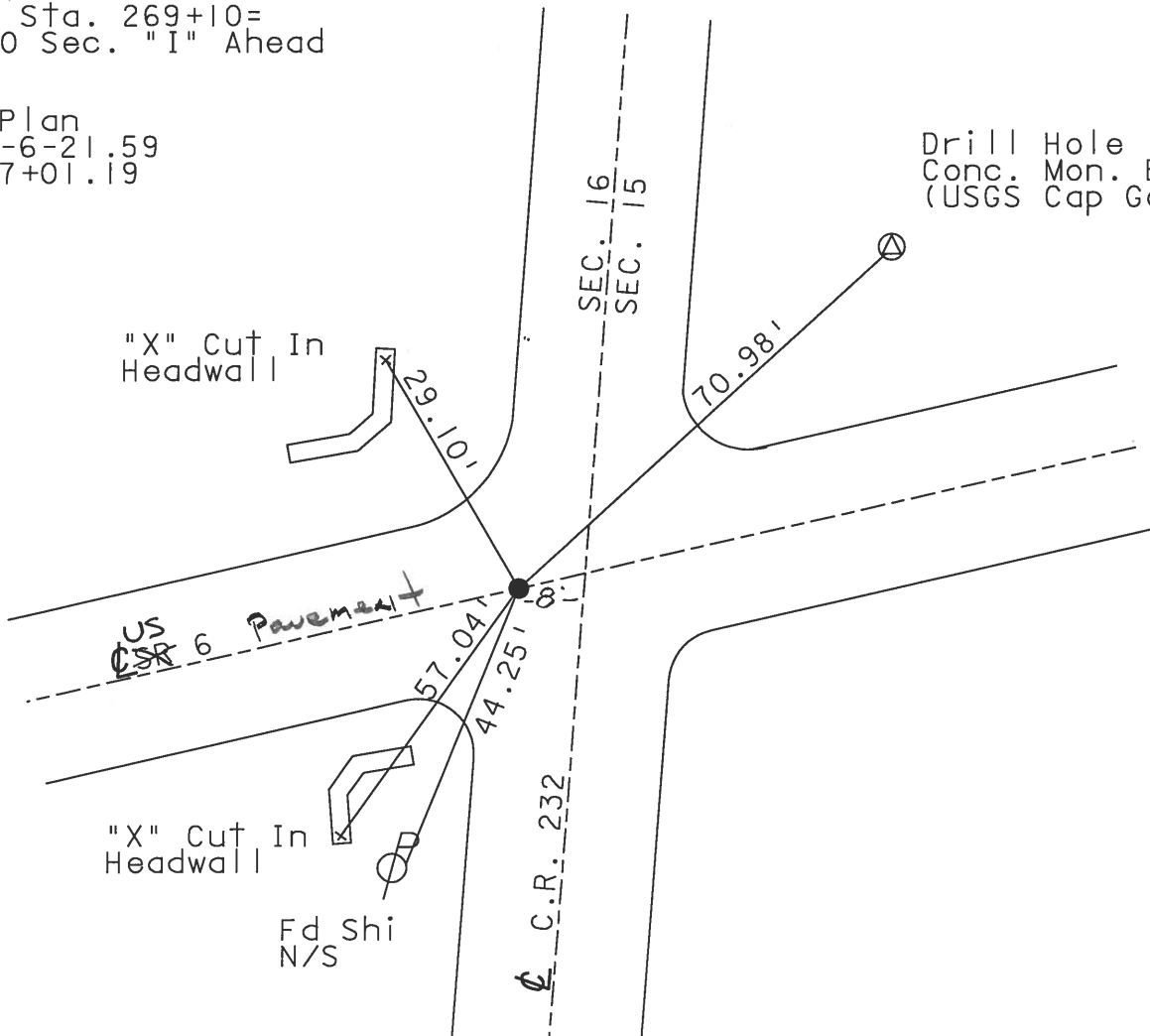
Previous Monuments:
 P.K. & Washer
 R.R. Spike

Set PK & Washer
 6-9-02 DCH

P.I.
 Old Sta. 269+10=
 0+00 Sec. "I" Ahead

CK Plan
 SAN-6-21.59
 1207+01.19

Drill Hole In
 Conc. Mon. Base
 (USGS Cap Gone)



Resurfaced 2002

O.D.O.T. DISTRICT 2 SURVEY OFFICE

PERSONNEL

REFERENCE NO. 37

SHEET 13 OF 39

NOTES CHENEY

H.C. BARBOUR

R.C. GEYMAN

DATE 2-13-1997

WEATHER SUNNY

TEMP. 70°

ROUTE 6

COUNTY SANDUSKY

TOWNSHIP RILEY

SECTION 16

T 5 N R 16 E

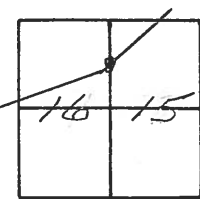
TYPE MONUMENT P.K/WASHER

ON SURFACE - BELOW

LEFT - ☉ PAV'T. - RIGHT —

— TO — EDGE PAVEMENT

S.L.M. 1240+88



PREVIOUS MONUMENTS:

P.K/WASHER

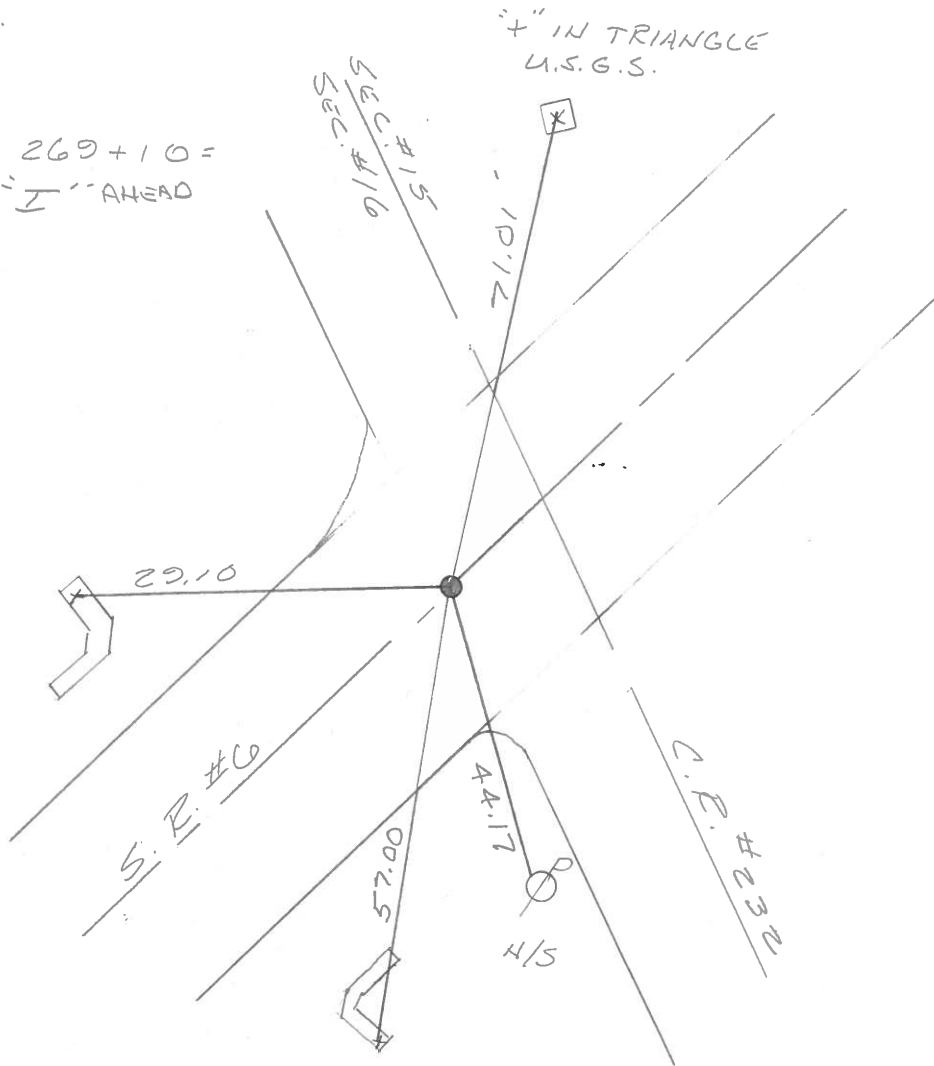
R.I.P. SPK.

P.I.

OLD STA = 269+10 =

0+00 SEC. "I" AHEAD

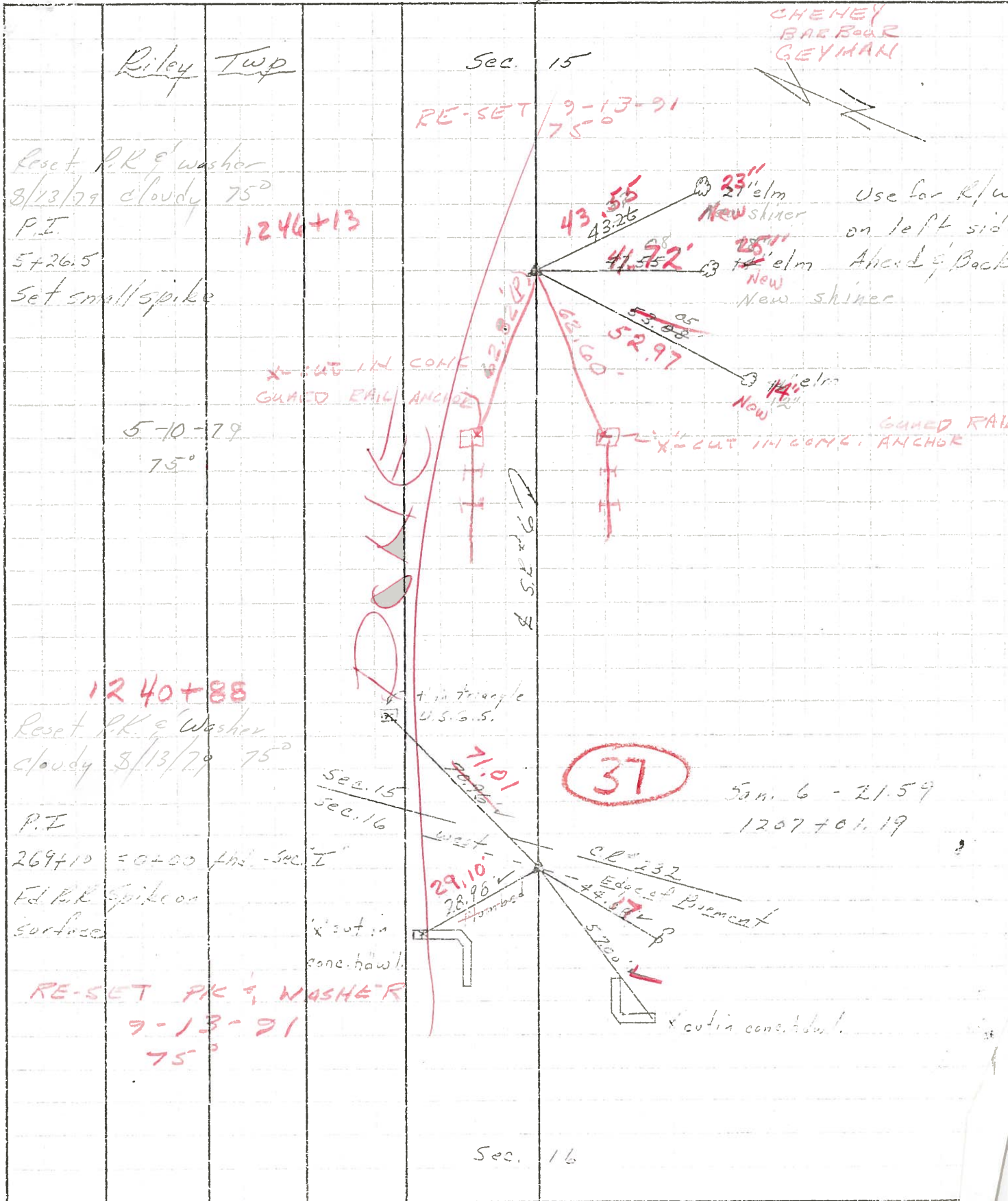
CK PLAN!
SAN-6-21.59
1207+01.19



PERSONNEL TITLE PERSONNEL TITLE
 Cronin Schneider
 Geyman Mosser
 Bonbour

COUNTY Sandusky DATE 7/28/75
 S. R. #6 WEATHER sunny
 SEC. "4" - Fremont - East TEMP. 75°

DESCRIPTION Ties for Control Points LEFT CENTER LINE RIGHT JOB NO.



PERSONNEL TITLE PERSONNEL TITLE

Cronin Schneider

Geyman Mosser

Barbour

COUNTY Sandusky

DATE 7/28/75

S. R. #6

WEATHER Sunny

SEC. "F" "4" - Fremont - East

TEMP. 85°

DESCRIPTION Ties for Control Points

JOB NO.

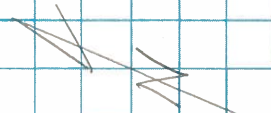
LEFT

CENTER LINE

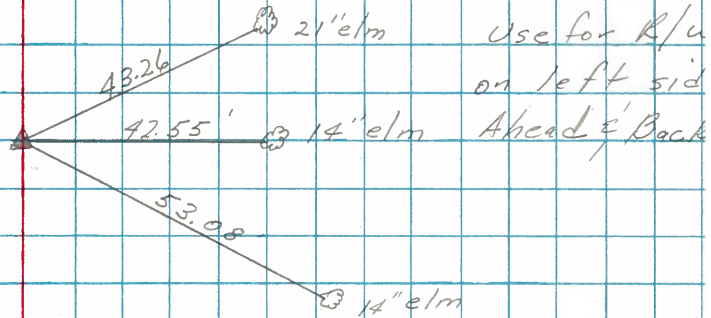
RIGHT

Riley Twp

Sec. 15

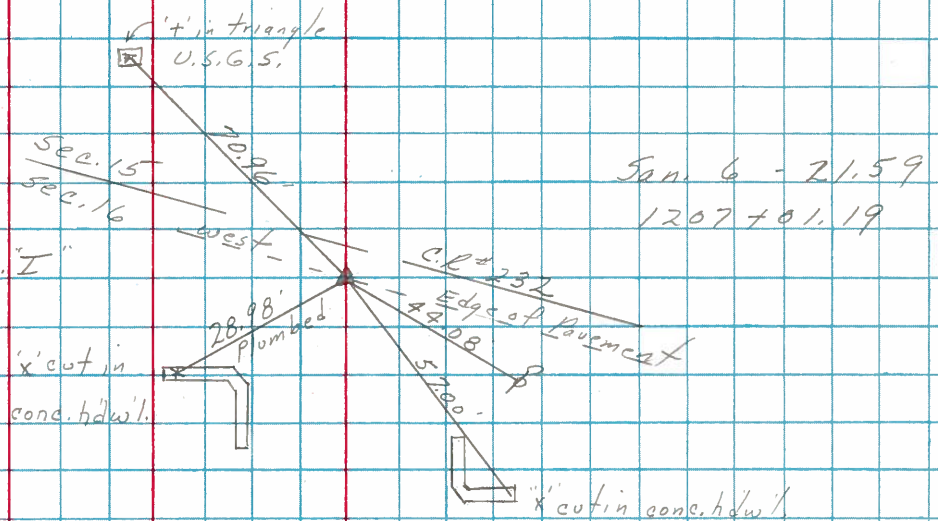


P.I.
5+26.5
Set small spike



37

P.I.
269+10 = 0+00 Ahd. - Sec. "I"
Ed. R.R. Spike on surface



Sec. 16

PERSONNEL	TITLE	PERSONNEL	TITLE	COUNTY	DATE
Schneider		Potts		Sandusky	Dec-1962
Mosser				S. R. U.S.# 6	WEATHER
Barbour				SEC. Fremont-East	TEMP.
Redding					

DESCRIPTION Ties for Control Points JOB NO. _____

LEFT	CENTER LINE	RIGHT
<p>P.I. 1207+01.19 Co. Rd. # 232 North & South Fd. P.M. Nail 7060</p> <p style="text-align: center;">31</p>		<p>5' stub surf cap 21" below surf</p>
<p>P.I. 1171+08.95 did not find 7059</p>	<p style="text-align: center;">△</p>	
<p>213+63 - 1926 P.M. - 1157+56.02 1959 P.M. did not find 7058</p>	<p style="text-align: center;">△</p>	
<p>P.I. 191+67.15 Fd. R.R. SPK. 7057</p> <p style="text-align: center;">35</p>		<p>surf cap 18" below surface</p>