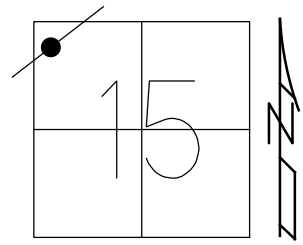


O.D.O.T. DISTRICT 2 SURVEY OFFICE (USE ONLY)

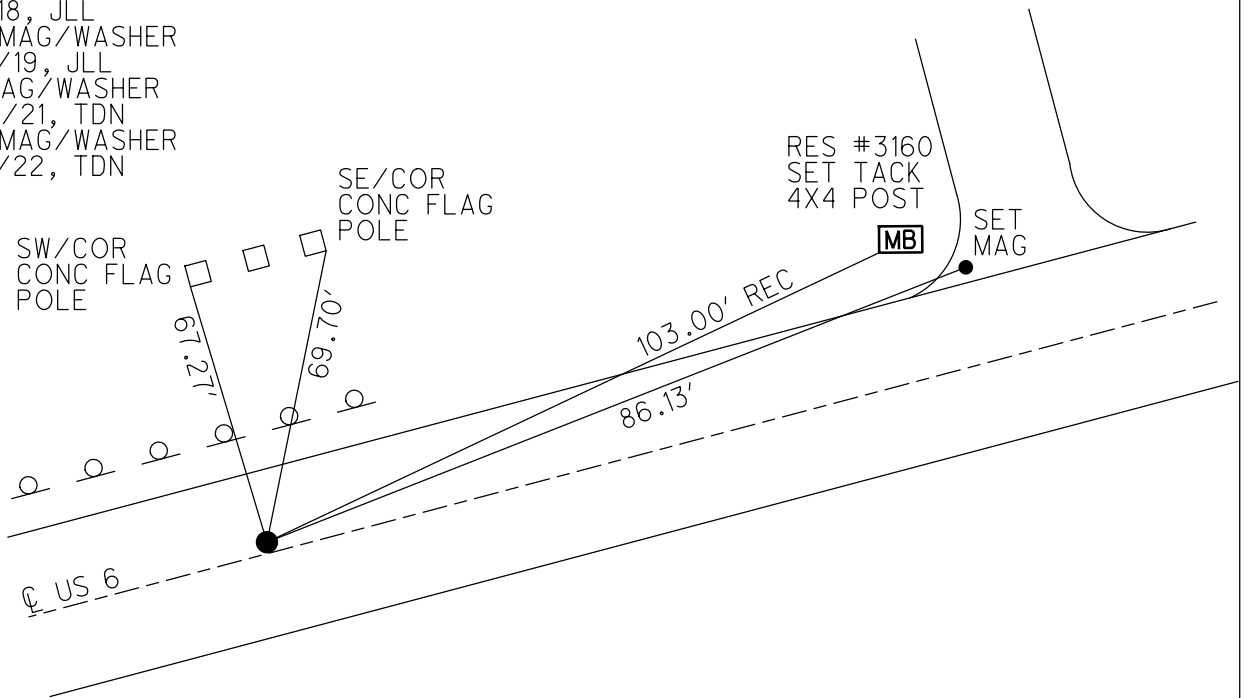
PERSONNEL \_\_\_\_\_ REFERENCE NO. 37 A SHEET 1 OF 34  
 NOTES AUBLE DATE 7/26/21 ROUTE US 6  
 H.C. NIESE WEATHER CALM COUNTY SANDUSKY  
 R.C. AUBLE TEMP. 72° TOWNSHIP RILEY  
 DWG BY NIESE PID 108868 SECTION 15  
 T 5 N R 16 E

TYPE MONUMENT MAG/WASHER  
 ON SURFACE - ~~BELOW~~ ON  
 OFFSET ☐ PAVEMENT 0.4' LT : ~~RT~~  
- TO - EDGE PAVEMENT  
 STATION: 1246+13



HORZ. DATUM: NAD83 (2011) GEOID: NAVD88 2012A  
 GRID: NORTHING: 630956.552 EASTING: 1828574.771

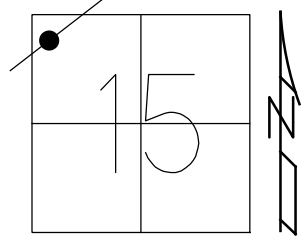
RECORD: P.I.  
 OLD STA 5+26.5  
 P.K./WASHER  
 SMALL SPIKE  
 FD P.K./WASHER  
 3/16/02, DCH  
 SET P.K./WASHER  
 6/9/02, DCH  
 FD P.K./WASHER  
 REFB37  
 11/22/17, DCH  
 8/1/18, JLL  
 SET MAG/WASHER  
 7/31/19, JLL  
 FD MAG/WASHER  
 7/26/21, TDN  
 SET MAG/WASHER  
 1/28/22, TDN



O.D.O.T. DISTRICT 2 SURVEY OFFICE (USE ONLY)

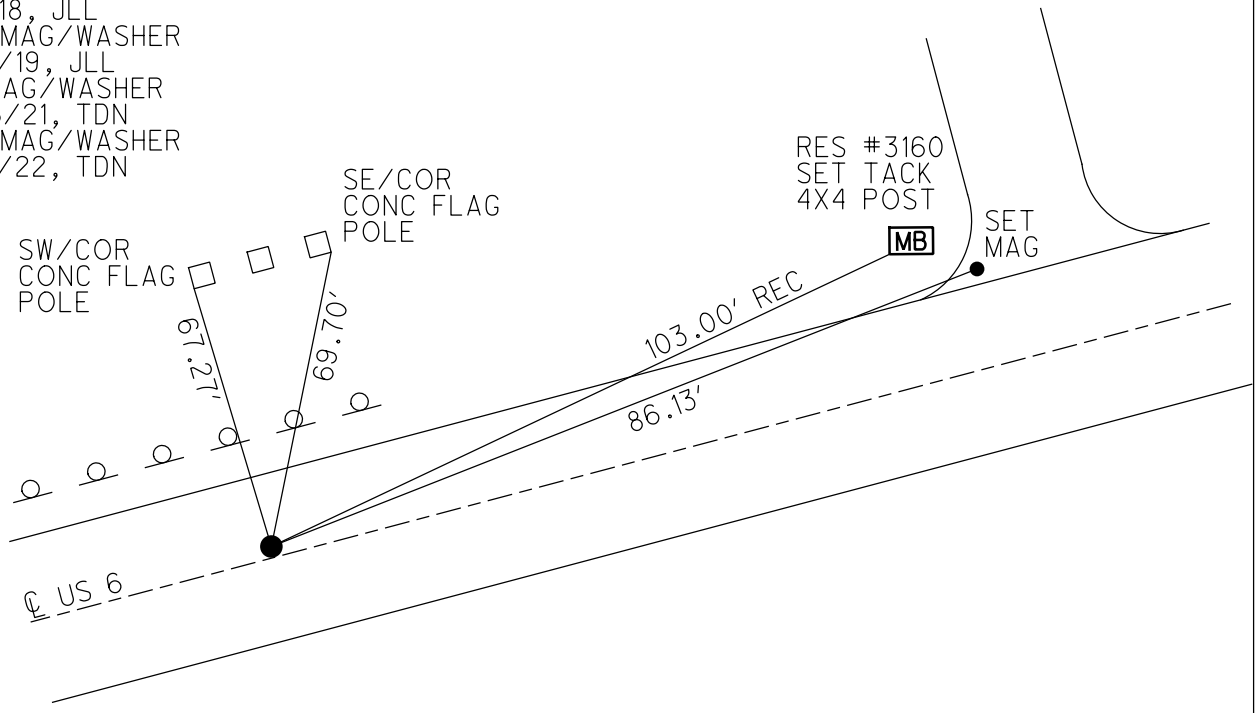
PERSONNEL	REFERENCE NO. <u>37 A</u>	SHEET <u>1</u> OF <u>34</u>
NOTES <u>AUBLE</u>	DATE <u>7/26/21</u>	ROUTE <u>US 6</u>
H.C. <u>NIESE</u>	WEATHER <u>CALM</u>	COUNTY <u>SANDUSKY</u>
R.C. <u>AUBLE</u>	TEMP. <u>72°</u>	TOWNSHIP <u>RILEY</u>
DWG BY <u>NIESE</u>	PID <u>108868</u>	SECTION <u>15</u>
		T <u>5</u> N R <u>16</u> E

TYPE MONUMENT MAG/WASHER  
 ON SURFACE - ~~BELOW~~ ON  
 OFFSET  $\varnothing$  PAVEMENT 0.4' LT : ~~RT~~  
- TO - EDGE PAVEMENT  
 STATION: 1246+13



HORIZ.DATUM: NAD83 (2011) GEOID: NAVD88 2012A  
 GRID: NORTHING: 630956.552 EASTING: 1828574.771

RECORD: P.I.  
 OLD STA 5+26.5  
 P.K./WASHER  
 SMALL SPIKE  
 FD P.K./WASHER  
 3/16/02, DCH  
 SET P.K./WASHER  
 6/9/02, DCH  
 FD P.K./WASHER  
 REFB37  
 11/22/17, DCH  
 8/1/18, JLL  
 SET MAG/WASHER  
 7/31/19, JLL  
 FD MAG/WASHER  
 7/26/21, TDN  
 SET MAG/WASHER  
 1/28/22, TDN



O.D.O.T. DISTRICT 2 SURVEY OFFICE (USE ONLY)

PERSONNEL

REFERENCE NO. 37 A

SHEET 1 OF 34

NOTES LEU  
 H.C. LEU  
 R.C. TRENKA

DATE 8/1/18  
 WEATHER CLOUDY  
 TEMP. 71°

ROUTE US 6  
 COUNTY SANDUSKY  
 TOWNSHIP RILEY  
 SECTION 15  
 T 5 N R 16 E

DWG BY AUBLE PID 95769

TYPE MONUMENT P.K./WASHER

ON SURFACE - ~~BELOW~~ ON

OFFSET 0.4' LT : RT

- TO - EDGE PAVEMENT

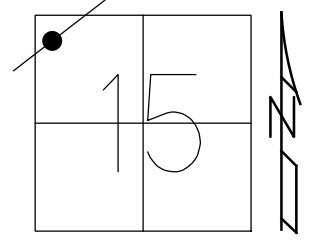
STATION: 1246+13

HORZ.DATUM: NAD83 (2011)

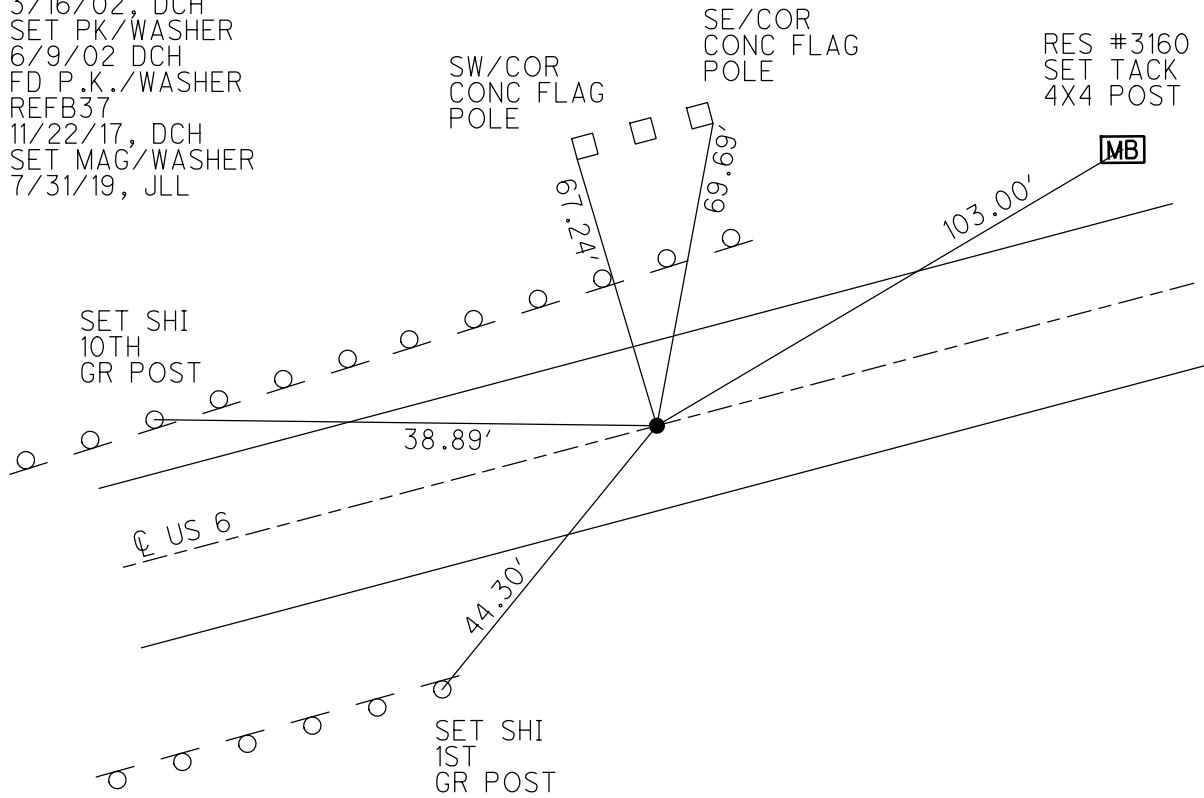
GEOID: 2012A

GRID: NORTHING: 630956.552

EASTING: 1828574.771



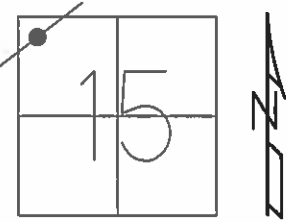
RECORD: P.I.  
 OLD STA 5+26.5  
 PREVIOUS MONUMENTS:  
 P.K./WASHER  
 SMALL SPIKE  
 FD P.K./WASHER  
 3/16/02, DCH  
 SET PK/WASHER  
 6/9/02 DCH  
 FD P.K./WASHER  
 REFB37  
 11/22/17, DCH  
 SET MAG/WASHER  
 7/31/19, JLL



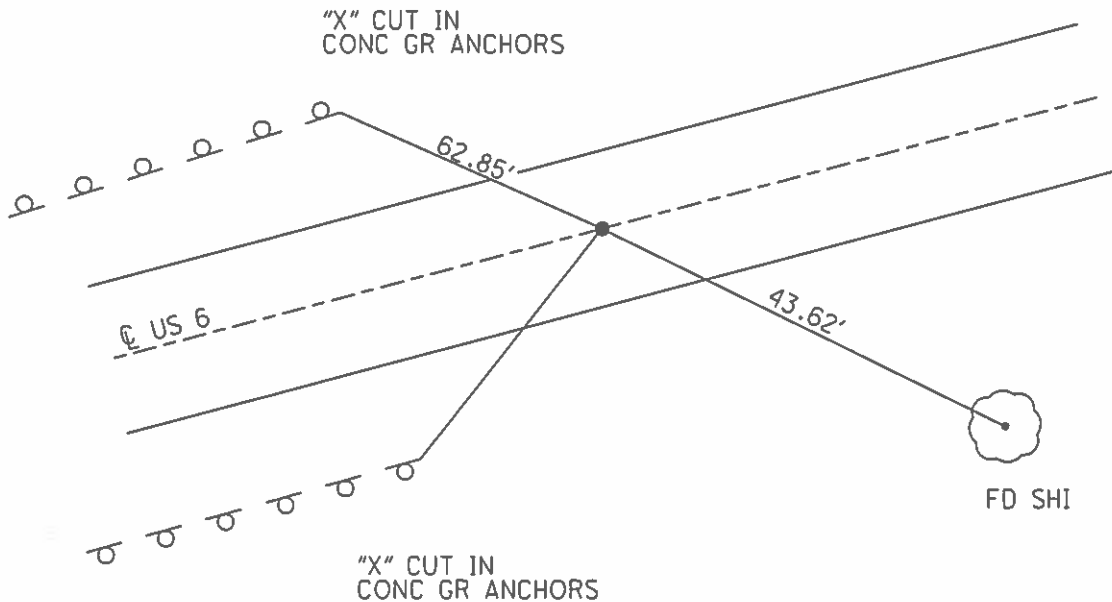
**O.D.O.T. DISTRICT 2 SURVEY OFFICE (USE ONLY)**

PERSONNEL	REFERENCE NO.	37 A	SHEET	1	OF	31
NOTES	ROUSOS	DATE	03/16/02	ROUTE	US 6	
H.C.	VAN DUSEN	WEATHER	WINDY	COUNTY	SANDUSKY	
R.C.	MOSSER	TEMP.	28°	TOWNSHIP	RILEY	
	HOMAN			SECTION	15	
				T	5	N
				R	16	E

TYPE MONUMENT PK/WASHER  
 ON SURFACE - ~~BELOW~~ ON  
 LEFT - ☉ PAV'T - ~~RIGHT~~ 0.5'  
- TO - EDGE PAVEMENT  
 S.L.M. 1246+13  
 GRID: NORTHING: - EASTING: -



RECORD: PI  
 OLD STA 5+26.5  
 PREVIOUS MONUMENTS:  
 PK/WASHER  
 SMALL SPIKE  
 SET PK/WASHER  
 06/09/02 DCH



O.D.O.T. DISTRICT 2 SURVEY OFFICE

PERSONNEL \_\_\_\_\_

REFERENCE NO. \_\_\_\_\_

SHEET 14 OF 39

NOTES CHENEY

H.C. BARBOUR

R.C. GEYMAN

DATE 9-13-1991

WEATHER SUNNY

TEMP. 75°

ROUTE 6

COUNTY SANDUSKY

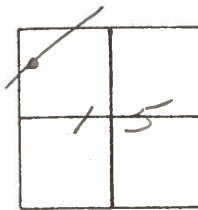
TOWNSHIP RILEY

SECTION 15

T S N R 16 E

TYPE MONUMENT P.K. / WASHER  
 ON SURFACE - BELOW  
 LEFT - ℄ PAV'T. - RIGHT \_\_\_\_\_  
 TO \_\_\_\_\_ EDGE PAVEMENT  
 S.L.M. 1246+13

**37A**



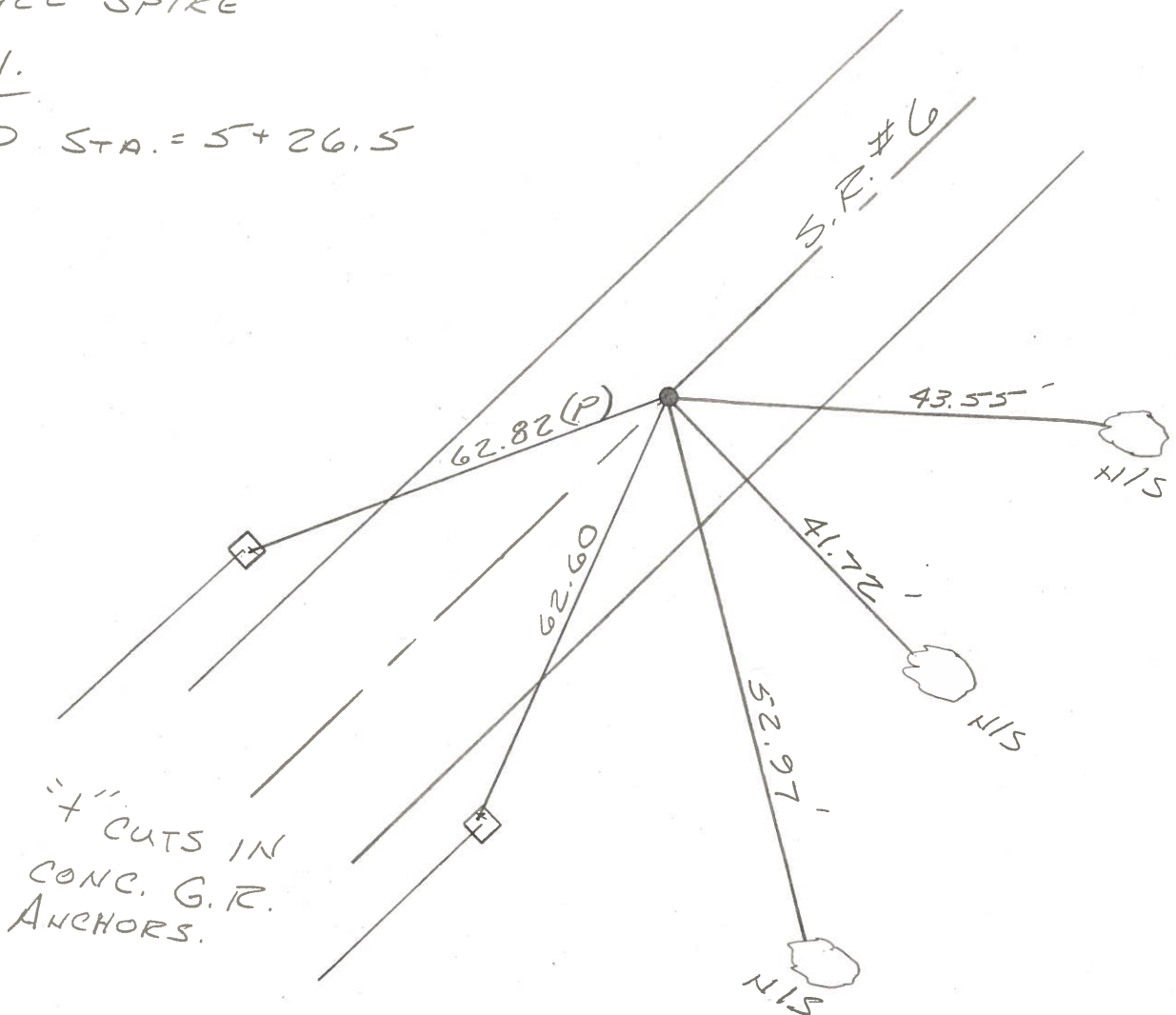
PREVIOUS MONUMENTS:

P.K. / WASHER

SMALL SPIKE

P.I.

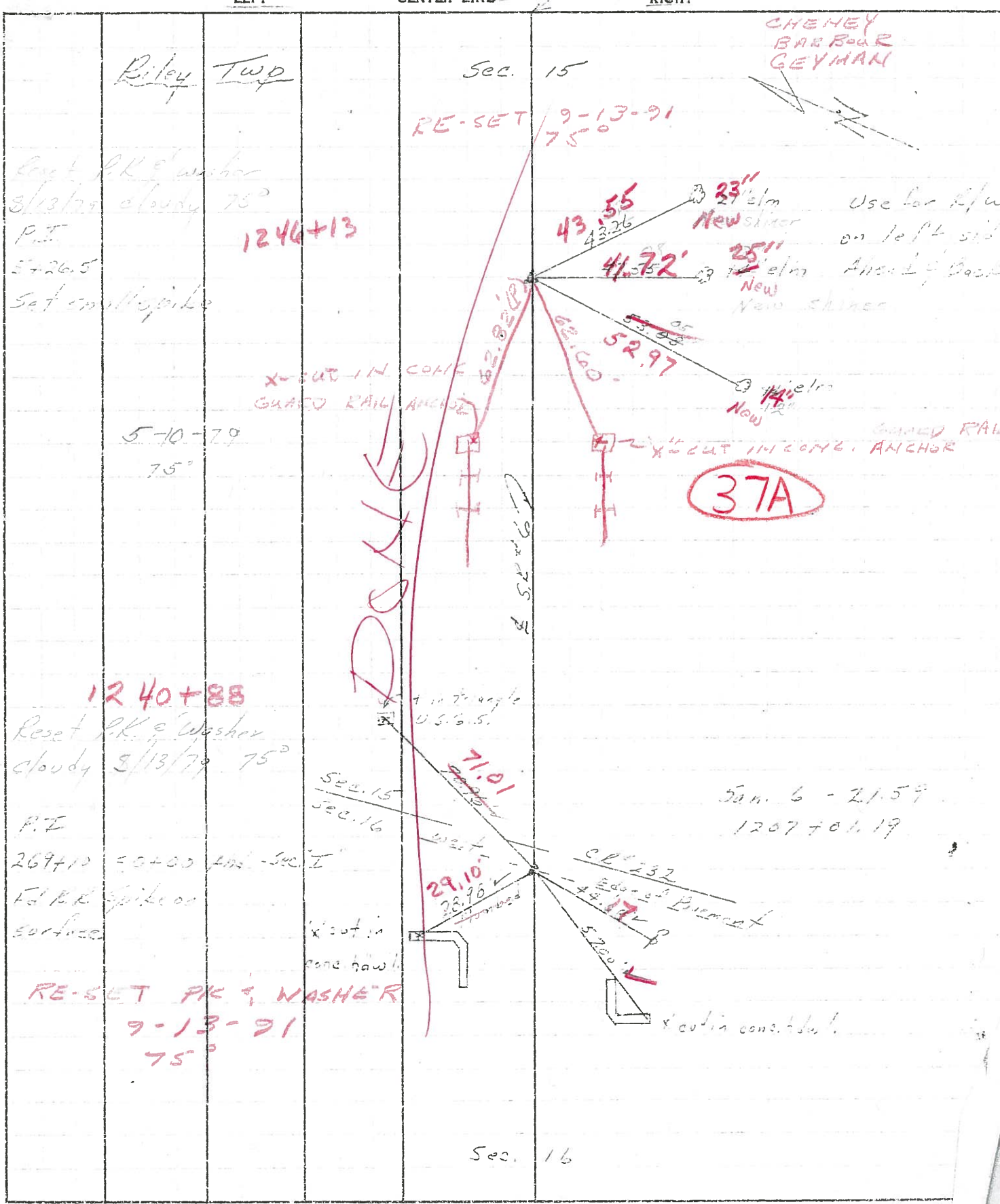
OLD STA. = 5+26.5



PERSONNEL	TITLE	PERSONNEL	TITLE
Green		Schneider	
Geyman		Mosser	
		Barbour	

COUNTY Sand. sev DATE 7/28/95  
 S. R. # 6 WEATHER Sunny  
 SEC. "4" - Fremont - East TEMP. 75°

DESCRIPTION Ties for Control Point JOB NO. \_\_\_\_\_



PERSONNEL	TITLE	PERSONNEL	TITLE
Cronin		Schneider	
Geyman		Masser	
		Barbour	

COUNTY Sandusky DATE 7/28/75

S. R. # 6 WEATHER sunny

SEC. "I" "4" - Fremont - East TEMP. 85°

DESCRIPTION Ties for Control Points LEFT CENTER LINE RIGHT JOB NO.

