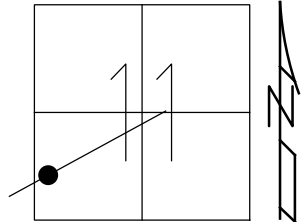


O.D.O.T. DISTRICT 2 SURVEY OFFICE (USE ONLY)

PERSONNEL _____ REFERENCE NO. 38 AA SHEET 4 OF 34
 NOTES RHOADES DATE 7/20/22 ROUTE US 6
 H.C. RHOADES WEATHER CLOUDY COUNTY SANDUSKY
 R.C. WHITAKER TEMP. 82° TOWNSHIP RILEY
 DWG BY RHOADES PID PAVETRAIN SECTION 15
 T 5 N R 16 E

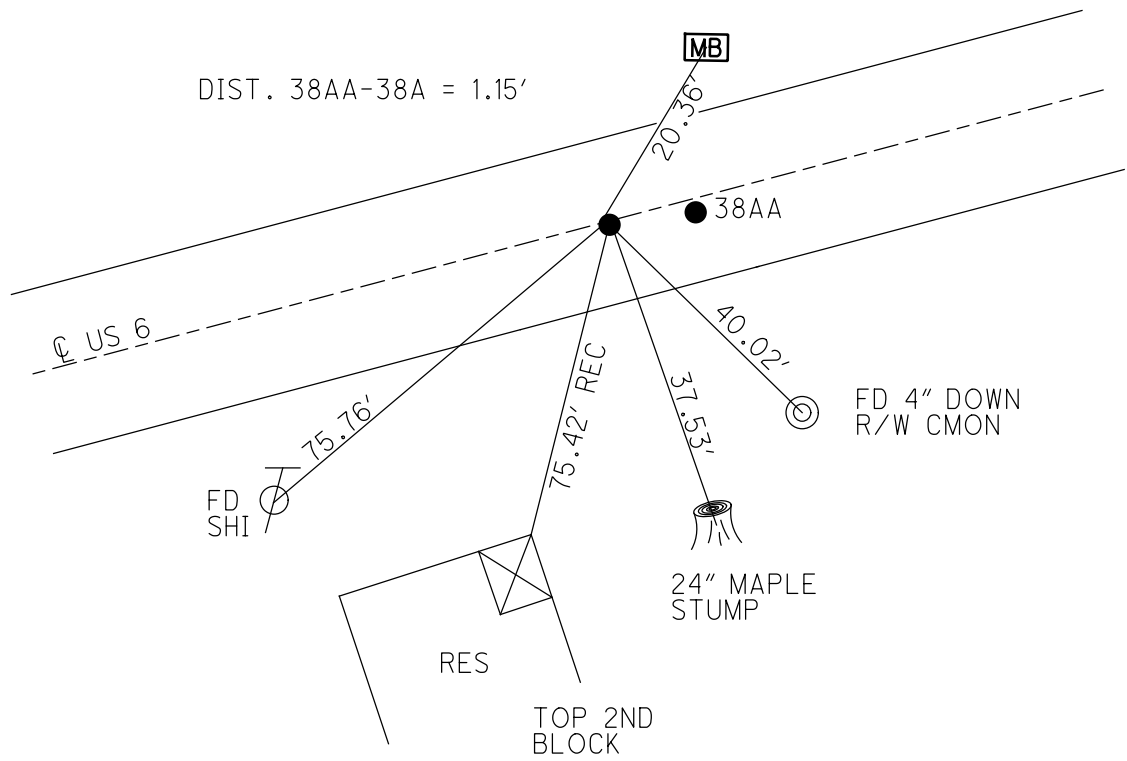
TYPE MONUMENT MAG/WASHER
 ON SURFACE - ~~BELOW~~ _____ ON _____
 OFFSET \odot PAVEMENT _____ ON _____ LT : RT
11.4' TO RT EDGE PAVEMENT
 STATION: 1306+95.85



HORIZ.DATUM: NAD83 (2011) GEOID: 2012A
 GRID: NORTHING: 633708.080 EASTING: 1834012.783

RECORD:
 FD MAG NAIL
 REFAA37
 11/22/17, JLL
 SET MAG/WASHER
 7/20/22, JMR
 FD MAG/WASHER
 1/20/23, JMR

RES #3647
 FD TACK IN
 4X4 MB POST

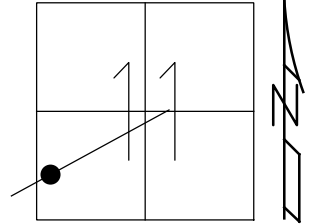


O.D.O.T. DISTRICT 2 SURVEY OFFICE (USE ONLY)

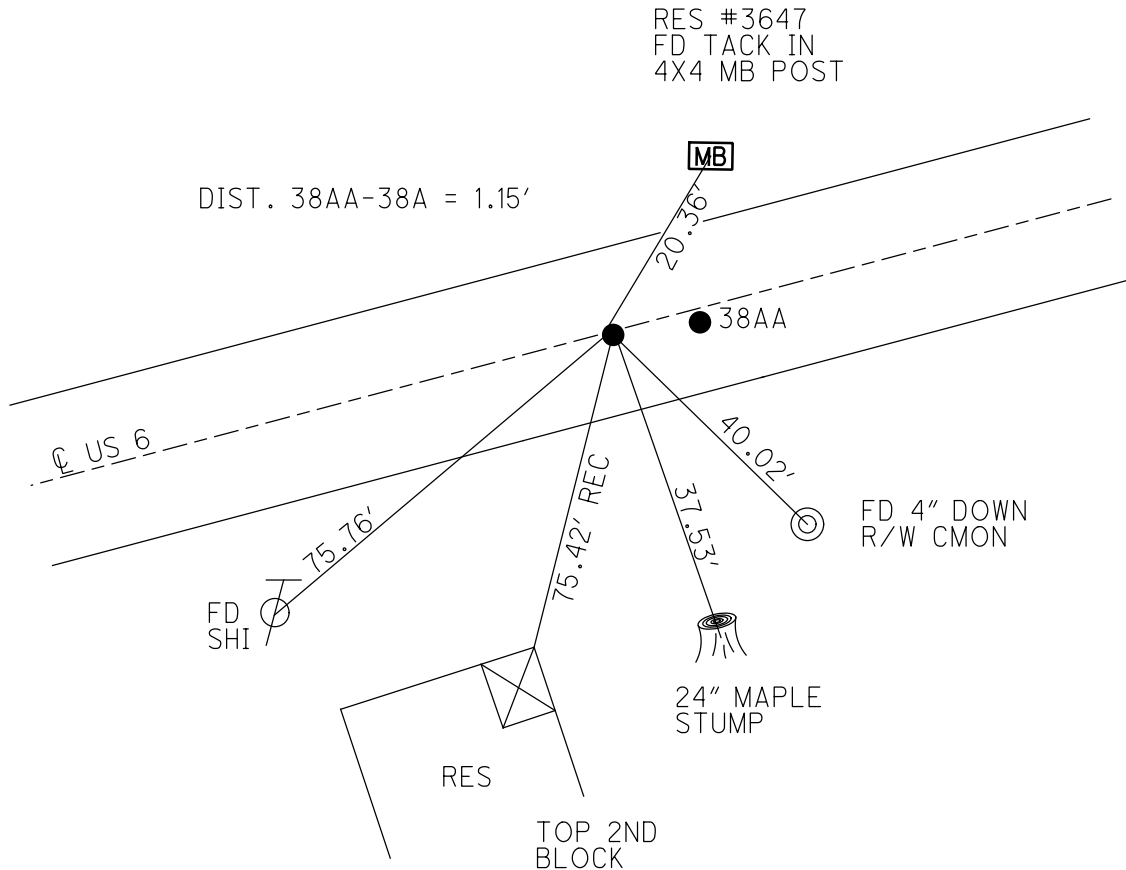
PERSONNEL _____ REFERENCE NO. 38 AA SHEET 4 OF 34
 NOTES RHOADES DATE 7/20/22 ROUTE US 6
 H.C. RHOADES WEATHER CLOUDY COUNTY SANDUSKY
 R.C. WHITAKER TEMP. 82° TOWNSHIP RILEY
 DWG BY RHOADES PID PAVE TRAIN SECTION 15
 T 5 N R 16 E

TYPE MONUMENT MAG/WASHER
 ON SURFACE - ~~BELOW~~ ON
 OFFSET ☐ PAVEMENT ON ~~LT~~ : ~~RT~~
11.4' TO RT EDGE PAVEMENT
 STATION: 1306+95.85

HORZ. DATUM: NAD83 (2011) GEOID: 2012A
 GRID: NORTHING: 633708.080 EASTING: 1834012.783



RECORD:
 FD MAG NAIL
 REFAA37
 11/22/17, JLL
 SET MAG/WASHER
 7/20/22, JMR



O.D.O.T. DISTRICT 2 SURVEY OFFICE (USE ONLY)

PERSONNEL

REFERENCE NO. 38 AA

SHEET 4 OF 34

NOTES LEU
 H.C. LEU
 R.C. TRENKA

DATE 8/1/18
 WEATHER CLOUDY
 TEMP. 84°

ROUTE US 6
 COUNTY SANDUSKY
 TOWNSHIP RILEY
 SECTION 15
 T 5 N R 16 E

DWG BY AUBLE PID 95769

TYPE MONUMENT MAG NAIL

ON SURFACE - ~~BELOW~~ ON

OFFSET \varnothing PAVEMENT ON ~~LT~~ : ~~RT~~
11.4' TO RT EDGE PAVEMENT

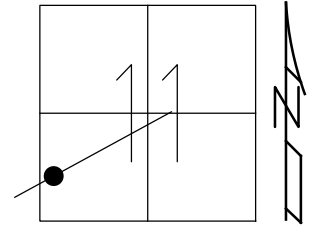
STATION: 1306+95.85

HORZ. DATUM: NAD83 (2011)

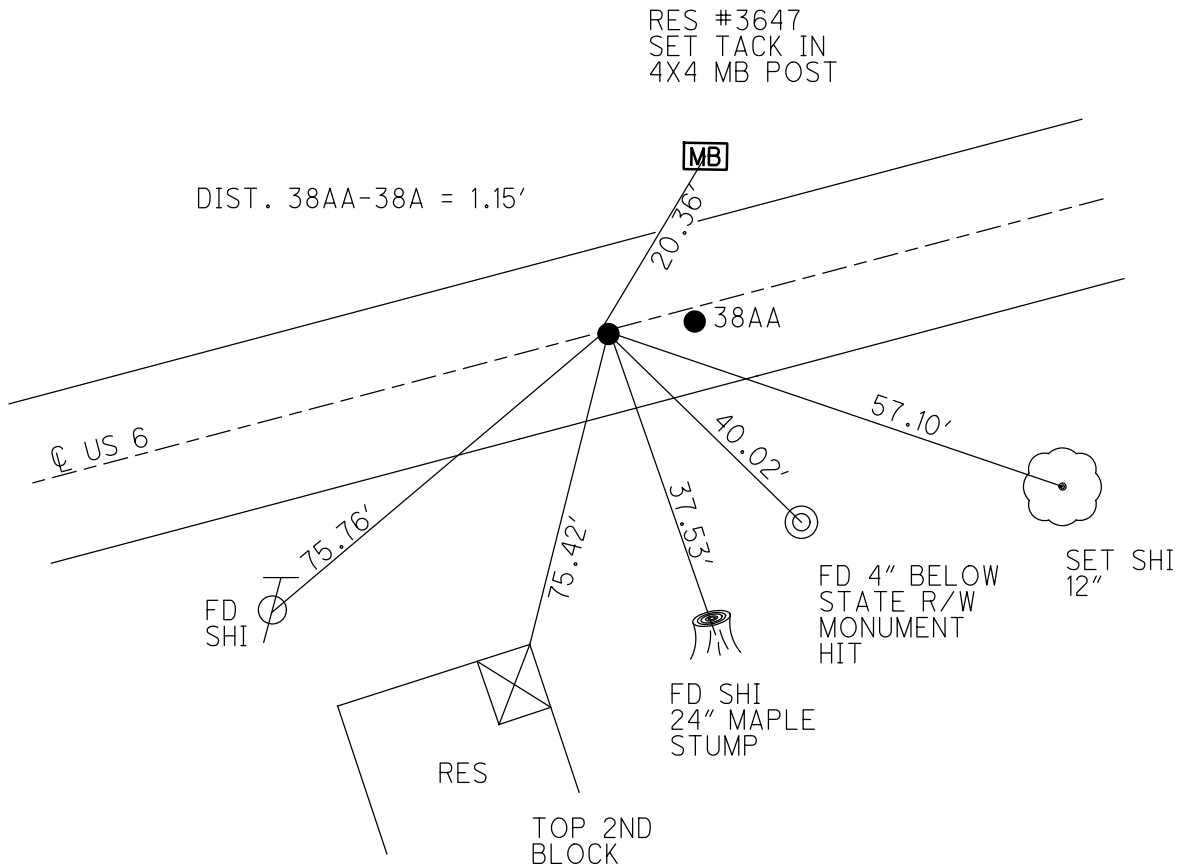
GEOID: 2012A

GRID: NORTHING: 633708.080

EASTING: 1834012.783



RECORD:
 FD MAG NAIL
 REFAA37
 11/22/17, JLL



O.D.O.T. DISTRICT 2 SURVEY OFFICE (USE ONLY)

PERSONNEL

REFERENCE NO. 38 AA

SHEET 4 OF 34

NOTES LEU

DATE 8/1/18

ROUTE US 6

H.C. LEU

WEATHER CLOUDY

COUNTY SANDUSKY

R.C. TRENKA

TEMP. 84°

TOWNSHIP RILEY

SECTION 15

DWG BY AUBLE PID 95769

T 5 N R 16 E

TYPE MONUMENT MAG NAIL

ON SURFACE - ~~BELOW~~ ON

OFFSET \varnothing PAVEMENT ON $\overline{L} : \overline{R}$

11.4' TO RT EDGE PAVEMENT

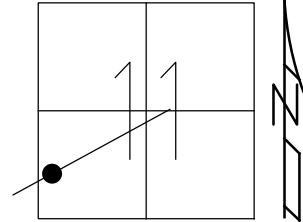
STATION: 1306+95.85

HORZ. DATUM: NAD83 (2011)

GEOID: 2012A

GRID: NORTHING: 633708.080

EASTING: 1834012.783



RECORD:
FD MAG NAIL
REFAA37
11/22/17, JLL

