

O.D.O.T. DISTRICT 2 SURVEY OFFICE (USE ONLY)

PERSONNEL

REFERENCE NO. 38 A

SHEET 5 OF 34

NOTES LEU

DATE 8/1/18

ROUTE US 6

H.C. LEU

WEATHER CLOUDY

COUNTY SANDUSKY

R.C. TRENKA

TEMP. 84°

TOWNSHIP RILEY

SECTION 15

DWG BY AUBLE

PID PAVETRAIN

T 5 N R 16 E

TYPE MONUMENT P.K./WASHER

ON SURFACE - ~~BELOW~~ ON

OFFSET ☉ PAVEMENT ON LT : RT

11.4' TO RT EDGE PAVEMENT

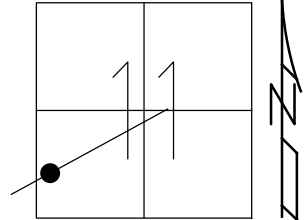
STATION: 1306+97

HORIZ.DATUM: NAD83 (2011)

GEOID: 2012A

GRID: NORTHING: 633708.682

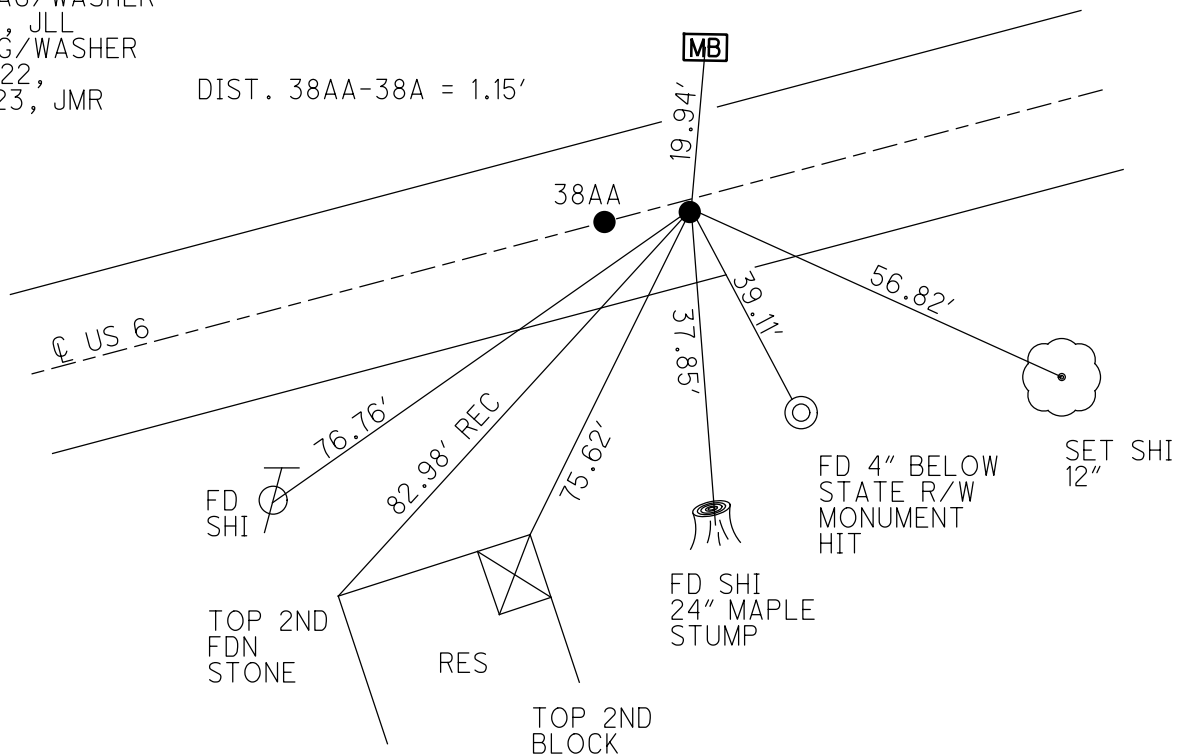
EASTING: 1834013.681



RECORD: P.I.  
 PREVIOUS MONUMENTS:  
 SM SPIKE/WASHER  
 P.K./WASHER  
 STA. 66+29.58  
 FD P.K./WASHER  
 3" DOWN  
 3/16/02, DCH  
 SET P.K./WASHER  
 6/9/02, DCH  
 SET MAG/WASHER  
 8-2-19, JLL  
 FD MAG/WASHER  
 7/20/22,  
 1/20/23, JMR

DIST. 38AA-38A = 1.15'

RES #3647  
 SET TACK IN  
 4X4 MB POST



O.D.O.T. DISTRICT 2 SURVEY OFFICE (USE ONLY)

PERSONNEL

REFERENCE NO. 38 A

SHEET 5 OF 34

NOTES LEU

DATE 8/1/18

ROUTE US 6

H.C. LEU

WEATHER CLOUDY

COUNTY SANDUSKY

R.C. TRENKA

TEMP. 84°

TOWNSHIP RILEY

SECTION 15

DWG BY AUBLE

PID 95769

T 5 N R 16 E

TYPE MONUMENT P.K./WASHER

ON SURFACE - ~~BELOW~~ ON

OFFSET Q PAVEMENT ON ~~LT~~ : ~~RT~~

11.4' TO RT EDGE PAVEMENT

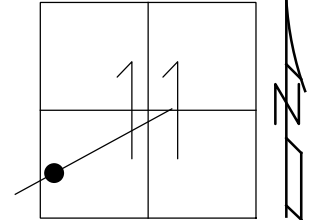
STATION: 1306+97

HORZ.DATUM: NAD83 (2011)

GEOID: 2012A

GRID: NORTHING: 633708.682

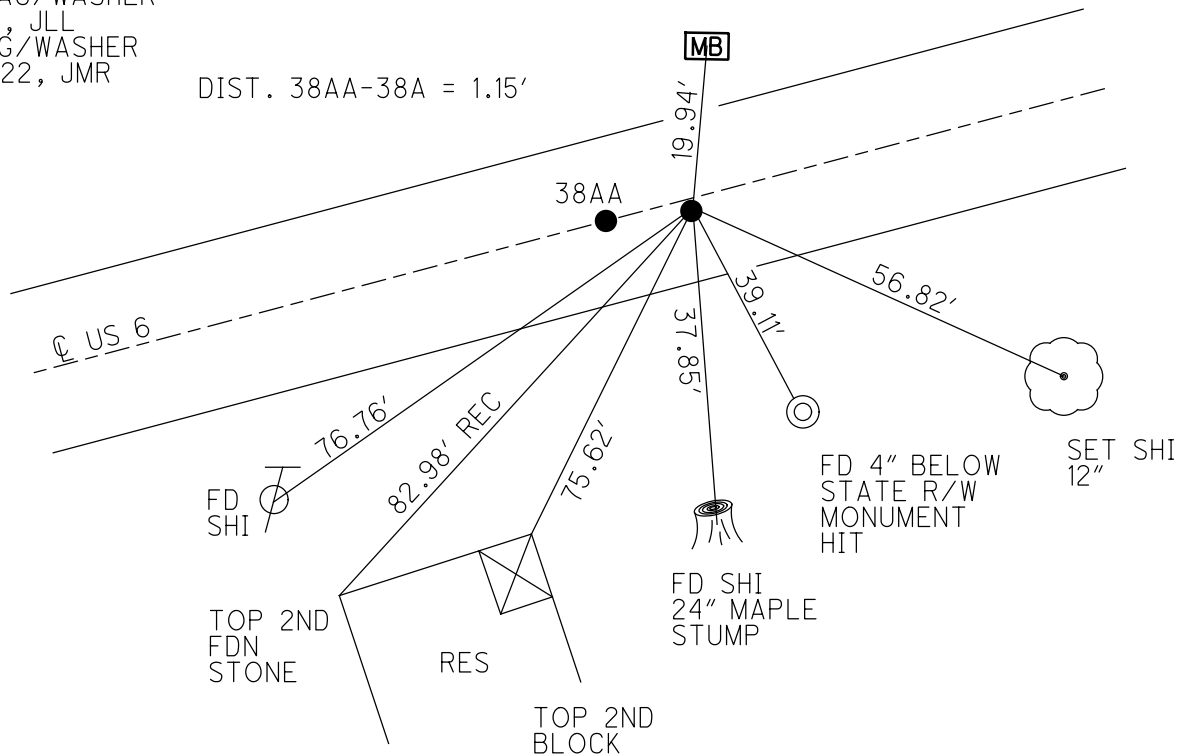
EASTING: 1834013.681



RECORD: P.I.  
 PREVIOUS MONUMENTS:  
 SM SPIKE/WASHER  
 P.K./WASHER  
 STA. 66+29.58  
 FD P.K./WASHER  
 3" DOWN  
 3/16/02, DCH  
 SET P.K./WASHER  
 6/9/02, DCH  
 SET MAG/WASHER  
 8-2-19, JLL  
 FD MAG/WASHER  
 7/20/22, JMR

RES #3647  
 SET TACK IN  
 4X4 MB POST

DIST. 38AA-38A = 1.15'



O.D.O.T. DISTRICT 2 SURVEY OFFICE (USE ONLY)

PERSONNEL \_\_\_\_\_

REFERENCE NO. 38 A

SHEET 5 OF 34

NOTES LEU

DATE 8/1/18

ROUTE US 6

H.C. LEU

WEATHER CLOUDY

COUNTY SANDUSKY

R.C. TRENKA

TEMP. 84°

TOWNSHIP RILEY

SECTION 15

DWG BY AUBLE PID 95769

T 5 N R 16 E

TYPE MONUMENT P.K./WASHER

ON SURFACE - ~~BELOW~~ ON

OFFSET 0 PAVEMENT ON ~~LT~~ : ~~RT~~

11.4' TO RT EDGE PAVEMENT

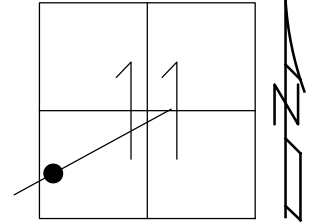
STATION: 1306+97

HORIZ.DATUM: NAD83 (2011)

GEOID: 2012A

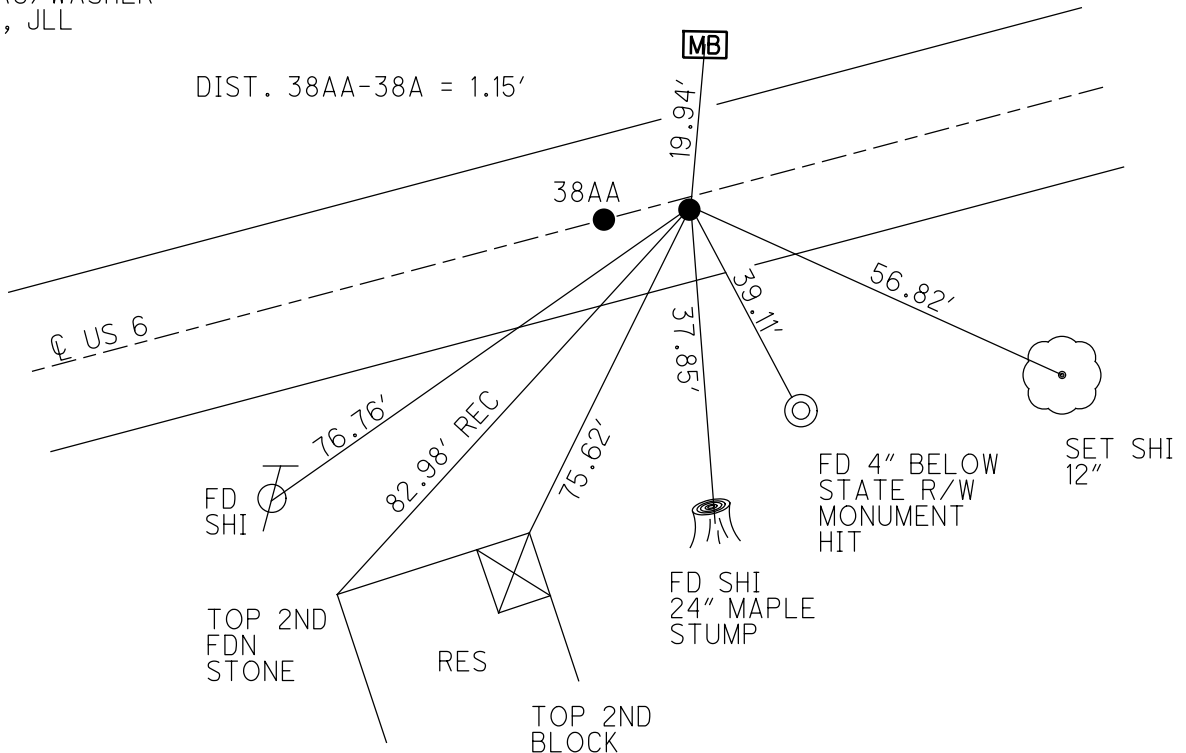
GRID: NORTHING: 633708.682

EASTING: 1834013.681



RECORD: P.I.  
 PREVIOUS MONUMENTS:  
 SM SPIKE/WASHER  
 P.K./WASHER  
 STA. 66+29.58  
 FD P.K./WASHER  
 3" DOWN  
 3/16/02, DCH  
 SET P.K./WASHER  
 6/9/02, DCH  
 SET MAG/WASHER  
 8-2-19, JLL

RES #3647  
 SET TACK IN  
 4X4 MB POST



O.D.O.T. DISTRICT 2 SURVEY OFFICE (USE ONLY)

PERSONNEL	REFERENCE NO. <u>38 A</u>	SHEET <u>5</u> OF <u>34</u>
NOTES <u>LEU</u>	DATE <u>8/1/18</u>	ROUTE <u>US 6</u>
H.C. <u>LEU</u>	WEATHER <u>CLOUDY</u>	COUNTY <u>SANDUSKY</u>
R.C. <u>TRENKA</u>	TEMP. <u>84°</u>	TOWNSHIP <u>RILEY</u>
DWG BY <u>AUBLE</u>	PID <u>95769</u>	SECTION <u>15</u>
		T <u>5</u> N R <u>16</u> E

TYPE MONUMENT P.K./WASHER

ON SURFACE - ~~BELOW~~ ON

OFFSET  $\odot$  PAVEMENT ON ~~LT~~ : ~~RT~~

11.4' TO RT EDGE PAVEMENT

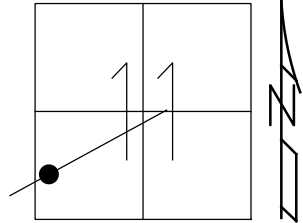
STATION: 1306+97

HORZ.DATUM: NAD83 (2011)

GEOID: 2012A

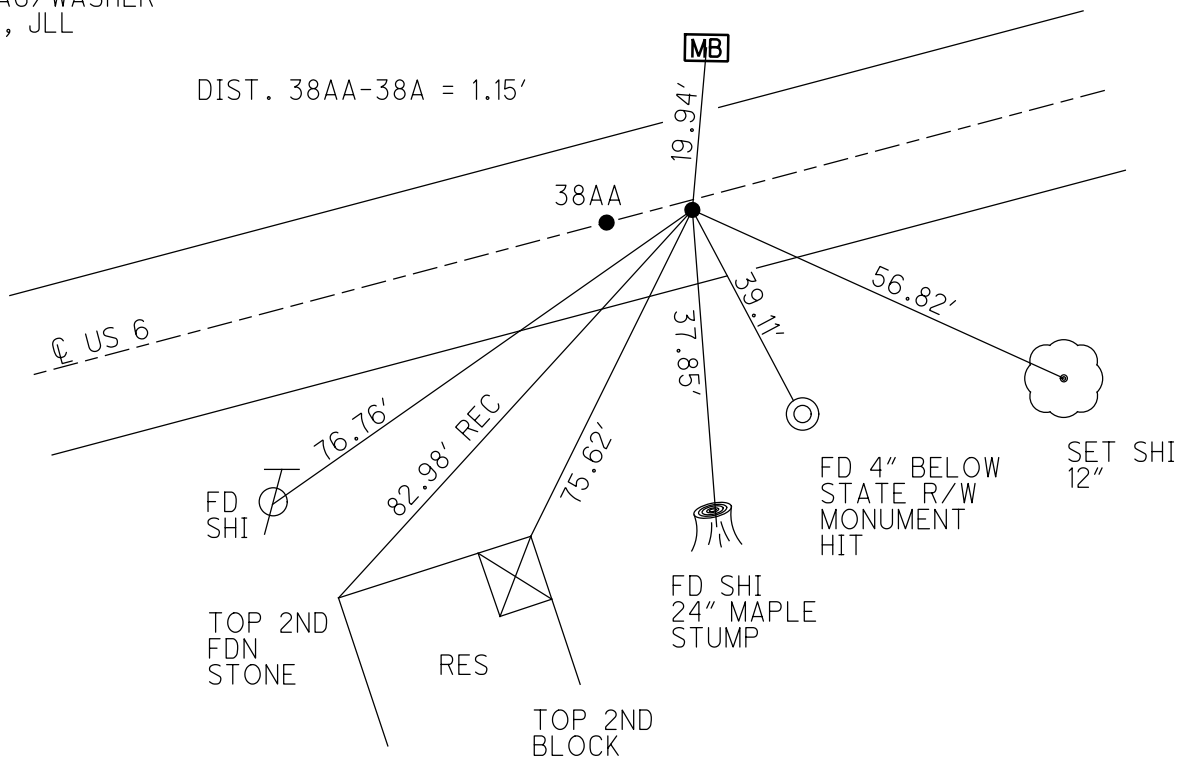
GRID: NORTHING: 633708.682

EASTING: 1834013.681



RECORD: P.I.  
 PREVIOUS MONUMENTS:  
 SM SPIKE/WASHER  
 P.K./WASHER  
 STA. 66+29.58  
 FD P.K./WASHER  
 3" DOWN  
 3/16/02, DCH  
 SET P.K./WASHER  
 6/9/02, DCH  
 SET MAG/WASHER  
 8-2-19, JLL

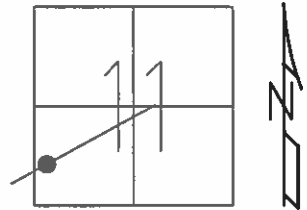
RES #3647  
 SET TACK IN  
 4X4 MB POST



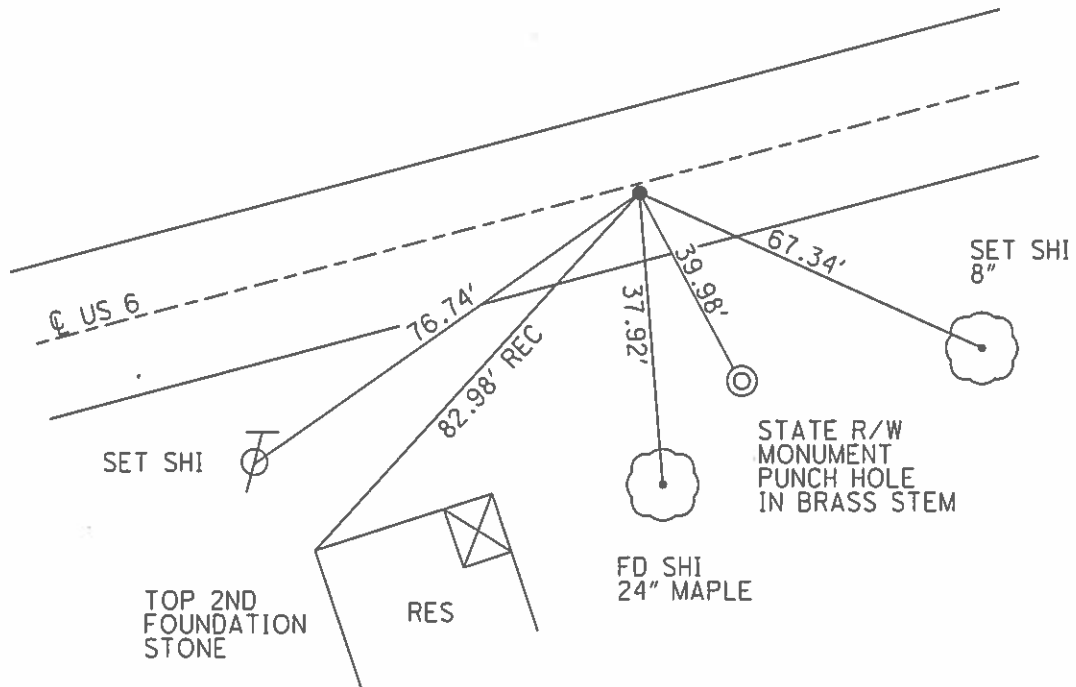
**O.D.O.T. DISTRICT 2 SURVEY OFFICE (USE ONLY)**

PERSONNEL	REFERENCE NO.	38 A	SHEET	4	OF	31
NOTES	ROUSOS	DATE	03/16/02	ROUTE	US 6	
H.C.	VAN DUSEN	WEATHER	WINDY	COUNTY	SANDUSKY	
R.C.	MOSSER	TEMP.	28°	TOWNSHIP	RILEY	
	HOMAN			SECTION	11	
				T	5	N
				R	16	E

TYPE MONUMENT PK/WASHER  
~~ON SURFACE~~ - BELOW 3"  
~~LEFT~~ - CL PAV'T - ~~RIGHT~~ ON  
11.4' TO RT EDGE PAVEMENT  
 S.L.M. 1306+97  
 GRID: NORTHING: - EASTING: -



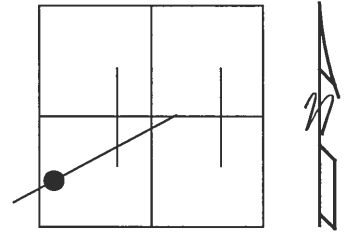
RECORD:  
 PREVIOUS MONUMENTS:  
 SM SPK/WASHER  
 PK/WASHER  
 PI 66+29.58  
 SET PK/WASHER  
 06/09/02 DCH



O.D.O.T. DISTRICT 2 SURVEY OFFICE

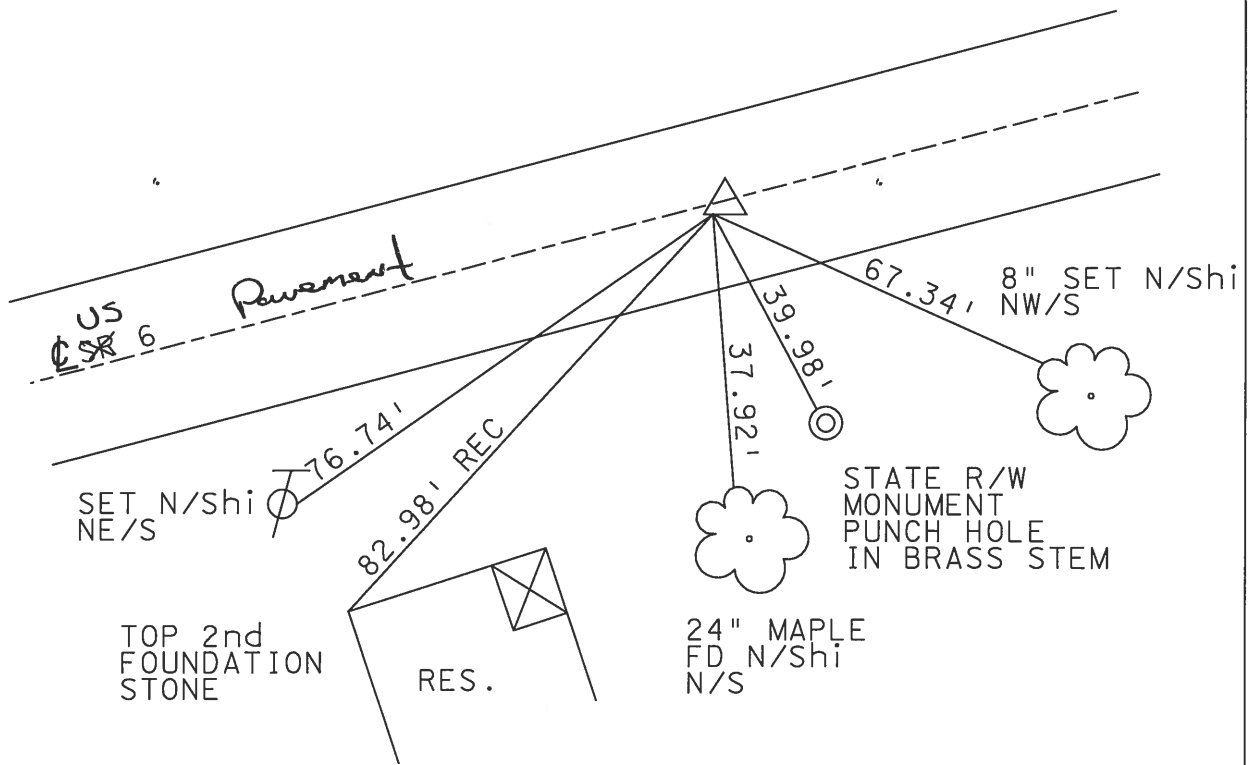
PERSONNEL	REFERENCE NO. <u>38-A</u>	SHEET <u>5</u> OF <u>27</u>
NOTES _____	DATE <u>3/16/02</u>	ROUTE <u>SR 6</u>
H.C. <u>ROUSOS</u>	WEATHER <u>WINDY</u>	COUNTY <u>SANDUSKY</u>
R.C. <u>VAN DUSEN</u>	TEMP. <u>28°</u>	TOWNSHIP <u>RILEY</u>
<u>MOSSER</u>		SECTION <u>11</u>
<u>HOMAN</u>		<u>T5 N R16 E</u>

TYPE MONUMENT \_\_\_\_\_ P.K. WASHER  
~~ON SURFACE~~ - BELOW 3"  
~~LEFT~~ - Q PAV'T - ~~RIGHT~~ ON \_\_\_\_\_  
11.4' ~~TO RT~~ EDGE PAVEMENT  
 S.L.M. \_\_\_\_\_ 1306+97



PREVIOUS MONUMENTS:  
 SM. SPK. / WASHER  
 PK / WASHER  
 P.I. 66+29.58

SET PK AND WASHER  
 6-9-02  
 DCH



O.D.O.T. DISTRICT 2 SURVEY OFFICE

PERSONNEL \_\_\_\_\_

REFERENCE NO. \_\_\_\_\_

SHEET 17 OF 39

NOTES CHENEY

H.C. KIPPLE

R.C. BARBOUR

DATE 9-16-1971

WEATHER SUNNY

TEMP. 85°

ROUTE 6

COUNTY SANDUSKY

TOWNSHIP RILEY

SECTION 11

T5N R16E

TYPE MONUMENT P.K./WASHER

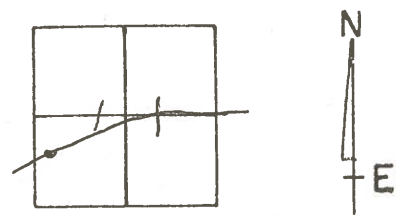
ON SURFACE - ~~BELOW~~ \_\_\_\_\_

~~LEFT~~ - C PAV'T. - ~~RIGHT~~ \_\_\_\_\_

— TO — EDGE PAVEMENT

S.L.M. 1306+97

**38A**

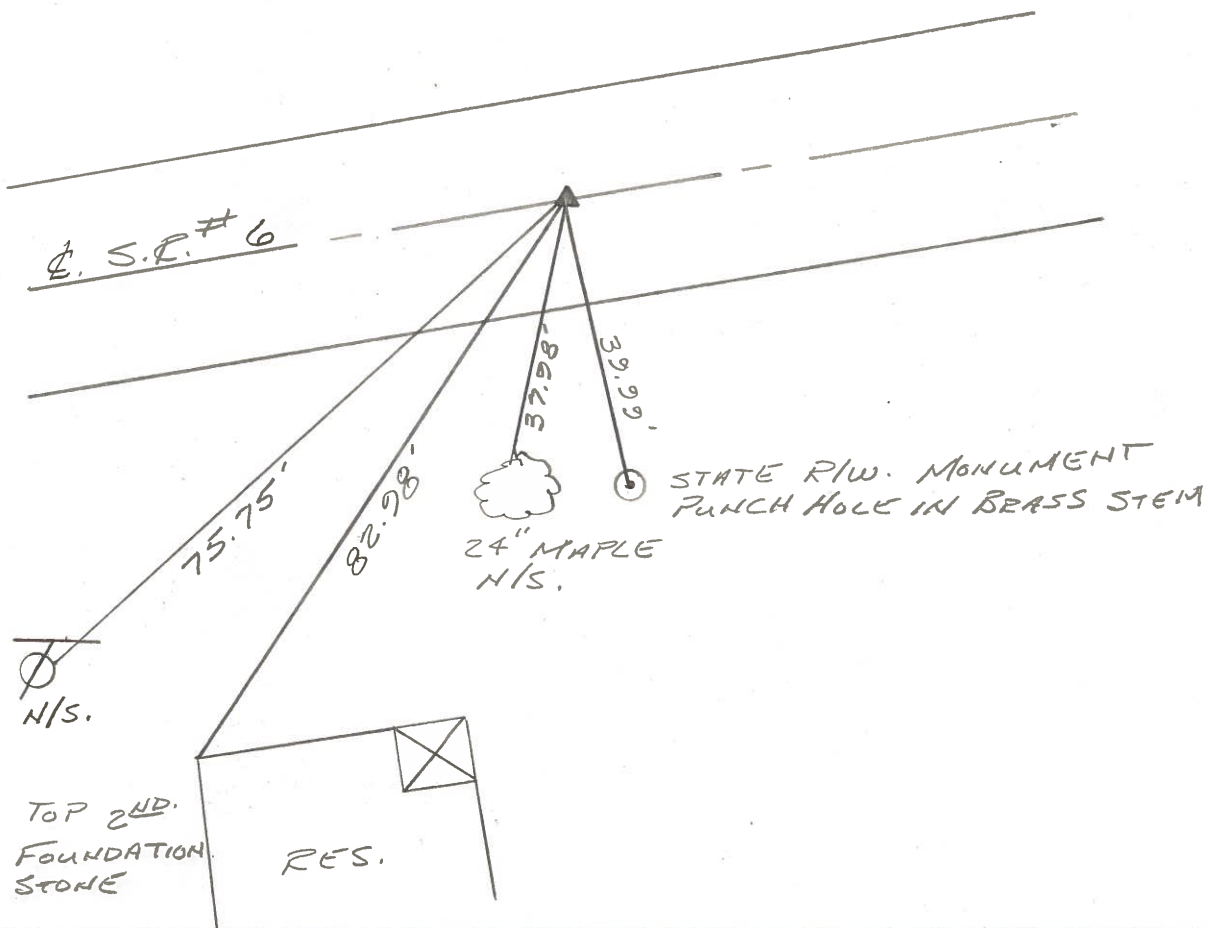


PREVIOUS MONUMENTS:

SM. SPK/WASHER

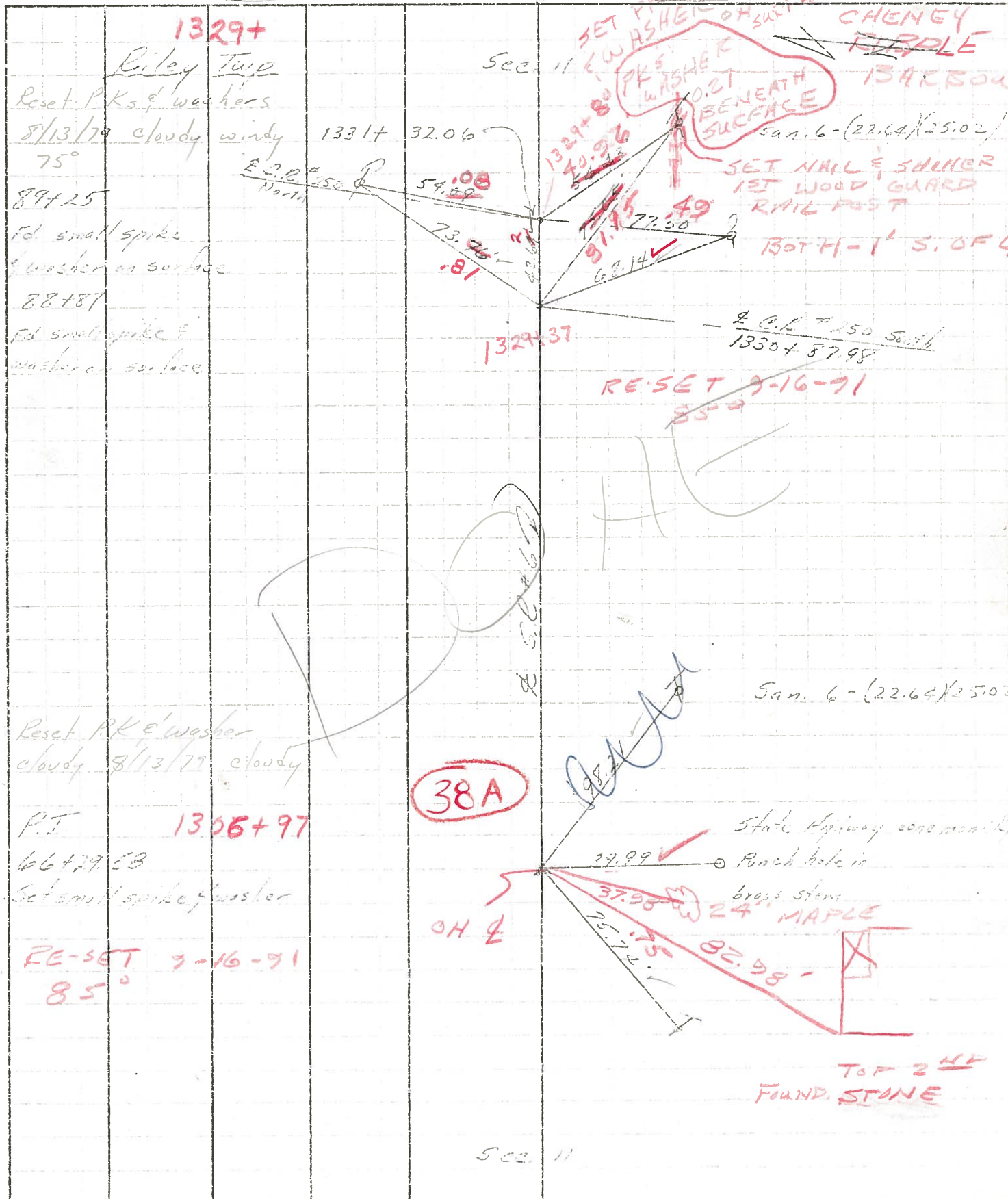
PK/WASHER

P.I. 66+29.58



PERSONNEL	TITLE	PERSONNEL	TITLE	COUNTY	DATE
Cranin		Schneiter		Sandusky	7/29/75
Ash		Masser		S. R. #6	WEATHER sunny
Coyne		Barbour		SEC. I - Fremont - East	TEMP 75°

DESCRIPTION Ties for Control Points JOB NO. \_\_\_\_\_



1329+  
Riley Twp  
Reset P. Ks. & washers  
8/13/79 cloudy windy  
75°  
89+25  
Fd. small spike  
& washer on surface  
88+87  
Fd. small spike &  
washer on surface

Reset PK & washer  
cloudy 8/13/79 cloudy  
P.T. 1306+97  
66+29.58  
Set small spike & washer  
RE-SET 9-16-91  
85°

38A

Sec. 11



PERSONNEL	TITLE	PERSONNEL	TITLE	COUNTY	DATE	S. R.	WEATHER	TEMP.
Cronin		Schneider		Sandusky	7/29/75	#6	sunny	75°
Ash		Mosser						
Geyman		Barbour						

DESCRIPTION Ties for Control Points JOB NO. \_\_\_\_\_

