

O.D.O.T. DISTRICT 2 SURVEY OFFICE (USE ONLY)

PERSONNEL

REFERENCE NO. 39

SHEET 6 OF 34

NOTES MILLER

DATE 12/28/23

ROUTE US 6

H.C. RHOADES

WEATHER RAIN

COUNTY SANDUSKY

R.C. MILLER

TEMP. 44°

TOWNSHIP RILEY

SECTION 11

DWG BY MILLER

PID PAVETRAIN

T 5 N R 16 E

TYPE MONUMENT MAG/WASHER

ON SURFACE - ~~BELOW~~ ON

OFFSET  $\text{C}$  PAVEMENT 1.6' ~~LT~~ : RT

12.7' TO LT EDGE PAVEMENT

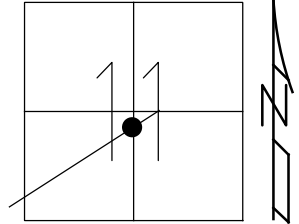
STATION: 1329+37

HORIZ.DATUM: NAD83 (2011)

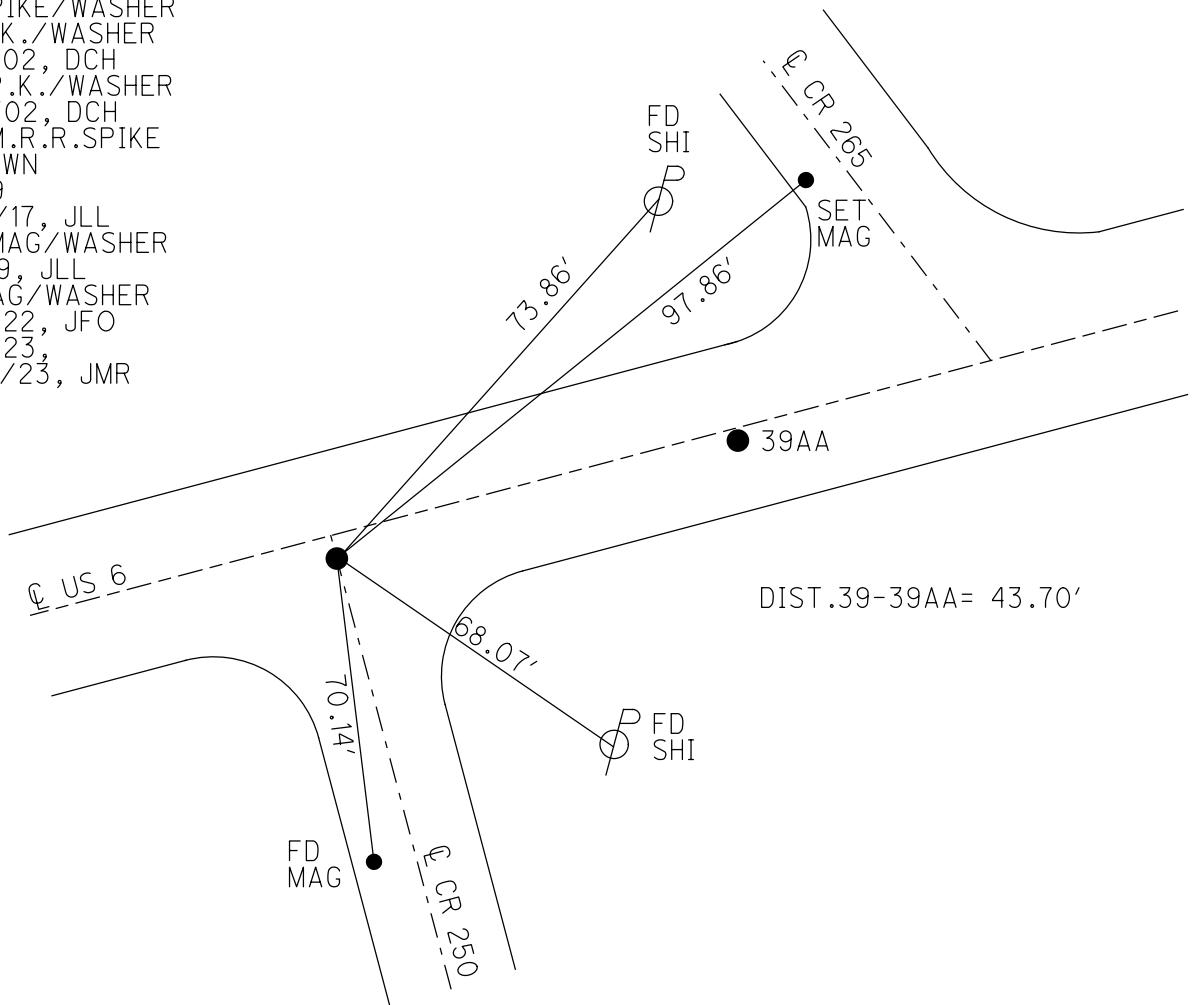
GEOID: NAVD88 2018

GRID: NORTHING: 634615.966

EASTING: 1836069.682



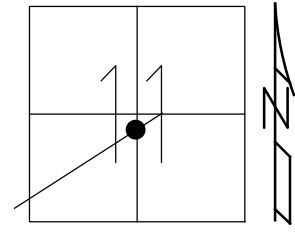
RECORD:  
 STA.88+87  
 SM.SPIKE/WASHER  
 FD P.K./WASHER  
 3/16/02, DCH  
 SET P.K./WASHER  
 6/10/02, DCH  
 FD SM.R.R.SPIKE  
 4" DOWN  
 REF39  
 11/22/17, JLL  
 SET MAG/WASHER  
 8-2-19, JLL  
 FD MAG/WASHER  
 2/10/22, JFO  
 1/20/23,  
 12/28/23, JMR



O.D.O.T. DISTRICT 2 SURVEY OFFICE (USE ONLY)

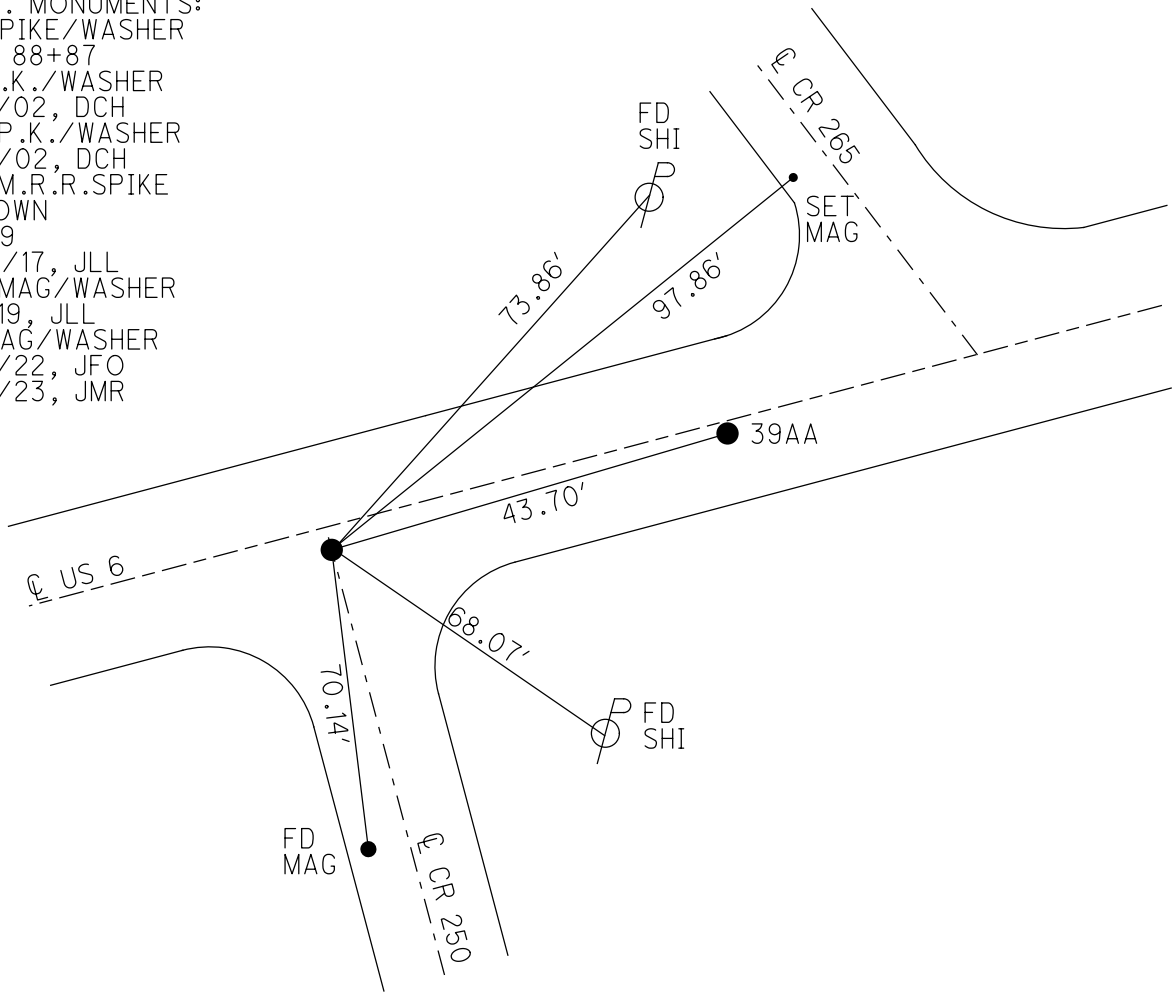
PERSONNEL \_\_\_\_\_ REFERENCE NO. 39 SHEET 6 OF 34  
 NOTES LEU DATE 8/1/18 ROUTE US 6  
 H.C. LEU WEATHER CLOUDY COUNTY SANDUSKY  
 R.C. TRENKA TEMP. 73° TOWNSHIP RILEY  
 DWG BY AUBLE PID PAVETRAIN SECTION 11  
 T 5 N R 16 E

TYPE MONUMENT SM.R.R.SPIKE  
 ON SURFACE - ~~BELOW~~ ON  
 OFFSET Q PAVEMENT 1.6' ~~RT~~ : RT  
12.7' TO LT EDGE PAVEMENT  
 STATION: 1329.37



HORZ.DATUM: NAD83 (2011) GEOID: 2012A  
 GRID: NORTHING: 634615.966 EASTING: 1836069.682

RECORD:  
 PREV. MONUMENTS:  
 SM SPIKE/WASHER  
 STA. 88+87  
 FD P.K./WASHER  
 3/16/02, DCH  
 SET P.K./WASHER  
 6/10/02, DCH  
 FD SM.R.R.SPIKE  
 4" DOWN  
 REF39  
 11/22/17, JLL  
 SET MAG/WASHER  
 8-2-19, JLL  
 FD MAG/WASHER  
 2/10/22, JFO  
 1/20/23, JMR



O.D.O.T. DISTRICT 2 SURVEY OFFICE (USE ONLY)

PERSONNEL

REFERENCE NO. 39

SHEET 6 OF 34

NOTES LEU  
 H.C. LEU  
 R.C. TRENKA

DATE 8/1/18  
 WEATHER CLOUDY  
 TEMP. 73°

ROUTE US 6  
 COUNTY SANDUSKY  
 TOWNSHIP RILEY  
 SECTION 11  
 T 5 N R 16 E

DWG BY AUBLE PID 95769

TYPE MONUMENT SM.R.R.SPIKE

ON SURFACE - ~~BELOW~~ ON

OFFSET  $\odot$  PAVEMENT 1.6' ~~LT~~ : RT  
12.7' TO LT EDGE PAVEMENT

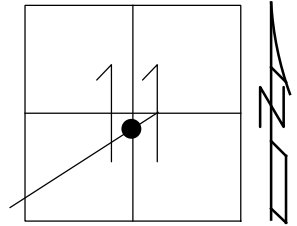
STATION: 1329.37

HORZ.DATUM: NAD83 (2011)

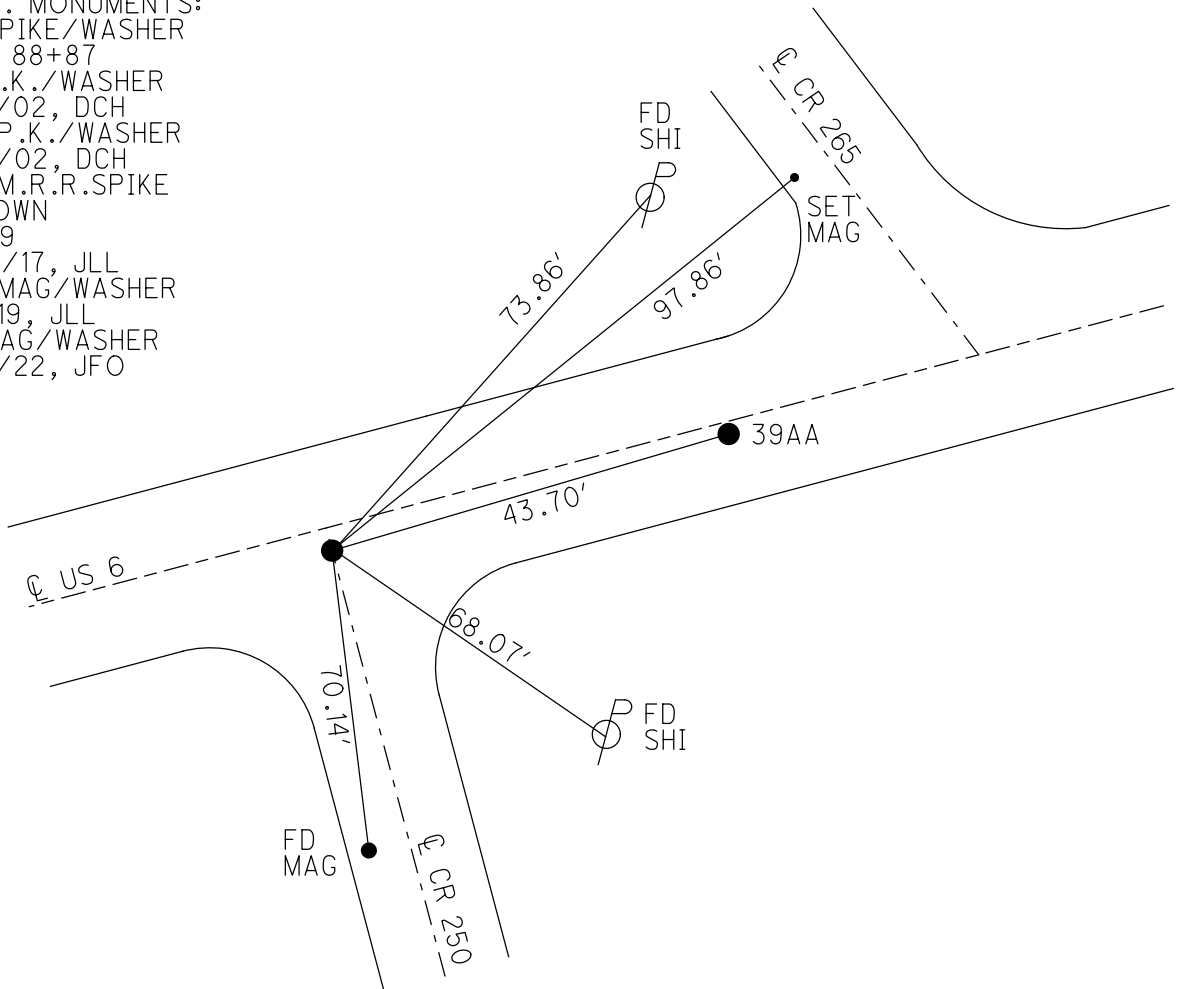
GEOID: 2012A

GRID: NORTHING: 634615.966

EASTING: 1836069.682



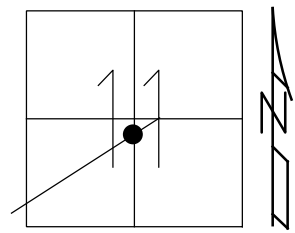
RECORD:  
 PREV. MONUMENTS:  
 SM SPIKE/WASHER  
 STA. 88+87  
 FD P.K./WASHER  
 3/16/02, DCH  
 SET P.K./WASHER  
 6/10/02, DCH  
 FD SM.R.R.SPIKE  
 4" DOWN  
 REF39  
 11/22/17, JLL  
 SET MAG/WASHER  
 8-2-19, JLL  
 FD MAG/WASHER  
 2/10/22, JFO



O.D.O.T. DISTRICT 2 SURVEY OFFICE (USE ONLY)

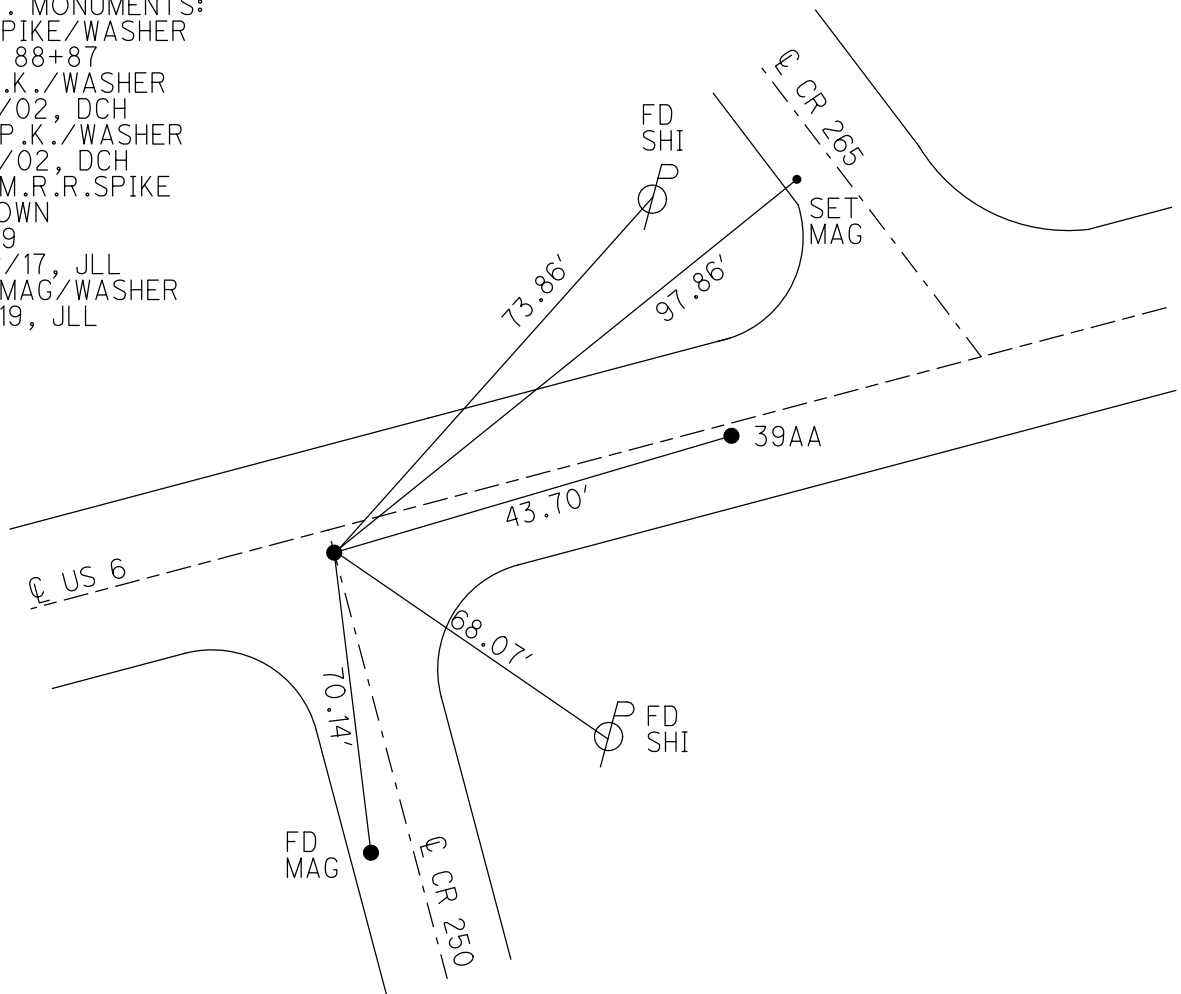
PERSONNEL	REFERENCE NO. <u>39</u>	SHEET <u>6</u> OF <u>34</u>
NOTES <u>LEU</u>	DATE <u>8/1/18</u>	ROUTE <u>US 6</u>
H.C. <u>LEU</u>	WEATHER <u>CLOUDY</u>	COUNTY <u>SANDUSKY</u>
R.C. <u>TRENKA</u>	TEMP. <u>73°</u>	TOWNSHIP <u>RILEY</u>
DWG BY <u>AUBLE</u>	PID <u>95769</u>	SECTION <u>11</u>
		<u>T 5 N R 16 E</u>

TYPE MONUMENT SM.R.R.SPIKE  
 ON SURFACE - ~~BELOW~~ ON  
 OFFSET  $\odot$  PAVEMENT 1.6' ~~RT~~ : RT  
12.7' TO LT EDGE PAVEMENT  
 STATION: 1329.37



HORZ.DATUM: NAD83 (2011)      GEOID: 2012A  
 GRID: NORTHING: 634615.966      EASTING: 1836069.682

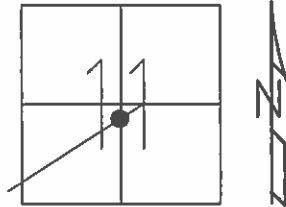
RECORD:  
 PREV. MONUMENTS:  
 SM SPIKE/WASHER  
 STA. 88+87  
 FD P.K./WASHER  
 3/16/02, DCH  
 SET P.K./WASHER  
 6/10/02, DCH  
 FD SM.R.R.SPIKE  
 4" DOWN  
 REF39  
 11/22/17, JLL  
 SET MAG/WASHER  
 8-2-19, JLL



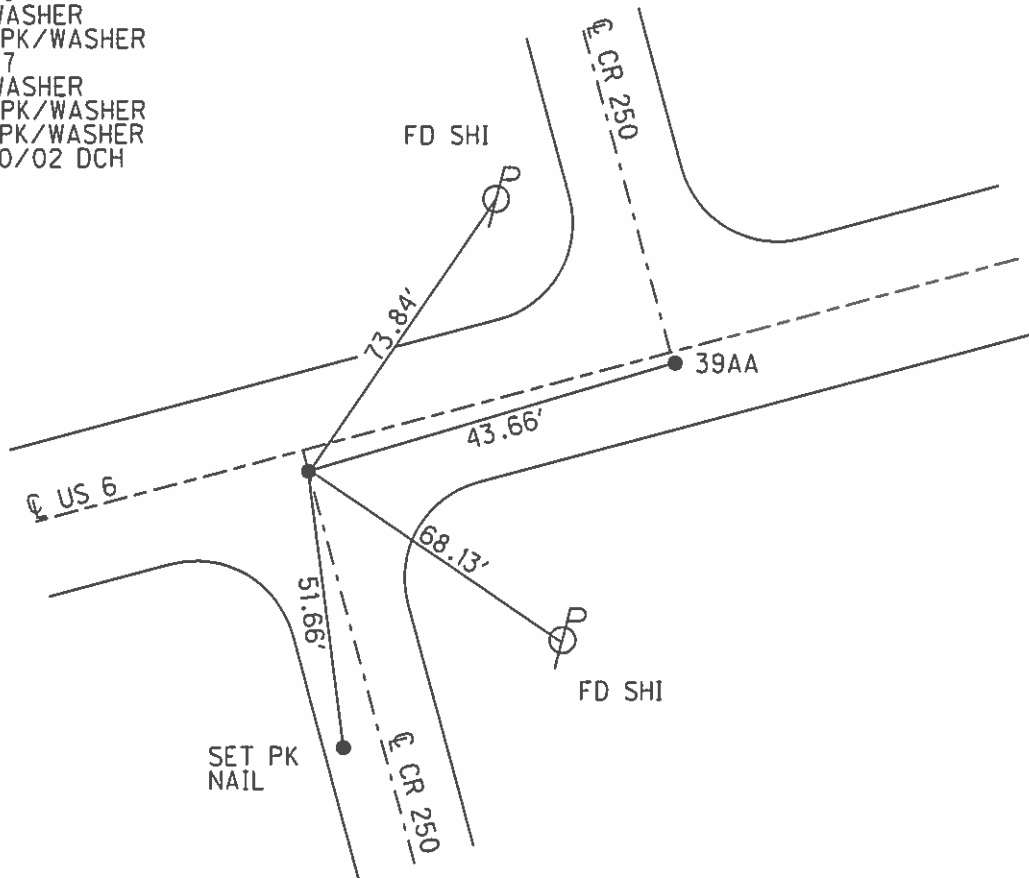
**O.D.O.T. DISTRICT 2 SURVEY OFFICE (USE ONLY)**

PERSONNEL	REFERENCE NO.	<u>39</u>	SHEET	<u>5</u>	OF	<u>31</u>
NOTES	<u>ROUSOS</u>	DATE	<u>03/16/02</u>	ROUTE	<u>US 6</u>	
H.C.	<u>VAN DUSEN</u>	WEATHER	<u>WINDY</u>	COUNTY	<u>SANDUSKY</u>	
R.C.	<u>MOSSER</u>	TEMP.	<u>28°</u>	TOWNSHIP	<u>RILEY</u>	
	<u>HOMAN</u>			SECTION	<u>11</u>	
				T	<u>5</u>	R
				N	<u>16</u>	E

TYPE MONUMENT PK/WASHER  
 ON SURFACE - ~~BELOW~~ ON  
~~LEFT~~ - ☉ PAV'T - RIGHT 1'  
12.7' TO LT EDGE PAVEMENT  
 S.L.M. 1329+37  
 GRID: NORTHING: - EASTING: -



RECORD:  
 PREVIOUS STATIONS & MONUMENTS:  
 89+25  
 PK/WASHER  
 SM SPK/WASHER  
 88+87  
 PK/WASHER  
 SM SPK/WASHER  
 SET PK/WASHER  
 06/10/02 DCH



O.D.O.T. DISTRICT 2 SURVEY OFFICE

PERSONNEL

REFERENCE NO. 39

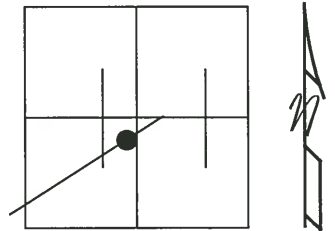
SHEET 6 OF 27

NOTES ROUSOS  
 H.C. VAN DUSEN  
 R.C. MOSSER  
HOMAN

DATE 3/16/02  
 WEATHER WINDY  
 TEMP. 28°

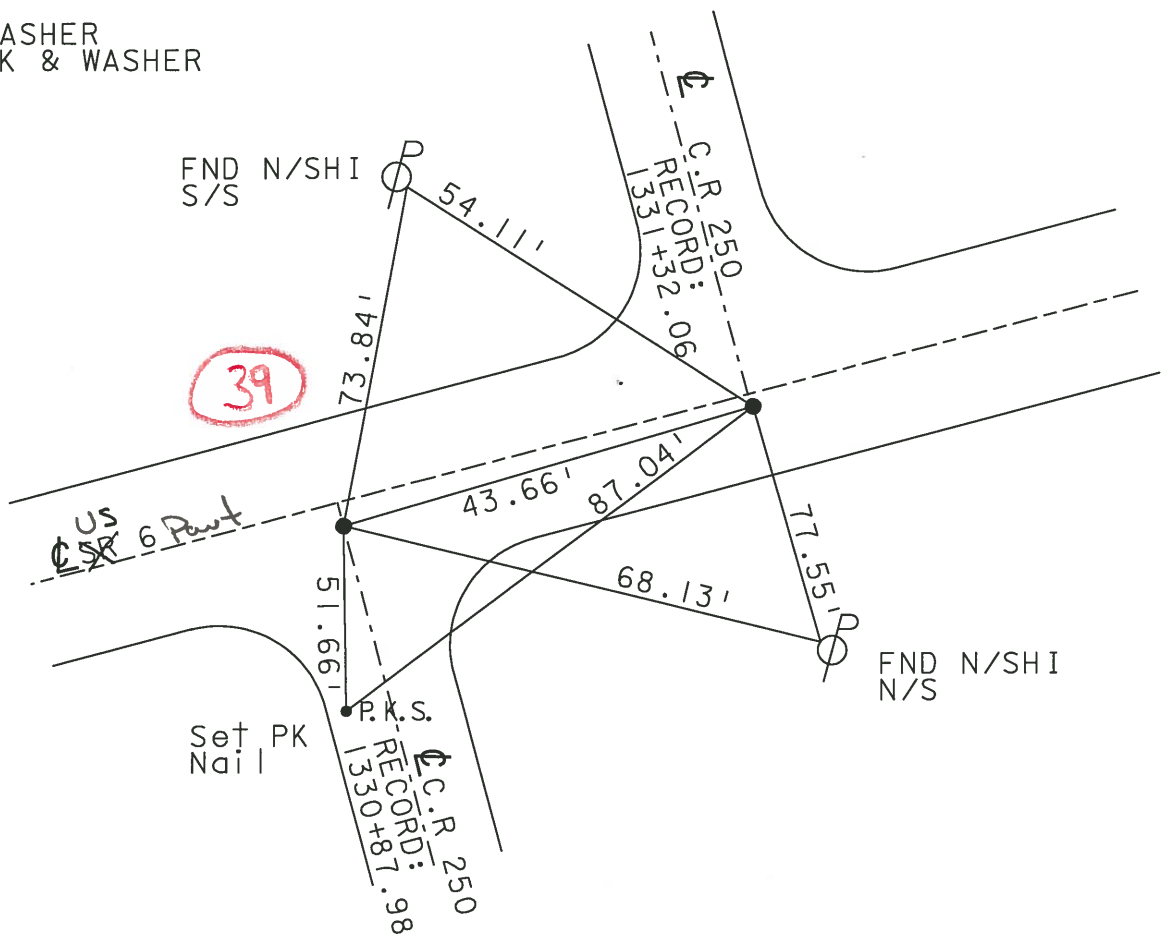
ROUTE SR 6  
 COUNTY SANDUSKY  
 TOWNSHIP RILEY  
 SECTION 11  
T5 N R16 E

TYPE MONUMENT P.K. WASHER  
 ON SURFACE - ~~BELOW~~ ON \_\_\_\_\_  
~~LEFT~~ - Q PAV'T - RIGHT BOTH 1'  
 TO \_\_\_\_\_ EDGE PAVEMENT A 12.7' TO LT EDGE  
 B 13.0' TO LT EDGE  
 S.L.M. \_\_\_\_\_ A 1329+37 B 1329+80



PREVIOUS STATIONS & MONUMENTS:  
 89+25  
 PK & WASHER  
 SM. SPK & WASHER  
 88+87  
 PK & WASHER  
 SM. SPK & WASHER

SET PK'S AND WASHER'S  
 6-10-02  
 DCH



# O.D.O.T. DISTRICT 2 SURVEY OFFICE

PERSONNEL \_\_\_\_\_

REFERENCE NO. 39

SHEET 18 OF 39

NOTES CHENEY

H.C. FIPPLE

R.C. BARBOUR

DATE 9-16-1991

WEATHER SUNNY

TEMP. 85°

ROUTE 6

COUNTY SANDUSKY

TOWNSHIP PILEY

SECTION 11

T5N R16E

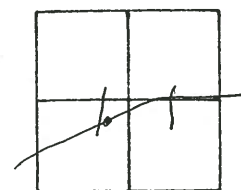
TYPE MONUMENT PKs/WASHERS

ON SURFACE - ~~BELOW~~ \_\_\_\_\_

~~LEFT - & PAV'T. - RIGHT~~ BOTH - 1'

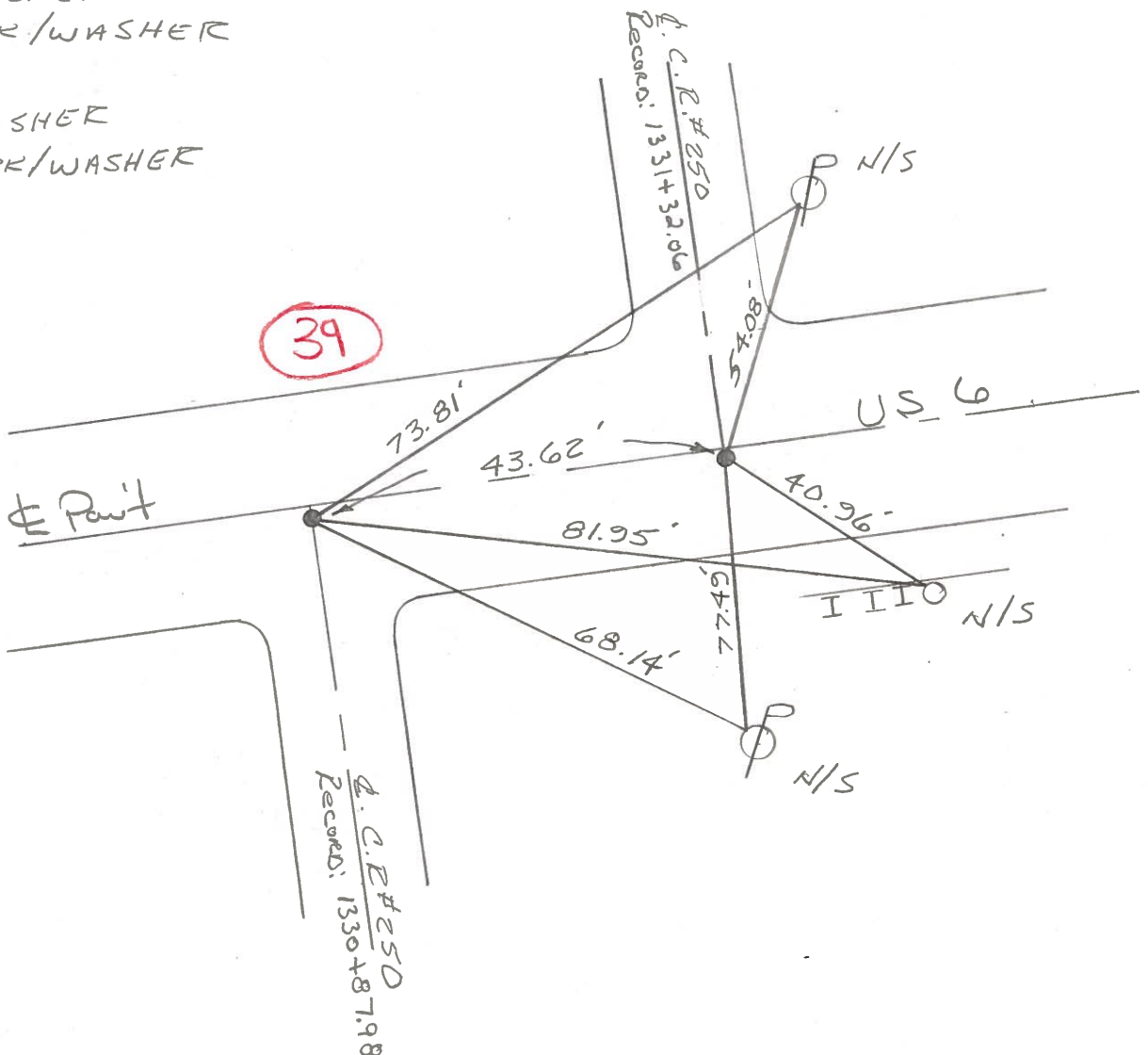
TO ~~EDGE~~ PAVEMENT

S.L.M. 1229+37 & 1229+80



PREVIOUS STATIONS & MONUMENTS:

- 89+25  
PK/WASHER  
SM. SPK/WASHER
- 88+87  
PK/WASHER  
SM. SPK/WASHER



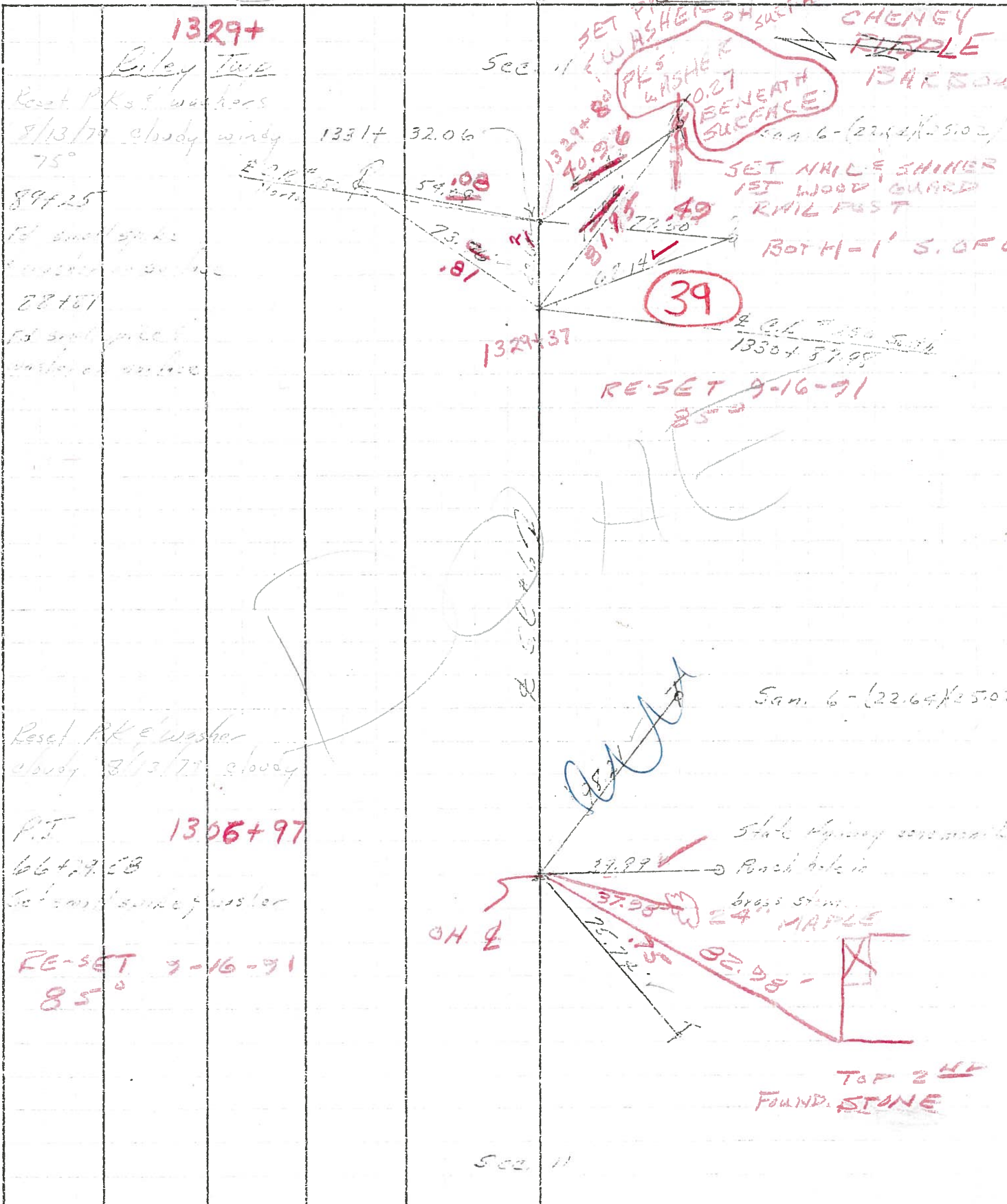
PERSONNEL	TITLE	PERSONNEL	TITLE
<u>Cravin</u>		<u>Schneider</u>	
<u>Asch</u>		<u>Masser</u>	
<u>Cozzano</u>		<u>Barbour</u>	

COUNTY Sandusky DATE 7/29/75

S. R. #6 WEATHER sunny

SEC. I - Fremont East TEMP. 75°

DESCRIPTION Ties for Central Pointe JOB NO. \_\_\_\_\_





PERSONNEL	TITLE	PERSONNEL	TITLE
Cronin		Schneider	
Ash		Mosser	
Geyman		Barbour	

COUNTY Sandusky DATE 7/29/75

S. R. #6 WEATHER sunny

SEC. I - Fremont - East TEMP. 75°

DESCRIPTION Ties for Control Points

JOB NO.

