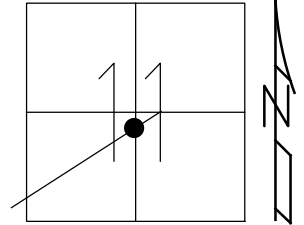


O.D.O.T. DISTRICT 2 SURVEY OFFICE (USE ONLY)

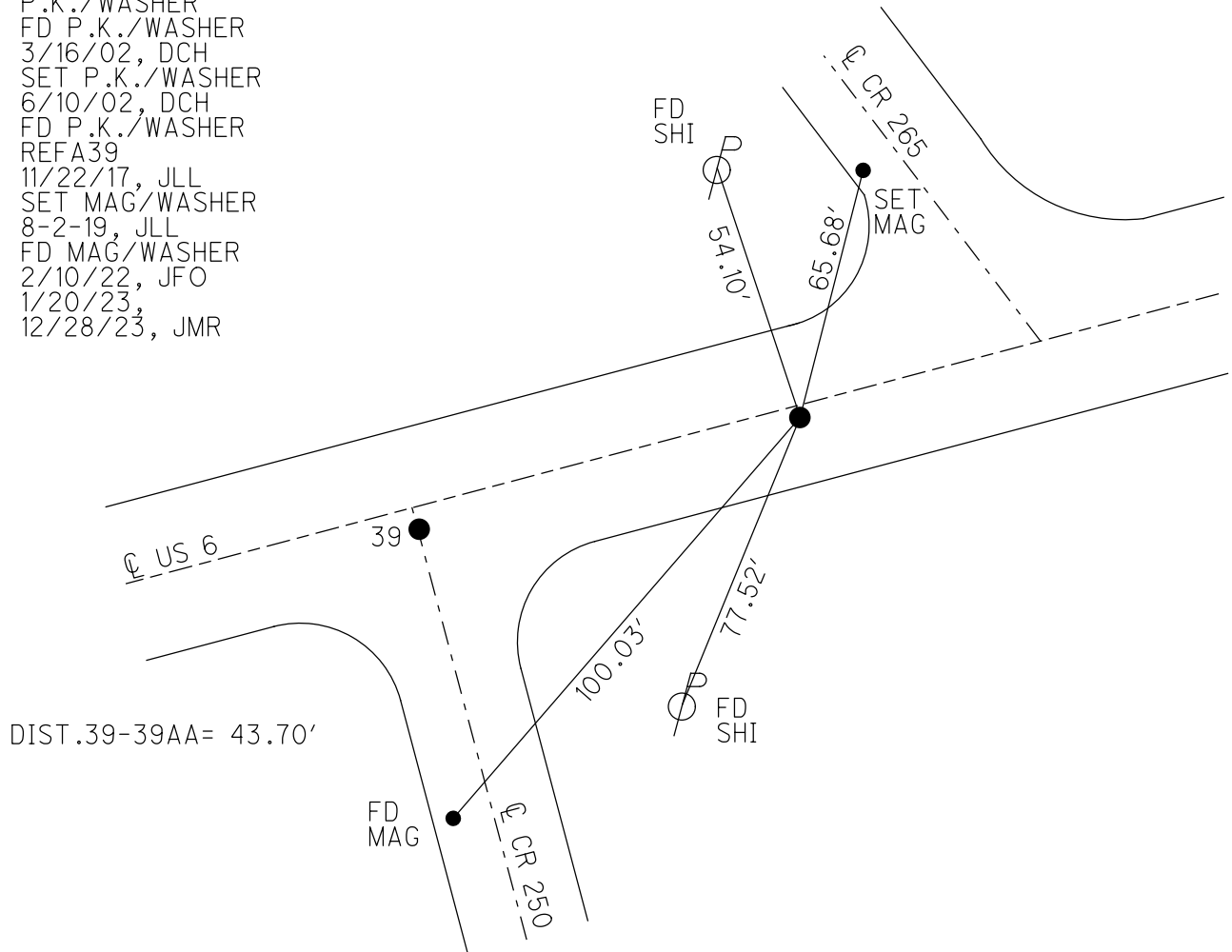
PERSONNEL	REFERENCE NO. <u>39 AA</u>	SHEET <u>7</u> OF <u>34</u>
NOTES <u>MILLER</u>	DATE <u>12/28/23</u>	ROUTE <u>US 6</u>
H.C. <u>RHOADES</u>	WEATHER <u>RAIN</u>	COUNTY <u>SANDUSKY</u>
R.C. <u>MILLER</u>	TEMP. <u>44°</u>	TOWNSHIP <u>RILEY</u>
DWG BY <u>RHOADES</u>	PID <u>PAVETRAIN</u>	SECTION <u>11</u>
		T <u>5</u> N R <u>16</u> E

TYPE MONUMENT MAG/WASHER  
 ON SURFACE - ~~BELOW~~ ON  
 OFFSET  $\odot$  PAVEMENT 1.5' ~~LT~~ : RT  
13.0' TO LT EDGE PAVEMENT  
 STATION: 1329+80



HORZ.DATUM: NAD83 (2011) GEOID: NAVD88 2018  
 GRID: NORTHING: 634633.565 EASTING: 1836109.668

RECORD:  
 STA.89+25  
 P.K./WASHER  
 FD P.K./WASHER  
 3/16/02, DCH  
 SET P.K./WASHER  
 6/10/02, DCH  
 FD P.K./WASHER  
 REFA39  
 11/22/17, JLL  
 SET MAG/WASHER  
 8-2-19, JLL  
 FD MAG/WASHER  
 2/10/22, JFO  
 1/20/23,  
 12/28/23, JMR

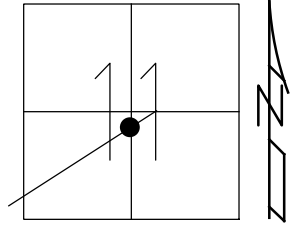


O.D.O.T. DISTRICT 2 SURVEY OFFICE (USE ONLY)

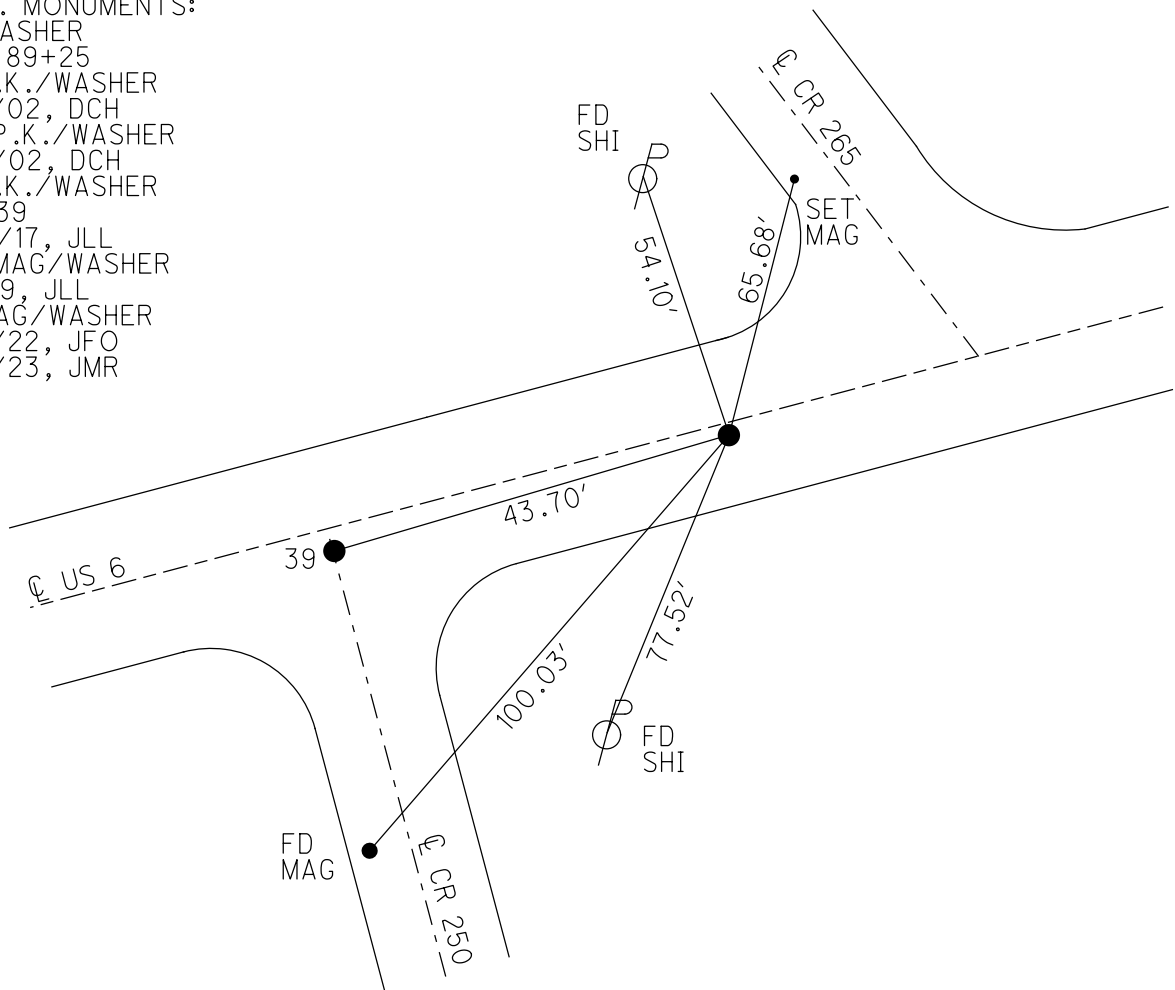
PERSONNEL \_\_\_\_\_ REFERENCE NO. 39 AA SHEET 7 OF 34  
 NOTES LEU DATE 8/1/18 ROUTE US 6  
 H.C. LEU WEATHER CLOUDY COUNTY SANDUSKY  
 R.C. TRENKA TEMP. 73° TOWNSHIP RILEY  
 DWG BY AUBLE PID PAVETRAN SECTION 11  
 T 5 N R 16 E

TYPE MONUMENT P.K./WASHER  
 ON SURFACE - ~~BELOW~~ ON  
 OFFSET  $\odot$  PAVEMENT 1.5' ~~LT~~ : RT  
13.0' TO LT EDGE PAVEMENT  
 STATION: 1329+80

HORIZ.DATUM: NAD83 (2011) GEOID: 2012A  
 GRID: NORTHING: 634633.565 EASTING: 1836109.668



RECORD:  
 PREV. MONUMENTS:  
 PK/WASHER  
 STA. 89+25  
 FD P.K./WASHER  
 3/16/02, DCH  
 SET P.K./WASHER  
 6/10/02, DCH  
 FD P.K./WASHER  
 REFA39  
 11/22/17, JLL  
 SET MAG/WASHER  
 8-2-19, JLL  
 FD MAG/WASHER  
 2/10/22, JFO  
 1/20/23, JMR

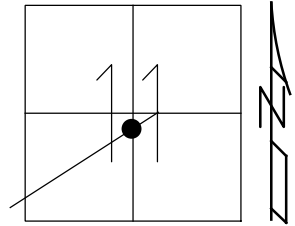


O.D.O.T. DISTRICT 2 SURVEY OFFICE (USE ONLY)

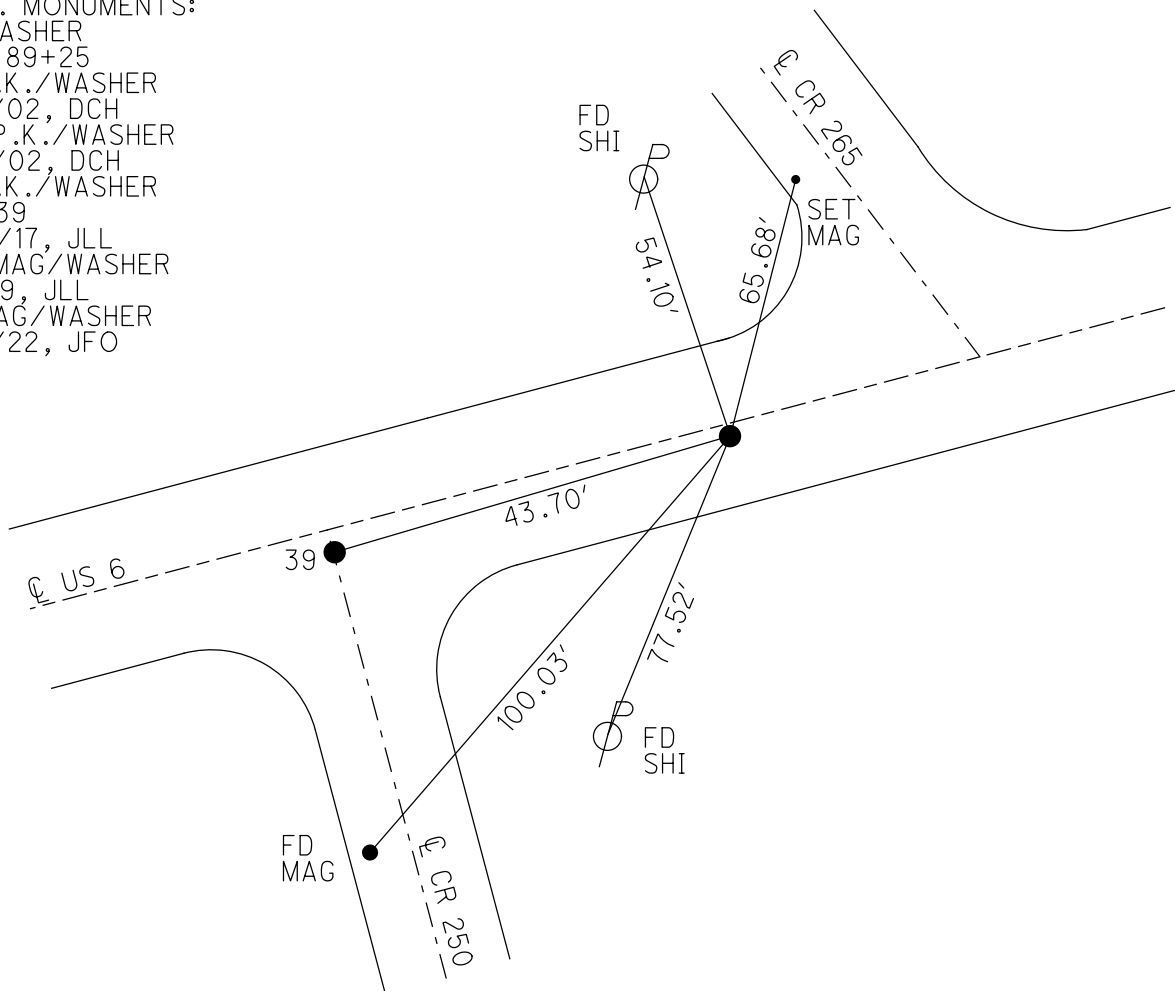
PERSONNEL	REFERENCE NO. <u>39 AA</u>	SHEET <u>7</u> OF <u>34</u>
NOTES <u>LEU</u>	DATE <u>8/1/18</u>	ROUTE <u>US 6</u>
H.C. <u>LEU</u>	WEATHER <u>CLOUDY</u>	COUNTY <u>SANDUSKY</u>
R.C. <u>TRENKA</u>	TEMP. <u>73°</u>	TOWNSHIP <u>RILEY</u>
DWG BY <u>AUBLE</u>	PID <u>95769</u>	SECTION <u>11</u>
		T <u>5</u> N R <u>16</u> E

TYPE MONUMENT P.K./WASHER  
 ON SURFACE - ~~BELOW~~ ON  
 OFFSET  $\varnothing$  PAVEMENT 1.5' LT : RT  
13.0' TO LT EDGE PAVEMENT  
 STATION: 1329+80

HORIZ.DATUM: NAD83 (2011) GEOID: 2012A  
 GRID: NORTHING: 634633.565 EASTING: 1836109.668



RECORD:  
 PREV. MONUMENTS:  
 PK/WASHER  
 STA. 89+25  
 FD P.K./WASHER  
 3/16/02, DCH  
 SET P.K./WASHER  
 6/10/02, DCH  
 FD P.K./WASHER  
 REFA39  
 11/22/17, JLL  
 SET MAG/WASHER  
 8-2-19, JLL  
 FD MAG/WASHER  
 2/10/22, JFO



O.D.O.T. DISTRICT 2 SURVEY OFFICE (USE ONLY)

PERSONNEL

REFERENCE NO. 39 AA

SHEET 7 OF 34

NOTES LEU  
 H.C. LEU  
 R.C. TRENKA

DATE 8/1/18  
 WEATHER CLOUDY  
 TEMP. 73°

ROUTE US 6  
 COUNTY SANDUSKY  
 TOWNSHIP RILEY  
 SECTION 11  
 T 5 N R 16 E

DWG BY AUBLE PID 95769

TYPE MONUMENT P.K./WASHER

ON SURFACE - ~~BELOW~~ ON

OFFSET Q PAVEMENT 1.5' ~~LT~~ : RT  
13.0' TO LT EDGE PAVEMENT

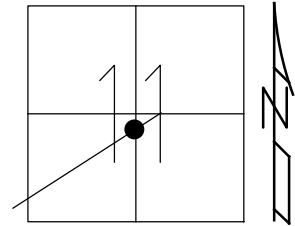
STATION: 1329+80

HORIZ.DATUM: NAD83 (2011)

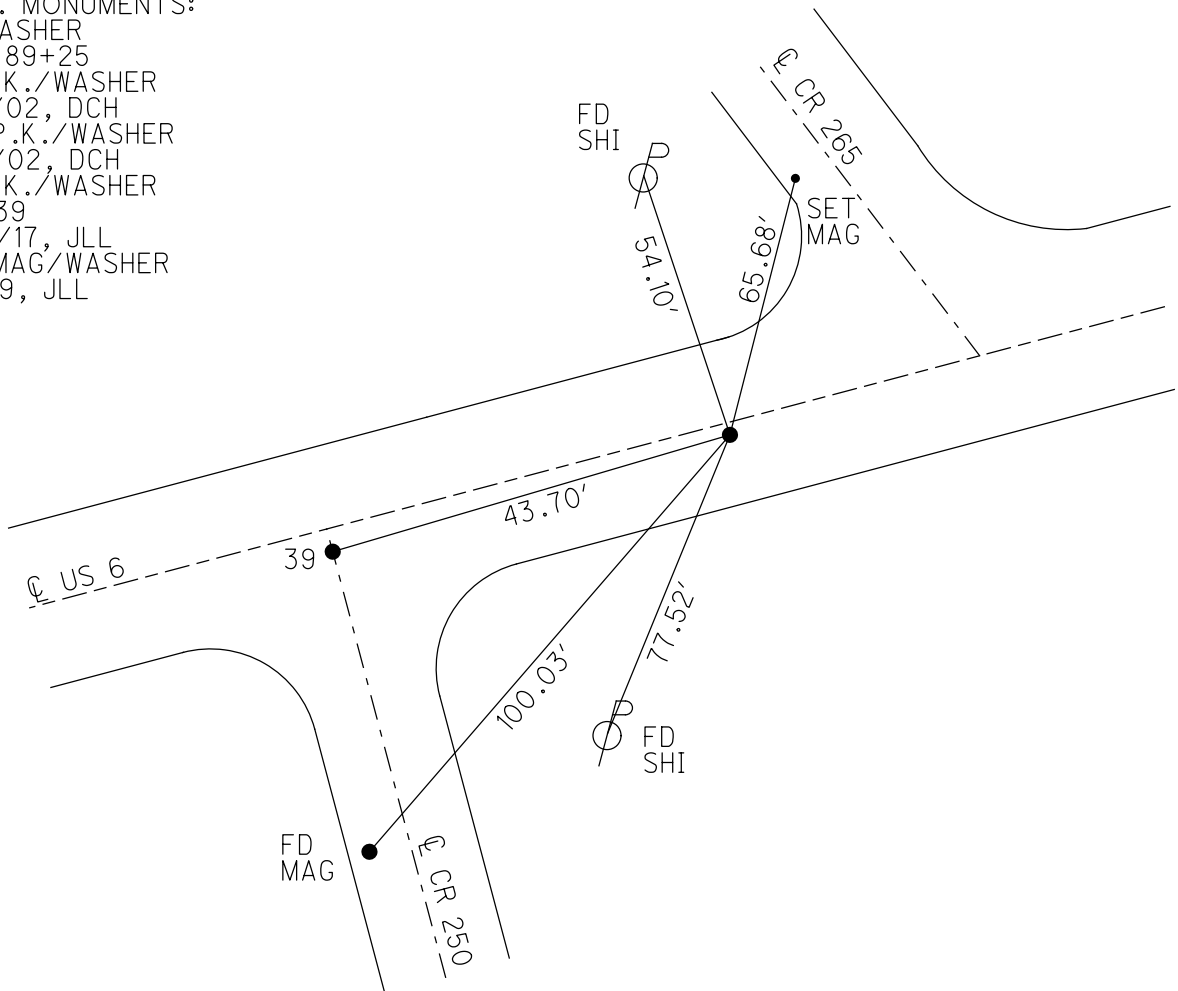
GEOID: 2012A

GRID: NORTHING: 634633.565

EASTING: 1836109.668



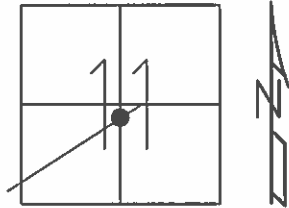
RECORD:  
 PREV. MONUMENTS:  
 PK/WASHER  
 STA. 89+25  
 FD P.K./WASHER  
 3/16/02, DCH  
 SET P.K./WASHER  
 6/10/02, DCH  
 FD P.K./WASHER  
 REFA39  
 11/22/17, JLL  
 SET MAG/WASHER  
 8-2-19, JLL



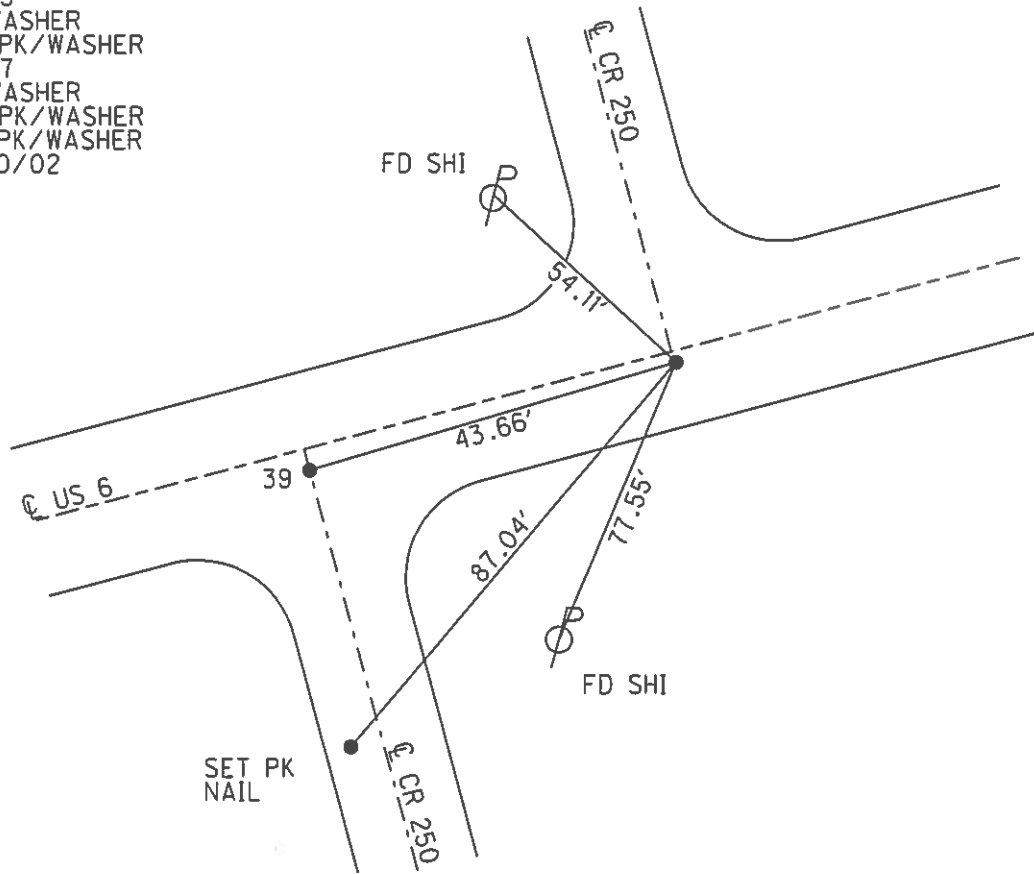
**O.D.O.T. DISTRICT 2 SURVEY OFFICE (USE ONLY)**

PERSONNEL	REFERENCE NO.	39 AA	SHEET	6	OF	31
NOTES	ROUSOS	DATE	03/16/02	ROUTE	US 6	
H.C.	VAN DUSEN	WEATHER	WINDY	COUNTY	SANDUSKY	
R.C.	MOSSER	TEMP.	28°	TOWNSHIP	RILEY	
	HOMAN			SECTION	11	
				T. 5 N	R. 16 E	

TYPE MONUMENT PK/WASHER  
 ON SURFACE - ~~BELOW~~ ON  
~~LEFT~~ - ☉ PAV'T - RIGHT 1"  
13.0' TO LT. EDGE PAVEMENT  
 S.L.M. 1329+80  
 GRID: NORTHING: - EASTING: -



RECORD:  
 PREVIOUS STATIONS & MONUMENTS:  
 89+25  
 PK/WASHER  
 SM SPK/WASHER  
 88+87  
 PK/WASHER  
 SM SPK/WASHER  
 SET PK/WASHER  
 06/10/02  
 DCH





O.D.O.T. DISTRICT 2 SURVEY OFFICE

PERSONNEL

REFERENCE NO. 39

SHEET 18 OF 30

NOTES CHENEY

H.C. RIPPLE

R.C. BARBOUR

DATE 9-16-1991

WEATHER SUNNY

TEMP. 85°

ROUTE 6

COUNTY SANDUSKY

TOWNSHIP PILEY

SECTION 11

T5N R16E

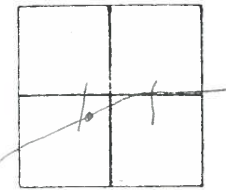
TYPE MONUMENT PKs/WASHERS

ON SURFACE - BELOW

~~LEFT~~ - ℄ PAV'T. - RIGHT BOTH - 1'

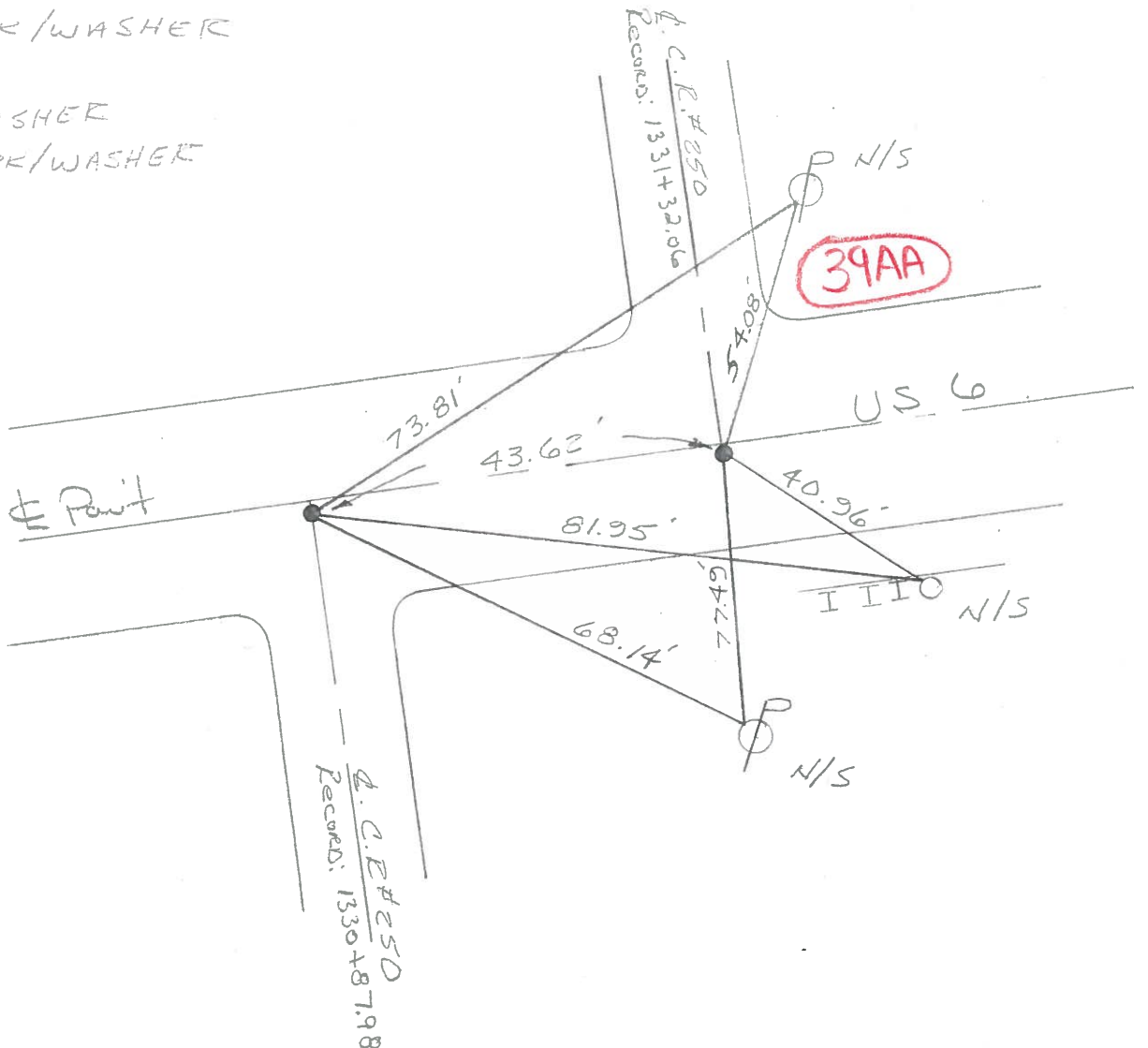
— TO — EDGE PAVEMENT

S.L.M. 1229+37 & 1229+30



PREVIOUS STATIONS & MONUMENTS:

- 89+25  
PK/WASHER
- SM. SPK/WASHER
- 88+87  
PK/WASHER
- SM. SPK/WASHER



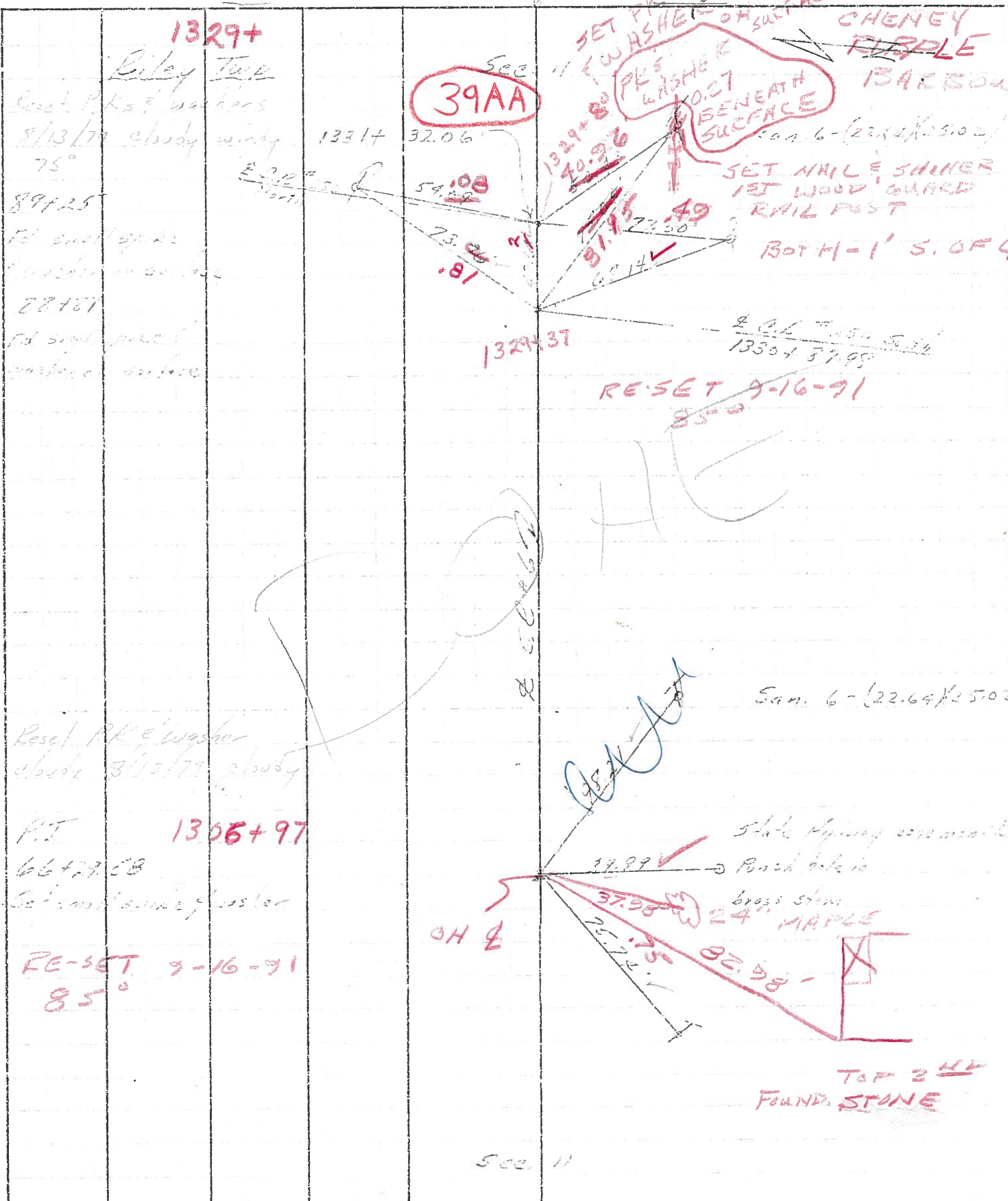
PERSONNEL	TITLE	PERSONNEL	TITLE
<u>Cravin</u>		<u>Schneiter</u>	
<u>Ash</u>		<u>Masser</u>	
<u>Cooper</u>		<u>Barbour</u>	

COUNTY Sandusky DATE 7/29/75

S. R. #6 WEATHER SUNNY

SEC. T - Fremont - East TEMP 75°

DESCRIPTION Ties for Control Points JOB NO.



Sec. 11

TOP 2 HP FOUND. STONE



