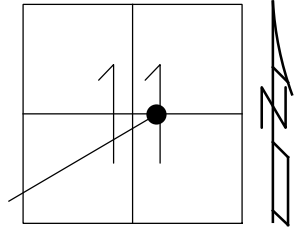


O.D.O.T. DISTRICT 2 SURVEY OFFICE (USE ONLY)

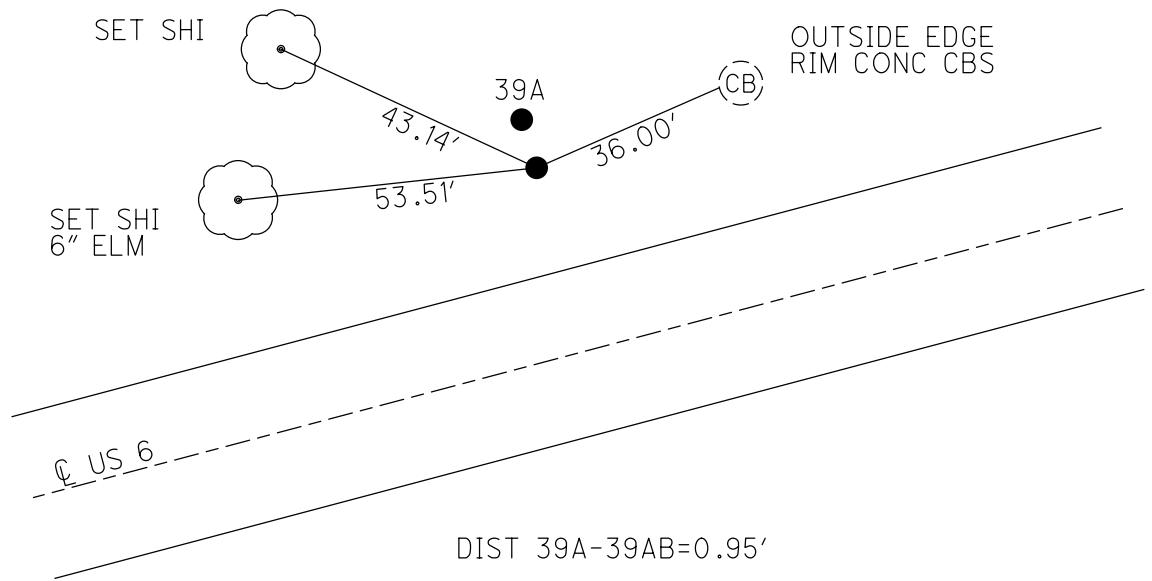
PERSONNEL \_\_\_\_\_ REFERENCE NO. 39 AB SHEET 9 OF 34  
 NOTES ROUSOS DATE 3/16/02 ROUTE US 6  
 H.C. VAN DUSEN WEATHER WINDY COUNTY SANDUSKY  
 R.C. MOSSER TEMP. 28° TOWNSHIP RILEY  
           HOMAN SECTION 11  
 DWG BY AUBLE PID 95769 T 5 N R 16 E

TYPE MONUMENT 1" IPIPE  
~~ON SURFACE~~ - BELOW 2"  
 OFFSET ☉ PAVEMENT - ~~RT~~ : RT  
35' LT TO LT EDGE PAVEMENT  
 STATION: 1337+24



HORIZ. DATUM: NAD83 (2011) GEOID: 2012A  
 GRID: NORTHING: 634938.195 EASTING: 1836799.280

RECORD: P.I.  
 SURVEY & R/W  
 OLD STA 1338+85.77  
 FD 1" IPIN  
 3/16/02, DCH  
 FD 1" IPIN  
 2" DOWN  
 REFC39  
 11/22/17, DCH



O.D.O.T. DISTRICT 2 SURVEY OFFICE (USE ONLY)

PERSONNEL

REFERENCE NO. 39 AB

SHEET 9 OF 34

NOTES ROUSOS  
 H.C. VAN DUSEN  
 R.C. MOSSER  
HOMAN

DATE 3/16/02  
 WEATHER WINDY  
 TEMP. 28°

ROUTE US 6  
 COUNTY SANDUSKY  
 TOWNSHIP RILEY  
 SECTION 11  
 T 5 N R 16 E

DWG BY AUBLE PID 95769

TYPE MONUMENT 1" IPIPE

~~ON SURFACE~~ - BELOW 2"

OFFSET  $\odot$  PAVEMENT - ~~LT~~ : RT

35' LT TO LT EDGE PAVEMENT

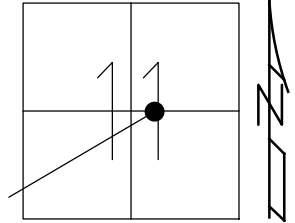
STATION: 1337+24

HORZ. DATUM: NAD83 (2011)

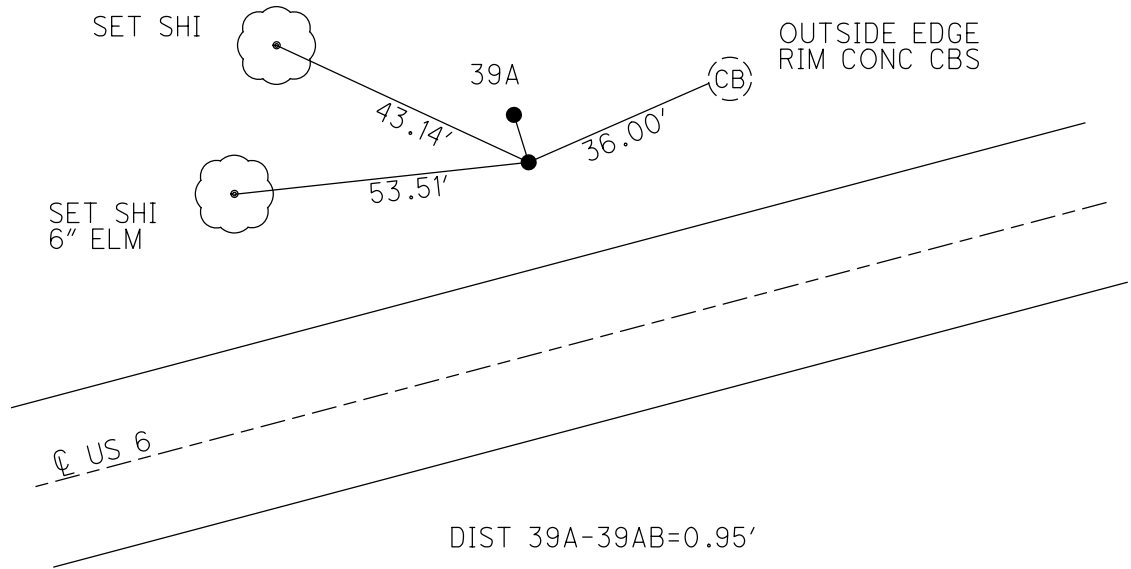
GEOID: 2012A

GRID: NORTHING: 634938.195

EASTING: 1836799.280



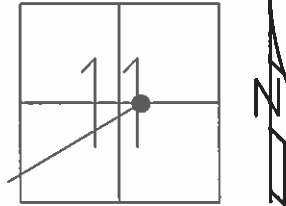
RECORD: P.I.  
 SURVEY & R/W  
 OLD STA 1338+85.77  
 FD 1" IPIN  
 3/16/02, DCH  
 FD 1" IPIN  
 2" DOWN  
 REFC39  
 11/22/17, DCH



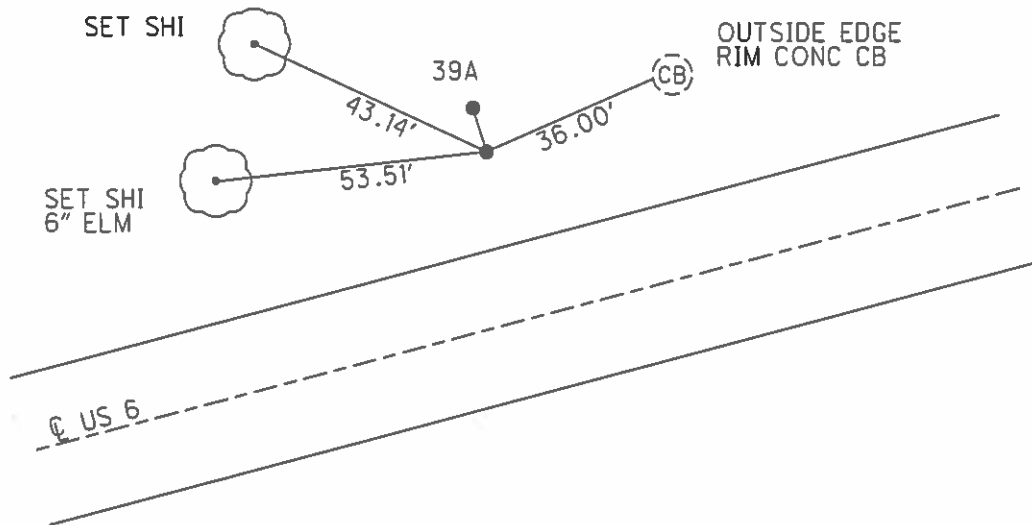
**O.D.O.T. DISTRICT 2 SURVEY OFFICE (USE ONLY)**

PERSONNEL	REFERENCE NO.	39 AB	SHEET	8	OF	31
NOTES	ROUSOS	DATE	03/16/02	ROUTE	US 6	
H.C.	VAN DUSEN	WEATHER	WINDY	COUNTY	SANDUSKY	
R.C.	MOSSER	TEMP.	28°	TOWNSHIP	RILEY	
	HOMAN			SECTION	11	
				T	5	N
				R	16	E

TYPE MONUMENT 1" IPIPE  
 ON SURFACE - BELOW -  
 LEFT - ☉ PAV'T - RIGHT -  
35.0' TO N EDGE PAVEMENT  
 S.L.M. 1337+24  
 GRID: NORTHING: - EASTING: -



RECORD:  
 OLD STA 96+68.12 (SAN-6-22.64-25.02)  
 PI SURVEY & R/W 1338+85.77  
 DIST 39A-39AB=0.95'



O.D.O.T. DISTRICT 2 SURVEY OFFICE

PERSONNEL

REFERENCE NO. 39-A

SHEET 7 OF 27

NOTES ROUSOS

DATE 3/16/02

ROUTE <sup>US</sup> ~~SR~~ 6

H.C. VAN DUSEN

WEATHER WINDY

COUNTY SANDUSKY

R.C. MOSSER

TEMP. 28°

TOWNSHIP RILEY

HOMAN

SECTION 11

T5 N R16 E

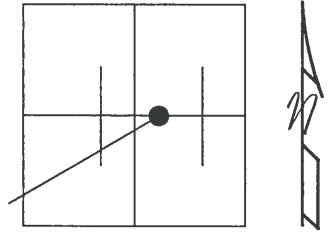
TYPE MONUMENT "A"=1" ROD "B"=1" O. D. PIPE

ON SURFACE - BELOW \_\_\_\_\_

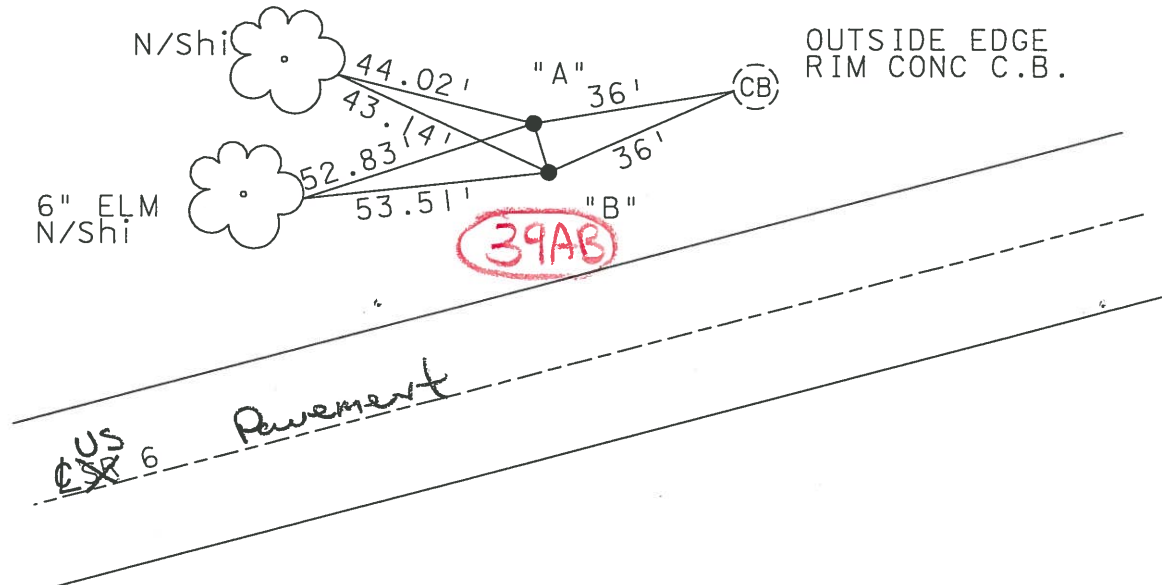
~~LEFT - C~~ PAV'T - ~~RIGHT~~ \_\_\_\_\_

35' TO N EDGE PAVEMENT

S.L.M. 1337+24



"A"  
 OLD STA 1338+85.97 (SAN-6-22.64-25.02)  
 P.I., CONST.  
 "B"  
 OLD STA 96+68.12 (SAN-6-22.64-25.02)  
 P.I. SURVEY & R/W 1338+85.77



DIST "A" - "B" = 0.95'

O.D.O.T. DISTRICT 2 SURVEY OFFICE

PERSONNEL \_\_\_\_\_

REFERENCE NO. \_\_\_\_\_

SHEET 19 OF 39

NOTES CHENEY

H.C. ETZLE

DATE 9-16-1991

ROUTE 6

R.C. BARBOUR

WEATHER SUNNY

COUNTY SANDUSKY

TEMP. 85°

TOWNSHIP RILEY

SECTION 11

T 5 N R 16 E

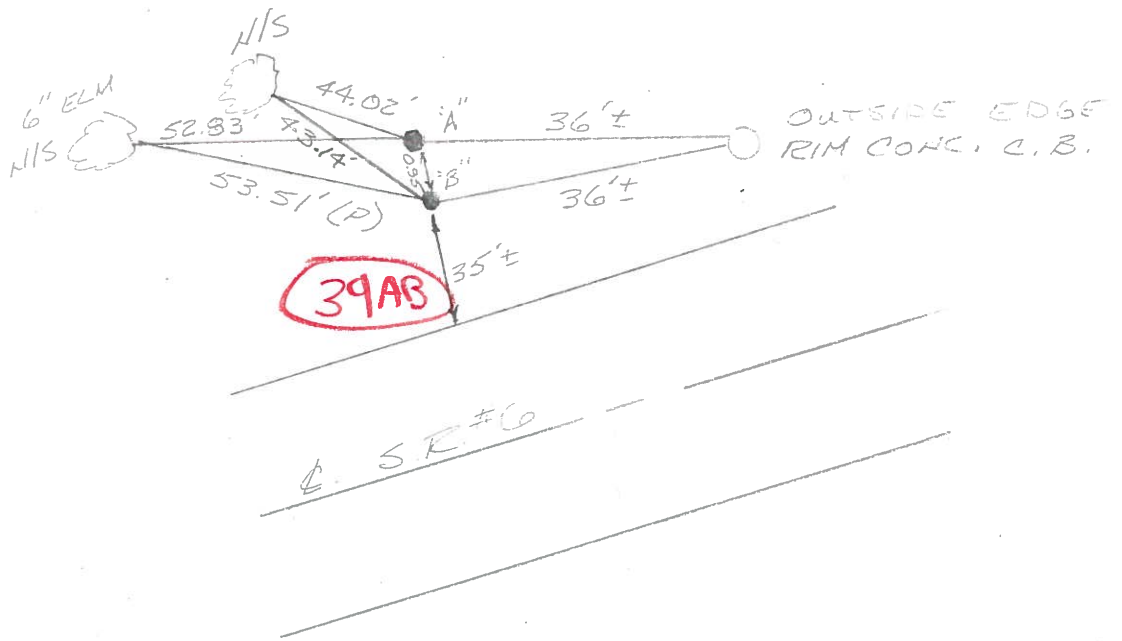
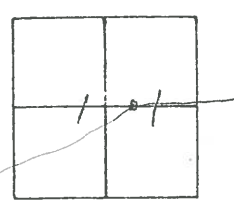
TYPE MONUMENT A" = 1" ROD B" = 1" O.D. PIPE

ON SURFACE - BELOW \_\_\_\_\_

LEFT - CL PAV'T. - RIGHT \_\_\_\_\_

35' S. TO N EDGE PAVEMENT

S.L.M. 1337+24



**39AB**

CL. SR #6

A

OLD STA. 1338+85.97 (SAN-6-[22.64-25.02])

P.I. CONST.

B

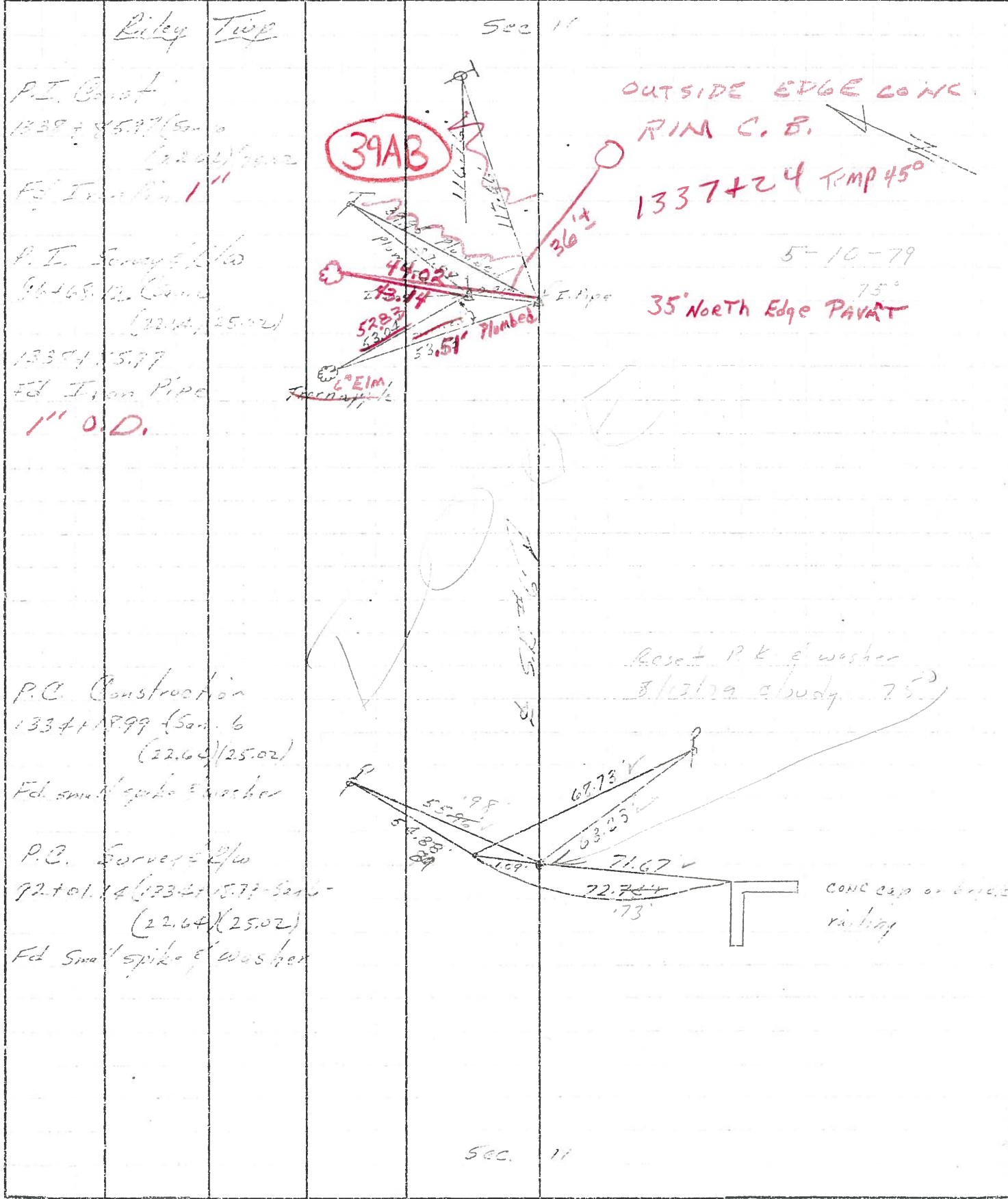
OLD STA. 96+68.12 (SAN-6-[22.64-25.02])

P.I. SURVEY R/W. 1338+85.77

PERSONNEL	TITLE	PERSONNEL	TITLE
<i>Pharris</i>		<i>Schneider</i>	
<i>Ash</i>		<i>Moser</i>	
<i>Geisner</i>		<i>Barbour</i>	

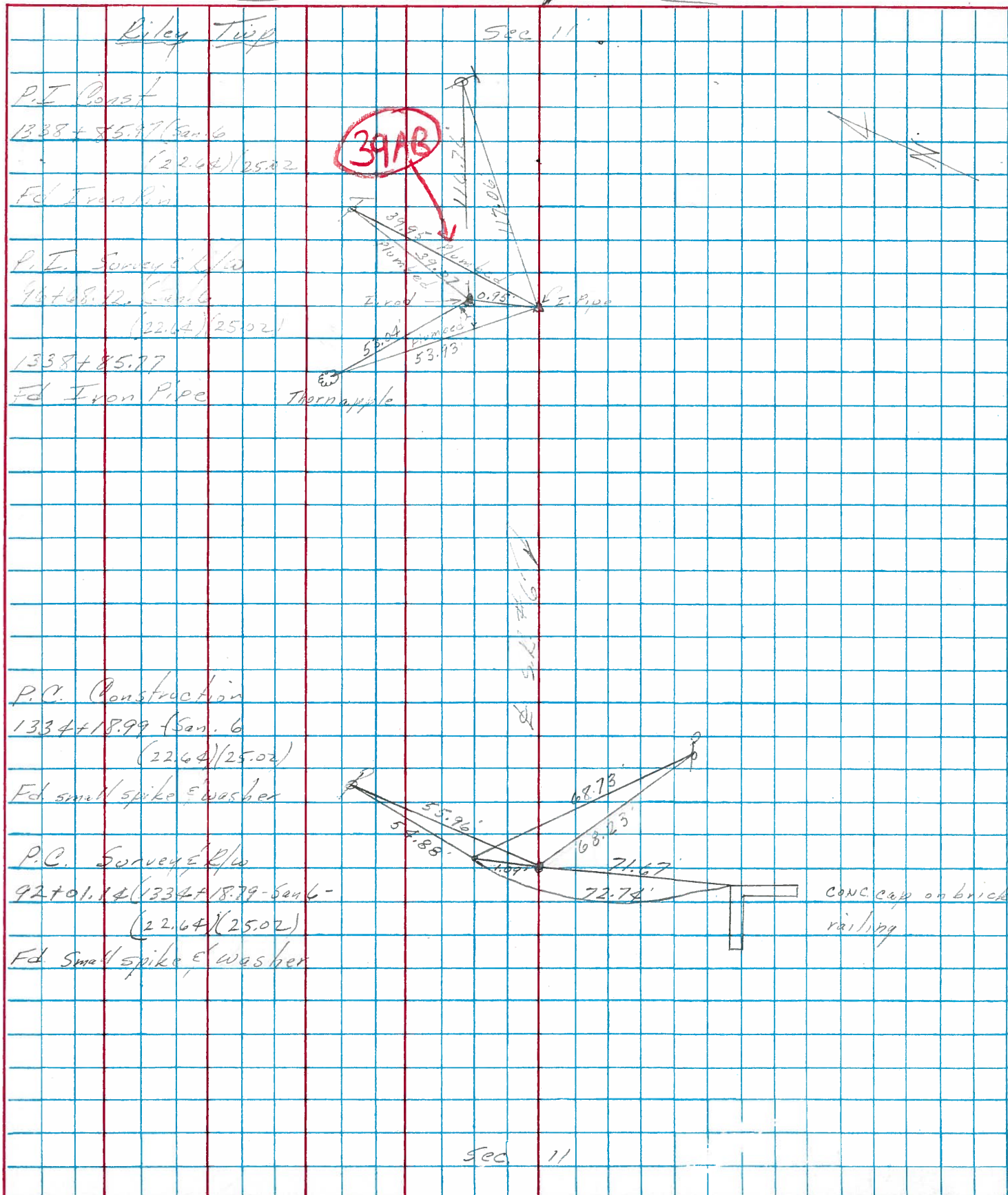
COUNTY *Sandusky* DATE *7/27/75*  
 S. R. # *6* WEATHER *Sunny*  
 SEC. *"I" - Front - East* TEMP. *80°*

DESCRIPTION *Ties for Control Points* JOB NO. \_\_\_\_\_



PERSONNEL	TITLE	PERSONNEL	TITLE	COUNTY	Sandusky	DATE	7/29/75
Crogin		Schneider		S. R.	# 6	WEATHER	sunny
Asb		Messer		SEC.	"I" - Fremont-East	TEMP.	80°
Geyman		Barbour					

DESCRIPTION Ties for Control Points LEFT CENTER LINE RIGHT JOB NO.



PERSONNEL TITLE PERSONNEL TITLE

Schneider

COUNTY Sandusky

DATE 12-29-6

Hawk

S. R. U.S.R #6

WEATHER Cloudy

Mosser

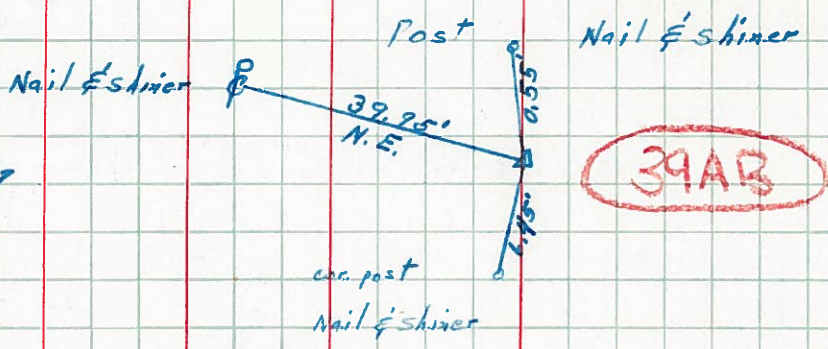
SEC. Raccoon Ck. Bridge

TEMP. 26°

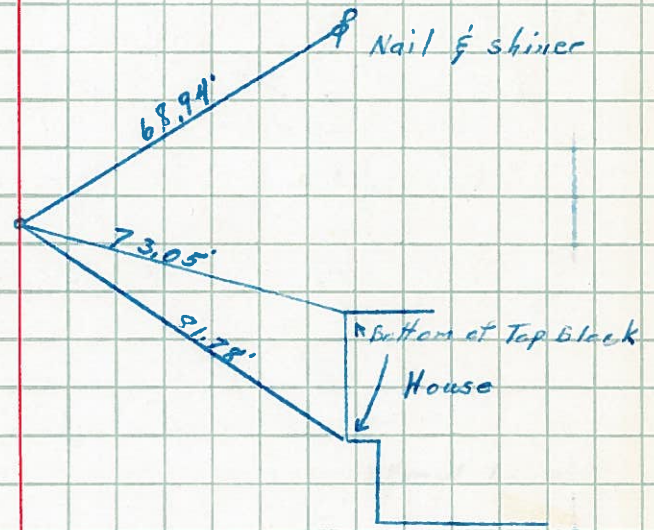
Ripple

DESCRIPTION Ties for sta. on each End of Bridge & P.I. LEFT CENTER LINE RIGHT JOB NO.

P.I. 1338+95.77  
1 1/4" Iron pipe



P.C. 1334+18.79



1332+00

