

O.D.O.T. DISTRICT 2 SURVEY OFFICE (USE ONLY)

PERSONNEL _____

REFERENCE NO. 39 B

SHEET 10 OF 34

NOTES LEU

DATE 8/1/18

ROUTE US 6

H.C. LEU

WEATHER CLOUDY

COUNTY SANDUSKY

R.C. TRENKA

TEMP. 75°

TOWNSHIP RILEY

SECTION 11

DWG BY AUBLE

PID PAVETRAIN

T 5 N R 16 E

TYPE MONUMENT P.K./WASHER

ON SURFACE - ~~BELOW~~ ON

OFFSET 0 PAVEMENT ON ~~RT~~ : ~~RT~~

12' TO RT EDGE PAVEMENT

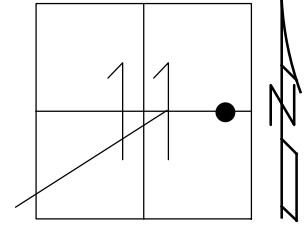
STATION: 1341+85

HORZ.DATUM: NAD83 (2011)

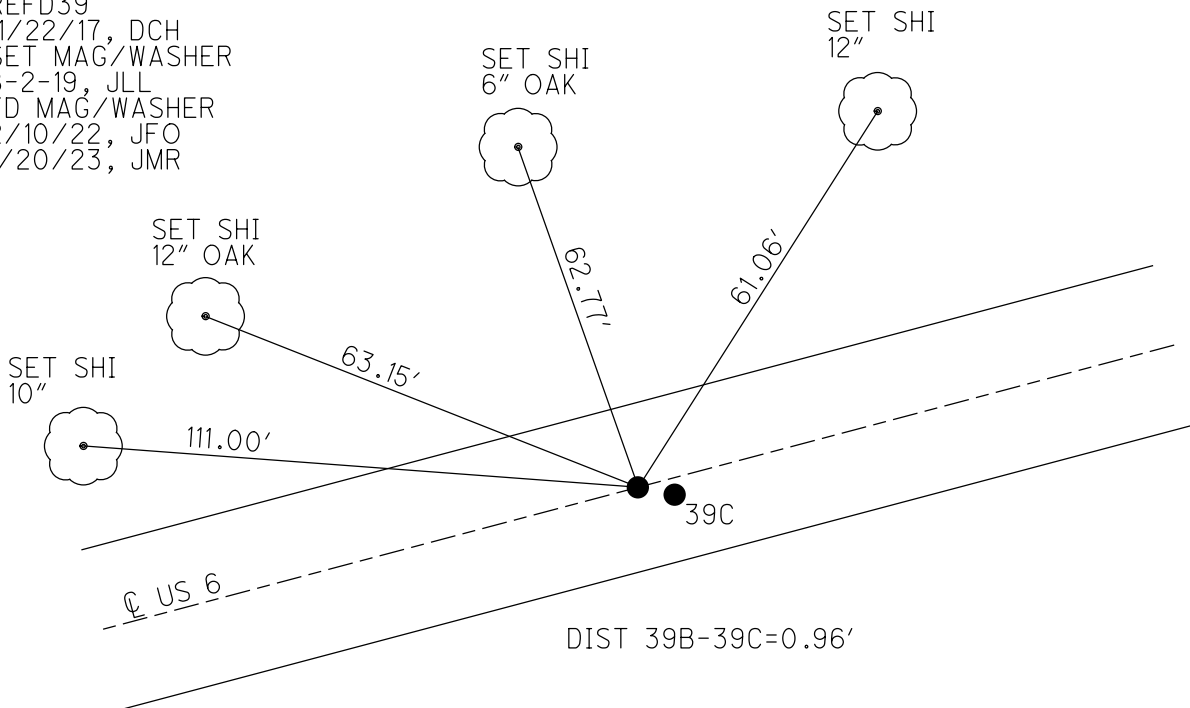
GEOID: 2012A

GRID: NORTHING: 634945.112

EASTING: 1837266.029



RECORD: P.T.
 STA.1343+40.32
 PREVIOUS MONUMENTS:
 P.K./WASHER
 SM.SPIKE/WASHER
 FD P.K./WASHER
 3/16/02, DCH
 SET P.K./WASHER
 6/10/02, DCH
 FD P.K./WASHER
 REFD39
 11/22/17, DCH
 SET MAG/WASHER
 8-2-19, JLL
 FD MAG/WASHER
 2/10/22, JFO
 1/20/23, JMR

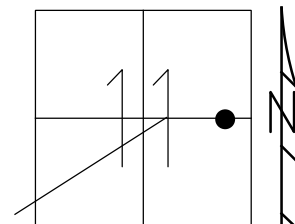


O.D.O.T. DISTRICT 2 SURVEY OFFICE (USE ONLY)

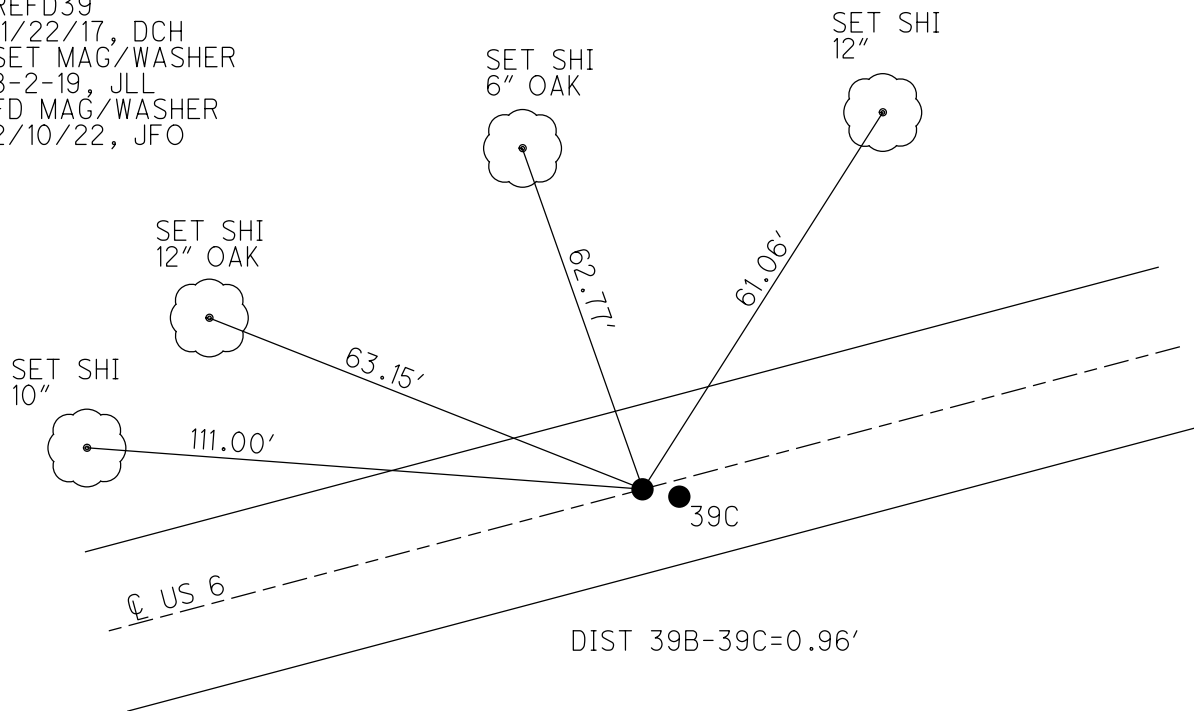
PERSONNEL _____ REFERENCE NO. 39 B SHEET 10 OF 34
 NOTES LEU DATE 8/1/18 ROUTE US 6
 H.C. LEU WEATHER CLOUDY COUNTY SANDUSKY
 R.C. TRENKA TEMP. 75° TOWNSHIP RILEY
 DWG BY AUBLE PID 95769 SECTION 11
 T 5 N R 16 E

TYPE MONUMENT P.K./WASHER
 ON SURFACE - ~~BELOW~~ ON
 OFFSET C PAVEMENT ON ~~LT~~ : ~~RT~~
12' TO RT EDGE PAVEMENT
 STATION: 1341+85

HORZ.DATUM: NAD83 (2011) GEOID: 2012A
 GRID: NORTHING: 634945.112 EASTING: 1837266.029



RECORD: P.T.
 STA.1343+40.32
 PREVIOUS MONUMENTS:
 P.K./WASHER
 SM.SPIKE/WASHER
 FD P.K./WASHER
 3/16/02, DCH
 SET P.K./WASHER
 6/10/02, DCH
 FD P.K./WASHER
 REFD39
 11/22/17, DCH
 SET MAG/WASHER
 8-2-19, JLL
 FD MAG/WASHER
 2/10/22, JFO



O.D.O.T. DISTRICT 2 SURVEY OFFICE (USE ONLY)

PERSONNEL _____

REFERENCE NO. 39 B

SHEET 10 OF 34

NOTES LEU

DATE 8/1/18

ROUTE US 6

H.C. LEU

WEATHER CLOUDY

COUNTY SANDUSKY

R.C. TRENKA

TEMP. 75°

TOWNSHIP RILEY

SECTION 11

DWG BY AUBLE PID 95769

T 5 N R 16 E

TYPE MONUMENT P.K./WASHER

ON SURFACE - ~~BELOW~~ ON

OFFSET Q PAVEMENT ON ~~RT~~ : ~~RT~~

12' TO RT EDGE PAVEMENT

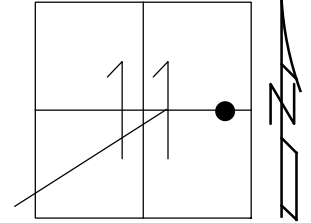
STATION: 1341+85

HORZ.DATUM: NAD83 (2011)

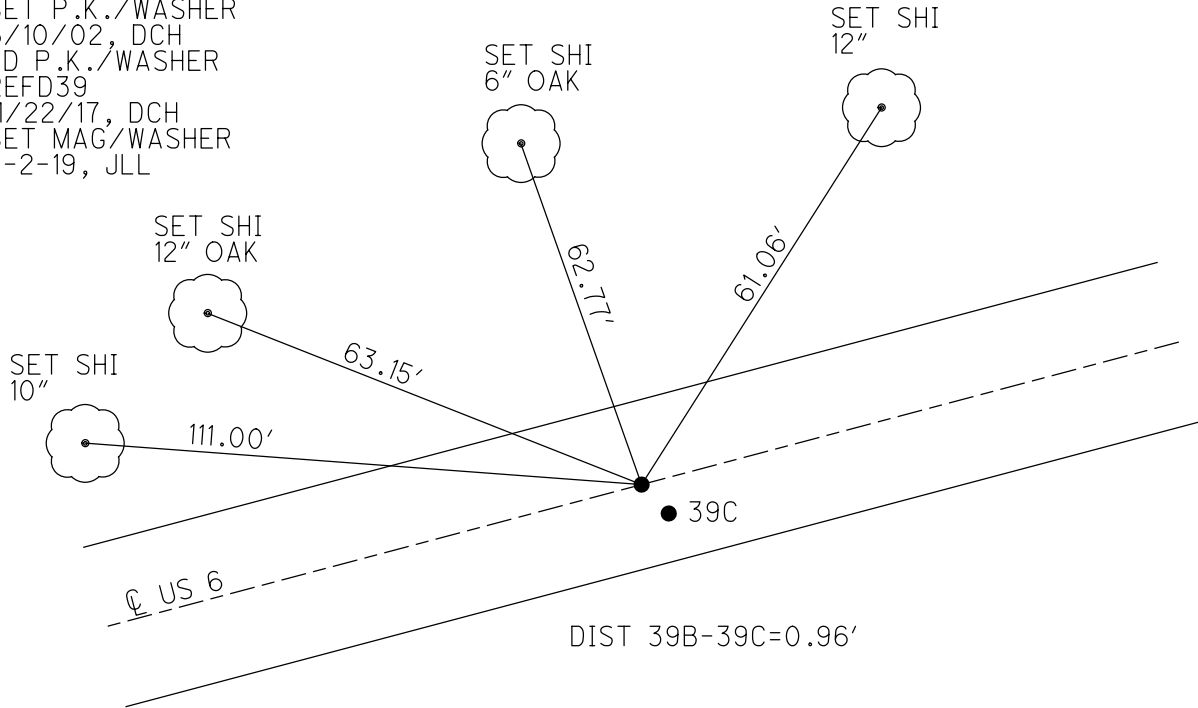
GEOID: 2012A

GRID: NORTHING: 634945.112

EASTING: 1837266.029



RECORD: P.T.
 STA.1343+40.32
 PREVIOUS MONUMENTS:
 P.K./WASHER
 SM.SPIKE/WASHER
 FD P.K./WASHER
 3/16/02, DCH
 SET P.K./WASHER
 6/10/02, DCH
 FD P.K./WASHER
 REFD39
 11/22/17, DCH
 SET MAG/WASHER
 8-2-19, JLL

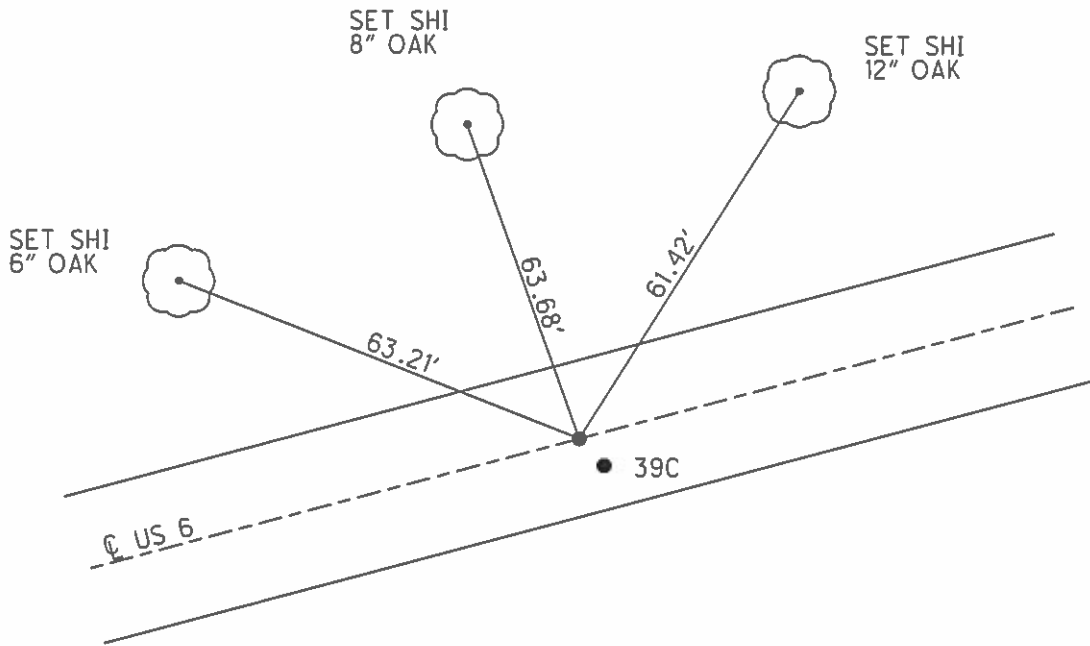
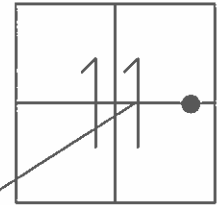


DIST 39B-39C=0.96'

O.D.O.T. DISTRICT 2 SURVEY OFFICE (USE ONLY)

PERSONNEL	REFERENCE NO.	39 B	SHEET	9	OF	31
NOTES	ROUSOS	DATE	03/16/02	ROUTE	US 6	
H.C.	VAN DUSEN	WEATHER	WINDY	COUNTY	SANDUSKY	
R.C.	MOSSER	TEMP.	28°	TOWNSHIP	RILEY	
	HOMAN			SECTION	11	
				T. 5 N	R. 16 E	

TYPE MONUMENT PK/WASHER
 ON SURFACE - ~~BELOW~~ ON
~~LEFT~~ - Q PAV'T - ~~RIGHT~~ ON
12.0" TO RT EDGE PAVEMENT
 S.L.M. 1341+85
 GRID: NORTHING: - EASTING: -



RECORD:
 PT CONST 1343+40.32
 SAN 6 (22.64)(25.02)
 PREVIOUS MONUMENTS
 PK/WASHER
 SM SPK/WASHER
 SET PK/WASHER
 06/10/02 DCH
 DIST 39B-39C=0.95'

O.D.O.T. DISTRICT 2 SURVEY OFFICE

PERSONNEL

NOTES ROUSOS
 H.C. VAN DUSEN
 R.C. MOSSER
HOMAN

REFERENCE NO. 39-B

DATE 3/16/02
 WEATHER WINDY
 TEMP. 28°

SHEET 8 OF 27

ROUTE SR 6
 COUNTY SANDUSKY
 TOWNSHIP RILEY
 SECTION 11
T5 N R16 E

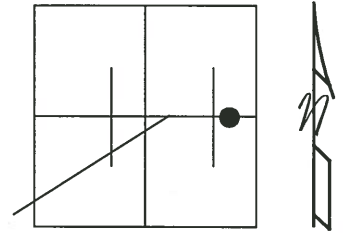
TYPE MONUMENT PK'S & WASHERS

ON SURFACE - BELOW ON

~~LEFT - C~~ PAV'T - ~~RIGHT~~ "A" ON "B" 1.0' RT

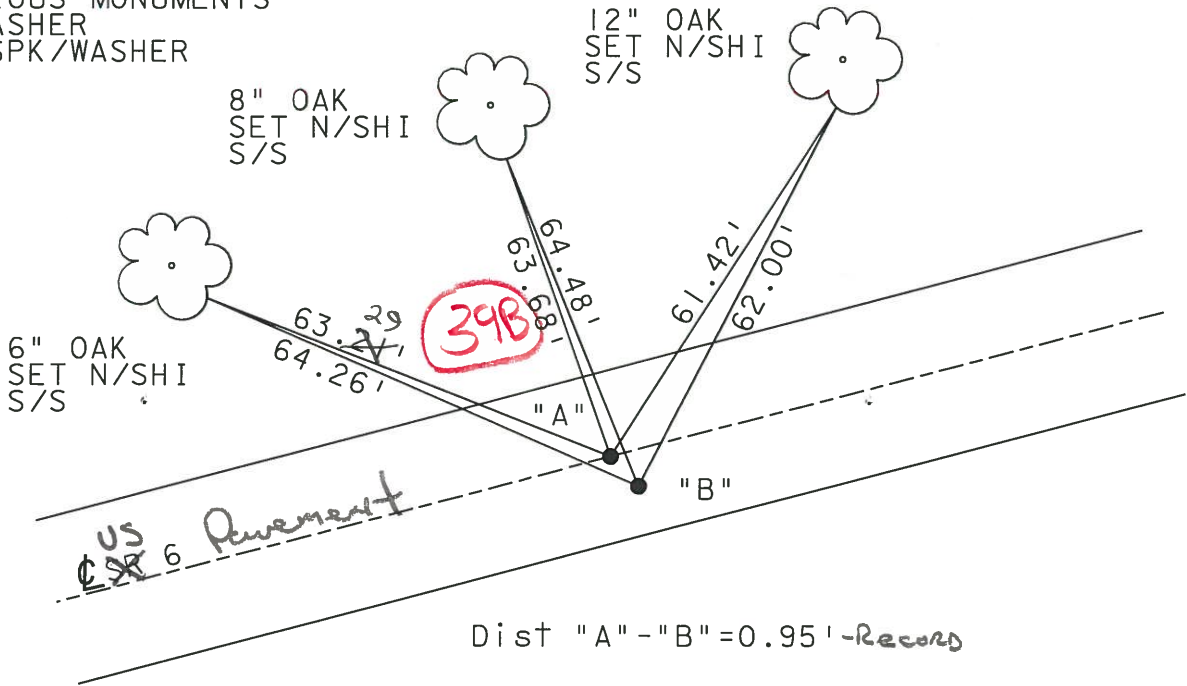
TO EDGE PAVEMENT "A" 12' TO RT EDGE
 "B" 11' TO RT EDGE

S.L.M. 1341+85



"A"
 P.T. CONST 1343+40.32
 SAN 6 (22.64)(25.02)
 PREVIOUS MONUMENTS
 PK/WASHER
 SM. SPK/WASHER

SET PK'S & WASHER'S
 6-10-02
 DCH



"B"
 P.T. SURVEY & R/W 1343+40.12
 SAN 6 (22.64)(25.02)
 OLD STA 101+22.47
 PREVIOUS MONUMENTS
 PK/WASHER
 SM. SPK/WASHER