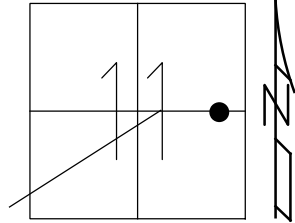


O.D.O.T. DISTRICT 2 SURVEY OFFICE (USE ONLY)

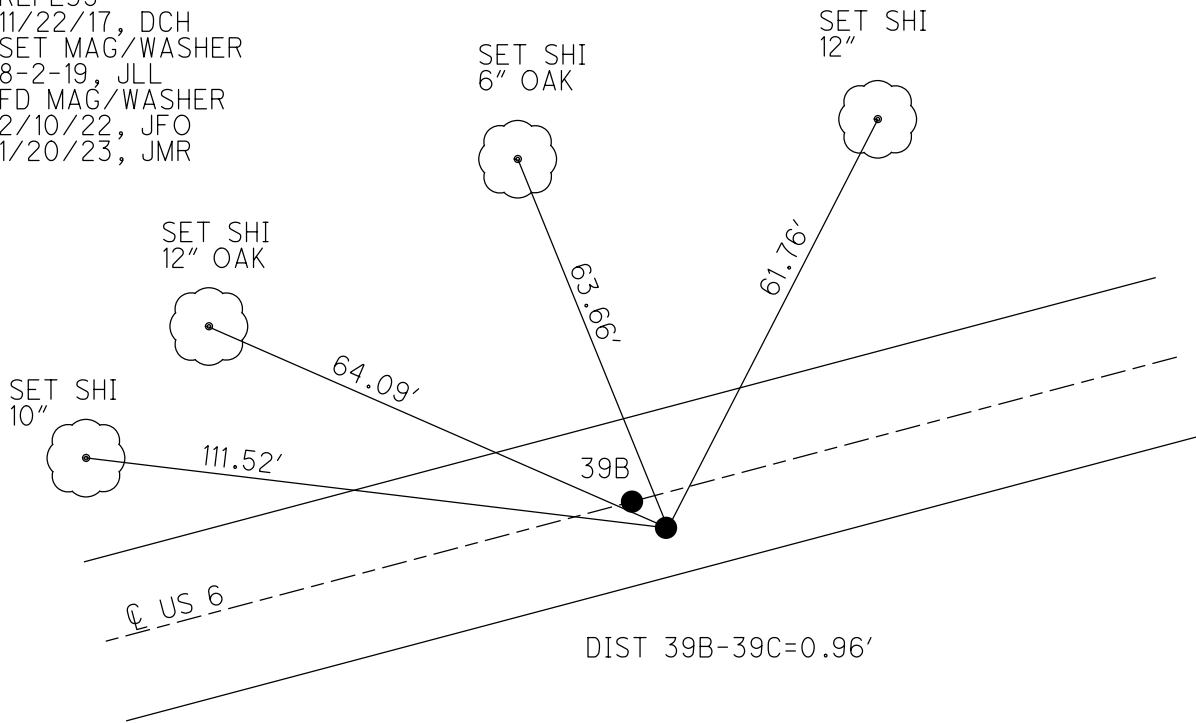
PERSONNEL \_\_\_\_\_ REFERENCE NO. 39 C SHEET 11 OF 34  
 NOTES LEU DATE 8/1/18 ROUTE US 6  
 H.C. LEU WEATHER CLOUDY COUNTY SANDUSKY  
 R.C. TRENKA TEMP. 75° TOWNSHIP RILEY  
 DWG BY AUBLE PID PAVETRAIN SECTION 11  
 T 5 N R 16 E

TYPE MONUMENT P.K./WASHER  
 ON SURFACE - ~~BELOW~~ ON  
 OFFSET 1.0' LT : RT  
11' TO RT EDGE PAVEMENT  
 STATION: 1341+85

HORIZ.DATUM: NAD83 (2011) GEOID: 2012A  
 GRID: NORTHING: 634944.170 EASTING: 1837266.138



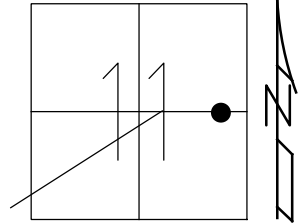
RECORD:  
 FD P.K./WASHER  
 3/16/02, DCH  
 SET P.K./WASHER  
 6/10/02, DCH  
 FD P.K./WASHER  
 REFE39  
 11/22/17, DCH  
 SET MAG/WASHER  
 8-2-19, JLL  
 FD MAG/WASHER  
 2/10/22, JFO  
 1/20/23, JMR



O.D.O.T. DISTRICT 2 SURVEY OFFICE (USE ONLY)

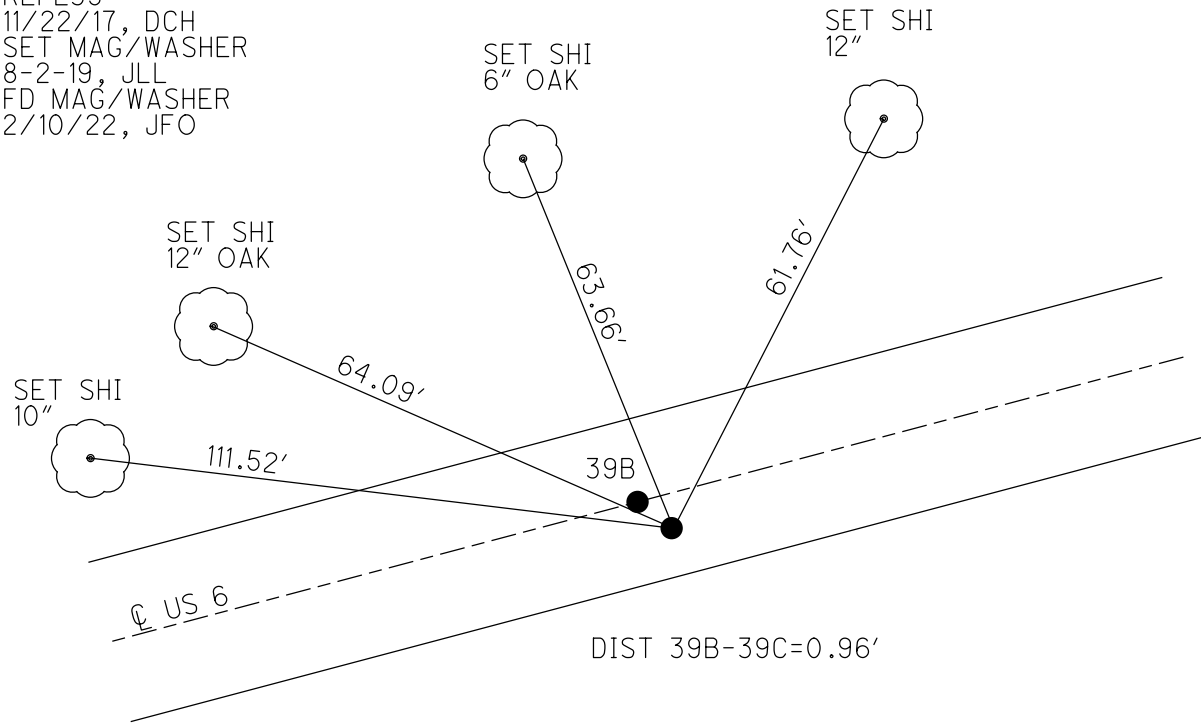
PERSONNEL \_\_\_\_\_ REFERENCE NO. 39 C SHEET 11 OF 34  
 NOTES LEU DATE 8/1/18 ROUTE US 6  
 H.C. LEU WEATHER CLOUDY COUNTY SANDUSKY  
 R.C. TRENKA TEMP. 75° TOWNSHIP RILEY  
 DWG BY AUBLE PID 95769 SECTION 11  
 T 5 N R 16 E

TYPE MONUMENT P.K./WASHER  
 ON SURFACE - ~~BELOW~~ ON  
 OFFSET Q PAVEMENT 1.0' ~~LT~~ : RT  
11' TO RT EDGE PAVEMENT  
 STATION: 1341+85



HORIZ.DATUM: NAD83 (2011) GEOID: 2012A  
 GRID: NORTHING: 634944.170 EASTING: 1837266.138

RECORD:  
 FD P.K./WASHER  
 3/16/02, DCH  
 SET P.K./WASHER  
 6/10/02, DCH  
 FD P.K./WASHER  
 REFE39  
 11/22/17, DCH  
 SET MAG/WASHER  
 8-2-19, JLL  
 FD MAG/WASHER  
 2/10/22, JFO



DIST 39B-39C=0.96'

O.D.O.T. DISTRICT 2 SURVEY OFFICE (USE ONLY)

PERSONNEL

REFERENCE NO. 39 C

SHEET 11 OF 34

NOTES LEU

DATE 8/1/18

ROUTE US 6

H.C. LEU

WEATHER CLOUDY

COUNTY SANDUSKY

R.C. TRENKA

TEMP. 75°

TOWNSHIP RILEY

SECTION 11

DWG BY AUBLE

PID 95769

T 5 N R 16 E

TYPE MONUMENT P.K./WASHER

ON SURFACE - BELOW ON

OFFSET  $\varnothing$  PAVEMENT 1.0' RT : RT

11' TO RT EDGE PAVEMENT

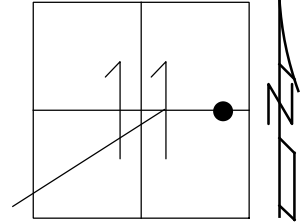
STATION: 1341+85

HORZ.DATUM: NAD83 (2011)

GEOID: 2012A

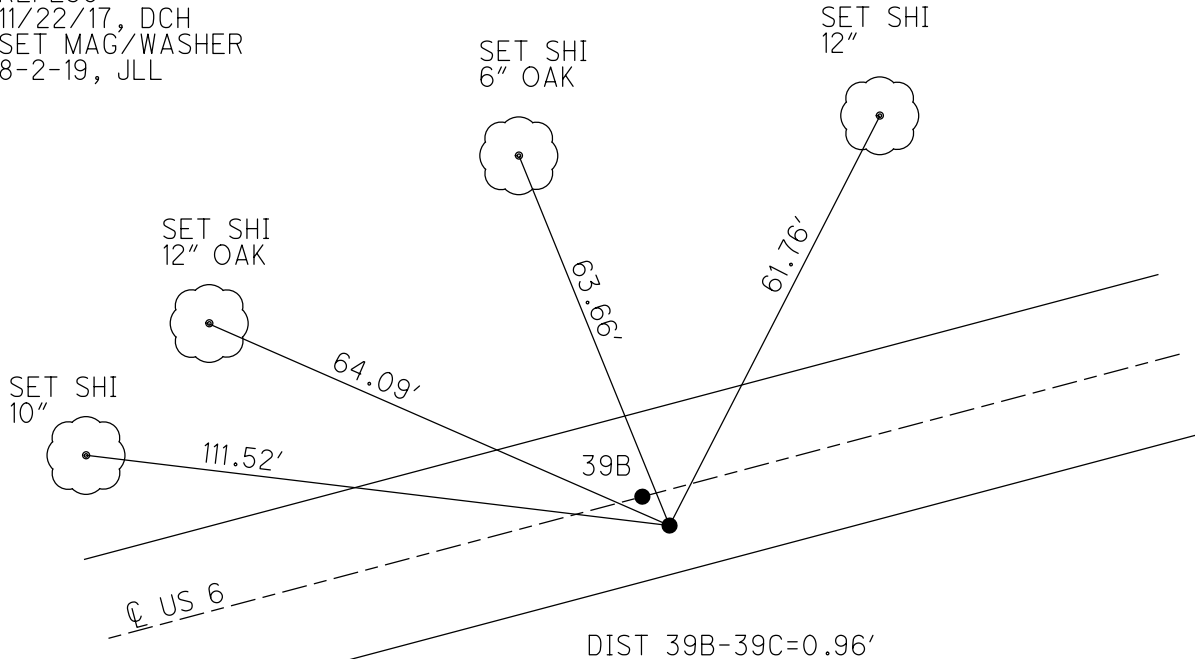
GRID: NORTHING: 634944.170

EASTING: 1837266.138



RECORD:

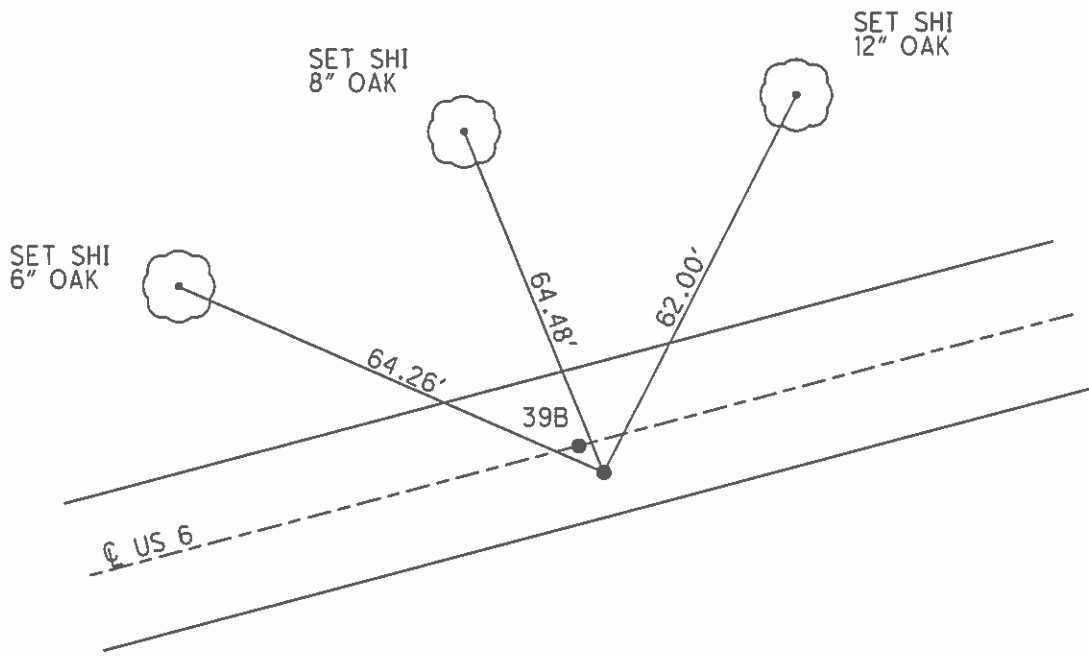
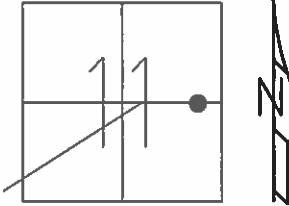
FD P.K./WASHER  
 3/16/02, DCH  
 SET P.K./WASHER  
 6/10/02, DCH  
 FD P.K./WASHER  
 REFE39  
 11/22/17, DCH  
 SET MAG/WASHER  
 8-2-19, JLL



**O.D.O.T. DISTRICT 2 SURVEY OFFICE (USE ONLY)**

PERSONNEL \_\_\_\_\_ REFERENCE NO. 39 B SHEET 10 OF 31  
 NOTES ROUSOS DATE 03/16/02 ROUTE US 6  
 H.C. VAN DUSEN WEATHER WINDY COUNTY SANDUSKY  
 R.C. MOSSER TEMP. 28° TOWNSHIP RILEY  
 \_\_\_\_\_ HUMAN \_\_\_\_\_ SECTION 11  
 \_\_\_\_\_ T 5 N R 16 E

TYPE MONUMENT \_\_\_\_\_ PK/WASHER \_\_\_\_\_  
 ON SURFACE - ~~BELOW~~ \_\_\_\_\_ ON \_\_\_\_\_  
~~LEFT~~ - C PAV'T - RIGHT \_\_\_\_\_ 1.0'  
11.0' TO RT EDGE PAVEMENT  
 S.L.M. \_\_\_\_\_ 1341+85  
 GRID: NORTHING: \_\_\_\_\_ EASTING: \_\_\_\_\_



RECORD:  
 PT C SURVEY & R/W 1343+40.12  
 SAN 6 (22.64)(25.02)  
 OLD STA 101+22.47  
 PREVIOUS MONUMENTS  
 PK/WASHER  
 SM SPK/WASHER  
 SET PK/WASHER  
 06/10/02 DCH  
 DIST 39B-39C=0.95'

O.D.O.T. DISTRICT 2 SURVEY OFFICE

PERSONNEL

REFERENCE NO. 39-B

SHEET 8 OF 27

NOTES ROUSOS

DATE 3/16/02

ROUTE US 6

H.C. VAN DUSEN

WEATHER WINDY

COUNTY SANDUSKY

R.C. MOSSER

TEMP. 28°

TOWNSHIP RILEY

HOMAN

SECTION 11

T 5 N R 16 E

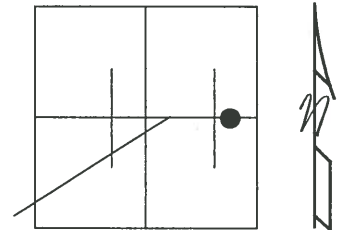
TYPE MONUMENT PK'S & WASHERS

ON SURFACE - BELOW ON \_\_\_\_\_

~~LEFT - Q~~ PAV'T - ~~RIGHT~~ "A" ON "B" 1.0' RT

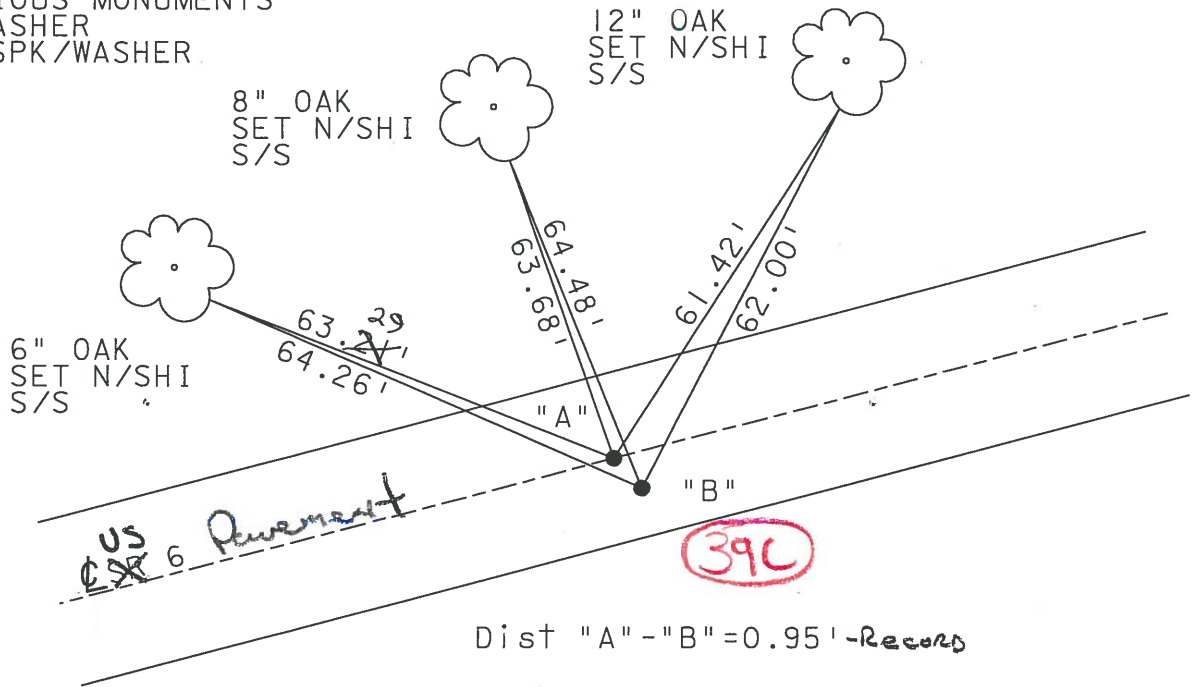
TO \_\_\_\_\_ EDGE PAVEMENT "A" 12' TO RT EDGE  
"B" 11' TO RT EDGE

S.L.M. \_\_\_\_\_ 1341+85



"A"  
P.T. CONST 1343+40.32  
SAN 6 (22.64)(25.02)  
PREVIOUS MONUMENTS  
PK/WASHER  
SM. SPK/WASHER.

SET PK'S & WASHER'S  
6-10-02  
DCH



Dist "A" - "B" = 0.95' - Record

"B"  
P.T. SURVEY & R/W 1343+40.12  
SAN 6 (22.64)(25.02)  
OLD STA 101+22.47  
PREVIOUS MONUMENTS  
PK/WASHER  
SM. SPK/WASHER

O.D.O.T. DISTRICT 2 SURVEY OFFICE

PERSONNEL \_\_\_\_\_

REFERENCE NO. \_\_\_\_\_

SHEET 20 OF 39

NOTES CHEHEY

H.C. EPPLER

R.C. BARBOUR

DATE 3-16-1991

WEATHER SUNNY

TEMP. 85°

ROUTE 6

COUNTY SANDUSKY

TOWNSHIP RILEY

SECTION 11

T 5 N R 16 E

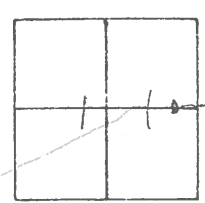
TYPE MONUMENT PKs/WASHERS

ON SURFACE - ~~BELOW~~ \_\_\_\_\_

LEFT - ☉ PAV'T. - RIGHT \_\_\_\_\_

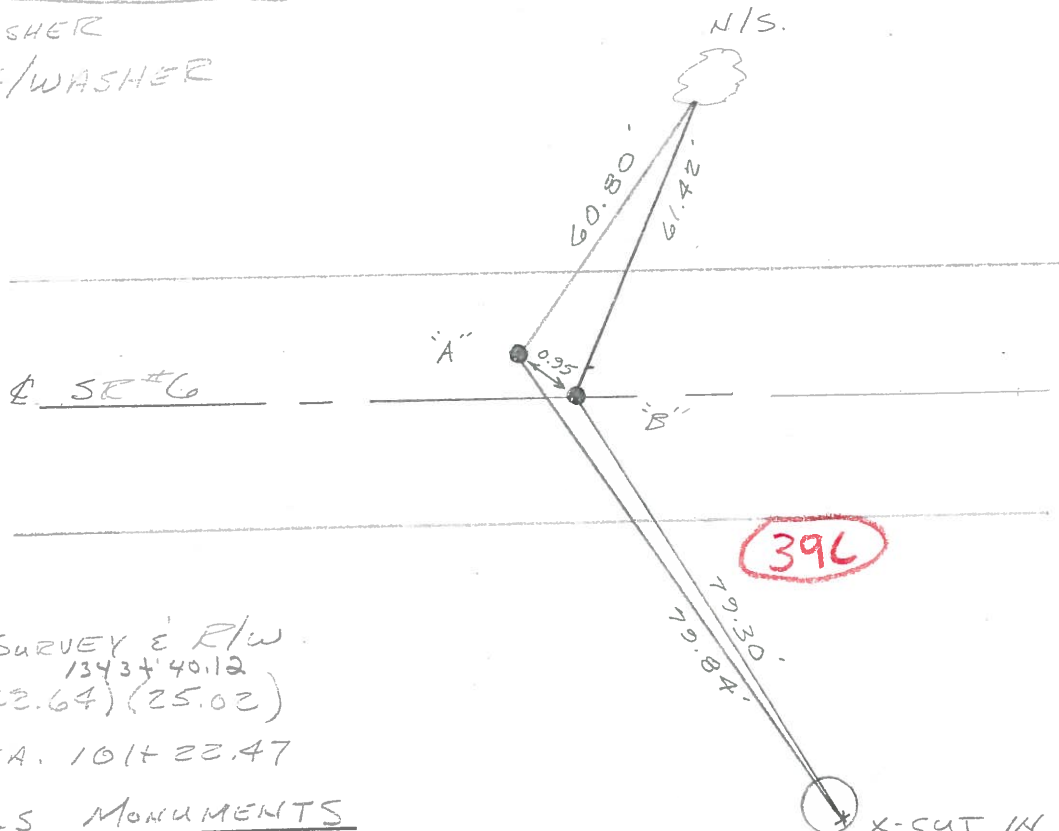
TO \_\_\_\_\_ EDGE PAVEMENT

S.L.M. 1341+85



"A"  
 P.T. CONST. 1343+40.32  
 SAN 6 (22.64) (25.02)  
 PREVIOUS MONUMENTS

PK/WASHER  
 SM. SPK/WASHER



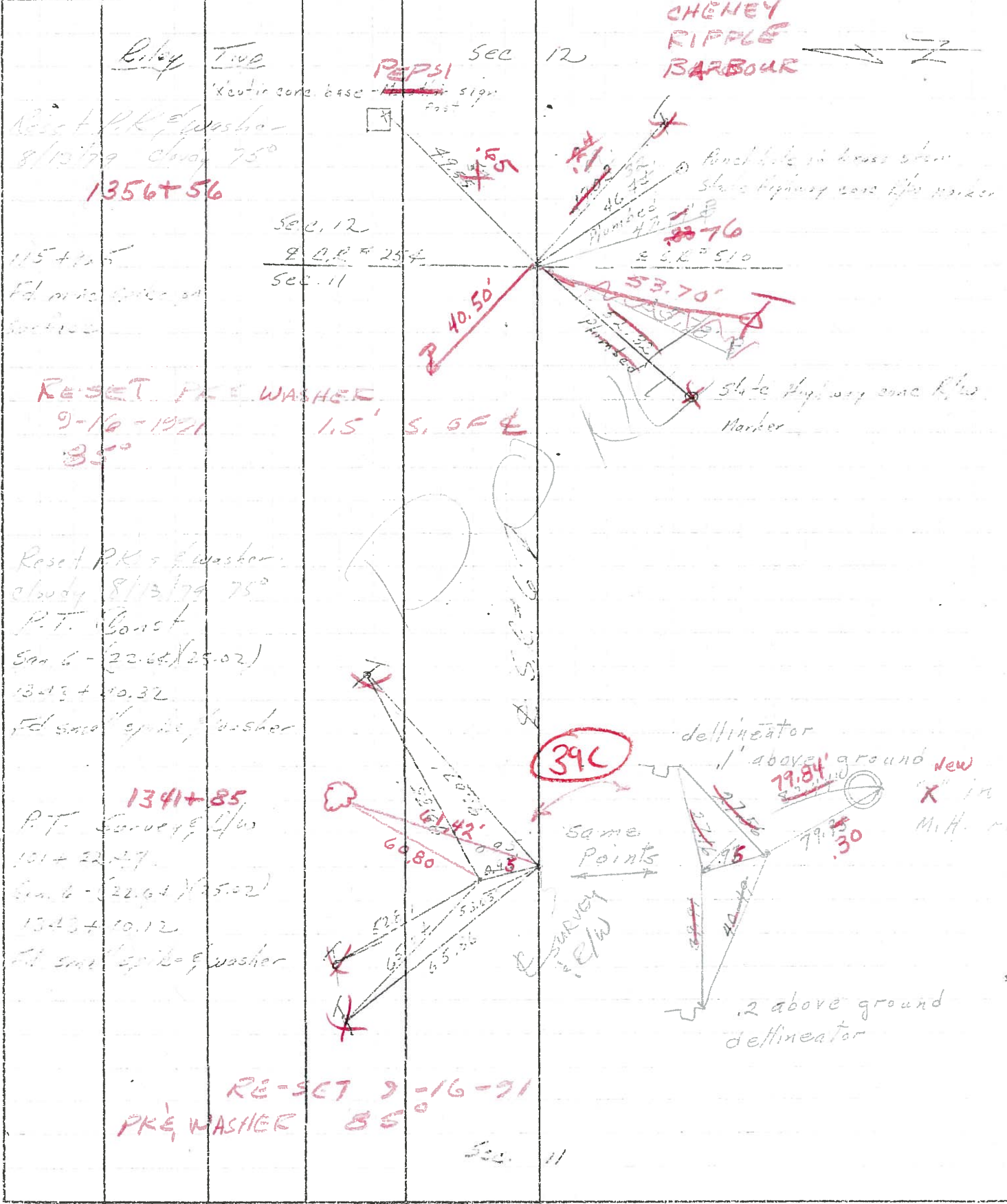
"B"  
 P.T. ☉ SURVEY E R/W  
 1343+40.12  
 SAN 6 (22.64) (25.02)  
 OLD STA. 101+22.47

PREVIOUS MONUMENTS  
 PK/WASHER  
 SM. SPK/WASHER

PERSONNEL	TITLE	PERSONNEL	TITLE
Cronin		Schneider	
Feb		Masse	
Barbour		Barbour	

COUNTY Sandwich DATE 7/29/75  
 S. R. 56 WEATHER Sunny  
 SEC. I - Fremont - East TEMP. 84°

DESCRIPTION Ties for Control Points JOB NO. \_\_\_\_\_



PERSONNEL	TITLE	PERSONNEL	TITLE
Cronin		Schneider	
Ash		Mosser	
Geyman		Barbour	

COUNTY Sandusky DATE 7/29/75  
 S. R. # 6 WEATHER sunny  
 SEC. "I" - Fremont - East TEMP. 84°

DESCRIPTION Ties for Control Points JOB NO. \_\_\_\_\_

