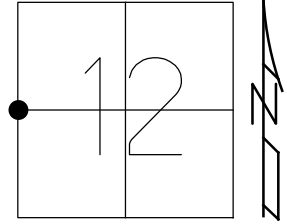


O.D.O.T. DISTRICT 2 SURVEY OFFICE (USE ONLY)

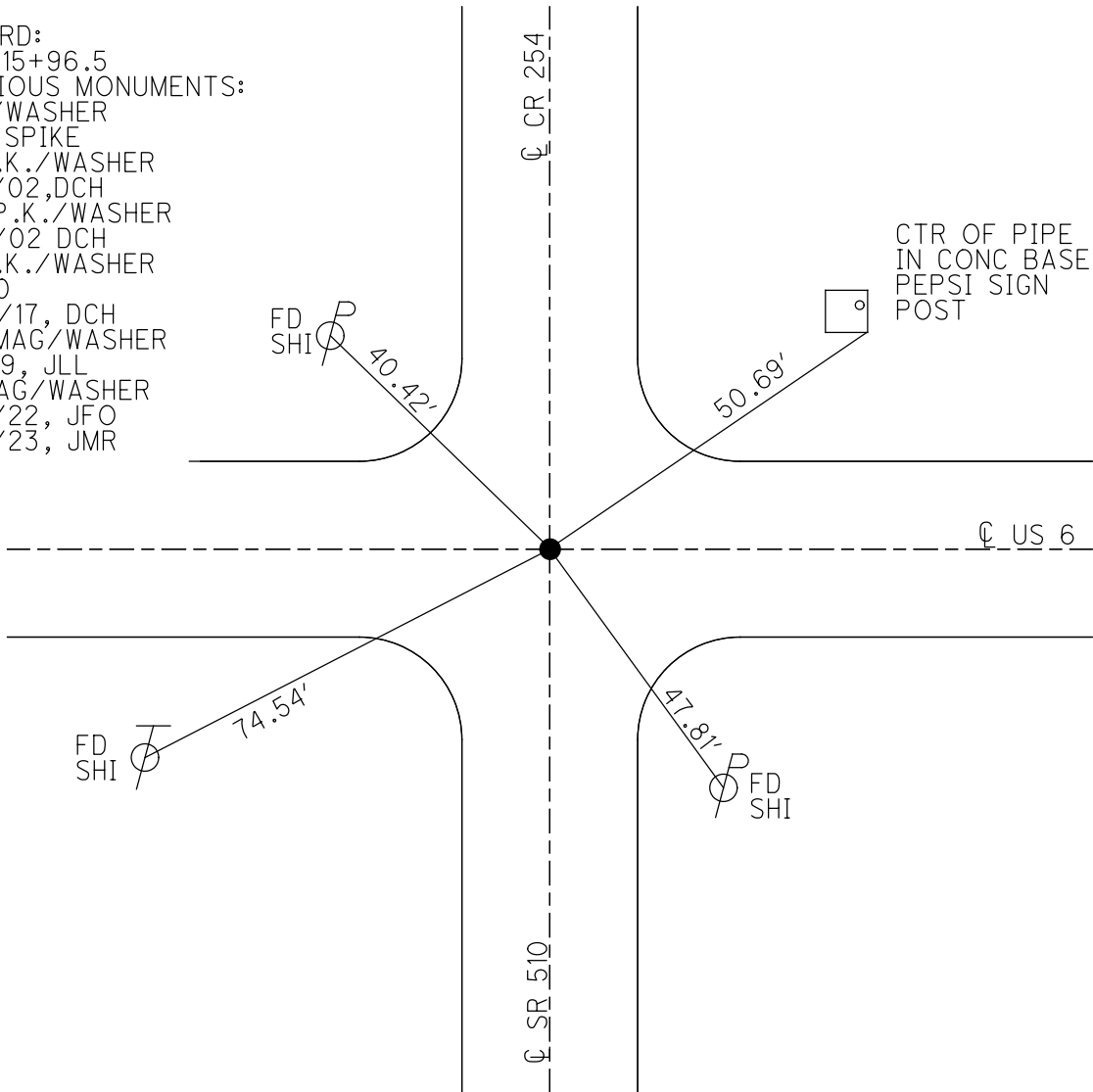
PERSONNEL \_\_\_\_\_ REFERENCE NO. 40 SHEET 12 OF 34  
 NOTES LEU DATE 8/1/18 ROUTE US 6  
 H.C. LEU WEATHER CLOUDY COUNTY SANDUSKY  
 R.C. TRENKA TEMP. 76° TOWNSHIP RILEY  
 DWG BY AUBLE PID PAVETRAIN SECTION 12  
 T 5 N R 16 E

TYPE MONUMENT P.K./WASHER  
 ON SURFACE - ~~BELOW~~ ON  
 OFFSET Q PAVEMENT 1.5' ~~ET~~ : RT  
- TO - EDGE PAVEMENT  
 STATION: 1356+56



HORZ. DATUM: NAD83 (2011) GEOID: 2012A  
 GRID: NORTHING: 634963.061 EASTING: 1838735.931

- RECORD:  
 STA 115+96.5  
 PREVIOUS MONUMENTS:  
 P.K./WASHER  
 MINE SPIKE  
 FD P.K./WASHER  
 3/16/02, DCH  
 SET P.K./WASHER  
 6/10/02 DCH  
 FD P.K./WASHER  
 REF40  
 11/22/17, DCH  
 SET MAG/WASHER  
 8-2-19, JLL  
 FD MAG/WASHER  
 2/10/22, JFO  
 1/20/23, JMR



O.D.O.T. DISTRICT 2 SURVEY OFFICE (USE ONLY)

PERSONNEL

REFERENCE NO. 40

SHEET 12 OF 34

NOTES LEU  
 H.C. LEU  
 R.C. TRENKA

DATE 8/1/18  
 WEATHER CLOUDY  
 TEMP. 76°

ROUTE US 6  
 COUNTY SANDUSKY  
 TOWNSHIP RILEY  
 SECTION 12  
 T 5 N R 16 E

DWG BY AUBLE PID 95769

TYPE MONUMENT P.K./WASHER

ON SURFACE - ~~BELOW~~ ON

OFFSET  $\odot$  PAVEMENT 1.5' ~~LT~~ : RT  
- TO - EDGE PAVEMENT

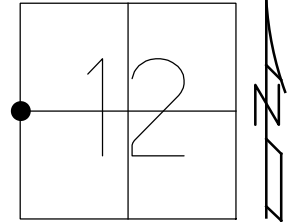
STATION: 1356+56

HORZ.DATUM: NAD83 (2011)

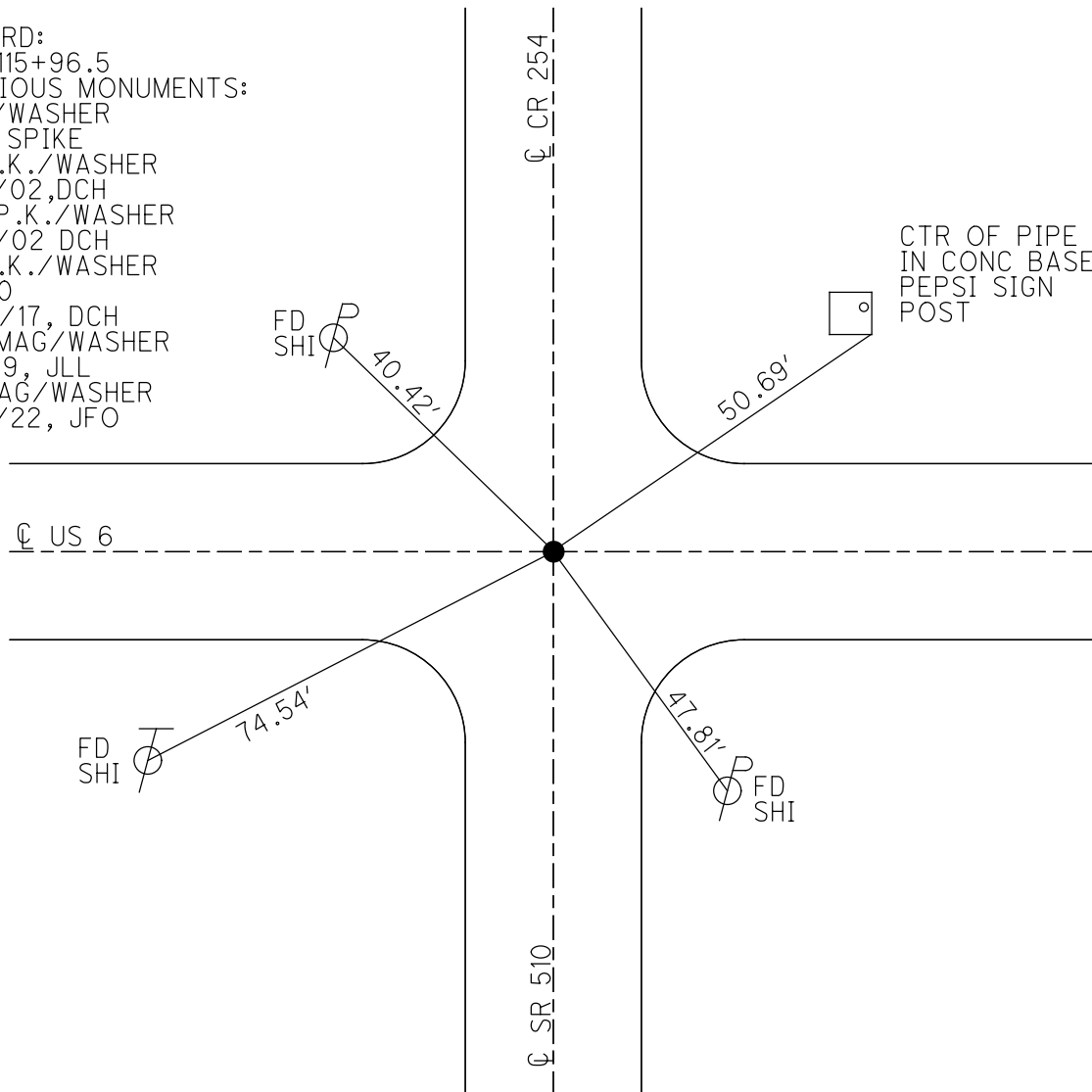
GEOID: 2012A

GRID: NORTHING: 634963.061

EASTING: 1838735.931



RECORD:  
 STA 115+96.5  
 PREVIOUS MONUMENTS:  
 P.K./WASHER  
 MINE SPIKE  
 FD P.K./WASHER  
 3/16/02, DCH  
 SET P.K./WASHER  
 6/10/02 DCH  
 FD P.K./WASHER  
 REF40  
 11/22/17, DCH  
 SET MAG/WASHER  
 8-2-19, JLL  
 FD MAG/WASHER  
 2/10/22, JFO



O.D.O.T. DISTRICT 2 SURVEY OFFICE (USE ONLY)

PERSONNEL

REFERENCE NO. 40

SHEET 12 OF 34

NOTES LEU  
 H.C. LEU  
 R.C. TRENKA

DATE 8/1/18  
 WEATHER CLOUDY  
 TEMP. 76°

ROUTE US 6  
 COUNTY SANDUSKY  
 TOWNSHIP RILEY  
 SECTION 12  
 T 5 N R 16 E

DWG BY AUBLE PID 95769

TYPE MONUMENT P.K./WASHER

ON SURFACE - ~~BELOW~~ ON

OFFSET  $\varnothing$  PAVEMENT 1.5'  $\pm$  : RT

- TO - EDGE PAVEMENT

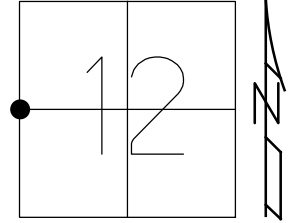
STATION: 1356+56

HORZ. DATUM: NAD83 (2011)

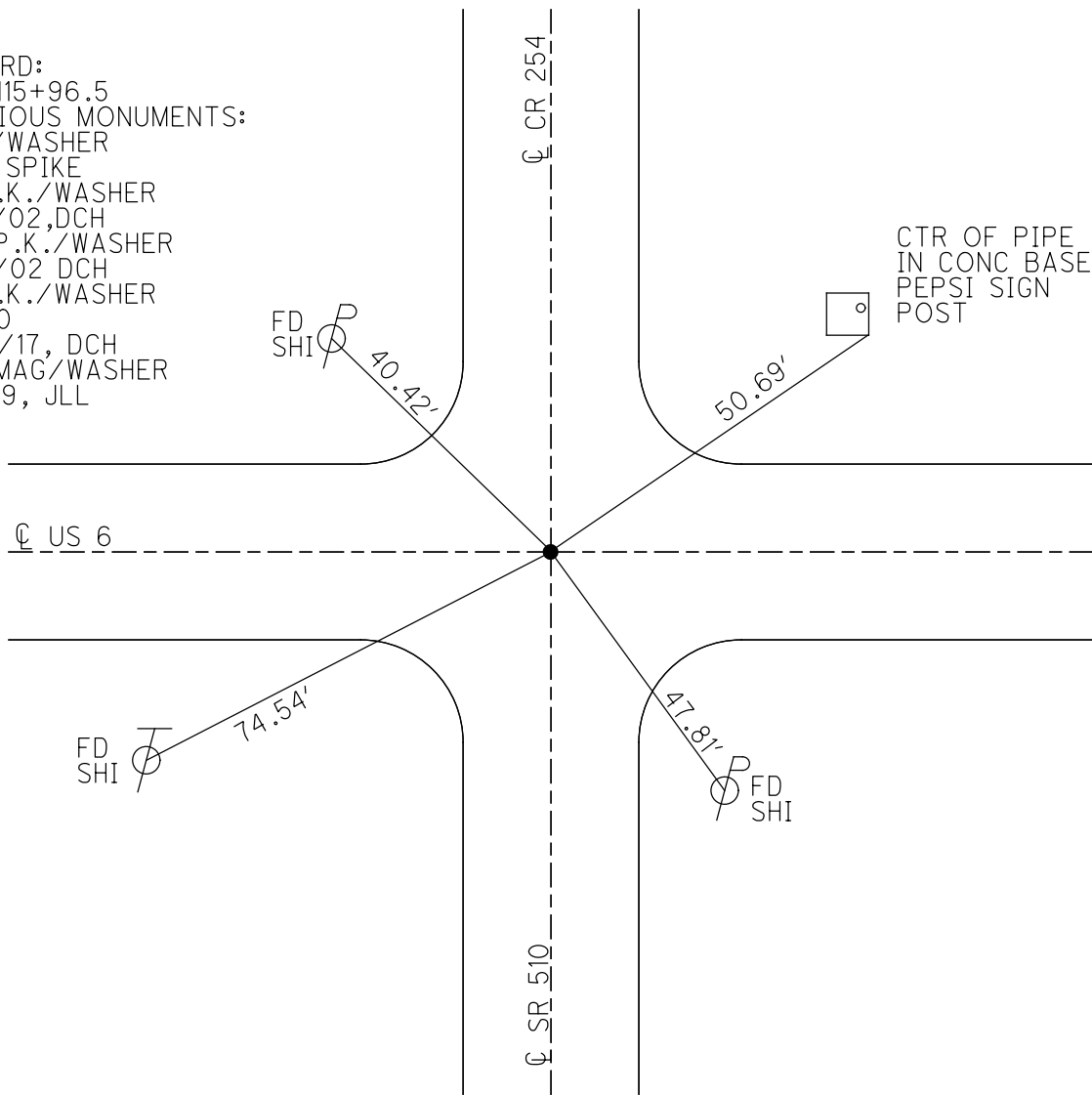
GEOID: 2012A

GRID: NORTHING: 634963.061

EASTING: 1838735.931



RECORD:  
 STA 115+96.5  
 PREVIOUS MONUMENTS:  
 P.K./WASHER  
 MINE SPIKE  
 FD P.K./WASHER  
 3/16/02, DCH  
 SET P.K./WASHER  
 6/10/02, DCH  
 FD P.K./WASHER  
 REF40  
 11/22/17, DCH  
 SET MAG/WASHER  
 8-2-19, JLL



**O.D.O.T. DISTRICT 2 SURVEY OFFICE (USE ONLY)**

PERSONNEL \_\_\_\_\_ REFERENCE NO. 40 SHEET 11 OF 31

NOTES ROUSOS \_\_\_\_\_ DATE 03/16/02 ROUTE US 6  
 H.C. VAN DUSEN \_\_\_\_\_ WEATHER WINDY COUNTY SANDUSKY  
 R.C. MOSSER \_\_\_\_\_ TEMP. 28° TOWNSHIP RILEY  
 \_\_\_\_\_ HOMAN \_\_\_\_\_ SECTION 12  
 T 5 N R 16 E

TYPE MONUMENT \_\_\_\_\_ PK/WASHER \_\_\_\_\_

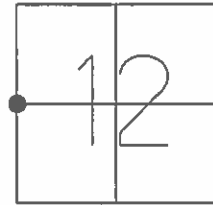
ON SURFACE - ~~BELOW~~ \_\_\_\_\_ ON \_\_\_\_\_

~~LEFT~~ - C PAV'T - RIGHT 1.0'

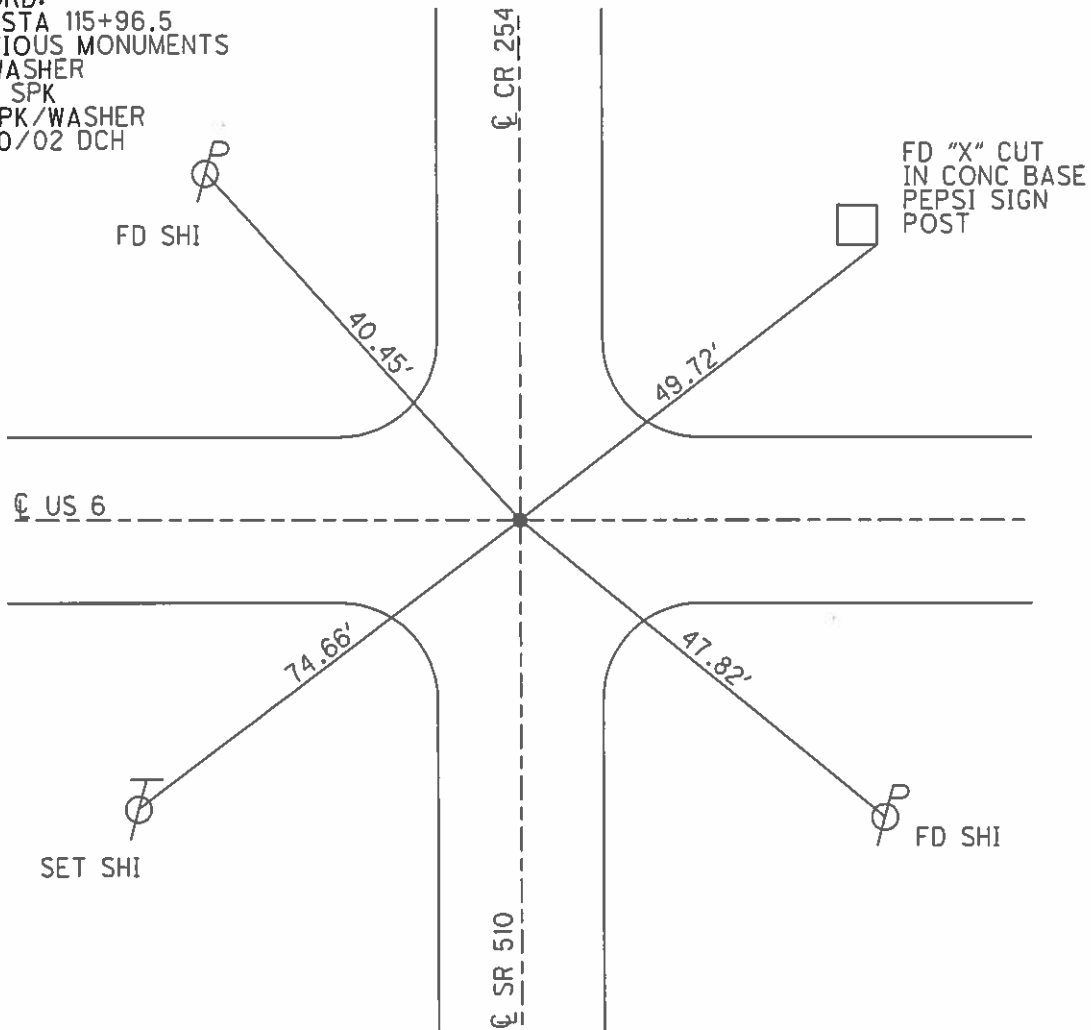
\_\_\_\_\_ TO \_\_\_\_\_ EDGE PAVEMENT

S.L.M. \_\_\_\_\_ 1356+56 \_\_\_\_\_

GRID: NORTHING: \_\_\_\_\_ EASTING: \_\_\_\_\_



RECORD:  
 OLD STA 115+96.5  
 PREVIOUS MONUMENTS  
 PK/WASHER  
 MINE SPK  
 SET PK/WASHER  
 06/10/02 DCH



O.D.O.T. DISTRICT 2 SURVEY OFFICE

PERSONNEL

REFERENCE NO. 40

SHEET 9 OF 27

NOTES ROUSOS

DATE 3/16/02

ROUTE ~~SR~~<sup>US</sup> 6

H.C. VAN DUSEN

WEATHER WINDY

COUNTY SANDUSKY

R.C. MOSSER

TEMP. 28°

TOWNSHIP RILEY

HOMAN

SECTION 12

T 5 N R 16 E

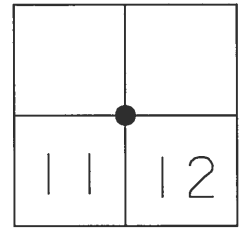
TYPE MONUMENT PK/WASHER

ON SURFACE - ~~BELOW~~ ON

~~LEFT~~ - Q PAV'T - RIGHT 1.0'

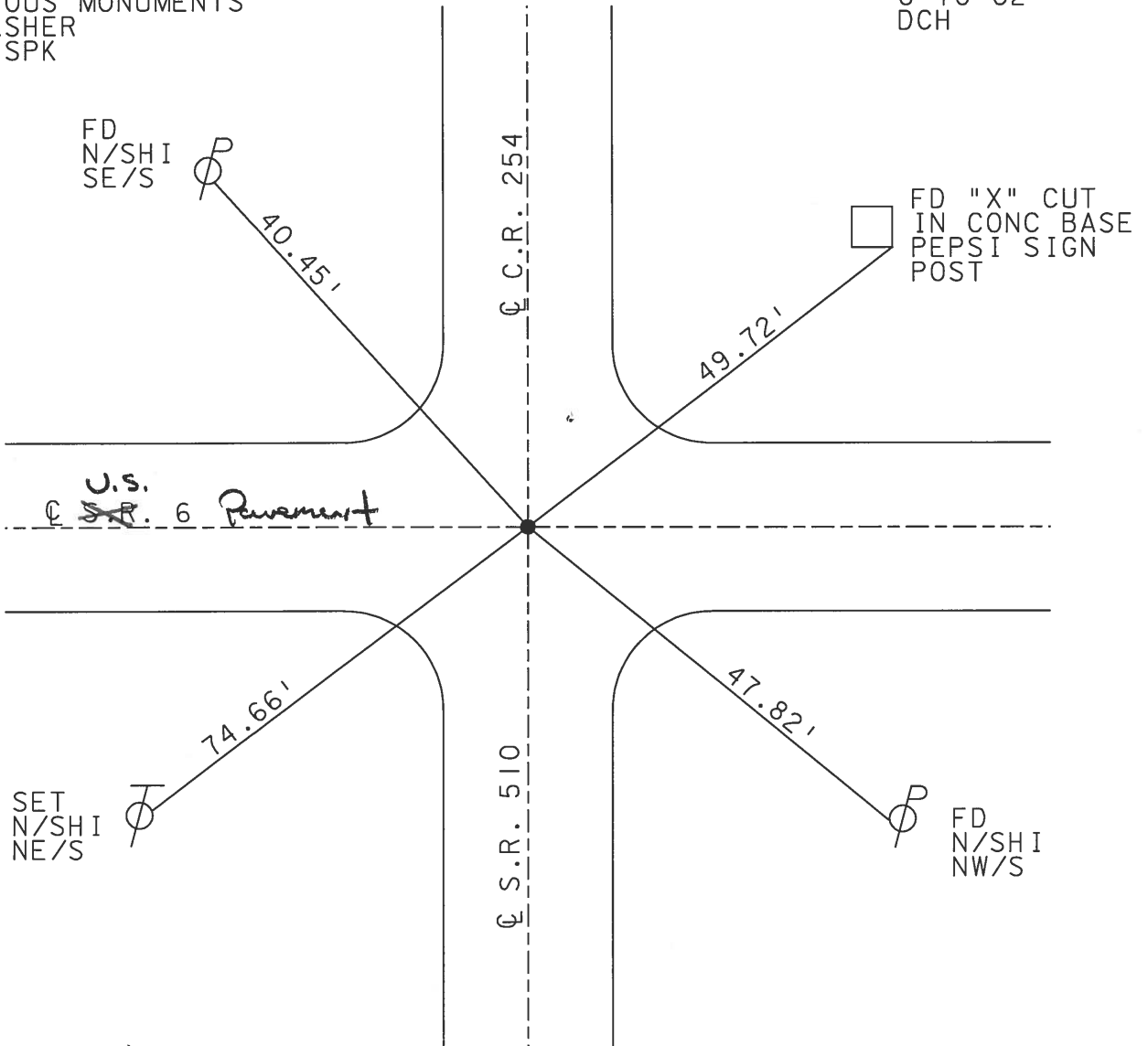
TO EDGE PAVEMENT

S.L.M. 1356+56



OLD STA 115+96.5  
PREVIOUS MONUMENTS  
PK/WASHER  
MINE SPK

SET PK/WASHER  
6-10-02  
DCH



# O.D.O.T. DISTRICT 2 SURVEY OFFICE

PERSONNEL \_\_\_\_\_

REFERENCE NO. 40

SHEET 21 OF 39

NOTES CHENEY

H.C. RIPPLE

DATE 3-16-1991

ROUTE 6

R.C. BARBOUR

WEATHER SUNNY

COUNTY SANDUSKY

TEMP. 85°

TOWNSHIP RILEY

SECTION 12

T5N R16E

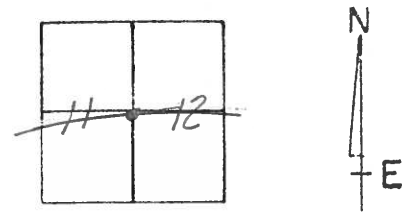
TYPE MONUMENT PK/WASHER

ON SURFACE - BELOW

LEFT - ☉ PAV'T. - RIGHT —

— TO — EDGE PAVEMENT

S.L.M. 1356+56

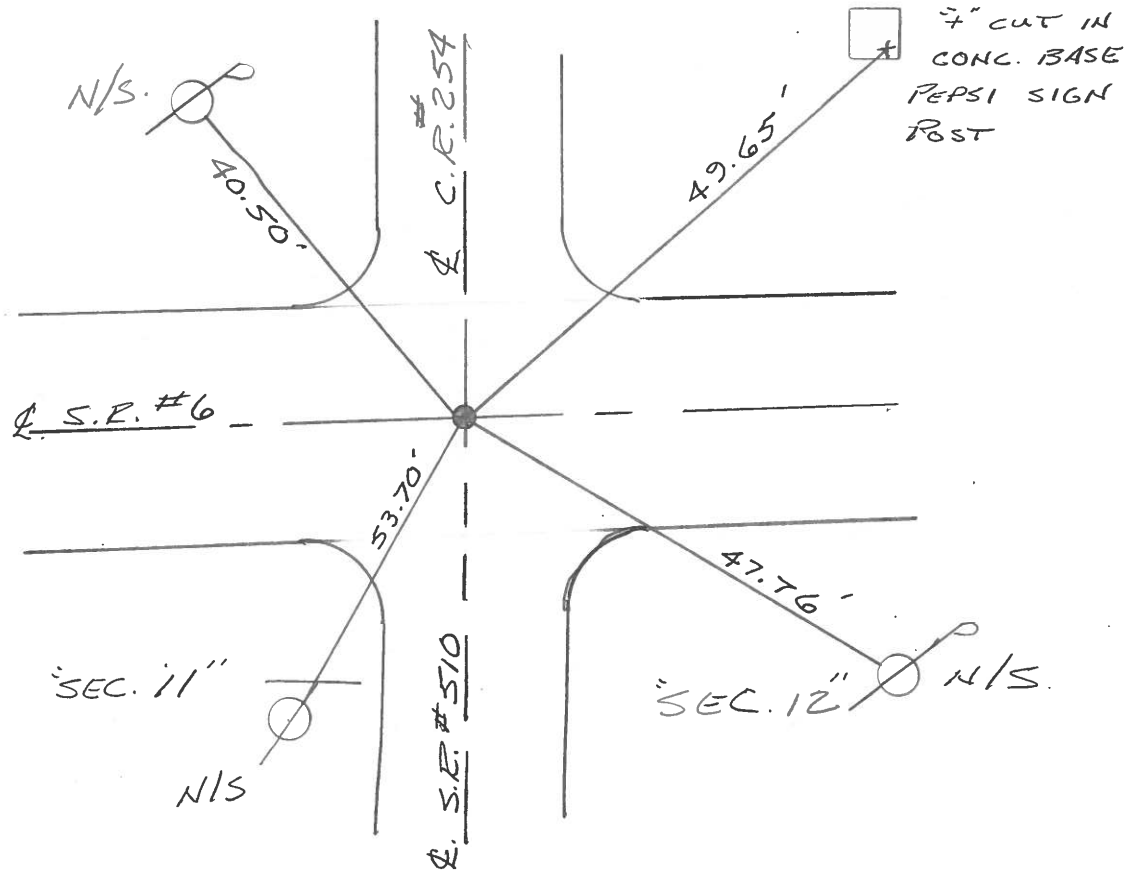


OLD STATION = 115+96.5

PREVIOUS MONUMENTS

P.K/WASHER

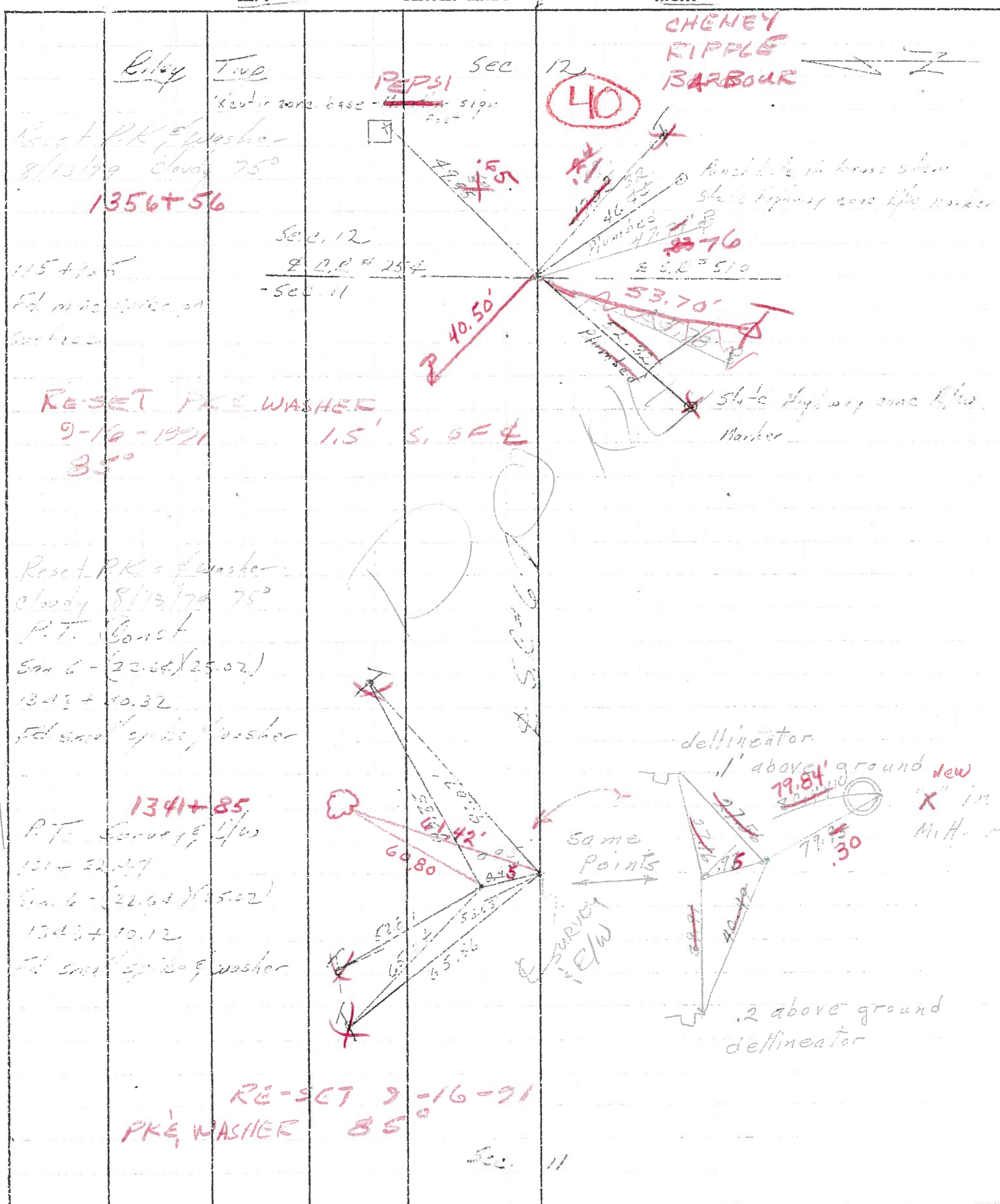
MINE SPK.



PERSONNEL	TITLE	PERSONNEL	TITLE
Cramer		Schneider	
Leh		Masse	
Barbour		Barbour	

COUNTY Sanduska DATE 7/29/75  
 S. R. 6 WEATHER sunny  
 SEC. I - Fremont - East TEMP. 84°

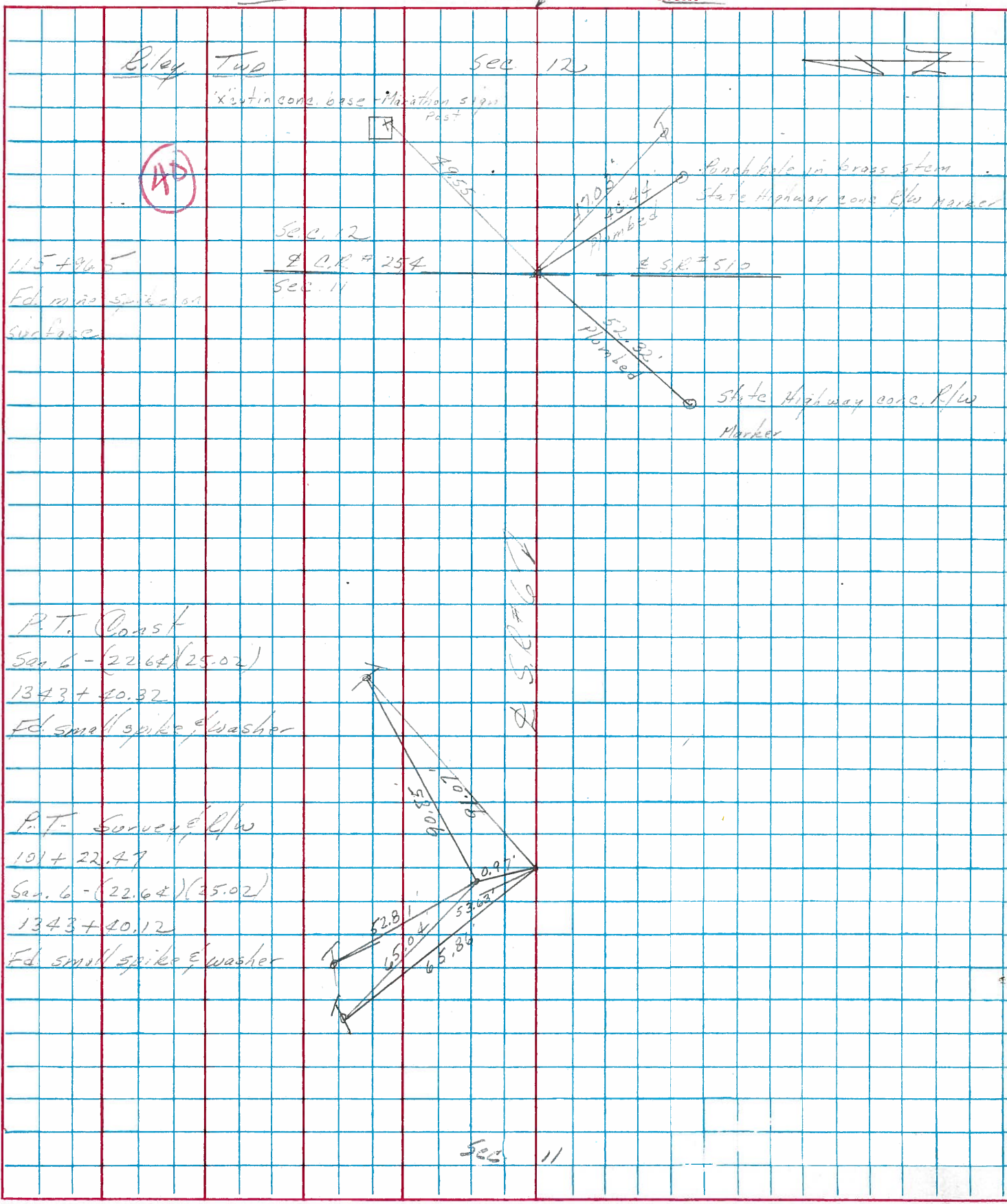
DESCRIPTION Ties for Control Points JOB NO. \_\_\_\_\_



PERSONNEL	TITLE	PERSONNEL	TITLE
Cronin		Schneider	
Ash		Mosser	
Geyman		Barbour	

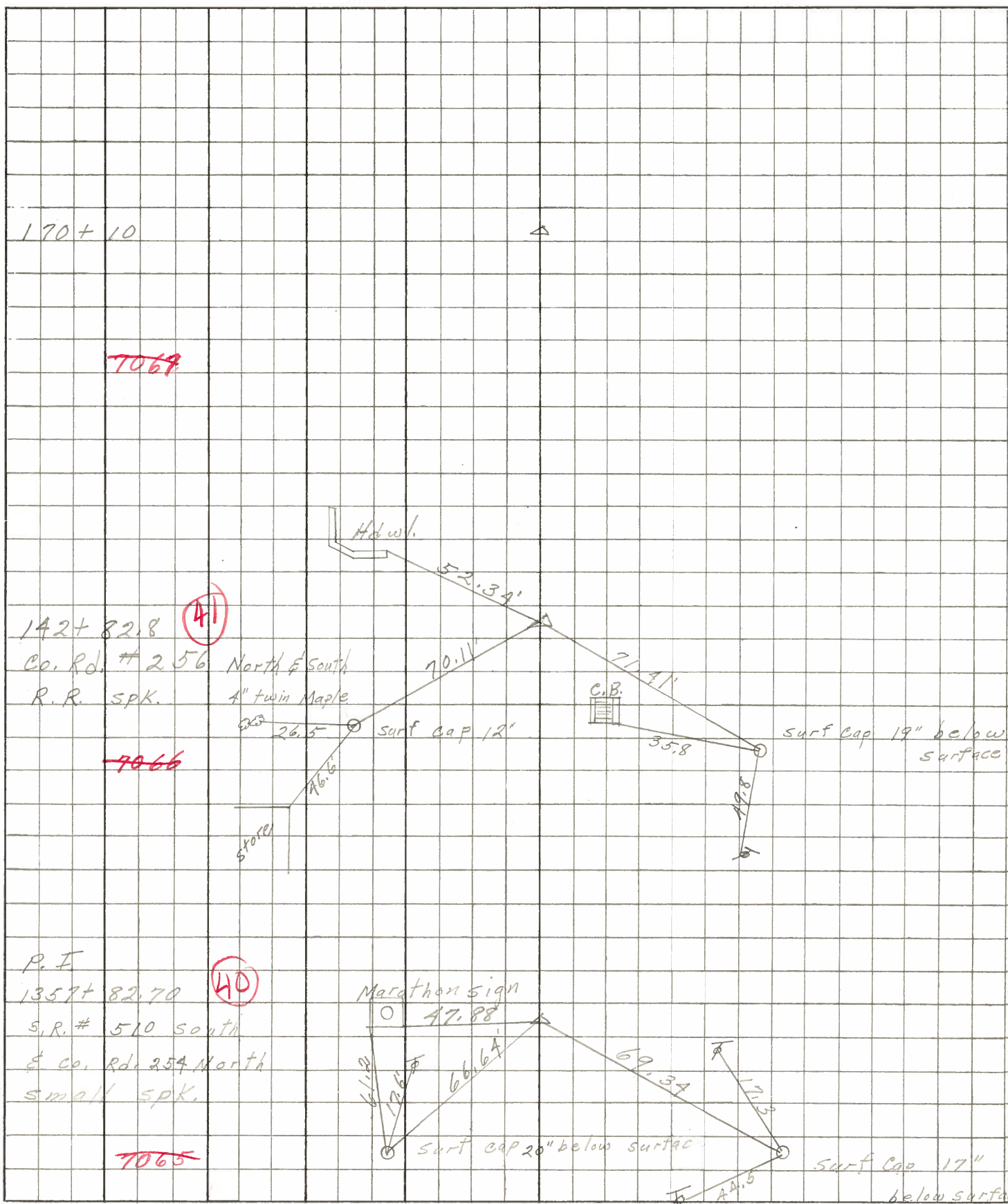
COUNTY Sandusky DATE 7/29/75  
 S. R. # 6 WEATHER Sunny  
 SEC. I - Fremont-East TEMP. 84°

DESCRIPTION Ties for Control Points JOB NO. \_\_\_\_\_





PERSONNEL TITLE PERSONNEL TITLE COUNTY Sandusky DATE Dec-1967  
Schneider \_\_\_\_\_ Potts \_\_\_\_\_  
Mosser \_\_\_\_\_ \_\_\_\_\_  
Barbour \_\_\_\_\_ \_\_\_\_\_  
Redding \_\_\_\_\_ \_\_\_\_\_  
 S. R. U.S. # 6 WEATHER \_\_\_\_\_  
 SEC. Fremont-East TEMP. \_\_\_\_\_  
 DESCRIPTION Ties for Control Points JOB NO. \_\_\_\_\_



PERSONNEL TITLE PERSONNEL TITLE

Schneider  
Mosser  
Cronin  
Barbour

COUNTY Sandusky

DATE 3-10-63

S. R. U.S. #6

WEATHER Cloudy-wind

SEC. 25.76

TEMP. 25°

DESCRIPTION Ties for Control Points of Bridge

JOB NO.

LEFT

CENTER LINE

RIGHT

1364+00

1.00'

1361+96.25

N. & S. on E. side tree

@ 8" Elm

63.86'

E. Boundary

50'

39.75'

1361+46.25

1.00'

86.30'

@ 20" willow

116.50'

E. Boundary

116.50'

E. Boundary

1360+29.75

1.00'

@ 10" Ash

88.46'

1.00'

41.54'

N. & S. on W. side pole

88.09'

@ 30" Ash

1359+79.75

90°00'

P.I.

1357+82.70

1.00'

40

