

O.D.O.T. DISTRICT 2 SURVEY OFFICE (USE ONLY)

PERSONNEL _____

REFERENCE NO. 41

SHEET 13 OF 34

NOTES LEU

DATE 8/1/18

ROUTE US 6

H.C. LEU

WEATHER CLOUDY

COUNTY SANDUSKY

R.C. TRENKA

TEMP. 76°

TOWNSHIP RILEY

SECTION 12

DWG BY AUBLE

PID PAVETRAIN

T 5 N R 16 E

TYPE MONUMENT P.K./WASHER

~~ON SURFACE~~ - BELOW 1 1/2"

OFFSET ϕ PAVEMENT 0.6' LT : ~~RT~~

- TO - EDGE PAVEMENT

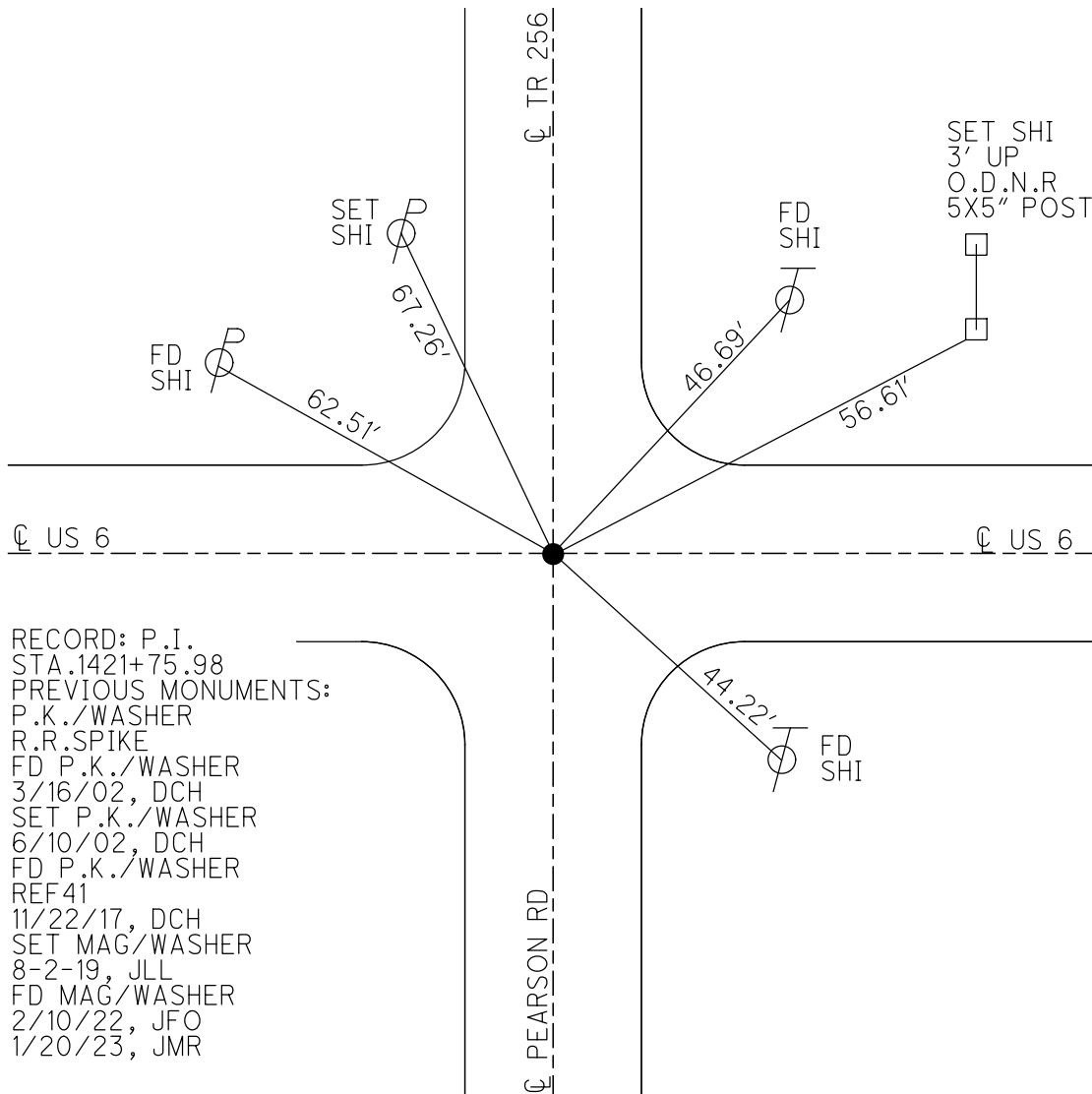
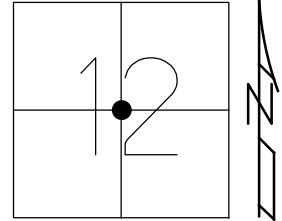
STATION: 1383+29

HORZ.DATUM: NAD83 (2011)

GEOID: 2012A

GRID: NORTHING: 635077.737

EASTING: 1841414.113

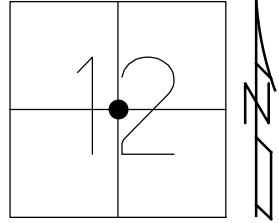


RECORD: P.I.
 STA.1421+75.98
 PREVIOUS MONUMENTS:
 P.K./WASHER
 R.R.SPIKE
 FD P.K./WASHER
 3/16/02, DCH
 SET P.K./WASHER
 6/10/02, DCH
 FD P.K./WASHER
 REF41
 11/22/17, DCH
 SET MAG/WASHER
 8-2-19, JLL
 FD MAG/WASHER
 2/10/22, JFO
 1/20/23, JMR

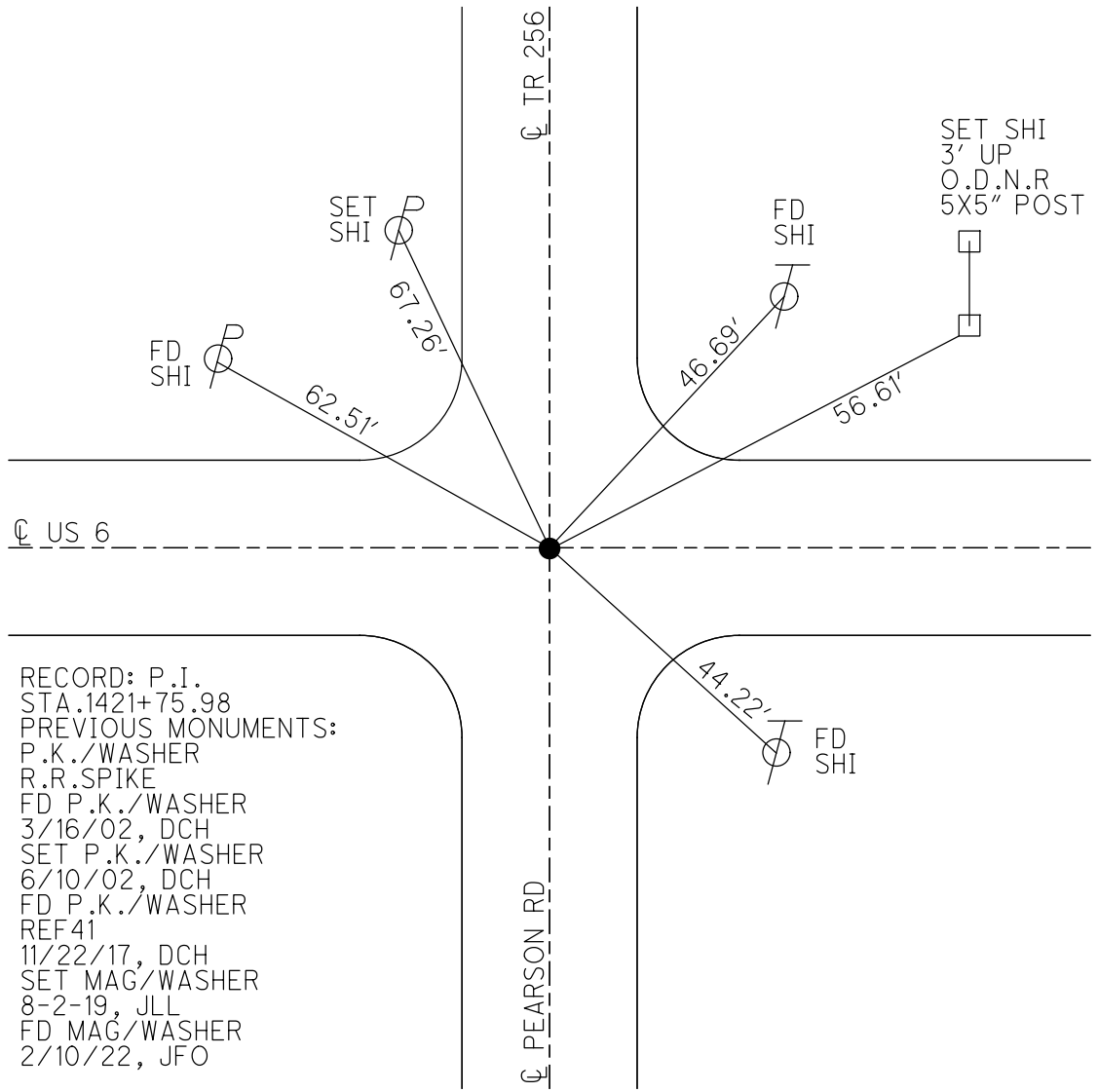
O.D.O.T. DISTRICT 2 SURVEY OFFICE (USE ONLY)

PERSONNEL _____ REFERENCE NO. 41 SHEET 13 OF 34
 NOTES LEU DATE 8/1/18 ROUTE US 6
 H.C. LEU WEATHER CLOUDY COUNTY SANDUSKY
 R.C. TRENKA TEMP. 76° TOWNSHIP RILEY
 DWG BY AUBLE PID 95769 SECTION 12
 T 5 N R 16 E

TYPE MONUMENT P.K./WASHER
~~ON SURFACE~~ - BELOW 1 1/2"
 OFFSET \odot PAVEMENT 0.6' LT : ~~RT~~
 - TO - EDGE PAVEMENT
 STATION: 1383+29



HORZ. DATUM: NAD83 (2011) GEOID: 2012A
 GRID: NORTHING: 635077.737 EASTING: 1841414.113



RECORD: P.I.
 STA. 1421+75.98
 PREVIOUS MONUMENTS:
 P.K./WASHER
 R.R.SPIKE
 FD P.K./WASHER
 3/16/02, DCH
 SET P.K./WASHER
 6/10/02, DCH
 FD P.K./WASHER
 REF41
 11/22/17, DCH
 SET MAG/WASHER
 8-2-19, JLL
 FD MAG/WASHER
 2/10/22, JFO

O.D.O.T. DISTRICT 2 SURVEY OFFICE (USE ONLY)

PERSONNEL

REFERENCE NO. 41

SHEET 13 OF 34

NOTES LEU

DATE 8/1/18

ROUTE US 6

H.C. LEU

WEATHER CLOUDY

COUNTY SANDUSKY

R.C. TRENKA

TEMP. 76°

TOWNSHIP RILEY

SECTION 12

DWG BY AUBLE

PID 95769

T 5 N R 16 E

TYPE MONUMENT P.K./WASHER

~~ON SURFACE~~ - BELOW 1 1/2"

OFFSET Q PAVEMENT 0.6' LT : ~~RT~~

- TO - EDGE PAVEMENT

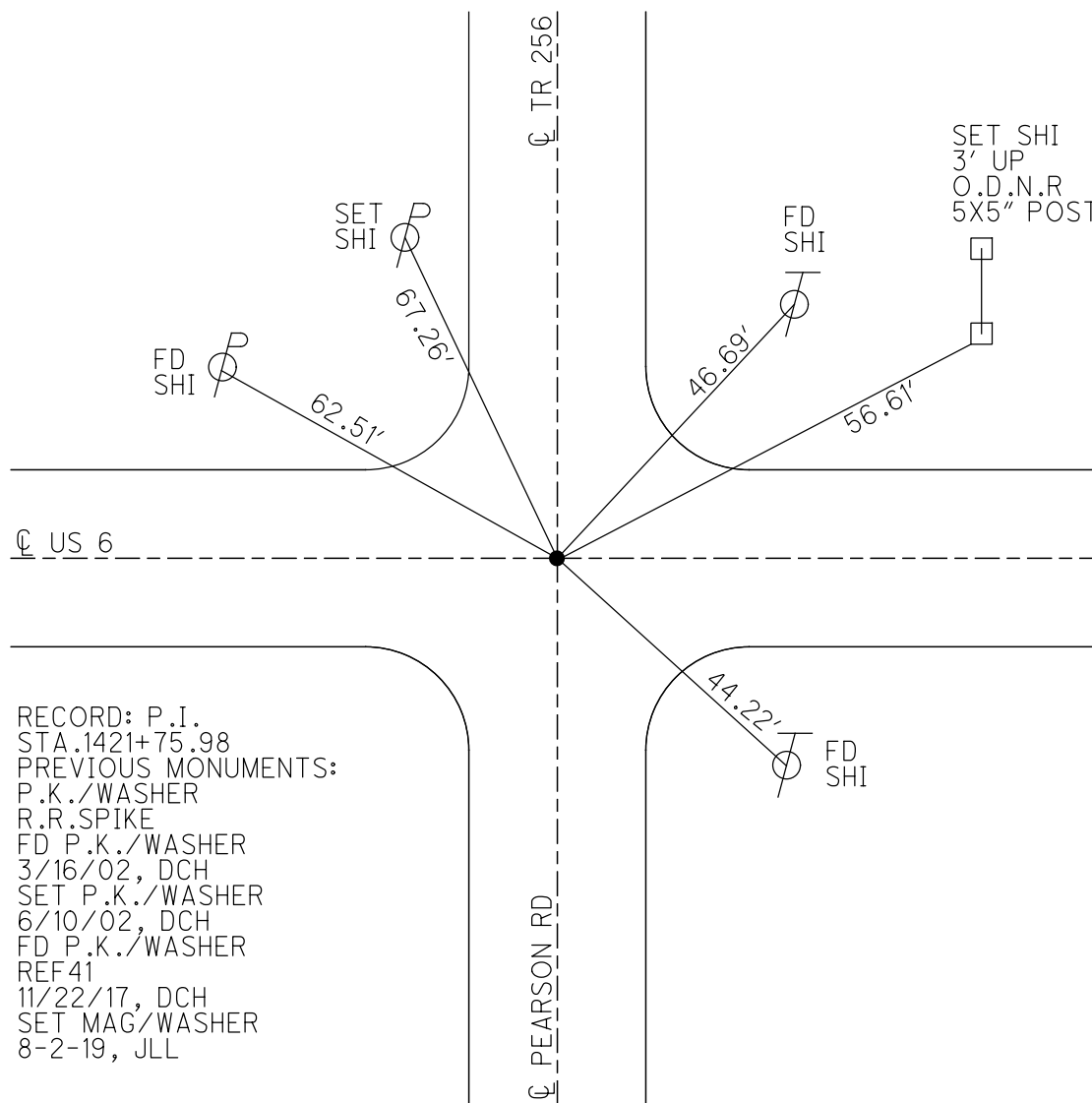
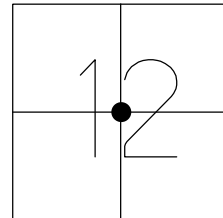
STATION: 1383+29

HORZ.DATUM: NAD83 (2011)

GEOID: 2012A

GRID: NORTHING: 635077.737

EASTING: 1841414.113

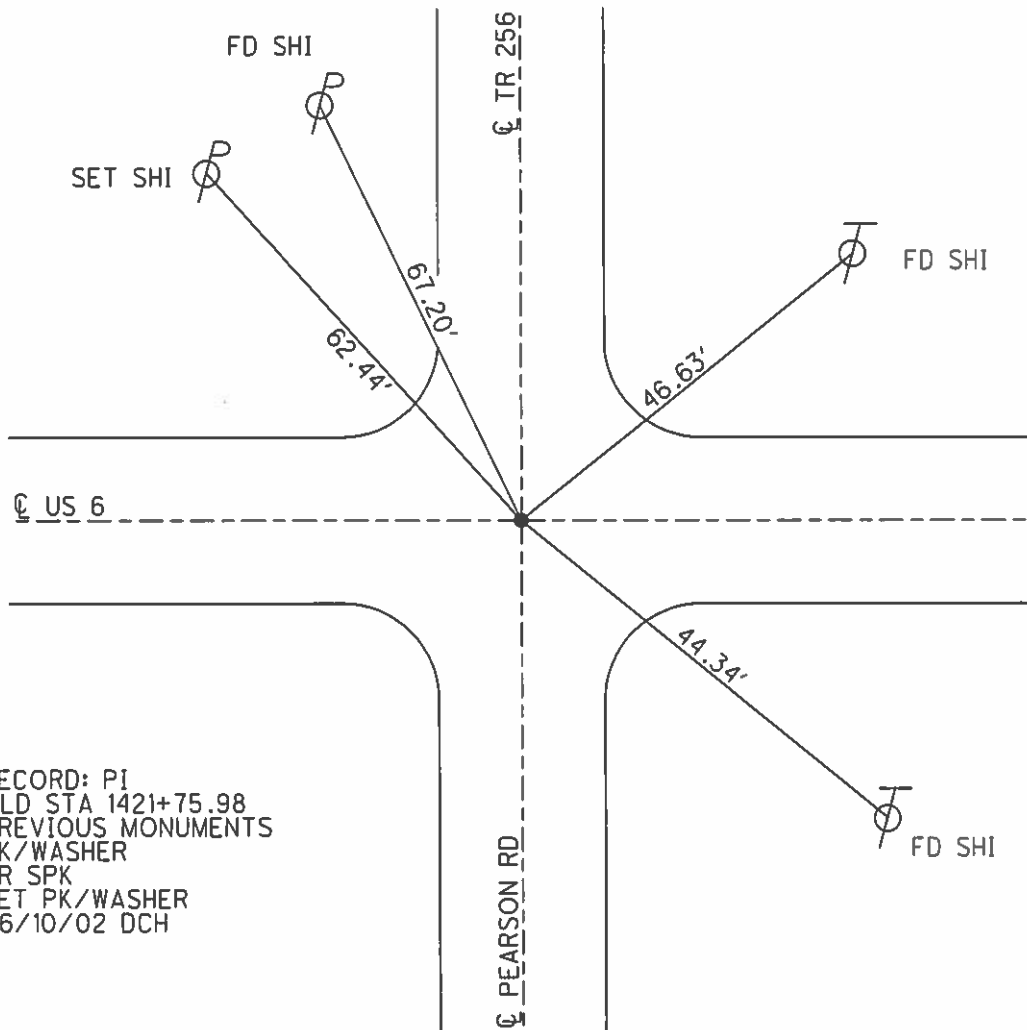
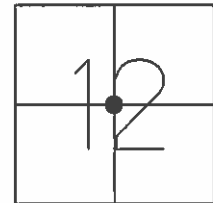


RECORD: P.I.
 STA.1421+75.98
 PREVIOUS MONUMENTS:
 P.K./WASHER
 R.R.SPIKE
 FD P.K./WASHER
 3/16/02, DCH
 SET P.K./WASHER
 6/10/02, DCH
 FD P.K./WASHER
 REF41
 11/22/17, DCH
 SET MAG/WASHER
 8-2-19, JLL

O.D.O.T. DISTRICT 2 SURVEY OFFICE (USE ONLY)

PERSONNEL	REFERENCE NO.	41	SHEET	12	OF	31
NOTES	ROUSOS	DATE	03/16/02	ROUTE	US 6	
H.C.	VAN DUSEN	WEATHER	WINDY	COUNTY	SANDUSKY	
R.C.	MOSSER	TEMP.	28°	TOWNSHIP	RILEY	
	HOMAN			SECTION	12	
				T	5	N
				R	16	E

TYPE MONUMENT PK/WASHER
 ON SURFACE - ~~BELOW~~ ON
 LEFT - ☉ PAV'T - ~~RIGHT~~ 1.0'
- TO - EDGE PAVEMENT
 S.L.M. 1383+29
 GRID: NORTHING: - EASTING: -



RECORD: PI
 OLD STA 1421+75.98
 PREVIOUS MONUMENTS
 PK/WASHER
 RR SPK
 SET PK/WASHER
 06/10/02 DCH

O.D.O.T. DISTRICT 2 SURVEY OFFICE

PERSONNEL _____

REFERENCE NO. 41

SHEET 22 OF 39

NOTES CHENEY

H.C. RIPPLE

R.C. BARBOUR

DATE 9-16-1991

WEATHER SUNNY

TEMP. 85°

ROUTE 6

COUNTY SANDUSKY

TOWNSHIP RILEY

SECTION 12

T 5 N R 16 E

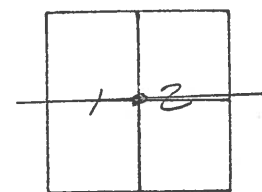
TYPE MONUMENT PK/WASHER

ON SURFACE - ~~BELOW~~

~~LEFT - & PAV'T. - RIGHT~~

TO EDGE PAVEMENT

S.L.M. 1383+29



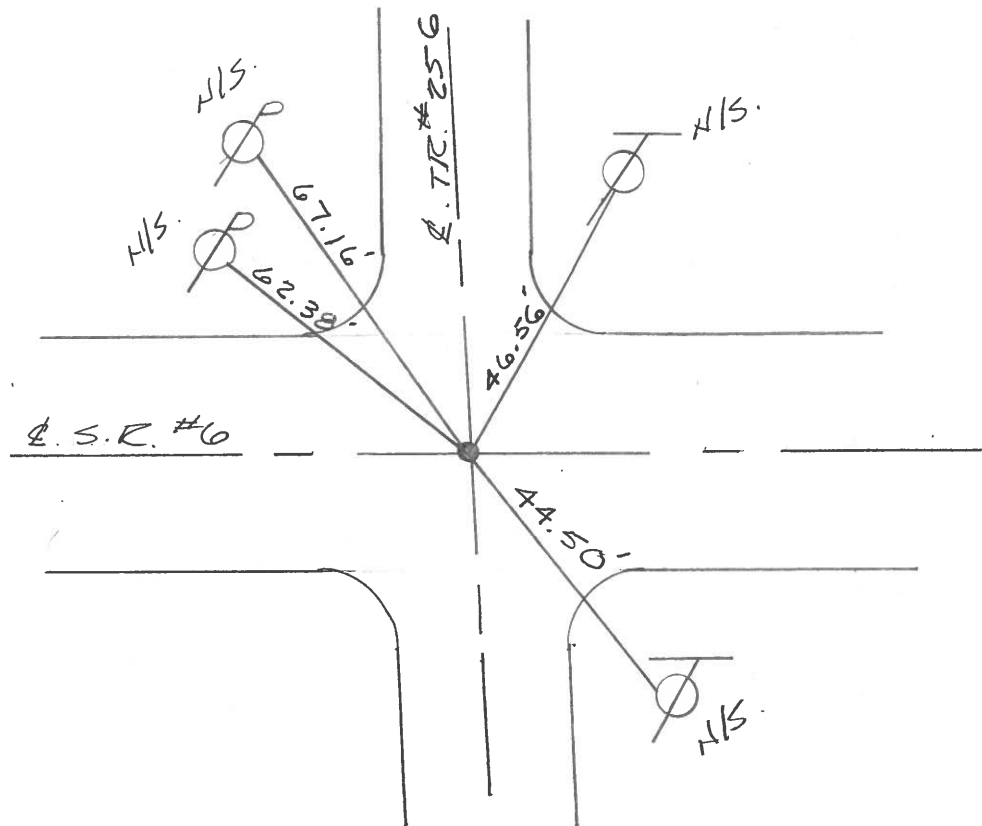
P.I.

OLD STATION: 142+75.98

PREVIOUS MONUMENTS

PK/WASHER

R.R. SPK.



Q.D.O.T. DISTRICT 2 SURVEY OFFICE

SHEET _____ OF _____

County Sandusky S.R. U.S. #6

Township Liley

Section 12

T 5 N, R 16 E

Personnel Cronin

Ripple

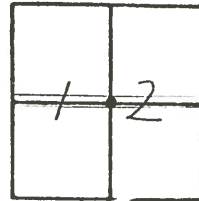
Geyman

Barbour

Date 9/24/84

Weather overcast

Temp. 65°



(41)

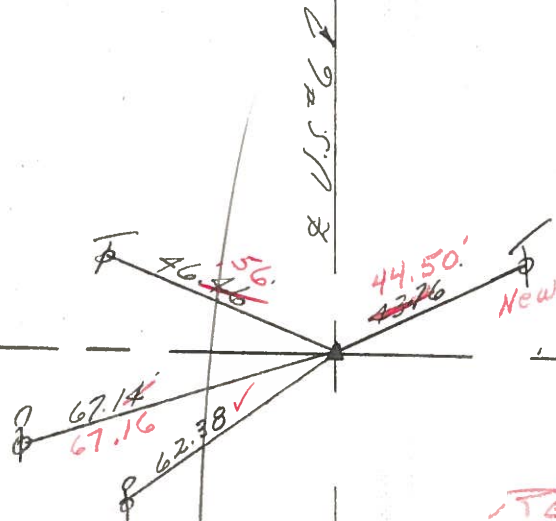
1383+29

4/03/91
40°

CHENEY
RIPPLE
BARBOUR



P.I.
142+75.98
set P.K. & washer atop
R.R. spike



RE-SET PK & WASH
9-16-1991 ON E.
85°

Q.D.O.T. DISTRICT 2 SURVEY OFFICE

SHEET _____ OF _____

County Sandusky S. R. U.S. #6

Date 9/24/84

Township Liley

Weather overcast

Section 12

Temp. 65°

T5N, R16E

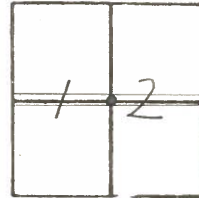
Personnel Cronin

Ripple

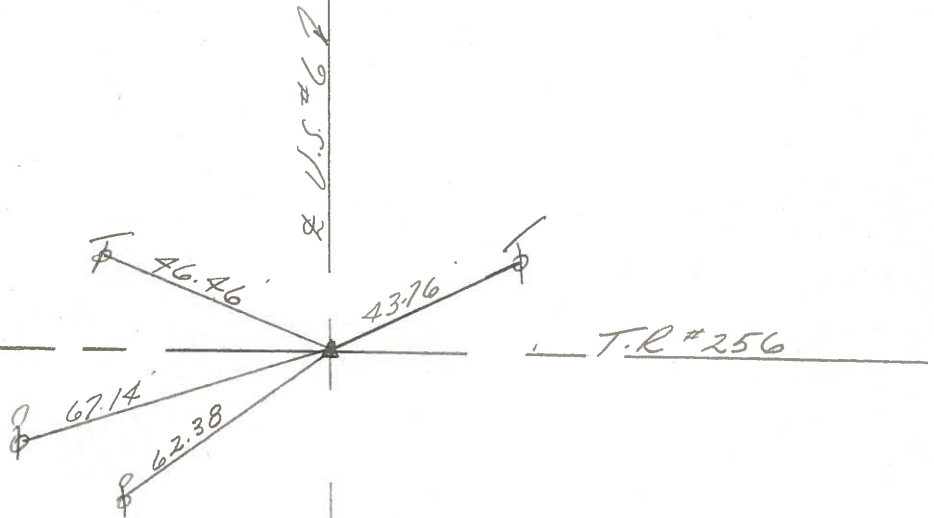
Geyman

Barbour

41



P.I.
142+75.98
set P.K. & washer atop
R.R. spike



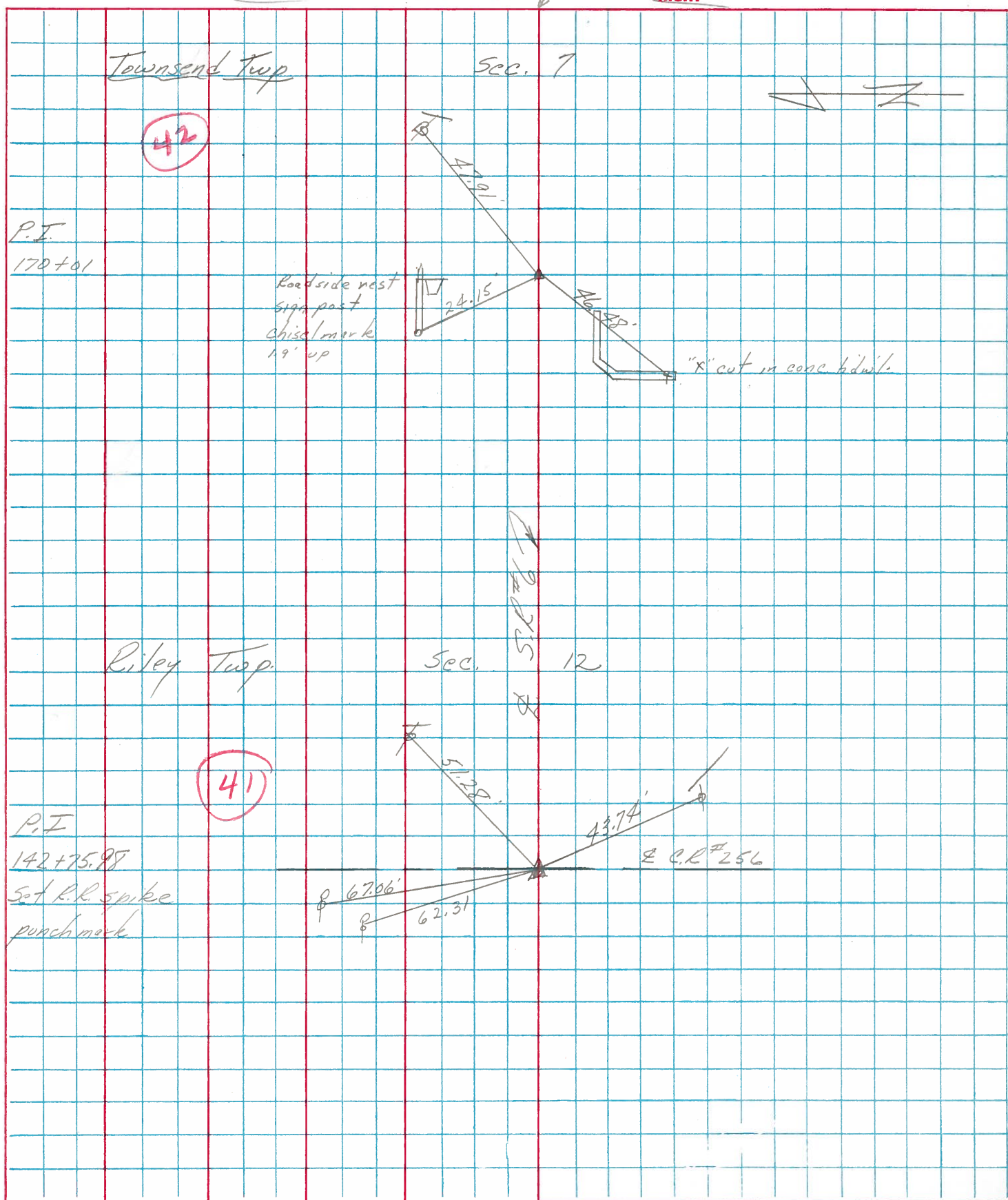


SHEET NO. 12
Tied 7/31/75
DATE drawn 7/30/75

PERSONNEL	TITLE	PERSONNEL	TITLE
<u>Cronin</u>		<u>Schneider</u>	
<u>Ash</u>		<u>Mosser</u>	
<u>Geyman</u>		<u>Barbour</u>	

COUNTY Sandusky
 S. R. #6 WEATHER sunny
 SEC. "I" - Fremont-East TEMP. 78°

DESCRIPTION Ties for Control Points JOB NO. _____



PERSONNEL	TITLE	PERSONNEL	TITLE	COUNTY	DATE
Schneider		Potts		Sandusky	Dec-1967
Mosser				S. R. U.S.# 6	WEATHER
Barbour				SEC. Fremont-East	TEMP.
Redding					

DESCRIPTION Ties for Control Points JOB NO. _____

