

O.D.O.T. DISTRICT 2 SURVEY OFFICE (USE ONLY)

PERSONNEL

REFERENCE NO. 41 A

SHEET 14 OF 34

NOTES MILLER

DATE 12/28/23

ROUTE US 6

H.C. RHOADES

WEATHER RAIN

COUNTY SANDUSKY

R.C. MILLER

TEMP. 44°

TOWNSHIP TOWNSEND

SECTION 7

DWG BY RHOADES

PID PAVETRAIN

T 5 N R 16 E

TYPE MONUMENT MAG/WASHER

ON SURFACE - ~~BELOW~~ ON

OFFSET \varnothing PAVEMENT 1.0' ~~RT~~ : RT

8' TO LT EDGE PAVEMENT

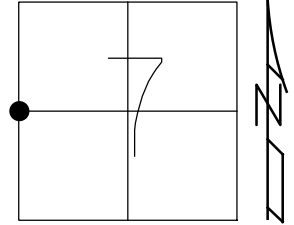
STATION: 1410+42

HORIZ.DATUM: NAD83 (2011)

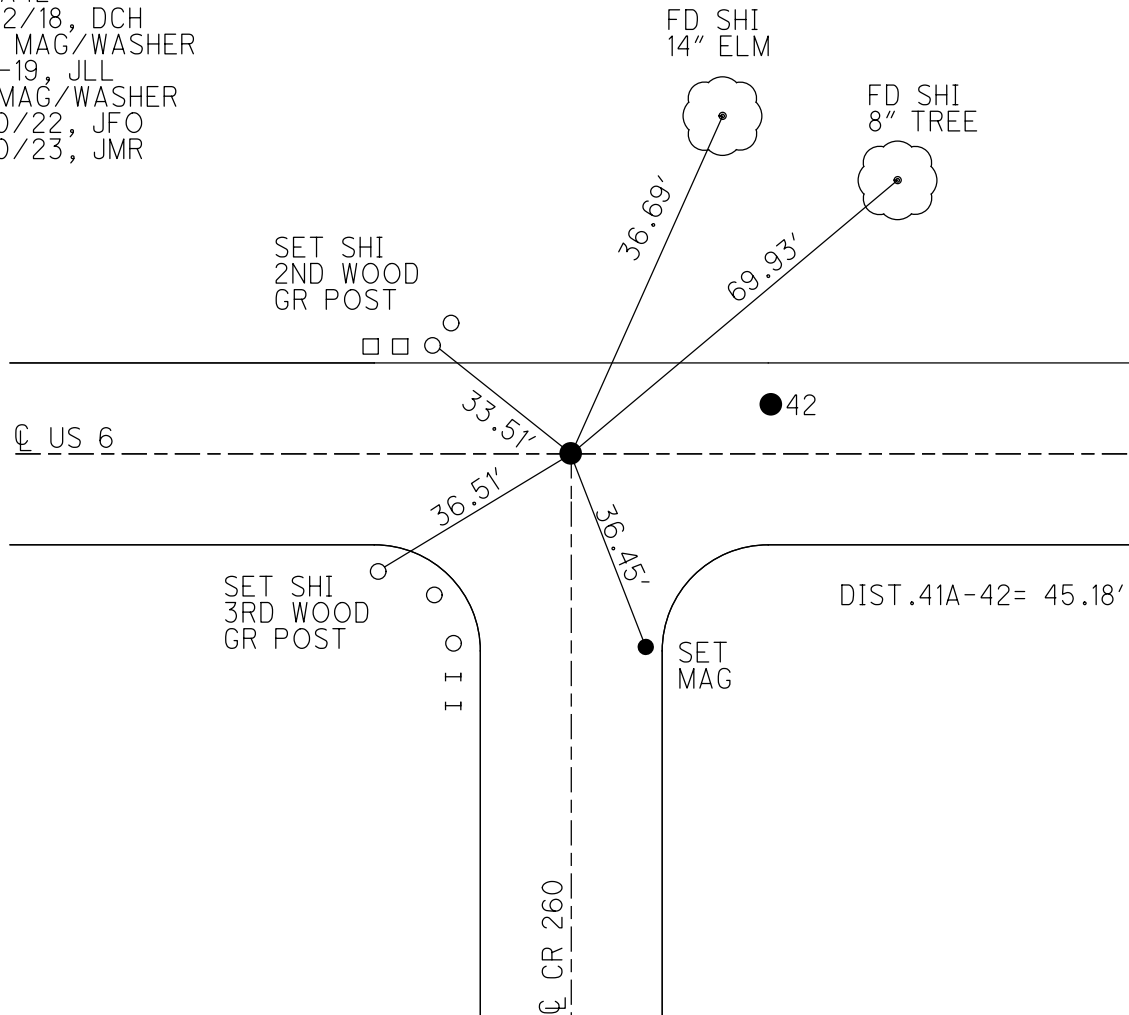
GEOID: NAVD88 2018

GRID: NORTHING: 635165.604

EASTING: 1844086.175



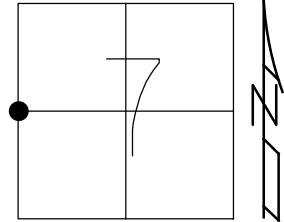
RECORD:
 FD P.K./WASHER
 REFA42
 11/22/18, DCH
 SET MAG/WASHER
 8-2-19, JLL
 FD MAG/WASHER
 2/10/22, JFO
 1/20/23, JMR



O.D.O.T. DISTRICT 2 SURVEY OFFICE (USE ONLY)

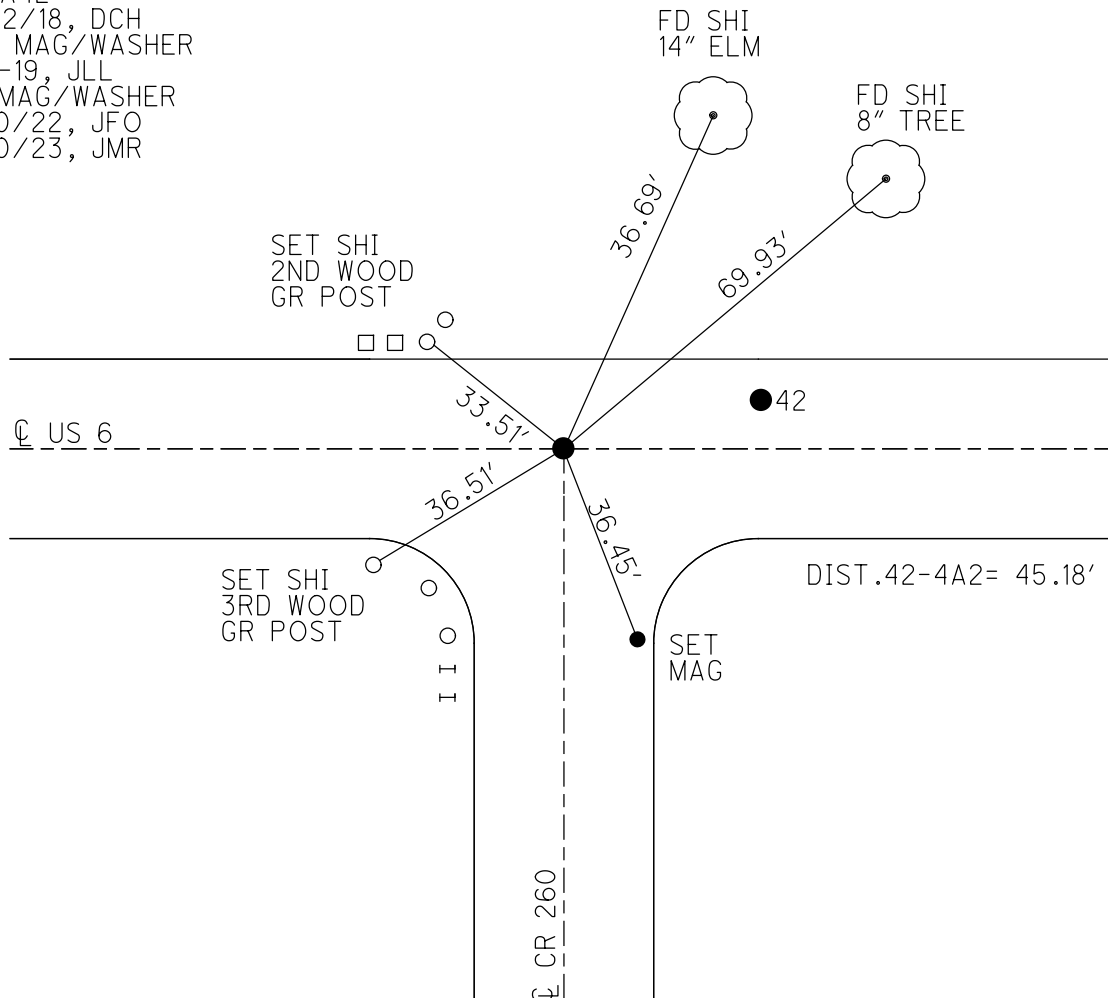
PERSONNEL	REFERENCE NO. <u>41 A</u>	SHEET <u>14</u> OF <u>34</u>
NOTES <u>LEU</u>	DATE <u>8/1/18</u>	ROUTE <u>US 6</u>
H.C. <u>LEU</u>	WEATHER <u>CLOUDY</u>	COUNTY <u>SANDUSKY</u>
R.C. <u>TRENKA</u>	TEMP. <u>76°</u>	TOWNSHIP <u>TOWNSEND</u>
DWG BY <u>AUBLE</u>	PID <u>PAVETRAN</u>	SECTION <u>7</u>
		T <u>5</u> N R <u>16</u> E

TYPE MONUMENT P.K./WASHER
 ON SURFACE - ~~BELOW~~ ON
 OFFSET \varnothing PAVEMENT 3.5' LT : ~~RT~~
8' TO LT EDGE PAVEMENT
 STATION: 1410+42



HORZ.DATUM: NAD83 (2011) GEOID: 2012A
 GRID: NORTHING: 635165.604 EASTING: 1844086.175

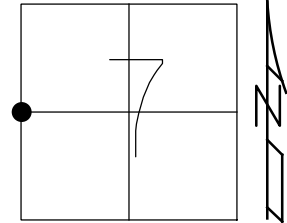
RECORD:
 FD P.K./WASHER
 REFA42
 11/22/18, DCH
 SET MAG/WASHER
 8-2-19, JLL
 FD MAG/WASHER
 2/10/22, JFO
 1/20/23, JMR



O.D.O.T. DISTRICT 2 SURVEY OFFICE (USE ONLY)

PERSONNEL _____ REFERENCE NO. 41 A SHEET 14 OF 34
 NOTES LEU DATE 8/1/18 ROUTE US 6
 H.C. LEU WEATHER CLOUDY COUNTY SANDUSKY
 R.C. TRENKA TEMP. 76° TOWNSHIP TOWNSEND
 DWG BY AUBLE PID 95769 SECTION 7
 T 5 N R 16 E

TYPE MONUMENT P.K./WASHER
 ON SURFACE - ~~BELOW~~ ON
 OFFSET 8' TO LT EDGE PAVEMENT
 STATION: 1410+42



HORIZ.DATUM: NAD83 (2011) GEOID: 2012A
 GRID: NORTHING: 635165.604 EASTING: 1844086.175

RECORD:
 FD P.K./WASHER
 REFA42
 11/22/18, DCH
 SET MAG/WASHER
 8-2-19, JLL

