

O.D.O.T. DISTRICT 2 SURVEY OFFICE (USE ONLY)

PERSONNEL

REFERENCE NO. 42

SHEET 15 OF 34

NOTES MILLER

DATE 12/28/23

ROUTE US 6

H.C. RHOADES

WEATHER RAIN

COUNTY SANDUSKY

R.C. MILLER

TEMP. 44°

TOWNSHIP TOWNSEND

SECTION 7

DWG BY RHOADES

PID PAVETRAIN

T 5 N R 16 E

TYPE MONUMENT MAG/WASHER

ON SURFACE - ~~BELOW~~ ON

OFFSET Q PAVEMENT 2.8' LT : ~~RT~~

- TO - EDGE PAVEMENT

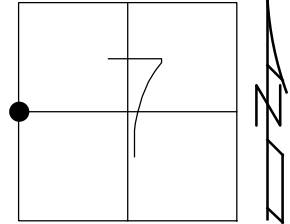
STATION: 1410+42

HORIZ.DATUM: NAD83 (2011)

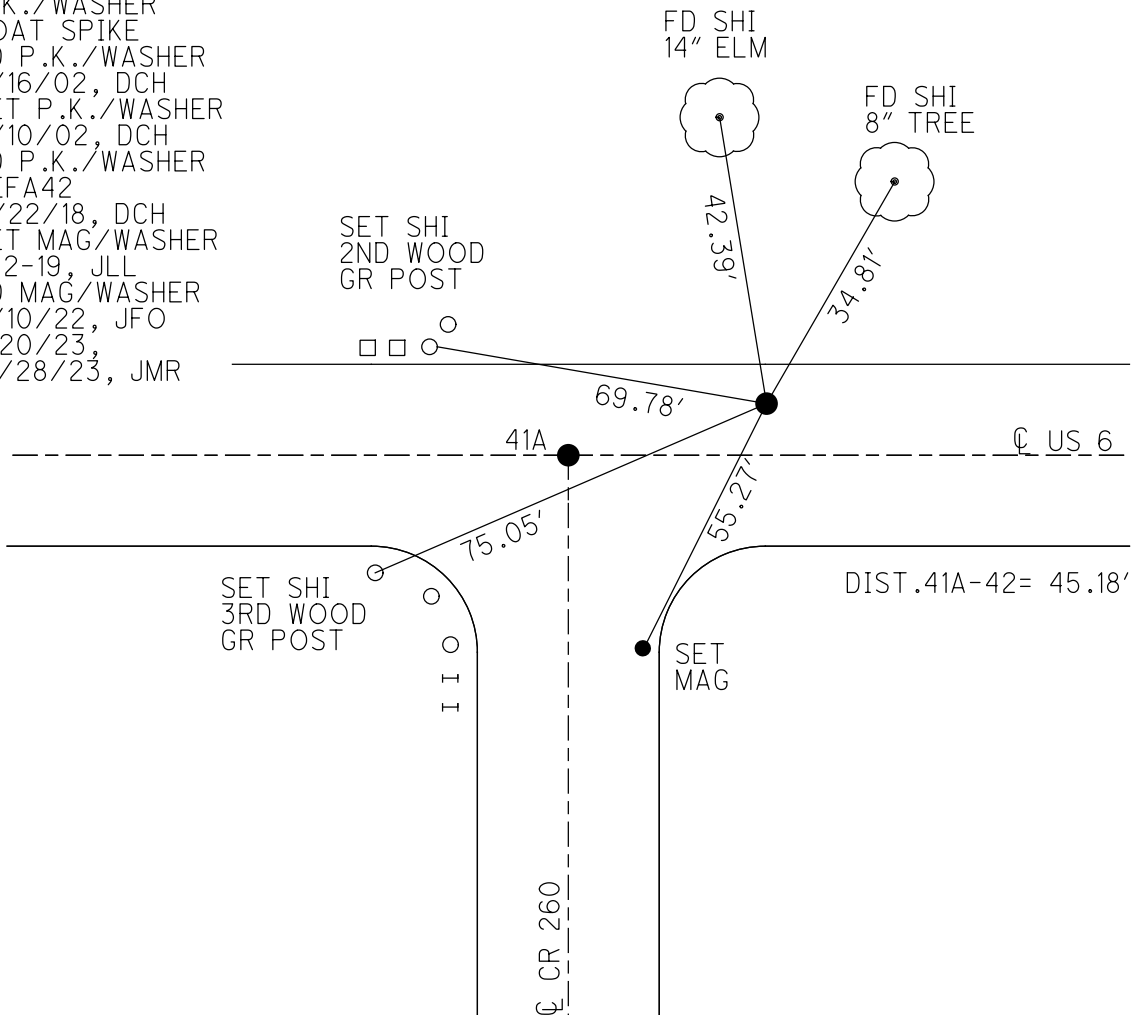
GEOID: NAVD88 2018

GRID: NORTHING: 635169.141

EASTING: 1844131.190



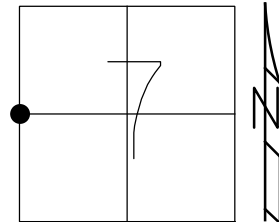
RECORD: P.I.  
 STA. 170+01  
 P.K./WASHER  
 BOAT SPIKE  
 FD P.K./WASHER  
 3/16/02, DCH  
 SET P.K./WASHER  
 6/10/02, DCH  
 FD P.K./WASHER  
 REFA42  
 11/22/18, DCH  
 SET MAG/WASHER  
 8-2-19, JLL  
 FD MAG/WASHER  
 2/10/22, JFO  
 1/20/23,  
 12/28/23, JMR



O.D.O.T. DISTRICT 2 SURVEY OFFICE (USE ONLY)

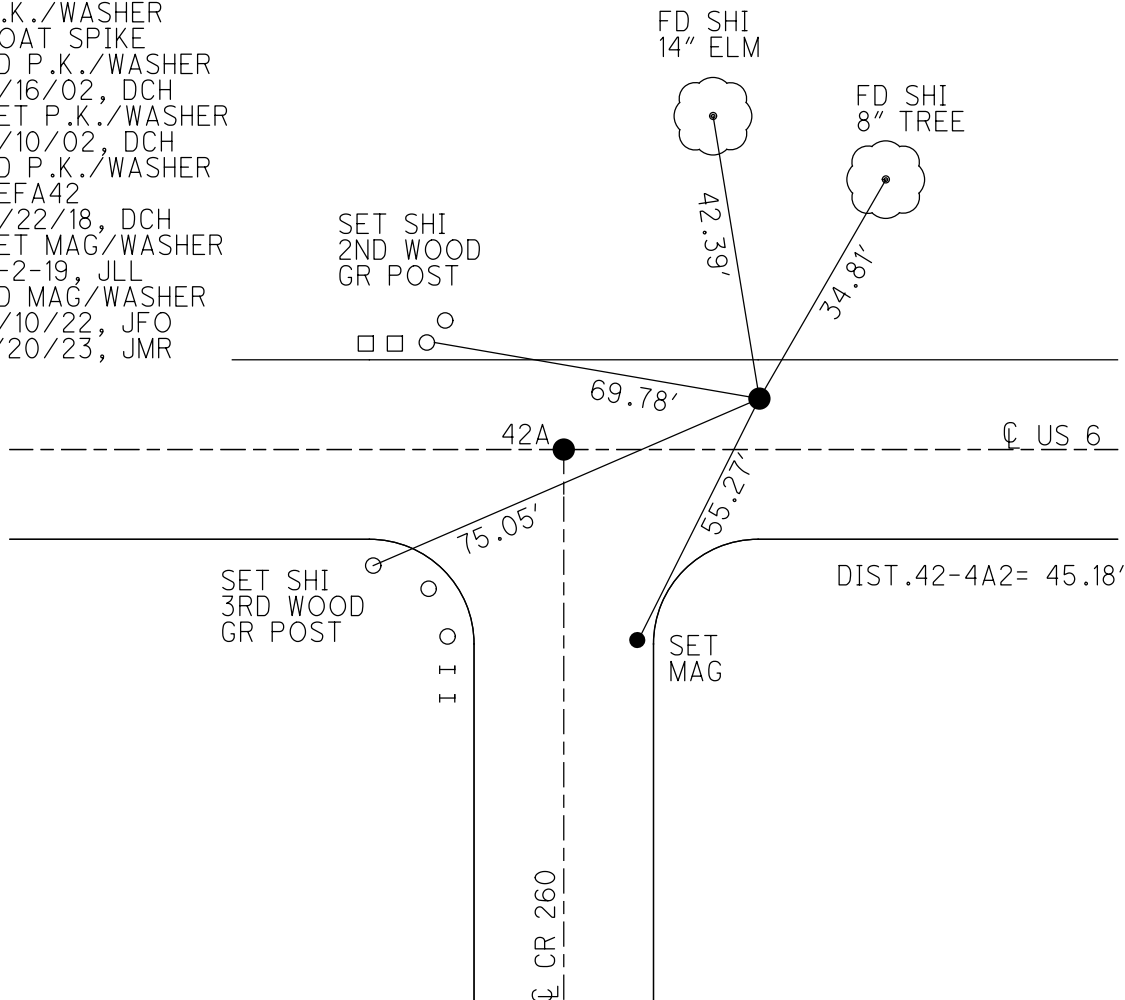
PERSONNEL \_\_\_\_\_ REFERENCE NO. 42 SHEET 15 OF 34  
 NOTES LEU DATE 8/1/18 ROUTE US 6  
 H.C. LEU WEATHER CLOUDY COUNTY SANDUSKY  
 R.C. TRENKA TEMP. 76° TOWNSHIP TOWNSEND  
 DWG BY AUBLE PID PAVETRAIN SECTION 7  
 T 5 N R 16 E

TYPE MONUMENT P.K./WASHER  
 ON SURFACE - ~~BELOW~~ ON  
 OFFSET  $\varnothing$  PAVEMENT 2.8' LT : ~~RT~~  
- TO - EDGE PAVEMENT  
 STATION: 1410+42



HORIZ.DATUM: NAD83 (2011) GEOID: 2012A  
 GRID: NORTHING: 635169.141 EASTING: 1844131.190

RECORD: P.I.  
 STA. 170+01  
 PREVIOUS MONUMENTS:  
 P.K./WASHER  
 BOAT SPIKE  
 FD P.K./WASHER  
 3/16/02, DCH  
 SET P.K./WASHER  
 6/10/02, DCH  
 FD P.K./WASHER  
 REFA42  
 11/22/18, DCH  
 SET MAG/WASHER  
 8-2-19, JLL  
 FD MAG/WASHER  
 2/10/22, JFO  
 1/20/23, JMR



O.D.O.T. DISTRICT 2 SURVEY OFFICE (USE ONLY)

PERSONNEL \_\_\_\_\_

REFERENCE NO. 42

SHEET 15 OF 34

NOTES LEU

DATE 8/1/18

ROUTE US 6

H.C. LEU

WEATHER CLOUDY

COUNTY SANDUSKY

R.C. TRENKA

TEMP. 76°

TOWNSHIP TOWNSEND

SECTION 7

DWG BY AUBLE PID 95769

T 5 N R 16 E

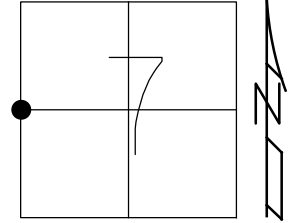
TYPE MONUMENT P.K./WASHER

ON SURFACE - ~~BELOW~~ ON

OFFSET  $\odot$  PAVEMENT ON LT : RT

- TO - EDGE PAVEMENT

STATION: 1410+42



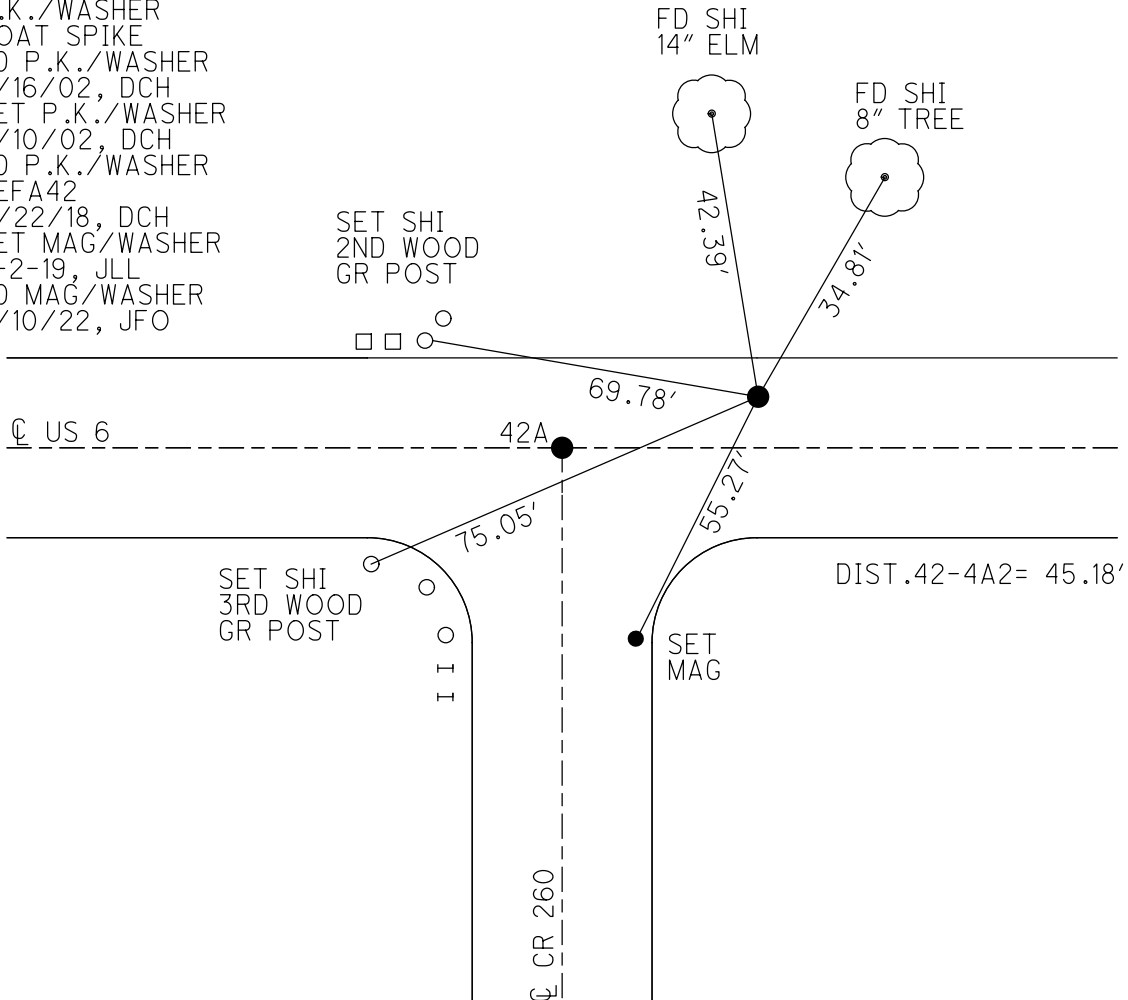
HORZ.DATUM: NAD83 (2011)

GEOID: 2012A

GRID: NORTHING: 635169.141

EASTING: 1844131.190

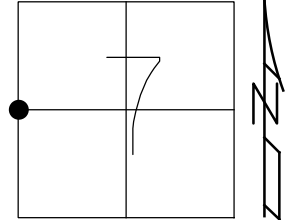
RECORD: P.I.  
 STA. 170+01  
 PREVIOUS MONUMENTS:  
 P.K./WASHER  
 BOAT SPIKE  
 FD P.K./WASHER  
 3/16/02, DCH  
 SET P.K./WASHER  
 6/10/02, DCH  
 FD P.K./WASHER  
 REFA42  
 11/22/18, DCH  
 SET MAG/WASHER  
 8-2-19, JLL  
 FD MAG/WASHER  
 2/10/22, JFO



**O.D.O.T. DISTRICT 2 SURVEY OFFICE (USE ONLY)**

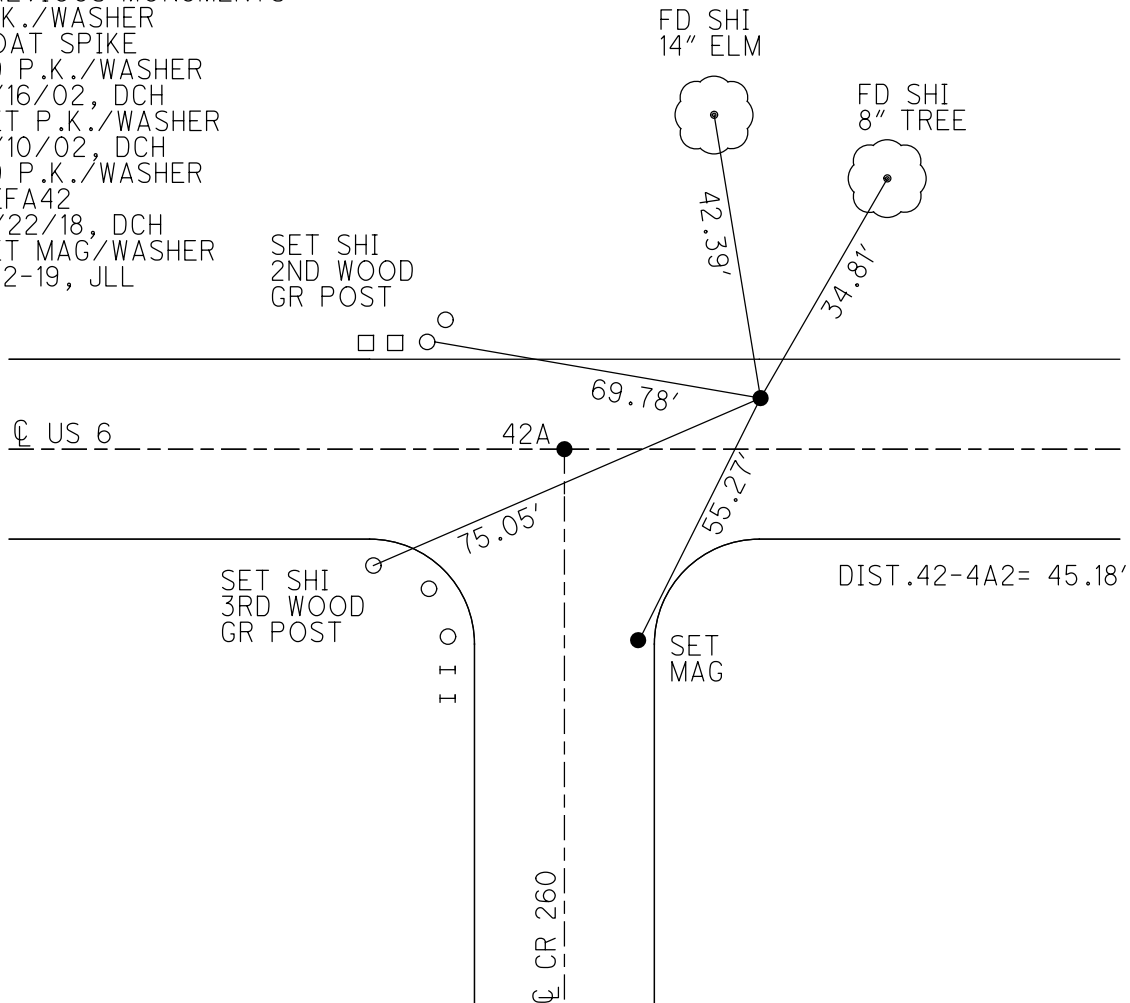
PERSONNEL	REFERENCE NO. <u>42</u>	SHEET <u>15</u> OF <u>34</u>
NOTES <u>LEU</u>	DATE <u>8/1/18</u>	ROUTE <u>US 6</u>
H.C. <u>LEU</u>	WEATHER <u>CLOUDY</u>	COUNTY <u>SANDUSKY</u>
R.C. <u>TRENKA</u>	TEMP. <u>76°</u>	TOWNSHIP <u>TOWNSEND</u>
DWG BY <u>AUBLE</u>	PID <u>95769</u>	SECTION <u>7</u>
		T <u>5</u> N R <u>16</u> E

TYPE MONUMENT P.K./WASHER  
 ON SURFACE - ~~BELOW~~ ON  
 OFFSET  $\odot$  PAVEMENT ON LT : RT  
- TO - EDGE PAVEMENT  
 STATION: 1410+42



HORZ.DATUM: NAD83 (2011) GEOID: 2012A  
 GRID: NORTHING: 635169.141 EASTING: 1844131.190

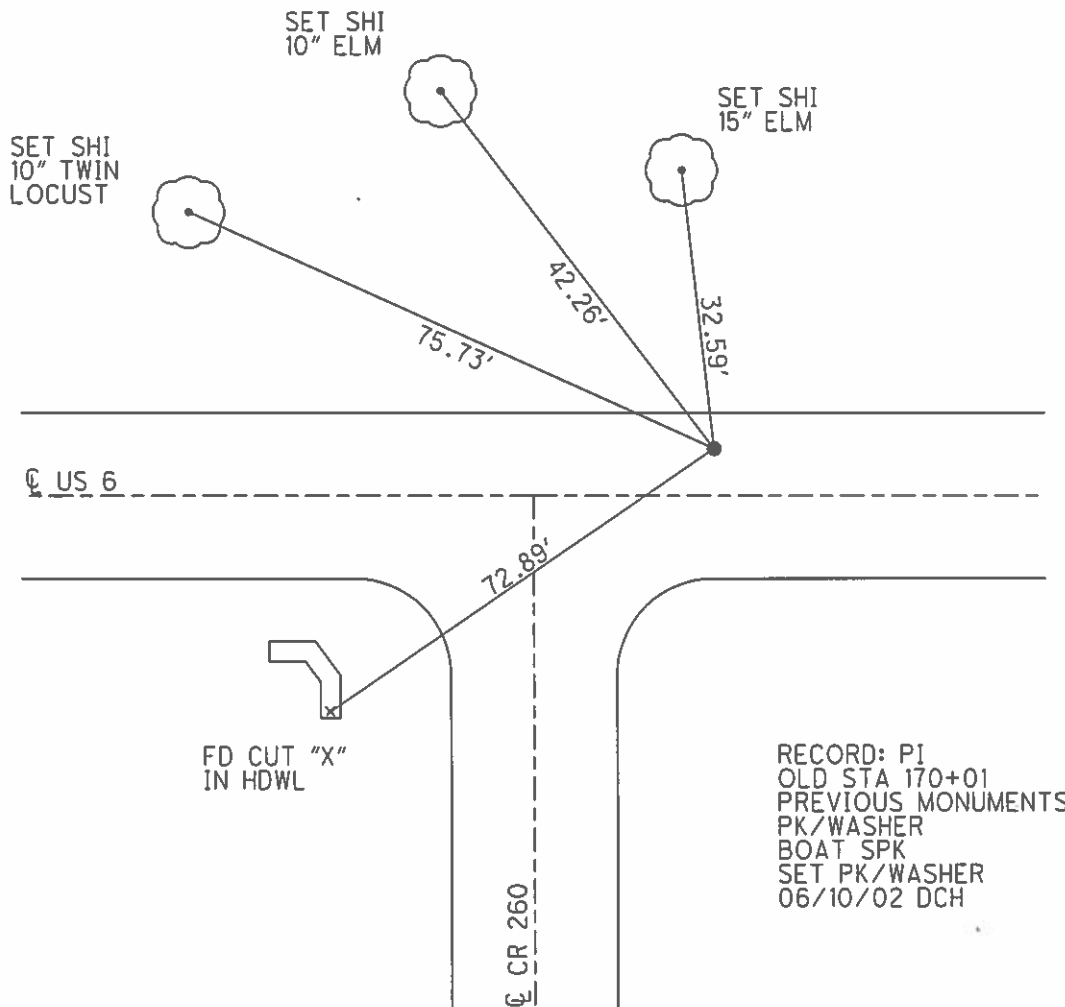
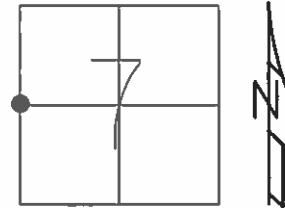
RECORD: P.I.  
 STA. 170+01  
 PREVIOUS MONUMENTS:  
 P.K./WASHER  
 BOAT SPIKE  
 FD P.K./WASHER  
 3/16/02, DCH  
 SET P.K./WASHER  
 6/10/02, DCH  
 FD P.K./WASHER  
 REFA42  
 11/22/18, DCH  
 SET MAG/WASHER  
 8-2-19, JLL



**O.D.O.T. DISTRICT 2 SURVEY OFFICE (USE ONLY)**

PERSONNEL	REFERENCE NO.	<u>42</u>	SHEET	<u>13</u>	OF	<u>31</u>
NOTES	<u>ROUSOS</u>	DATE	<u>03/16/02</u>	ROUTE	<u>US 6</u>	
H.C.	<u>VAN DUSEN</u>	WEATHER	<u>WINDY</u>	COUNTY	<u>SANDUSKY</u>	
R.C.	<u>MOSSER</u>	TEMP.	<u>28°</u>	TOWNSHIP	<u>TOWNSEND</u>	
	<u>HOMAN</u>			SECTION	<u>7</u>	
				T	<u>5</u>	R
				N	<u>17</u>	E

TYPE MONUMENT PK/WASHER  
 ON SURFACE - ~~BELOW~~ ON  
 LEFT - ☉ PAV'T - ~~RIGHT~~ 4.0'  
8.0' TO LT EDGE PAVEMENT  
 S.L.M. 1410+42  
 GRID: NORTHING: - EASTING: -



RECORD: PI  
 OLD STA 170+01  
 PREVIOUS MONUMENTS  
 PK/WASHER  
 BOAT SPK  
 SET PK/WASHER  
 06/10/02 DCH

O.D.O.T. DISTRICT 2 SURVEY OFFICE

PERSONNEL

REFERENCE NO. 42

SHEET 11 OF 27

NOTES ROUSOS

DATE 3/16/02

ROUTE 6

H.C. VAN DUSEN

WEATHER WINDY

COUNTY SANDUSKY

R.C. MOSSER

TEMP. 28°

TOWNSHIP TOWNSEND

HOMAN

SECTION 7

T 5 N R 17 E

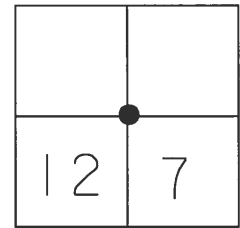
TYPE MONUMENT PK/WASHER

ON SURFACE - ~~BELOW~~ ON

LEFT - Q PAV'T - ~~RIGHT~~ 4.0'

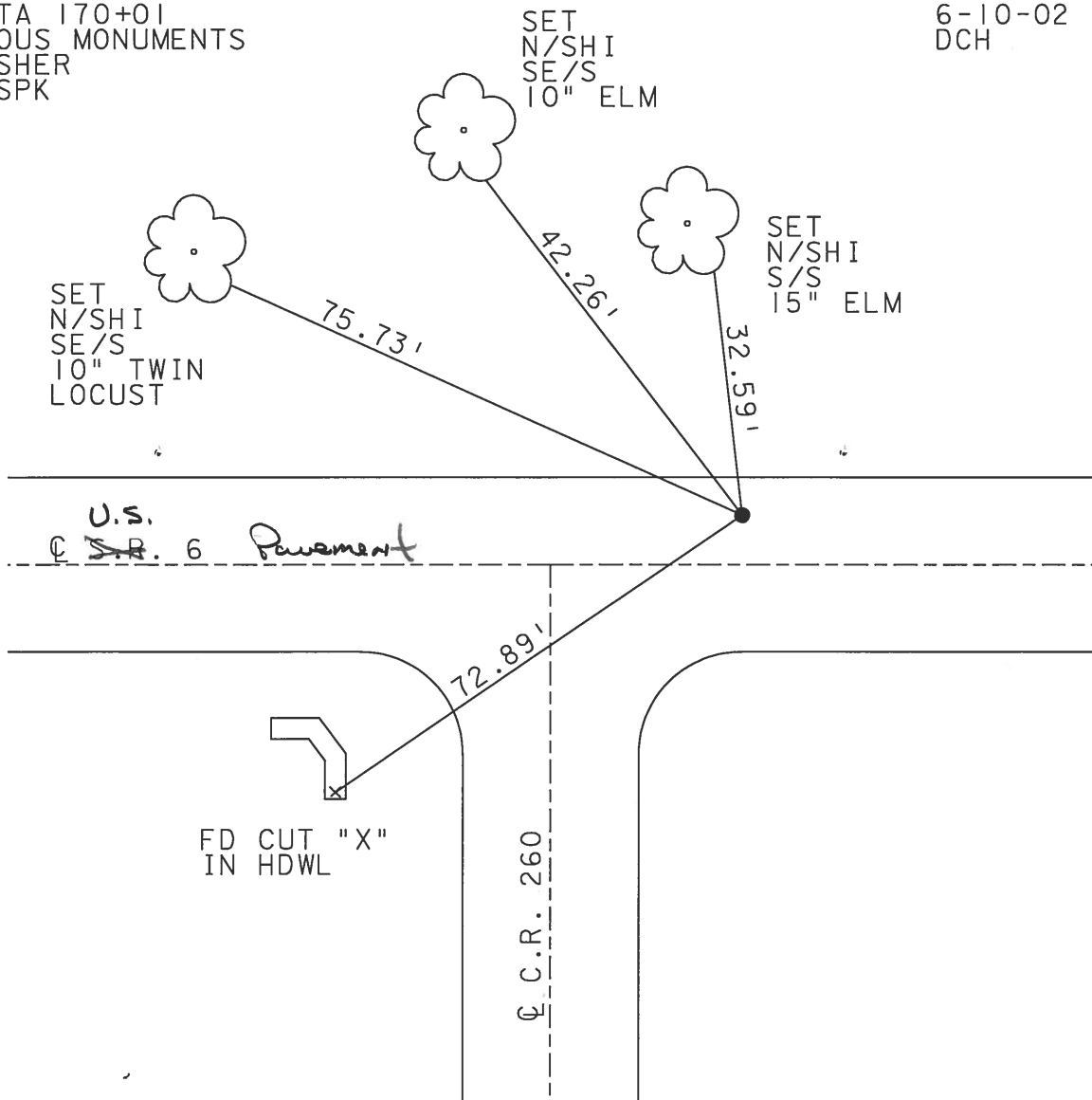
8' TO LT EDGE PAVEMENT

S.L.M. 1410+42



P.I.  
OLD STA 170+01  
PREVIOUS MONUMENTS  
PK/WASHER  
BOAT SPK

SET PK/WASHER  
6-10-02  
DCH



SET  
N/SHI  
SE/S  
10" TWIN  
LOCUST

SET  
N/SHI  
SE/S  
10" ELM

SET  
N/SHI  
S/S  
15" ELM

U.S.  
SR. 6 Pavement

FD CUT "X"  
IN HDWL

C.C.R. 260

O.D.O.T. DISTRICT 2 SURVEY OFFICE

PERSONNEL

REFERENCE NO. 42

SHEET 23 OF 39

NOTES CHENEY

H.C. RIPPLE

R.C. BARBOUR

DATE 9-16-1991

WEATHER SUNNY

TEMP. 85°

ROUTE 6

COUNTY SANDUSKY

TOWNSHIP TOWNSEND

SECTION 7

T5N R17E

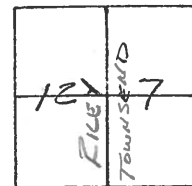
TYPE MONUMENT PK/WASHER

ON SURFACE - BELOW

LEFT - C PAV'T. - RIGHT 4'±

TO EDGE PAVEMENT

S.L.M. 1410+42



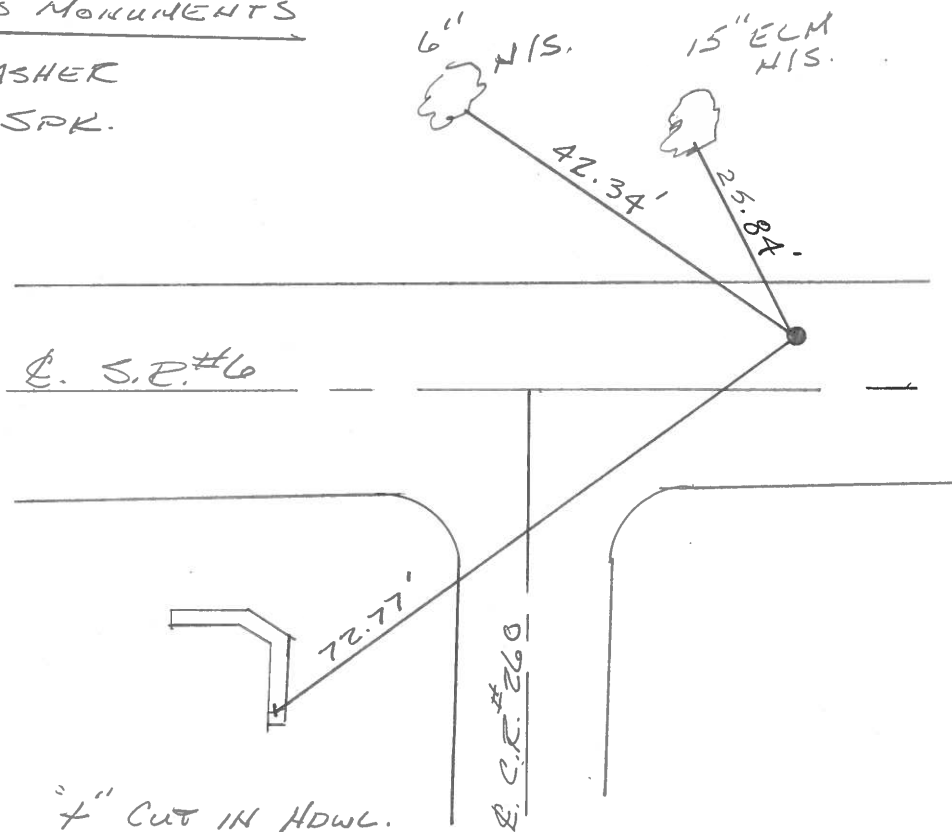
P.I.

OLD. STATION: 170+01

PREVIOUS MONUMENTS

P.K./WASHER

BOAT SPR.



4\"/>

Q.D.O.T. DISTRICT 2 SURVEY OFFICE

SHEET \_\_\_\_\_ OF \_\_\_\_\_

County Sandusky S.R. U.S. #6

Date 9/24/84

Township Townsend

Weather overcast

Section 7

Temp. 65°

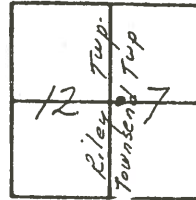
T5N, R12E

Personnel Cronin

Ripple

Geyman

Barbour



42

CHENEY  
RIPPLE  
BARBOUR



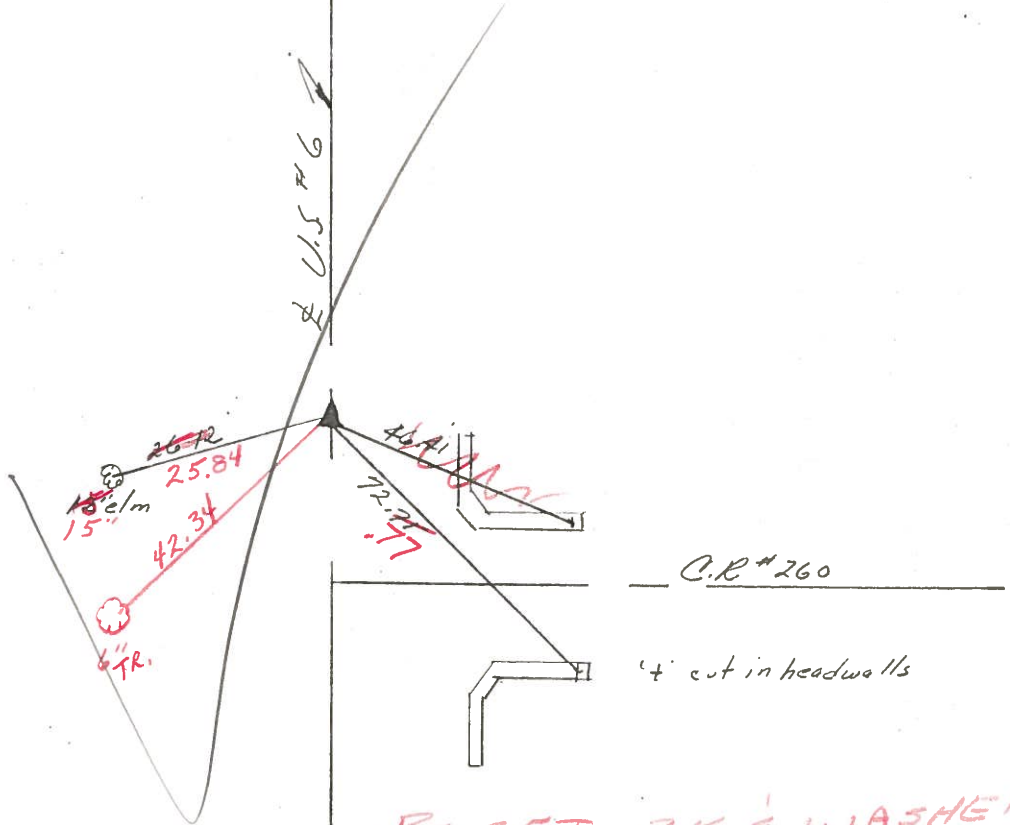
4/03/91  
40°

1410+42

P.I.

170+01

Set P.K. & washer atop  
boat spike 3.5± ft. & Point.



RE-SET P.K. & WASHER  
9-16-1991 85°  
4'± N. OF ♀.



Q.D.O.T. DISTRICT 2 SURVEY OFFICE

SHEET \_\_\_\_\_ OF \_\_\_\_\_

County Sandusky S. R. U.S. #6

Date 9/24/84

Township Townsend

Weather overcast

Section 7

Temp. 65°

T5N, R12E

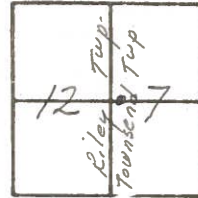
Personnel Cronin

Ripple

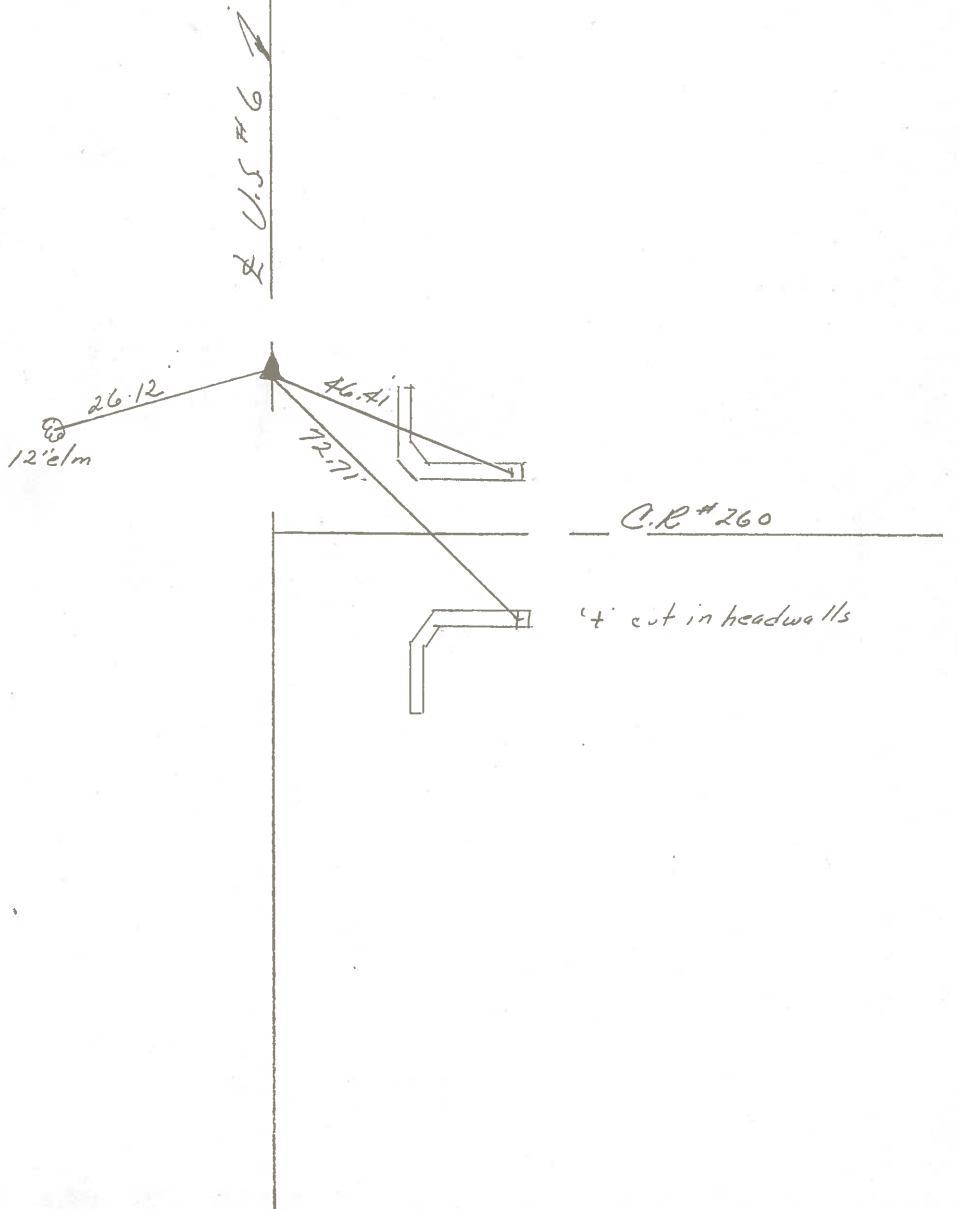
Geyman

Barbour

#  
42



P.I.  
170+01  
Set P.K. washer at top  
boat spike 3.5± ft. E Point.





SHEET NO. 12

Tied 7/31/75

DATE drawn 7/30/75

PERSONNEL	TITLE	PERSONNEL	TITLE
Cronin		Schneider	
Ash		Mosser	
Geyman		Barbour	

COUNTY Sandusky

S. R. #6

WEATHER sunny

SEC. "I" - Fremont-East

TEMP. 78°

DESCRIPTION Ties for Control Points

JOB NO.

LEFT

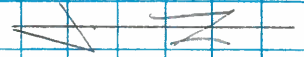
CENTER LINE

RIGHT

Townsend Twp

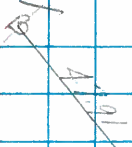
Sec. 7

42



P.I.  
172+61

Koatside nest  
sign post  
chisel mark  
19' up



2.15



"K" cut in road shoulder

Riley Twp

Sec. 12

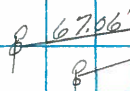
41

P.I.  
142+75.87  
Set R.R. spike  
punch mark



43.74'

E.C.R. #256



67.06'

62.31'