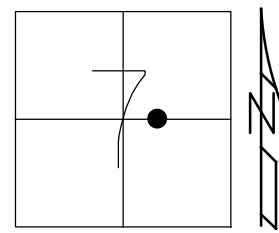


O.D.O.T. DISTRICT 2 SURVEY OFFICE (USE ONLY)

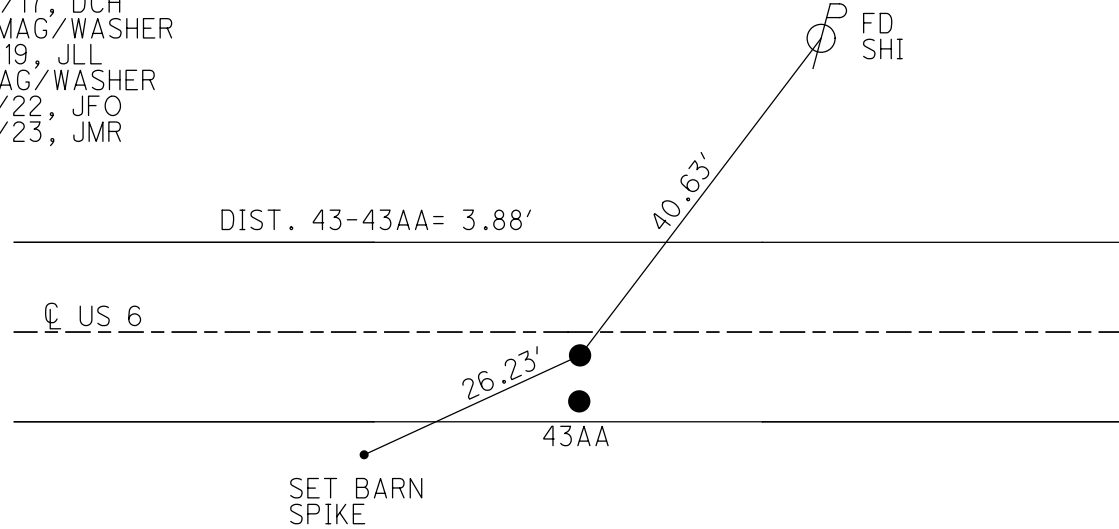
PERSONNEL \_\_\_\_\_ REFERENCE NO. 43 SHEET 16 OF 34  
 NOTES LEU DATE 8/6/18 ROUTE US 6  
 H.C. LEU WEATHER CLOUDY COUNTY SANDUSKY  
 R.C. HAGEMAYER TEMP. 78° TOWNSHIP TOWNSEND  
 DWG BY AUBLE PID PAVETRAIN SECTION 7  
 T 5 N R 17 E

TYPE MONUMENT P.K.SHANK  
 ON SURFACE - ~~BELOW~~ ON  
 OFFSET 11' TO RT PAVEMENT 0.3' ~~LT~~ : RT  
11' TO RT EDGE PAVEMENT  
 STATION: 1436+56



HORZ.DATUM: NAD83 (2011) GEOID: 2012A  
 GRID: NORTHING: 635017.654 EASTING: 1846742.729

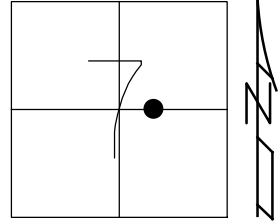
RECORD: P.I.  
 $\Delta = 00^\circ 20'$  LT (PLAN)  
 STA 196+14.60  
 FD BOAT SPIKE  
 2" DOWN  
 FD P.K./WASHER  
 1.25" DOWN  
 FD P.K.WASHER  
 3/16/02, DCH  
 SET P.K./WASHER  
 6/11/02, DCH  
 FD P.K.SHANK  
 REF43  
 11/23/17, DCH  
 SET MAG/WASHER  
 7-31-19, JLL  
 FD MAG/WASHER  
 2/10/22, JFO  
 1/20/23, JMR



O.D.O.T. DISTRICT 2 SURVEY OFFICE (USE ONLY)

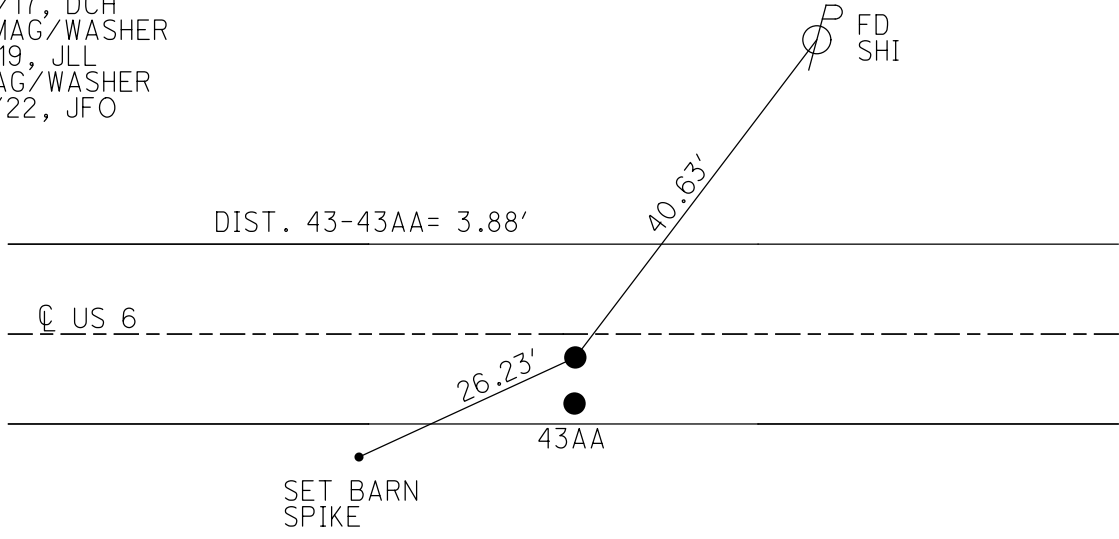
PERSONNEL \_\_\_\_\_ REFERENCE NO. 43 SHEET 16 OF 34  
 NOTES LEU DATE 8/6/18 ROUTE US 6  
 H.C. LEU WEATHER CLOUDY COUNTY SANDUSKY  
 R.C. HAGEMeyer TEMP. 78° TOWNSHIP TOWNSEND  
 DWG BY AUBLE PID 95769 SECTION 7  
 T 5 N R 17 E

TYPE MONUMENT P.K.SHANK  
 ON SURFACE - ~~BELOW~~ ON  
 OFFSET 0.3' RT : RT  
11' TO RT EDGE PAVEMENT  
 STATION: 1436+56



HORZ.DATUM: NAD83 (2011) GEOID: 2012A  
 GRID: NORTHING: 635017.654 EASTING: 1846742.729

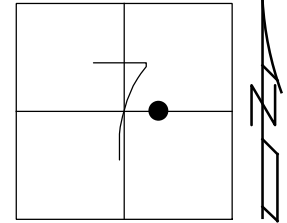
- RECORD: P.I.
- Δ = 00° 20' LT (PLAN)
- STA 196+14.60
- FD BOAT SPIKE
- 2" DOWN
- FD P.K./WASHER
- 1.25" DOWN
- FD P.K.WASHER
- 3/16/02, DCH
- SET P.K./WASHER
- 6/11/02, DCH
- FD P.K.SHANK
- REF43
- 11/23/17, DCH
- SET MAG/WASHER
- 7-31-19, JLL
- FD MAG/WASHER
- 2/10/22, JFO



O.D.O.T. DISTRICT 2 SURVEY OFFICE (USE ONLY)

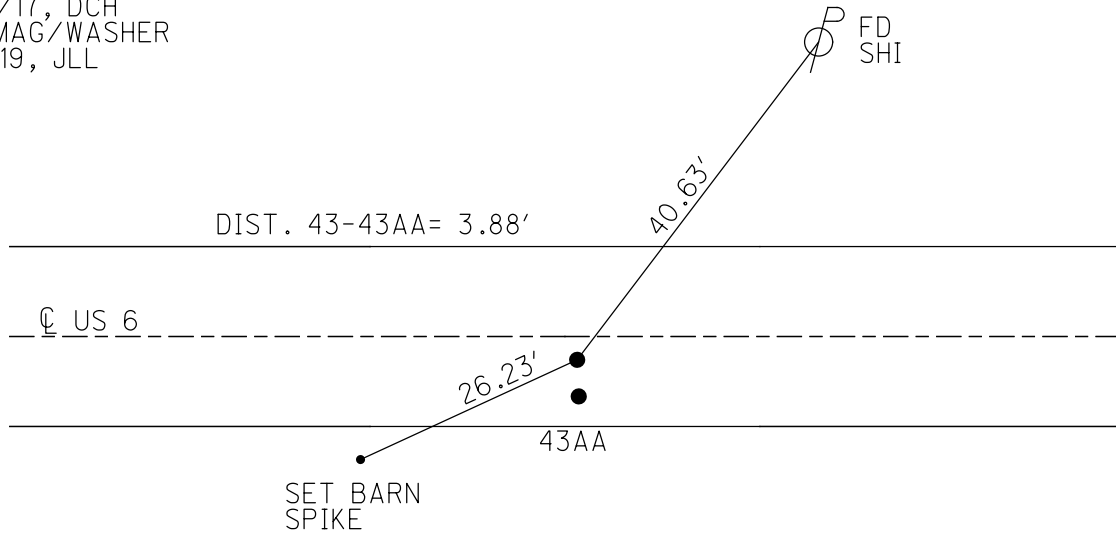
PERSONNEL \_\_\_\_\_ REFERENCE NO. 43 SHEET 16 OF 34  
 NOTES LEU DATE 8/6/18 ROUTE US 6  
 H.C. LEU WEATHER CLOUDY COUNTY SANDUSKY  
 R.C. HAGEMeyer TEMP. 78° TOWNSHIP TOWNSEND  
 DWG BY AUBLE PID 95769 SECTION 7  
 T 5 N R 17 E

TYPE MONUMENT P.K.SHANK  
 ON SURFACE - ~~BELOW~~ ON  
 OFFSET  $\odot$  PAVEMENT 0.3' ~~RT~~ : RT  
11' TO RT EDGE PAVEMENT  
 STATION: 1436+56



HORZ.DATUM: NAD83 (2011) GEOID: 2012A  
 GRID: NORTHING: 635017.654 EASTING: 1846742.729

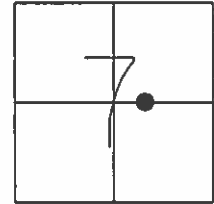
RECORD: P.I.  
 $\Delta = 00^\circ 20'$  LT (PLAN)  
 STA 196+14.60  
 FD BOAT SPIKE  
 2" DOWN  
 FD P.K./WASHER  
 1.25" DOWN  
 FD P.K.WASHER  
 3/16/02, DCH  
 SET P.K./WASHER  
 6/11/02, DCH  
 FD P.K.SHANK  
 REF43  
 11/23/17, DCH  
 SET MAG/WASHER  
 7-31-19, JLL



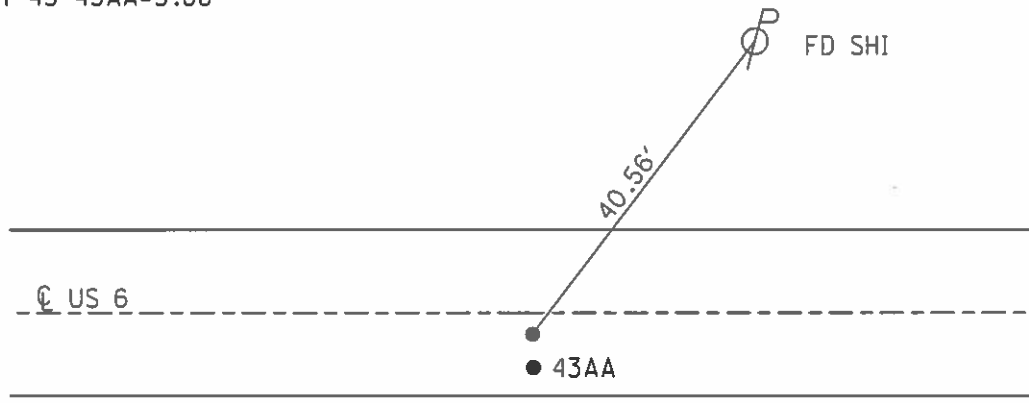
O.D.O.T. DISTRICT 2 SURVEY OFFICE (USE ONLY)

PERSONNEL	REFERENCE NO.	<u>43</u>	SHEET	<u>14</u>	OF	<u>31</u>
NOTES	<u>ROUSOS</u>	DATE	<u>03/16/02</u>	ROUTE	<u>US 6</u>	
H.C.	<u>VAN DUSEN</u>	WEATHER	<u>WINDY</u>	COUNTY	<u>SANDUSKY</u>	
R.C.	<u>MOSSER</u>	TEMP.	<u>28°</u>	TOWNSHIP	<u>TOWNSEND</u>	
	<u>HOMAN</u>			SECTION	<u>7</u>	
				<u>T 5 N R 17 E</u>		

TYPE MONUMENT PK/WASHER  
 ON SURFACE - ~~BELOW~~ ON  
~~LEFT~~ - Q PAV'T - RIGHT 1'  
11.0' TO RT EDGE PAVEMENT  
 S.L.M. 1436+56  
 GRID: NORTHING: - EASTING: -



RECORD: PI  
 DELTA= 00° 20'LT (PLAN)  
 STA 196+14.60  
 BOAT SPIKE 2" BELOW  
 (FD PK/WASHER 1.25" BELOW SURFACE)  
 SET PK/WASHER  
 06/11/02 DCH  
 DIST 43-43AA=3.88'



O.D.O.T. DISTRICT 2 SURVEY OFFICE

PERSONNEL

REFERENCE NO. 43

SHEET 12 OF 27

NOTES ROUSOS

DATE 3/16/02

ROUTE SR 6

H.C. VAN DUSEN

WEATHER WINDY

COUNTY SANDUSKY

R.C. MOSSER

TEMP. 28°

TOWNSHIP TOWNSEND

HOMAN

SECTION 7

T 5 N R 17 E

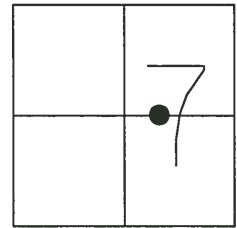
TYPE MONUMENT PK/WASHER

ON SURFACE - BELOW ON

LEFT - ☉ PAV'T - ~~RIGHT~~ "A" = 1' RT "B" 5' RT

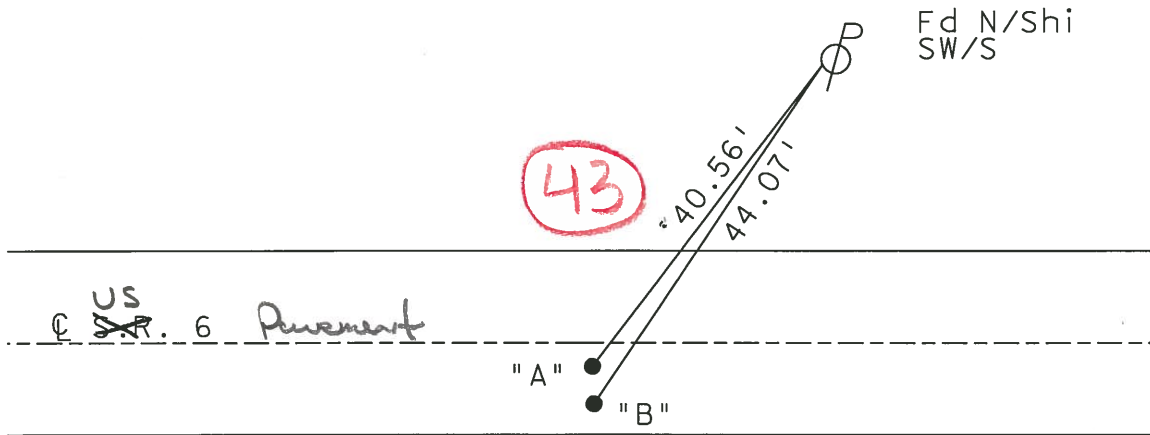
TO EDGE PAVEMENT "A" 11' TO RT EDGE  
"B" 7.7' TO RT EDGE

S.L.M. 1436+56



"A"  
P.I. DELTA= 00° 20' LT (PLAN)  
STA 196+14.60  
BOAT SPIKE 2" BELOW  
(FD PK/WASHER 1.25" BELOW SURFACE  
"B"  
PK/WASHER 3" BELOW  
PLAN: CORNER STONE 5.4' RT OF ☉  
BOOK#1: CORNER STONE 5.2' RT OF ☉  
RESET PK/WASHER

SET PK/WASHER  
6-11-02  
DCH



DIST "A" - "B" = 3.88'

# O.D.O.T. DISTRICT 2 SURVEY OFFICE

PERSONNEL \_\_\_\_\_

REFERENCE NO. \_\_\_\_\_

SHEET 24 OF 39

NOTES CHENEY

H.C. RIPPLE

R.C. BARBOUR

DATE 9-16-1991

WEATHER SUNNY

TEMP. 85°

ROUTE 6

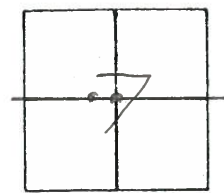
COUNTY SANDUSKY

TOWNSHIP TOWNSEND

SECTION 7

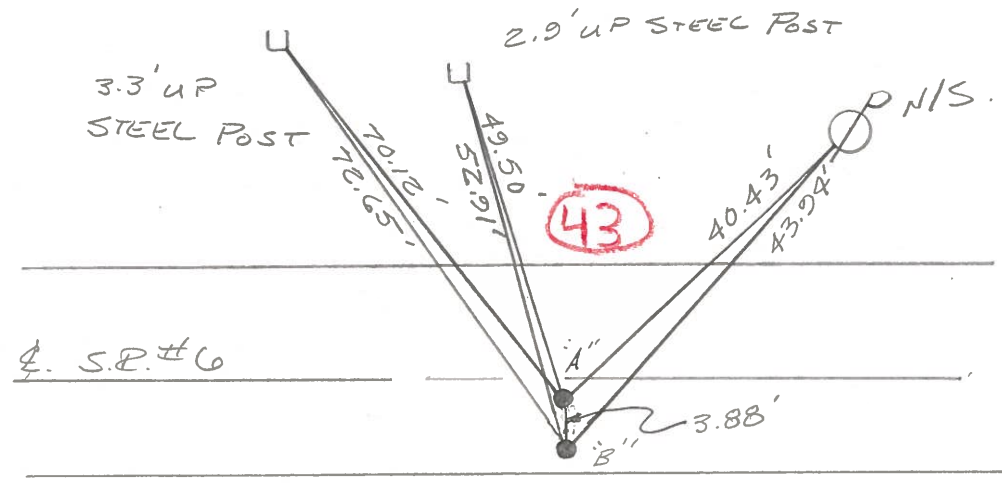
T 5 N R 17 E

TYPE MONUMENT PK<sub>5</sub>/WASHERS  
 ON SURFACE - BELOW "A" - 1.25' BELOW "B" - ON  
~~LEFT~~ - & PAV'T. - RIGHT "A" = 1' ± "B" = 5' ±  
 TO - EDGE PAVEMENT  
 S.L.M. 1436 + 56



"A"  
 P.I. Δ = 00° 20' LT. (PLAN)  
 STA. 196 + 14.60  
 BOAT SPR. 2" ± BELOW (FD. PK/WASHER 1.25" BELOW SURFACE)

"B"  
 PK/WASHER 3" ± BELOW  
 PLAN: CORNER STONE 5.4' RT. OF &  
 BOOK #1; CORNER STONE 5.2' RT. OF &  
 RE-SET P.K/WASHER



OD.O.T. DISTRICT 2 SURVEY OFFICE

SHEET \_\_\_\_\_ OF \_\_\_\_\_

County Sandusky S.R. U.S. #6

Date 9/24/84

Township Townsend

Weather sunny

Section 7

Temp. 70°

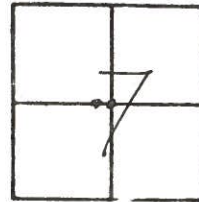
T5N, R12E

Personnel Cronin

Ripple

Geyman

Barbour



43

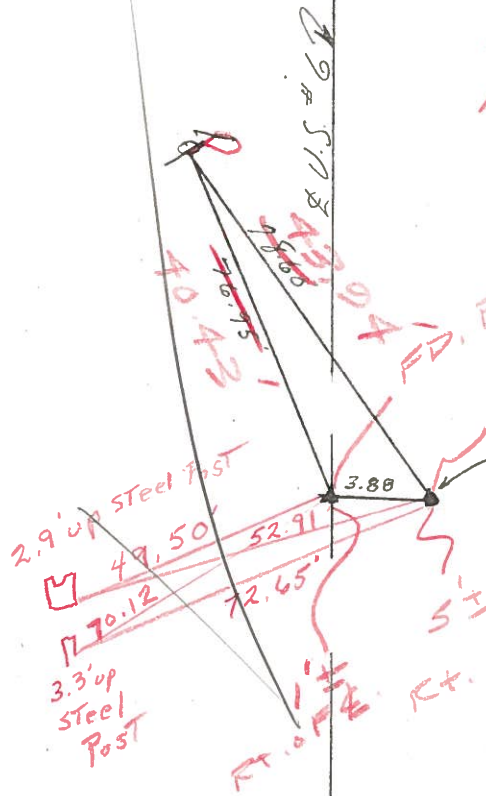
4/03/91  
40°

1436+56

P.I. A = 00°20'24" (Plan)

196+14.60

Boat spike 2'± below surface



Cheney  
Ripple  
Barbour

PK & WASHER 1/4" BELOW SURFACE

RE-SET PK & WASHER

PK & washer 2'± below surface  
Plan states corner stone 5.4'  
Pl. of R, Bl. #1 states corner stone 5.2' Pl. of E.

9-16-91  
85°

Q.D.O.T. DISTRICT 2 SURVEY OFFICE

SHEET \_\_\_\_\_ OF \_\_\_\_\_

County Sandusky S. R. U.S. #6

Date 9/24/84

Township Townsend

Weather sunny

Section 7

Temp. 70°

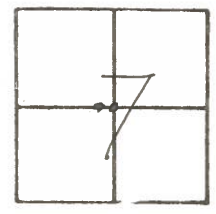
T5N, R12E

Personnel Cronin

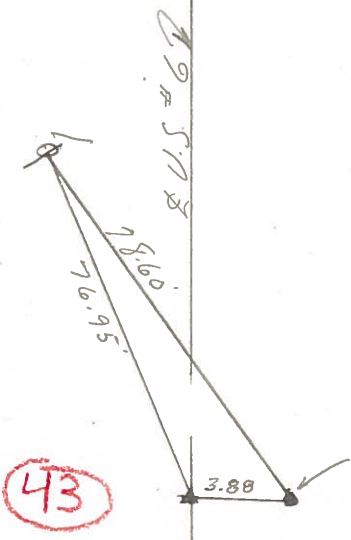
Ripple

Geyman

Barbour



P.I. Δ = 00°20'44" (Plan)  
196 + 14.60  
Boat spike 2'± below  
surface



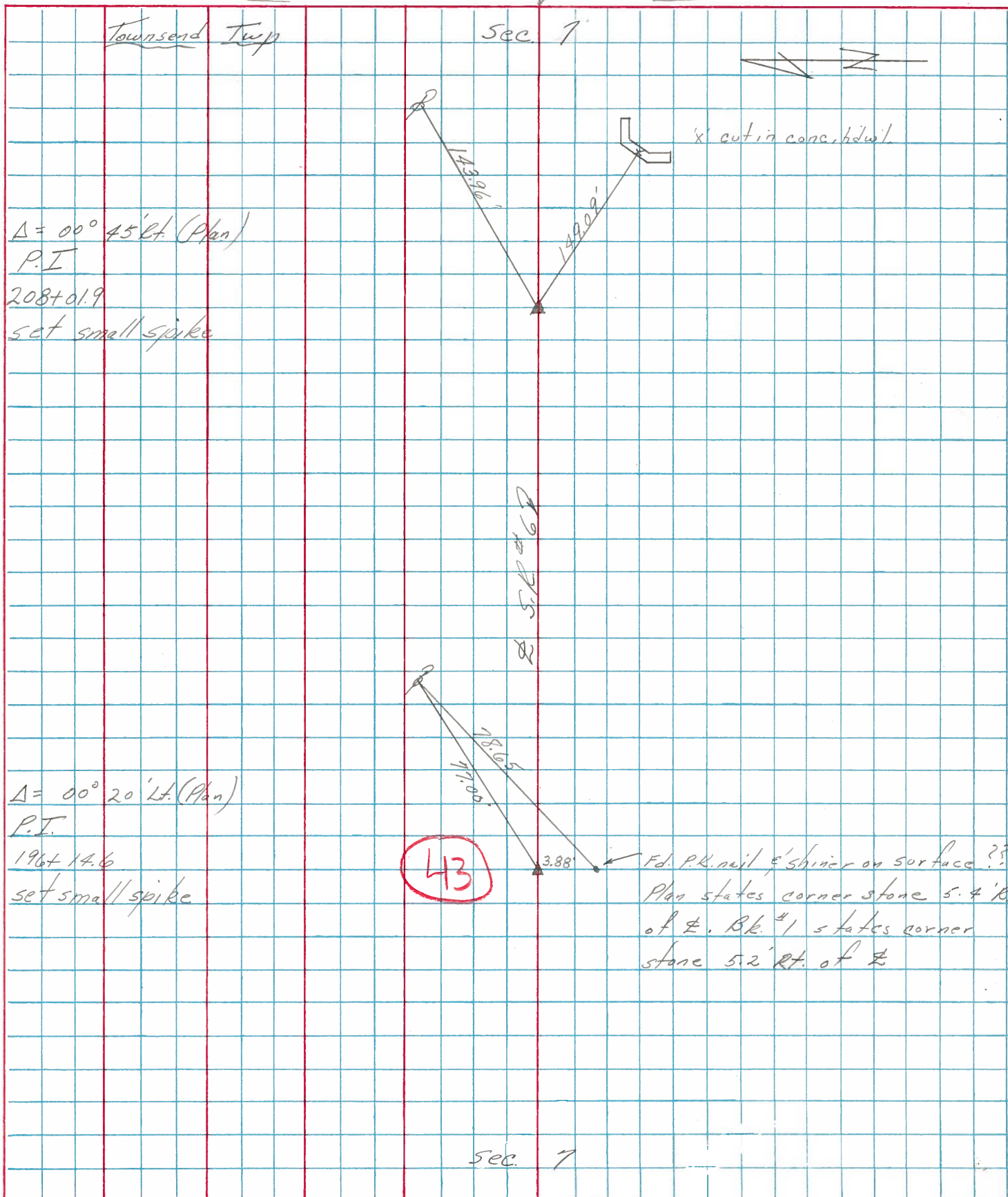
P.K. E' washer 2'± below surface  
Plan states corner stone 5.4  
ft. of E, Bk. #1 states corner  
stone 5.2 ft. of E.



PERSONNEL TITLE PERSONNEL TITLE  
 Cronin \_\_\_\_\_ Schneider \_\_\_\_\_  
 Ash \_\_\_\_\_ Mosser \_\_\_\_\_  
 Geyman \_\_\_\_\_ Barbour \_\_\_\_\_

COUNTY Sandusky DATE Tied 7/31/75  
 S. R. # 6 WEATHER Sunny  
 SEC. K - Fremont - East TEMP. 83°

DESCRIPTION Ties for Control Points LEFT CENTER LINE RIGHT JOB NO.



PERSONNEL	TITLE	PERSONNEL	TITLE
<u>Schneider</u>		<u>Potts</u>	
<u>Mosser</u>			
<u>Barhour</u>			
<u>Redding</u>			

COUNTY Sandusky DATE Dec-1967  
 S. R. U.S. # 6 WEATHER \_\_\_\_\_  
 SEC. Fremont-East TEMP. \_\_\_\_\_

DESCRIPTION Ties for Control Points JOB NO. \_\_\_\_\_

