

O.D.O.T. DISTRICT 2 SURVEY OFFICE (USE ONLY)

PERSONNEL

REFERENCE NO. 43 AA

SHEET 17 OF 34

NOTES LEU

DATE 8/6/18

ROUTE US 6

H.C. LEU

WEATHER CLOUDY

COUNTY SANDUSKY

R.C. HAGEMEYER

TEMP. 78°

TOWNSHIP TOWNSEND

DWG BY AUBLE

PID PAVETRAIN

SECTION 7

T 5 N R 17 E

TYPE MONUMENT P.K.SHANK

ON SURFACE - ~~BELOW~~ ON

OFFSET C PAVEMENT 5.0' ~~LT~~ : RT

7.7' TO RT EDGE PAVEMENT

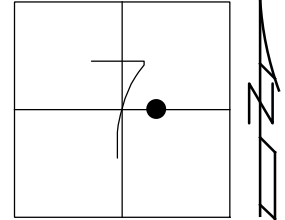
STATION: 1436+56

HORZ.DATUM: NAD83 (2011)

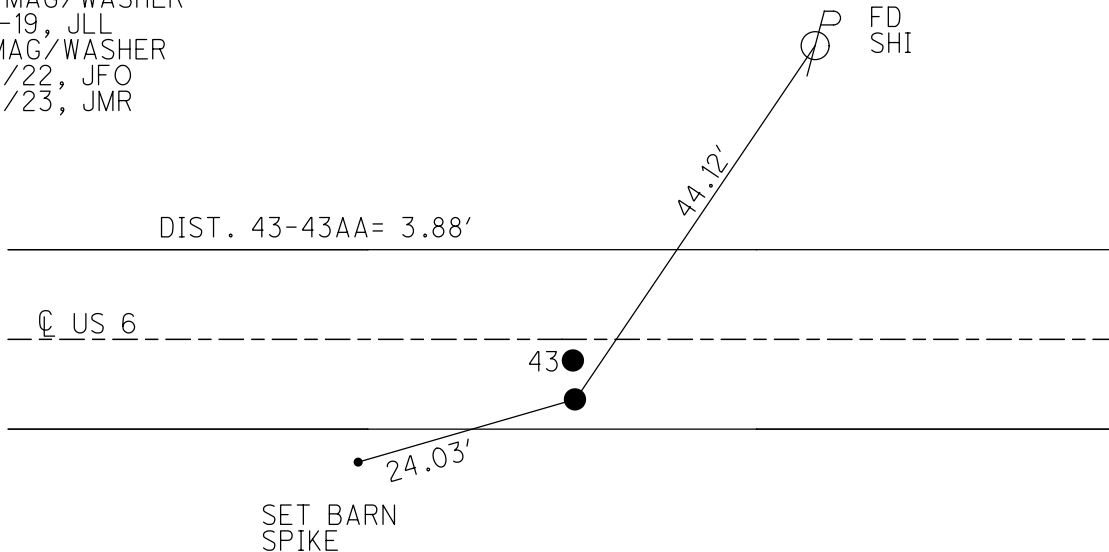
GEOID: 2012A

GRID: NORTHING: 635013.778

EASTING: 1846742.462



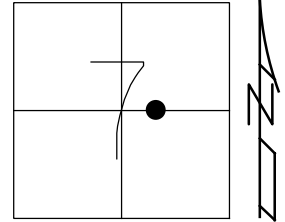
RECORD:
 FD P.K./WASHER
 3" DOWN
 PLAN: CORNER STONE 5.4' RT OF C
 BOOK#1: CORNER STONE 5.2' RT OF C
 SET P.K./WASHER
 FD P.K./WASHER
 3/16/02, DCH
 SET P.K./WASHER
 6/11/02, DCH
 FD P.K.SHANK
 REFA43
 11/23/17, DCH
 SET MAG/WASHER
 7-31-19, JLL
 FD MAG/WASHER
 2/10/22, JFO
 1/20/23, JMR



O.D.O.T. DISTRICT 2 SURVEY OFFICE (USE ONLY)

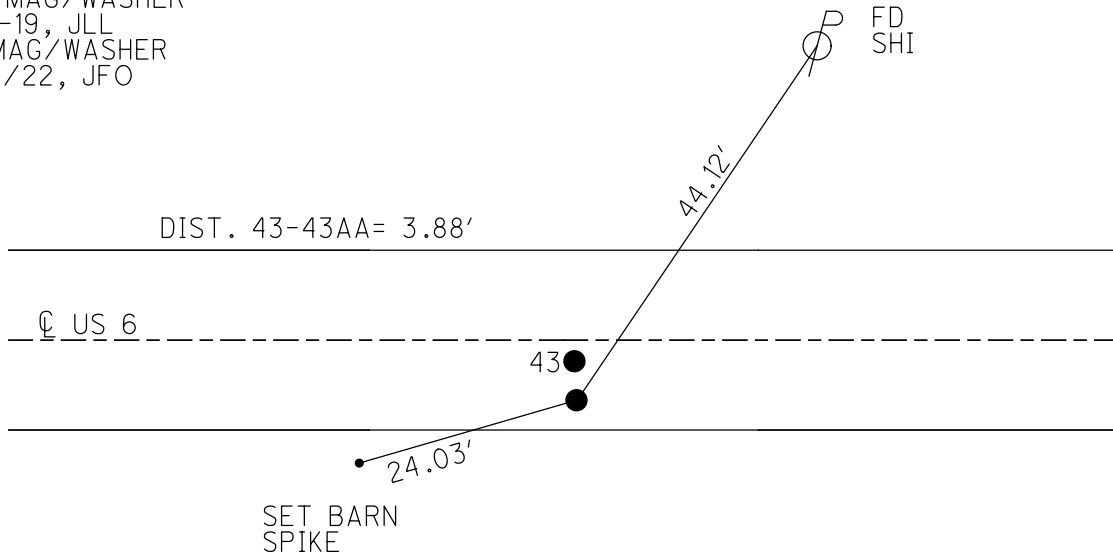
PERSONNEL _____ REFERENCE NO. 43 AA SHEET 17 OF 34
 NOTES LEU DATE 8/6/18 ROUTE US 6
 H.C. LEU WEATHER CLOUDY COUNTY SANDUSKY
 R.C. HAGEMEYER TEMP. 78° TOWNSHIP TOWNSEND
 DWG BY AUBLE PID 95769 SECTION 7
 T 5 N R 17 E

TYPE MONUMENT P.K.SHANK
 ON SURFACE - ~~BELOW~~ ON
 OFFSET ☉ PAVEMENT 5.0' ~~LT~~ : RT
7.7' TO RT EDGE PAVEMENT
 STATION: 1436+56



HORIZ.DATUM: NAD83 (2011) GEOID: 2012A
 GRID: NORTHING: 635013.778 EASTING: 1846742.462

RECORD:
 FD P.K./WASHER
 3" DOWN
 PLAN: CORNER STONE 5.4' RT OF ☉
 BOOK#1: CORNER STONE 5.2' RT OF ☉
 SET P.K./WASHER
 FD P.K./WASHER
 3/16/02, DCH
 SET P.K./WASHER
 6/11/02, DCH
 FD P.K.SHANK
 REFA43
 11/23/17, DCH
 SET MAG/WASHER
 7-31-19, JLL
 FD MAG/WASHER
 2/10/22, JFO



O.D.O.T. DISTRICT 2 SURVEY OFFICE (USE ONLY)

PERSONNEL

REFERENCE NO. 43 AA

SHEET 17 OF 34

NOTES LEU

DATE 8/6/18

ROUTE US 6

H.C. LEU

WEATHER CLOUDY

COUNTY SANDUSKY

R.C. HAGEMeyer

TEMP. 78°

TOWNSHIP TOWNSEND

SECTION 7

DWG BY AUBLE PID 95769

T 5 N R 17 E

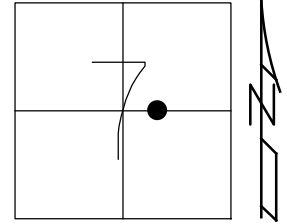
TYPE MONUMENT P.K.SHANK

ON SURFACE - ~~BELOW~~ ON

OFFSET \odot PAVEMENT 5.0' ~~LT~~ : RT

7.7' TO RT EDGE PAVEMENT

STATION: 1436+56



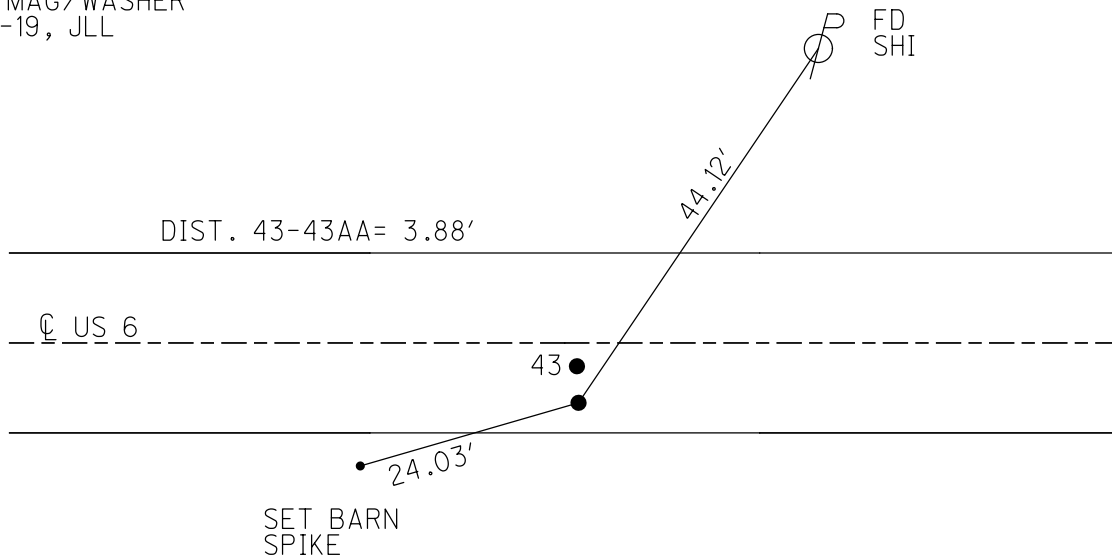
HORZ.DATUM: NAD83 (2011)

GEOID: 2012A

GRID: NORTHING: 635013.778

EASTING: 1846742.462

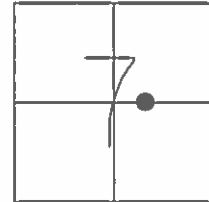
RECORD:
 FD P.K./WASHER
 3" DOWN
 PLAN: CORNER STONE 5.4' RT OF \odot
 BOOK#1: CORNER STONE 5.2' RT OF \odot
 SET P.K./WASHER
 FD P.K./WASHER
 3/16/02, DCH
 SET P.K./WASHER
 6/11/02, DCH
 FD P.K.SHANK
 REFA43
 11/23/17, DCH
 SET MAG/WASHER
 7-31-19, JLL



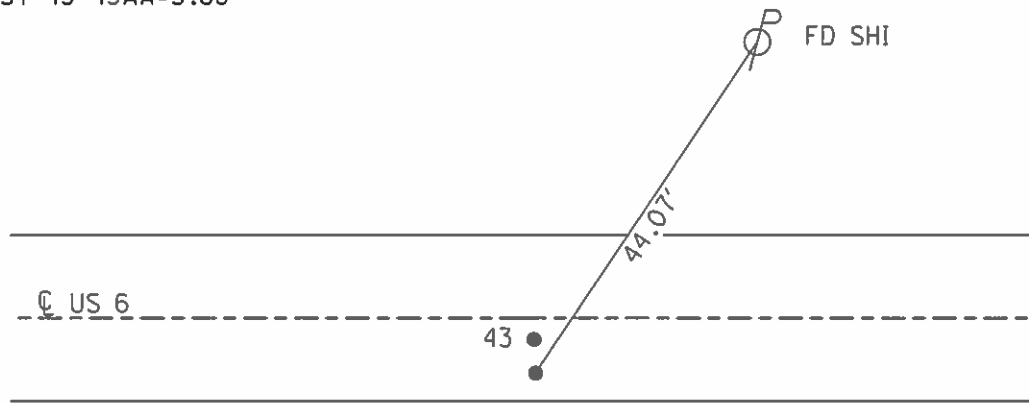
O.D.O.T. DISTRICT 2 SURVEY OFFICE (USE ONLY)

PERSONNEL _____ REFERENCE NO. 43 AA SHEET 15 OF 31
 NOTES ROUSOS DATE 03/16/02 ROUTE US 6
 H.C. VAN DUSEN WEATHER WINDY COUNTY SANDUSKY
 R.C. MOSSER TEMP. 28° TOWNSHIP TOWNSEND
 _____ HOMAN _____ SECTION 7
 _____ T 5 N R 17 E

TYPE MONUMENT PK/WASHER
 ON SURFACE - ~~BELOW~~ ON
~~LEFT~~ - ☉ PAV'T - RIGHT 5'
7.7' TO RT EDGE PAVEMENT
 S.L.M. 1436+56
 GRID: NORTHING: - EASTING: -



RECORD:
 PK/WASHER 3" BELOW
 PLAN: CORNER STONE 5.4' RT OF ☉
 BOOK#1: CORNER STONE 5.2' RT OF ☉
 SET PK/WASHER
 SET PK/WASHER
 06/11/02 DCH
 DIST 43-43AA=3.88'



O.D.O.T. DISTRICT 2 SURVEY OFFICE

PERSONNEL

REFERENCE NO. 43

SHEET 12 OF 27

NOTES: ROUSOS

DATE 3/16/02

ROUTE US SR 6

H.C. VAN DUSEN

WEATHER WINDY

COUNTY SANDUSKY

R.C. MOSSER

TEMP. 28°

TOWNSHIP TOWNSEND

HOMAN

SECTION 7

T 5 N R 17 E

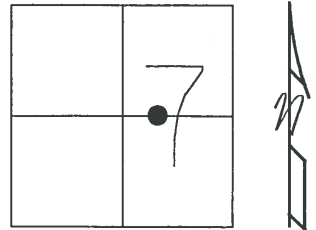
TYPE MONUMENT PK/WASHER

ON SURFACE - BELOW ON

LEFT - Q PAV'T - ~~RIGHT~~ "A" = 1' RT "B" 5' RT

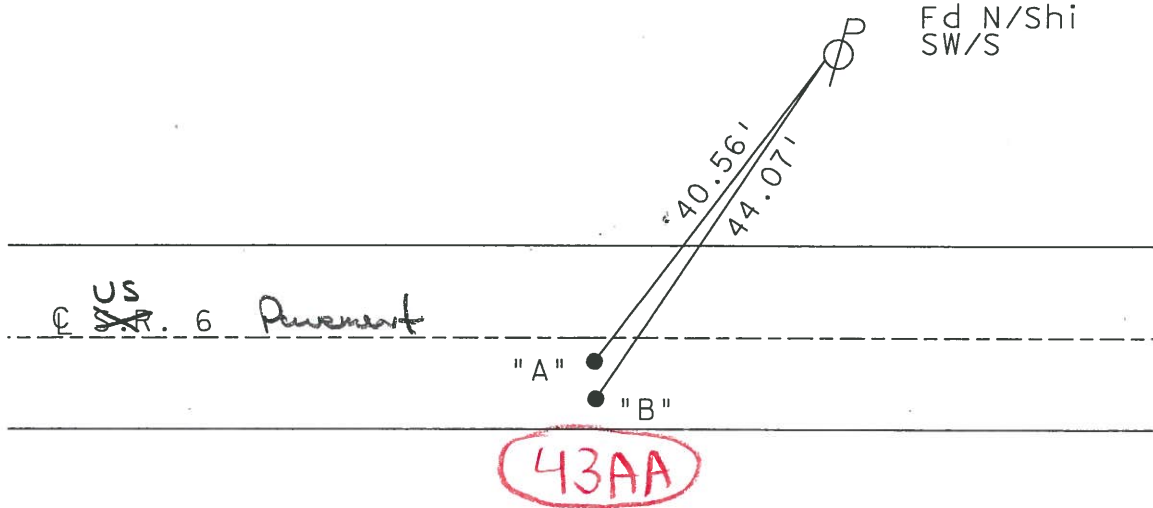
TO EDGE PAVEMENT "A" 11' TO RT EDGE
"B" 7.7' TO RT EDGE

S.L.M. 1436+56



"A"
P.I. DELTA = 00° 20' LT (PLAN)
STA 196+14.60
BOAT SPIKE 2" BELOW
(FD PK/WASHER 1.25" BELOW SURFACE)
"B"
PK/WASHER 3" BELOW
PLAN: CORNER STONE 5.4' RT OF Q
BOOK #1: CORNER STONE 5.2' RT OF Q
RESET PK/WASHER

SET PK/WASHER
6-11-02
DCH



DIST "A" - "B" = 3.88'

O.D.O.T. DISTRICT 2 SURVEY OFFICE

PERSONNEL _____

REFERENCE NO. _____

SHEET 24 OF 39

NOTES CHENEY

H.C. RIPPLE

R.C. BARBOUR

DATE 9-16-1991

WEATHER SUNNY

TEMP. 85°

ROUTE 6

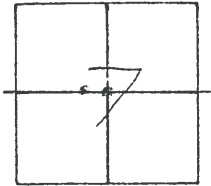
COUNTY SANDUSKY

TOWNSHIP TOWNSEND

SECTION 7

T 5 N R 17 E

TYPE MONUMENT PKs/WASHERS
 ON SURFACE - BELOW "A" - 1.25' BELOW "B" - ON
~~LEFT~~ - CL PAV'T. - RIGHT "A" - 1'± "B" - 5'±
TO - EDGE PAVEMENT
 S.L.M. 1436+56



"A"

P.I. $\Delta = 00^{\circ}20'$ LT. (PLAN)

STA. 196+14.60

BOAT SPR. 2'± BELOW (FO PK/WASHER 1.25" BELOW SURFACE)

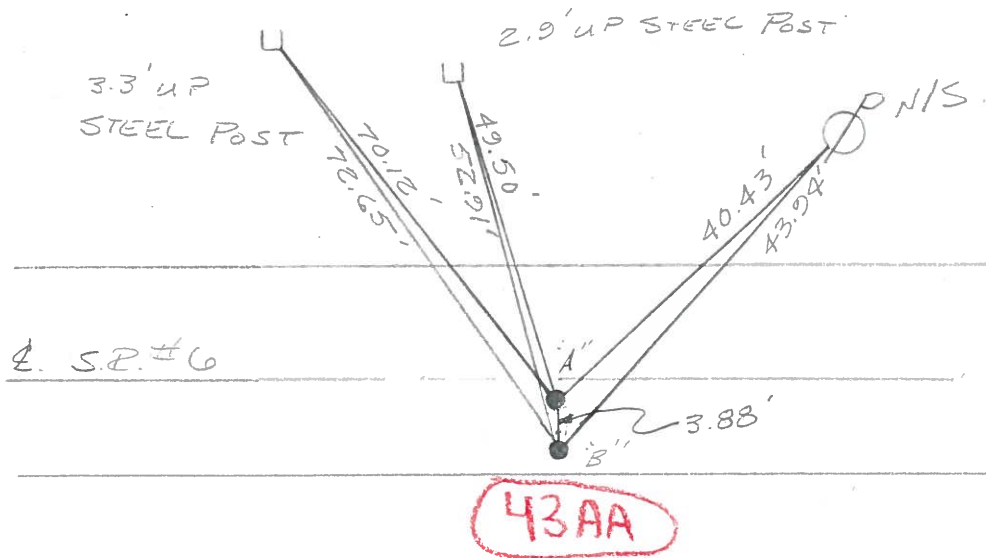
"B"

PK/WASHER 3'± BELOW

PLAN: CORNER STONE 5.4' RT. OF CL

BOOK #1: CORNER STONE 5.2' RT OF CL

RE-SET P.K/WASHER



Q.D.O.T. DISTRICT 2 SURVEY OFFICE

SHEET _____ OF _____

County Sandusky S.R. U.S. #6

Date 9/24/84

Township Townsend

Weather sunny

Section 7

Temp. 70°

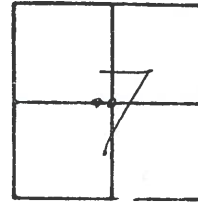
T5N, R12E

Personnel Cronin

Ripple

Geyman

Barbour



43AA

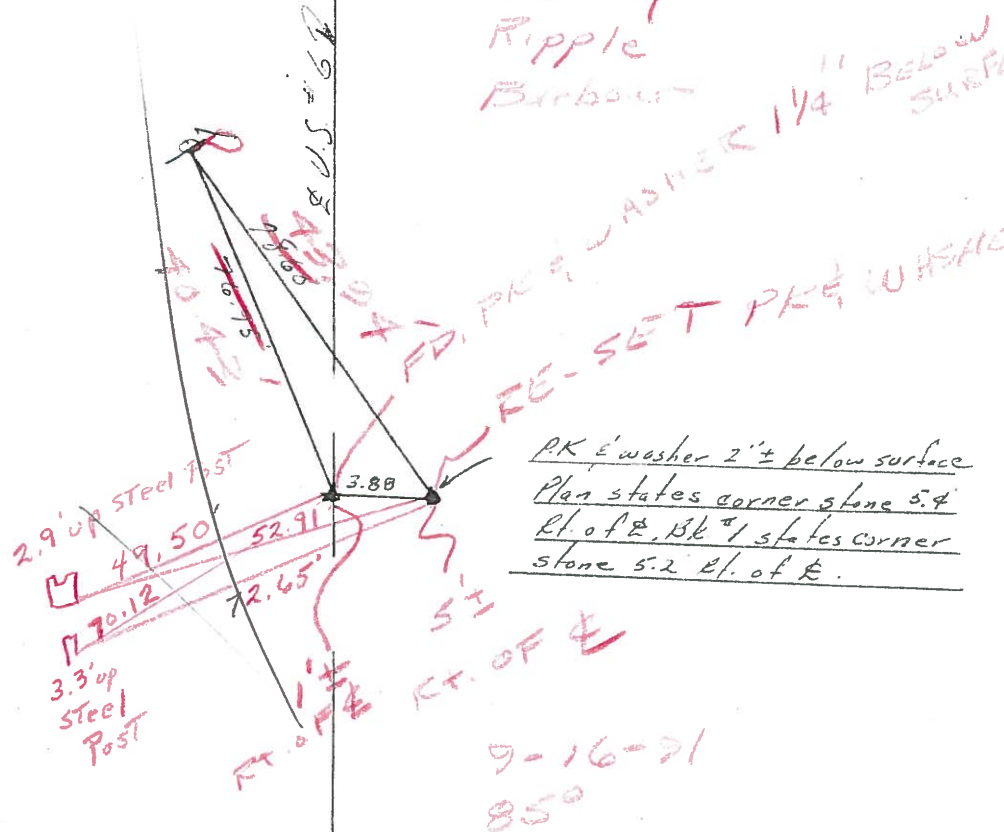
4/03/91
40°

1436+56

P.I. $\Delta = 00^{\circ}20'44''$ (Plan)

196+14.60

Boat spike 2' below surface



PK & washer 2' ± below surface
Plan states corner stone 5.4'
E. of E. Bl. #1 states corner
stone 5.2 E. of E.

9-16-91
85°

Q.D.O.T. DISTRICT 2 SURVEY OFFICE

SHEET _____ OF _____

County Sandusky S.R. U.S.#6

Date 9/24/84

Township Townsend

Weather sunny

Section 7

Temp. 70°

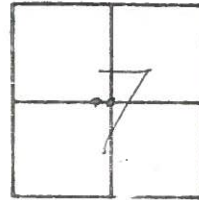
T5N, R17E

Personnel Crosin

Ripple

Geeman

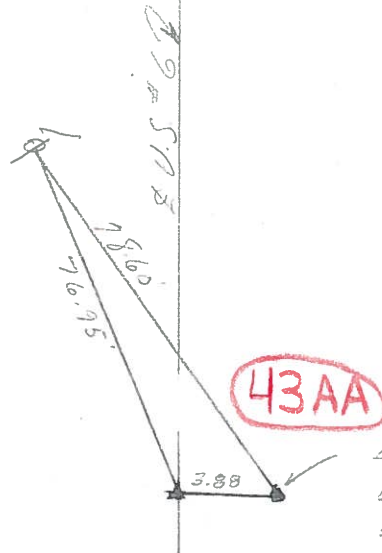
Barbour



P.I. Δ = 00°20'44" (Plan)

196+14.60

Boat spike 2'± below surface



A.K. E washer 2'± below surface
Plan states corner stone 5.4'
Et. of E, Bk 1 states corner
stone 5.2 Et. of E.

PERSONNEL	TITLE	PERSONNEL	TITLE
<u>Cronin</u>		<u>Schneider</u>	
<u>Ash</u>		<u>Mosser</u>	
<u>Geyman</u>		<u>Barbour</u>	

COUNTY Sandusky

DATE Tied 7/31/75
drawn 7/30/75

S. R. # 6

WEATHER Sunny

SEC. "L" - Fremont - East TEMP. 83°

DESCRIPTION Ties for Control Points

JOB NO. _____

