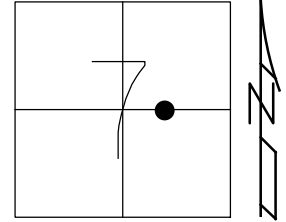


O.D.O.T. DISTRICT 2 SURVEY OFFICE (USE ONLY)

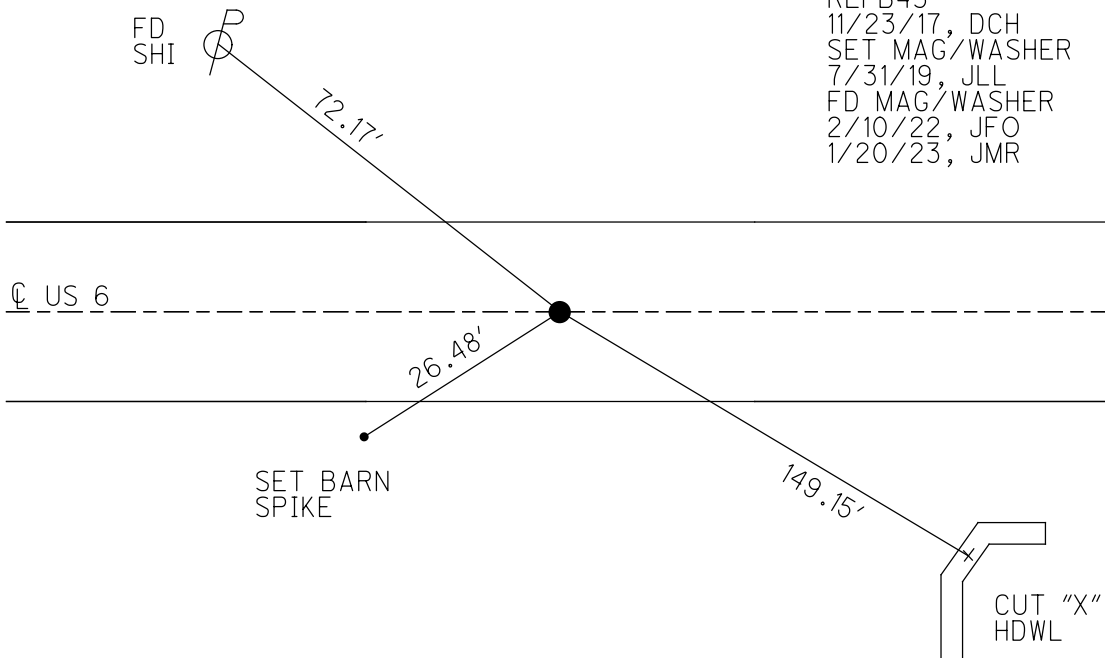
PERSONNEL _____ REFERENCE NO. 43 A SHEET 18 OF 34
 NOTES LEU DATE 08-06-2018 ROUTE US 6
 H.C. LEU WEATHER CLOUDY COUNTY SANDUSKY
 R.C. HAGEMeyer TEMP. 78° TOWNSHIP TOWNSEND
 DWG BY AUBLE PID PAVETRAIN SECTION 7
 T 5 N R 17 E

TYPE MONUMENT P.K./WASHER
 ON SURFACE - ~~BELOW~~ ON
 OFFSET Q PAVEMENT 0.8' LT : ~~RT~~
12' TO LT EDGE PAVEMENT
 STATION: 1448+44



HORZ.DATUM: NAD83 (2011) GEOID: 2012A
 GRID: NORTHING: 634956.064 EASTING: 1847928.742

RECORD: P.I.
 $\Delta=00^{\circ} 45' RT$ (PLAN)
 STA. 208+01.90
 PREVIOUS MONUMENTS:
 P.K./WASHER
 BOAT SPIKE
 FD P.K./WASHER
 3/16/02, DCH
 SET P.K./WASHER
 6/11/02, DCH
 FD P.K./WASHER
 REFB43
 11/23/17, DCH
 SET MAG/WASHER
 7/31/19, JLL
 FD MAG/WASHER
 2/10/22, JFO
 1/20/23, JMR



O.D.O.T. DISTRICT 2 SURVEY OFFICE (USE ONLY)

PERSONNEL

REFERENCE NO. 43 A

SHEET 18 OF 34

NOTES LEU
 H.C. LEU
 R.C. HAGEMEYER

DATE 08-06-2018
 WEATHER CLOUDY
 TEMP. 78°

ROUTE US 6
 COUNTY SANDUSKY
 TOWNSHIP TOWNSEND
 SECTION 7
 T 5 N R 17 E

DWG BY AUBLE PID 95769

TYPE MONUMENT P.K./WASHER

ON SURFACE - ~~BELOW~~ ON

OFFSET \odot PAVEMENT 0.8' LT : ~~RT~~

12' TO LT EDGE PAVEMENT

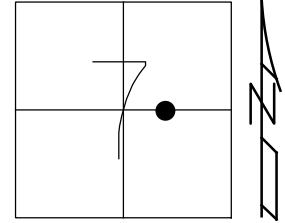
STATION: 1448+44

HORZ. DATUM: NAD83 (2011)

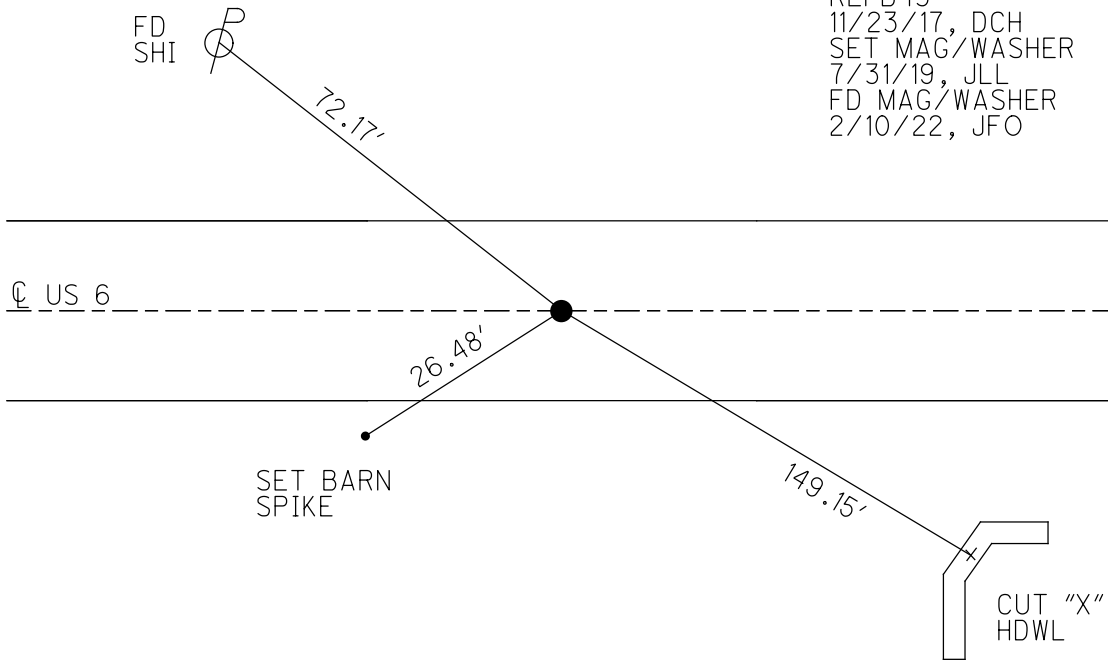
GEOID: 2012A

GRID: NORTHING: 634956.064

EASTING: 1847928.742



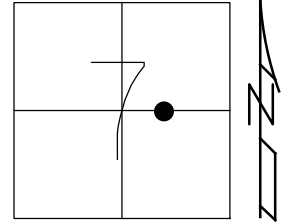
RECORD: P.I.
 $\Delta=00^{\circ} 45' RT$ (PLAN)
 STA. 208+01.90
 PREVIOUS MONUMENTS:
 P.K./WASHER
 BOAT SPIKE
 FD P.K./WASHER
 3/16/02, DCH
 SET P.K./WASHER
 6/11/02, DCH
 FD P.K./WASHER
 REFB43
 11/23/17, DCH
 SET MAG/WASHER
 7/31/19, JLL
 FD MAG/WASHER
 2/10/22, JFO



O.D.O.T. DISTRICT 2 SURVEY OFFICE (USE ONLY)

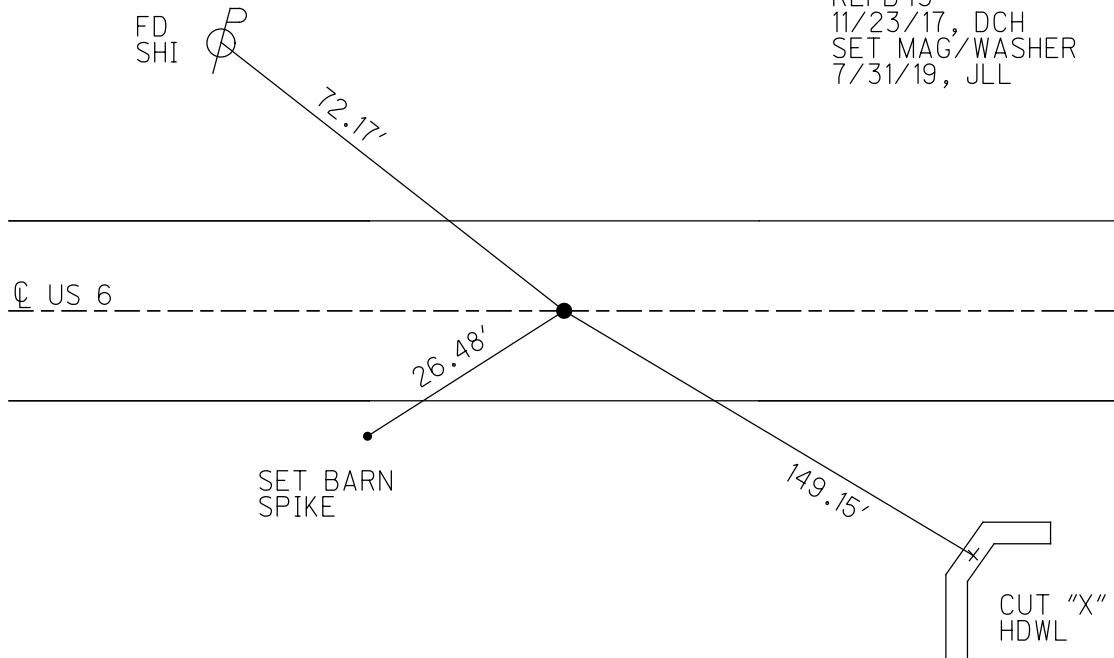
PERSONNEL _____ REFERENCE NO. 43 A SHEET 18 OF 34
 NOTES LEU DATE 08-06-2018 ROUTE US 6
 H.C. LEU WEATHER CLOUDY COUNTY SANDUSKY
 R.C. HAGEMAYER TEMP. 78° TOWNSHIP TOWNSEND
 DWG BY AUBLE PID 95769 SECTION 7
 T 5 N R 17 E

TYPE MONUMENT P.K./WASHER
 ON SURFACE - ~~BELOW~~ ON
 OFFSET \varnothing PAVEMENT 0.8' LT : ~~RT~~
12' TO LT EDGE PAVEMENT
 STATION: 1448+44



HORZ.DATUM: NAD83 (2011) GEOID: 2012A
 GRID: NORTHING: 634956.064 EASTING: 1847928.742

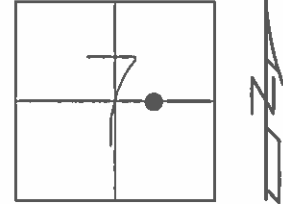
RECORD: P.I.
 $\Delta=00^{\circ} 45' RT$ (PLAN)
 STA. 208+01.90
 PREVIOUS MONUMENTS:
 P.K./WASHER
 BOAT SPIKE
 FD P.K./WASHER
 3/16/02, DCH
 SET P.K./WASHER
 6/11/02, DCH
 FD P.K./WASHER
 REFB43
 11/23/17, DCH
 SET MAG/WASHER
 7/31/19, JLL



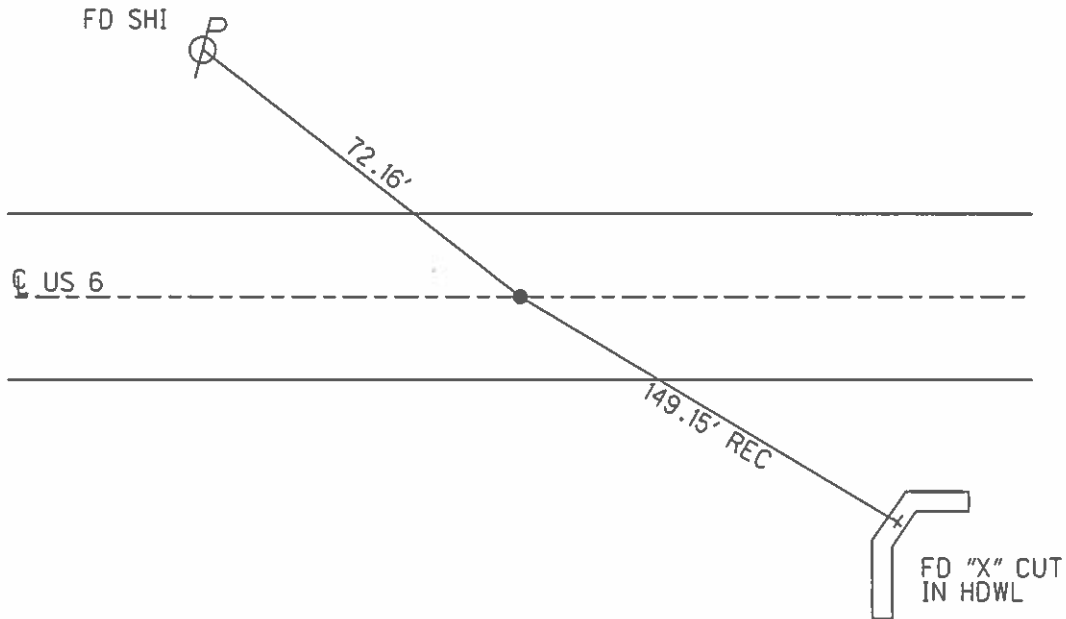
O.D.O.T. DISTRICT 2 SURVEY OFFICE (USE ONLY)

PERSONNEL _____ REFERENCE NO. 43 A SHEET 16 OF 31
 NOTES ROUSOS DATE 03/16/02 ROUTE US 6
 H.C. VAN DUSEN WEATHER WINDY COUNTY SANDUSKY
 R.C. MOSSER TEMP. 28° TOWNSHIP TOWNSEND
 _____ SECTION 7
 _____ T 5 N R 17 E

TYPE MONUMENT _____ PK/WASHER _____
 ON SURFACE - ~~BELOW~~ _____ ON _____
~~LEFT~~ - Q PAV'T - ~~RIGHT~~ _____ ON _____
12' TO LT EDGE PAVEMENT
 S.L.M. _____ 1448+44
 GRID: NORTHING: _____ EASTING: _____



RECORD: P1
 DELTA=00°45' RT (PLAN)
 STA 208+01.90
 PREVIOUS MONUMENTS
 PK/WASHER
 BOAT SPK
 SET PK/WASHER
 06/11/02 DCH



O.D.O.T. DISTRICT 2 SURVEY OFFICE

PERSONNEL _____

REFERENCE NO. _____

SHEET 25 OF 39

NOTES CHENEY

H.C. RIPPLE

DATE 9-16-1991

ROUTE 6

R.C. BARBOUR

WEATHER SUNNY

COUNTY SANDUSKY

TEMP. 85°

TOWNSHIP TOWNSEND

SECTION 7

T5N R17E

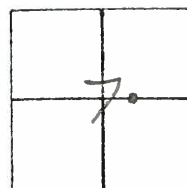
TYPE MONUMENT P.K./WASHER

ON SURFACE - BELOW

LEFT-☉ PAV'T. - RIGHT _____

— TO — EDGE PAVEMENT

S.L.M. 1448+44



P.I.

$\Delta = 00^\circ 45'$ (PLAN)

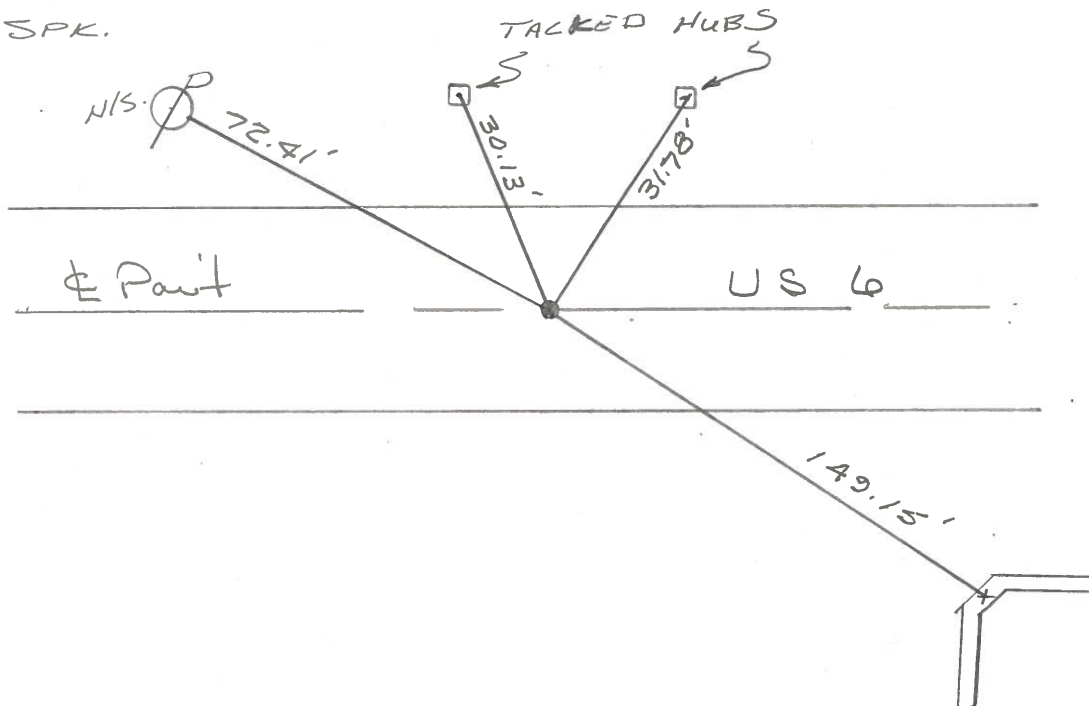
STA. 208+01.90

43A

PREVIOUS MONUMENTS

P.K./WASHER

BOAT SPK.



4" CUT IN HDWL.

Q.D.O.T. DISTRICT 2 SURVEY OFFICE

SHEET _____ OF _____

County Sandusky S. R. U.S. #6

Date 9/24/84

Township Townsend

Weather sunny

Section 7

Temp. 73°

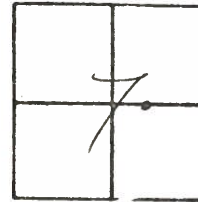
T5N, R1E

Personnel Cronin

Ripple

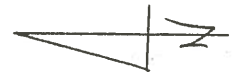
Geyman

Barbour



43A

CHENEY
RIPPLE
BARBOUR



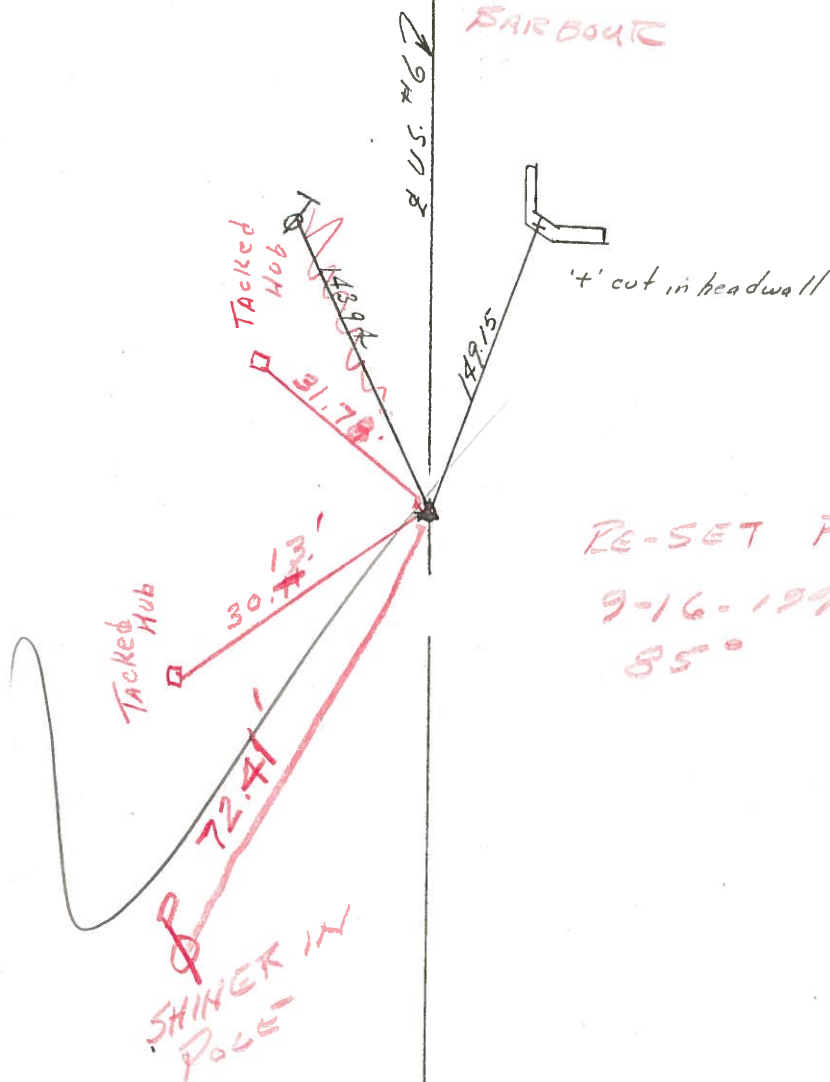
4/03/91
40°

1448+44

P.I. Δ = 00°45' Rt. (Plan)

208+01.90

Set P.K. & washer at top
boat spike



RE-SET P.K. & WASHER
9-16-1991
85°

Q.D.O.T. DISTRICT 2 SURVEY OFFICE

SHEET _____ OF _____

County Sandusky S. R. U.S. #6

Date 9/24/84

Township Townsend

Weather sunny

Section 7

Temp. 73°

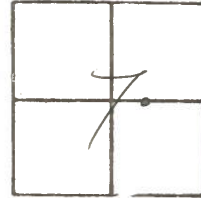
T5N, R12E

Personnel Cronin

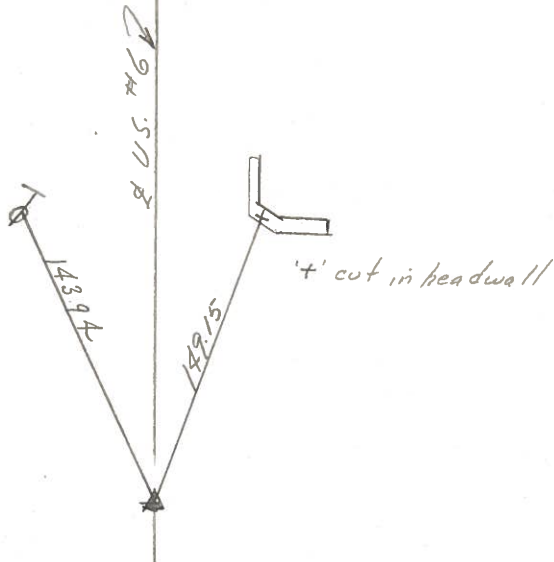
Ripple

Geyman

Barbour



43A



P.F. Δ = 00°45' Rt. (Plan)

208 + 01.90

Set P.K. & washer at top
boat spike

PERSONNEL	TITLE	PERSONNEL	TITLE
<u>Cronin</u>		<u>Schneider</u>	
<u>Ash</u>		<u>Mosser</u>	
<u>Geyman</u>		<u>Barbour</u>	

COUNTY Sandusky

Tied 7/31/75

DATE Drawn 7/30/75

S. R. # 6

WEATHER Sunny

SEC. "L" - Fremant - East

TEMP. 73°

DESCRIPTION Ties for Control Points

JOB NO. _____

