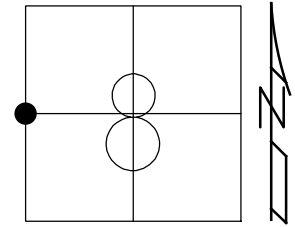


O.D.O.T. DISTRICT 2 SURVEY OFFICE (USE ONLY)

PERSONNEL _____ REFERENCE NO. 44 SHEET 19 OF 34
 NOTES LEU DATE 8/6/18 ROUTE US 6
 H.C. LEU WEATHER SUNNY COUNTY SANDUSKY
 R.C. HAGEMeyer TEMP. 84° TOWNSHIP TOWNSEND
 DWG BY AUBLE PID PAVETRAIN SECTION 8
 T 5 N R 17 E

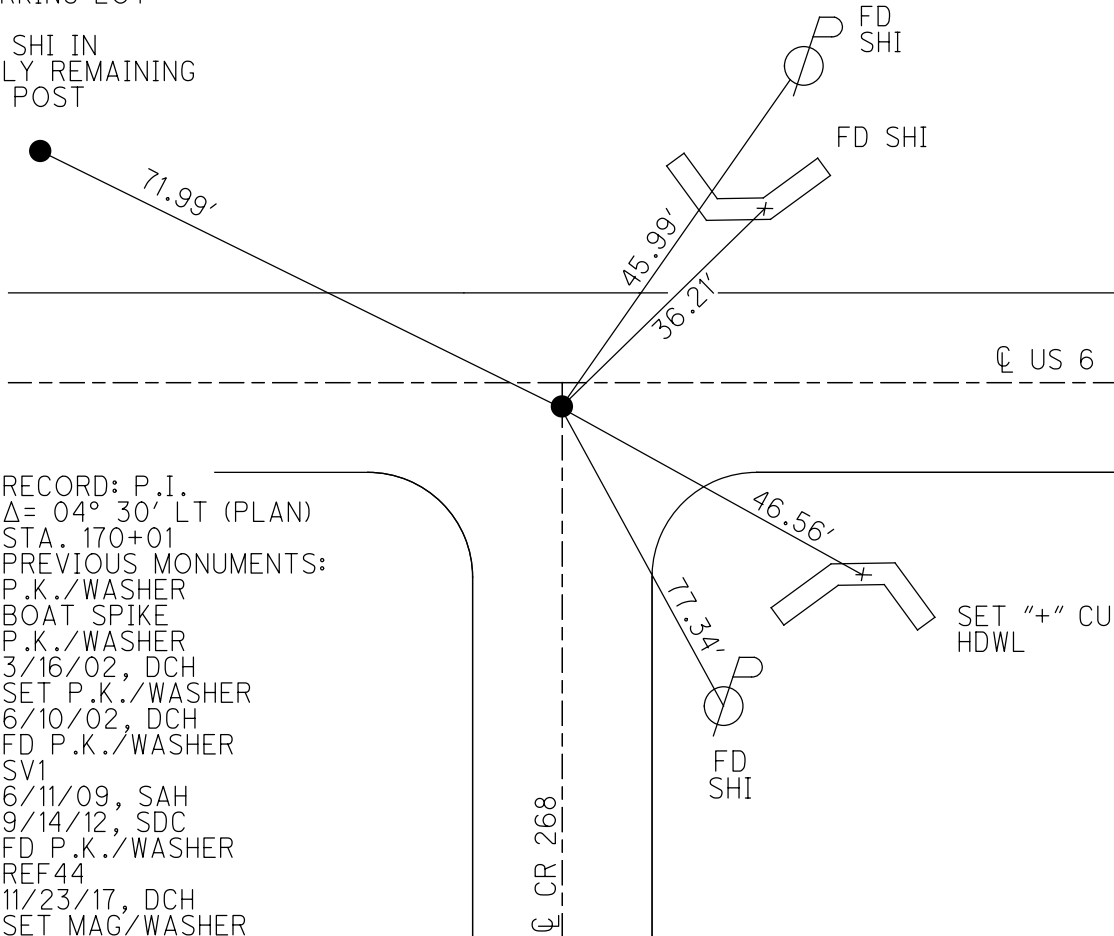
TYPE MONUMENT P.K./WASHER
 ON SURFACE - ~~BELOW~~ ON
 OFFSET ϕ PAVEMENT 2.6' \pm : RT
15.7' TO LT EDGE PAVEMENT
 STATION: 1463+16



HORZ.DATUM: NAD83 (2011) GEOID: 2012A
 GRID: NORTHING: 634860.616 EASTING: 1849397.758

PARKING LOT

FD SHI IN
 ONLY REMAINING
 GR POST

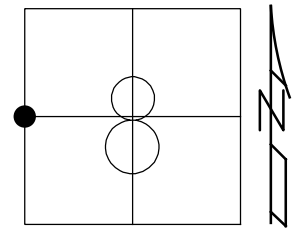


RECORD: P.I.
 $\Delta = 04^\circ 30'$ LT (PLAN)
 STA. 170+01
 PREVIOUS MONUMENTS:
 P.K./WASHER
 BOAT SPIKE
 P.K./WASHER
 3/16/02, DCH
 SET P.K./WASHER
 6/10/02, DCH
 FD P.K./WASHER
 SV1
 6/11/09, SAH
 9/14/12, SDC
 FD P.K./WASHER
 REF44
 11/23/17, DCH
 SET MAG/WASHER
 7-31-2019, JLL
 FD MAG/WASHER
 2/10/22, JFO
 1/20/23, JMR

O.D.O.T. DISTRICT 2 SURVEY OFFICE (USE ONLY)

PERSONNEL _____ REFERENCE NO. 44 SHEET 19 OF 34
 NOTES LEU DATE 8/6/18 ROUTE US 6
 H.C. LEU WEATHER SUNNY COUNTY SANDUSKY
 R.C. HAGEMeyer TEMP. 84° TOWNSHIP TOWNSEND
 DWG BY AUBLE PID 95769 SECTION 8
 T 5 N R 17 E

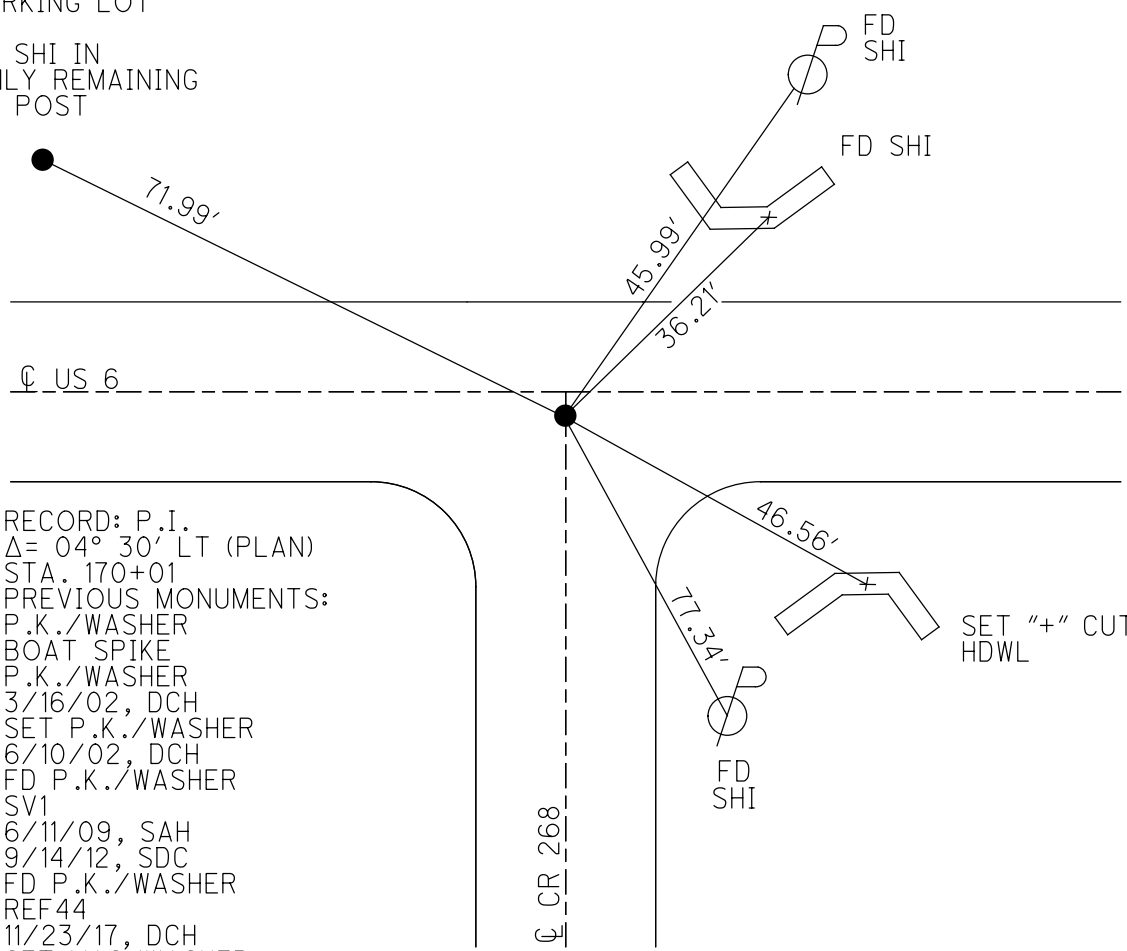
TYPE MONUMENT P.K./WASHER
 ON SURFACE - ~~BELOW~~ ON
 OFFSET CL PAVEMENT 2.6' ~~RT~~ : RT
15.7' TO LT EDGE PAVEMENT
 STATION: 1463+16



HORZ. DATUM: NAD83 (2011) GEOID: 2012A
 GRID: NORTHING: 634860.616 EASTING: 1849397.758

PARKING LOT

FD SHI IN
 ONLY REMAINING
 GR POST



RECORD: P.I.
 $\Delta = 04^\circ 30'$ LT (PLAN)
 STA. 170+01
 PREVIOUS MONUMENTS:
 P.K./WASHER
 BOAT SPIKE
 P.K./WASHER
 3/16/02, DCH
 SET P.K./WASHER
 6/10/02, DCH
 FD P.K./WASHER
 SV1
 6/11/09, SAH
 9/14/12, SDC
 FD P.K./WASHER
 REF44
 11/23/17, DCH
 SET MAG/WASHER
 7-31-2019, JLL
 FD MAG/WASHER
 2/10/22, JFO

O.D.O.T. DISTRICT 2 SURVEY OFFICE (USE ONLY)

PERSONNEL

REFERENCE NO. 44

SHEET 19 OF 34

NOTES LEU

DATE 8/6/18

ROUTE US 6

H.C. LEU

WEATHER SUNNY

COUNTY SANDUSKY

R.C. HAGEMeyer

TEMP. 84°

TOWNSHIP TOWNSEND

DWG BY AUBLE

PID 95769

SECTION 8

T 5 N R 17 E

TYPE MONUMENT P.K./WASHER

ON SURFACE - ~~BELOW~~ ON

OFFSET 2.6' $\overline{\text{RT}}$: RT

15.7' TO LT EDGE PAVEMENT

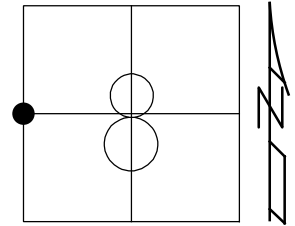
STATION: 1463+16

HORZ.DATUM: NAD83 (2011)

GEOID: 2012A

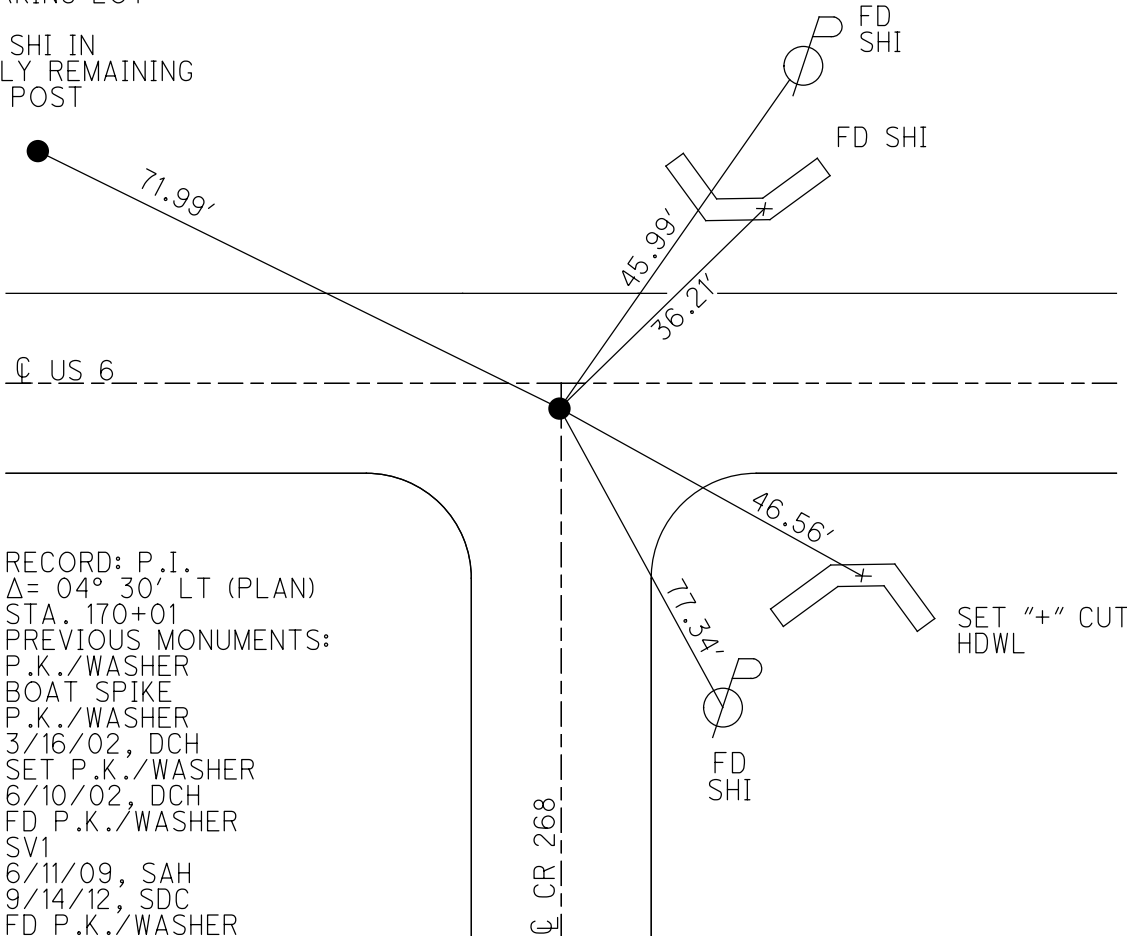
GRID: NORTHING: 634860.616

EASTING: 1849397.758



PARKING LOT

FD SHI IN
ONLY REMAINING
GR POST



RECORD: P.I.
 $\Delta = 04^\circ 30'$ LT (PLAN)
 STA. 170+01
 PREVIOUS MONUMENTS:
 P.K./WASHER
 BOAT SPIKE
 P.K./WASHER
 3/16/02, DCH
 SET P.K./WASHER
 6/10/02, DCH
 FD P.K./WASHER
 SV1
 6/11/09, SAH
 9/14/12, SDC
 FD P.K./WASHER
 REF44
 11/23/17, DCH
 SET MAG/WASHER
 7-31-2019, JLL

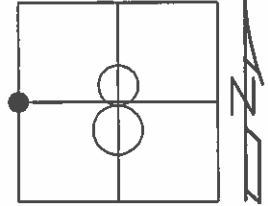
$\overline{\text{CR 268}}$

$\overline{\text{US 6}}$

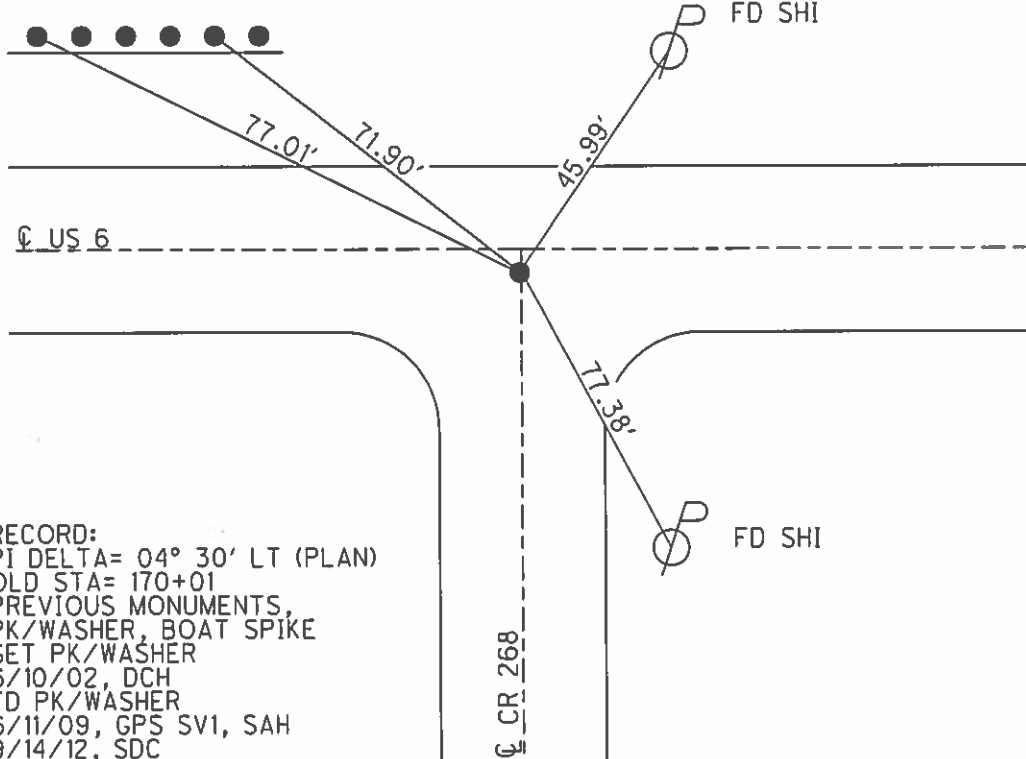
O.D.O.T. DISTRICT 2 SURVEY OFFICE (USE ONLY)

PERSONNEL _____ REFERENCE NO. 44 SHEET 17 OF 31
 NOTES RHOADES DATE 05/16/13 ROUTE US 6
 H.C. CODER WEATHER SUNNY COUNTY SANDUSKY
 R.C. RHOADES TEMP. 86° TOWNSHIP TOWNSEND
 _____ SECTION 8
 _____ T 5 N R 17 E

TYPE MONUMENT PK/WASHER
 ON SURFACE - ~~BELOW~~ ON
~~LEFT~~ - Q PAV'T - RIGHT 2.6'
15.7' TO LT EDGE PAVEMENT
 S.L.M. 1465+72.80
 GRID: NORTHING: 634860.600 EASTING: 1849397.680



SET SHI'S IN GR POSTS



RECORD:
 PI DELTA= 04° 30' LT (PLAN)
 OLD STA= 170+01
 PREVIOUS MONUMENTS,
 PK/WASHER, BOAT SPIKE
 SET PK/WASHER
 6/10/02, DCH
 FD PK/WASHER
 6/11/09, GPS SV1, SAH
 9/14/12, SDC

O.D.O.T. DISTRICT 2 SURVEY OFFICE USE ONLY

PERSONNEL

REFERENCE NO. 44

SHEET 17 OF 31

NOTES ROUSOS

DATE 3/16/02

ROUTE US 6

H.C. VAN DUSEN

WEATHER WINDY

COUNTY SANDUSKY

R.C. MOSSER

TEMP. 28°

TOWNSHIP TOWNSEND

HOMAN

SECTION 8

T 5 N R 17 E

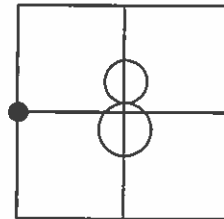
TYPE MONUMENT PK/WASHER

ON SURFACE - ~~BELOW~~ ON

~~LEFT~~ - Q PAV'T - RIGHT 3.0'

15.7' TO LT. EDGE PAVEMENT

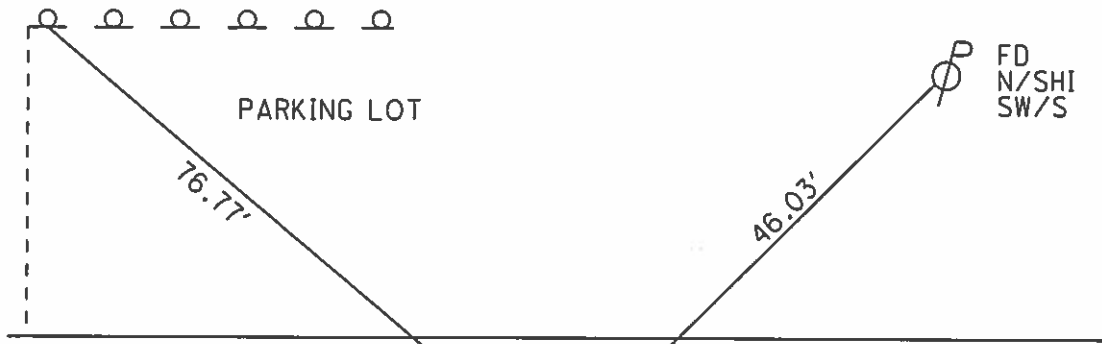
S.L.M. 1463+16



SET N/SHI
W END GRAIL POST



PARKING LOT



Q US 6

P
FD
N/SHI
SW/S

38.53'



FD "X" CUT
IN CONC HDWL

77.31'

P
SET
N/SHI
NW/S

P.I. DELTA=04°30' LT (PLAN)
OLD STA 170+01
PREVIOUS MONUMENTS
PK/WASHER
BOAT SPK

SET PK/WASHER
6-10-02
DCH

Q CR 268

O.D.O.T. DISTRICT 2 SURVEY OFFICE

PERSONNEL

REFERENCE NO. 44

SHEET 26 OF 39

NOTES CHENEY

H.C. RIPPLE

R.C. BARBOUR

DATE 9-16-1991

WEATHER SUNNY

TEMP. 85°

ROUTE 6

COUNTY SANDUSKY

TOWNSHIP TOWNSEND

SECTION 7-8

T5N R17E

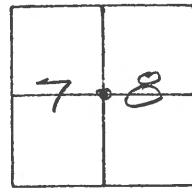
TYPE MONUMENT PK/WASHER

ON SURFACE - BELOW

~~LEFT~~ - Q PAV'T. - RIGHT 3'±

TO EDGE PAVEMENT

S.L.M. 1463+16



P.I.

$\Delta = 04^{\circ} 30'$ LT. (PLAN)

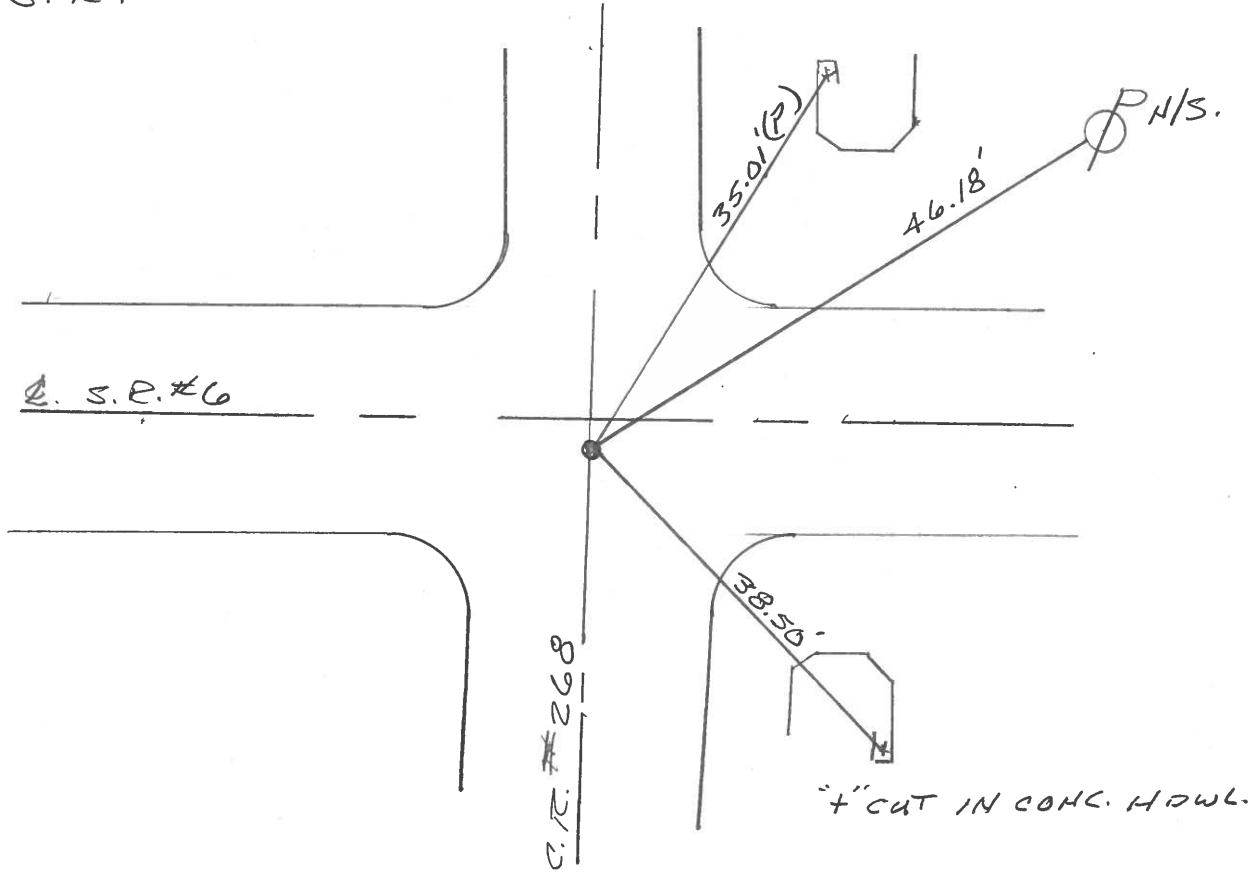
STA. = 222+70.8

PREVIOUS MONUMENTS

P.K/WASHER

BOAT SPK.

4" CUT IN CONC. HOWL.



OD.O.T. DISTRICT 2 SURVEY OFFICE

SHEET _____ OF _____

County Sandusky S.R. U.S. #6

Township Townsend

Section 7 & 8

T⁵N, R¹²E

Personnel Cronin

Ripple

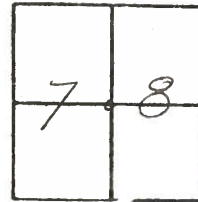
Geyman

Barbour

Date 9/24/84

Weather sunny

Temp. 75°



44

4/03/91
40°

1463+16

CHENEY
RIPPLE
BARBOUR

9-16-1991
85°



P.I. A-0430 Lt. Plan

222+70.8

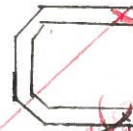
set PK & washer at top
boat spike & washer
3'± lt & paint

+ cut in conc. hdwl



35.01
Plumb

U.S. #6



+ cut in conc. hdwl
WALL BROKEN

32.14
Straight line

C.R. #268

RG-SET PK & WASHER
3'± RT. OF E.

85°

Q.D.O.T. DISTRICT 2 SURVEY OFFICE

SHEET _____ OF _____

County Sandusky S. R. U.S. # 6

Date 9/24/84

Township Townsend

Weather SUNNY

Section 7E8

Temp. 75°

T5N, R17E

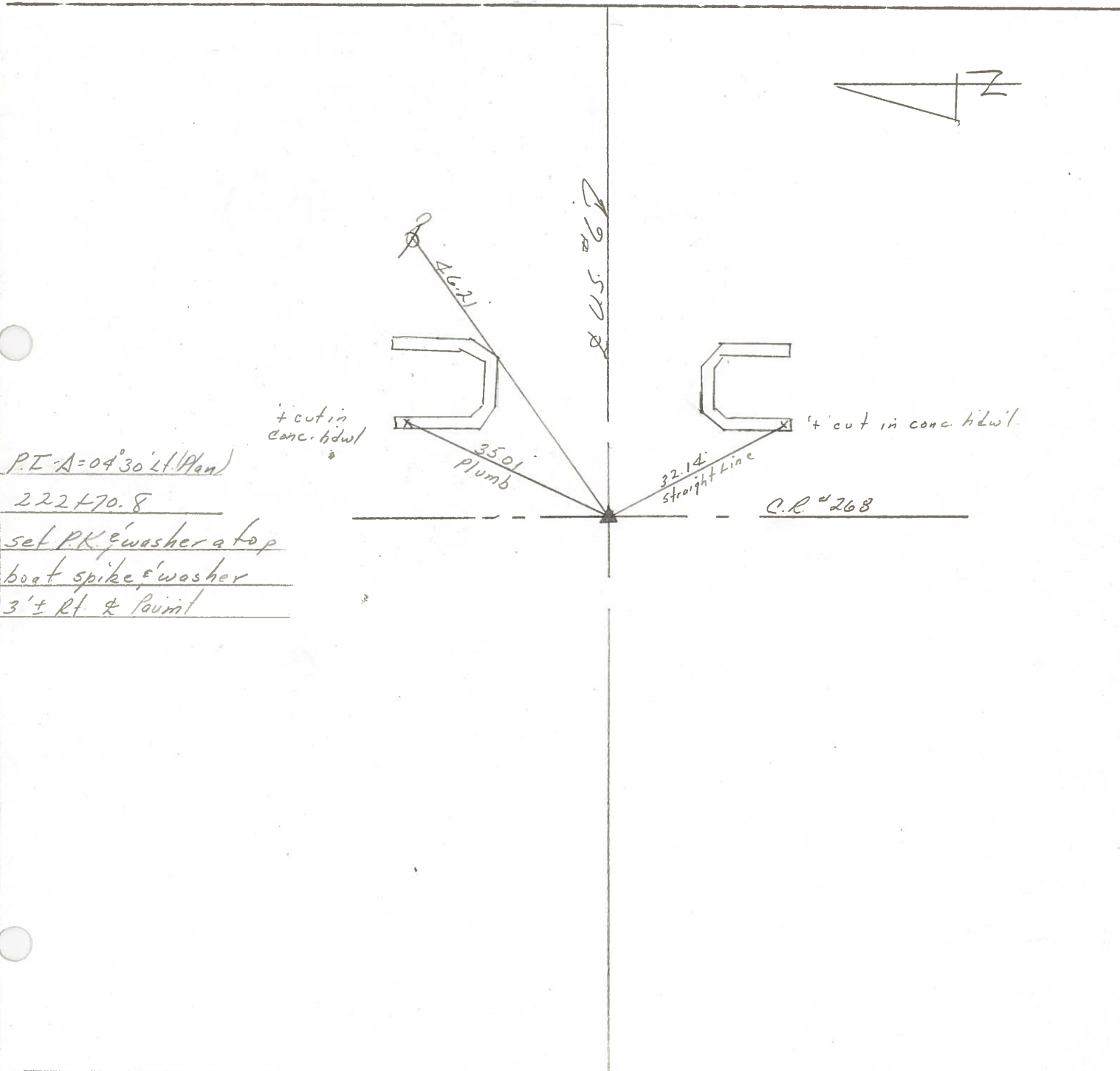
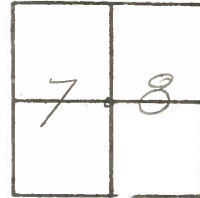
Personnel Cronin

Ripple

Geyman

Barbour

44



P.E. A = 04'30" Lt. (Plan)

222 + 70.8

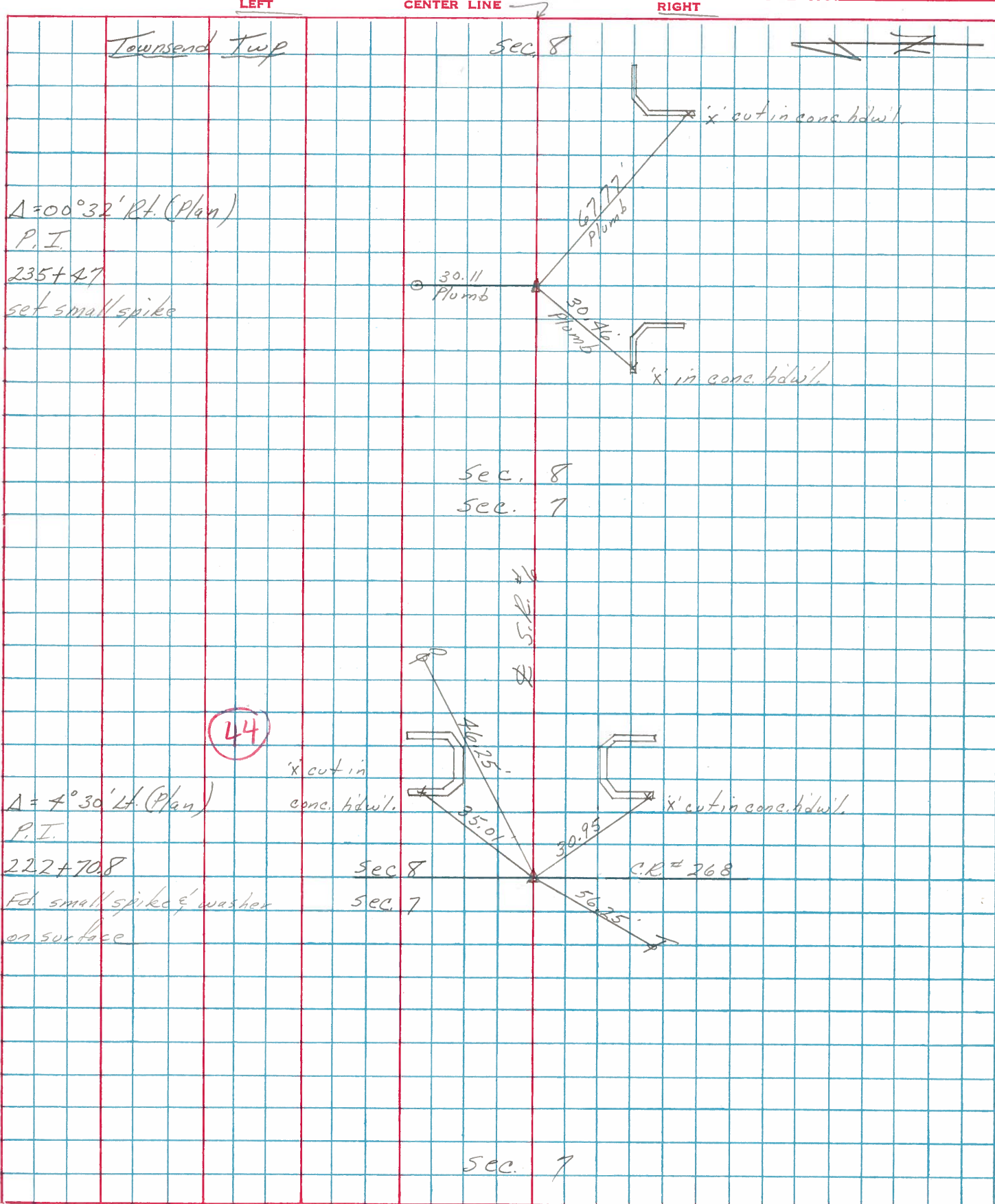
set P.K. & washer at top
boat spike & washer
3' ± Rt. & Point

PERSONNEL	TITLE	PERSONNEL	TITLE
Cronin		Schneider	
Ash		Mosser	
Geyman		Barbour	

COUNTY Sandusby DATE 7/31/75
 S. R. #6 WEATHER sunny
 SEC. K - Fremont - East TEMP. 83°

DESCRIPTION Ties for Control Points

JOB NO.



PERSONNEL	TITLE	PERSONNEL	TITLE	COUNTY	DATE
<u>Schneider</u>		<u>Potts</u>		<u>Sandusky</u>	<u>Dec-1967</u>
<u>Mosser</u>				S. R. <u>U.S. # 6</u>	WEATHER
<u>Barbour</u>				SEC. <u>Fremont-East</u>	TEMP.
<u>Redding</u>					

DESCRIPTION Ties for Control Points JOB NO. _____

