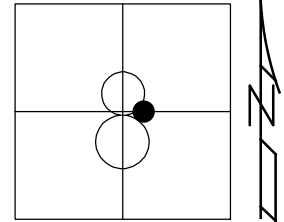


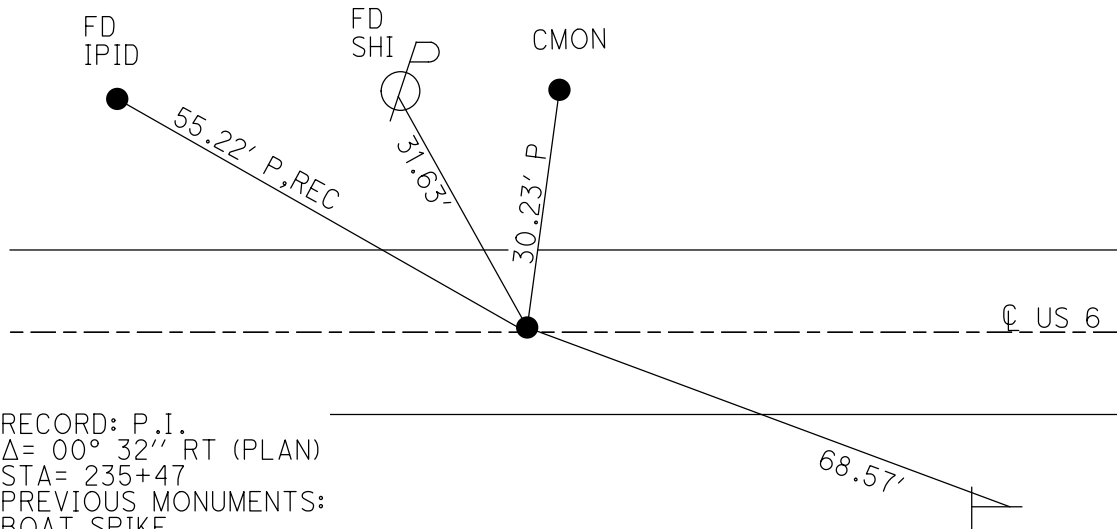
O.D.O.T. DISTRICT 2 SURVEY OFFICE (USE ONLY)

PERSONNEL \_\_\_\_\_ REFERENCE NO. 45 SHEET 20 OF 34  
 NOTES LEU DATE 8/6/18 ROUTE US 6  
 H.C. LEU WEATHER HOT COUNTY SANDUSKY  
 R.C. HAGEMeyer TEMP. 85° TOWNSHIP TOWNSEND  
 DWG BY AUBLE PID PAVETRAIN SECTION 8  
 T 5 N R 17 E

TYPE MONUMENT P.K./WASHER  
 ON SURFACE - ~~BELOW~~ ON  
 OFFSET  $\text{C}$  PAVEMENT 0.5' LT : ~~RT~~  
12' TO LT EDGE PAVEMENT  
 STATION: 1475+94



HORIZ.DATUM: NAD83 (2011) GEOID: 2012A  
 GRID: NORTHING: 634877.385 EASTING: 1850672.776



RECORD: P.I.  
 $\Delta = 00^\circ 32' RT$  (PLAN)  
 STA = 235+47  
 PREVIOUS MONUMENTS:  
 BOAT SPIKE  
 FD P.K./WASHER  
 3/16/02, DCH  
 SET P.K./WASHER  
 6/11/02, DCH  
 FD P.K./WASHER  
 SV2  
 6/11/09, SAH  
 9/14/12, SDC  
 FD P.K./WASHER  
 REF45  
 11/23/17, DCH  
 SET MAG/WASHER  
 8-2-19, JLL  
 FD MAG/WASHER  
 2/10/22, JFO  
 1/20/23, JMR

SET NOTCH  
 POST  
 28 MP

O.D.O.T. DISTRICT 2 SURVEY OFFICE (USE ONLY)

PERSONNEL

REFERENCE NO. 45

SHEET 20 OF 34

NOTES LEU

DATE 8/6/18

ROUTE US 6

H.C. LEU

WEATHER HOT

COUNTY SANDUSKY

R.C. HAGEMEYER

TEMP. 85°

TOWNSHIP TOWNSEND

DWG BY AUBLE

PID 95769

SECTION 8

T 5 N R 17 E

TYPE MONUMENT P.K./WASHER

ON SURFACE - ~~BELOW~~ ON

OFFSET 12' TO LT EDGE PAVEMENT

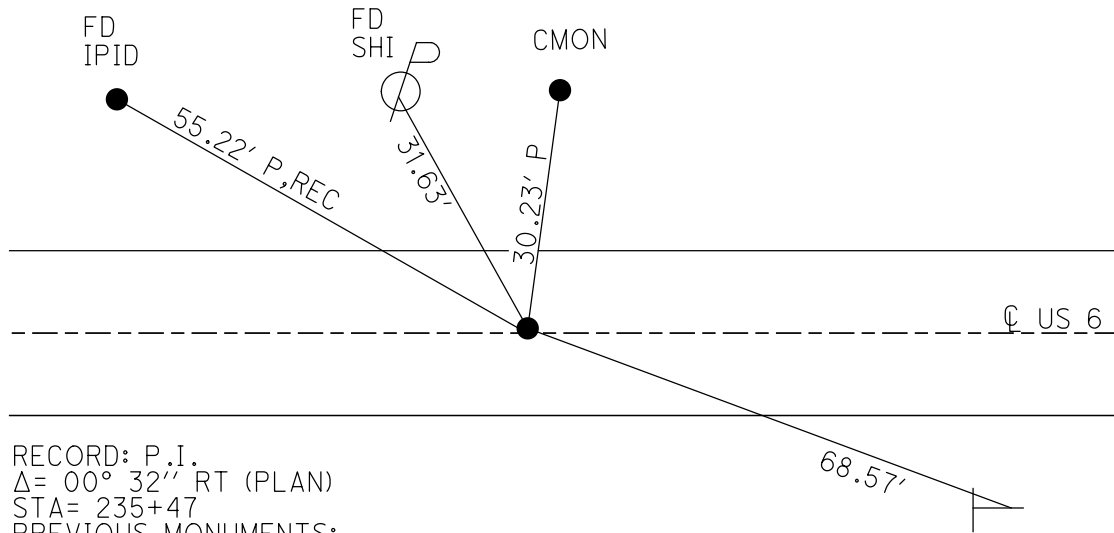
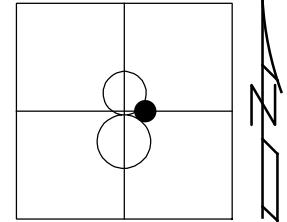
STATION: 1475+94

HORZ.DATUM: NAD83 (2011)

GEOID: 2012A

GRID: NORTHING: 634877.385

EASTING: 1850672.776



RECORD: P.I.  
 $\Delta = 00^\circ 32''$  RT (PLAN)  
 STA= 235+47  
 PREVIOUS MONUMENTS:  
 BOAT SPIKE  
 FD P.K./WASHER  
 3/16/02, DCH  
 SET P.K./WASHER  
 6/11/02, DCH  
 FD P.K./WASHER  
 SV2  
 6/11/09, SAH  
 9/14/12, SDC  
 FD P.K./WASHER  
 REF45  
 11/23/17, DCH  
 SET MAG/WASHER  
 8-2-19, JLL  
 FD MAG/WASHER  
 2/10/22, JFO

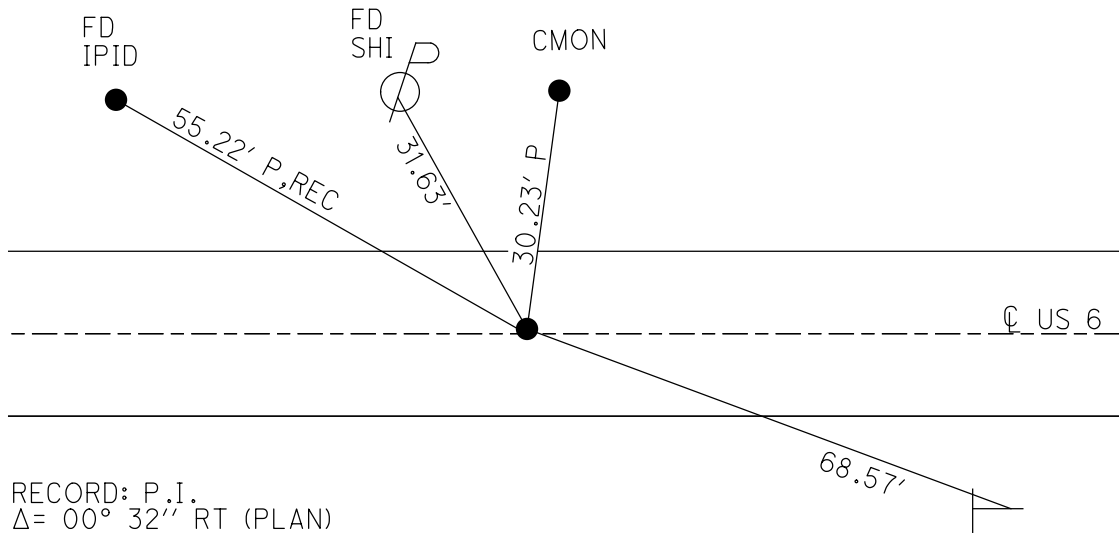
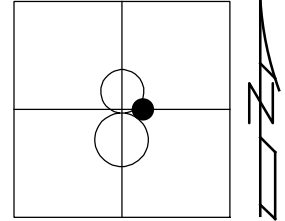
SET NOTCH  
 POST  
 28 MP

O.D.O.T. DISTRICT 2 SURVEY OFFICE (USE ONLY)

|                       |                         |                              |
|-----------------------|-------------------------|------------------------------|
| PERSONNEL             | REFERENCE NO. <u>45</u> | SHEET <u>20</u> OF <u>34</u> |
| NOTES <u>LEU</u>      | DATE <u>8/6/18</u>      | ROUTE <u>US 6</u>            |
| H.C. <u>LEU</u>       | WEATHER <u>HOT</u>      | COUNTY <u>SANDUSKY</u>       |
| R.C. <u>HAGEMEYER</u> | TEMP. <u>85°</u>        | TOWNSHIP <u>TOWNSEND</u>     |
| DWG BY <u>AUBLE</u>   | PID <u>95769</u>        | SECTION <u>8</u>             |
|                       |                         | T <u>5</u> N R <u>17</u> E   |

TYPE MONUMENT P.K./WASHER  
 ON SURFACE - ~~BELOW~~ ON  
 OFFSET  $\text{C}$  PAVEMENT 0.5' LT : ~~RT~~  
12' TO LT EDGE PAVEMENT  
 STATION: 1475+94

HORIZ.DATUM: NAD83 (2011) GEOID: 2012A  
 GRID: NORTHING: 634877.385 EASTING: 1850672.776



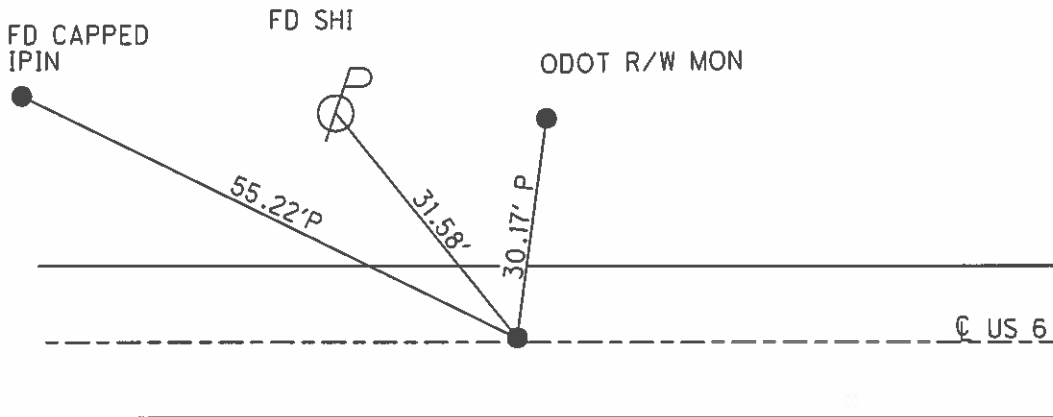
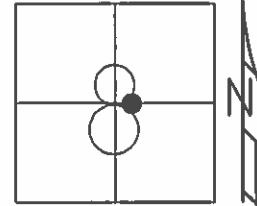
RECORD: P.I.  
 $\Delta = 00^\circ 32''$  RT (PLAN)  
 STA= 235+47  
 PREVIOUS MONUMENTS:  
 BOAT SPIKE  
 FD P.K./WASHER  
 3/16/02, DCH  
 SET P.K./WASHER  
 6/11/02, DCH  
 FD P.K./WASHER  
 SV2  
 6/11/09, SAH  
 9/14/12, SDC  
 FD P.K./WASHER  
 REF45  
 11/23/17, DCH  
 SET MAG/WASHER  
 8-2-19, JLL

SET NOTCH  
 POST  
 28 MP

O.D.O.T. DISTRICT 2 SURVEY OFFICE (USE ONLY)

PERSONNEL \_\_\_\_\_ REFERENCE NO. 45 SHEET 18 OF 31  
 NOTES RHOADES DATE 05/16/13 ROUTE US 6  
 H.C. CODER WEATHER SUNNY COUNTY SANDUSKY  
 R.C. RHOADES TEMP. 86° TOWNSHIP TOWNSEND  
 \_\_\_\_\_ SECTION 8  
 \_\_\_\_\_ T 5 N R 17 E

TYPE MONUMENT PK/WASHER  
 ON SURFACE - ~~BELOW~~ ON  
~~LEFT~~ - Q PAV'T - ~~RIGHT~~ ON  
12.4' TO LT EDGE PAVEMENT  
 S.L.M. 1478+47.87  
 GRID: NORTHING: 634877.365 EASTING: 1850672.644

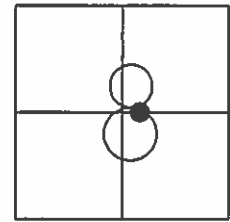


RECORD: P1  
 DELTA= 00° 32'' RT (PLAN)  
 STA= 235+47  
 PREVIOUS MONUMENTS,  
 BOAT SPIKE  
 SET PK/WASHER  
 6/11/02, DCH  
 FD PK/WASHER  
 6/11/09, GPS SV2, SAH  
 9/14/12, SDC

**O.D.O.T. DISTRICT 2 SURVEY OFFICE USE ONLY**

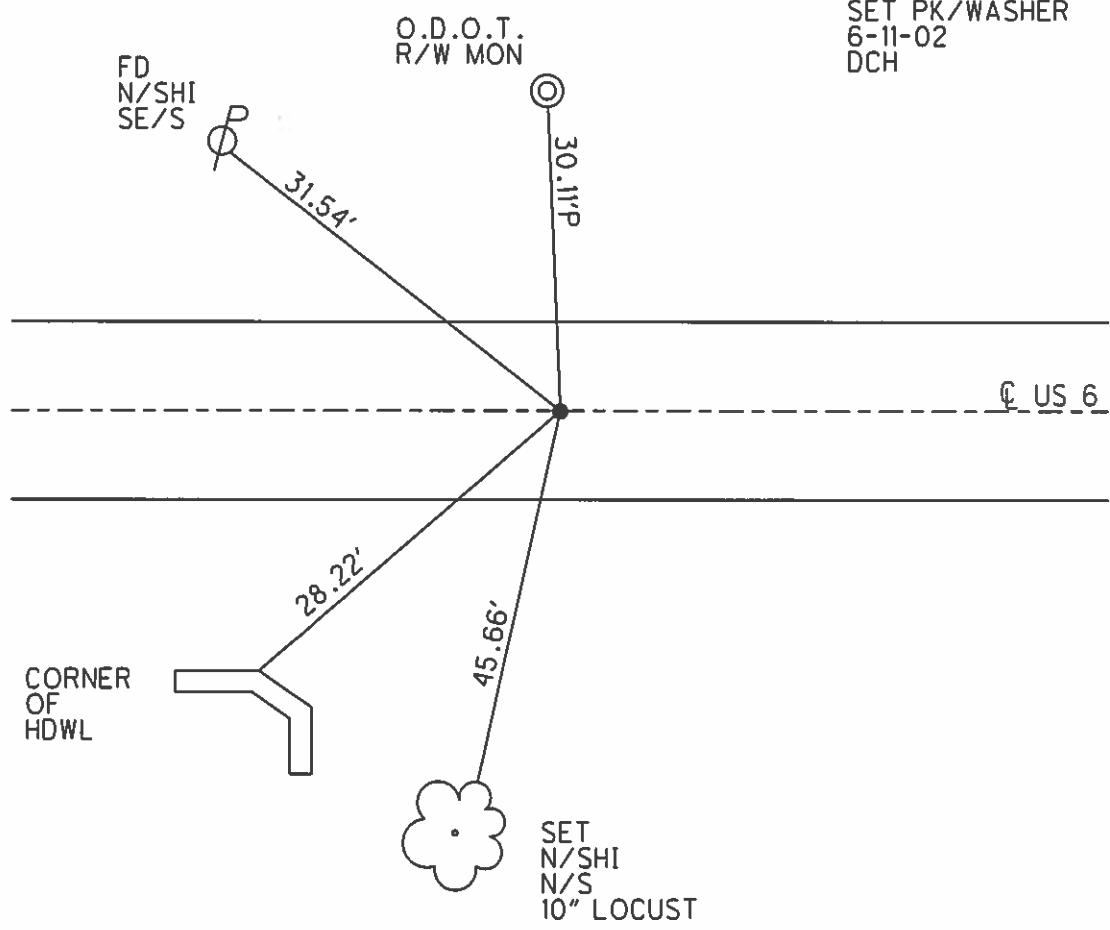
|           |               |         |         |          |          |    |
|-----------|---------------|---------|---------|----------|----------|----|
| PERSONNEL | REFERENCE NO. | 45      | SHEET   | 18       | OF       | 31 |
| NOTES     | ROUSOS        | DATE    | 3/16/02 | ROUTE    | US 6     |    |
| H.C.      | VAN DUSEN     | WEATHER | WINDY   | COUNTY   | SANDUSKY |    |
| R.C.      | MOSSER        | TEMP.   | 28°     | TOWNSHIP | TOWNSEND |    |
|           | HOMAN         |         |         | SECTION  | 7        |    |
|           |               |         |         | T. 5 N   | R. 17 E  |    |

TYPE MONUMENT PK/WASHER  
 ON SURFACE - BELOW ON  
~~LEFT - C PAV'T - RIGHT~~ ON  
12' TO LT EDGE PAVEMENT  
 S.L.M. 1475+94



P.I.  
 STA 235+47  
 DELTA=00°32'RT (PLAN)  
 PREVIOUS MONUMENTS  
 BOAT SPK

SET PK/WASHER  
 6-11-02  
 DCH



O.D.O.T. DISTRICT 2 SURVEY OFFICE

PERSONNEL \_\_\_\_\_

REFERENCE NO. \_\_\_\_\_

SHEET 27 OF 39

NOTES RIPPLE

H.C. BARBOUR

DATE 10-3-1991

ROUTE 6

R.C. GEYMAN

WEATHER —

COUNTY SANDUSKY

\_\_\_\_\_

TEMP. 74°

TOWNSHIP TOWNSEND

\_\_\_\_\_

SECTION 8

T S N R I E

TYPE MONUMENT PK/WASHER

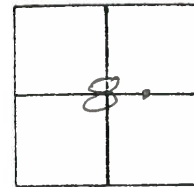
45

ON SURFACE - BELOW

LEFT - ☉ PAV'T. - RIGHT —

— TO — EDGE PAVEMENT

S.L.M. 1475+94



P.I.

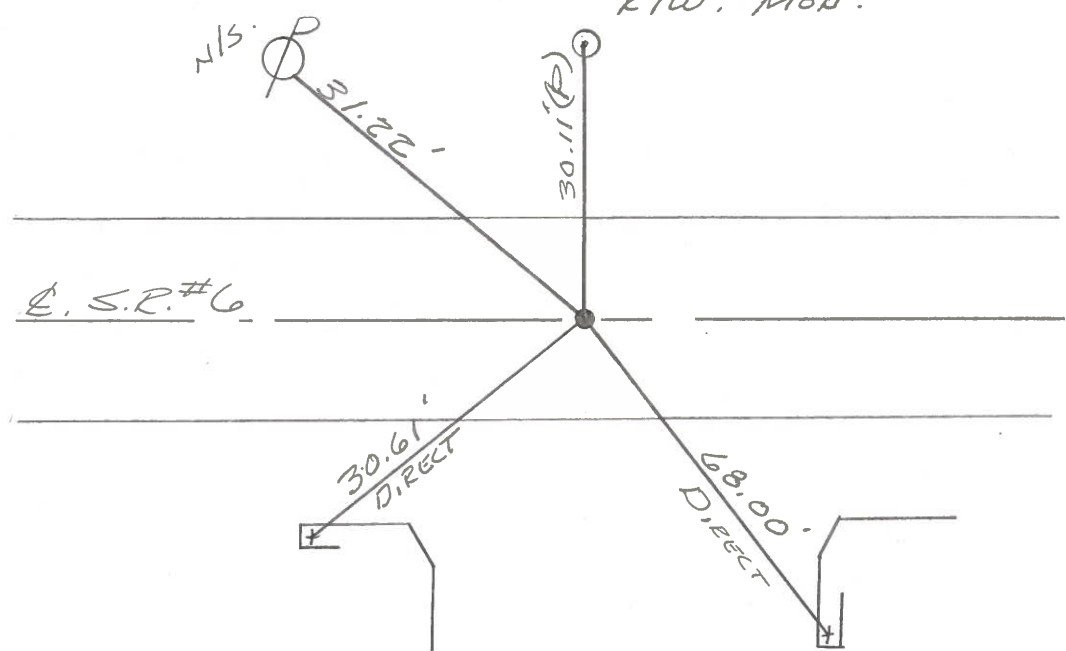
STA. 235+47

$\Delta = 00^\circ 32'$  RT. (PLAN)

PREVIOUS MONUMENTS

BOAT SPIK.

O.D.O.T.  
R/W. MON.



"t" CUTS IN CONC. HOWL'S.

Q.D.O.T. DISTRICT 2 SURVEY OFFICE

SHEET \_\_\_\_\_ OF \_\_\_\_\_

County Sandusky S.R. U.S. #6

Date 9/24/84

Township Townsend

Weather sunny

Section 8

Temp. 81°

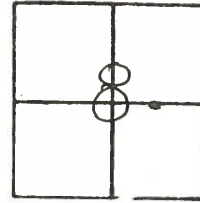
T5N, R17E

Personnel Cranin

Ripple

Geyman

Barbour



45

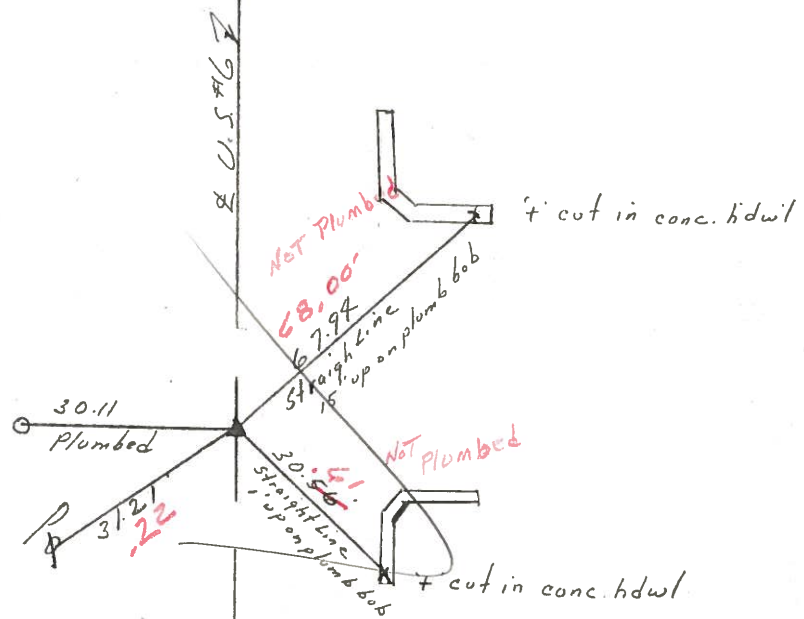
4/03/91  
40°

1475+94

P.I. Δ = 00°32' Rt (Plan)

235+47

Boat spike 2" below surface



10/03/91

RIPPLE Temp. 74°

BARBOUR

GEYMAN

SET P.K. NAIL & WASHER

Q.D.O.T. DISTRICT 2 SURVEY OFFICE

SHEET \_\_\_\_\_ OF \_\_\_\_\_

County Sandusky S. R. U.S. #6

Date 9/24/84

Township Townsend

Weather sunny

Section 8

Temp. 81°

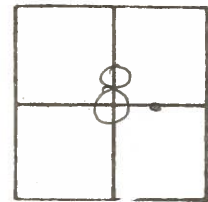
T5N, R17E

Personnel Cronin

Ripple

Geyman

Barbour



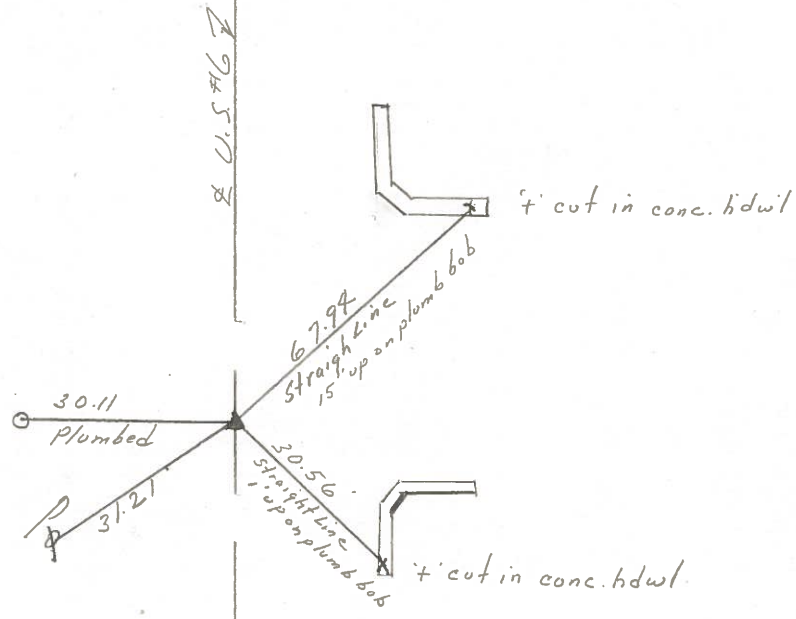
45



P.I.  $\Delta = 00^\circ 32' \text{ Rt. (Plan)}$

235+47

Boat spike 2" below surface





| PERSONNEL | TITLE | PERSONNEL | TITLE |
|-----------|-------|-----------|-------|
| Cronin    |       | Schneider |       |
| Ash       |       | Masser    |       |
| Geyman    |       | Barbour   |       |

COUNTY Sandusky DATE 7/31/75

S. R. #6 WEATHER sunny

SEC. K - Fremont - East TEMP. 83°

DESCRIPTION Ties for Control Points

JOB NO.

