

O.D.O.T. DISTRICT 2 SURVEY OFFICE (USE ONLY)

PERSONNEL

REFERENCE NO. 46

SHEET 21 OF 34

NOTES LEU

DATE 8/6/18

ROUTE US 6

H.C. LEU

WEATHER HOT

COUNTY SANDUSKY

R.C. HAGEMeyer

TEMP. 86°

TOWNSHIP TOWNSEND

SECTION 8

DWG BY AUBLE

PID PAVETRAIN

T 5 N R 17 E

TYPE MONUMENT P.K./WASHER

ON SURFACE - ~~BELOW~~ ON

OFFSET  $\text{C}$  PAVEMENT 15' ~~LT~~ : RT

3.5' TO RT EDGE PAVEMENT

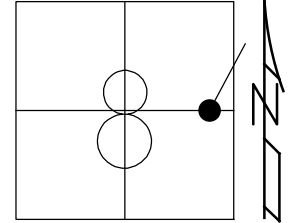
STATION: 1513+04.16

HORZ.DATUM: NAD83 (2011)

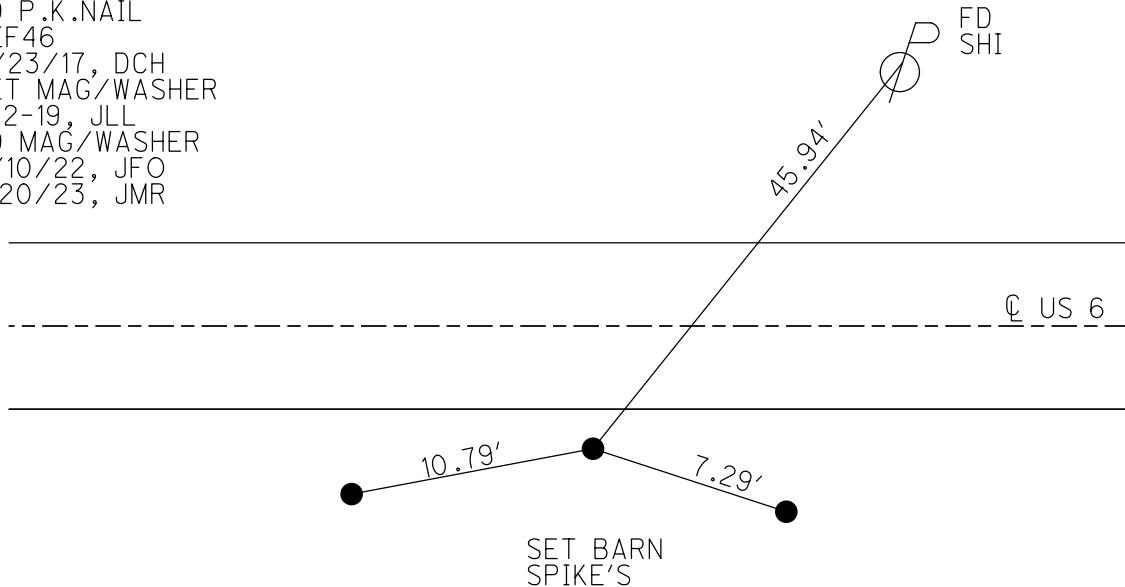
GEOID: 2012A

GRID: NORTHING: 634892.475

EASTING: 1854129.000



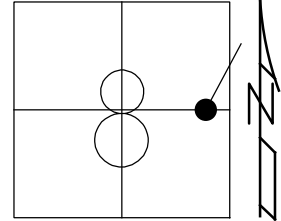
RECORD: P.I.  
 $\Delta = 23^\circ 15''$  LT (PLAN)  
 STA. 270+02.20  
 FD IPIN  
 4" DOWN  
 1.8' S OF RT EP  
 3/16/02, DCH  
 SET P.K./WASHER  
 6/11/02, DCH  
 FD P.K./WASHER  
 SV3  
 6/11/09, SAH  
 9/14/12, SDC  
 FD P.K.NAIL  
 REF46  
 11/23/17, DCH  
 SET MAG/WASHER  
 8-2-19, JLL  
 FD MAG/WASHER  
 2/10/22, JFO  
 1/20/23, JMR



O.D.O.T. DISTRICT 2 SURVEY OFFICE (USE ONLY)

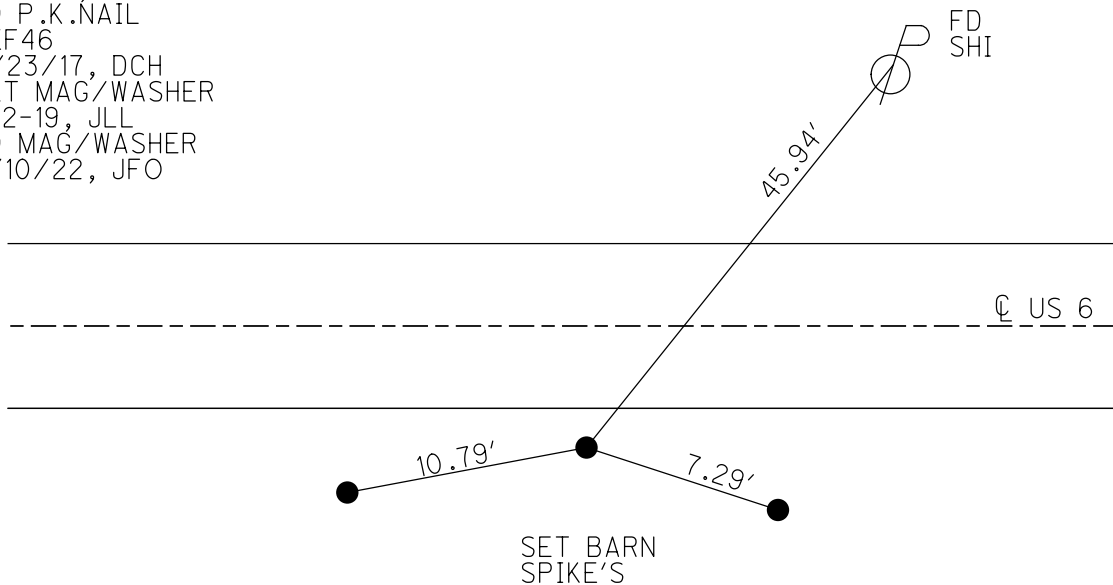
PERSONNEL	REFERENCE NO. <u>46</u>	SHEET <u>21</u> OF <u>34</u>
NOTES <u>LEU</u>	DATE <u>8/6/18</u>	ROUTE <u>US 6</u>
H.C. <u>LEU</u>	WEATHER <u>HOT</u>	COUNTY <u>SANDUSKY</u>
R.C. <u>HAGEMEYER</u>	TEMP. <u>86°</u>	TOWNSHIP <u>TOWNSEND</u>
DWG BY <u>AUBLE</u>	PID <u>95769</u>	SECTION <u>8</u>
		T <u>5</u> N R <u>17</u> E

TYPE MONUMENT P.K./WASHER  
 ON SURFACE - ~~BELOW~~ ON  
 OFFSET  $\text{C}$  PAVEMENT 15' ~~LT~~ : RT  
3.5' TO RT EDGE PAVEMENT  
 STATION: 1513+04.16



HORZ.DATUM: NAD83 (2011) GEOID: 2012A  
 GRID: NORTHING: 634892.475 EASTING: 1854129.000

RECORD: P.I.  
 $\Delta = 23^\circ 15''$  LT (PLAN)  
 STA. 270+02.20  
 FD IPIN  
 4" DOWN  
 1.8' S OF RT EP  
 3/16/02, DCH  
 SET P.K./WASHER  
 6/11/02, DCH  
 FD P.K./WASHER  
 SV3  
 6/11/09, SAH  
 9/14/12, SDC  
 FD P.K.NAIL  
 REF46  
 11/23/17, DCH  
 SET MAG/WASHER  
 8-2-19, JLL  
 FD MAG/WASHER  
 2/10/22, JFO



O.D.O.T. DISTRICT 2 SURVEY OFFICE (USE ONLY)

PERSONNEL

REFERENCE NO. 46

SHEET 21 OF 34

NOTES LEU

DATE 8/6/18

ROUTE US 6

H.C. LEU

WEATHER HOT

COUNTY SANDUSKY

R.C. HAGEMeyer

TEMP. 86°

TOWNSHIP TOWNSEND

SECTION 8

DWG BY AUBLE

PID 95769

T 5 N R 17 E

TYPE MONUMENT P.K./WASHER

ON SURFACE - ~~BELOW~~ ON

OFFSET CL PAVEMENT 15' ~~LT~~ : RT

3.5' TO RT EDGE PAVEMENT

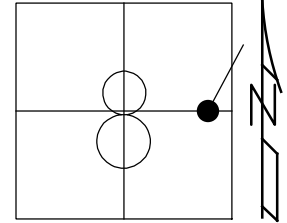
STATION: 1513+04.16

HORZ.DATUM: NAD83 (2011)

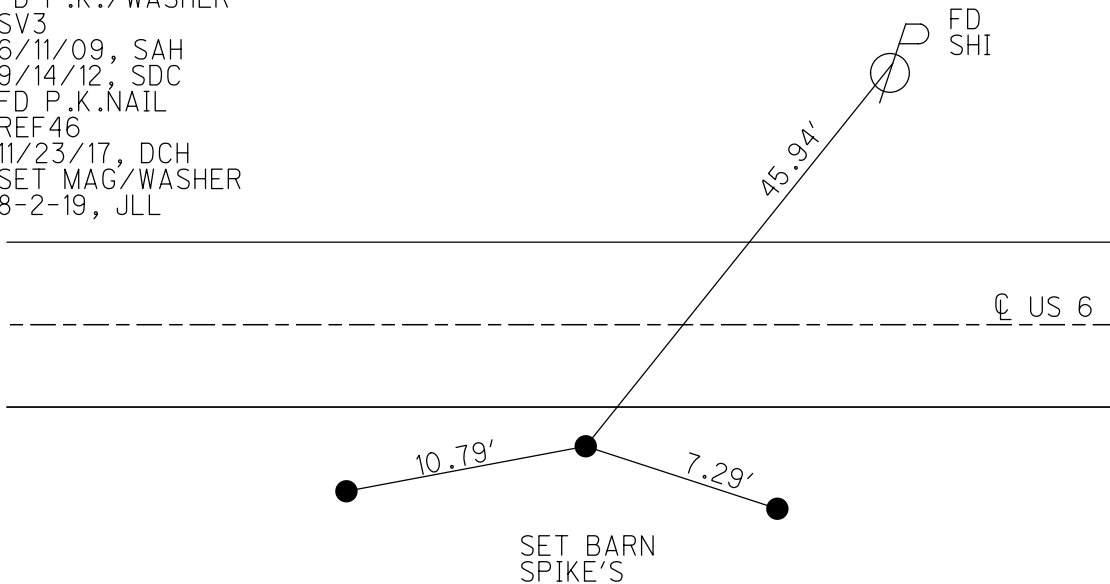
GEOID: 2012A

GRID: NORTHING: 634892.475

EASTING: 1854129.000



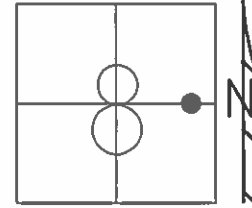
RECORD: P.I.  
 $\Delta = 23^\circ 15''$  LT (PLAN)  
 STA. 270+02.20  
 FD IPIN  
 4" DOWN  
 1.8' S OF RT EP  
 3/16/02, DCH  
 SET P.K./WASHER  
 6/11/02, DCH  
 FD P.K./WASHER  
 SV3  
 6/11/09, SAH  
 9/14/12, SDC  
 FD P.K.NAIL  
 REF46  
 11/23/17, DCH  
 SET MAG/WASHER  
 8-2-19, JLL



O.D.O.T. DISTRICT 2 SURVEY OFFICE (USE ONLY)

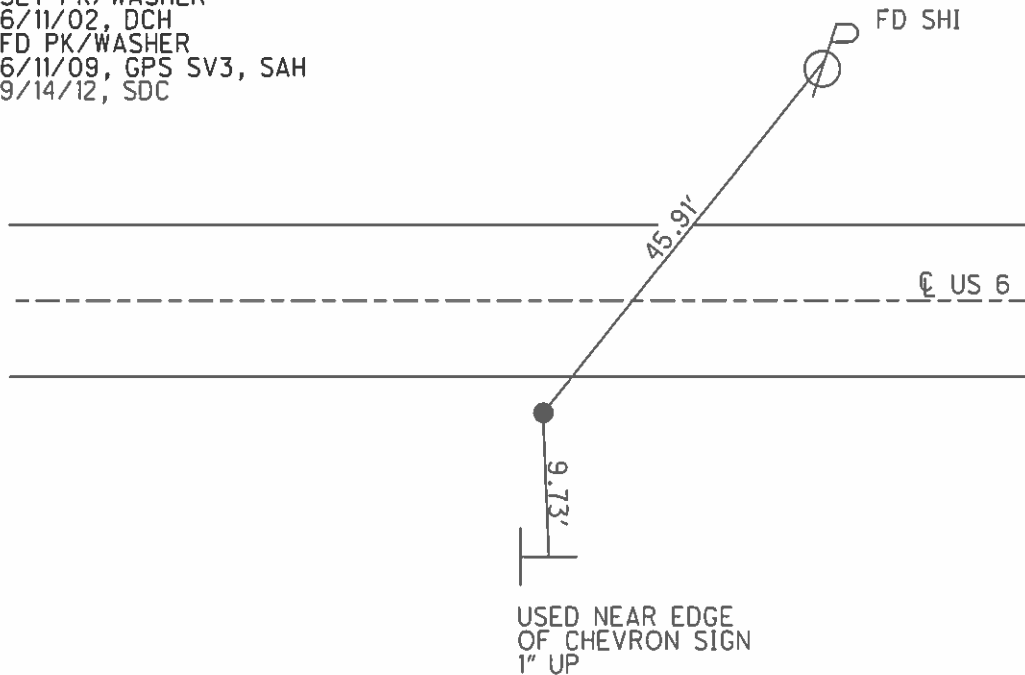
PERSONNEL	REFERENCE NO.	<u>46</u>	SHEET	<u>19</u>	OF	<u>31</u>
NOTES	<u>RHOADES</u>	DATE	<u>05/16/13</u>	ROUTE	<u>SR 20</u>	
H.C.	<u>CODER</u>	WEATHER	<u>SUNNY</u>	COUNTY	<u>SANDUSKY</u>	
R.C.	<u>RHOADES</u>	TEMP.	<u>86°</u>	TOWNSHIP	<u>TOWNSEND</u>	
				SECTION	<u>8</u>	
				T	<u>5</u>	N
				R	<u>17</u>	E

TYPE MONUMENT PK/WASHER  
 ON SURFACE - ~~BELOW~~ ON  
~~LEFT~~ - Q PAV'T - RIGHT 15.5'  
3.5' TO RT EDGE PAVEMENT  
 S.L.M. 1513+04.16



GRID: NORTHING: 634892.498 EASTING: 1854128.894

RECORD: PI  
 DELTA= 23° 15'' LT (PLAN)  
 STA= 270+02.20  
 IRON ROD 1.8' S OF S EP  
 BELOW STAB BERM  
 SET PK/WASHER  
 6/11/02, DCH  
 FD PK/WASHER  
 6/11/09, GPS SV3, SAH  
 9/14/12, SDC



**O.D.O.T. DISTRICT 2 SURVEY OFFICE USE ONLY**

PERSONNEL \_\_\_\_\_ REFERENCE NO. 46 SHEET 19 OF 31

NOTES ROUSOS DATE 3/16/02 ROUTE US 6

H.C. VAN DUSEN WEATHER WINDY COUNTY SANDUSKY

R.C. MOSSER TEMP. 28° TOWNSHIP TOWNSEND

\_\_\_\_\_ SECTION 8

T 5 N R 17 E

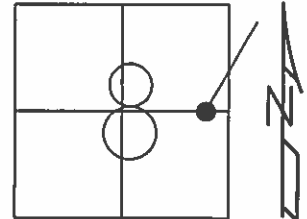
TYPE MONUMENT IPIN

~~ON SURFACE~~ - BELOW 4"

~~LEFT~~ - ☉ PAV'T - RIGHT 15.5'

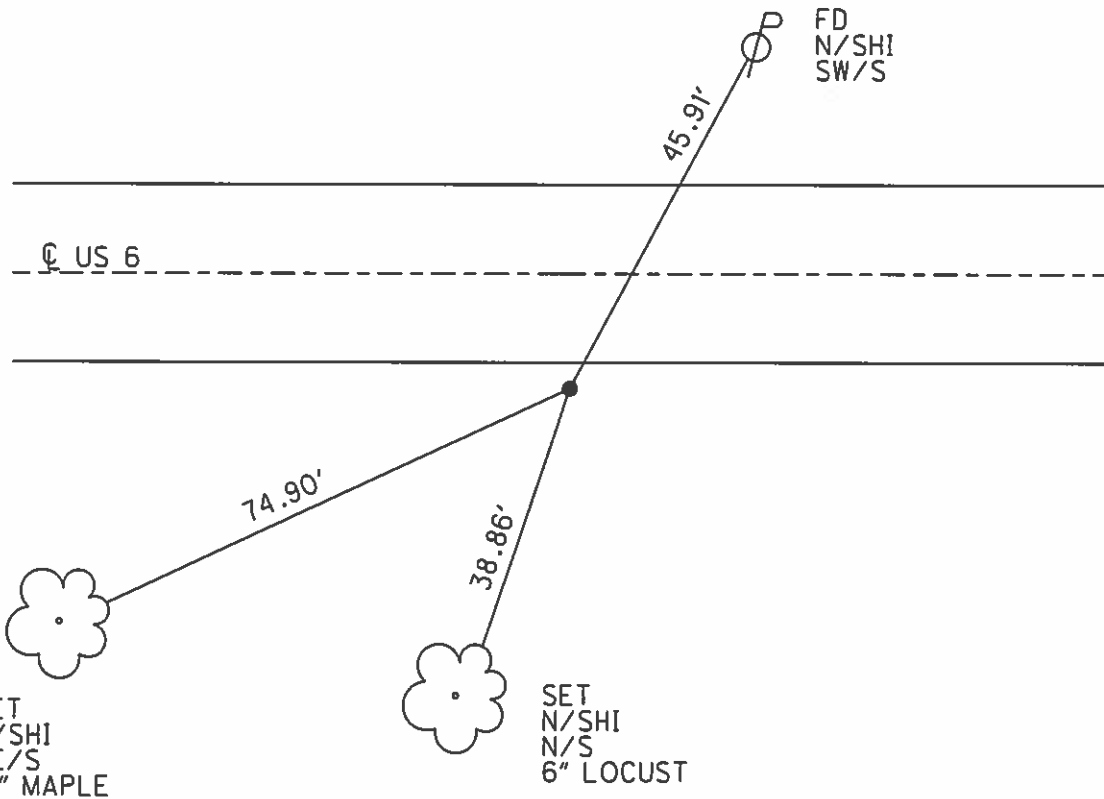
3.5' TO RT EDGE PAVEMENT

S.L.M. 1510+49



P.I.  
 DELTA=23°15'LT (PLAN)  
 STA 270+02.20  
 IRON ROD 1.8' S OF S EP  
 BELOW STAB BERM

SET PK/WASHER  
 6-11-02  
 DCH



O.D.O.T. DISTRICT 2 SURVEY OFFICE

PERSONNEL \_\_\_\_\_

REFERENCE NO. \_\_\_\_\_

SHEET 28 OF 39

NOTES RIPPLE

H.C. BARBOUR

R.C. GEYMAN

DATE 10-3-1991

WEATHER —

TEMP. 74°

ROUTE 6

COUNTY SANDUSKY

TOWNSHIP TOWNSEND

SECTION 8

T S N R 17 E

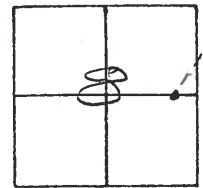
TYPE MONUMENT R.R. SPK.

ON SURFACE - BELOW —

~~LEFT~~ - & PAV'T. - RIGHT —

3.5' N TO S. EDGE PAVEMENT

S.L.M. 1510+49



P.I.

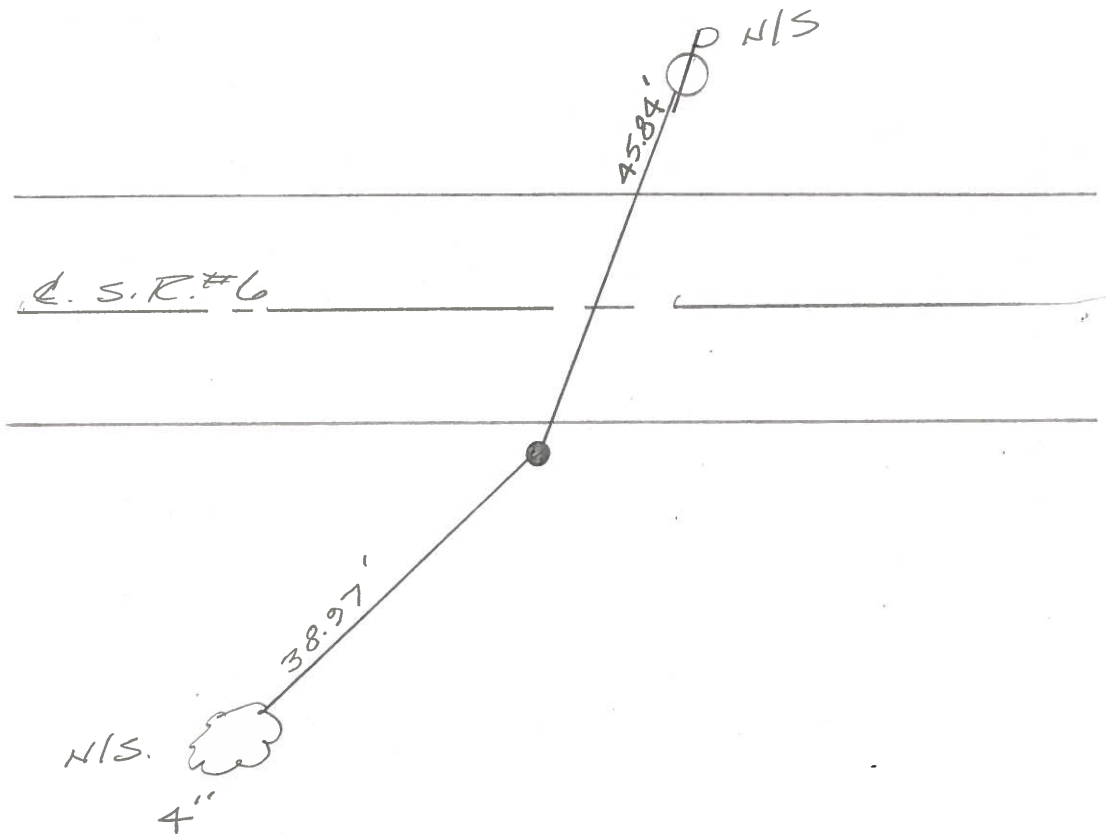
$\Delta = 23^{\circ}15'$  LT. (PLAN)

STA. 270+02.20

IRON ROD 1.8' S. OF S.E./P.

BELOW STAB. BERM

46



Q.D.O.T. DISTRICT 2 SURVEY OFFICE

SHEET \_\_\_\_\_ OF \_\_\_\_\_

County Sandusky S.R. U.S. #6

Date 9/24/84

Township Townsend

Weather sunny

Section 8

Temp. 82°

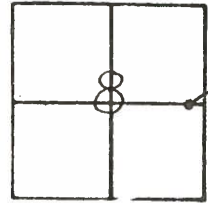
T5N, R17E

Personnel Cronin

Ripple

Geyman

Barbour



46

4/03/91  
40°

1510+49

P.T. A = 23°15' Lt. (Plan)

270.0220

RR Spk. I. Rd. 1.8' S of Rt E.P.

below stab. berm

3 1/2' RT of E.P.

45.80' .84

other ties are gone

38.97'

4" TR

10/03/91

RIPPLE

BARBOUR

GEYMAN

R/R spike in berm

U.S. #6

Q.D.O.T. DISTRICT 2 SURVEY OFFICE

SHEET \_\_\_\_\_ OF \_\_\_\_\_

County Sandusky S.R. U.S.#6

Date 9/24/84

Township Townsend

Weather sunny

Section 8

Temp. 82°

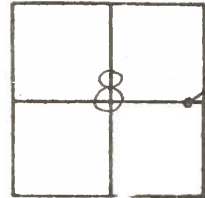
T5N, R1E

Personnel Cronin

Ripple

Geyman

Barbour



46

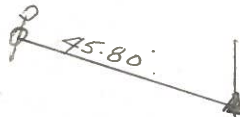
U.S.#6

P.L. Δ = 23°15' Lt. (Plan)

270.0220

I. Rod 1.8' of Rt. E.P.

below stab. berm



other ties are gone



PERSONNEL	TITLE	PERSONNEL	TITLE
Cronin		Schneider	
Ash		Mosser	
Ripple		Barbour	
Geyman			

COUNTY Sandusky

S. R. # 6

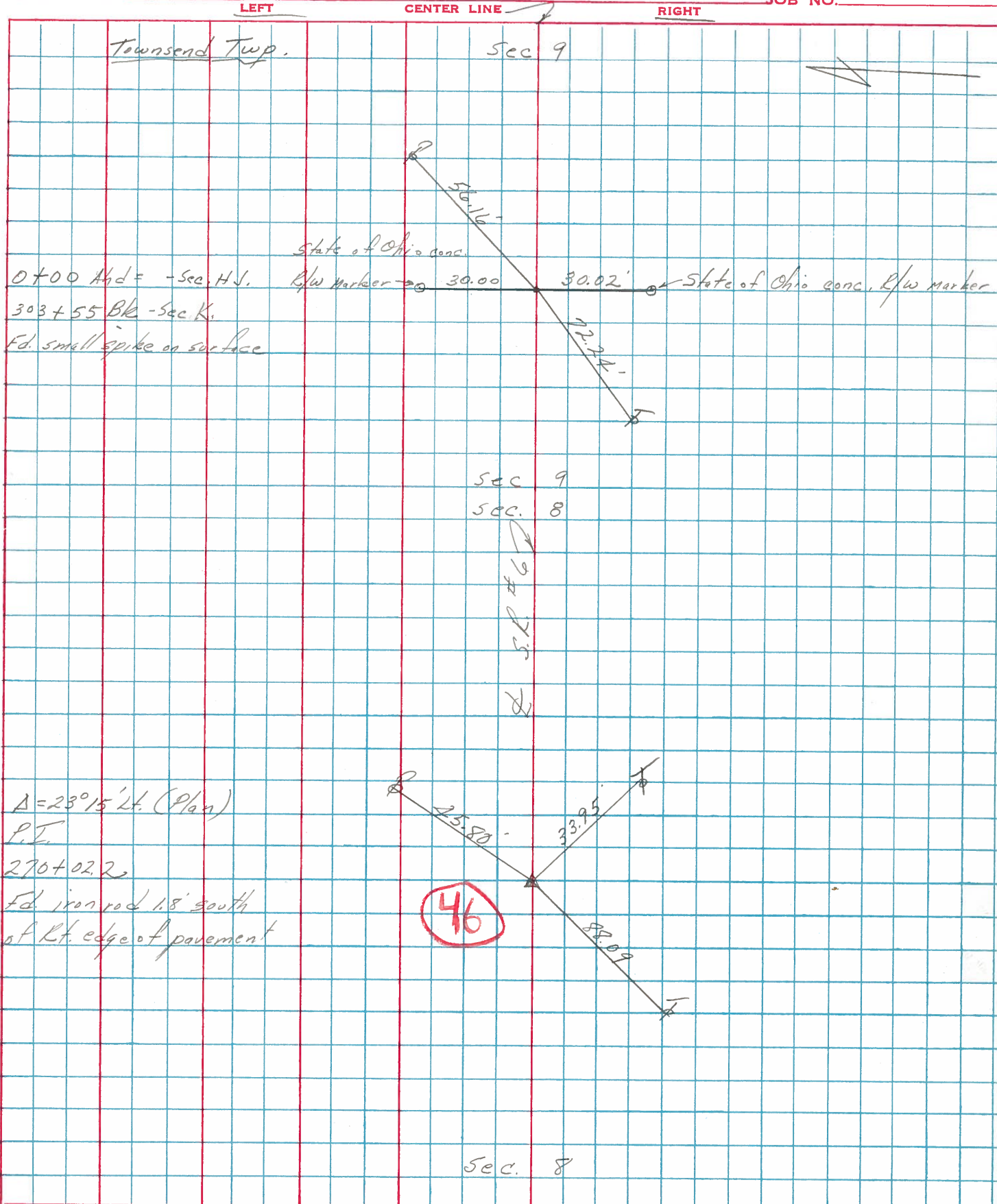
WEATHER sunny

SEC. K-H-J-Fremont-East

TEMP. 75°

DESCRIPTION Ties for Control Points

JOB NO.



PERSONNEL	TITLE	PERSONNEL	TITLE	COUNTY	<u>Sandusky</u>	DATE	<u>Dec-1962</u>
<u>Schneider</u>		<u>Potts</u>		S. R.	<u>U. S. # 6</u>	WEATHER	
<u>Mosser</u>				SEC.	<u>Framont-East</u>	TEMP.	
<u>Barbour</u>				DESCRIPTION	<u>Ties for control points</u>		JOB NO.
<u>Redding</u>							

