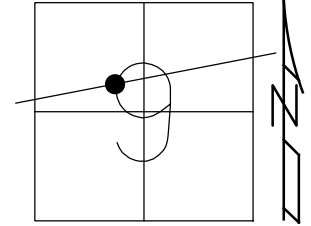


O.D.O.T. DISTRICT 2 SURVEY OFFICE (USE ONLY)

PERSONNEL	REFERENCE NO. <u>47</u>	SHEET <u>22</u> OF <u>34</u>
NOTES <u>MILLER</u>	DATE <u>12/28/23</u>	ROUTE <u>US 6</u>
H.C. <u>RHOADES</u>	WEATHER <u>RAIN</u>	COUNTY <u>SANDUSKY</u>
R.C. <u>MILLER</u>	TEMP. <u>44°</u>	TOWNSHIP <u>TOWNSEND</u>
DWG BY <u>RHOADES</u>	PID <u>PAVETRAIN</u>	SECTION <u>9</u>
		T <u>5</u> N R <u>17</u> E

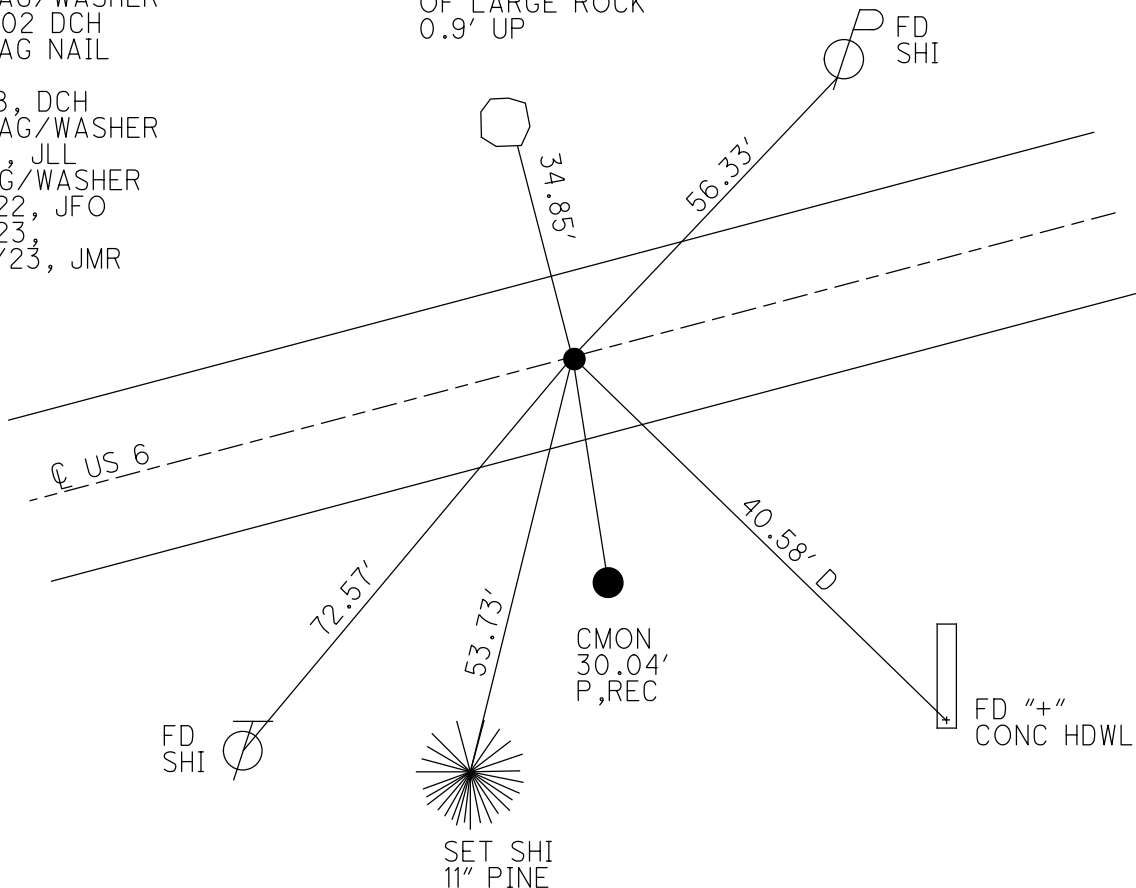
TYPE MONUMENT MAG/WASHER
 ON SURFACE - ~~BELOW~~ ON
 OFFSET 13' TO LT EDGE PAVEMENT
 STATION: 1544+09



HORZ. DATUM: NAD83 (2011) GEOID: NAVD88 2018
 GRID: NORTHING: 636229.459 EASTING: 1857209.283

RECORD:
 R.R. SPIKE
 P.K./WASHER
 FD P.K./WASHER
 3/16/02, DCH
 SET MAG/WASHER
 9/26/02 DCH
 SET MAG NAIL
 REF47
 8/6/18, DCH
 SET MAG/WASHER
 8-2-19, JLL
 FD MAG/WASHER
 2/10/22, JFO
 1/20/23,
 12/28/23, JMR

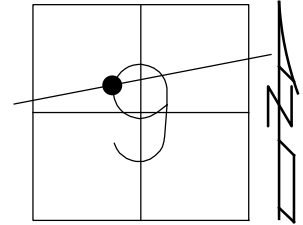
MOST SOUTHERLY
 POINT ON S/FACE
 OF LARGE ROCK
 0.9' UP



O.D.O.T. DISTRICT 2 SURVEY OFFICE (USE ONLY)

PERSONNEL	REFERENCE NO. <u>47</u>	SHEET <u>22</u> OF <u>34</u>
NOTES <u>LEU</u>	DATE <u>8/6/18</u>	ROUTE <u>US 6</u>
H.C. <u>LEU</u>	WEATHER <u>HOT</u>	COUNTY <u>SANDUSKY</u>
R.C. <u>HAGEMeyer</u>	TEMP. <u>89°</u>	TOWNSHIP <u>TOWNSEND</u>
DWG BY <u>AUBLE</u>	PID <u>95769</u>	SECTION <u>9</u>
		T <u>5</u> N R <u>17</u> E

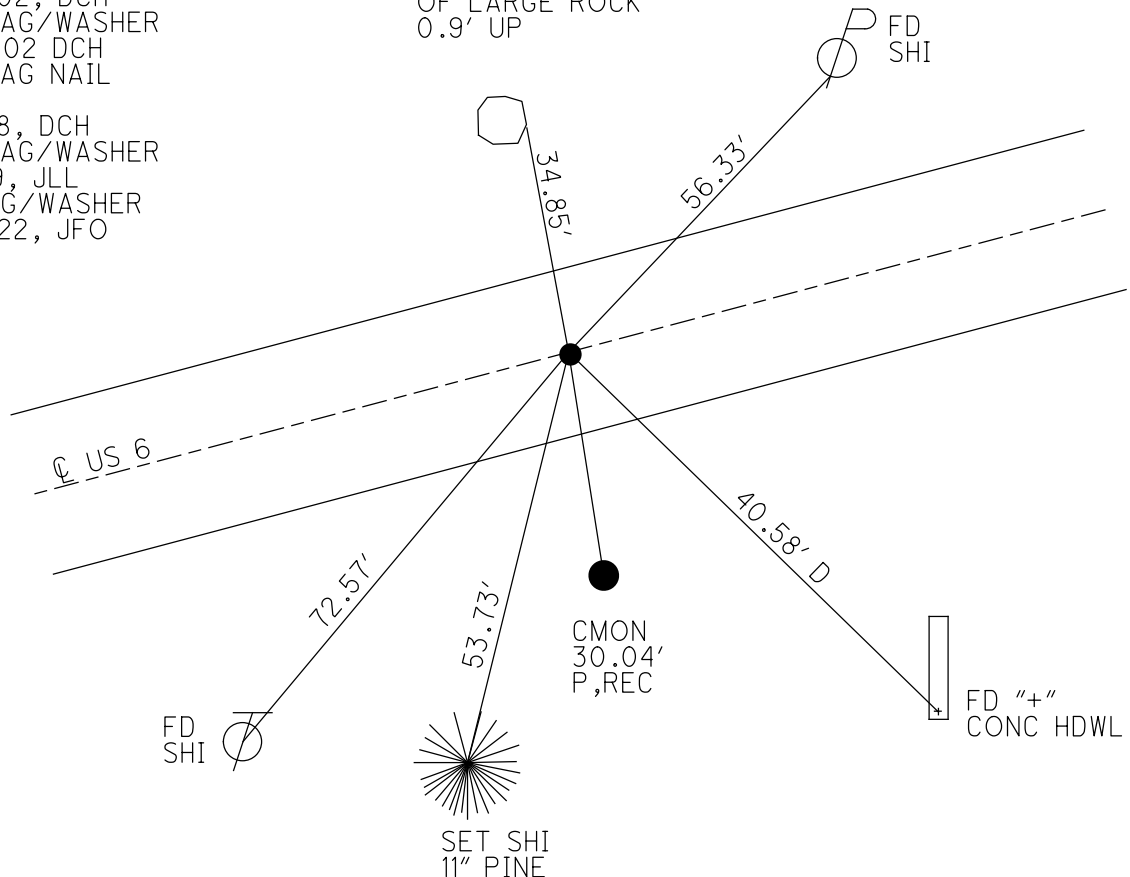
TYPE MONUMENT MAG NAIL
 ON SURFACE - ~~BELOW~~ ON
 OFFSET \odot PAVEMENT 0.2' ~~LT~~ : RT
13' TO LT EDGE PAVEMENT
 STATION: 1544+09



HORZ.DATUM: NAD83 (2011) GEOID: 2012A
 GRID: NORTHING: 636229.459 EASTING: 1857209.283

RECORD:
 PREVIOUS MONUMENTS:
 R.R.SPIKE
 P.K./WASHER
 FD P.K./WASHER
 3/16/02, DCH
 SET MAG/WASHER
 9/26/02 DCH
 SET MAG NAIL
 REF47
 8/6/18, DCH
 SET MAG/WASHER
 8-2-19, JLL
 FD MAG/WASHER
 2/10/22, JFO

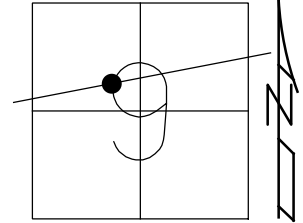
MOST SOUTHERLY
 POINT ON S/FACE
 OF LARGE ROCK
 0.9' UP



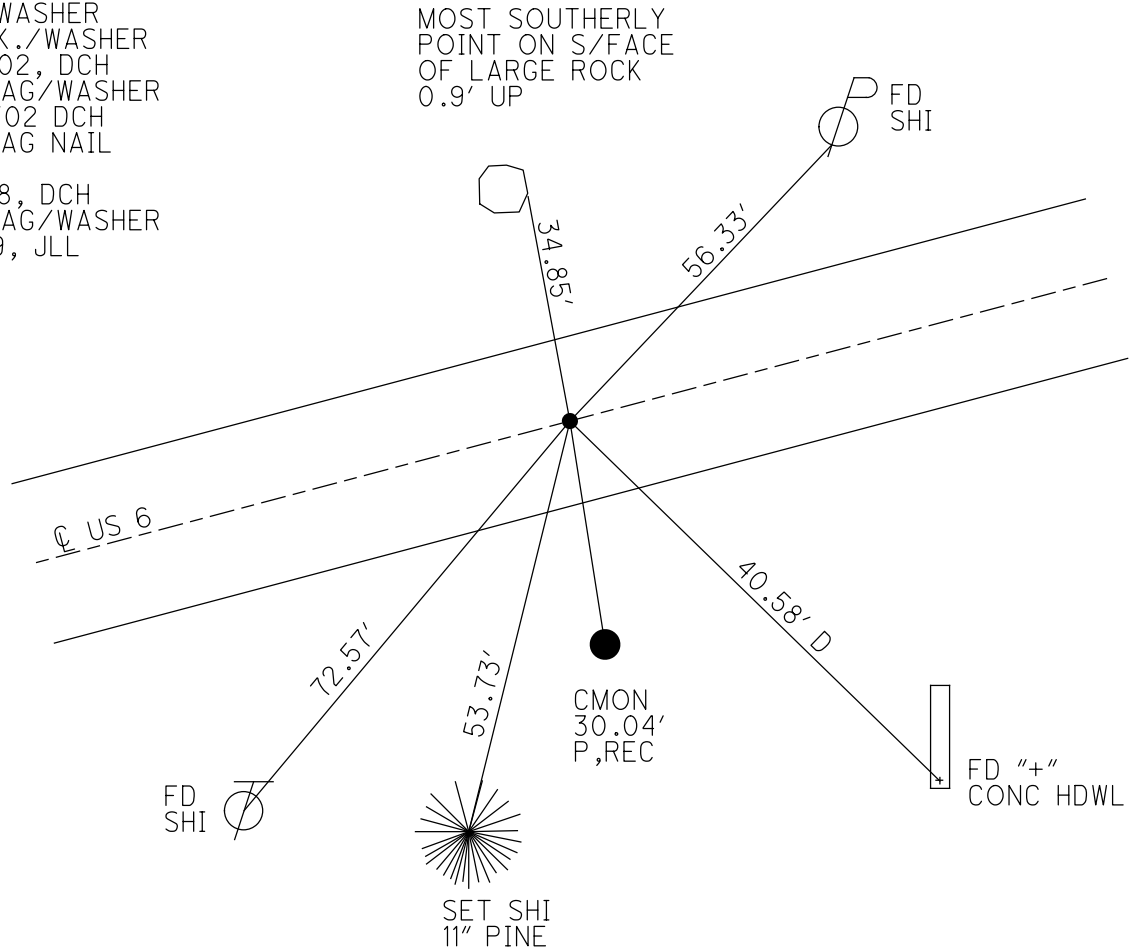
O.D.O.T. DISTRICT 2 SURVEY OFFICE (USE ONLY)

PERSONNEL	REFERENCE NO. <u>47</u>	SHEET <u>22</u> OF <u>34</u>
NOTES <u>LEU</u>	DATE <u>8/6/18</u>	ROUTE <u>US 6</u>
H.C. <u>LEU</u>	WEATHER <u>HOT</u>	COUNTY <u>SANDUSKY</u>
R.C. <u>HAGEMeyer</u>	TEMP. <u>89°</u>	TOWNSHIP <u>TOWNSEND</u>
DWG BY <u>AUBLE</u>	PID <u>95769</u>	SECTION <u>9</u>
		T <u>5</u> N R <u>17</u> E

TYPE MONUMENT MAG NAIL
 ON SURFACE - ~~BELOW~~ ON
 OFFSET \odot PAVEMENT 0.2' LT : RT
13' TO LT EDGE PAVEMENT
 STATION: 1544+09
 HORZ.DATUM: NAD83 (2011) GEOID: 2012A
 GRID: NORTHING: 636229.459 EASTING: 1857209.283



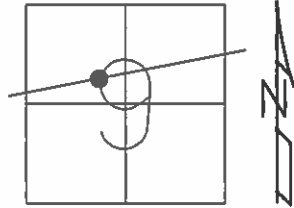
RECORD:
 PREVIOUS MONUMENTS:
 R.R.SPIKE
 P.K./WASHER
 FD P.K./WASHER
 3/16/02, DCH
 SET MAG/WASHER
 9/26/02 DCH
 SET MAG NAIL
 REF47
 8/6/18, DCH
 SET MAG/WASHER
 8-2-19, JLL



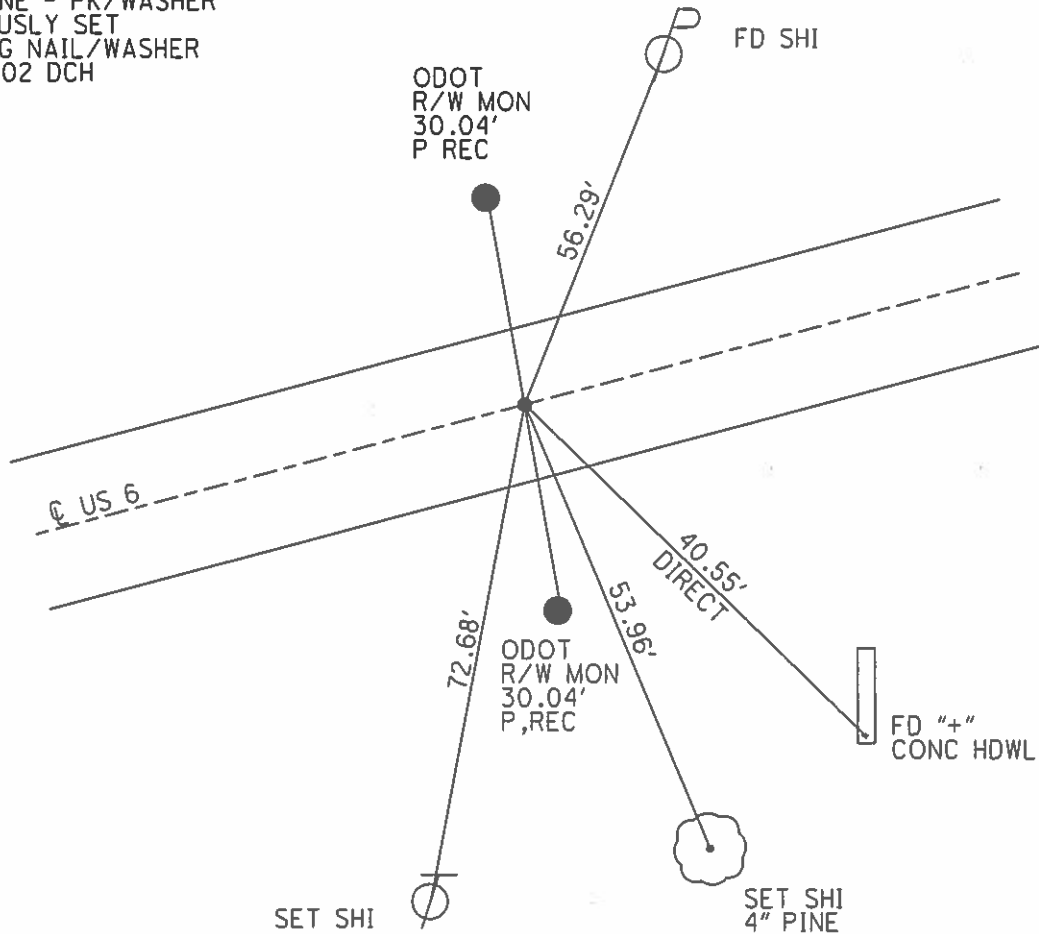
O.D.O.T. DISTRICT 2 SURVEY OFFICE (USE ONLY)

PERSONNEL	REFERENCE NO.	47	SHEET	20	OF	31
NOTES	ROUSOS	DATE	03/16/02	ROUTE	US 6	
H.C.	VAN DUSEN	WEATHER	WINDY	COUNTY	SANDUSKY	
R.C.	MOSSER	TEMP.	28°	TOWNSHIP	TOWNSEND	
	HOMAN			SECTION	9	
				T. 5 N	R. 17 E	

TYPE MONUMENT PK/WASHER
 ON SURFACE - ~~BELOW~~ ON
~~LEFT~~ - Q PAV'T - RIGHT 1'
13' TO LT. EDGE PAVEMENT
 S.L.M. 1544+09
 GRID: NORTHING: - EASTING: -



RECORD:
 0+00 AHEAD = SEC HJ
 303+55 BACK = SEC K
 SPK GONE - PK/WASHER
 PREVIOUSLY SET
 SET MAG NAIL/WASHER
 09/26/02 DCH



O.D.O.T. DISTRICT 2 SURVEY OFFICE

PERSONNEL _____

REFERENCE NO. _____

SHEET 29 OF 39

NOTES RIPPLE

H.C. BARBOWP

R.C. GEYMAN

DATE 10-3-1991

WEATHER —

TEMP. 75°

ROUTE 6

COUNTY SANDUSKY

TOWNSHIP TOWNSEND

SECTION 9

T5N R17E

TYPE MONUMENT PK/WASHER

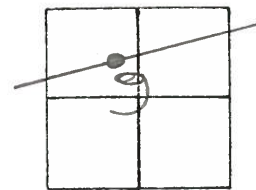
ON SURFACE - BELOW

LEFT - ☉ PAV'T. - RIGHT —

— TO — EDGE PAVEMENT

S.L.M. 1544+09

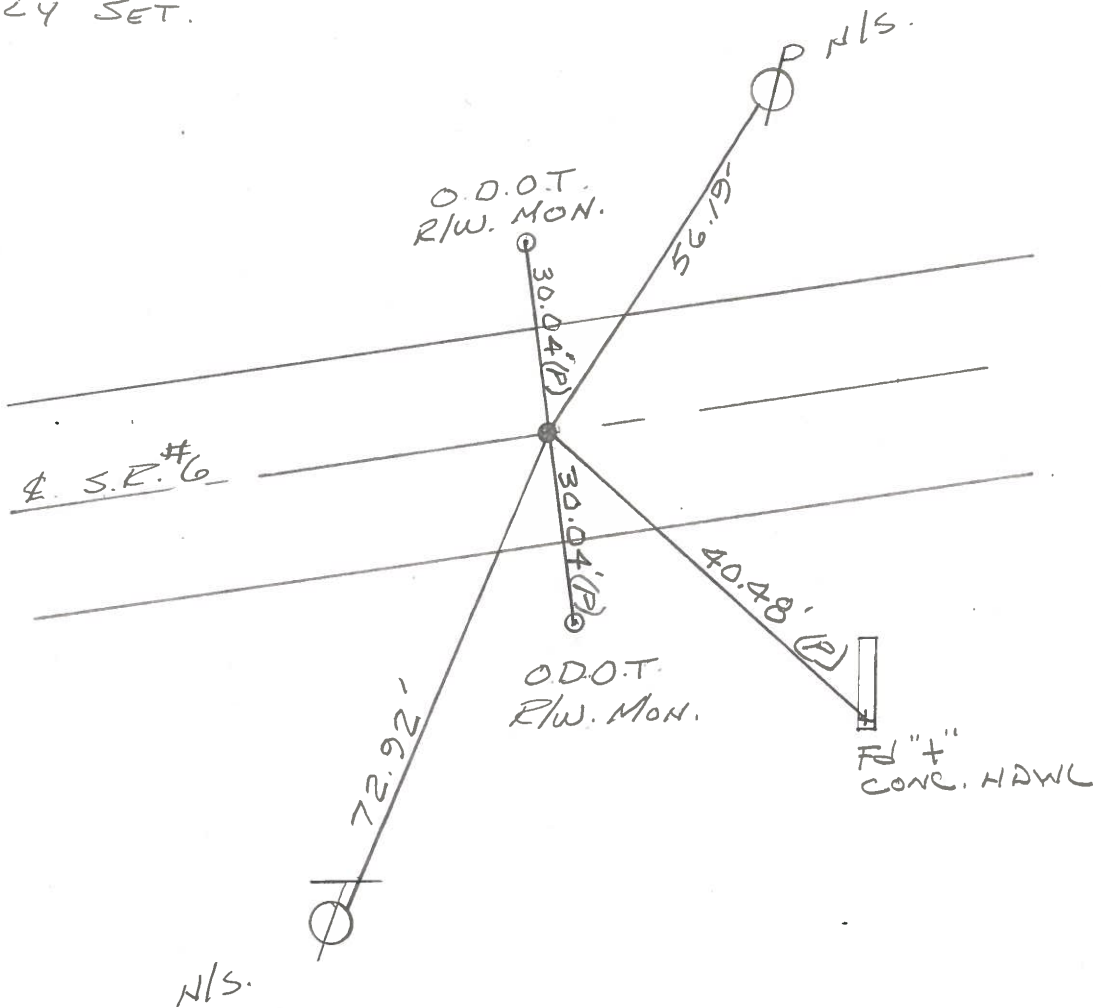
47



0400 AHEAD = SEC. H.J.

303+55 BACK = SEC. K.

SPK. GONE - PK/WASHER
PREVIOUSLY SET.



OD.OT. DISTRICT 2 SURVEY OFFICE

SHEET _____ OF _____

County Sandusky S.R. U.S.#6

Township Townsend

Section _____

T5N, R17E

Personnel Cronin

Ripple

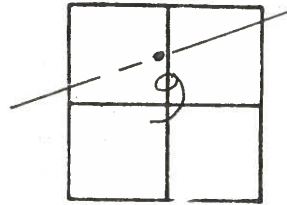
Geyman

Barbour

Date 9/26/84

Weather sunny

Temp. 48°



47

4/03/91

57°

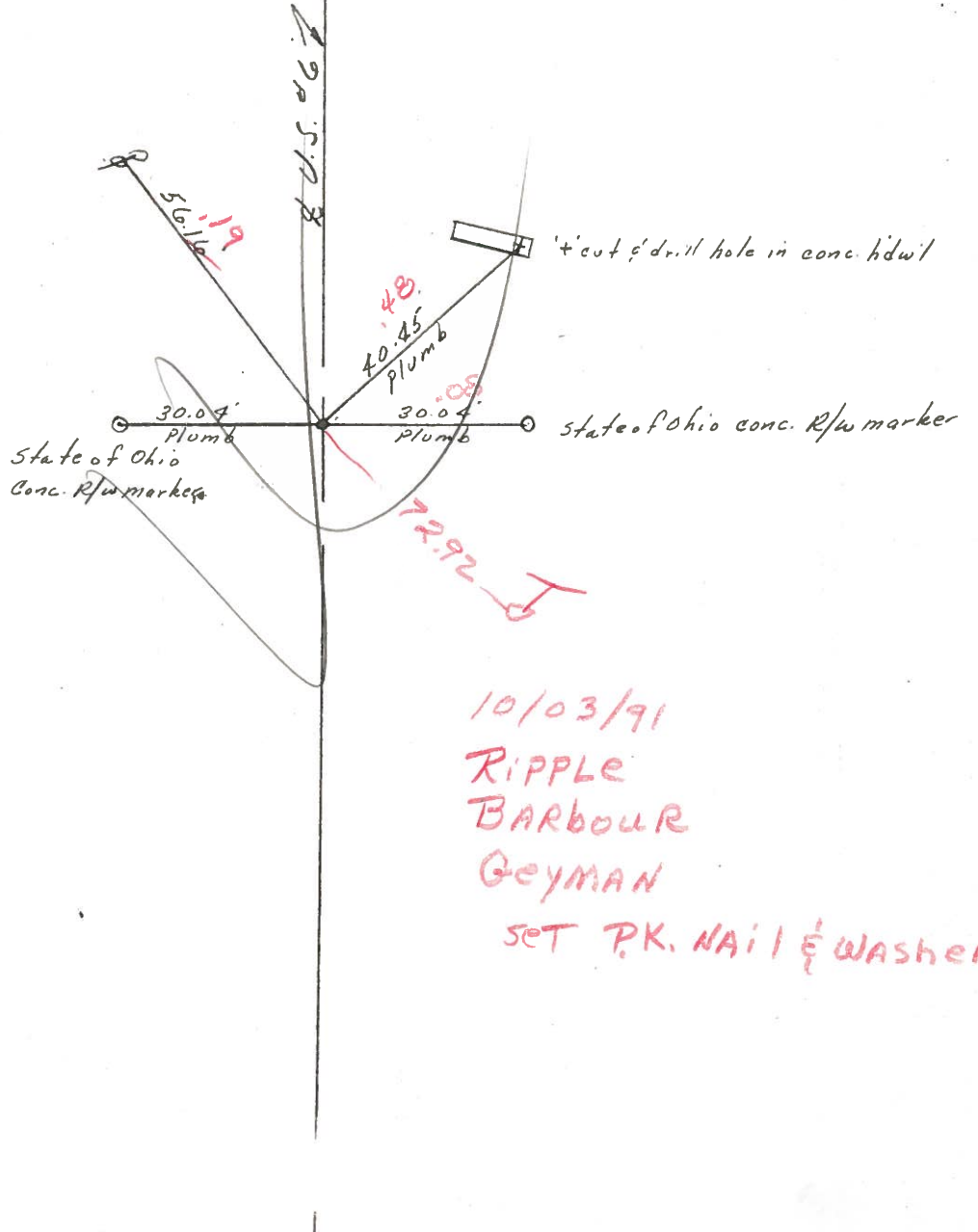
1544+09

0+00 Ahd. = Sec. H.J.

303+55 Bk. = Sec. K

Spike gone - Set PK

e' washer



10/03/91

RIPPLE

BARBOUR

GEYMAN

SET P.K. NAIL & WASHER

OD.O.T. DISTRICT 2 SURVEY OFFICE

SHEET _____ OF _____

County Sandusky S. R. U.S. #6

Date 9/26/84

Township Townsend

Weather sunny

Section _____

Temp. 78°

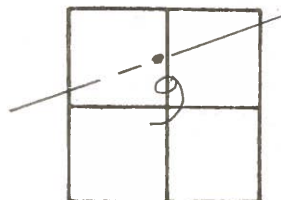
T5N, R1E

Personnel Cranin

Ripple

Geyman

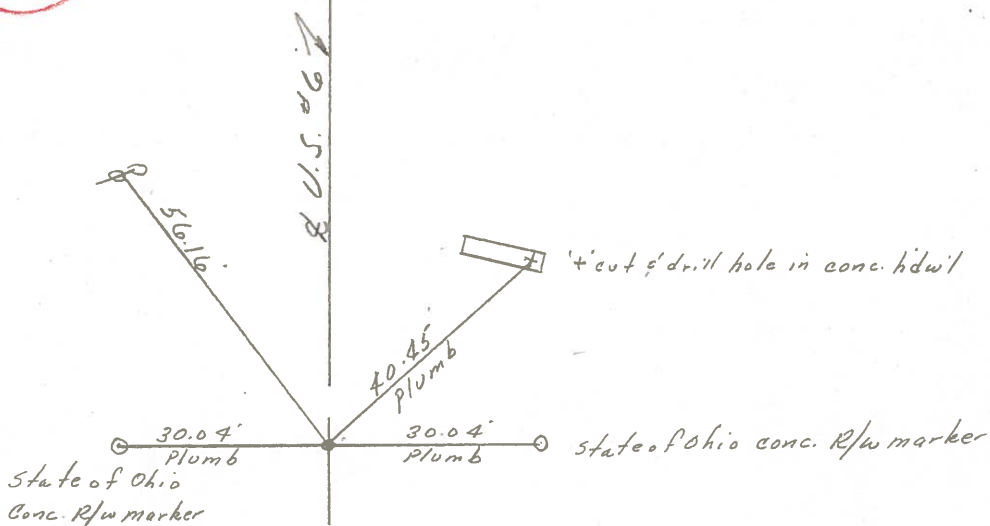
Barbour



47



0+00 Ahd. = Sec. H.J.
303+55 Bk. - Sec. K
spike gone - Set PK
e' washer



PERSONNEL	TITLE	PERSONNEL	TITLE
Cronin		Schneider	
Ash		Mosser	
Ripple		Barbour	
Geyman			

COUNTY Sandusky

S. R. # 6

WEATHER Sunny

SEC. K-H-J-Fremont-East

TEMP. 75°

DESCRIPTION Ties for Control Points

JOB NO. _____

