

O.D.O.T. DISTRICT 2 SURVEY OFFICE (USE ONLY)

PERSONNEL

REFERENCE NO. 49

SHEET 24 OF 34

NOTES RHOADES

DATE 11/20/23

ROUTE US 6

H.C. AUBLE

WEATHER WINDY

COUNTY SANDUSKY

R.C. MILLER

TEMP. 41°

TOWNSHIP TOWNSEND

SECTION 9

DWG BY RHOADES PID PAVETRAIN

T 5 N R 17 E

TYPE MONUMENT MAG/WASHER

ON SURFACE - ~~BELOW~~ ON

OFFSET 0.3' RT : RT

11.9' TO RT EDGE PAVEMENT

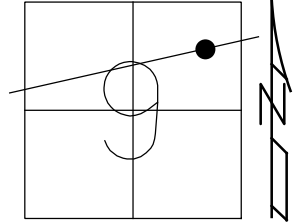
STATION: 1557+29

HORIZ.DATUM: NAD83 (2011)

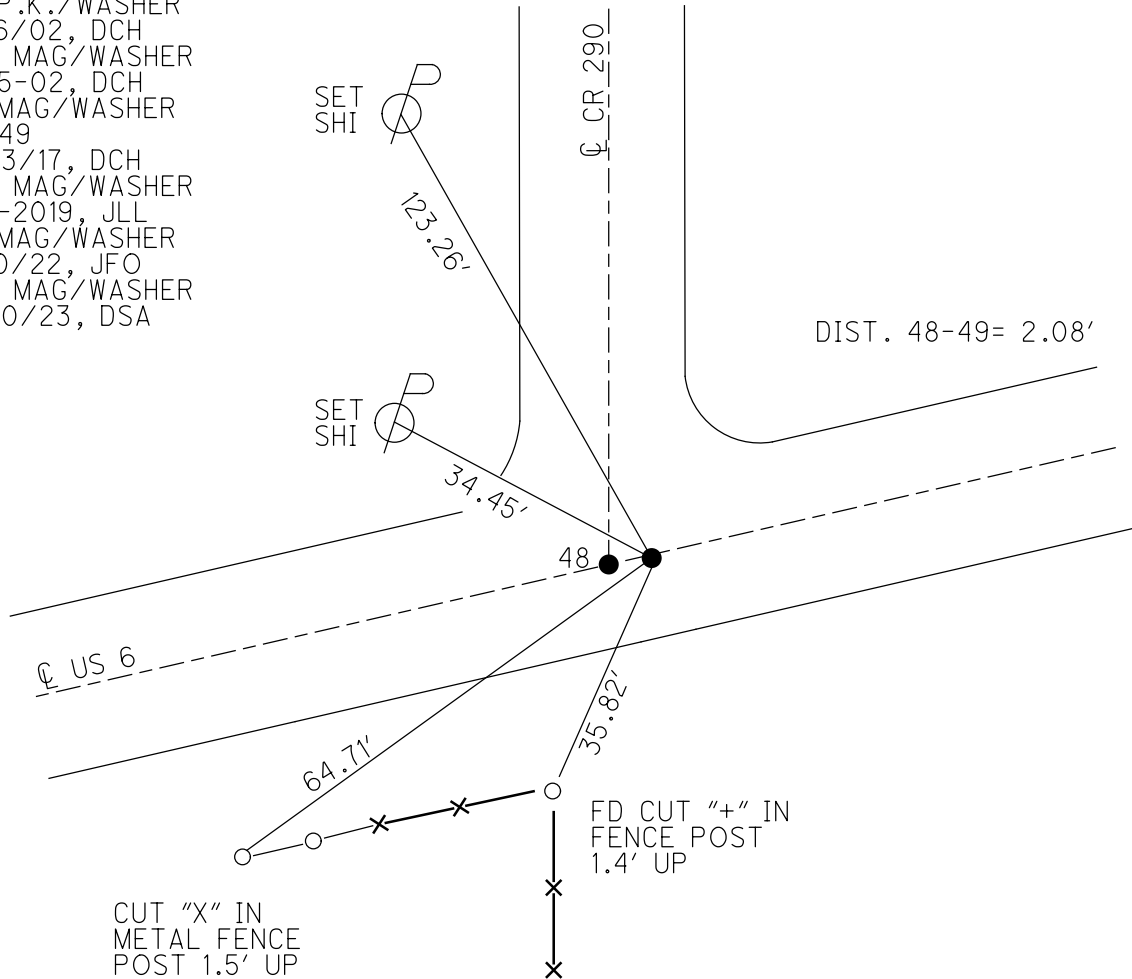
GEOID: NAVD88 2018

GRID: NORTHING: 636761.650

EASTING: 1858415.240



RECORD:
 FD P.K./WASHER
 3/16/02, DCH
 SET MAG/WASHER
 9-25-02, DCH
 FD MAG/WASHER
 REF49
 11/23/17, DCH
 SET MAG/WASHER
 8-5-2019, JLL
 FD MAG/WASHER
 2/10/22, JFO
 SET MAG/WASHER
 11/20/23, DSA



O.D.O.T. DISTRICT 2 SURVEY OFFICE (USE ONLY)

PERSONNEL

REFERENCE NO. 49

SHEET 24 OF 34

NOTES LEU
 H.C. LEU
 R.C. HAGEMEYER

DATE 8/6/18
 WEATHER HOT
 TEMP. 89°

ROUTE US 6
 COUNTY SANDUSKY
 TOWNSHIP TOWNSEND
 SECTION 9
 T 5 N R 17 E

DWG BY AUBLE PID 95769

TYPE MONUMENT MAG/WASHER

ON SURFACE - ~~BELOW~~ ON

OFFSET \varnothing PAVEMENT 0.3' ~~LT~~ : RT

11.9' TO RT EDGE PAVEMENT

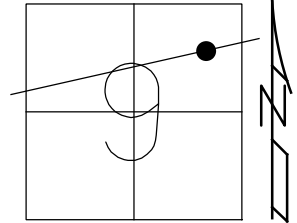
STATION: 1557+29

HORZ.DATUM: NAD83 (2011)

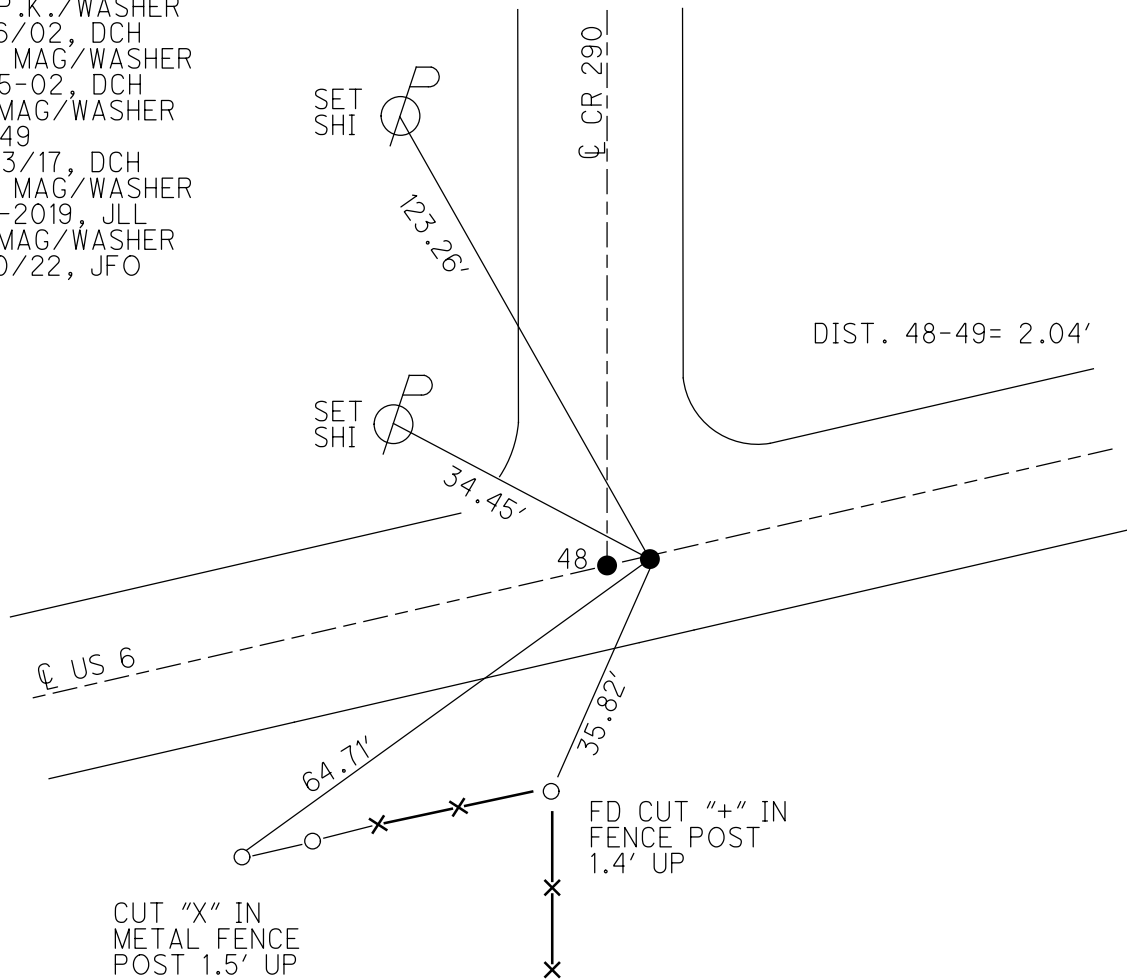
GEOID: 2012A

GRID: NORTHING: 636761.650

EASTING: 1858415.240



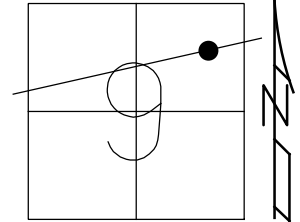
RECORD:
 FD P.K./WASHER
 3/16/02, DCH
 SET MAG/WASHER
 9-25-02, DCH
 FD MAG/WASHER
 REF49
 11/23/17, DCH
 SET MAG/WASHER
 8-5-2019, JLL
 FD MAG/WASHER
 2/10/22, JFO



O.D.O.T. DISTRICT 2 SURVEY OFFICE (USE ONLY)

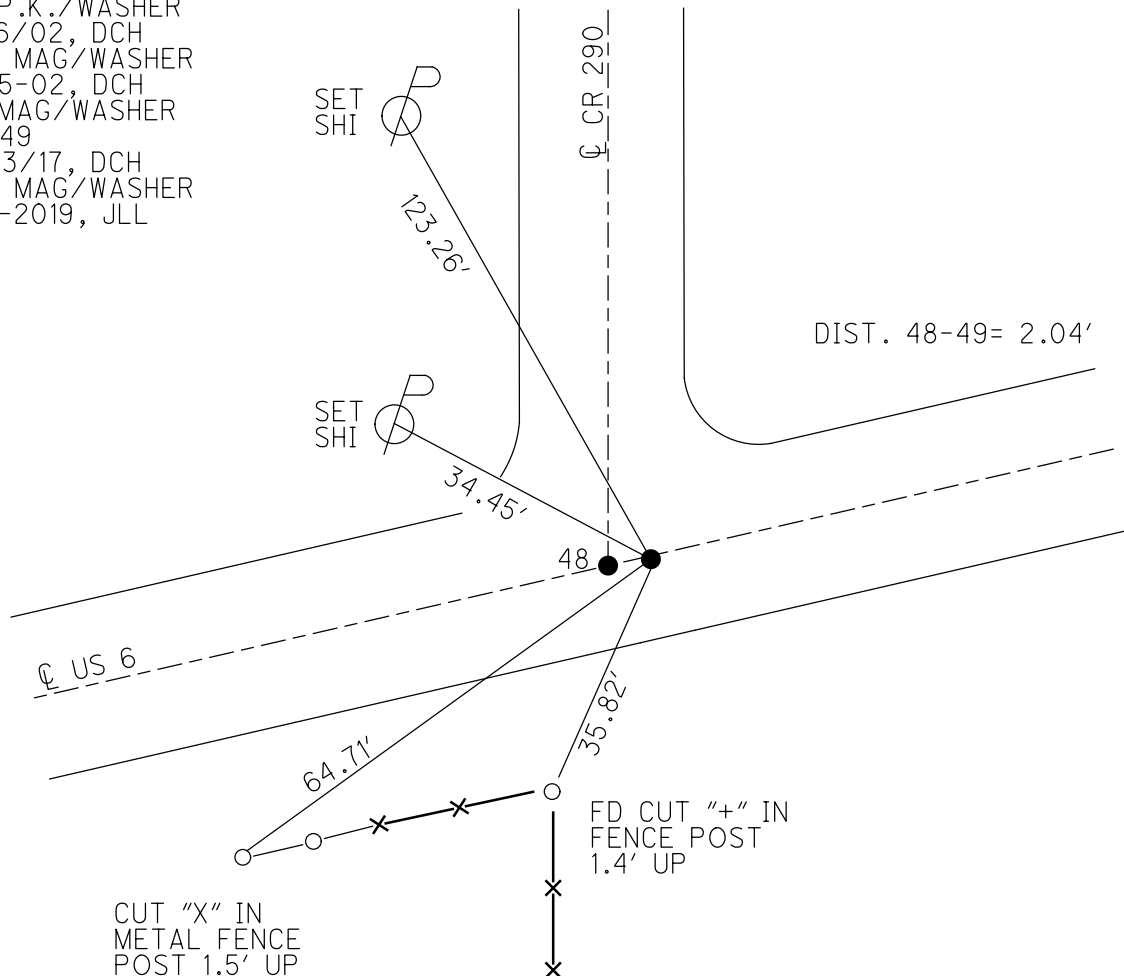
PERSONNEL	REFERENCE NO. <u>49</u>	SHEET <u>24</u> OF <u>34</u>
NOTES <u>LEU</u>	DATE <u>8/6/18</u>	ROUTE <u>US 6</u>
H.C. <u>LEU</u>	WEATHER <u>HOT</u>	COUNTY <u>SANDUSKY</u>
R.C. <u>HAGEMEYER</u>	TEMP. <u>89°</u>	TOWNSHIP <u>TOWNSEND</u>
DWG BY <u>AUBLE</u>	PID <u>95769</u>	SECTION <u>9</u>
		T <u>5</u> N R <u>17</u> E

TYPE MONUMENT MAG/WASHER
 ON SURFACE - ~~BELOW~~ ON
 OFFSET 11.9' TO RT EDGE PAVEMENT
 STATION: 1557+29



HORZ.DATUM: NAD83 (2011) GEOID: 2012A
 GRID: NORTHING: 636761.650 EASTING: 1858415.240

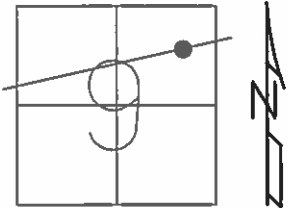
RECORD:
 FD P.K./WASHER
 3/16/02, DCH
 SET MAG/WASHER
 9-25-02, DCH
 FD MAG/WASHER
 REF 49
 11/23/17, DCH
 SET MAG/WASHER
 8-5-2019, JLL



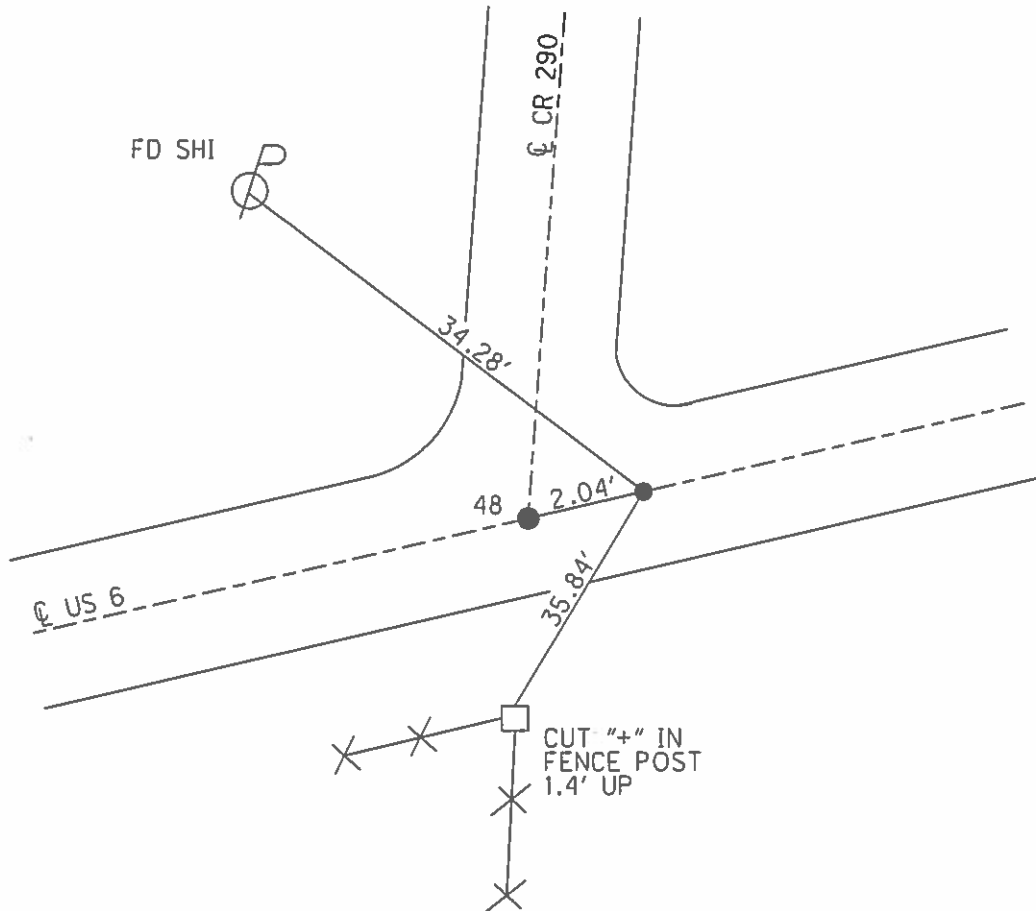
O.D.O.T. DISTRICT 2 SURVEY OFFICE (USE ONLY)

PERSONNEL	REFERENCE NO.	<u>49</u>	SHEET	<u>22</u> OF <u>31</u>	
NOTES	ROUSOS	DATE	<u>3-16-02</u>	ROUTE	<u>US 6</u>
H.C.	<u>VAN DUSEN</u>	WEATHER	<u>WINDY</u>	COUNTY	<u>SANDUSKY</u>
R.C.	<u>MOSSER</u>	TEMP.	<u>28°</u>	TOWNSHIP	<u>TOWNSEND</u>
	<u>HOMAN</u>			SECTION	<u>9</u>
				T	<u>5</u> N
				R	<u>17</u> E

TYPE MONUMENT PK/WASHER
 ON SURFACE - BELOW -
 LEFT - ☉ PAV'T - ~~RIGHT~~ 0.4'
11.9' TO RT EDGE PAVEMENT
 S.L.M. 1557+29
 GRID: NORTHING: - EASTING: -



RECORD:
 SET MAG/WASHER
 9-25-02
 DCH



O.D.O.T. DISTRICT 2 SURVEY OFFICE

PERSONNEL

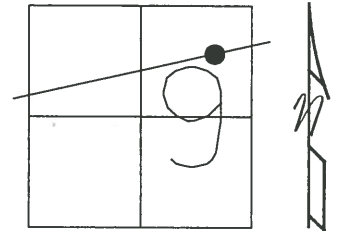
REFERENCE NO. 48-49 SHEET 18 OF 27

NOTES ROUSOS
 H.C. NAN DUSEN
 R.C. MOSSER
HOMAN

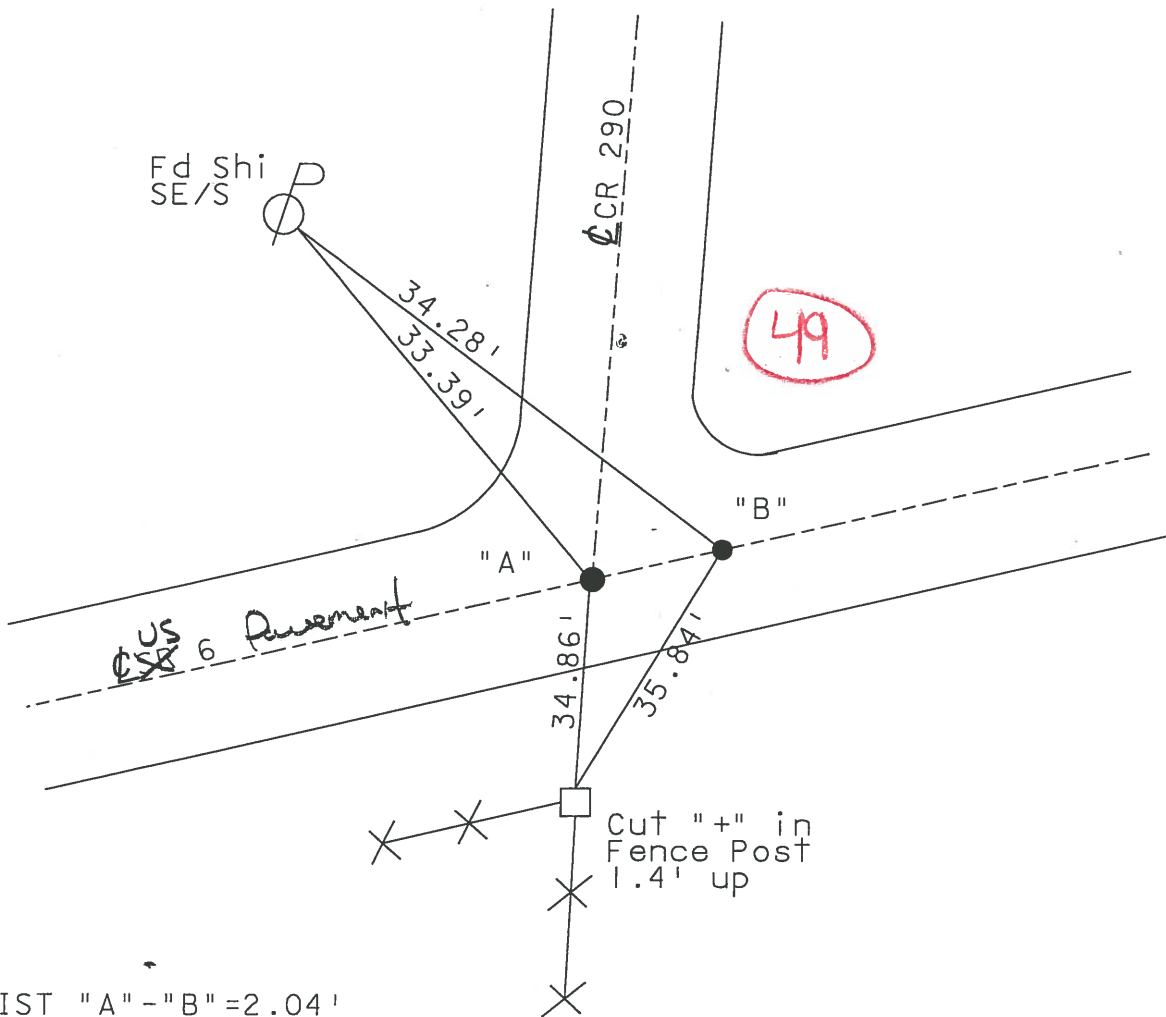
DATE 3-16-02
 WEATHER WINDY
 TEMP. 28°

ROUTE ^{U.S.} ~~SR~~ 6
 COUNTY Sandusky
 TOWNSHIP Townsend
 SECTION 9
T5 N R17 E

TYPE MONUMENT PK/Washer (ORIGIN UNKNOWN)
 ON SURFACE - BELOW _____
 LEFT - Q PAV'T - RIGHT .4' RT
11.9' TO RT EDGE PAVEMENT
 S.L.M. 1557+29



Set Mag Nails & Washers
 9-25-02
 DCH



DIST "A" - "B" = 2.04'