

O.D.O.T. DISTRICT 2 SURVEY OFFICE (USE ONLY)

PERSONNEL

REFERENCE NO. 50

SHEET 25 OF 34

NOTES MILLER

DATE 12/28/23

ROUTE US 6

H.C. RHOADES

WEATHER RAIN

COUNTY SANDUSKY

R.C. MILLER

TEMP. 44°

TOWNSHIP TOWNSEND

DWG BY RHOADES

PID PAVETRAIN

SECTION 9

T 5 N R 17 E

TYPE MONUMENT MAG/WASHER

ON SURFACE - ~~BELOW~~ ON

OFFSET Q PAVEMENT ON LT : RT

12.7' TO RT EDGE PAVEMENT

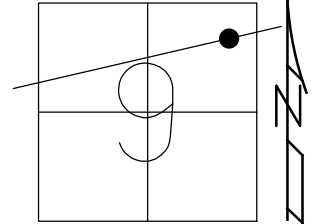
STATION: 1569+12

HORZ.DATUM: NAD83 (2011)

GEOID: NAVD88 2018

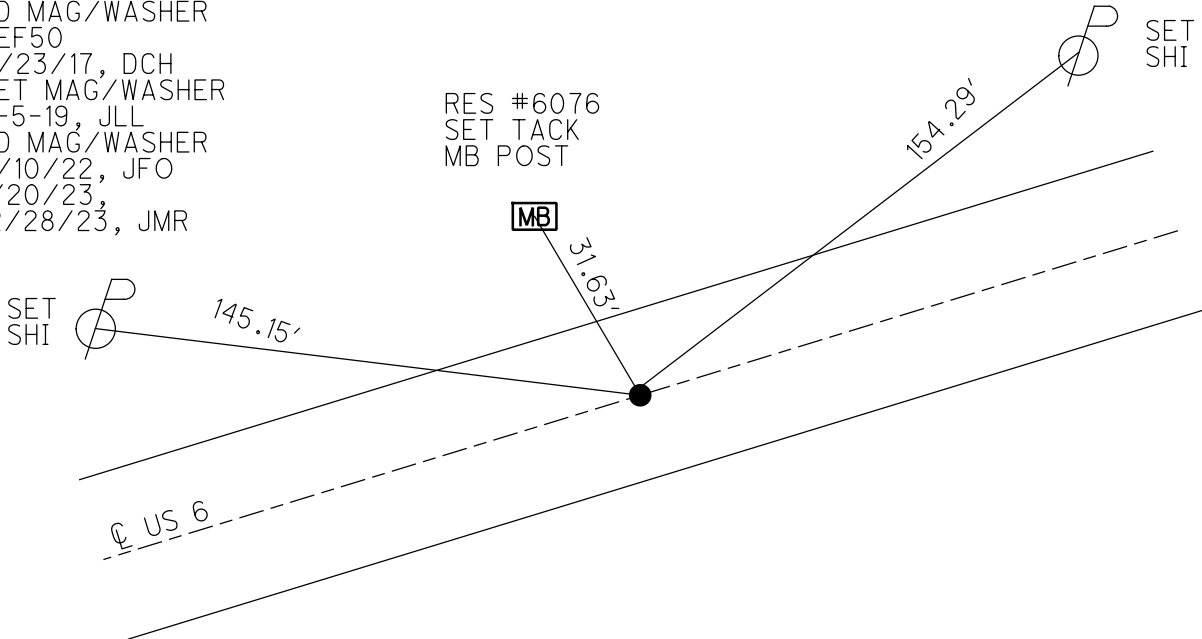
GRID: NORTHING: 637239.209

EASTING: 1859497.565



RECORD: P.I.
 $\Delta = 00^\circ 33' RT$ (PLAN)
 STA. 25+00
 P.K./WASHER
 BOAT SPIKE
 FD P.K./WASHER
 3/16/02, DCH
 FD P.K./WASHER
 REF50
 3-5-14, TMR
 FD MAG/WASHER
 REF50
 11/23/17, DCH
 SET MAG/WASHER
 8-5-19, JLL
 FD MAG/WASHER
 2/10/22, JFO
 1/20/23,
 12/28/23, JMR

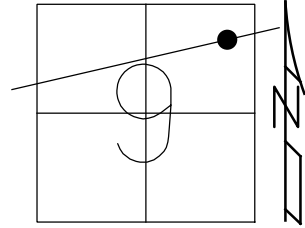
RES #6076
 SET TACK
 MB POST



O.D.O.T. DISTRICT 2 SURVEY OFFICE (USE ONLY)

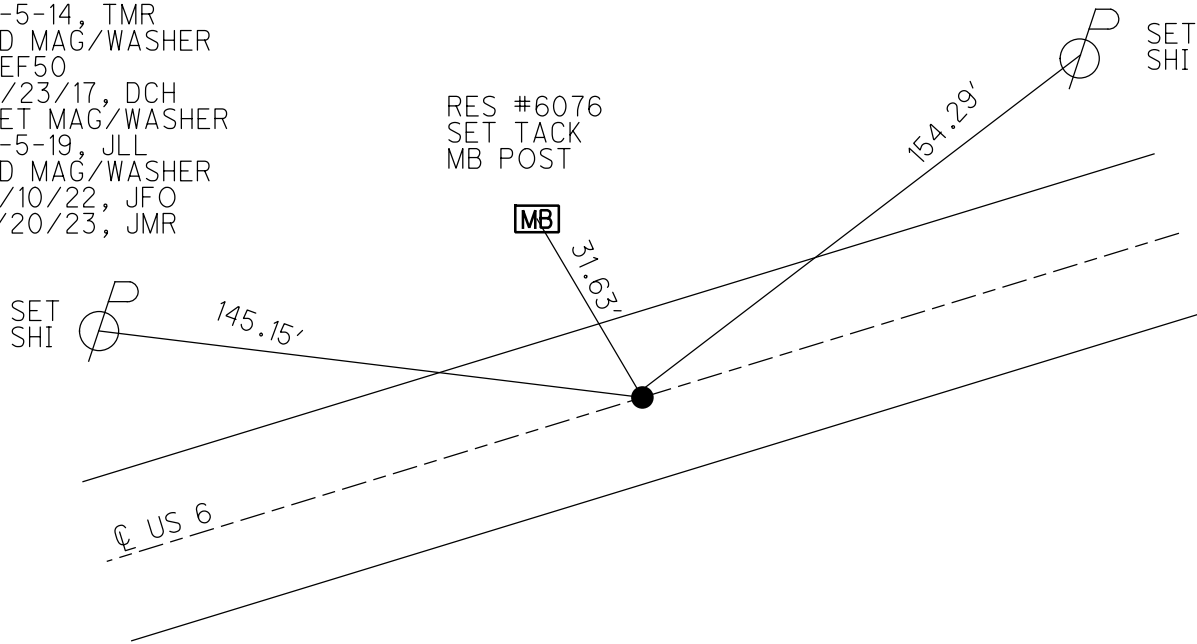
PERSONNEL _____ REFERENCE NO. 50 SHEET 25 OF 34
 NOTES LEU DATE 8/7/18 ROUTE US 6
 H.C. LEU WEATHER CLOUDY COUNTY SANDUSKY
 R.C. HAGEMeyer TEMP. 75° TOWNSHIP TOWNSEND
 DWG BY AUBLE PID PAVETRAIN SECTION 9
 T 5 N R 17 E

TYPE MONUMENT MAG/WASHER
 ON SURFACE - ~~BELOW~~ ON
 OFFSET Q PAVEMENT 0.6' LT : ~~RT~~
12.7' TO RT EDGE PAVEMENT
 STATION: 1569+12



HORZ. DATUM: NAD83 (2011) GEOID: 2012A
 GRID: NORTHING: 637239.209 EASTING: 1859497.565

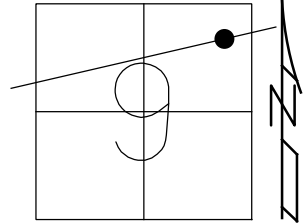
RECORD: P.I.
 $\Delta = 00^\circ 33' RT$ (PLAN)
 STA. 25+00
 PREVIOUS MONUMENTS:
 P.K./WASHER
 BOAT SPIKE
 FD P.K./WASHER
 3/16/02, DCH
 FD P.K./WASHER
 REF50
 3-5-14, TMR
 FD MAG/WASHER
 REF50
 11/23/17, DCH
 SET MAG/WASHER
 8-5-19, JLL
 FD MAG/WASHER
 2/10/22, JFO
 1/20/23, JMR



O.D.O.T. DISTRICT 2 SURVEY OFFICE (USE ONLY)

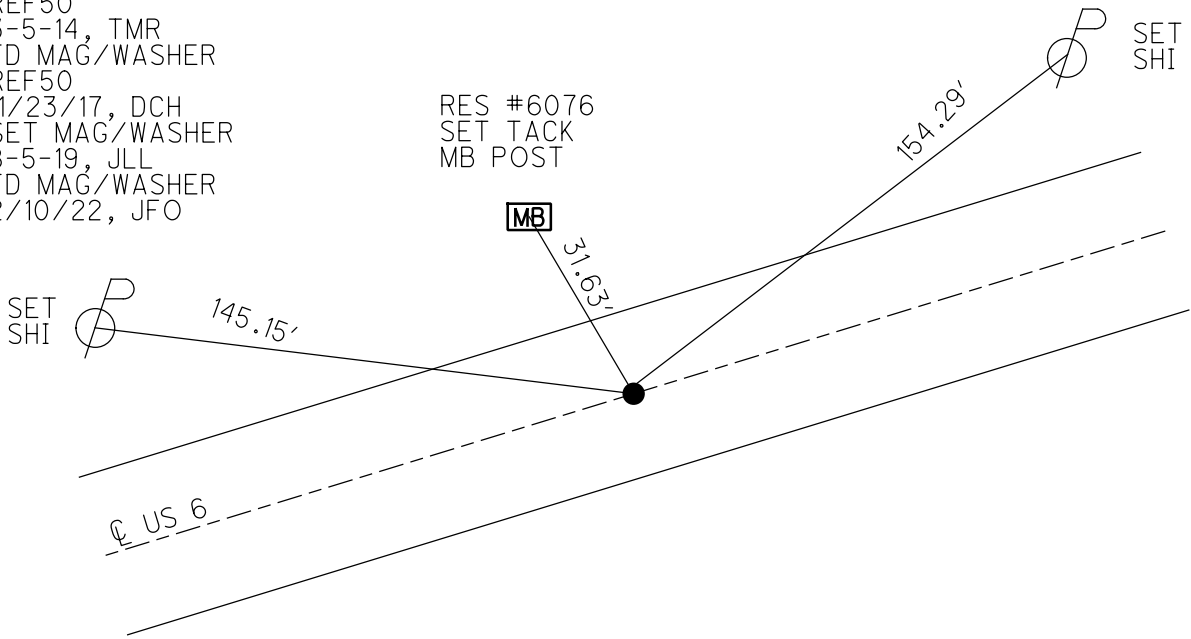
PERSONNEL _____ REFERENCE NO. 50 SHEET 25 OF 34
 NOTES LEU DATE 8/7/18 ROUTE US 6
 H.C. LEU WEATHER CLOUDY COUNTY SANDUSKY
 R.C. HAGEMEYER TEMP. 75° TOWNSHIP TOWNSEND
 DWG BY AUBLE PID 95769 SECTION 9
 T 5 N R 17 E

TYPE MONUMENT MAG/WASHER
 ON SURFACE - ~~BELOW~~ ON
 OFFSET 0.6' LT : ~~RT~~
12.7' TO RT EDGE PAVEMENT
 STATION: 1569+12



HORZ. DATUM: NAD83 (2011) GEOID: 2012A
 GRID: NORTHING: 637239.209 EASTING: 1859497.565

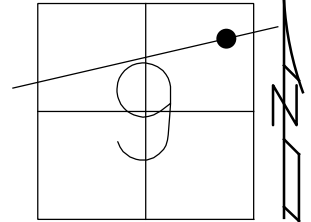
RECORD: P.I.
 $\Delta = 00^\circ 33' RT$ (PLAN)
 STA. 25+00
 PREVIOUS MONUMENTS:
 P.K./WASHER
 BOAT SPIKE
 FD P.K./WASHER
 3/16/02, DCH
 FD P.K./WASHER
 REF50
 3-5-14, TMR
 FD MAG/WASHER
 REF50
 11/23/17, DCH
 SET MAG/WASHER
 8-5-19, JLL
 FD MAG/WASHER
 2/10/22, JFO



O.D.O.T. DISTRICT 2 SURVEY OFFICE (USE ONLY)

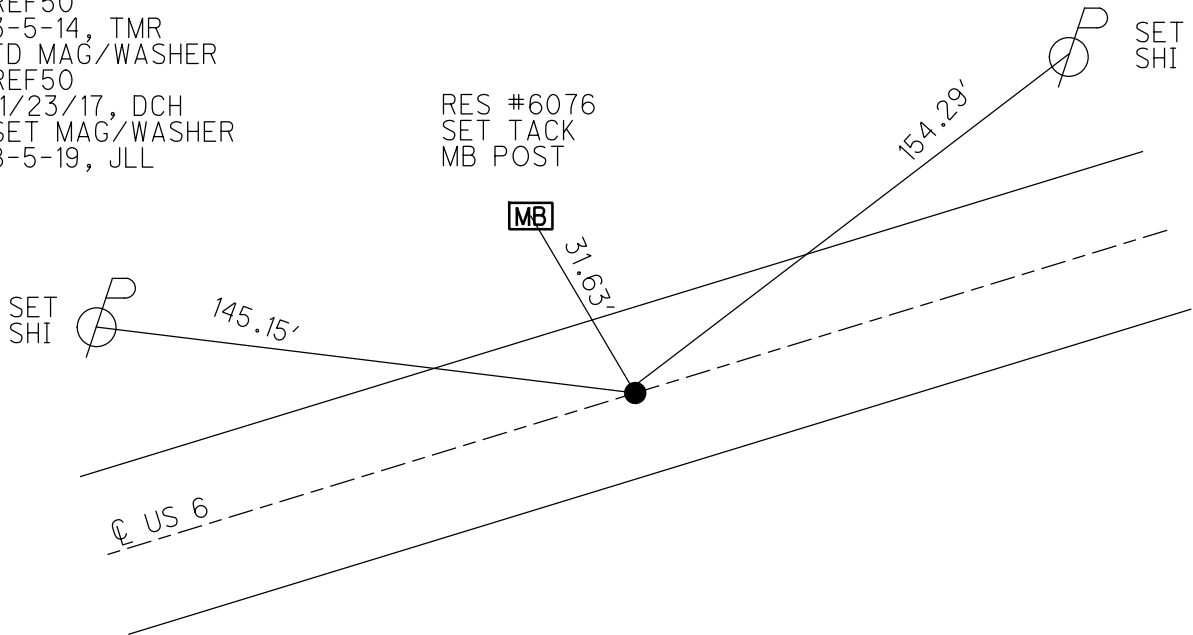
PERSONNEL _____ REFERENCE NO. 50 SHEET 25 OF 34
 NOTES LEU DATE 8/7/18 ROUTE US 6
 H.C. LEU WEATHER CLOUDY COUNTY SANDUSKY
 R.C. HAGEMeyer TEMP. 75° TOWNSHIP TOWNSEND
 DWG BY AUBLE PID 95769 SECTION 9
 T 5 N R 17 E

TYPE MONUMENT MAG/WASHER
 ON SURFACE - ~~BELOW~~ ON
 OFFSET 0.6' LT : ~~RT~~
12.7' TO RT EDGE PAVEMENT
 STATION: 1569+12



HORIZ.DATUM: NAD83 (2011) GEOID: 2012A
 GRID: NORTHING: 637239.209 EASTING: 1859497.565

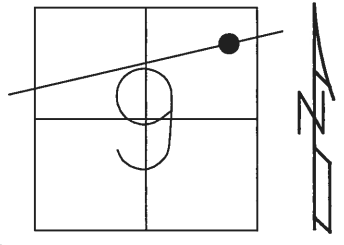
RECORD: P.I.
 $\Delta = 00^\circ 33' RT$ (PLAN)
 STA. 25+00
 PREVIOUS MONUMENTS:
 P.K./WASHER
 BOAT SPIKE
 FD P.K./WASHER
 3/16/02, DCH
 FD P.K./WASHER
 REF50
 3-5-14, TMR
 FD MAG/WASHER
 REF50
 11/23/17, DCH
 SET MAG/WASHER
 8-5-19, JLL



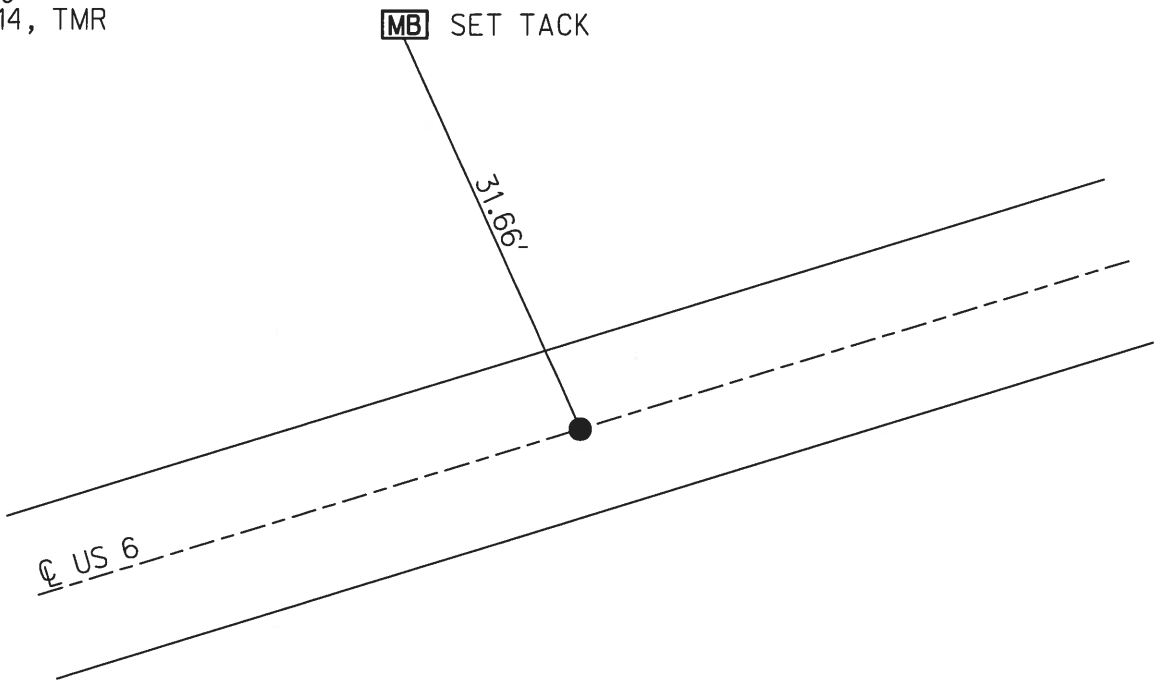
O.D.O.T. DISTRICT 2 SURVEY OFFICE (USE ONLY)

PERSONNEL _____ REFERENCE NO. 50 SHEET 23 OF 31
 NOTES ROUSOS DATE 03/16/02 ROUTE US 6
 H.C. VAN DUSEN WEATHER WINDY COUNTY SANDUSKY
 R.C. MOSSER TEMP. 28° TOWNSHIP TOWNSEND
 _____ HOMAN _____ SECTION 9
 _____ T 5 N R 17 E

TYPE MONUMENT _____ PK/WASHER _____
 ON SURFACE - ~~BELOW~~ _____ ON _____
 LEFT - ☉ PAV'T - ~~RIGHT~~ _____ 0.6'
12.7' TO RT EDGE PAVEMENT
 S.L.M. _____ 1571+16.58
 GRID: NORTHING: 637239.240 EASTING: 1859497.555



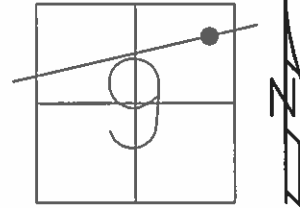
RECORD:
 PI Δ = 00° 33' RT (PLAN)
 STA 25+00
 PK/WASHER
 BOAT SPK
 FD PK/WASHER
 REF50
 3-5-14, TMR



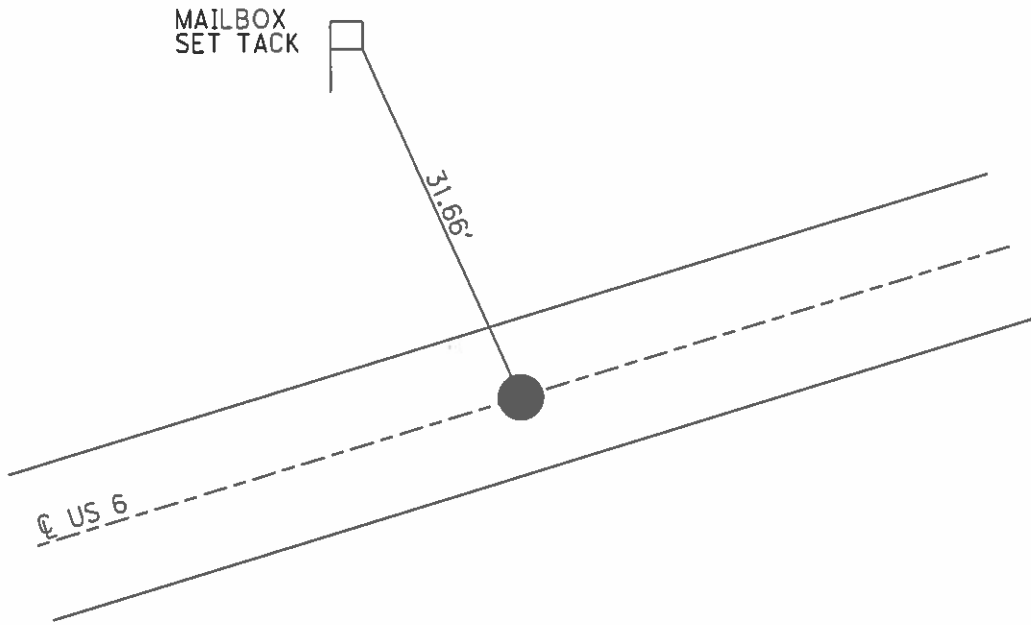
O.D.O.T. DISTRICT 2 SURVEY OFFICE (USE ONLY)

PERSONNEL _____ REFERENCE NO. 50 SHEET 23 OF 31
 NOTES ROUSOS DATE 03/16/02 ROUTE US 6
 H.C. VAN DUSEN WEATHER WINDY COUNTY SANDUSKY
 R.C. MOSSER TEMP. 28° TOWNSHIP TOWNSEND
 _____ HOMAN _____ SECTION 9
 _____ T 5 N R 17 E

TYPE MONUMENT _____ PK/WASHER _____
 ON SURFACE - ~~BELOW~~ _____ ON _____
 LEFT - ☉ PAV'T - ~~RIGHT~~ _____ 0.6' _____
12.7' TO RT EDGE PAVEMENT
 S.L.M. _____ 1569+12
 GRID: NORTHING: _____ EASTING: _____



RECORD: PI
 $\Delta = 00^\circ 33'$ RT (PLAN)
 STA 25+00
 PREVIOUS MONUMENTS
 PK/WASHER
 BOAT SPK



O.D.O.T. DISTRICT 2 SURVEY OFFICE

PERSONNEL _____

REFERENCE NO. _____

SHEET 31 OF 39

NOTES RIPPLE

H.C. BARBOUR

DATE 10-3-1991

ROUTE 6

R.C. GEYMAN

WEATHER _____

COUNTY SANDUSKY

TEMP. 75°

TOWNSHIP TOWNSEND

SECTION 9

T 5 N R 17 E

TYPE MONUMENT PK/WASHER

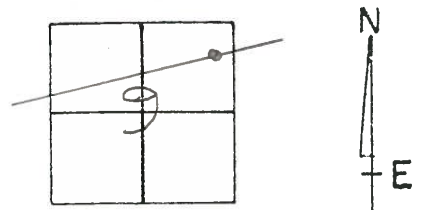
ON SURFACE - BELOW

LEFT - ☉ PAV'T. - RIGHT _____

TO _____ EDGE PAVEMENT

S.L.M. 1569+12

50



P.I.

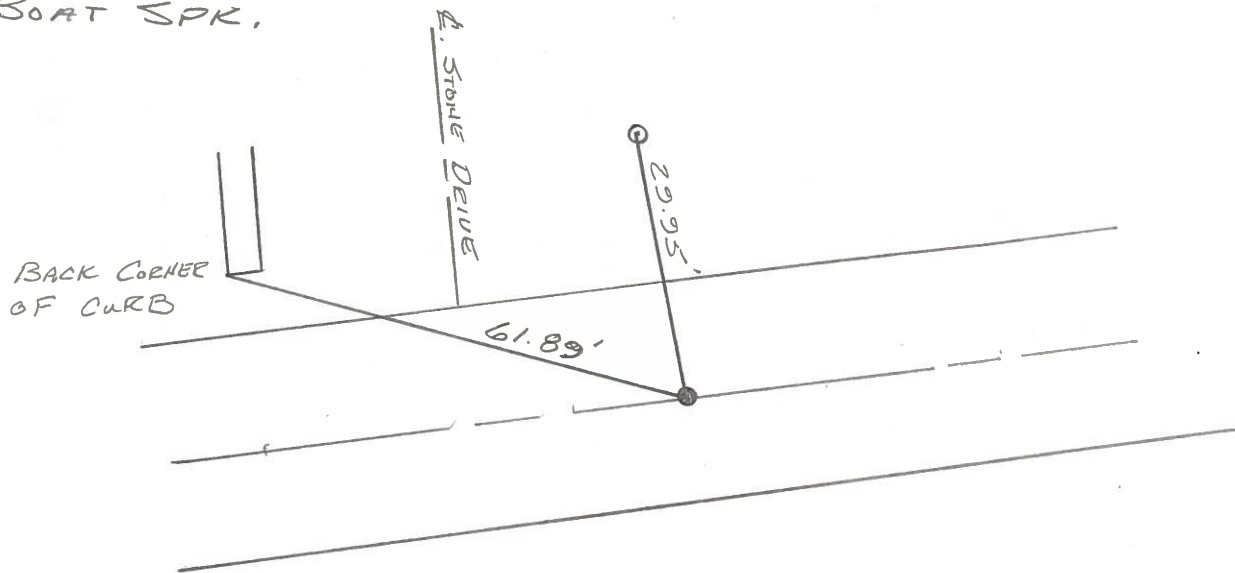
$\Delta = 00^{\circ} 33' \text{ RT. (PLAN)}$

STA. 25+00

PREVIOUS MONUMENTS

PK/WASHER

BOAT SPR.



OD.O.T. DISTRICT 2 SURVEY OFFICE

SHEET _____ OF _____

County Sandusky S.R.U.S # 6

Township Townsend

Section 9

T 5 N, R 17 E

Personnel Cronin

Ripple

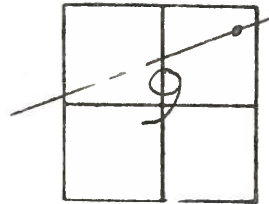
Geyman

Barbour

Date 9/24/84

Weather sunny

Temp. 82°



(50)

4/03/91

57°

10/03/91

RIPPLE

BARBOUR

GEYMAN

Temp 74°

SET P.K. NAIL & WASHER

1569+12

P.T. Δ = 00°33' RT (Plan)

25+00

set P.K. washer atop

boat spike

state of Ohio
R/W Marker

29.95 ✓

Stone drive

89
61.87

Back corner
of curb



Q.D.O.T. DISTRICT 2 SURVEY OFFICE

SHEET _____ OF _____

County Sandusky S.R.U.S. # 6

Date 9/24/84

Township Townsend

Weather sunny

Section 9

Temp. 82°

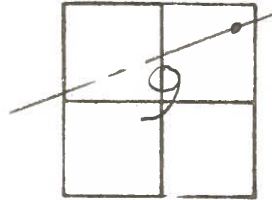
TEN, RIZE

Personnel Cronin

Ripple

Geyman

Barbour



50



P.I. $\Delta = 00^{\circ}33' RT$ (Plan

25+00

set P.K.'s washer atop
boat spike

state of Ohio
R/W Marker

29.95

& Stone drive

61.87'

Back corner
of four b

94.12'

PERSONNEL	TITLE	PERSONNEL	TITLE
Cronin		Schneider	
Ash		Mosser	
Ripple		Barbour	
Geyman			

COUNTY Sandusky

DATE drawn 8/4/75

S. R. #6

WEATHER sunny

SEC. H-1 - Fremont - East

TEMP. 78°

DESCRIPTION Ties for Control Points

JOB NO.

