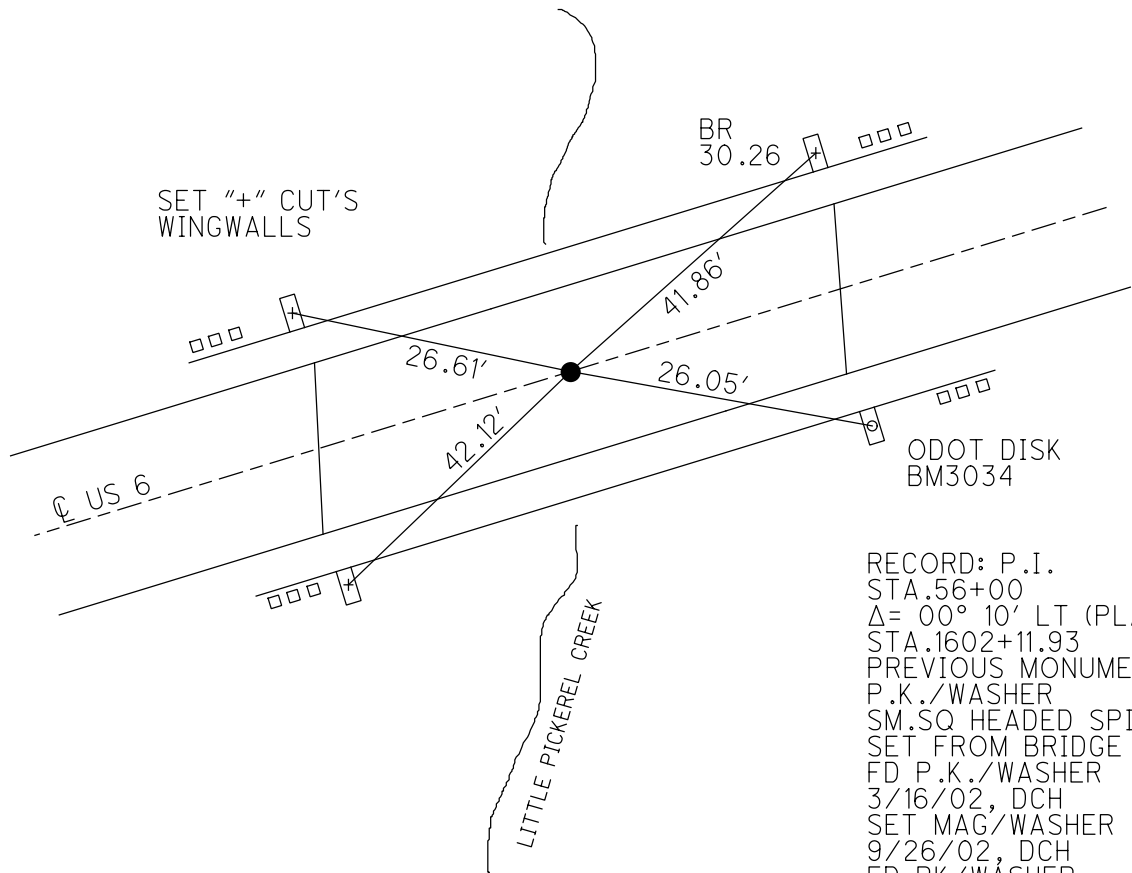
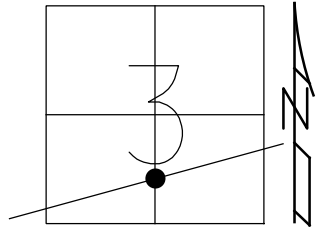


O.D.O.T. DISTRICT 2 SURVEY OFFICE (USE ONLY)

PERSONNEL \_\_\_\_\_ REFERENCE NO. 51 SHEET 26 OF 34  
 NOTES LEU DATE 8/7/18 ROUTE US 6  
 H.C. LEU WEATHER CLOUDY COUNTY SANDUSKY  
 R.C. HAGEMeyer TEMP. 75° TOWNSHIP TOWNSEND  
 DWG BY AUBLE PID PAVETRAN SECTION 3  
 T 5 N R 17 E

TYPE MONUMENT MAG/WASHER  
 ON SURFACE - ~~BELOW~~ ON  
 OFFSET ☉ PAVEMENT ON LT : RT  
12.5' TO LT EDGE PAVEMENT  
 STATION: 1600+09  
 HORZ.DATUM: NAD83 (2011) GEOID: 2012A  
 GRID: NORTHING: 638461.126 EASTING: 1862341.556



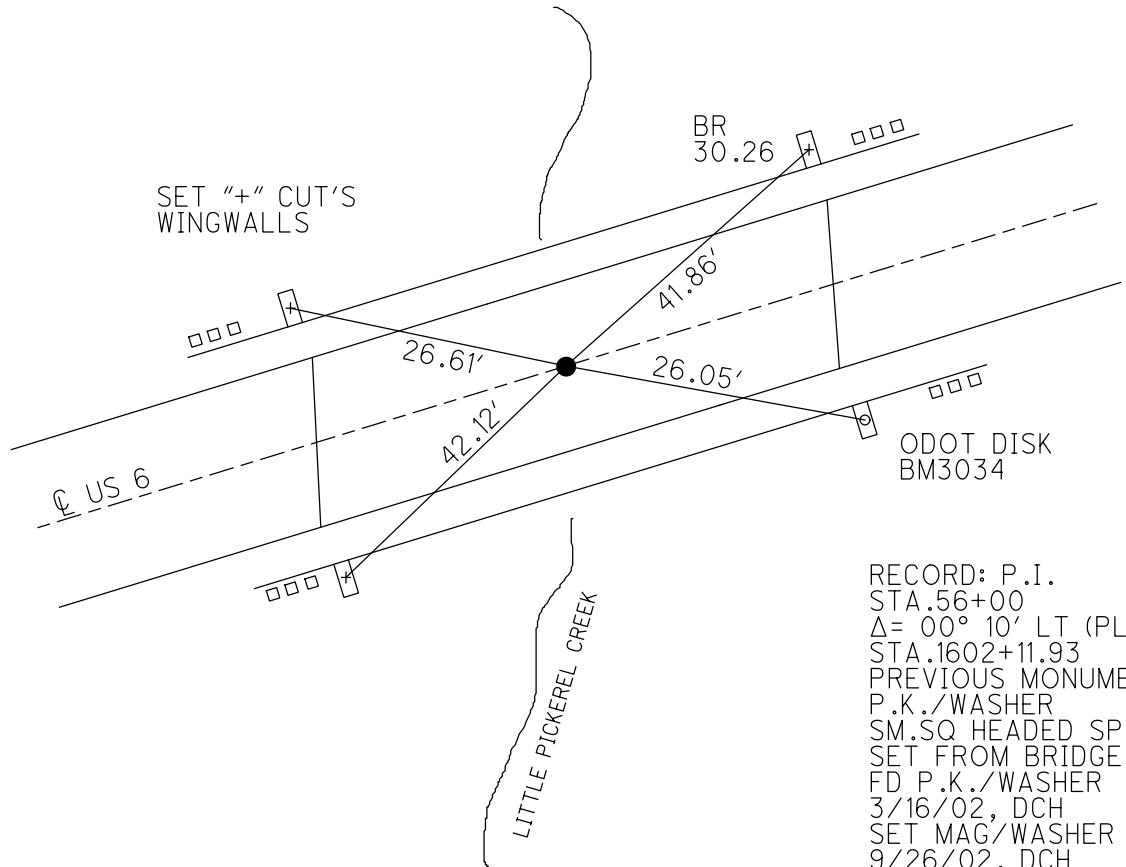
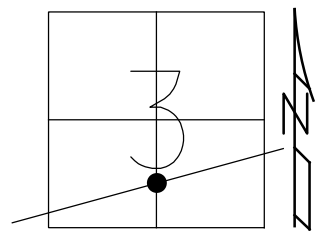
RECORD: P.I.  
 STA.56+00  
 $\Delta = 00^\circ 10' \text{ LT (PLAN)}$   
 STA.1602+11.93  
 PREVIOUS MONUMENTS:  
 P.K./WASHER  
 SM.SQ HEADED SPIKE  
 SET FROM BRIDGE PLANS  
 FD P.K./WASHER  
 3/16/02, DCH  
 SET MAG/WASHER  
 9/26/02, DCH  
 FD PK/WASHER  
 REF51  
 3-5-14, TMR  
 SET MAG/WASHER  
 8/6/19, JLL  
 FD MAG/WASHER  
 2/10/22, JFO  
 1/20/23, JMR

O.D.O.T. DISTRICT 2 SURVEY OFFICE (USE ONLY)

PERSONNEL \_\_\_\_\_ REFERENCE NO. 51 SHEET 26 OF 34  
 NOTES LEU DATE 8/7/18 ROUTE US 6  
 H.C. LEU WEATHER CLOUDY COUNTY SANDUSKY  
 R.C. HAGEMeyer TEMP. 75° TOWNSHIP TOWNSEND  
 DWG BY AUBLE PID 95769 SECTION 3  
 T 5 N R 17 E

TYPE MONUMENT MAG/WASHER  
 ON SURFACE - ~~BELOW~~ ON  
 OFFSET Q PAVEMENT ON LT : RT  
12.5' TO LT EDGE PAVEMENT  
 STATION: 1600+09

HORZ. DATUM: NAD83 (2011) GEOID: 2012A  
 GRID: NORTHING: 638461.126 EASTING: 1862341.556



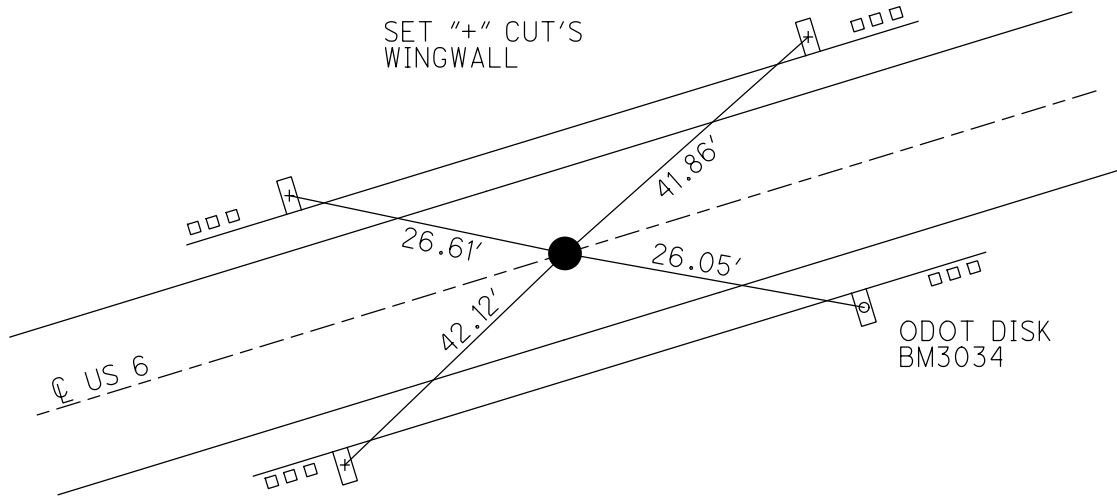
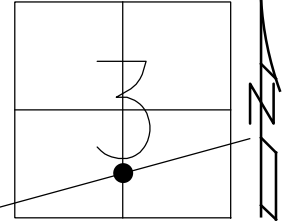
RECORD: P.I.  
 STA. 56+00  
 $\Delta = 00^\circ 10' \text{ LT (PLAN)}$   
 STA. 1602+11.93  
 PREVIOUS MONUMENTS:  
 P.K./WASHER  
 SM.SQ HEADED SPIKE  
 SET FROM BRIDGE PLANS  
 FD P.K./WASHER  
 3/16/02, DCH  
 SET MAG/WASHER  
 9/26/02, DCH  
 FD PK/WASHER  
 REF51  
 3-5-14, TMR  
 SET MAG/WASHER  
 8/6/19, JLL  
 FD MAG/WASHER  
 2/10/22, JFO

O.D.O.T. DISTRICT 2 SURVEY OFFICE (USE ONLY)

PERSONNEL \_\_\_\_\_ REFERENCE NO. 51 SHEET 26 OF 34  
 NOTES LEU DATE 8/7/18 ROUTE US 6  
 H.C. LEU WEATHER CLOUDY COUNTY SANDUSKY  
 R.C. HAGEMEYER TEMP. 75° TOWNSHIP TOWNSEND  
 DWG BY AUBLE PID 95769 SECTION 3  
 T 5 N R 17 E

TYPE MONUMENT MAG/WASHER  
 ON SURFACE - ~~BELOW~~ ON  
 OFFSET ☉ PAVEMENT ON LT : RT  
12.5' TO LT EDGE PAVEMENT  
 STATION: 1600+09

HORZ.DATUM: NAD83 (2011) GEOID: 2012A  
 GRID: NORTHING: 638461.126 EASTING: 1862341.556



RECORD: P.I.  
 STA.56+00  
 $\Delta = 00^\circ 10' \text{ LT (PLAN)}$   
 STA.1602+11.93  
 PREVIOUS MONUMENTS:  
 P.K./WASHER  
 SM.SQ HEADED SPIKE  
 SET FROM BRIDGE PLANS  
 FD P.K./WASHER  
 3/16/02, DCH  
 SET MAG/WASHER  
 9/26/02, DCH  
 FD PK/WASHER  
 REF51  
 3-5-14, TMR  
 SET MAG/WASHER  
 8/6/19, JLL

**O.D.O.T. DISTRICT 2 SURVEY OFFICE (USE ONLY)**

PERSONNEL \_\_\_\_\_ REFERENCE NO. 51 SHEET 24 OF 31

NOTES ROUSOS DATE 03/16/02 ROUTE US 6

H.C. VAN DUSEN WEATHER WINDY COUNTY SANDUSKY

R.C. MOSSER TEMP. 28° TOWNSHIP TOWNSEND

\_\_\_\_\_ SECTION 3

T 5 N R 17 E

TYPE MONUMENT \_\_\_\_\_ PK/WASHER \_\_\_\_\_

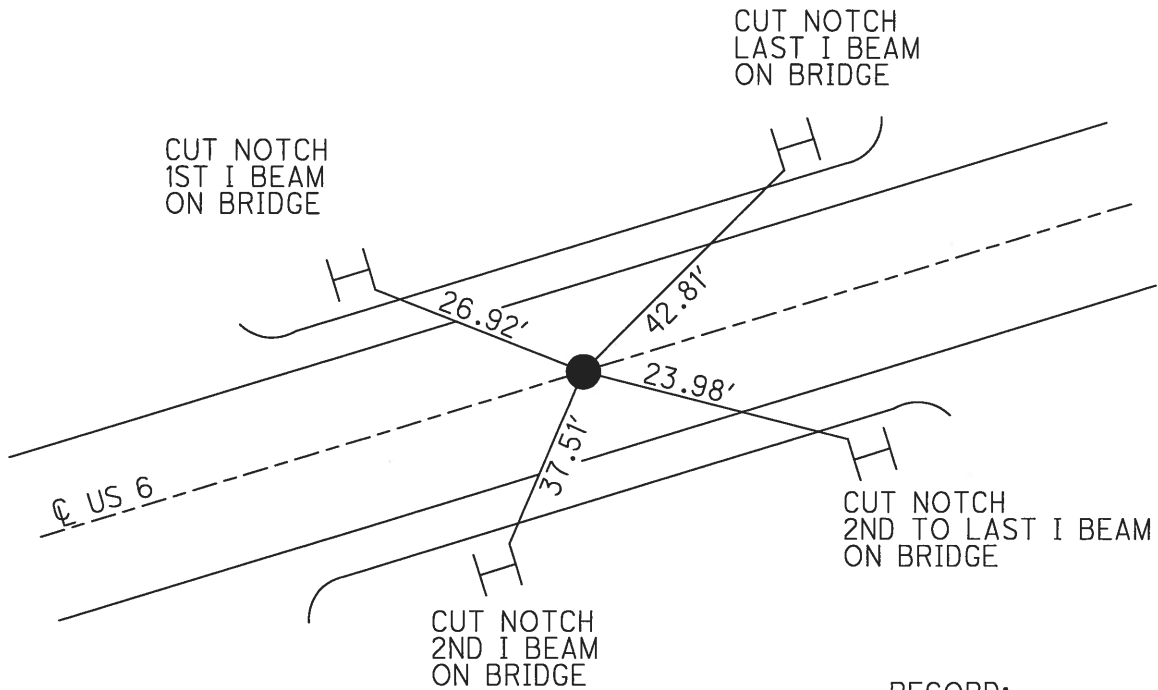
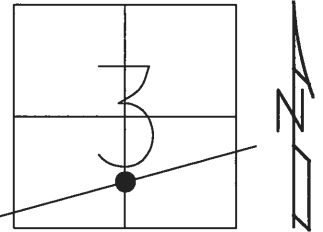
ON SURFACE - ~~BELOW~~ \_\_\_\_\_ ON \_\_\_\_\_

~~LEFT~~ - Q PAV'T - ~~RIGHT~~ \_\_\_\_\_ ON \_\_\_\_\_

12.5' TO LT EDGE PAVEMENT

S.L.M. \_\_\_\_\_ 1602+11.95

GRID: NORTHING: 638461.126 EASTING: 1862341.557

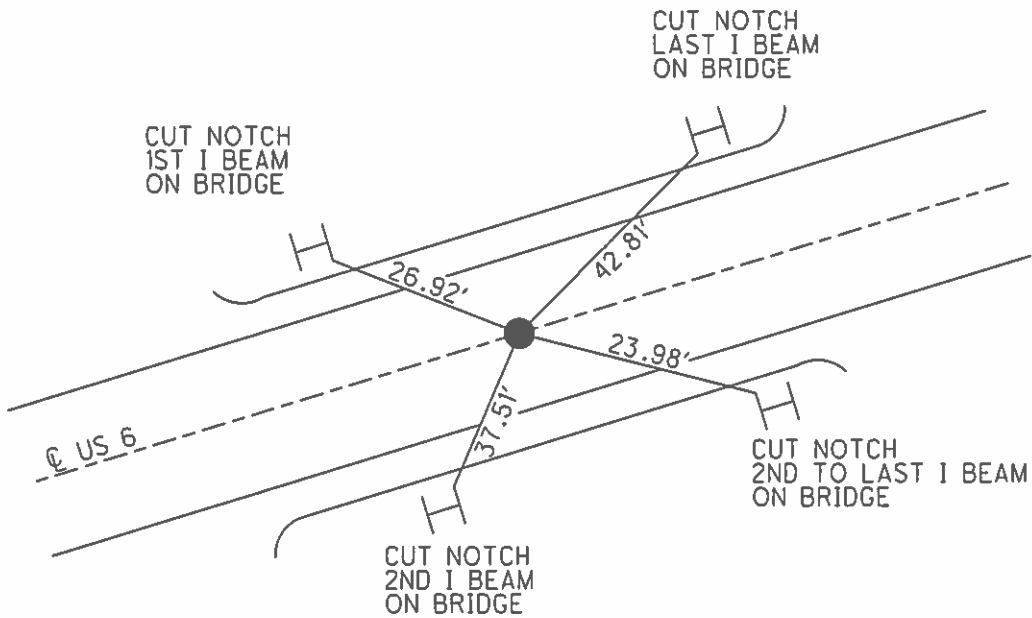
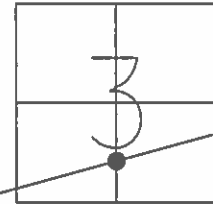


RECORD:  
 PI (56+00)  
 $\Delta = 00^\circ 10' \text{ LT (PLAN)}$   
 OLD STA 1602+11.93  
 PK/WASHER  
 SM SQ HEADED SPK SET  
 FROM BRIDGE PLANS  
 SET MAG/WASHER  
 9/26/02, DCH  
 FD PK/WASHER  
 REF51  
 3-5-14, TMR

**O.D.O.T. DISTRICT 2 SURVEY OFFICE (USE ONLY)**

PERSONNEL \_\_\_\_\_ REFERENCE NO. 51 SHEET 24 OF 31  
 NOTES ROUSOS DATE 03/16/02 ROUTE US 6  
 H.C. VAN DUSEN WEATHER WINDY COUNTY SANDUSKY  
 R.C. MOSSER TEMP. 28° TOWNSHIP TOWNSEND  
 \_\_\_\_\_ HOMAN \_\_\_\_\_ SECTION 3  
 \_\_\_\_\_ T 5 N R 17 E

TYPE MONUMENT \_\_\_\_\_ PK/WASHER \_\_\_\_\_  
 ON SURFACE - ~~BELOW~~ \_\_\_\_\_ ON \_\_\_\_\_  
~~LEFT~~ - Q PAV'T - ~~RIGHT~~ \_\_\_\_\_ ON \_\_\_\_\_  
12.5' TO LT. EDGE PAVEMENT  
 S.L.M. \_\_\_\_\_ 1600+09  
 GRID: NORTHING: \_\_\_\_\_ EASTING: \_\_\_\_\_



RECORD: P1  
 (56+00)  
 $\Delta = 00^\circ 10' \text{ LT (PLAN)}$   
 OLD STA 1602+11.93  
 PREVIOUS MONUMENTS  
 PK/WASHER  
 SM SQ HEADED SPK SET  
 FROM BRIDGE PLANS  
 SET MAG/WASHER  
 09/26/02 DCH

O.D.O.T. DISTRICT 2 SURVEY OFFICE

PERSONNEL

REFERENCE NO. 51

SHEET 20 OF 27

NOTES ROUSOS

DATE 3-16-02

ROUTE <sup>U.S.</sup> ~~SR~~ 6

H.C. VAN DUSEN

WEATHER WINDY

COUNTY Sandusky

R.C. MOSSER

TEMP. 28°

TOWNSHIP Townsend

HOMAN

SECTION 3

T5 N R17 E

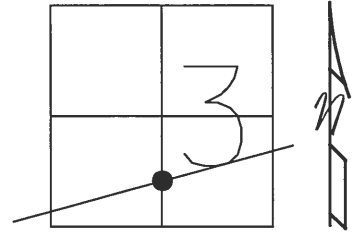
TYPE MONUMENT PK/Washer

ON SURFACE - ~~BELOW~~ On Surface

~~LEFT - C~~ PAV'T - ~~RIGHT~~

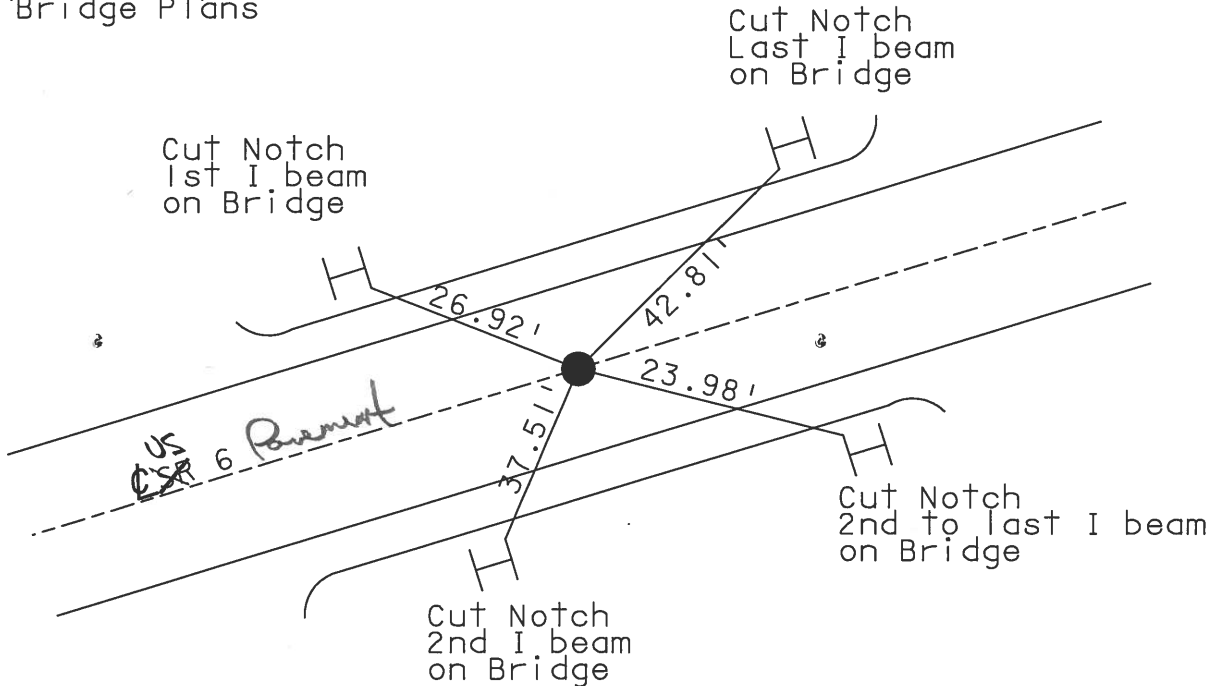
12.5' TO LT EDGE PAVEMENT

S.L.M. 1600+09



P.I. (56+00)  
 $\Delta = 00^{\circ} 10'$  LT (PLAN)  
 Old STA 1602+11.93  
 Previous Monuments  
 PK/Washer  
 Sm Sq headed Spk Set  
 From Bridge Plans

Set Mag Nail & Washer  
 9-26-02  
 DCH



# O.D.O.T. DISTRICT 2 SURVEY OFFICE

PERSONNEL \_\_\_\_\_

REFERENCE NO. 51

SHEET 32 OF 39

NOTES PIPPE

H.C. BARBOUR

DATE 10-3-1991

ROUTE 6

R.C. GEYMAN

WEATHER —

COUNTY SANDUSKY

TEMP. 74°

TOWNSHIP TOWNSEND

SECTION 3

T 5 N R 17 E

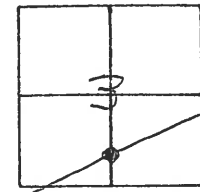
TYPE MONUMENT PK/WASHER

ON SURFACE - BELOW

LEFT - ℄ PAV'T. - RIGHT —

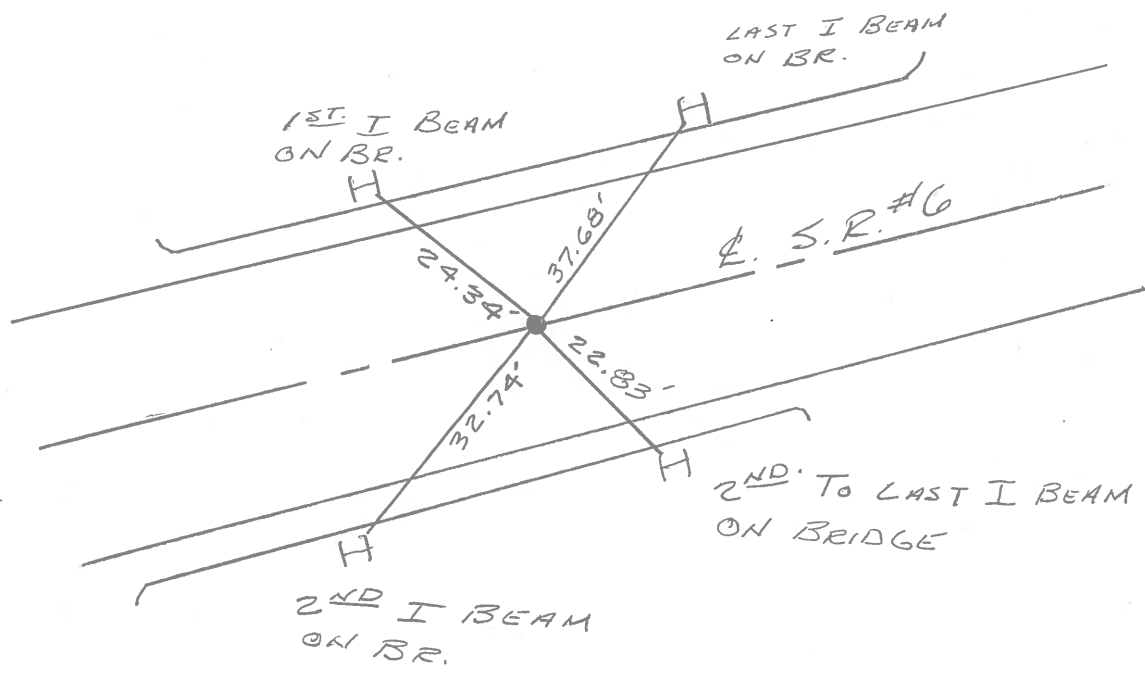
— TO — EDGE PAVEMENT

S.L.M. 1600+09



P.I. (56+00)  
 $\Delta = 00^{\circ} 10'$  LT. (PLAN)  
 OLD STA. 1602+11.93

PREVIOUS MONUMENTS  
 ① PK/WASHER  
 ② SM. SQ. HEADED SPK. SET FROM BRIDGE PLANS.



ODOT DISTRICT 2 SURVEY OFFICE

SHEET \_\_\_\_\_ OF \_\_\_\_\_

County Sandusky S.R. #6

Date 8/14/84

Township Townsend

Weather sunny

Section 3

Temp. 80°

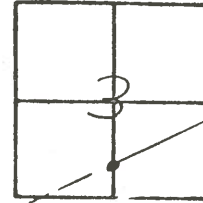
T5N, R7E

Personnel Cronin

Ripple

Geyman

Barbour



(51)

4/03/91

1600+09

P.I. A = 00°10' LT (Pka)

1602+11.93 56+00

Set small sq headed spike  
from bridge plans - set P.K. &  
washer 9/26/84

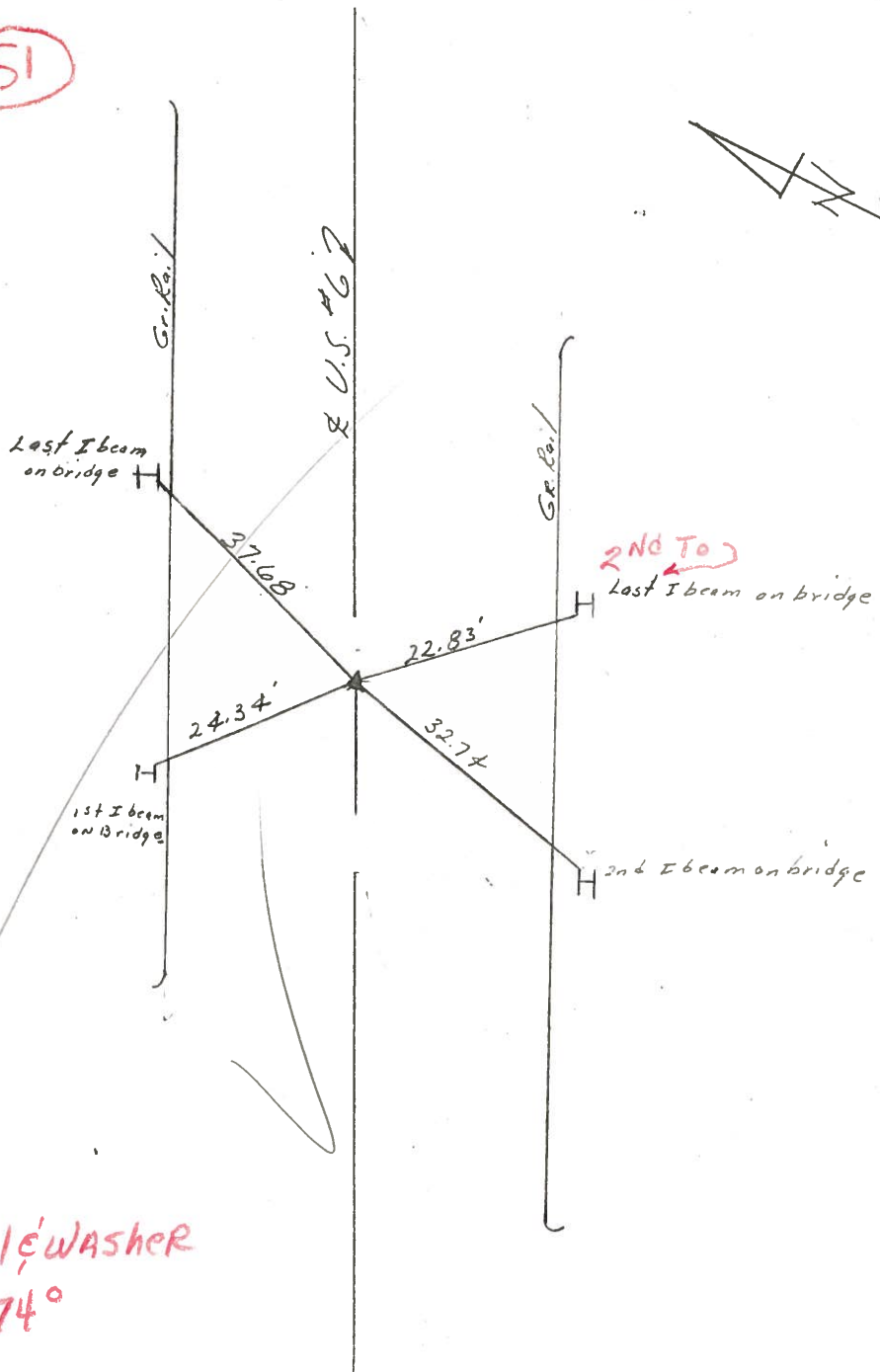
Knocked out  
By Life Lite

10/03/91

RIPPLE  
BARBOUR  
GEYMAN

Resct. P.K. Nail & Washer

Temp. 74°





Q.D.O.T. DISTRICT 2 SURVEY OFFICE

SHEET \_\_\_\_\_ OF \_\_\_\_\_

County Sandusky S.R. #6

Date 8/14/84

Township Townsend

Weather sunny

Section 3

Temp. 80°

T5N, R17E

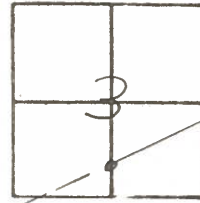
Personnel Cronin

Ripple

Geyman

Barbour

# 51

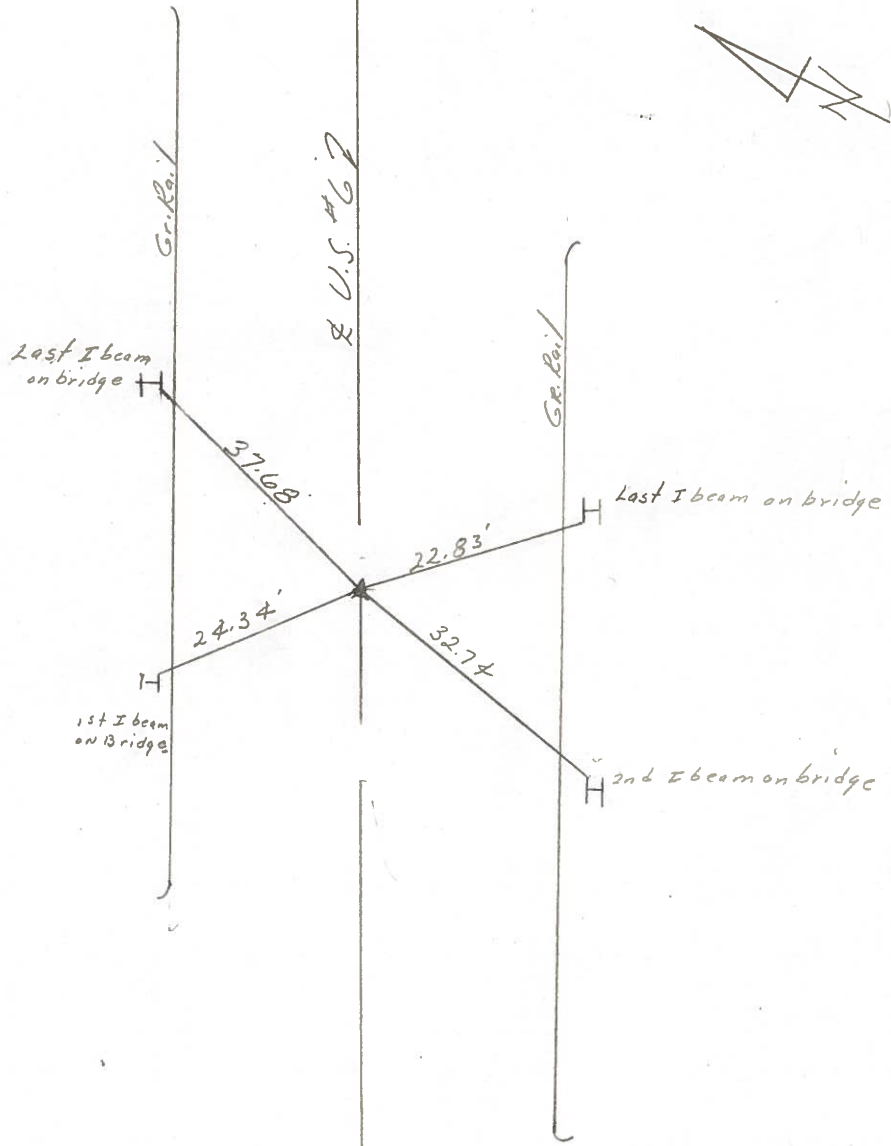


STA 56+00

P.I. A = 00°10' Lt (Plan)

1602+11.93

set small sq headed spike  
from bridge plans - set P.K. &  
washer 9/26/84



PERSONNEL	TITLE	PERSONNEL	TITLE	COUNTY	Sandusky	DATE drawn	8/4/75
Cronin		Schneider		S. R.	#6	WEATHER	sunny
Ash		Mosser		SEC.	H-1 - Fremont - East	TEMP.	78°
Ripple		Barbour					
Geyman							

DESCRIPTION Ties for Control Points JOB NO. \_\_\_\_\_

