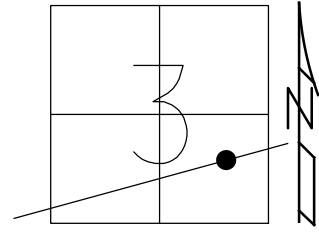


O.D.O.T. DISTRICT 2 SURVEY OFFICE (USE ONLY)

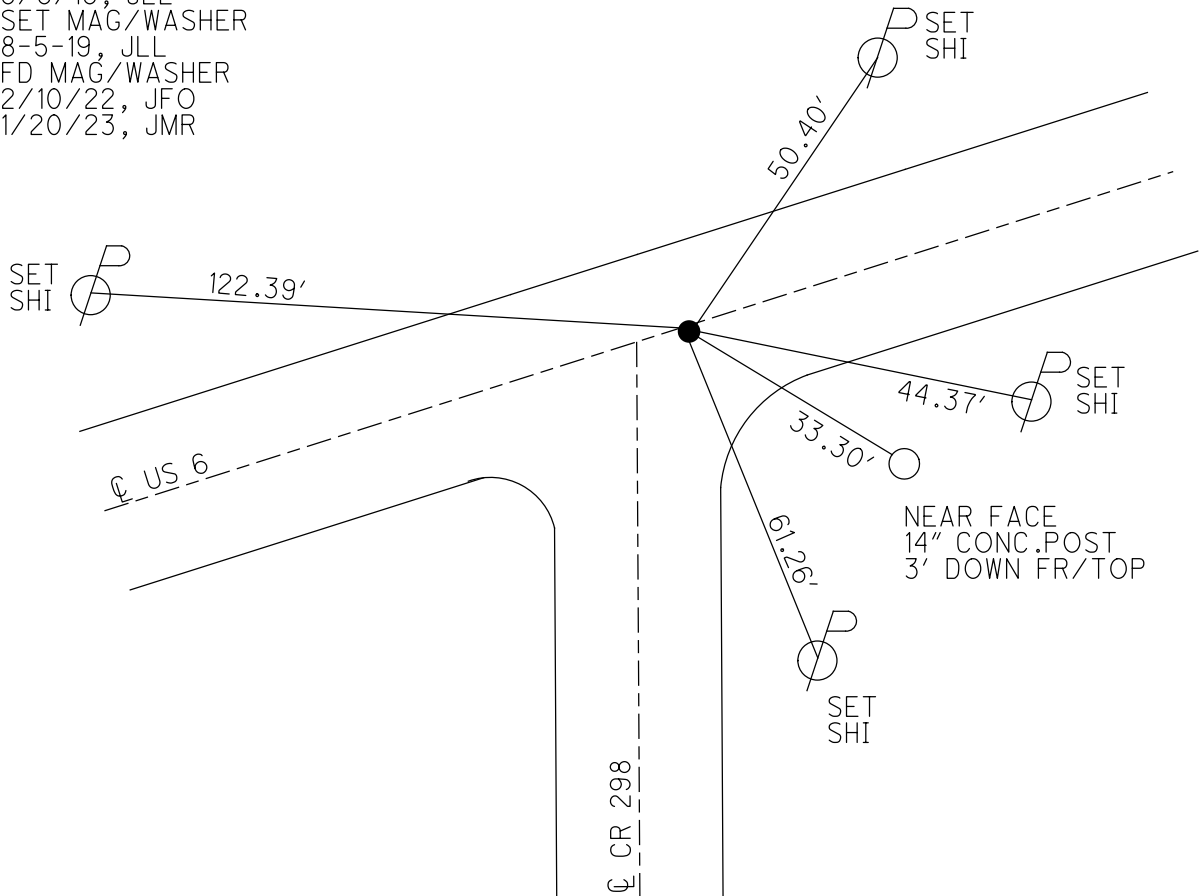
| | | |
|-----------------------|----------------------------|------------------------------|
| PERSONNEL | REFERENCE NO. <u>51 AA</u> | SHEET <u>27</u> OF <u>34</u> |
| NOTES <u>LEU</u> | DATE <u>8/8/18</u> | ROUTE <u>US 6</u> |
| H.C. <u>LEU</u> | WEATHER <u>CLOUDY</u> | COUNTY <u>SANDUSKY</u> |
| R.C. <u>HAGEMeyer</u> | TEMP. <u>75°</u> | TOWNSHIP <u>TOWNSEND</u> |
| DWG BY <u>AUBLE</u> | PID <u>PAVETRAIN</u> | SECTION <u>3</u> |
| | | T <u>5</u> N R <u>17</u> E |

TYPE MONUMENT MAG/WASHER
 ON SURFACE - ~~BELOW~~ ON
 OFFSET \odot PAVEMENT 0.4' LT : ~~RT~~
- TO - EDGE PAVEMENT 4' E. \odot S.
 STATION: 1614+19 \pm



HORZ.DATUM: NAD83 (2011) GEOID: 2012A
 GRID: NORTHING: 639024.160 EASTING: 1863641.387

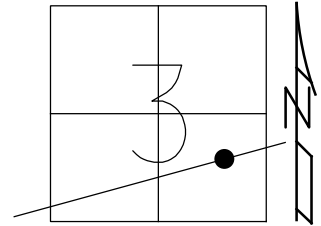
RECORD:
 FD P.K.NAIL
 REFAA51
 8/8/18, JLL
 SET MAG/WASHER
 8-5-19, JLL
 FD MAG/WASHER
 2/10/22, JFO
 1/20/23, JMR



O.D.O.T. DISTRICT 2 SURVEY OFFICE (USE ONLY)

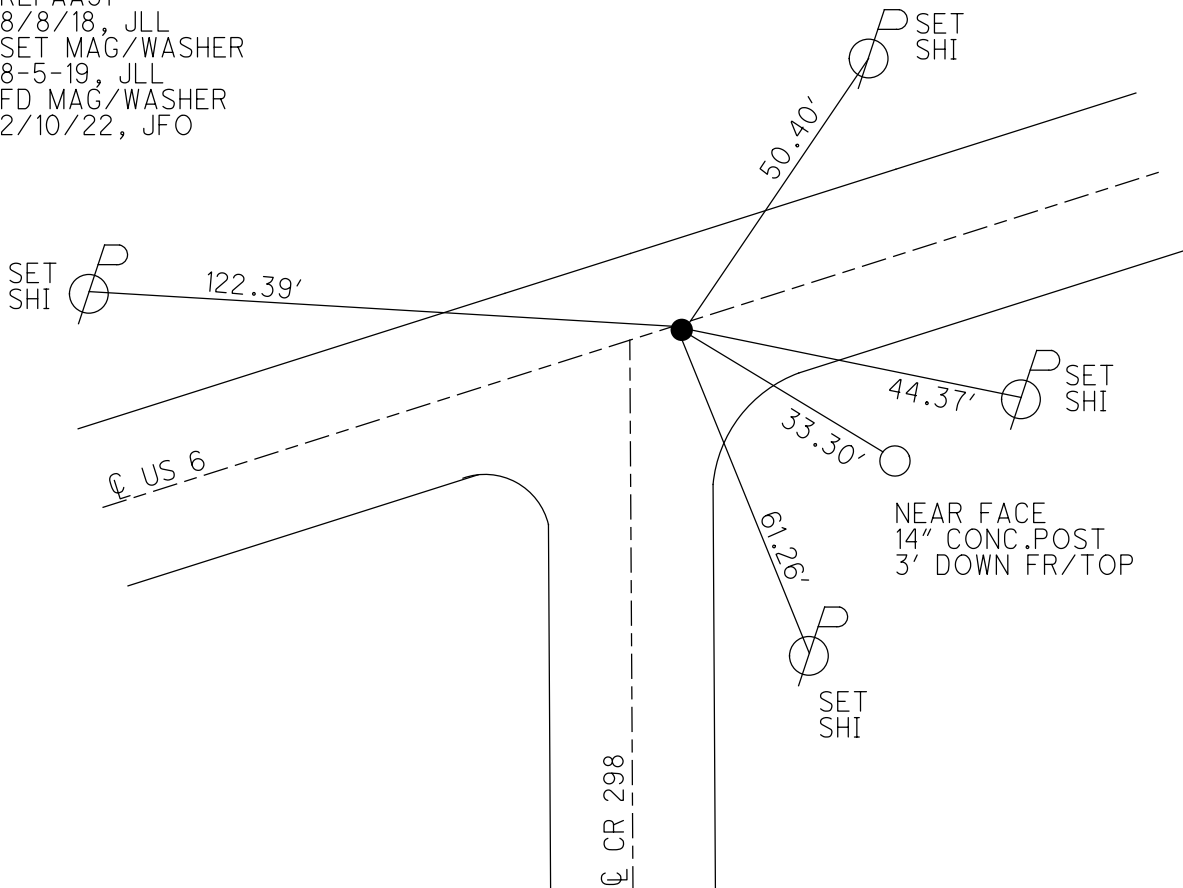
PERSONNEL _____ REFERENCE NO. 51 AA SHEET 27 OF 34
 NOTES LEU DATE 8/8/18 ROUTE US 6
 H.C. LEU WEATHER CLOUDY COUNTY SANDUSKY
 R.C. HAGEMEYER TEMP. 75° TOWNSHIP TOWNSEND
 DWG BY AUBLE PID 95769 SECTION 3
 T 5 N R 17 E

TYPE MONUMENT MAG/WASHER
 ON SURFACE - ~~BELOW~~ ON
 OFFSET C PAVEMENT 0.4' LT : ~~RT~~
- TO - EDGE PAVEMENT 4' E. C S.
 STATION: 1614+19 ±



HORZ. DATUM: NAD83 (2011) GEOID: 2012A
 GRID: NORTHING: 639024.160 EASTING: 1863641.387

RECORD:
 FD P.K. NAIL
 REFAA51
 8/8/18, JLL
 SET MAG/WASHER
 8-5-19, JLL
 FD MAG/WASHER
 2/10/22, JFO

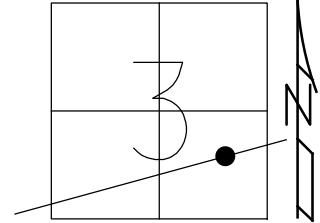


O.D.O.T. DISTRICT 2 SURVEY OFFICE (USE ONLY)

| | | |
|-----------------------|----------------------------|------------------------------|
| PERSONNEL | REFERENCE NO. <u>51 AA</u> | SHEET <u>27</u> OF <u>34</u> |
| NOTES <u>LEU</u> | DATE <u>8/8/18</u> | ROUTE <u>US 6</u> |
| H.C. <u>LEU</u> | WEATHER <u>CLOUDY</u> | COUNTY <u>SANDUSKY</u> |
| R.C. <u>HAGEMeyer</u> | TEMP. <u>75°</u> | TOWNSHIP <u>TOWNSEND</u> |
| DWG BY <u>AUBLE</u> | PID <u>95769</u> | SECTION <u>3</u> |
| | | T <u>5</u> N R <u>17</u> E |

TYPE MONUMENT MAG/WASHER
 ON SURFACE - ~~BELOW~~ ON
 OFFSET \varnothing PAVEMENT 0.4' LT : RT
- TO - EDGE PAVEMENT 4' E. \varnothing S.
 STATION: 1614+19 ±

HORZ. DATUM: NAD83 (2011) GEOID: 2012A
 GRID: NORTHING: 639024.160 EASTING: 1863641.387



RECORD:
 FD P.K.NAIL
 REFAA51
 8/8/18, JLL
 SET MAG/WASHER
 8-5-19, JLL

