

O.D.O.T. DISTRICT 2 SURVEY OFFICE (USE ONLY)

PERSONNEL

REFERENCE NO. 51 A

SHEET 28 OF 34

NOTES LEU

DATE 8/8/18

ROUTE US 6

H.C. LEU

WEATHER CLOUDY

COUNTY SANDUSKY

R.C. HAGEMEYER

TEMP. 75°

TOWNSHIP TOWNSEND

DWG BY AUBLE

PID PAVETRAIN

SECTION 2

T 5 N R 17 E

TYPE MONUMENT MAG/WASHER

ON SURFACE - ~~BELOW~~ ON

OFFSET  $\odot$  PAVEMENT 0.5' ~~LT~~ : RT

13' TO LT EDGE PAVEMENT

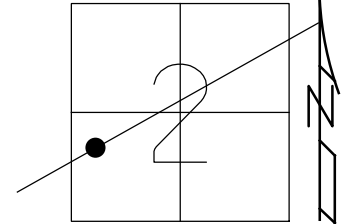
STATION: 1629+81

HORIZ.DATUM: NAD83 (2011)

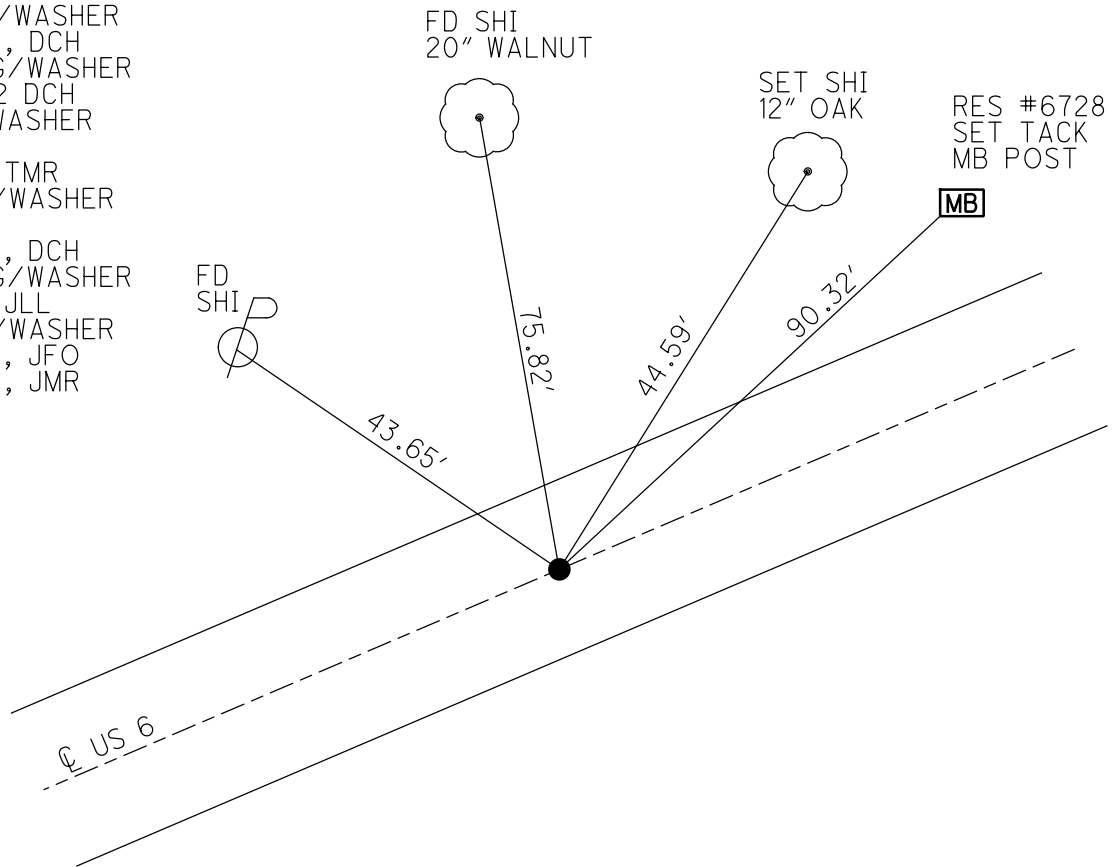
GEOID: 2012A

GRID: NORTHING: 639640.754

EASTING: 1865066.673



- RECORD: P.I.  
 $\Delta = 00^{\circ} 09' LT$  (PLAN)  
 STA. 85+63.80  
 PREVIOUS MONUMENTS:  
 P.K./WASHER  
 BOAT SPIKE/WASHER  
 FD P.K./WASHER  
 3/16/02, DCH  
 SET MAG/WASHER  
 9/26/02 DCH  
 FD PK/WASHER  
 REFA51  
 3-5-14, TMR  
 FD MAG/WASHER  
 REFA51  
 11/23/17, DCH  
 SET MAG/WASHER  
 8-5-19, JLL  
 FD MAG/WASHER  
 2/10/22, JFO  
 1/20/23, JMR

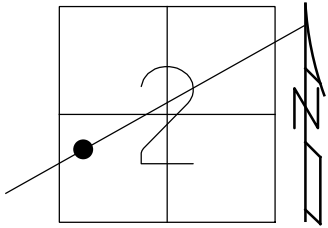


O.D.O.T. DISTRICT 2 SURVEY OFFICE (USE ONLY)

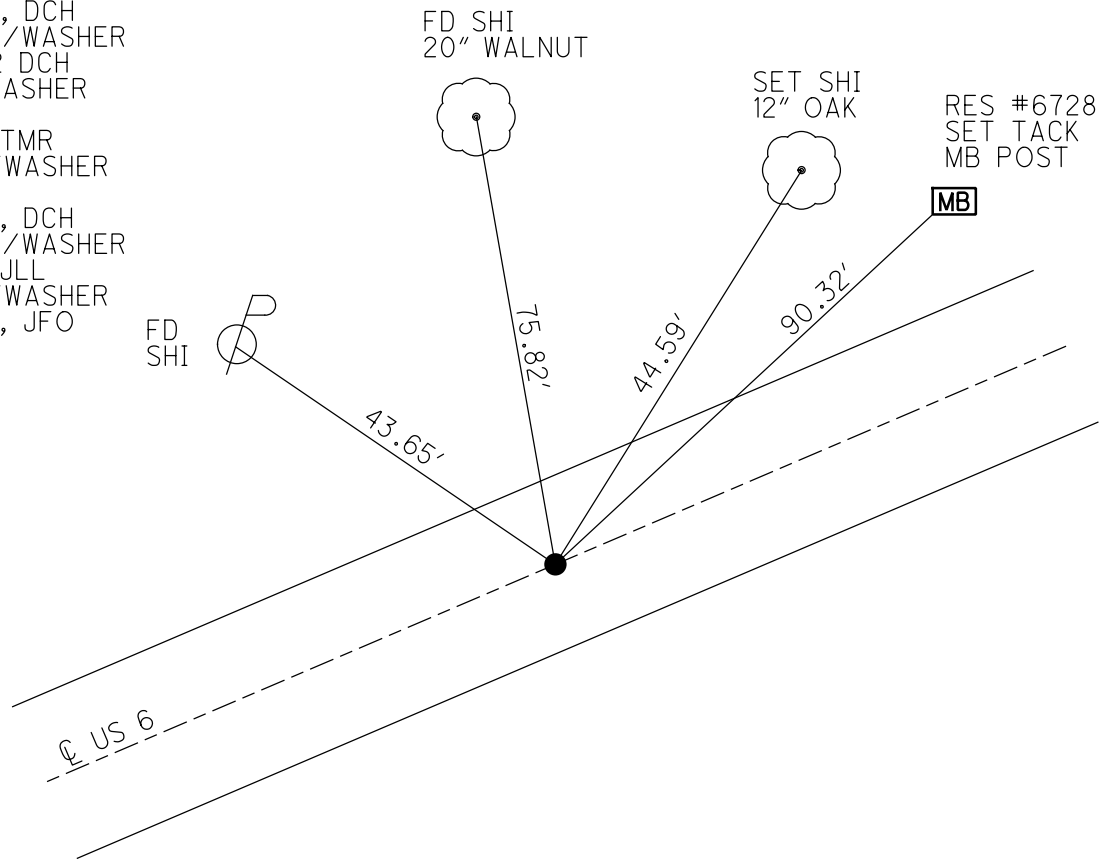
PERSONNEL \_\_\_\_\_ REFERENCE NO. 51 A SHEET 28 OF 34  
 NOTES LEU DATE 8/8/18 ROUTE US 6  
 H.C. LEU WEATHER CLOUDY COUNTY SANDUSKY  
 R.C. HAGEMeyer TEMP. 75° TOWNSHIP TOWNSEND  
 DWG BY AUBLE PID 95769 SECTION 2  
 T 5 N R 17 E

TYPE MONUMENT MAG/WASHER  
 ON SURFACE - ~~BELOW~~ ON  
 OFFSET  $\varnothing$  PAVEMENT 0.5'  $\perp$  : RT  
13' TO LT EDGE PAVEMENT  
 STATION: 1629+81

HORZ.DATUM: NAD83 (2011) GEOID: 2012A  
 GRID: NORTHING: 639640.754 EASTING: 1865066.673



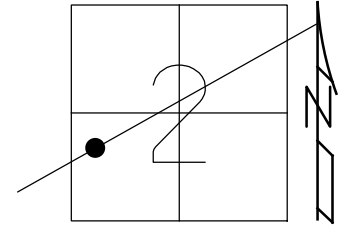
RECORD: P.I.  
 $\Delta = 00^\circ 09' \text{ LT (PLAN)}$   
 STA. 85+63.80  
 PREVIOUS MONUMENTS:  
 P.K./WASHER  
 BOAT SPIKE/WASHER  
 FD P.K./WASHER  
 3/16/02, DCH  
 SET MAG/WASHER  
 9/26/02 DCH  
 FD PK/WASHER  
 REFA51  
 3-5-14, TMR  
 FD MAG/WASHER  
 REFA51  
 11/23/17, DCH  
 SET MAG/WASHER  
 8-5-19, JLL  
 FD MAG/WASHER  
 2/10/22, JFO



O.D.O.T. DISTRICT 2 SURVEY OFFICE (USE ONLY)

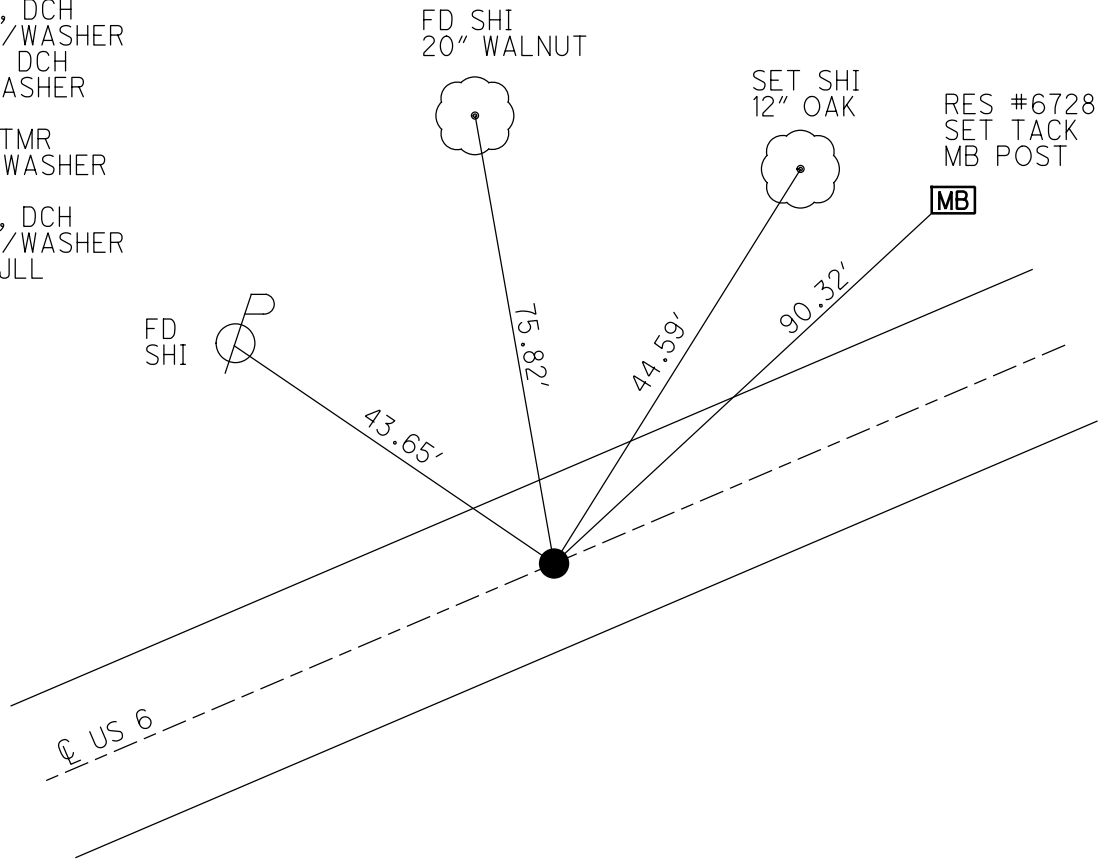
PERSONNEL	REFERENCE NO. <u>51 A</u>	SHEET <u>28</u> OF <u>34</u>
NOTES <u>LEU</u>	DATE <u>8/8/18</u>	ROUTE <u>US 6</u>
H.C. <u>LEU</u>	WEATHER <u>CLOUDY</u>	COUNTY <u>SANDUSKY</u>
R.C. <u>HAGEMEYER</u>	TEMP. <u>75°</u>	TOWNSHIP <u>TOWNSEND</u>
DWG BY <u>AUBLE</u>	PID <u>95769</u>	SECTION <u>2</u>
		T <u>5</u> N R <u>17</u> E

TYPE MONUMENT MAG/WASHER  
 ON SURFACE - ~~BELOW~~ ON  
 OFFSET  $\odot$  PAVEMENT 0.5' ~~LT~~ : RT  
13' TO LT EDGE PAVEMENT  
 STATION: 1629+81



HORZ. DATUM: NAD83 (2011) GEOID: 2012A  
 GRID: NORTHING: 639640.754 EASTING: 1865066.673

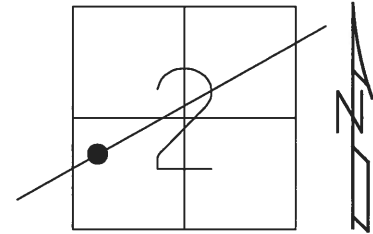
RECORD: P.I.  
 $\Delta = 00^\circ 09' \text{ LT (PLAN)}$   
 STA. .85+63.80  
 PREVIOUS MONUMENTS:  
 P.K./WASHER  
 BOAT SPIKE/WASHER  
 FD P.K./WASHER  
 3/16/02, DCH  
 SET MAG/WASHER  
 9/26/02 DCH  
 FD PK/WASHER  
 REFA51  
 3-5-14, TMR  
 FD MAG/WASHER  
 REFA51  
 11/23/17, DCH  
 SET MAG/WASHER  
 8-5-19, JLL



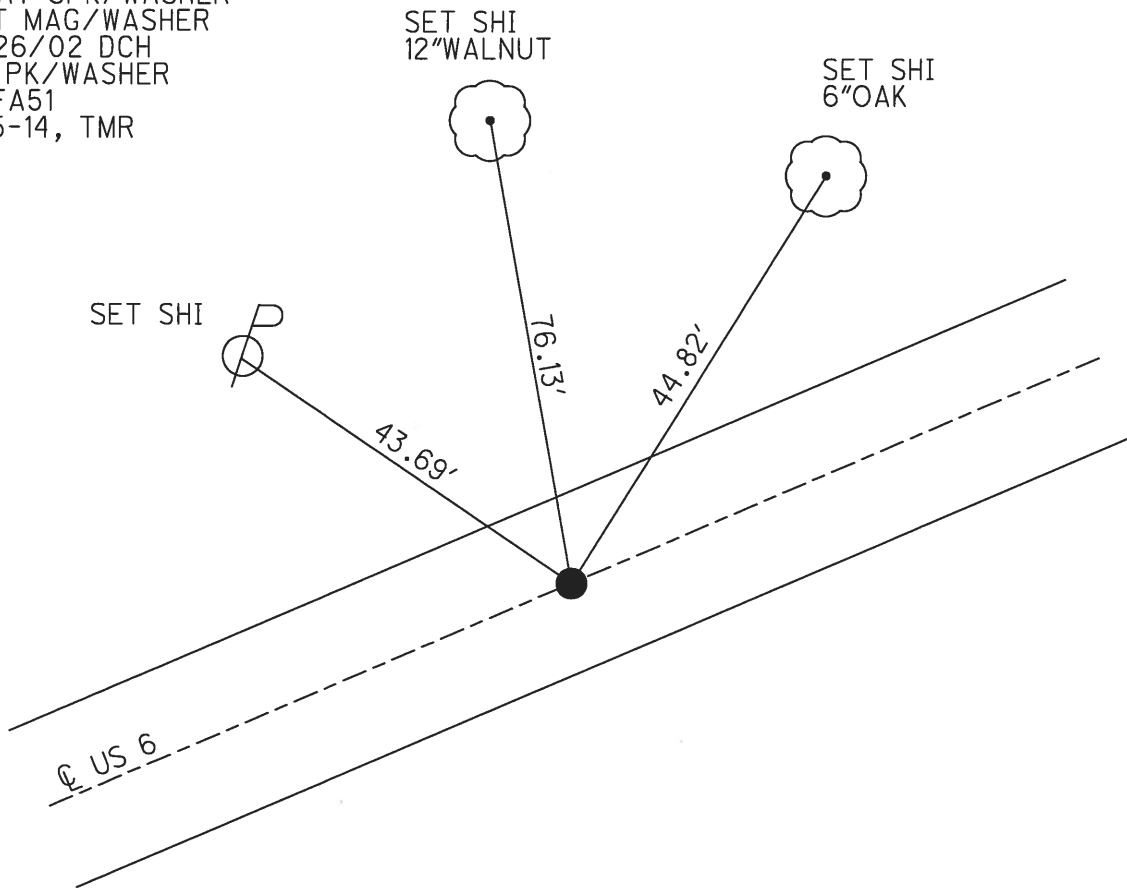
**O.D.O.T. DISTRICT 2 SURVEY OFFICE (USE ONLY)**

PERSONNEL	REFERENCE NO.	51 A	SHEET	25	OF	31
NOTES	ROUSOS	DATE	03/16/02	ROUTE	US 6	
H.C.	VAN DUSEN	WEATHER	WINDY	COUNTY	SANDUSKY	
R.C.	MOSSER	TEMP.	28°	TOWNSHIP	TOWNSEND	
	HOMAN			SECTION	2	
				T. 5 N	R. 17 E	

TYPE MONUMENT PK/WASHER  
 ON SURFACE - ~~BELOW~~ ON  
~~LEFT~~ - ℄ PAV'T - RIGHT 0.6'  
13' TO LT EDGE PAVEMENT  
 S.L.M. 1631+81.43  
 GRID: NORTHING: 639640.734 EASTING: 1865066.688



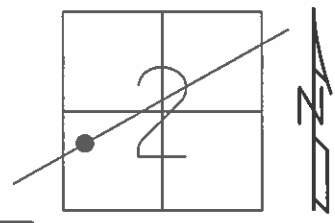
RECORD:  
 PI Δ=00° 09' LT (PLAN)  
 OLD STA = 85+63.80  
 PK/WASHER  
 BOAT SPK/WASHER  
 SET MAG/WASHER  
 9/26/02 DCH  
 FD PK/WASHER  
 REFA51  
 3-5-14, TMR



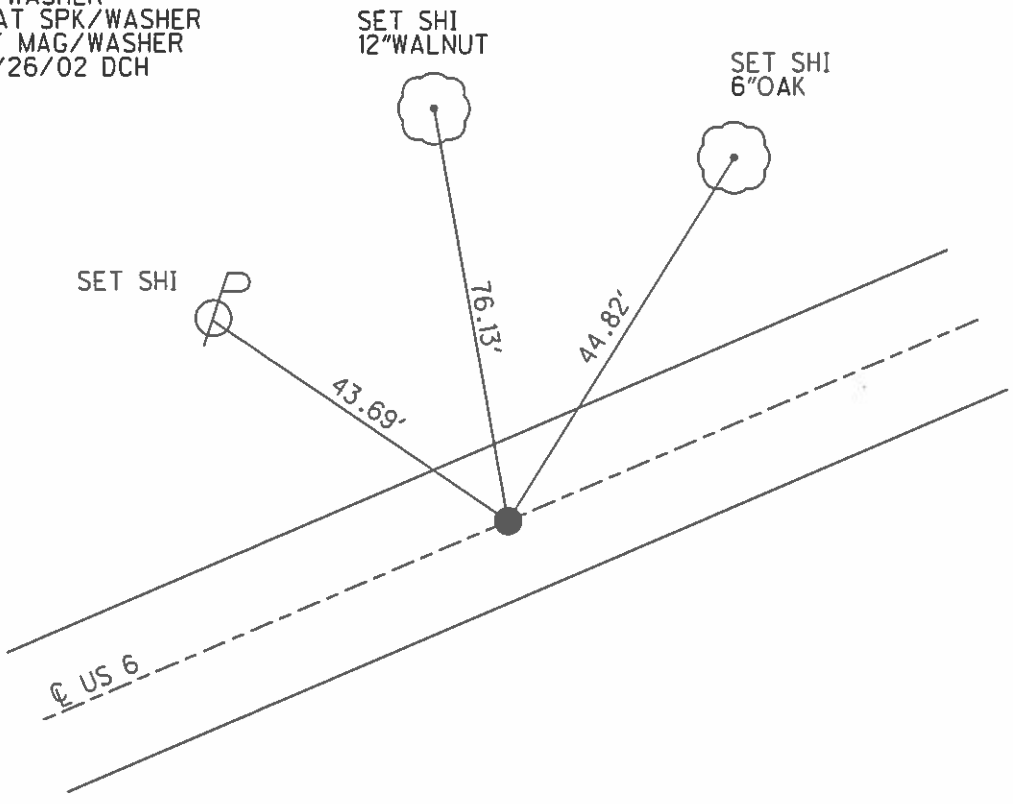
**O.D.O.T. DISTRICT 2 SURVEY OFFICE (USE ONLY)**

PERSONNEL \_\_\_\_\_ REFERENCE NO. 51 A SHEET 25 OF 31  
 NOTES ROUSOS DATE 03/16/02 ROUTE US 6  
 H.C. VAN DUSEN WEATHER WINDY COUNTY SANDUSKY  
 R.C. MOSSER TEMP. 28° TOWNSHIP TOWNSEND  
 \_\_\_\_\_ SECTION 2  
 \_\_\_\_\_ T 5 N R 17 E

TYPE MONUMENT \_\_\_\_\_ PK/WASHER \_\_\_\_\_  
 ON SURFACE - ~~BELOW~~ \_\_\_\_\_ ON \_\_\_\_\_  
~~LEFT~~ - CL PAV'T - RIGHT \_\_\_\_\_ 0.6' \_\_\_\_\_  
 \_\_\_\_\_ 13' TO LT. EDGE PAVEMENT \_\_\_\_\_  
 S.L.M. \_\_\_\_\_ 1629+81 \_\_\_\_\_  
 GRID: NORTHING: \_\_\_\_\_ EASTING: \_\_\_\_\_



RECORD: PI  
 $\Delta=00^{\circ} 09' LT (PLAN)$   
 OLD STA = 85+63.80  
 PREVIOUS MONUMENTS  
 PK/WASHER  
 BOAT SPK/WASHER  
 SET MAG/WASHER  
 09/26/02 DCH



O.D.O.T. DISTRICT 2 SURVEY OFFICE

PERSONNEL \_\_\_\_\_

REFERENCE NO. \_\_\_\_\_

SHEET 33 OF 39

NOTES RIPPLE

H.C. BARBOWE

DATE 10-3-1991

ROUTE 6

R.C. GEYMAN

WEATHER -

COUNTY SANDUSKY

\_\_\_\_\_

TEMP. 74°

TOWNSHIP TOWNSEND

\_\_\_\_\_

SECTION 2

T5 N R 7 E

TYPE MONUMENT PK/WASHER

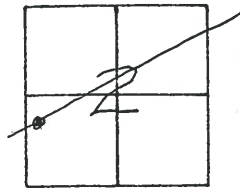
ON SURFACE - BELOW

LEFT - ☉ PAV'T. - RIGHT -

- TO - EDGE PAVEMENT

S.L.M. 1629+81

51A



P.I.

$\Delta = 00^{\circ} 09' \text{ LT. (PLAN)}$

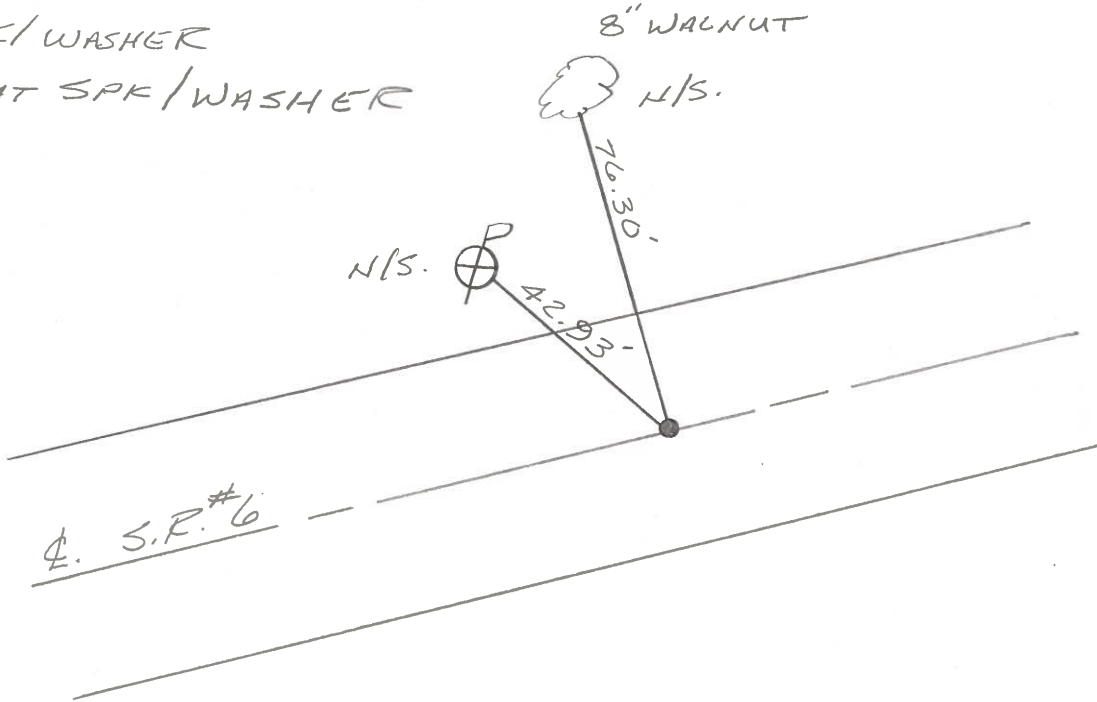
OLD STA - 85+63.80

PREVIOUS MONUMENTS

PK/WASHER

BOAT SPK/WASHER

8" WALNUT



4. S.P. #6

Q.D.O.T. DISTRICT 2 SURVEY OFFICE

SHEET \_\_\_\_\_ OF \_\_\_\_\_

County Sandusky S. R. U.S. #6

Date 9/26/84

Township Townsend

Weather sunny - windy

Section 2

Temp. 78°

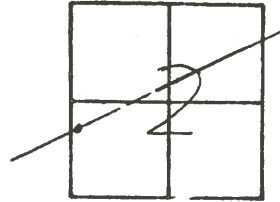
T5N, R12E

Personnel Cronin

Ripple

Geyman

Barbour



51A

4/03/91  
57°

10/03/91  
RIPPLE  
BARBOUR  
GEYMAN  
SET 7K NAIL WASHER  
TEMP 74°

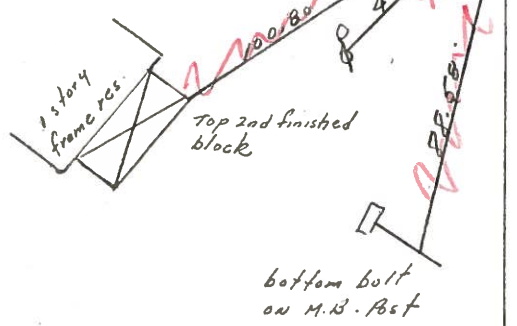
1629+81

P.I. Δ = 00°09' Lt. (Plan)

85+63.80

Set P.K. & washer atop boat  
spike & washer

WALNUT  
76.30  
8" TR



Q.D.O.T. DISTRICT 2 SURVEY OFFICE

SHEET \_\_\_\_\_ OF \_\_\_\_\_

County Sandusky S. R. U.S. #6

Date 9/26/84

Township Townsend

Weather sunny - windy

Section 2

Temp. 48°

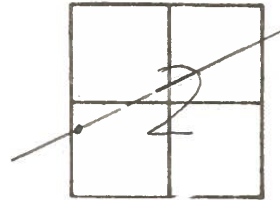
T5N, R12E

Personnel Cronin

Ripple

Geyman

Barbour



51A

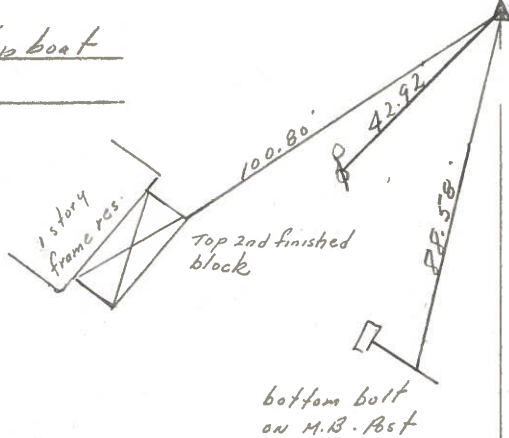
U.S. #6

P.I.  $\Delta = 00^{\circ}09'14''$  (Plan)

85 + 63.80

Set P.K. & washer at top boat

spike & washer



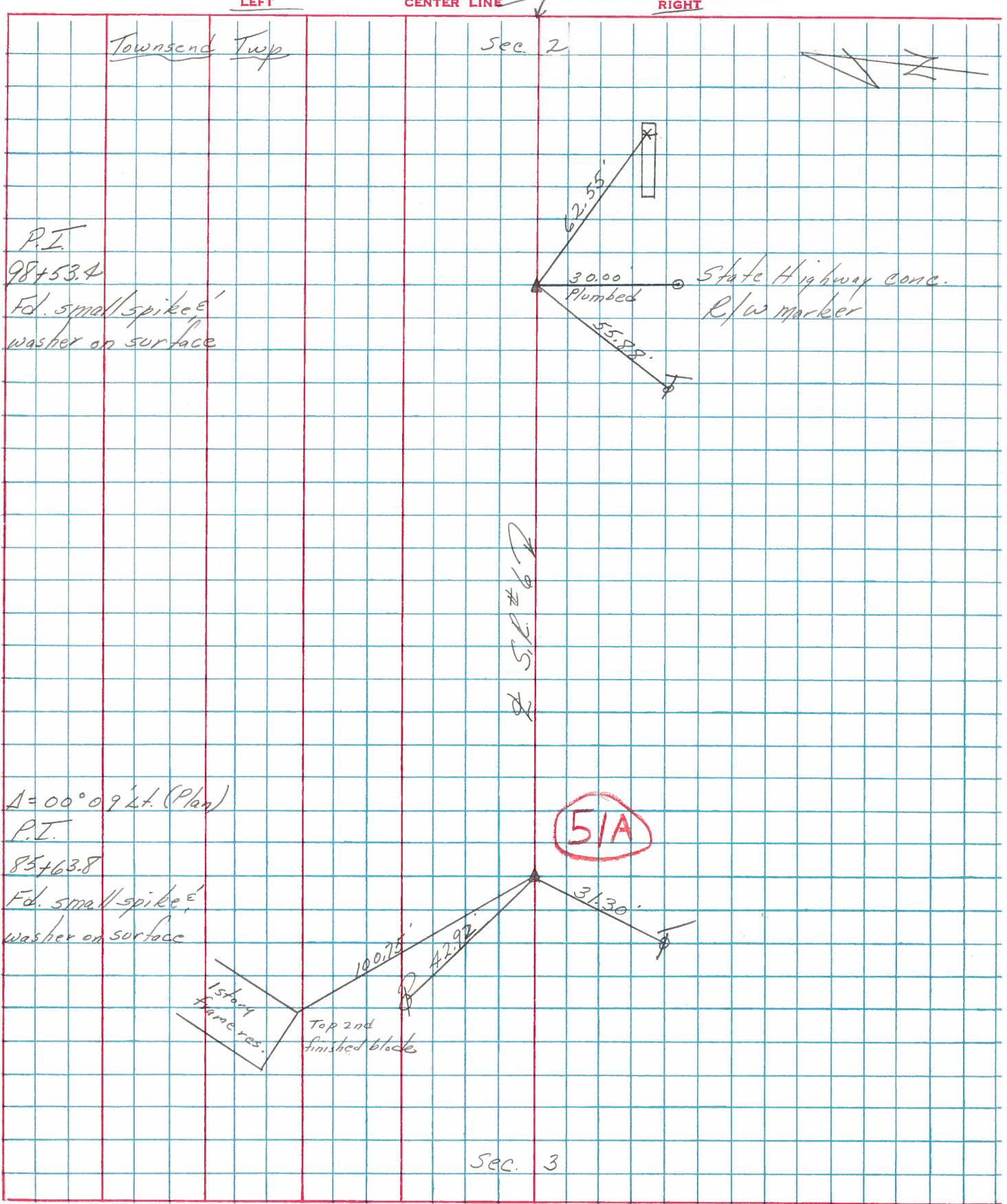


SHEET NO. 17  
 Trid 8/5/75  
 DATE drawn 8/4/75

PERSONNEL	TITLE	PERSONNEL	TITLE
<u>Cronin</u>		<u>Schneider</u>	
<u>Ash</u>		<u>Mosser</u>	
<u>Ripke</u>		<u>Barbour</u>	
<u>Geyman</u>			

COUNTY Sandusky  
 S. R. #6  
 SEC. H.I. - Fremont - East  
 WEATHER Sunny  
 TEMP. 78°

DESCRIPTION Ties for Control Points JOB NO. \_\_\_\_\_



P.I.  
 98+53.4  
 Fd. small spike & washer on surface

$\Delta = 00^\circ 09' 24''$  (Plan)  
 P.I.  
 85+63.8  
 Fd. small-spike & washer on surface

1st top frame res.  
 Top 2nd finished block

51A

Sec. 3

PERSONNEL schneider TITLE \_\_\_\_\_ PERSONNEL Potts TITLE \_\_\_\_\_  
Mosser \_\_\_\_\_ Barbour \_\_\_\_\_  
Redding \_\_\_\_\_

COUNTY Sandusky DATE Dec-1967  
 S. R. U.S. #6 WEATHER \_\_\_\_\_  
 SEC. Fremont-East TEMP. \_\_\_\_\_

DESCRIPTION Ties for Control Points JOB NO. \_\_\_\_\_

