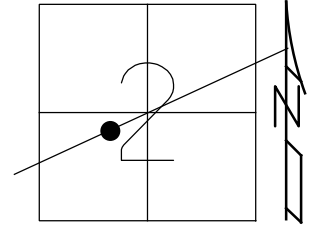


O.D.O.T. DISTRICT 2 SURVEY OFFICE (USE ONLY)

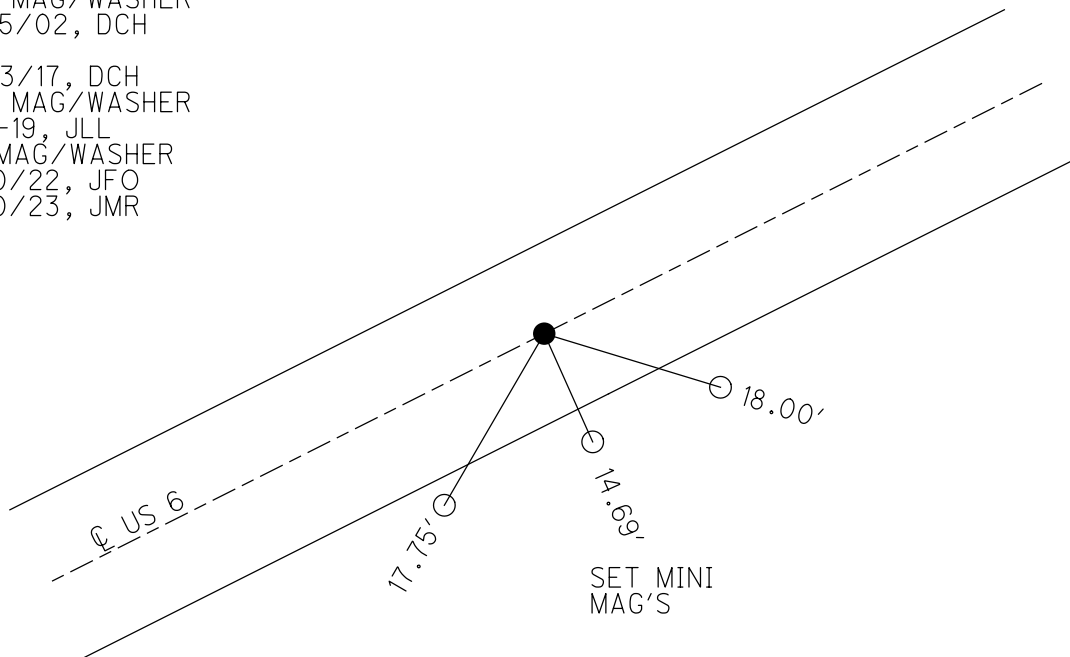
PERSONNEL _____ REFERENCE NO. 52 SHEET 29 OF 34
 NOTES LEU DATE 8/8/18 ROUTE US 6
 H.C. LEU WEATHER CLOUDY COUNTY SANDUSKY
 R.C. HAGEMeyer TEMP. 75° TOWNSHIP TOWNSEND
 DWG BY AUBLE PID PAVETRAIN SECTION 2
 T 5 N R 17 E

TYPE MONUMENT MAG/WASHER
 ON SURFACE - ~~BELOW~~ ON
 OFFSET Q PAVEMENT ON LT : RT
12.4' TO RT EDGE PAVEMENT
 STATION: 1642+72



HORZ.DATUM: NAD83 (2011) GEOID: NAVD88 2018
 GRID: NORTHING: 640156.370 EASTING: 1866248.935

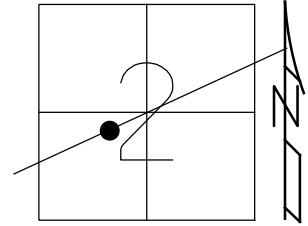
RECORD: P.I.
 $\Delta 0^\circ 11'$ RT
 STA. 98+53.4
 PREVIOUS MONUMENTS
 P.K./WASHER
 BOAT SPIKE/WASHER
 FD P.K./WASHER
 3/16/02, DCH
 SET MAG/WASHER
 9/25/02, DCH
 DNF
 11/23/17, DCH
 SET MAG/WASHER
 8-6-19, JLL
 FD MAG/WASHER
 2/10/22, JFO
 1/20/23, JMR



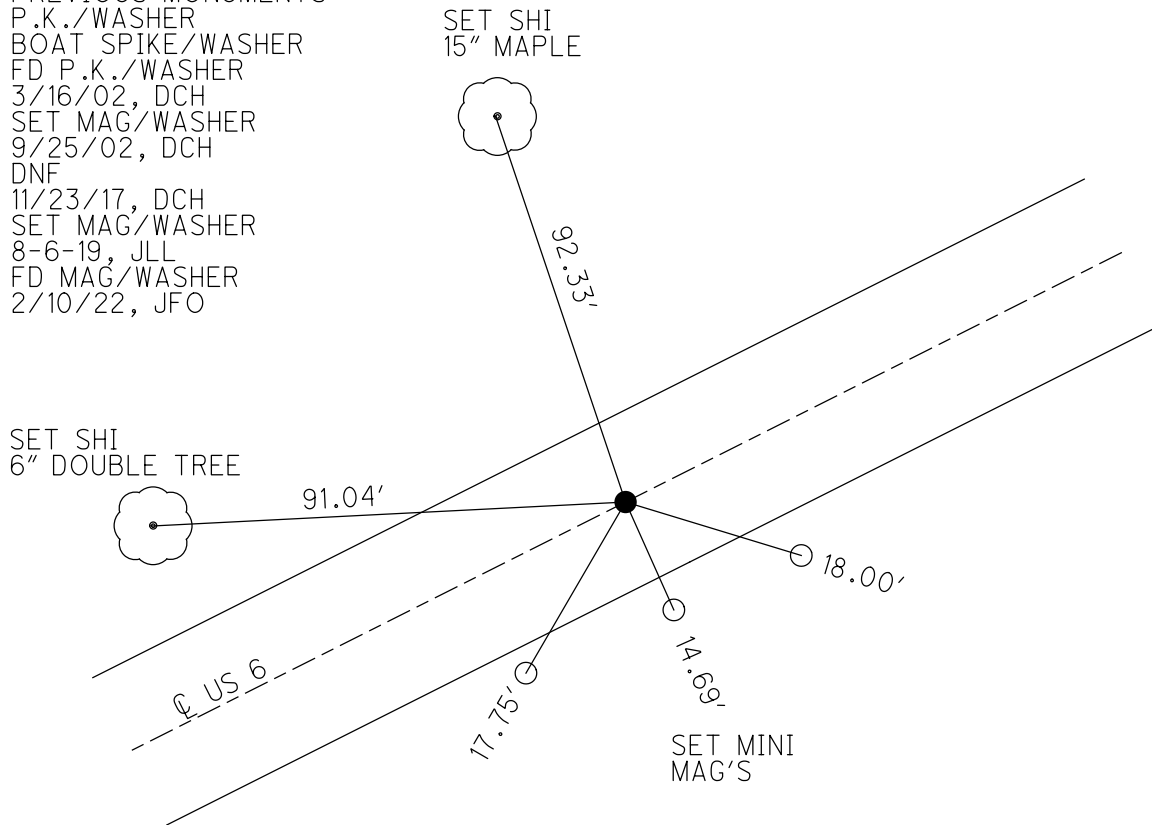
O.D.O.T. DISTRICT 2 SURVEY OFFICE (USE ONLY)

PERSONNEL _____ REFERENCE NO. 52 SHEET 29 OF 34
 NOTES LEU DATE 8/8/18 ROUTE US 6
 H.C. LEU WEATHER CLOUDY COUNTY SANDUSKY
 R.C. HAGEMeyer TEMP. 75° TOWNSHIP TOWNSEND
 DWG BY AUBLE PID 95769 SECTION 2
 T 5 N R 17 E

TYPE MONUMENT MAG/WASHER
 ON SURFACE - ~~BELOW~~ ON
 OFFSET Q PAVEMENT ON LT : RT
12.4' TO RT EDGE PAVEMENT
 STATION: 1642+72
 HORZ.DATUM: NAD83 (2011) GEOID: 2012A
 GRID: NORTHING: 640156.370 EASTING: 1866248.935



RECORD: P.I.
 $\Delta 0^\circ 11' RT$
 STA. 98+53.4
 PREVIOUS MONUMENTS
 P.K./WASHER
 BOAT SPIKE/WASHER
 FD P.K./WASHER
 3/16/02, DCH
 SET MAG/WASHER
 9/25/02, DCH
 DNF
 11/23/17, DCH
 SET MAG/WASHER
 8-6-19, JLL
 FD MAG/WASHER
 2/10/22, JFO



O.D.O.T. DISTRICT 2 SURVEY OFFICE (USE ONLY)

PERSONNEL

REFERENCE NO. 52

SHEET 29 OF 34

NOTES LEU
 H.C. LEU
 R.C. HAGEMeyer

DATE 8/8/18
 WEATHER CLOUDY
 TEMP. 75°

ROUTE US 6
 COUNTY SANDUSKY
 TOWNSHIP TOWNSEND
 SECTION 2
 T 5 N R 17 E

DWG BY AUBLE PID 95769

TYPE MONUMENT MAG/WASHER

ON SURFACE - ~~BELOW~~ ON

OFFSET Q PAVEMENT ON LT : RT

12.4' TO RT EDGE PAVEMENT

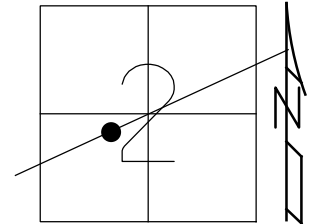
STATION: 1642+72

HORZ.DATUM: NAD83 (2011)

GEOID: 2012A

GRID: NORTHING: 640156.370

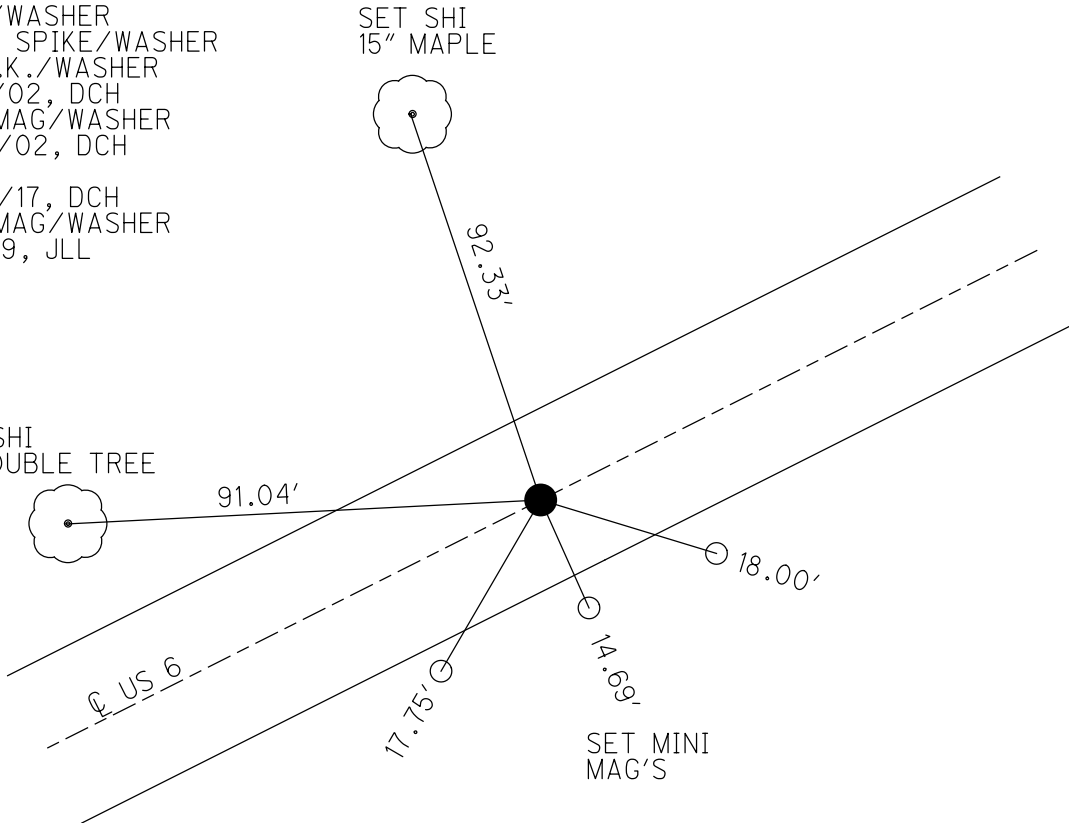
EASTING: 1866248.935



RECORD: P.I.
 Δ0° 11' RT
 STA. 98+53.4
 PREVIOUS MONUMENTS
 P.K./WASHER
 BOAT SPIKE/WASHER
 FD P.K./WASHER
 3/16/02, DCH
 SET MAG/WASHER
 9/25/02, DCH
 DNF
 11/23/17, DCH
 SET MAG/WASHER
 8-6-19, JLL

SET SHI
 6" DOUBLE TREE

SET SHI
 15" MAPLE

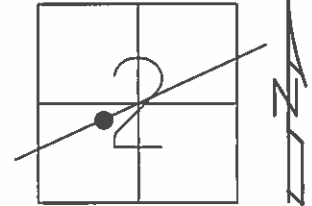


SET MINI
 MAG'S

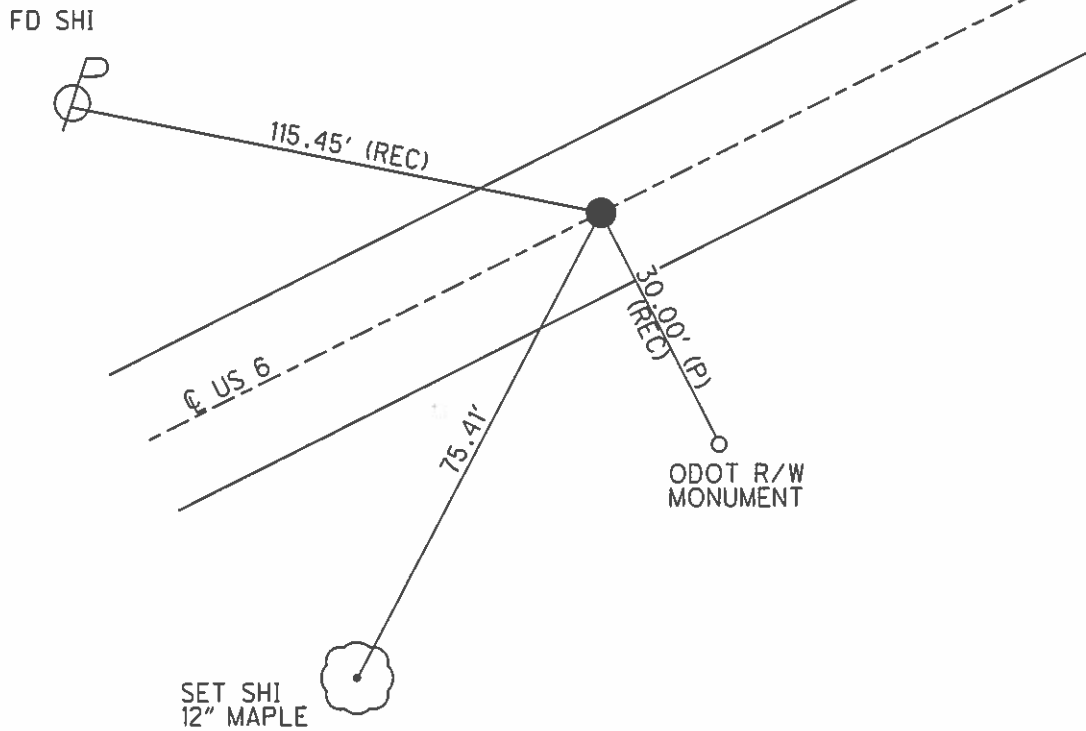
O.D.O.T. DISTRICT 2 SURVEY OFFICE (USE ONLY)

PERSONNEL	REFERENCE NO.	<u>52</u>	SHEET	<u>26</u>	OF	<u>31</u>
NOTES	<u>ROUSOS</u>	DATE	<u>03/16/02</u>	ROUTE	<u>US 6</u>	
H.C.	<u>VAN DUSEN</u>	WEATHER	<u>WINDY</u>	COUNTY	<u>SANDUSKY</u>	
R.C.	<u>MOSSER</u>	TEMP.	<u>28°</u>	TOWNSHIP	<u>TOWNSEND</u>	
	<u>HOMAN</u>			SECTION	<u>2</u>	
				T. <u>5</u> N	R. <u>17</u> E	

TYPE MONUMENT PK/WASHER
 ON SURFACE - ~~BELOW~~ ON
~~LEFT~~ - Q PAV'T - ~~RIGHT~~ ON
12.4' TO RT EDGE PAVEMENT
 S.L.M. 1642+72
 GRID: NORTHING: - EASTING: -



RECORD: PI
 0° 11' RT
 OLD STA = 98+53.4
 PREVIOUS MONUMENTS
 PK/WASHER
 BOAT SPK/WASHER
 SET MAG/WASHER
 09/25/02 DCH



O.D.O.T. DISTRICT 2 SURVEY OFFICE

PERSONNEL _____

REFERENCE NO. _____

SHEET 34 OF 39

NOTES FIPPLE

H.C. BARBOUR

DATE 10-3-1991

ROUTE 6

R.C. GEYMAN

WEATHER _____

COUNTY SANDUSKY

TEMP. 74°

TOWNSHIP TOWNSEND

SECTION 2

TS N R I T E

TYPE MONUMENT PK/WASHER

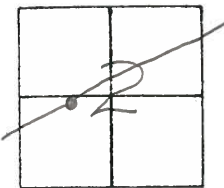
ON SURFACE - ~~BELOW~~ _____

LEFT - & PAW'T. - RIGHT _____

— TO — EDGE PAVEMENT _____

S.L.M. 1642+72

52



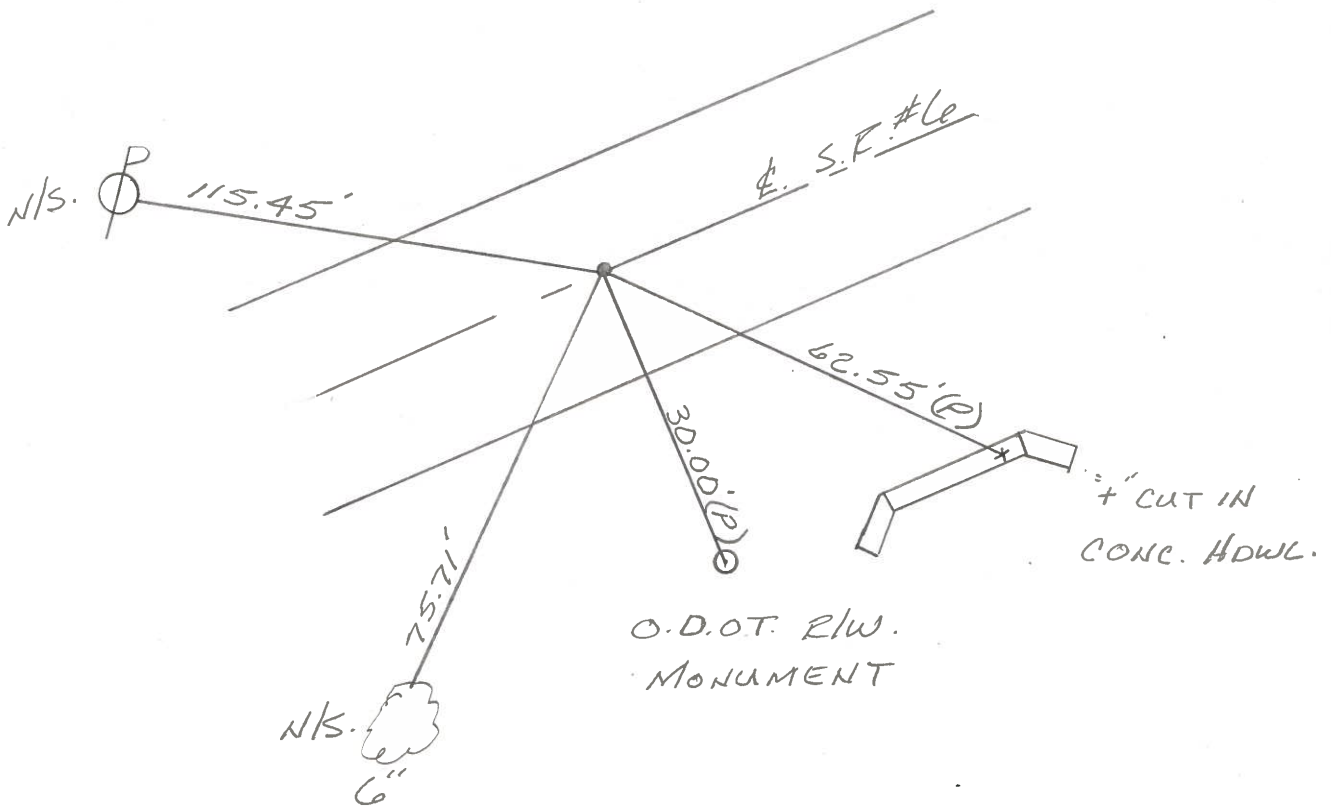
P.I.

OLD STA. = 98+53.4

PREVIOUS MONUMENTS

PK/WASHER

BOAT SPK/WASHER



Q.D.O.T. DISTRICT 2 SURVEY OFFICE

SHEET _____ OF _____

County Sandusky S. R. U.S. #6

Date 9/26/84

Township Townsend

Weather sunny - windy

Section 2

Temp. 50°

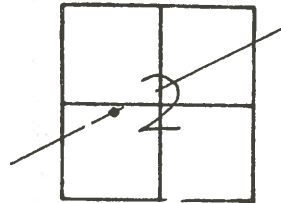
T5N, R17E

Personnel Cronin

Ripple

Geyman

Barbour



52

4/03/91 57°

1642+72

P.I.

98+53.4

set P.K. & washer atop
boat spike & washer

10/03/91

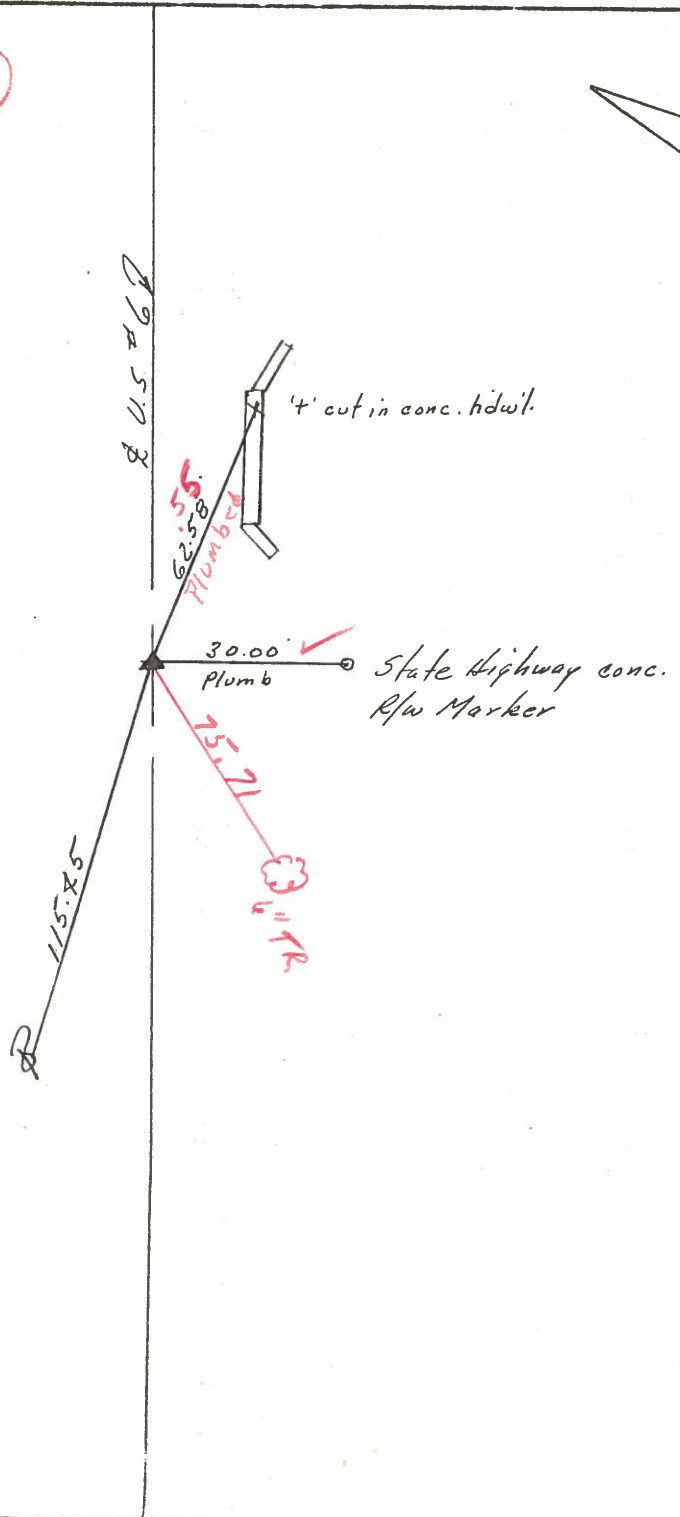
RIPPLE

BARBOUR

GEYMAN

SET P.K. NAIL & WASHER

Temp. 74°



Q.D.O.T. DISTRICT 2 SURVEY OFFICE

SHEET _____ OF _____

County Sandusky S.R.U.S. #46

Date 9/26/84

Township Townsend

Weather sunny - windy

Section 2

Temp. 50°

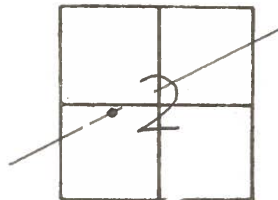
T5N, R17E

Personnel Cronin

Ripple

Geyman

Barbour



52



P.I.

98+53.4

set P.K. & washer atop

boat spike & washer

Q U.S. #67

62.58

4' cut in conc. hdwl.

30.00
Plumb

State Highway conc.
R/w Marker

115.75



PERSONNEL	TITLE	PERSONNEL	TITLE
Cronin		Schneider	
Ash		Mosser	
Ripple		Barbour	
Geyman			

COUNTY Sandusky

S. R. #6

WEATHER Sunny

SEC. H.I. - Fremont - East

TEMP. 78°

DESCRIPTION Ties for Control Points

JOB NO.

