

O.D.O.T. DISTRICT 2 SURVEY OFFICE (USE ONLY)

PERSONNEL

REFERENCE NO. 52 A

SHEET 30 OF 34

NOTES RHOADES

DATE 11/20/23

ROUTE US 6

H.C. AUBLE

WEATHER WINDY

COUNTY SANDUSKY

R.C. MILLER

TEMP. 41°

TOWNSHIP TOWNSEND

SECTION 2

DWG BY RHOADES

PID PAVETRAIN

T 5 N R 17 E

TYPE MONUMENT MAG/WASHER

ON SURFACE - ~~BELOW~~ ON

OFFSET Q PAVEMENT 2.0' LT : ~~RT~~

10.0' TO LT EDGE PAVEMENT

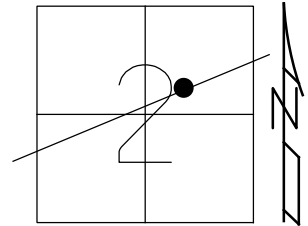
STATION: 1655+80

HORZ.DATUM: NAD83 (2011)

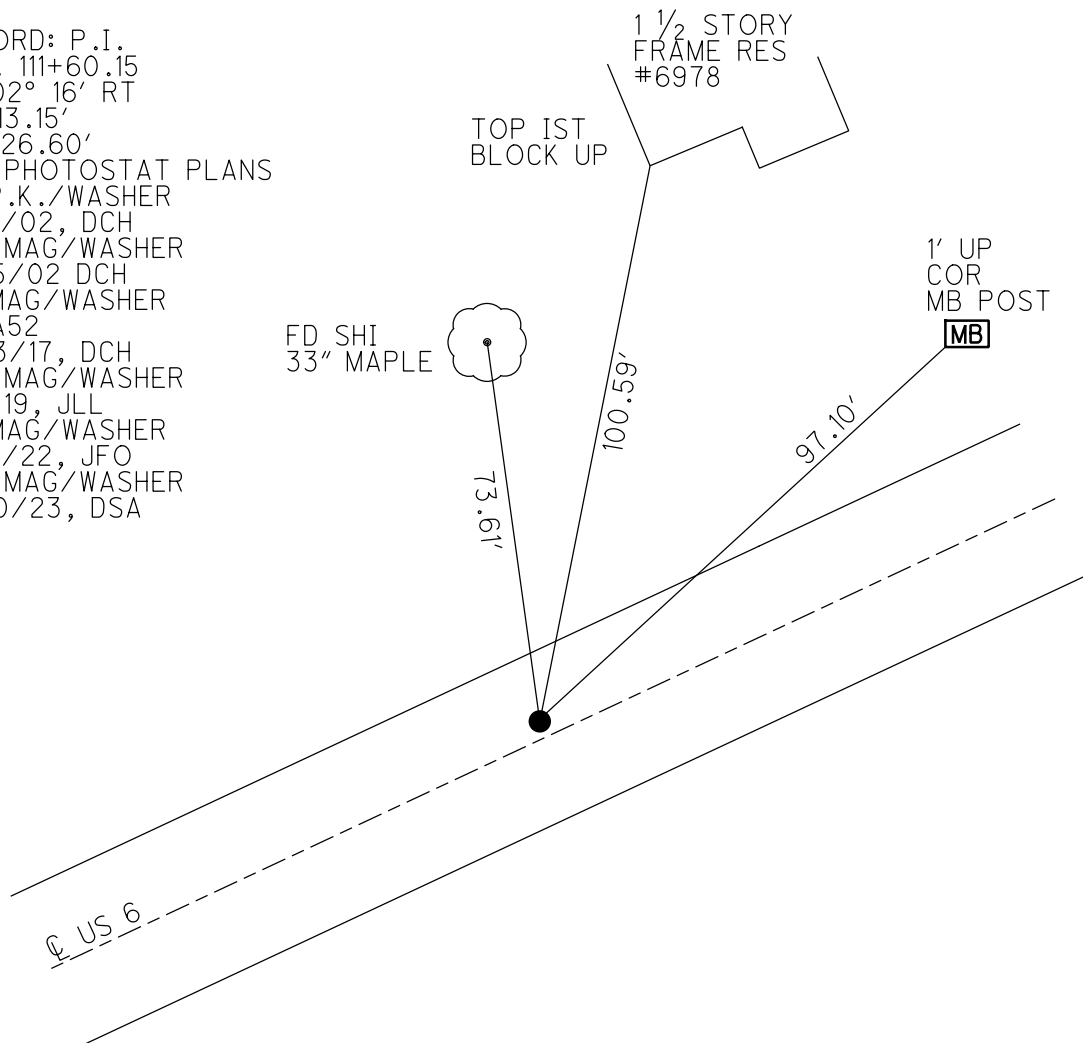
GEOID: NAVD88 2018

GRID: NORTHING: 640674.881

EASTING: 1867448.040



RECORD: P.I.
 STA. 111+60.15
 $\Delta = 02^\circ 16' RT$
 $T = 113.15'$
 $L = 226.60'$
 1931 PHOTOSTAT PLANS
 FD P.K./WASHER
 3/16/02, DCH
 SET MAG/WASHER
 9/25/02 DCH
 FD MAG/WASHER
 REFA52
 11/23/17, DCH
 SET MAG/WASHER
 8-5-19, JLL
 FD MAG/WASHER
 2/10/22, JFO
 SET MAG/WASHER
 11/20/23, DSA



O.D.O.T. DISTRICT 2 SURVEY OFFICE (USE ONLY)

PERSONNEL

REFERENCE NO. 52 A

SHEET 30 OF 34

NOTES LEU

DATE 8/8/18

ROUTE US 6

H.C. LEU

WEATHER CLOUDY

COUNTY SANDUSKY

R.C. HAGEMeyer

TEMP. 77°

TOWNSHIP TOWNSEND

DWG BY AUBLE PID 95769

SECTION 2

T 5 N R 17 E

TYPE MONUMENT P.K./WASHER

~~ON SURFACE~~ - BELOW 1 1/2"

OFFSET \oslash PAVEMENT 2.0' LT : ~~RT~~

10.0' TO LT EDGE PAVEMENT

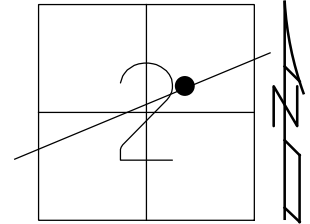
STATION: 1655+80

HORZ.DATUM: NAD83 (2011)

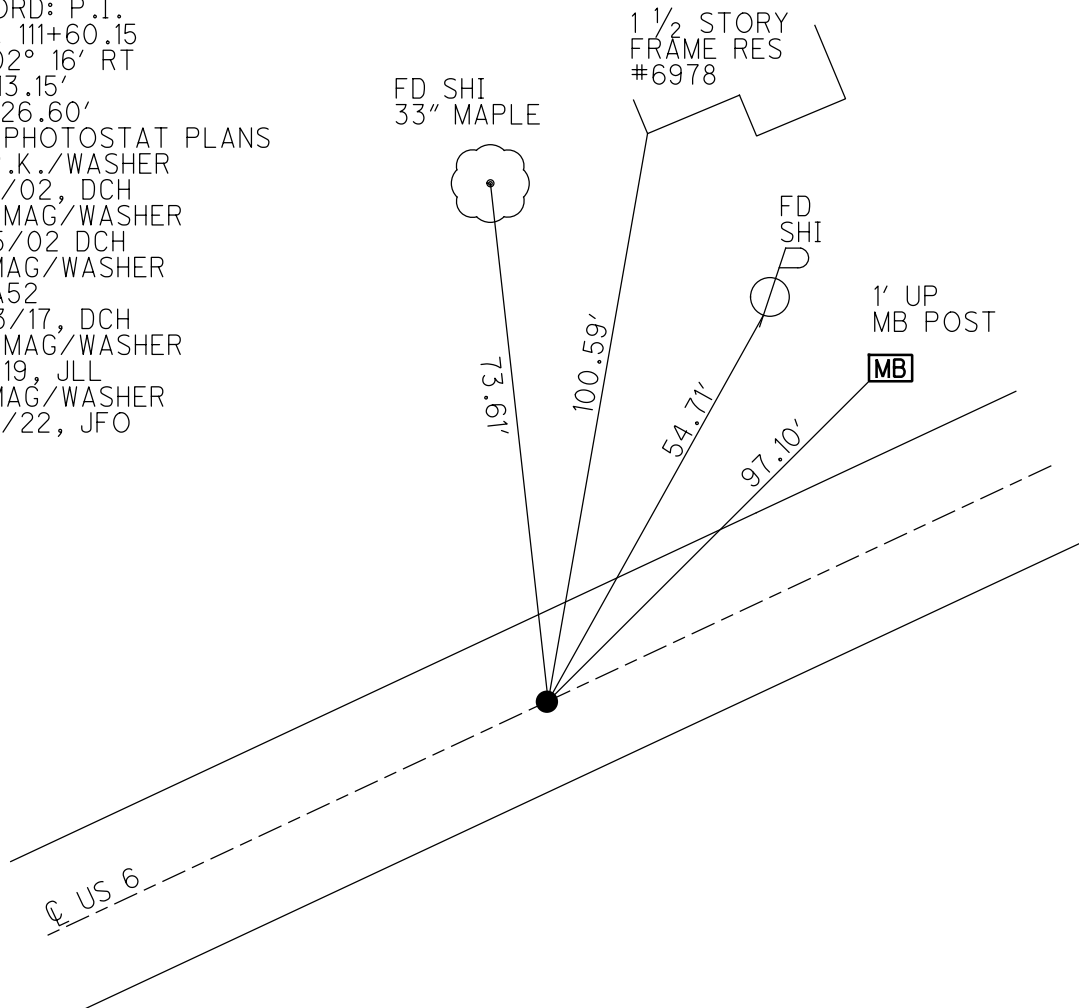
GEOID: 2012A

GRID: NORTHING: 640674.881

EASTING: 1867448.040



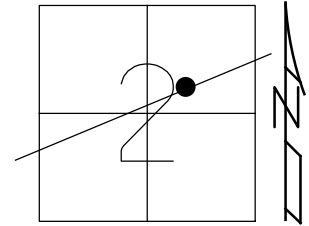
RECORD: P.I.
 STA. 111+60.15
 $\Delta = 02^\circ 16' RT$
 $T = 113.15'$
 $L = 226.60'$
 1931 PHOTOSTAT PLANS
 FD P.K./WASHER
 3/16/02, DCH
 SET MAG/WASHER
 9/25/02 DCH
 FD MAG/WASHER
 REFA52
 11/23/17, DCH
 SET MAG/WASHER
 8-5-19, JLL
 FD MAG/WASHER
 2/10/22, JFO



O.D.O.T. DISTRICT 2 SURVEY OFFICE (USE ONLY)

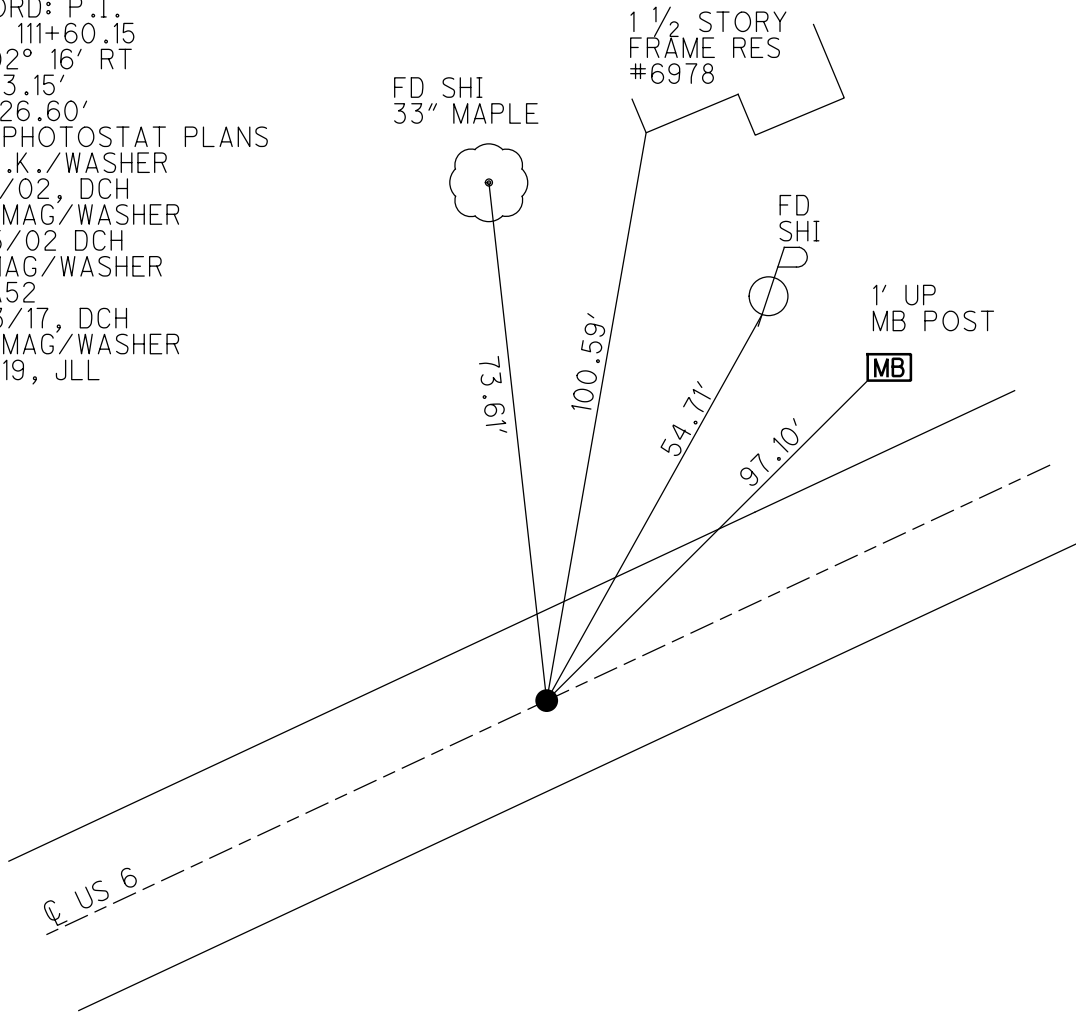
PERSONNEL	REFERENCE NO. <u>52 A</u>	SHEET <u>30</u> OF <u>34</u>
NOTES <u>LEU</u>	DATE <u>8/8/18</u>	ROUTE <u>US 6</u>
H.C. <u>LEU</u>	WEATHER <u>CLOUDY</u>	COUNTY <u>SANDUSKY</u>
R.C. <u>HAGEMEYER</u>	TEMP. <u>77°</u>	TOWNSHIP <u>TOWNSEND</u>
DWG BY <u>AUBLE</u>	PID <u>95769</u>	SECTION <u>2</u>
		T <u>5</u> N R <u>17</u> E

TYPE MONUMENT P.K./WASHER
~~ON SURFACE~~ - BELOW 1 1/2"
 OFFSET Q PAVEMENT 2.0' LT : ~~RT~~
10.0' TO LT EDGE PAVEMENT
 STATION: 1655+80



HORZ. DATUM: NAD83 (2011) GEOID: 2012A
 GRID: NORTHING: 640674.881 EASTING: 1867448.040

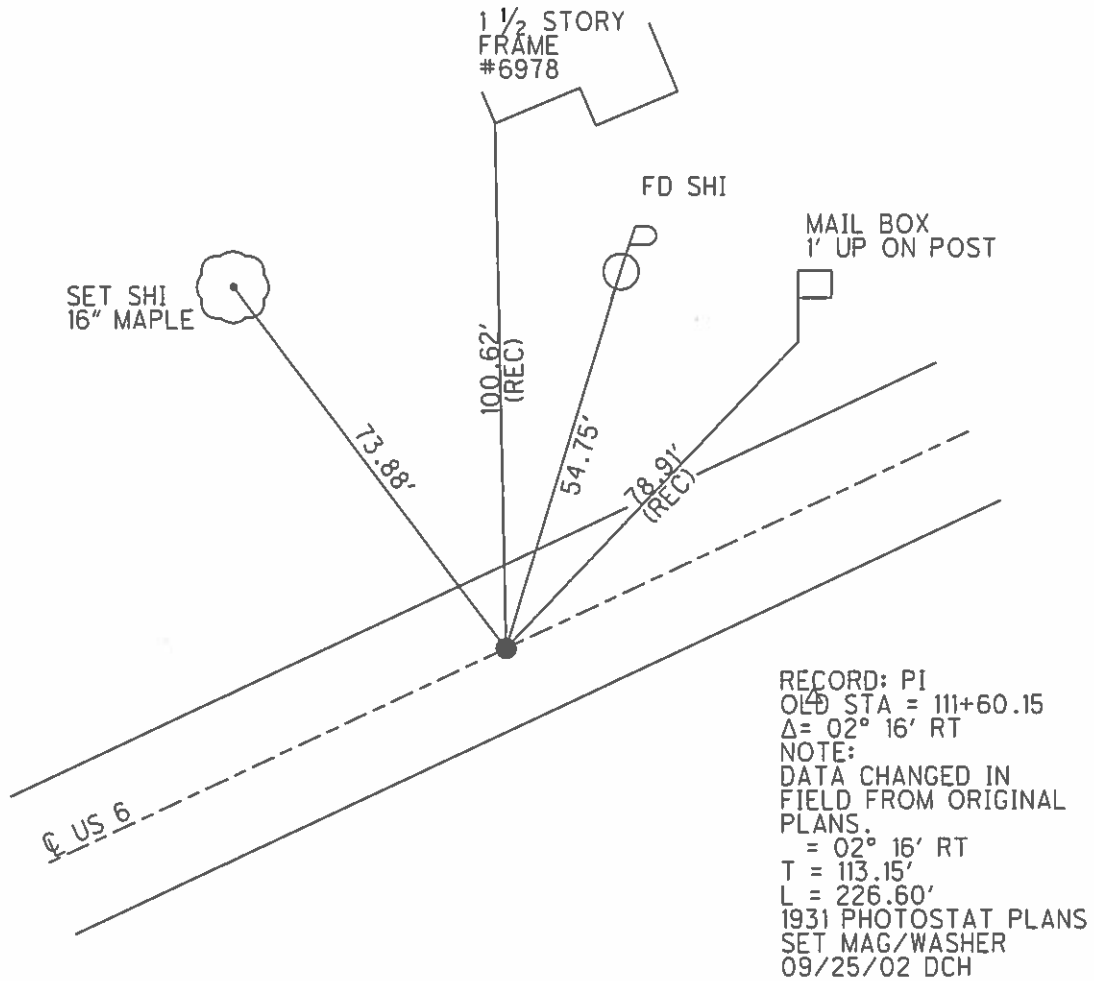
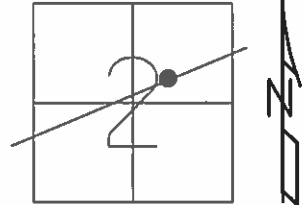
RECORD: P.I.
 STA. 111+60.15
 $\Delta = 02^\circ 16' RT$
 T = 113.15'
 L = 226.60'
 1931 PHOTOSTAT PLANS
 FD P.K./WASHER
 3/16/02, DCH
 SET MAG/WASHER
 9/25/02 DCH
 FD MAG/WASHER
 REFA52
 11/23/17, DCH
 SET MAG/WASHER
 8-5-19, JLL



O.D.O.T. DISTRICT 2 SURVEY OFFICE (USE ONLY)

PERSONNEL	REFERENCE NO.	52 A	SHEET	27 OF	31
NOTES	ROUSOS	DATE	03/16/02	ROUTE	US 6
H.C.	VAN DUSEN	WEATHER	WINDY	COUNTY	SANDUSKY
R.C.	MOSSER	TEMP.	28°	TOWNSHIP	TOWNSEND
	HOMAN			SECTION	2
				T	5 N R 17 E

TYPE MONUMENT PK/WASHER
 ON SURFACE - ~~BELOW~~ ON
 LEFT - Q PAV'T - ~~RIGHT~~ 2'
10' TO LT EDGE PAVEMENT
 S.L.M. 1655+80
 GRID: NORTHING: - EASTING: -



O.D.O.T. DISTRICT 2 SURVEY OFFICE

PERSONNEL

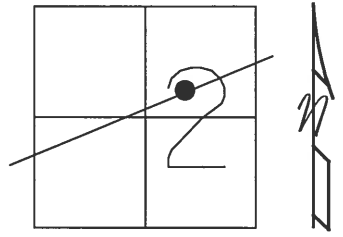
REFERENCE NO. 52-A SHEET 23 OF 27

NOTES ROUSOS
 H.C. VAN DUSEN
 R.C. MOSSER
HOMAN

DATE 3-16-02
 WEATHER WINDY
 TEMP. 28°

ROUTE ^{U.S.} ~~SR~~ 6
 COUNTY Sandusky
 TOWNSHIP Townsend
 SECTION 2
T 5 N R 17 E

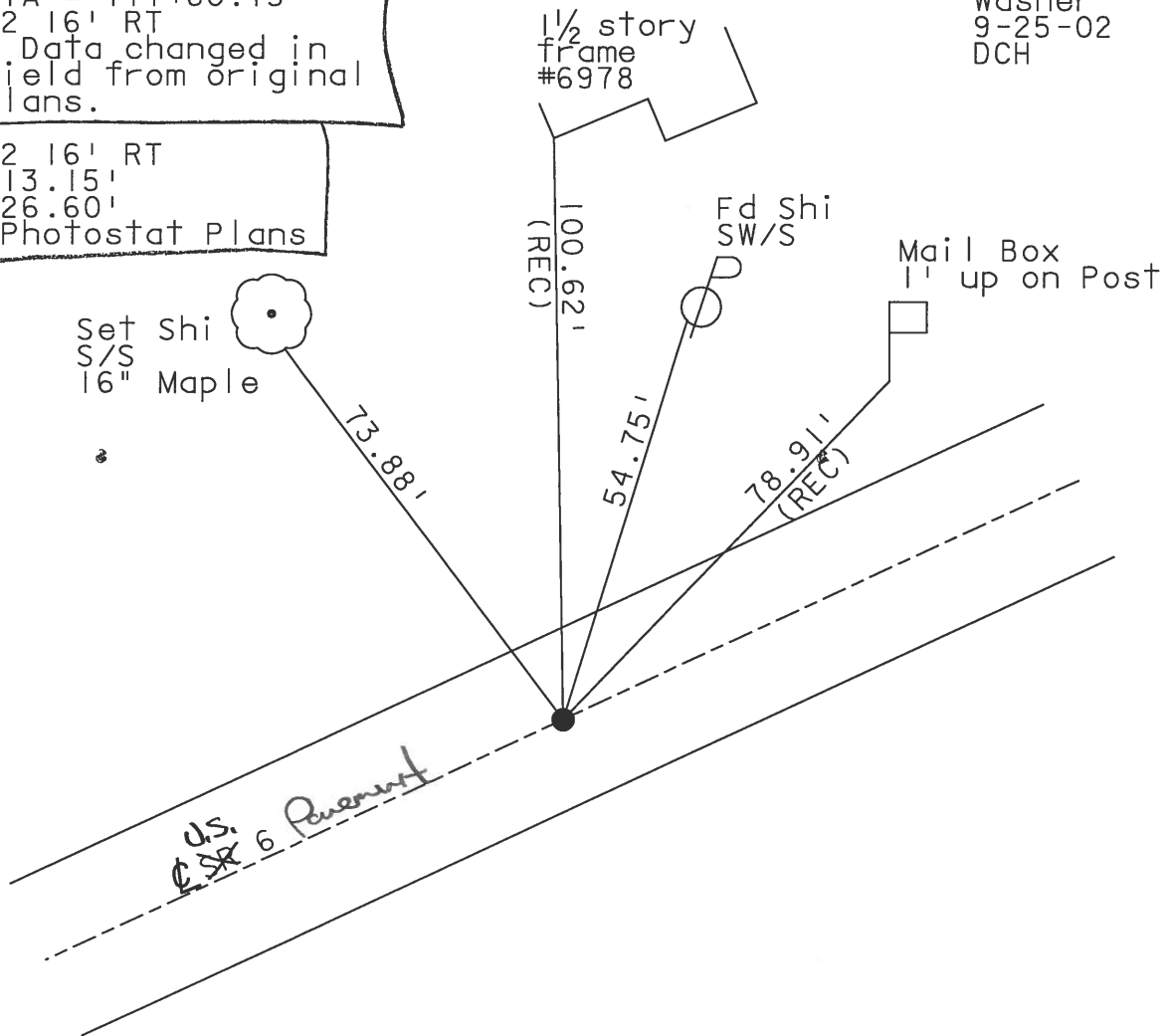
TYPE MONUMENT PK/Washer
 ON SURFACE - ~~BELOW~~ On Surface
 LEFT - Q PAV'T - ~~RIGHT~~ 2' LT
10' TO LT EDGE PAVEMENT
 S.L.M. 1655+80



P. I.
 Old STA = 111+60.15
 $\Delta = 02' 16''$ RT
 Note: Data changed in field from original plans.

Set Mag Nail & Washer
 9-25-02
 DCH

$\Delta = 02' 16''$ RT
 T = 113.15'
 L = 226.60'
 1931 Photostat Plans



O.D.O.T. DISTRICT 2 SURVEY OFFICE

PERSONNEL _____

REFERENCE NO. _____

SHEET 35 OF 39

NOTES RIPPLE

H.C. BARBOUR

DATE 10-3-1991

ROUTE 6

R.C. GEYMAN

WEATHER —

COUNTY SANDUSKY

TEMP. 74°

TOWNSHIP TOWNSEND

SECTION 2

T5N R17E

TYPE MONUMENT PK/WASHER

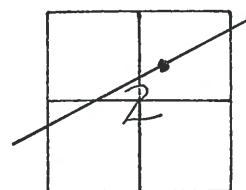
ON SURFACE - BELOW

LEFT - ☉ PAV'T. - RIGHT 2'

— TO — EDGE PAVEMENT

S.L.M. 1655+80

52A



P.I.

OLD STA. = 111+60.15

$\Delta = 02^{\circ}16'$ RT.

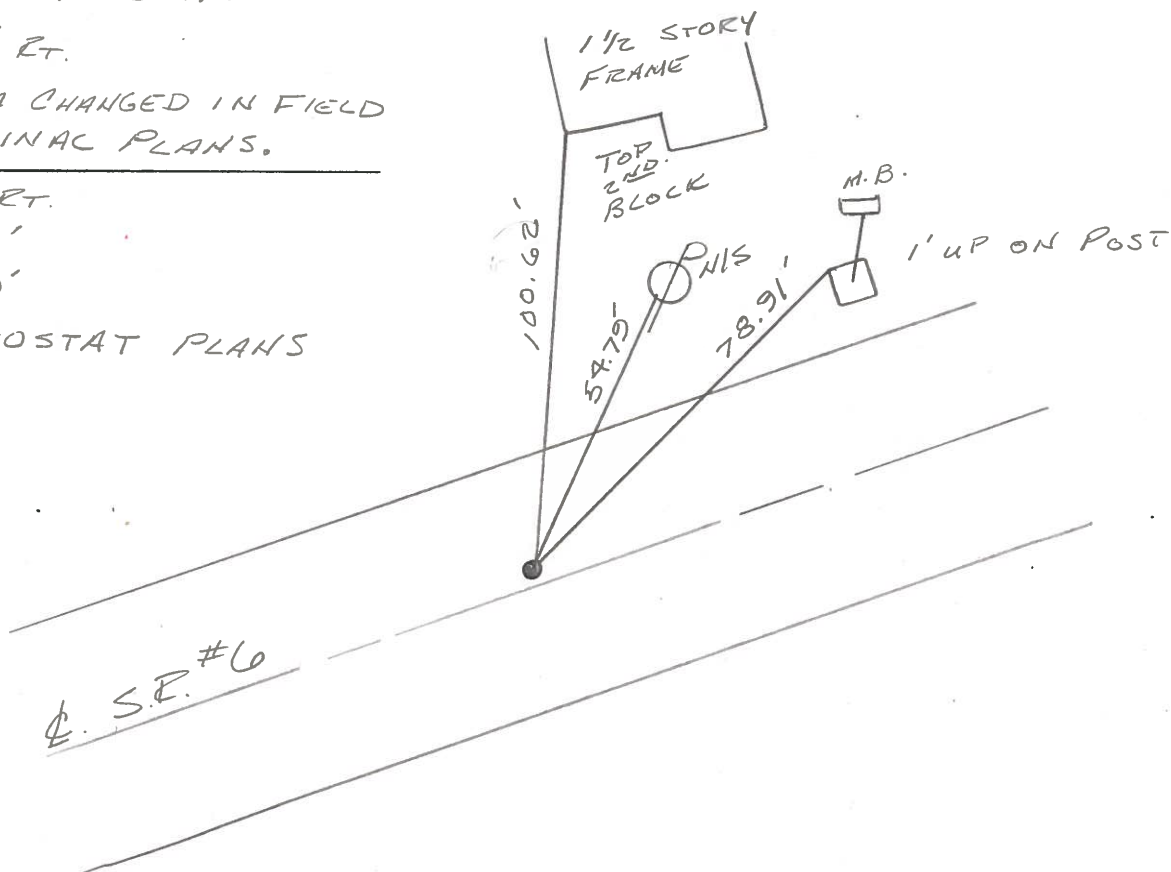
NOTE: DATA CHANGED IN FIELD FROM ORIGINAL PLANS.

$\Delta = 02^{\circ}16'$ RT.

T = 113.15'

L = 226.60'

1931 PHOTOSTAT PLANS



Q.D.O.T. DISTRICT 2 SURVEY OFFICE

SHEET _____ OF _____

County Sandusky S.R. U.S. #6

Date 9/26/87

Township Townsend

Weather sunny - windy

Section 2

Temp. 50°

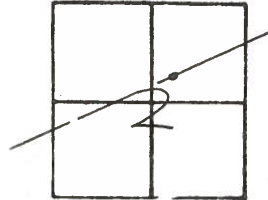
T5N, R12E

Personnel Cronin

Ripple

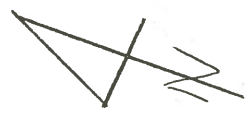
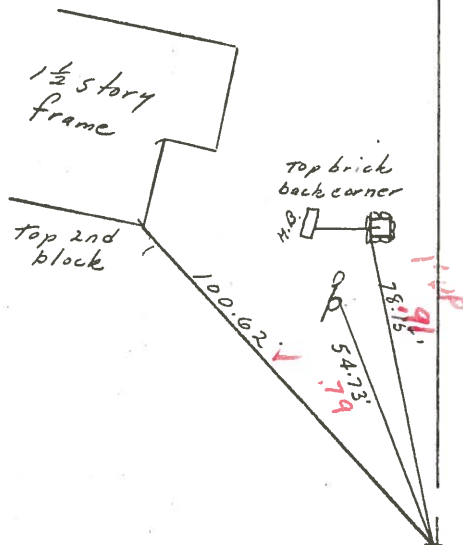
Geyman

Barbour



52A

4/03/91
57°



1655 + 80

P.I. A = 02°16' Rt.

111 + 60.15

set P.K. & washer at top boat

spike - Data changed in
field from original plans

A = 02°16' Rt.

T = 113.15'

L = 226.60'

1931 Photostat Plans

2' LT &

U.S. #6

10/03/91

RIPPLE

BARBOUR

GEYMAN

SET P.K. & WASHER

Temp 74°

Q.D.O.T. DISTRICT 2 SURVEY OFFICE

SHEET _____ OF _____

County Sandusky S. R. U.S. #46

Date 9/26/87

Township Townsend

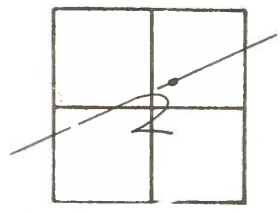
Weather sunny - windy

Section 2

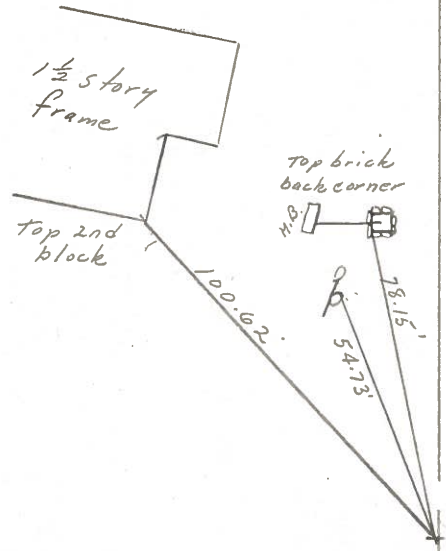
Temp. 50°

T⁵N, R¹²E

Personnel Cronin
Ripple
Geyman
Barbour



52A



P.I. $\Delta = 02^{\circ}16'$ Rt.

111 + 60.15

set P.K. & washer at top boat spike - Data changed in field from original plans

$\Delta = 02^{\circ}16'$ Rt.

T = 113.15'

L = 226.60'

1931 Photostat Plans

S. R. U.S. #46

PERSONNEL	TITLE	PERSONNEL	TITLE
Cronin		Schneider	
Ash		Mosser	
Ripple		Barbour	
Geyman			

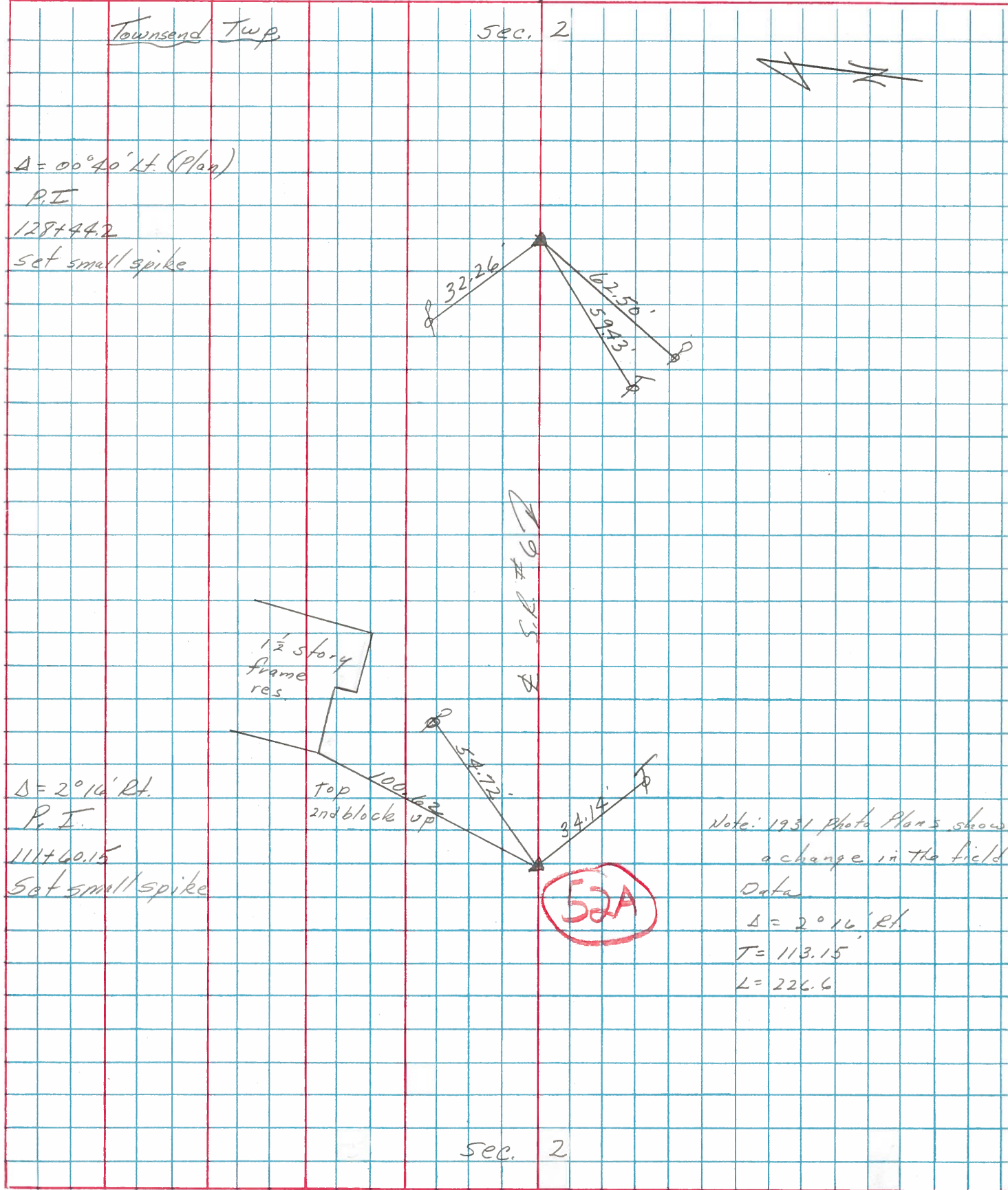
COUNTY Sandusky DATE drawn 8/4/75

S. R. #6 WEATHER sunny

SEC. "HJ" - Fremont - East TEMP. 78°

DESCRIPTION Ties for Control Points

LEFT CENTER LINE RIGHT JOB NO.



Δ = 00°40' Lt. (Plan)
P.I.
128+44.2
Set small spike

Δ = 2°16' Rt.
P.I.
111+60.15
Set small spike

Note: 1931 Photo Plans show a change in the field Data
Δ = 2°16' Rt.
T = 113.15'
L = 226.6'

52A