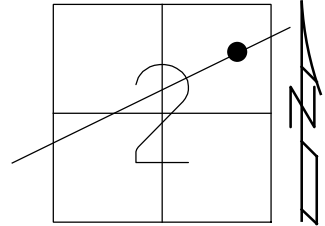


O.D.O.T. DISTRICT 2 SURVEY OFFICE (USE ONLY)

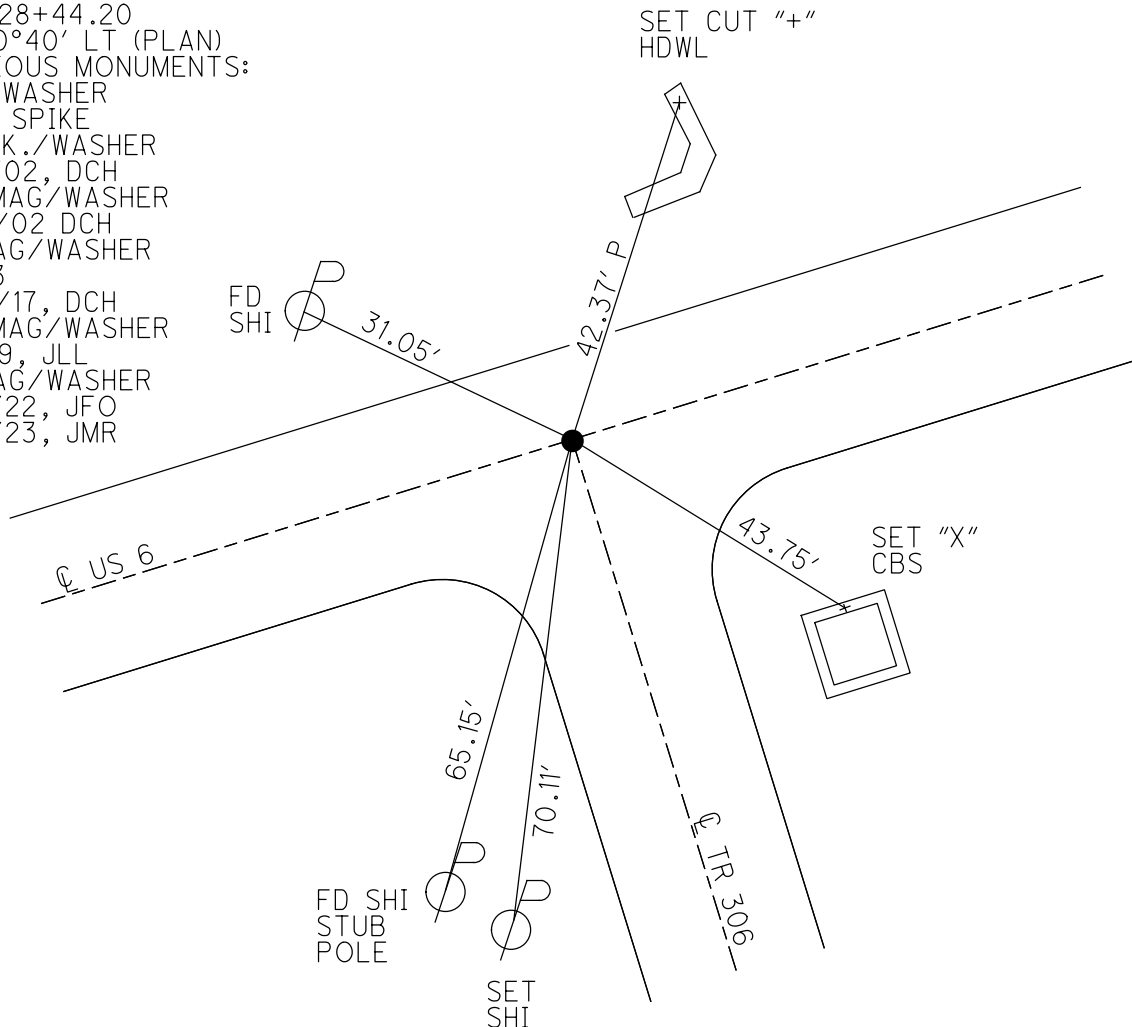
PERSONNEL _____ REFERENCE NO. 53 SHEET 31 OF 34
 NOTES LEU DATE 8/8/18 ROUTE US 6
 H.C. LEU WEATHER CLOUDY COUNTY SANDUSKY
 R.C. HAGEMAYER TEMP. 79° TOWNSHIP TOWNSEND
 DWG BY AUBLE PID PAVETRAIN SECTION 2
 T 5 N R 17 E

TYPE MONUMENT MAG/WASHER
 ON SURFACE - ~~BELOW~~ ON
 OFFSET Q PAVEMENT 0.4' RT : RT
12.6' TO LT EDGE PAVEMENT
 STATION: 1672+66



HORIZ.DATUM: NAD83 (2011) GEOID: 2012A
 GRID: NORTHING: 641281.303 EASTING: 1869018.816

RECORD: P.I.
 STA.128+44.20
 $\Delta = 00^{\circ}40'$ LT (PLAN)
 PREVIOUS MONUMENTS:
 P.K./WASHER
 BOAT SPIKE
 FD P.K./WASHER
 3/16/02, DCH
 SET MAG/WASHER
 9/25/02 DCH
 FD MAG/WASHER
 REF53
 11/23/17, DCH
 SET MAG/WASHER
 8-6-19, JLL
 FD MAG/WASHER
 2/10/22, JFO
 1/20/23, JMR



O.D.O.T. DISTRICT 2 SURVEY OFFICE (USE ONLY)

PERSONNEL

REFERENCE NO. 53

SHEET 31 OF 34

NOTES LEU

DATE 8/8/18

ROUTE US 6

H.C. LEU

WEATHER CLOUDY

COUNTY SANDUSKY

R.C. HAGEMeyer

TEMP. 79°

TOWNSHIP TOWNSEND

DWG BY AUBLE

PID 95769

SECTION 2

T 5 N R 17 E

TYPE MONUMENT MAG/WASHER

ON SURFACE - ~~BELOW~~ ON

OFFSET 0.4' LT : RT

12.6' TO LT EDGE PAVEMENT

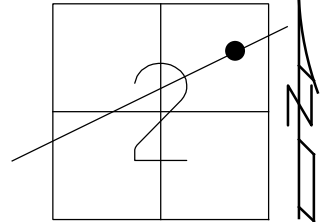
STATION: 1672+66

HORZ.DATUM: NAD83 (2011)

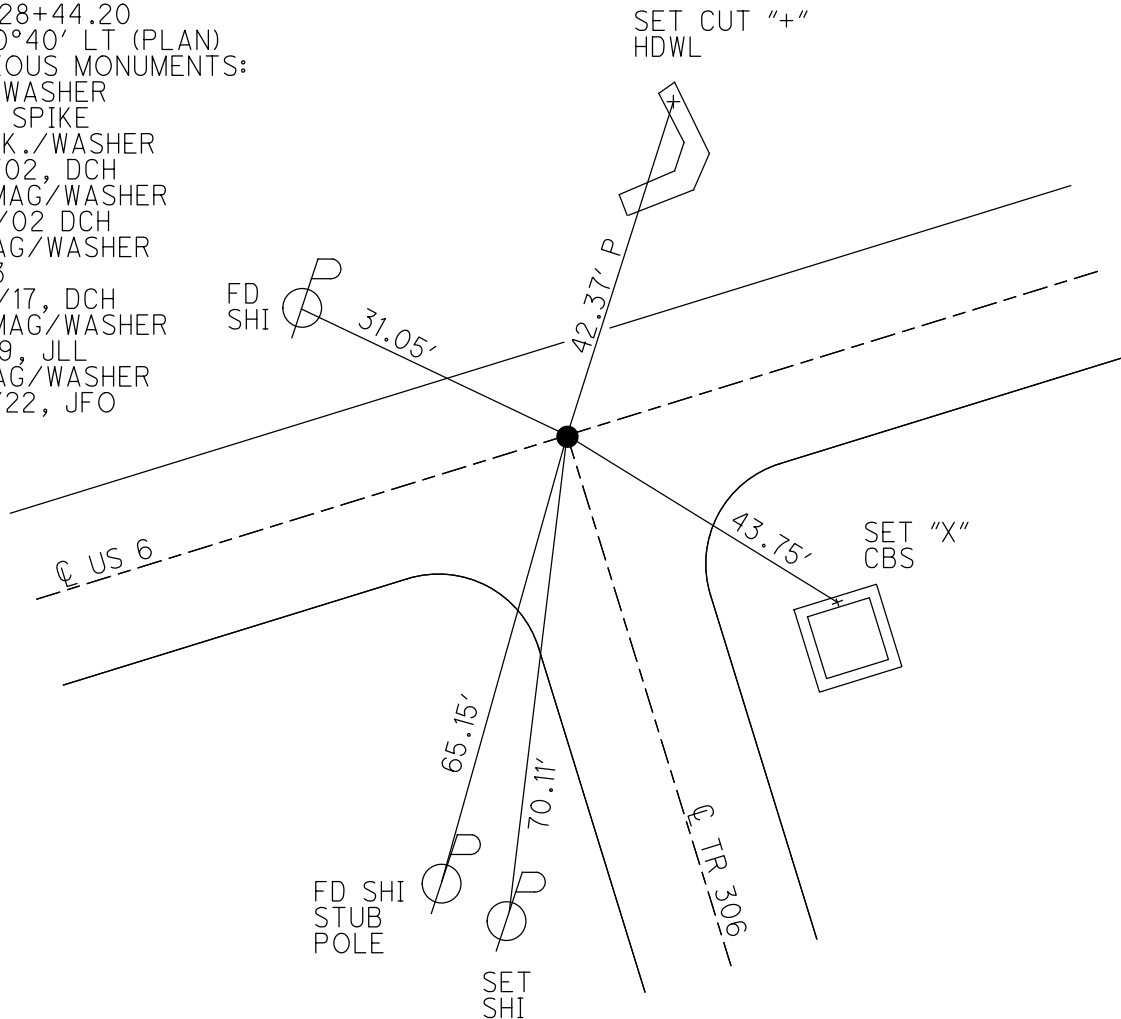
GEOID: 2012A

GRID: NORTHING: 641281.303

EASTING: 1869018.816



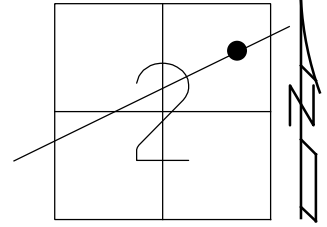
RECORD: P.I.
 STA. 128+44.20
 $\Delta = 00^{\circ}40'$ LT (PLAN)
 PREVIOUS MONUMENTS:
 P.K./WASHER
 BOAT SPIKE
 FD P.K./WASHER
 3/16/02, DCH
 SET MAG/WASHER
 9/25/02 DCH
 FD MAG/WASHER
 REF53
 11/23/17, DCH
 SET MAG/WASHER
 8-6-19, JLL
 FD MAG/WASHER
 2/10/22, JFO



O.D.O.T. DISTRICT 2 SURVEY OFFICE (USE ONLY)

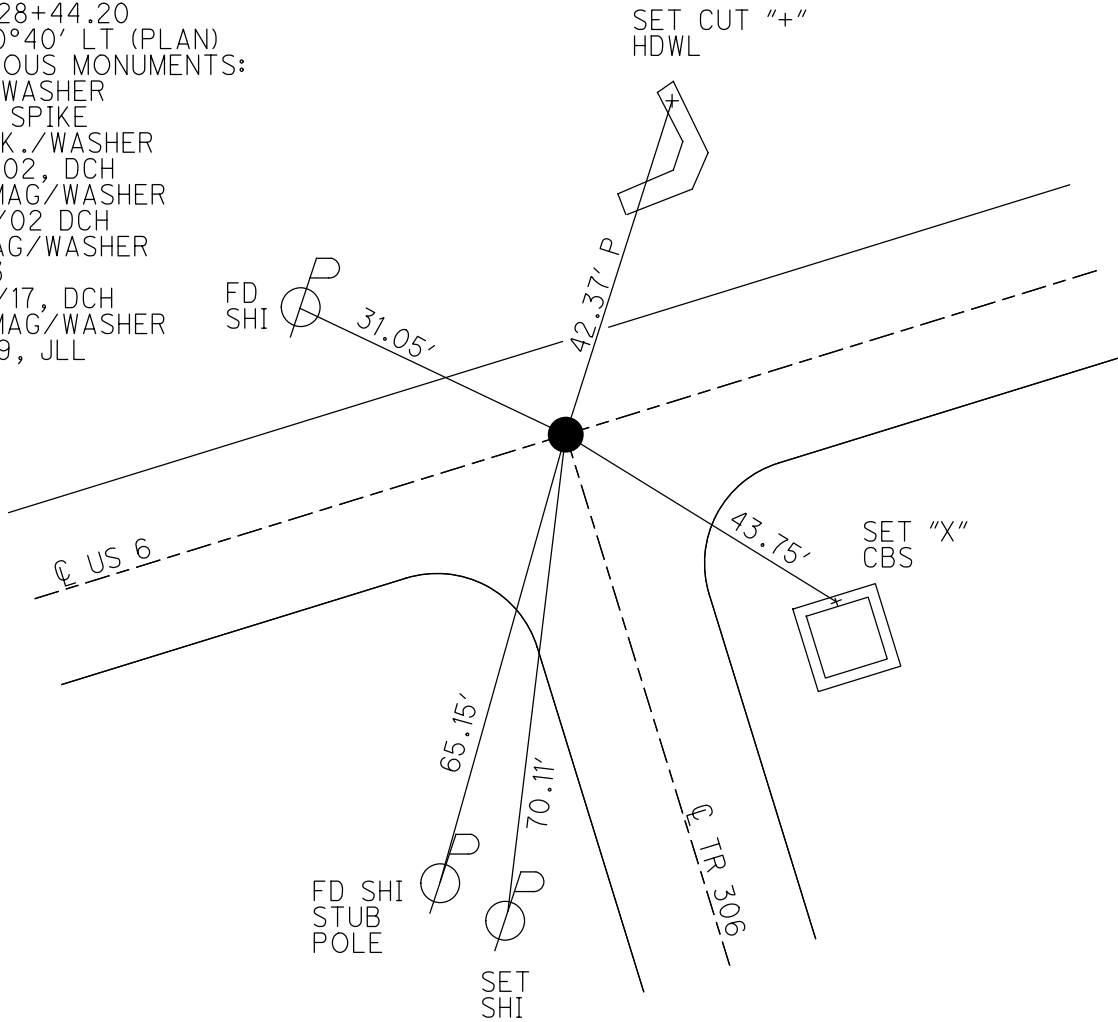
PERSONNEL _____ REFERENCE NO. 53 SHEET 31 OF 34
 NOTES LEU DATE 8/8/18 ROUTE US 6
 H.C. LEU WEATHER CLOUDY COUNTY SANDUSKY
 R.C. HAGEMeyer TEMP. 79° TOWNSHIP TOWNSEND
 DWG BY AUBLE PID 95769 SECTION 2
 T 5 N R 17 E

TYPE MONUMENT MAG/WASHER
 ON SURFACE - ~~BELOW~~ ON
 OFFSET Q PAVEMENT 0.4' LT : RT
12.6' TO LT EDGE PAVEMENT
 STATION: 1672+66



HORZ.DATUM: NAD83 (2011) GEOID: 2012A
 GRID: NORTHING: 641281.303 EASTING: 1869018.816

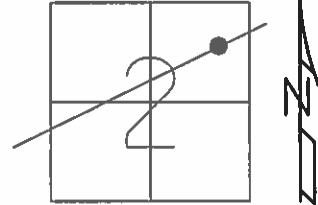
RECORD: P.I.
 STA. 128+44.20
 $\Delta = 00^{\circ}40'$ LT (PLAN)
 PREVIOUS MONUMENTS:
 P.K./WASHER
 BOAT SPIKE
 FD P.K./WASHER
 3/16/02, DCH
 SET MAG/WASHER
 9/25/02 DCH
 FD MAG/WASHER
 REF53
 11/23/17, DCH
 SET MAG/WASHER
 8-6-19, JLL



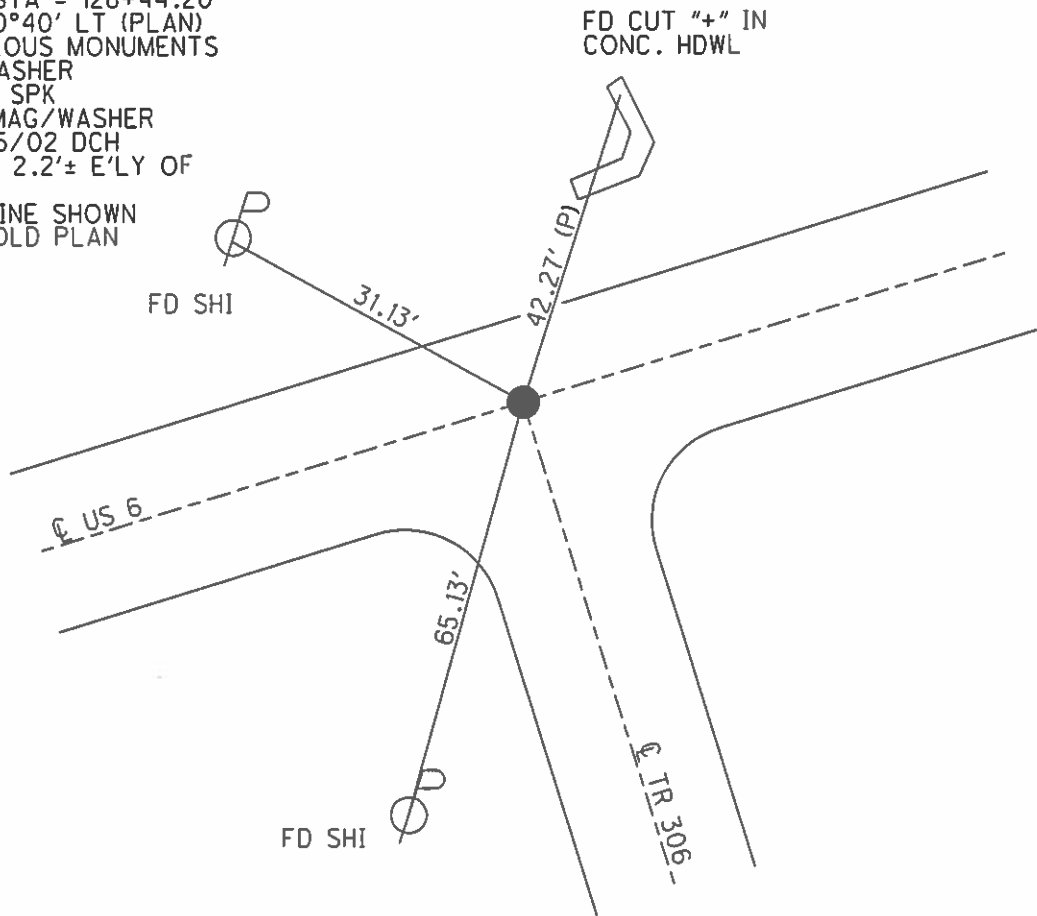
O.D.O.T. DISTRICT 2 SURVEY OFFICE (USE ONLY)

PERSONNEL _____ REFERENCE NO. 53 SHEET 28 OF 31
 NOTES ROUSOS DATE 03/16/02 ROUTE US 6
 H.C. VAN DUSEN WEATHER WINDY COUNTY SANDUSKY
 R.C. MOSSER TEMP. 28° TOWNSHIP TOWNSEND
 _____ SECTION 2
 _____ T 5 N R 17 E

TYPE MONUMENT _____ PK/WASHER _____
 ON SURFACE - ~~BELOW~~ _____ ON _____
~~LEFT~~ - Q PAV'T - ~~RIGHT~~ _____ ON _____
12.6' TO LT EDGE PAVEMENT
 S.L.M. _____ 1672+66
 GRID: NORTHING: _____ EASTING: _____



RECORD: PI
 OLD STA = 128+44.20
 $\Delta = 00^{\circ}40'$ LT (PLAN)
 PREVIOUS MONUMENTS
 PK/WASHER
 BOAT SPK
 SET MAG/WASHER
 09/25/02 DCH
 PT IS 2.2'± E'LY OF
 1/4
 1/4 LINE SHOWN
 ON OLD PLAN



O.D.O.T. DISTRICT 2 SURVEY OFFICE

PERSONNEL

REFERENCE NO. 53

SHEET 24 OF 27

NOTES ROUSOS

DATE 3-16-02

ROUTE ^{U.S.} SR 6

H.C. VAN DUSEN

WEATHER WINDY

COUNTY Sandusky

R.C. MOSSER

TEMP. 28°

TOWNSHIP Townsend

HOMAN

SECTION 2

T 5 N R 17 E

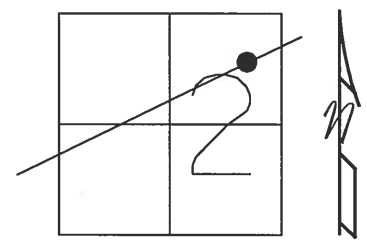
TYPE MONUMENT PK/Washer

ON SURFACE - BELOW On Surface

LEFT - Q PAV'T - RIGHT

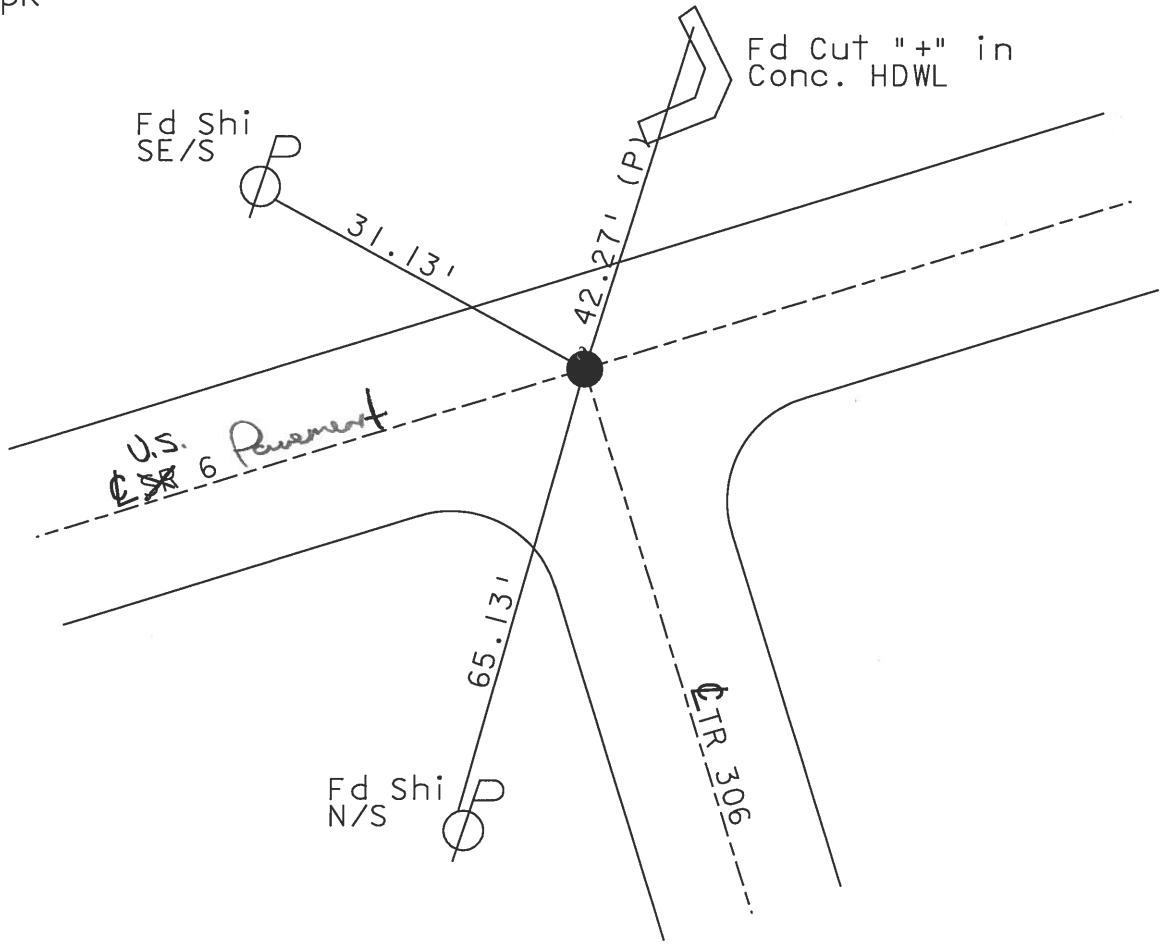
12.6' TO LT EDGE PAVEMENT

S.L.M. 1672+66 / 1672+18



P.I.
Old STA = 128+44.20
Δ = 00 40' LT (PLAN)
Previous Monuments
PK/Washer
Boat Spk

Set Mag Nail &
Washer
9-25-02
DCH



PT. is 2.2' +/- E'ly of
1/4 1/4 Line Shown On Old Plan

O.D.O.T. DISTRICT 2 SURVEY OFFICE

PERSONNEL _____

REFERENCE NO. _____

SHEET 36 OF 39

NOTES RIPPLE

H.C. BARBOUR

DATE 10-3-1991

ROUTE 6

R.C. GEYMAN

WEATHER —

COUNTY SANDUSKY

TEMP. 74°

TOWNSHIP TOWNSEND

SECTION 2

T 5 N R 17 E

TYPE MONUMENT PK/WASHER

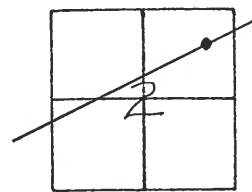
ON SURFACE - BELOW

LEFT - ☉ PAV'T. - RIGHT —

— TO — EDGE PAVEMENT

S.L.M. 1672+66

53



P.I.

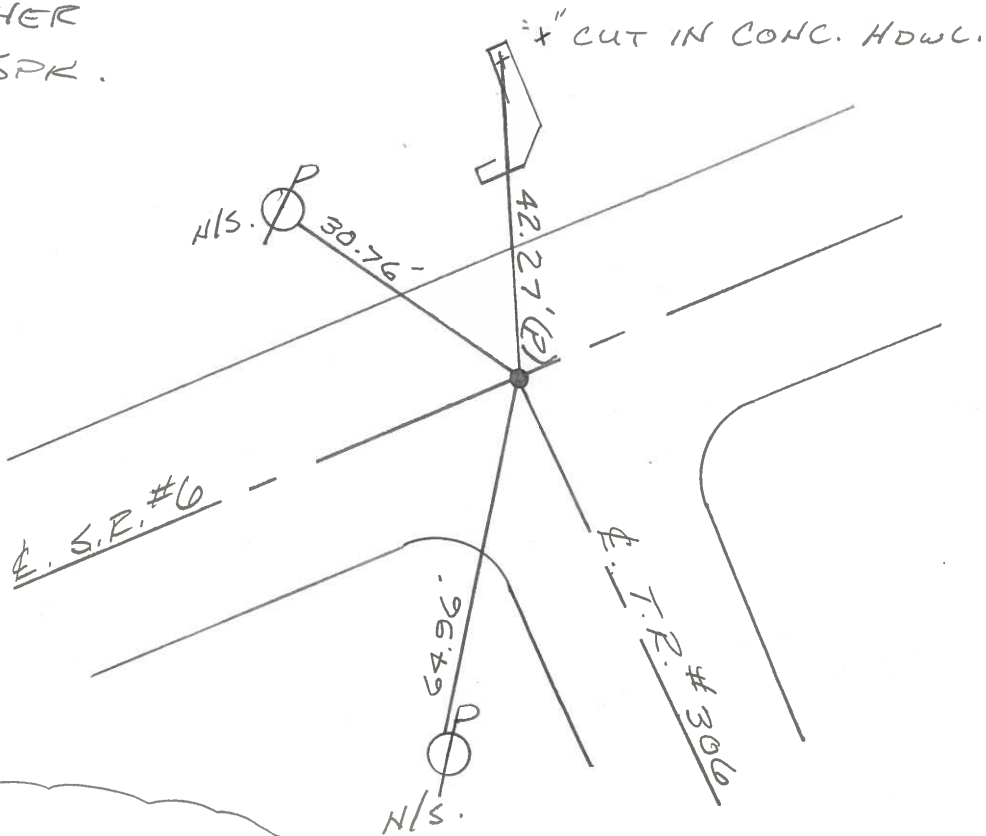
OLD STA. = 128+44.20

$\Delta = 00^\circ 40' \text{ LT. (PLAN)}$

PREVIOUS MONUMENTS

PK/WASHER

BOAT SPK.



Pt. is 2.2' E. 2.4' S. OF
1/4 1/4 LINE SHOWN
ON OLD PLAN.

Q.D.O.T. DISTRICT 2 SURVEY OFFICE

SHEET _____ OF _____

County Sandusky S.R. U.S.#6

Date 9/26/84

Township Townsend

Weather sunny - windy

Section 2

Temp. 52°

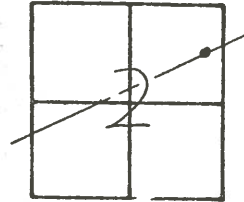
TEN, RIZE

Personnel Cronin

Ripple

Geyman

Barbour



53

4/03/91
57°

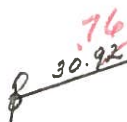
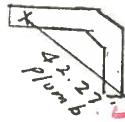
72+66

P.I. Δ = 00°40' Lt. (Plan)

128+4420

Set P.K. & washer atop
boat spike

'cut in conc. hdwl'



Point is 2.2 Ely of $\frac{1}{4}$ $\frac{1}{4}$ Lin
shown on old Plan



T.R. #306

10/03/91

RIPPLE

BARBOUR

GEYMAN

SET P.K. & WASHER

Temp 74°

O.D.O.T. DISTRICT 2 SURVEY OFFICE

SHEET _____ OF _____

County Sandusky S.R. U.S. #6

Date 9/26/87

Township Townsend

Weather sunny - windy

Section 2

Temp. 52°

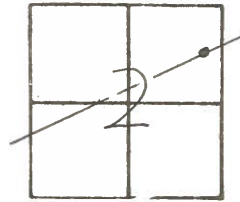
T5N, R1E

Personnel Cronin

Ripple

Geyman

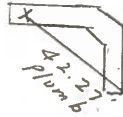
Barbour



53

U.S. #6

'cut in conc. hdwl



P.T. $\Delta = 00^{\circ}40'$ Lt. (Plan)

128+4420

Set P.K. & washer atop boat spike

30.92

62.99

T.R. #306

PERSONNEL	TITLE	PERSONNEL	TITLE
Cronin		Schneider	
Ash		Mosser	
Ripple		Barbour	
Geyman			

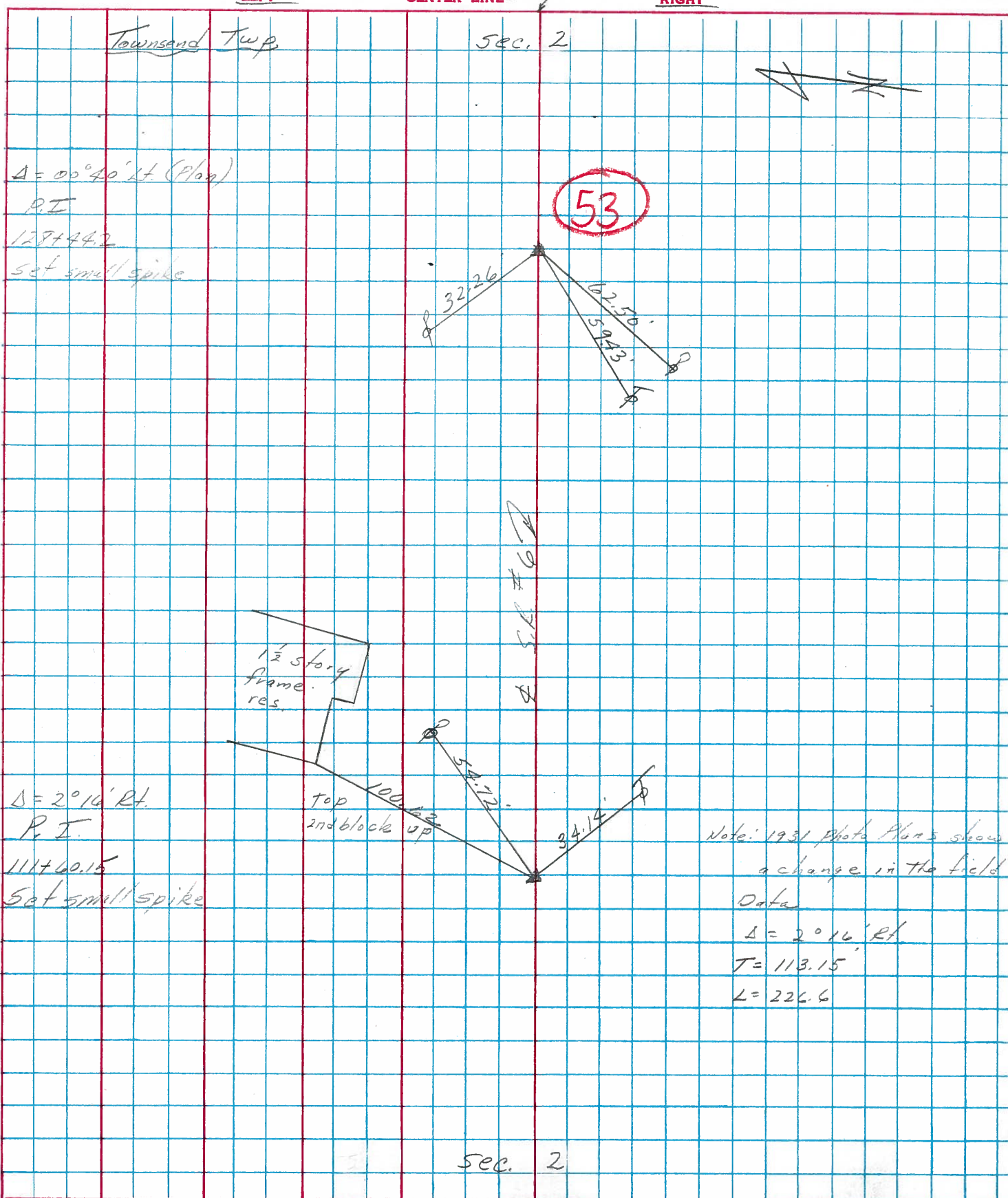
COUNTY Sandusky DATE drawn 8/4/75

S. R. #6 WEATHER sunny

SEC. "HJ" - Fremont - East TEMP. 78°

DESCRIPTION Ties for Control Points

JOB NO.



$\Delta = 00^{\circ}40' \text{ Lt. (Plan)}$
 P.I.
 128+44.2
 set small spike

$\Delta = 2^{\circ}16' \text{ Rt.}$
 P.I.
 111+60.15
 set small spike

Note: 1931 Photo Plan 5 shows
 a change in the field
 Data
 $\Delta = 2^{\circ}16' \text{ Rt.}$
 $T = 113.15$
 $L = 226.6$

sec. 2